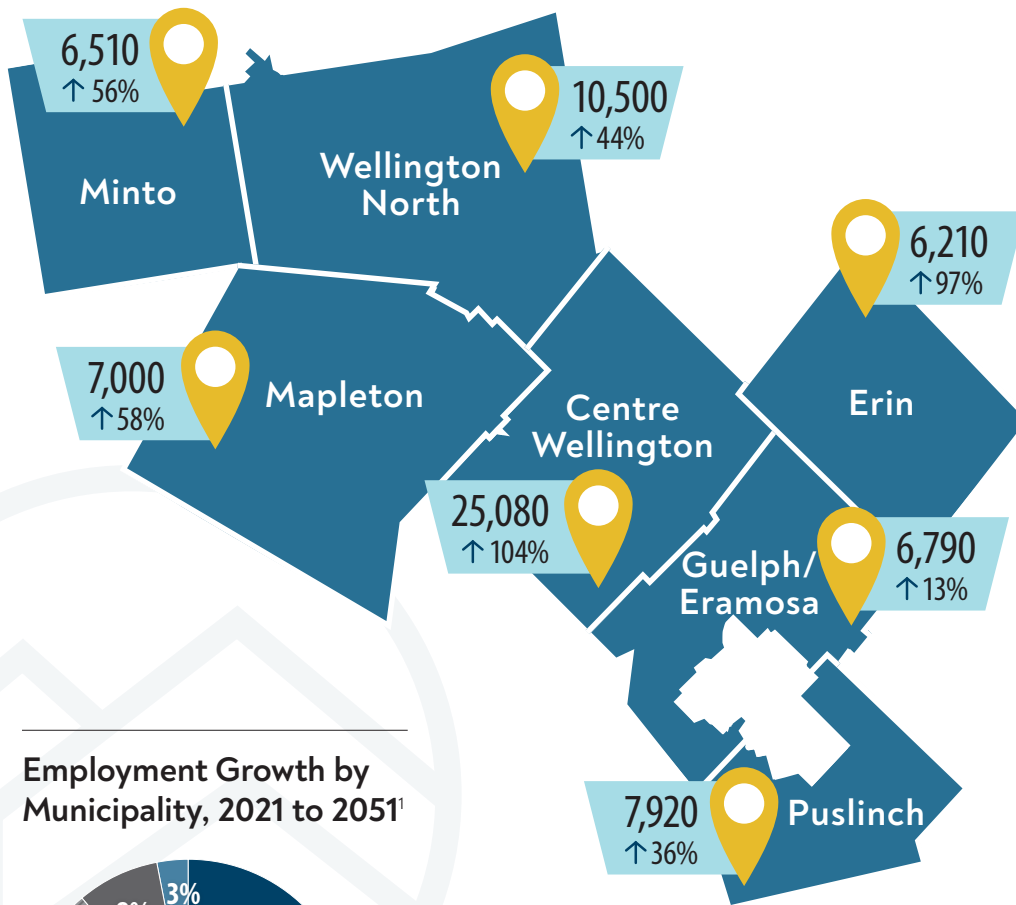


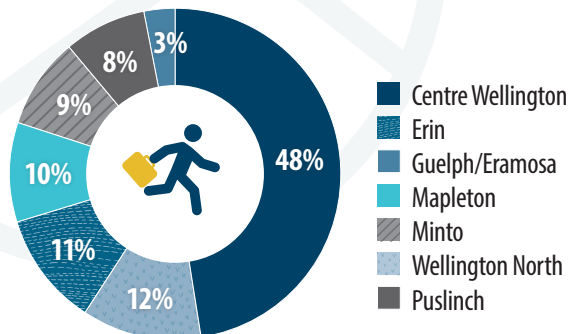
Employment

The County of Wellington is part of the Provincial Growth Plan for the Greater Golden Horseshoe. Through this plan the Province has forecasted employment growth to the County of Wellington until 2051. The County is responsible for further allocating this employment growth to its Member Municipalities through the Municipal Comprehensive Review (MCR).

2051 Employment and % Employment increase from 2021¹



Employment Growth by Municipality, 2021 to 2051¹



DRAFT



Employment Highlights County of Wellington


2021 Employment¹

43,000 

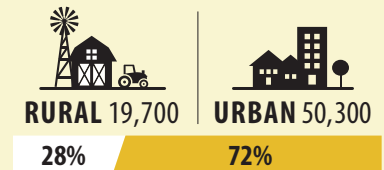
Employment by 2051^{1,2}

70,000 

Employment increase

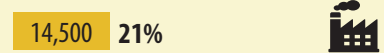
↑ 27,000 

Employment by Area by 2051¹



Employment by Type by 2051¹

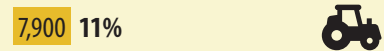
Urban Employment Lands Employment:



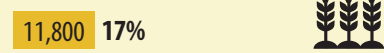
Urban Population-Related Employment:



Rural Employment lands Employment:



Other Rural Areas:



REFERENCES AND NOTES:

¹Watson & Associates Economist Ltd. – June 3, 2021. ²Schedule 3, Growth Plan for the Greater Golden Horseshoe (August 2020) pg.99

The employment numbers contained in this infographic are draft and are subject to change. The County will be finalizing the forecasts through an official plan amendment(s) to the County Official Plan.

TMOfficial Mark of
The Corporation of the
County of Wellington



Alternate formats available upon request.

