



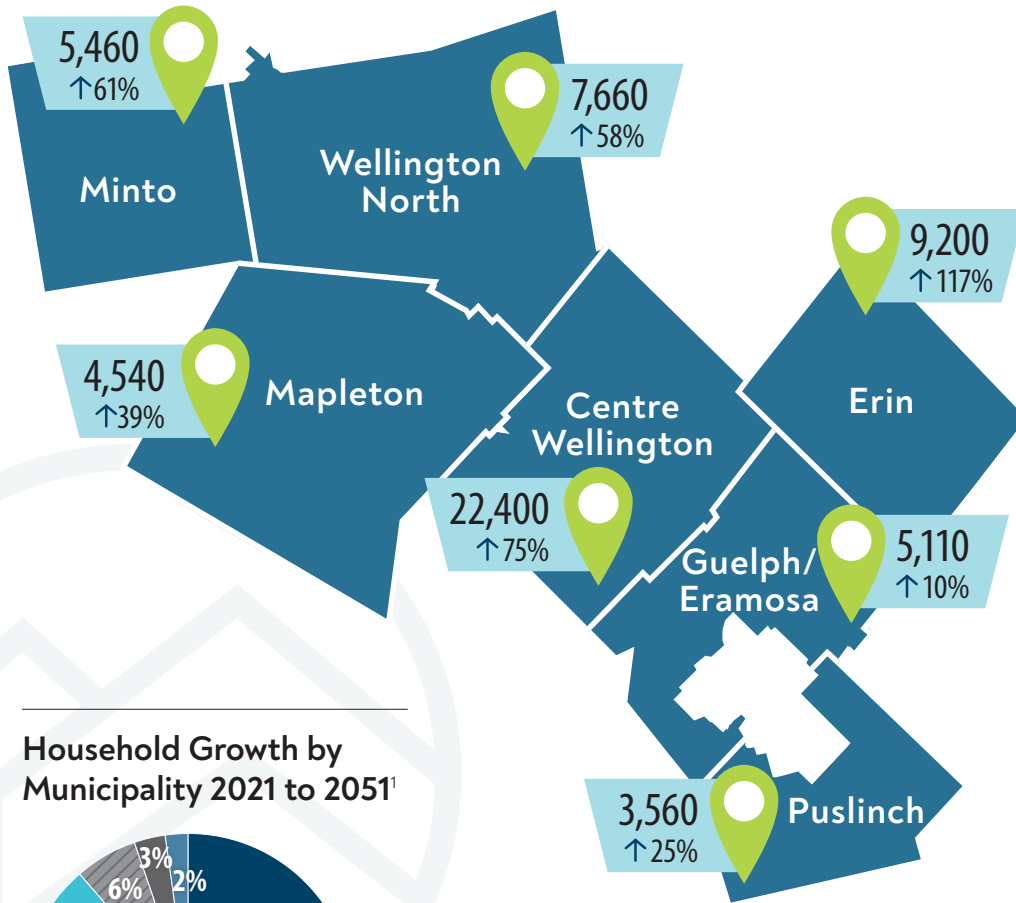
PLANWELL™

GROWTH MANAGEMENT

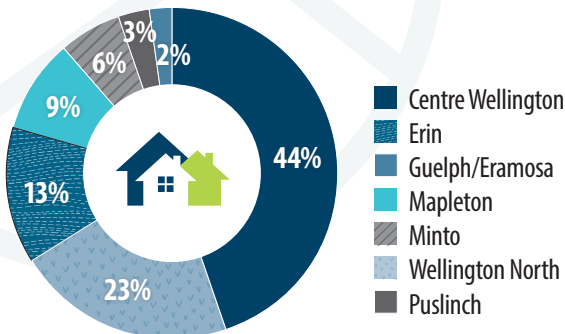
Households

The County of Wellington is part of the Provincial Growth Plan for the Greater Golden Horseshoe. Through this plan the Province has forecasted population growth to the County of Wellington until 2051. The total number of new households required in the County is partly determined by population growth, but density targets, people per unit and desired housing mix for our communities are factors as well.

2051 Total Housing Units and % Housing Unit increase from 2021¹



Household Growth by Municipality 2021 to 2051¹



DRAFT



County of Wellington Housing Highlights

2021 Housing Units¹

36,060

Housing Units by 2051¹

57,930

Housing Unit increase

↑21,870

Housing Units by Area by 2051¹



RURAL 18,090

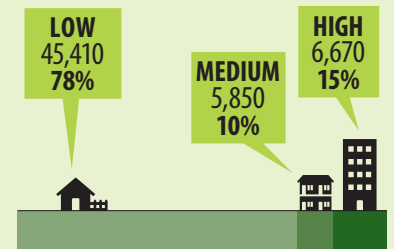


URBAN 39,840

31%

69%

Housing Units by Density Type¹



REFERENCES AND NOTES:

¹Watson & Associates Economist Ltd. – June 3, 2021.

The household numbers contained in this infographic are draft and are subject to change. The County will be finalizing the forecasts through an official plan amendment(s) to the County Official Plan.

^{OM}Official Mark of The Corporation of the County of Wellington



Alternate formats available upon request.



Visit www.wellington.ca/planwell for more.