



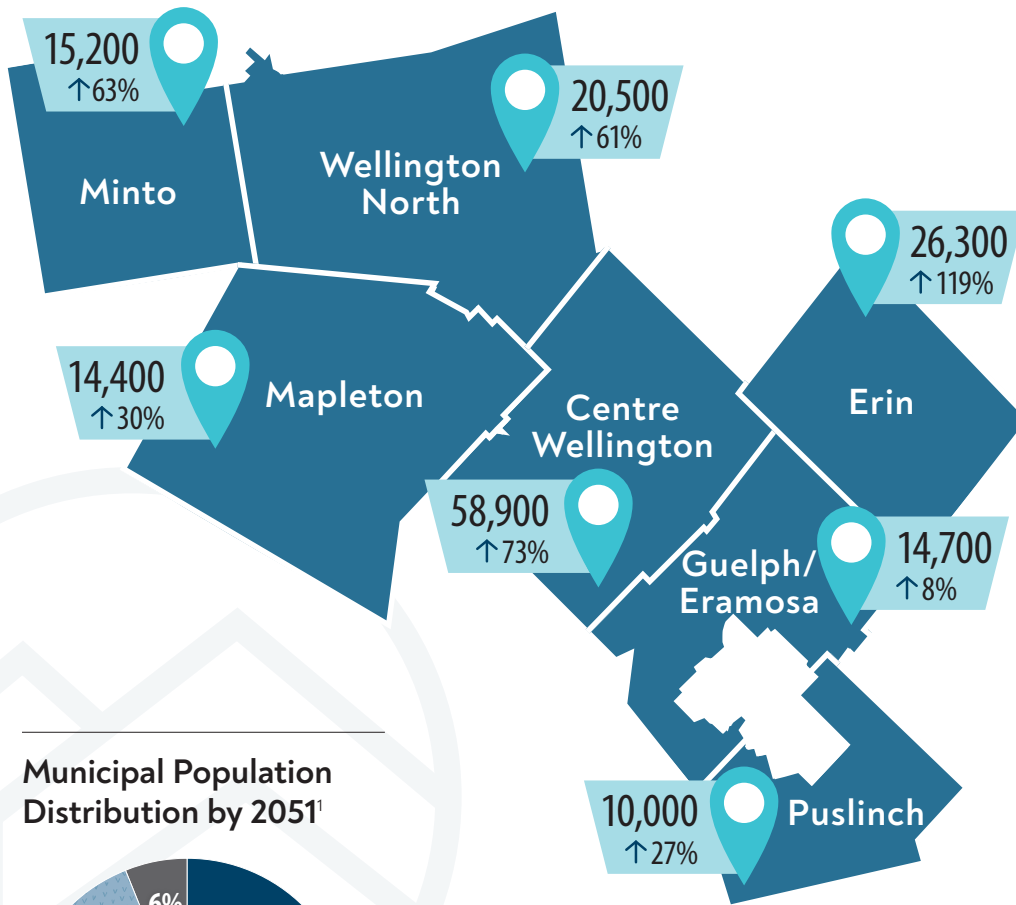
PLANWELL™

## GROWTH MANAGEMENT

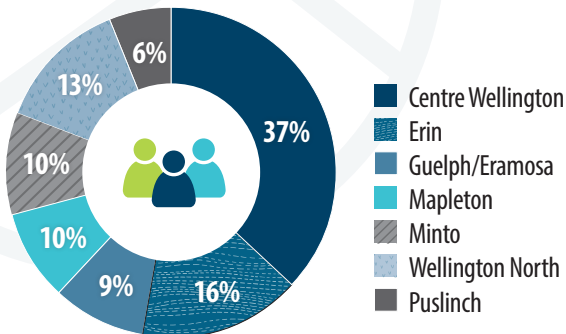
# Population

The County of Wellington is part of the Provincial Growth Plan for the Greater Golden Horseshoe. Through this plan the Province has forecasted population growth to the County of Wellington until 2051. The County is responsible for allocating this growth to our Member Municipalities through the Municipal Comprehensive Review (MCR).

### 2051 Population and % Population increase from 2021<sup>1</sup>



### Municipal Population Distribution by 2051<sup>1</sup>



DRAFT



## Population Highlights County of Wellington

### 2021 Population<sup>1</sup>

100,800

### Population by 2051<sup>1,2</sup>

160,000

### Population increase

↑ 59,200

### Population by Area by 2051<sup>1</sup>



**RURAL**  
54,200

34%



**URBAN**  
105,800

66%

### REFERENCES AND NOTES:

<sup>1</sup>Watson & Associates Economist Ltd. – June 3rd, 2021. <sup>2</sup>Schedule 3, Growth Plan for the Greater Golden Horseshoe (August 2020) pg.99

The population numbers contained in this infographic are draft and are subject to change. The County will be finalizing the forecasts through an official plan amendment(s) to the County Official Plan.

<sup>TM</sup>Official Mark of  
The Corporation of the  
County of Wellington



Alternate formats available upon request.



Visit [www.wellington.ca/planwell](http://www.wellington.ca/planwell) for more.