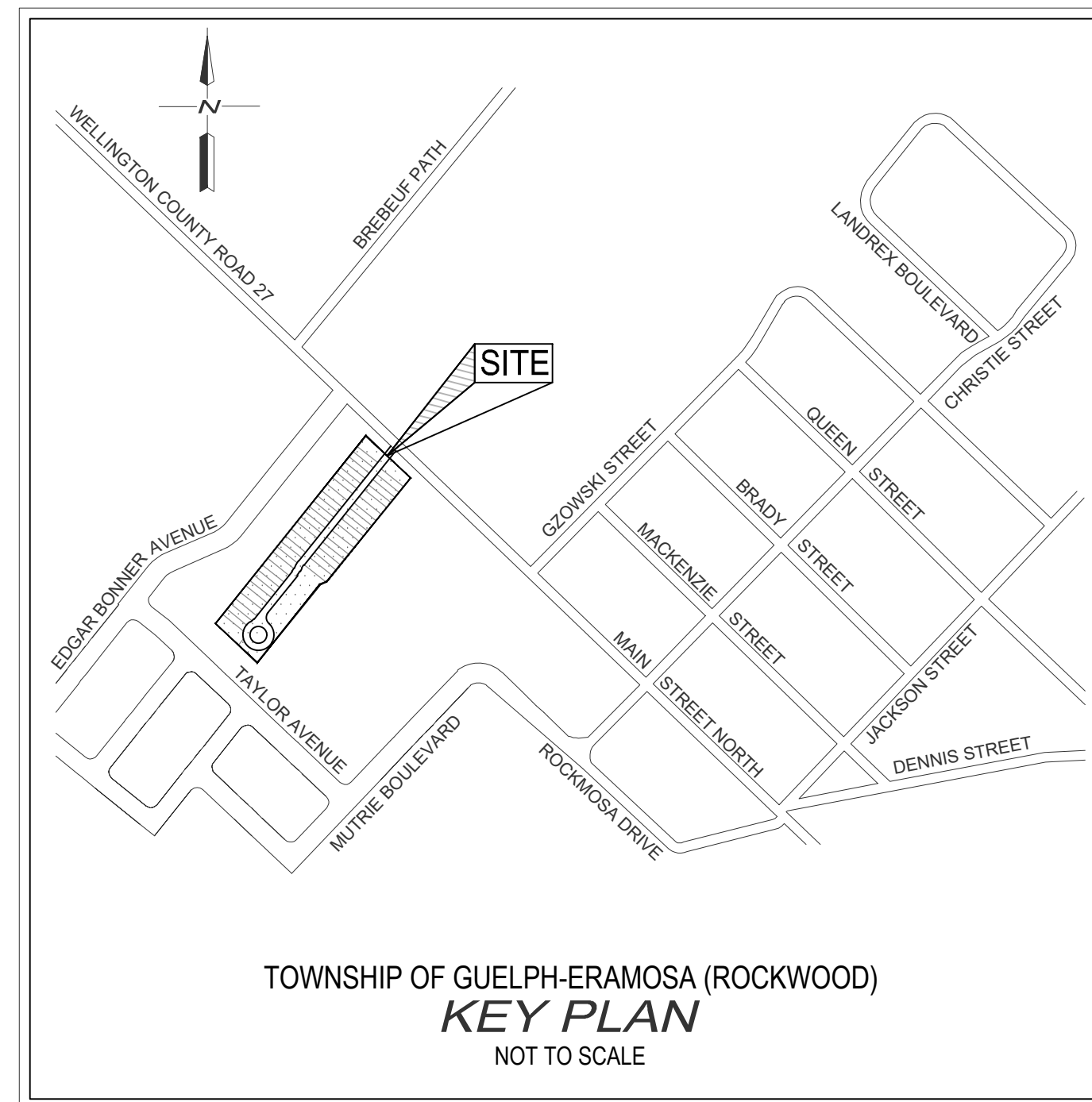


5150 WELLINGTON ROAD 27, ROCKWOOD

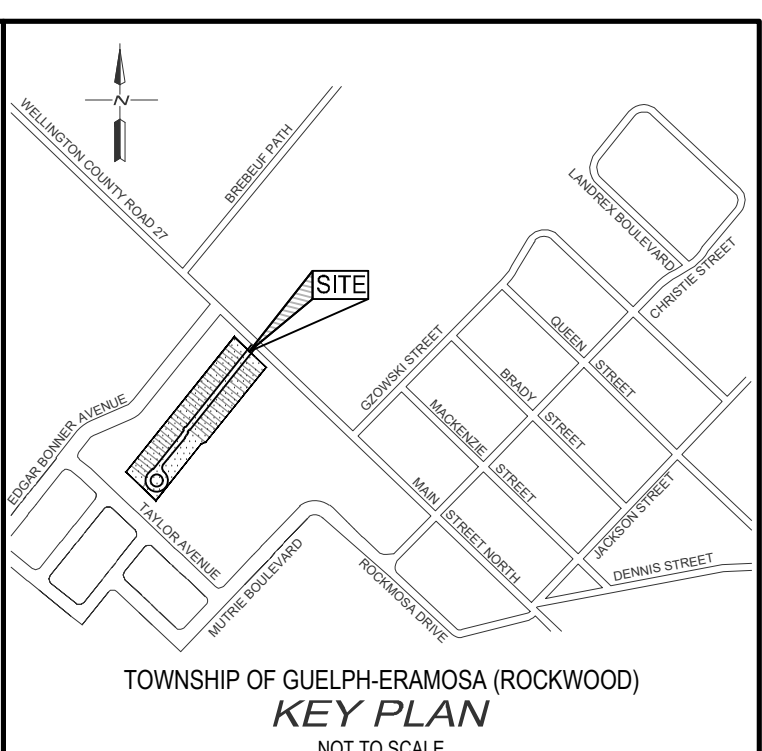
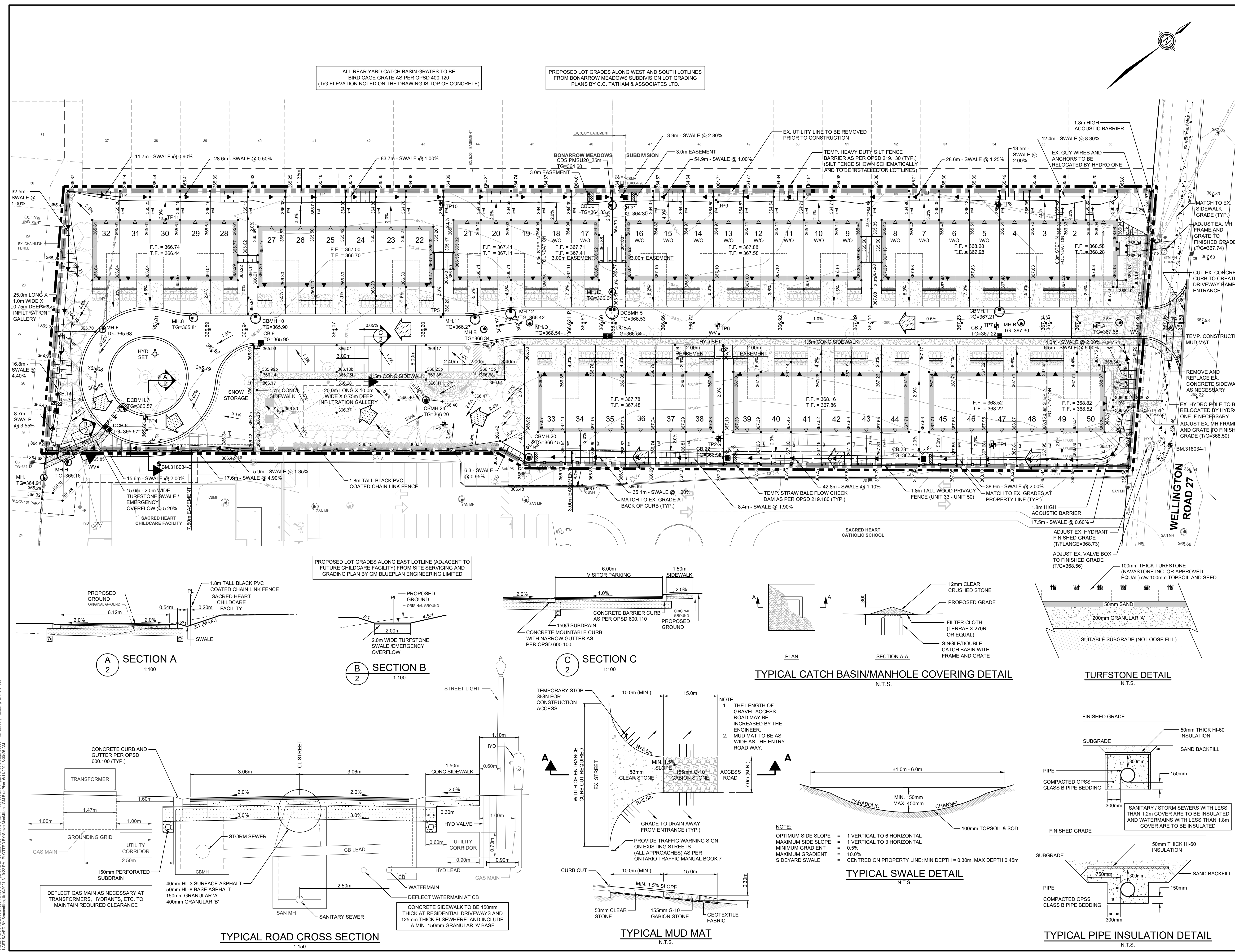
TOWNSHIP OF GUELPH-ERAMOSA CONTRACT 318034

NORTH ROCKWOOD DEVELOPMENTS INC.
5-167 JOLLIFEE AVENUE
P.O. BOX 760
ROCKWOOD, ON
N0B 2K0



INDEX

Dwg. No.	Description
1	GENERAL PLAN OF SERVICES
2	GRADING AND EROSION CONTROL PLAN
3	NEW STREET - STA. 0+700 TO STA. 1+020
4	STORM SEWER OUTLET - STA. 0+960 TO STA. 1+080 SANITARY SEWER OUTLET - STA. 0+960 TO STA. 1+060
5	UNIT 33-50 REAR YARD STORM - STA. 1+000 TO STA. 1+210 INFILTRATION GALLERY - STA. 1+000 TO STA. 1+060



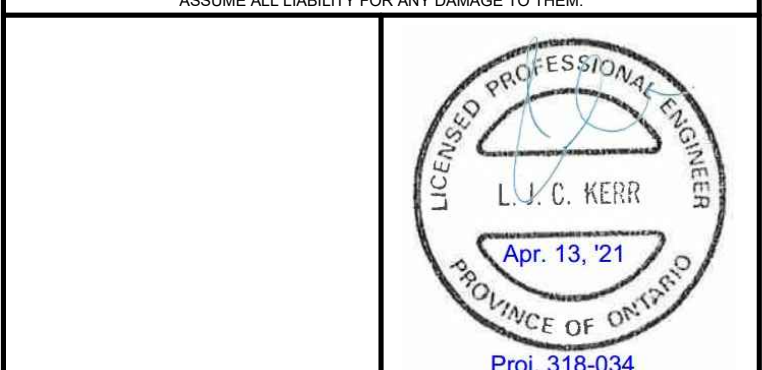
- NOTES:
- TOPOGRAPHIC AND EXISTING FEATURES SURVEY COMPLETED BY VAN HARTEN SURVEYING INC. DATED JULY 2018 AND JANUARY 2021.
 - LEGAL SURVEY INFORMATION PROVIDED BY VAN HARTEN SURVEYING INC. DATED JULY 2018.
 - SITE PLAN PREPARED BY ASTRID J. CLOS, DATED APRIL 12, 2021.
 - LANDSCAPE PLAN PREPARED BY HILL DESIGN STUDIO, DATED APRIL 28, 2021.
- LEGEND:
- BENCHMARK
 - SITE BOUNDARY
 - TEST PIT BY CHUNG & VANDER COELEN ENGINEERING LIMITED, DATED NOVEMBER 15, 2018
 - PR. SANITARY MH
 - PR. STORM MH / CBMH / CB
 - PR. HYD SET / WV
 - PR. GRADE
 - PR. / EX. SLOPE
 - EX. TOPOGRAPHICAL CONTOUR (M.A.S.L.)
 - PR. EMERGENCY MAJOR OVERLAND FLOW ROUTE

BENCH MARKS:

BM 318034-1 ELEV. 368.530
CUT CROSS ON THE CONCRETE CURB LOCATED ON THE WEST SIDE OF THE ENTRANCE TO SACRED HEART CATHOLIC SCHOOL, SOUTH OF WELLSVILLE ROAD 27

BM 318034-2 ELEV. 366.350
CUT CROSS ON THE CONCRETE CURB LOCATED IN THE SOUTHWEST CORNER OF THE SACRED HEART CHILD CARE FACILITY SITE.

THE POSITION OF POLE LINES, CONDUITS, WATERMANS, SEWERS AND OTHER UNDERGROUND AND OVERGROUND UTILITIES AND STRUCTURES IS NOT NECESSARILY SHOWN ON THE CONTRACT DRAWINGS AND, WHERE SHOWN, THE ACCURACY OF THE POSITION OF SUCH UTILITIES AND STRUCTURES IS NOT GUARANTEED. BEFORE STARTING WORK, THE CONTRACTOR SHALL INFORM HIMSELF OF THE EXACT LOCATION OF ALL SUCH UTILITIES AND STRUCTURES, AND SHALL ASSUME ALL LIABILITY FOR ANY DAMAGE TO THEM.



NO.	DATE	REVISION DESCRIPTION	CHKD
1	04/13/21	GENERAL REVISIONS - FIRST SUBMISSION FOR APPROVAL	J.K.
0	03/25/21	FIRST SUBMISSION FOR APPROVAL	J.K.

BluePlan ENGINEERING

GUELPH | OWEN SOUND | LISTOWEL | WITCHERIE | LONDON | HAMILTON | GTA
975 WALLACE AVENUE NORTH, LISTOWEL, ON N4W 1M8
TEL 519-291-9339 www.blueplan.ca

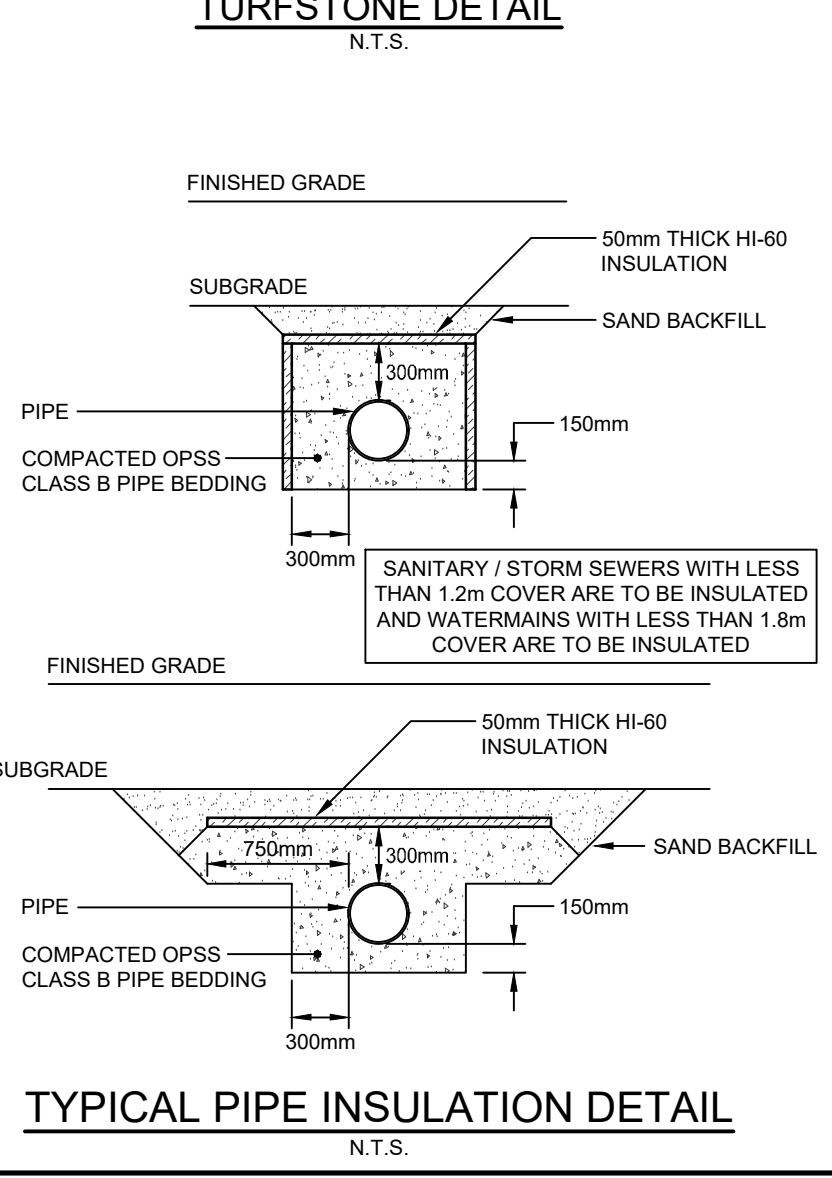
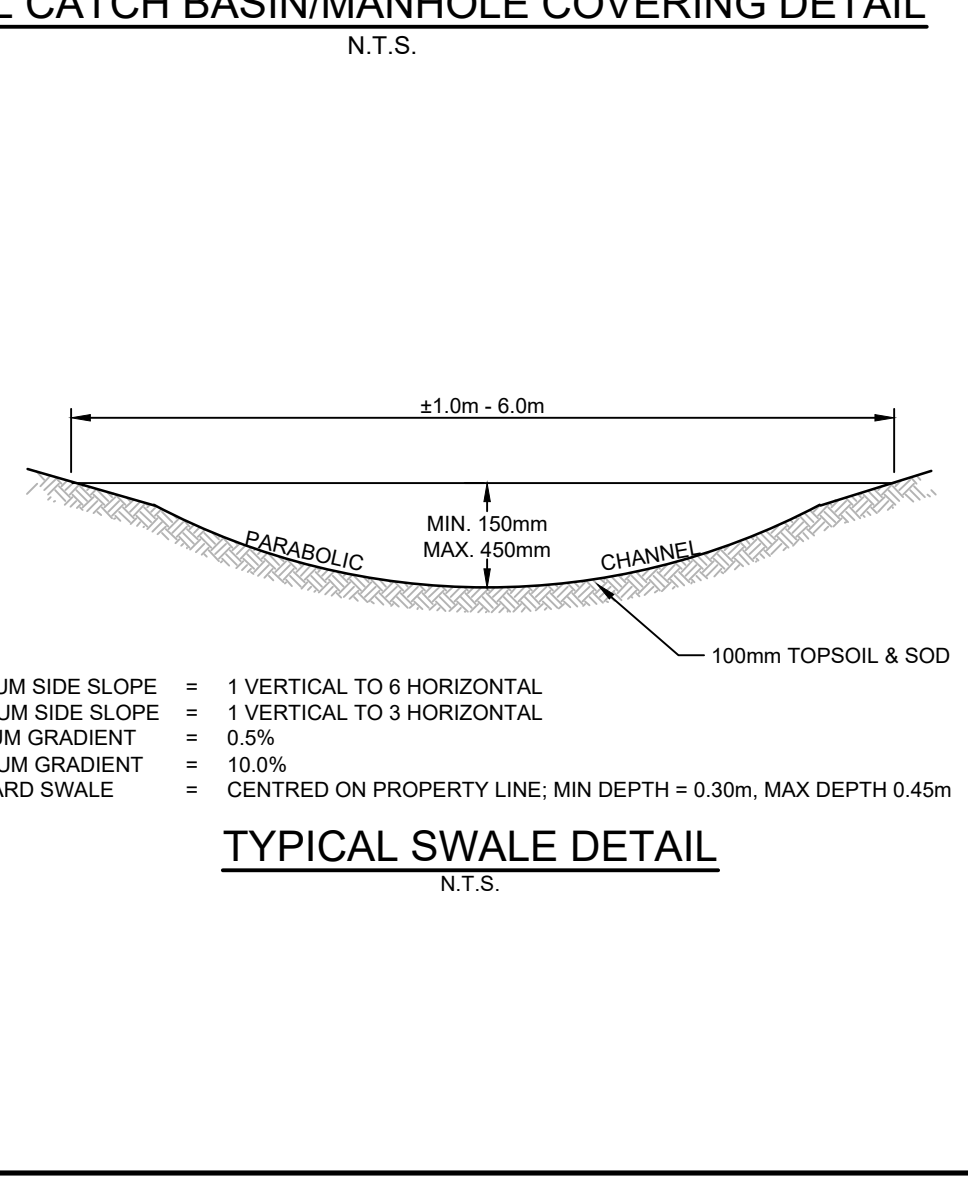
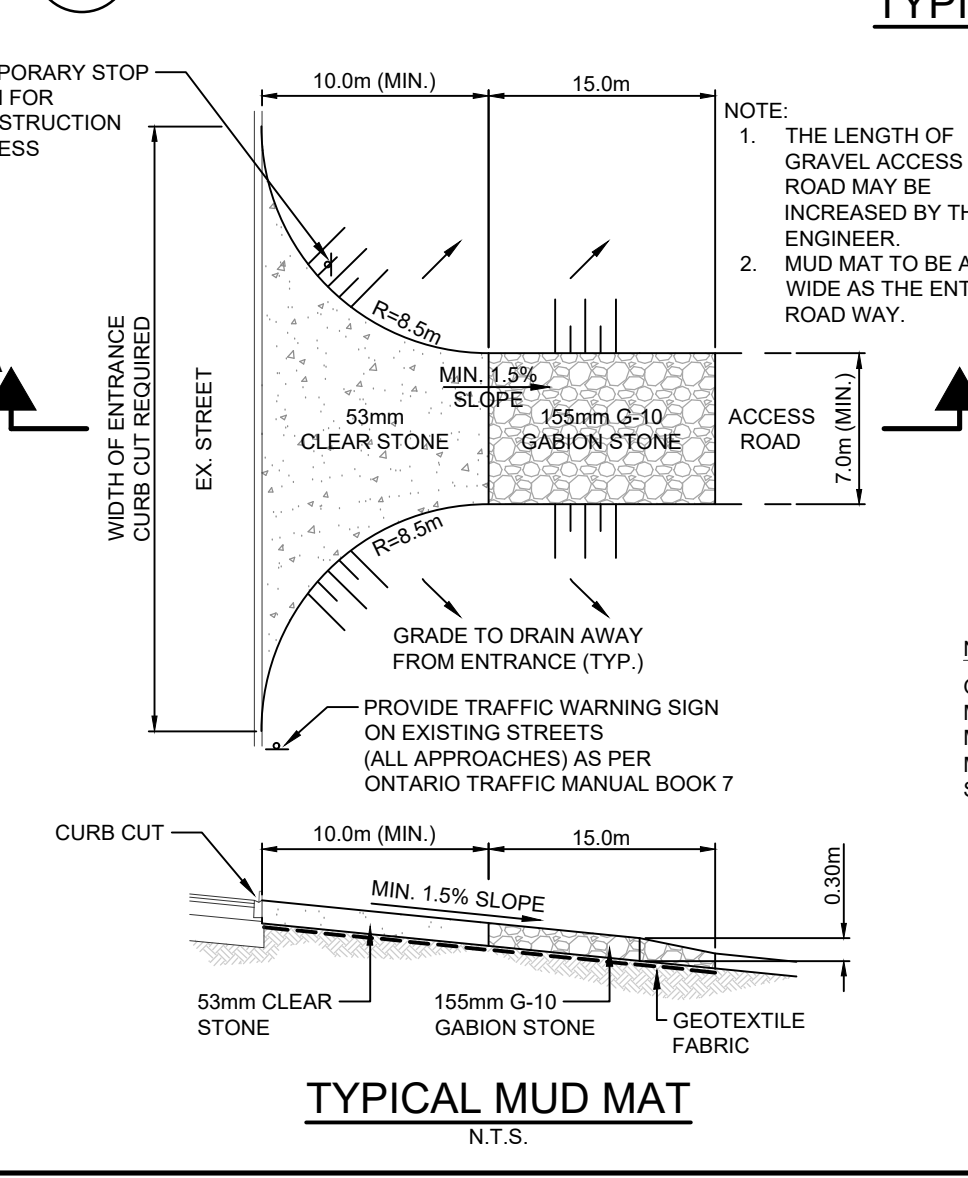
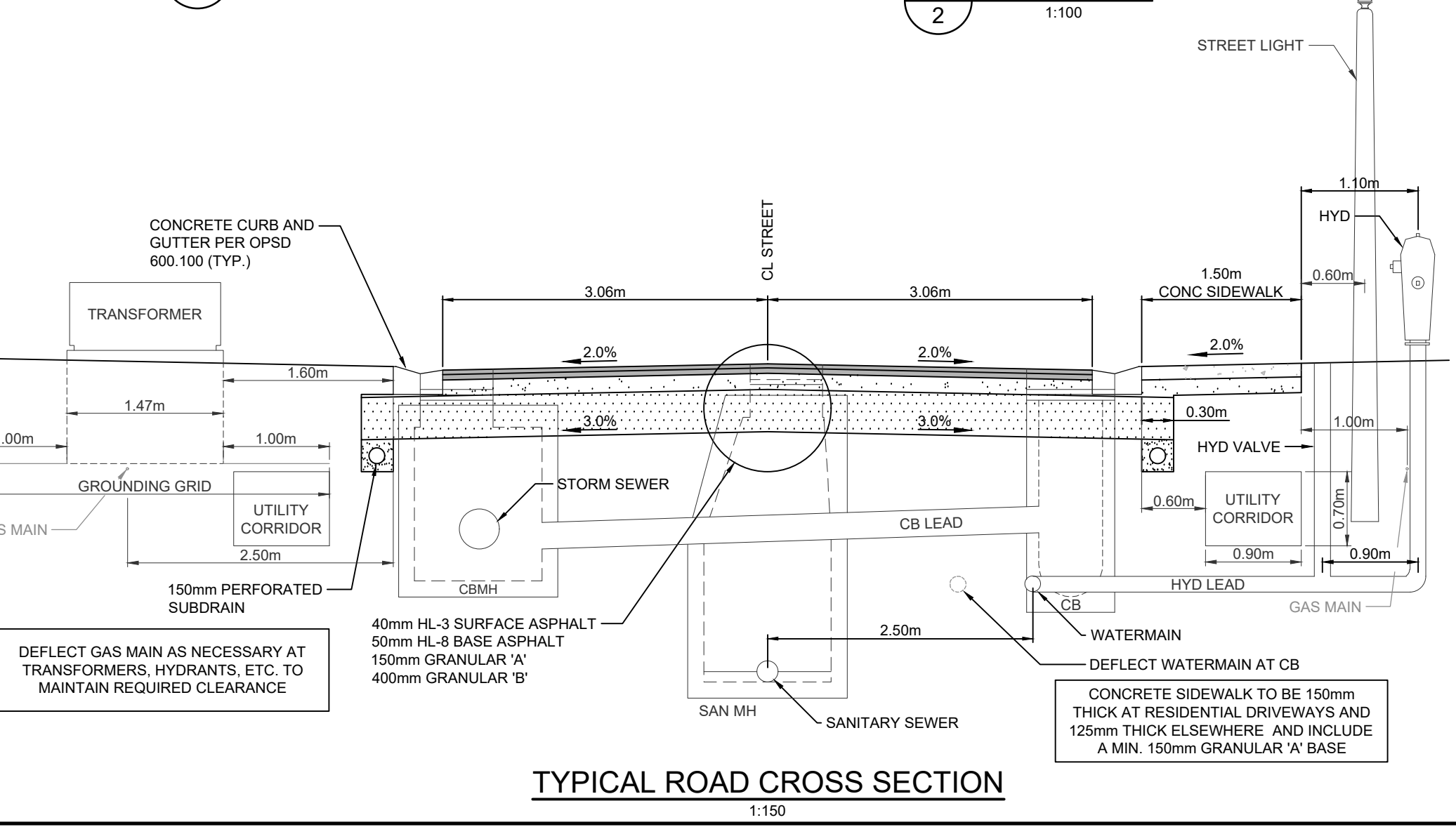
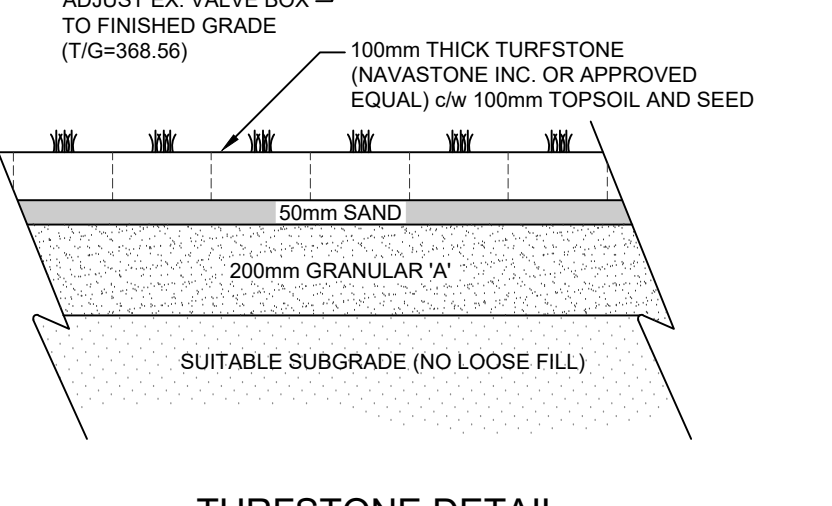
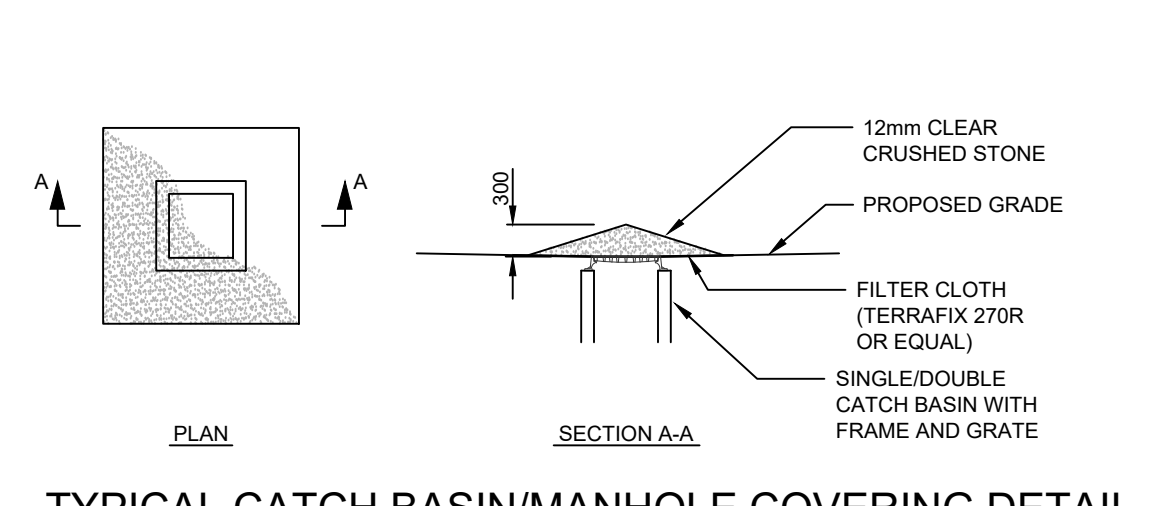
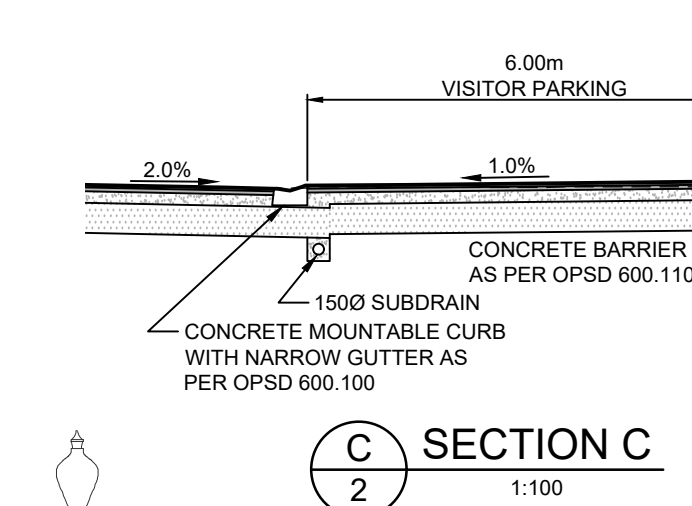
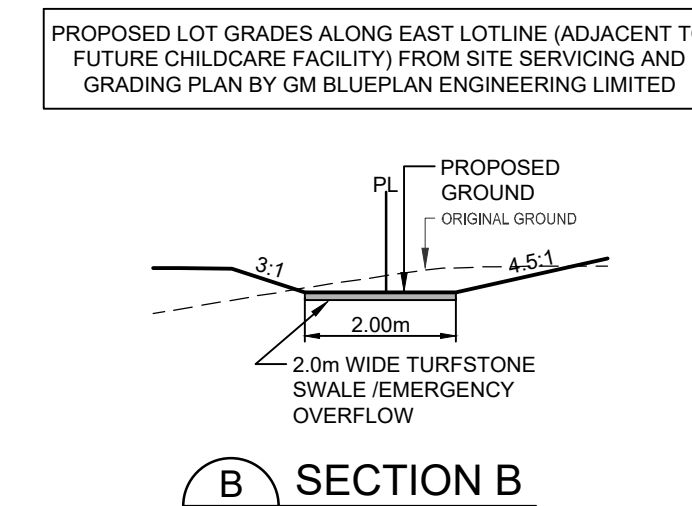
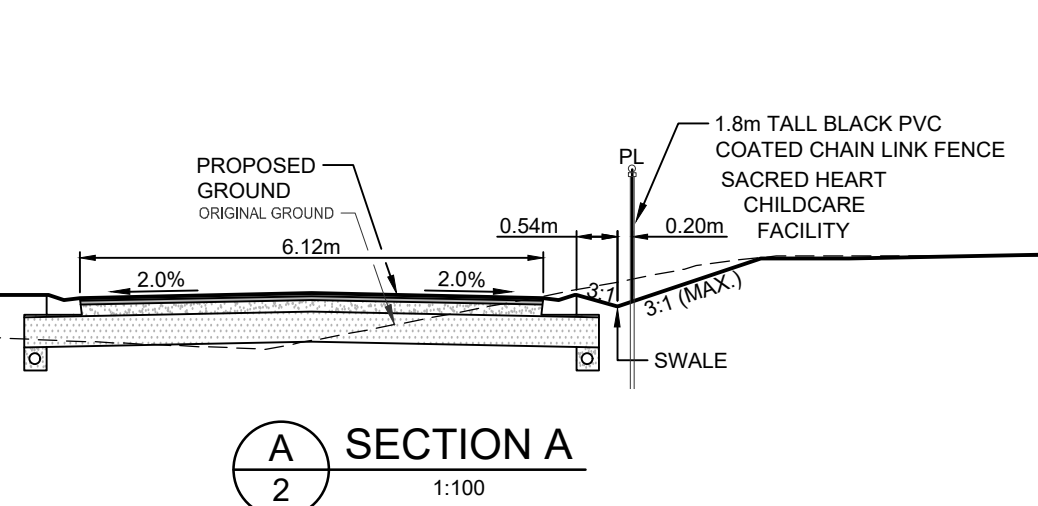
5150 WELLINGTON ROAD 27, ROCKWOOD

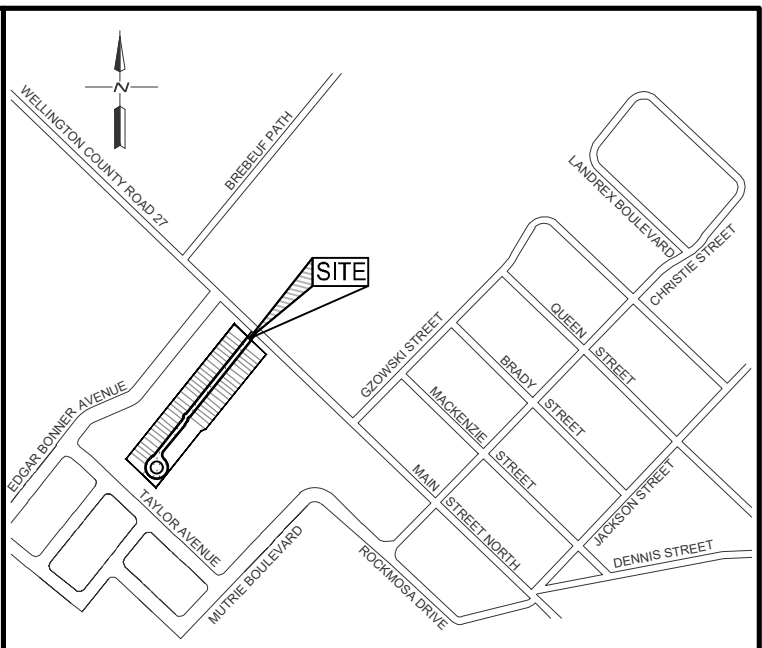
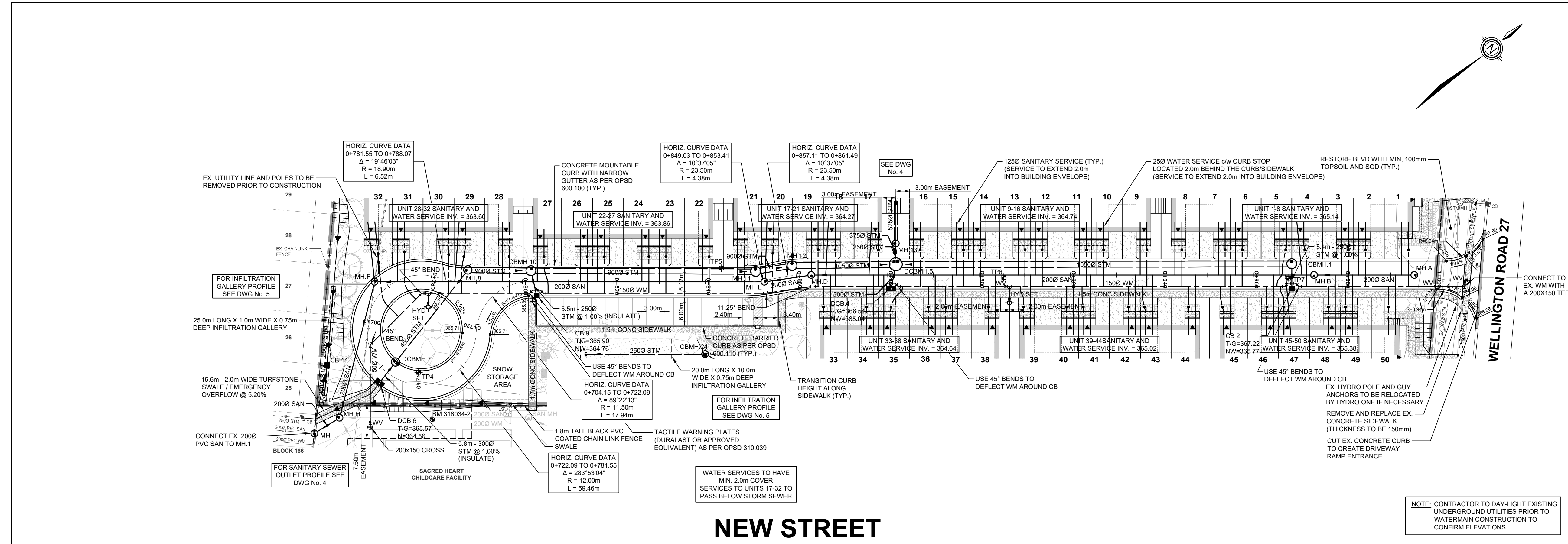
NORTH ROCKWOOD DEVELOPMENTS INC.

TOWNSHIP OF GUELPH-ERAMOS

GRADING AND EROSION CONTROL PLAN

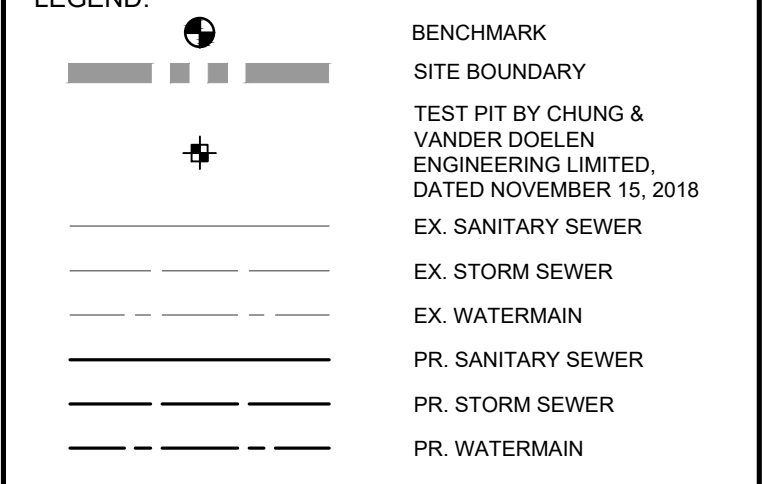
DRAWN BY: S.M.	APPROVED BY: J.K.	PROJECT NO.: 318034	DRAWING NO.: 2
DESIGNED BY: S.M.	DATE: FEBRUARY 2021	SCALE: 1:400	





TOWNSHIP OF GUELPH-ERAMOS (ROCKWOOD)
KEY PLAN
 NOT TO SCALE

- NOTES:
1. TOPOGRAPHIC AND EXISTING FEATURES SURVEY COMPLETED BY VAN HARTEN SURVEYING INC., DATED JULY 2018 AND JANUARY 2021.
 2. LEGAL SURVEY INFORMATION PROVIDED BY VAN HARTEN SURVEYING INC., DATED JULY 2018.
 3. SITE PLAN PREPARED BY ASTRID J. CLOS, DATED APRIL 12, 2021.
 4. LANDSCAPE PLAN PREPARED BY HILL DESIGN STUDIO, DATED APRIL 28, 2021.



BENCH MARKS:

- BM 318034-1 ELEV. 368.530

CUT CROSS ON THE CONCRETE CURB LOCATED ON THE WEST SIDE OF THE ENTRANCE TO SACRED HEART CATHOLIC SCHOOL, SOUTH OF WELLINGTON ROAD 27

- BM 318034-2 ELEV. 366.350

CUT CROSS ON THE CONCRETE CURB LOCATED IN THE SOUTHWEST CORNER OF THE SACRED HEART CHILDCARE FACILITY SITE.

THE POSITION OF POLE LINES, CONDUITS, WATERMANS, SEWERS AND OTHER UNDERGROUND AND OVERGROUND UTILITIES AND STRUCTURES IS NOT NECESSARILY SHOWN ON THE CONTRACT DRAWINGS, AND WHERE SHOWN, THE ACCURACY OF THE POSITION OF SUCH UTILITIES AND STRUCTURES IS NOT GUARANTEED.

BEFORE STARTING WORK, THE CONTRACTOR SHALL INFORM HIMSELF OF THE EXACT LOCATION OF ALL SUCH UTILITIES AND STRUCTURES, AND SHALL ASSUME ALL LIABILITY FOR ANY DAMAGE TO THEM.



NO.	DATE	REVISION DESCRIPTION	CHKD
1	04/13/21	GENERAL REVISIONS - FIRST SUBMISSION FOR APPROVAL	J.K.
0	03/25/21	FIRST SUBMISSION FOR APPROVAL	J.K.

BluePlan
ENGINEERING

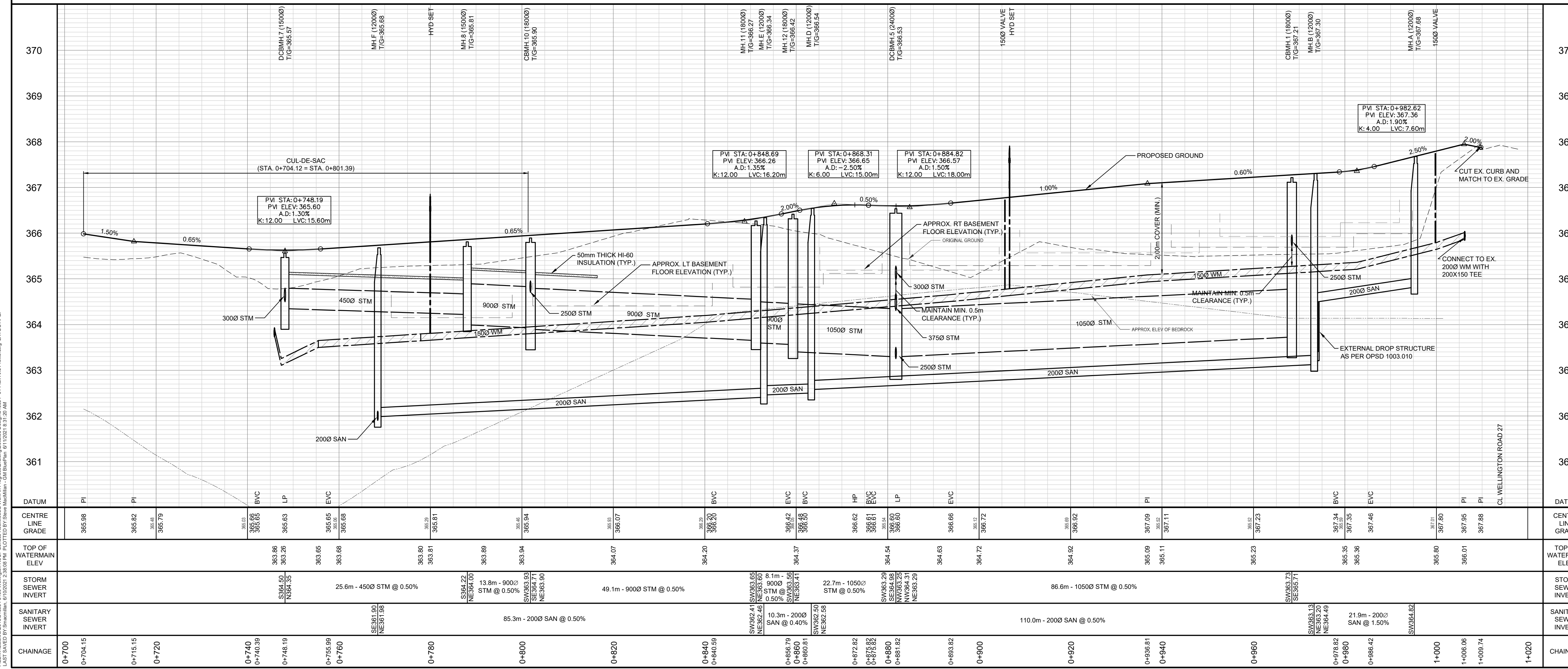
GUELPH | OWEN SOUND | LISTOWEL | RITCHIEBURN | LONDON | HAMILTON | GTA
 975 WALLACE AVENUE NORTH, LISTOWEL, ON N4W 1M8
 TEL 519-291-9339 www.blueplan.ca

5150 WELLINGTON ROAD 27, ROCKWOOD
 NORTH ROCKWOOD DEVELOPMENTS INC.
 TOWNSHIP OF GUELPH-ERAMOS

NEW STREET
 STA. 0+700 TO STA. 1+020

DRAWN BY: S.M. APPROVED BY: J.K. PROJECT NO.: 318034 DRAWING NO.: 3
 DESIGNED BY: S.M. DATE: FEBRUARY 2021 SCALE: HORIZ: 1:500 VERT: 1:50

NEW STREET



FILE: C:\Users\jmc\OneDrive\Documents\Projects\318034-2\New Street\Profile.dwg, LAND/TP/APP
 LAST SAVED BY: jmc, 03/25/21 12:30:00 PM, PLOTTED BY: jmc, 03/25/21 12:30:00 PM, PLOTTER: HP DesignJet 5000 Series, PLOT DATE: 03/25/21 12:30:00 PM

