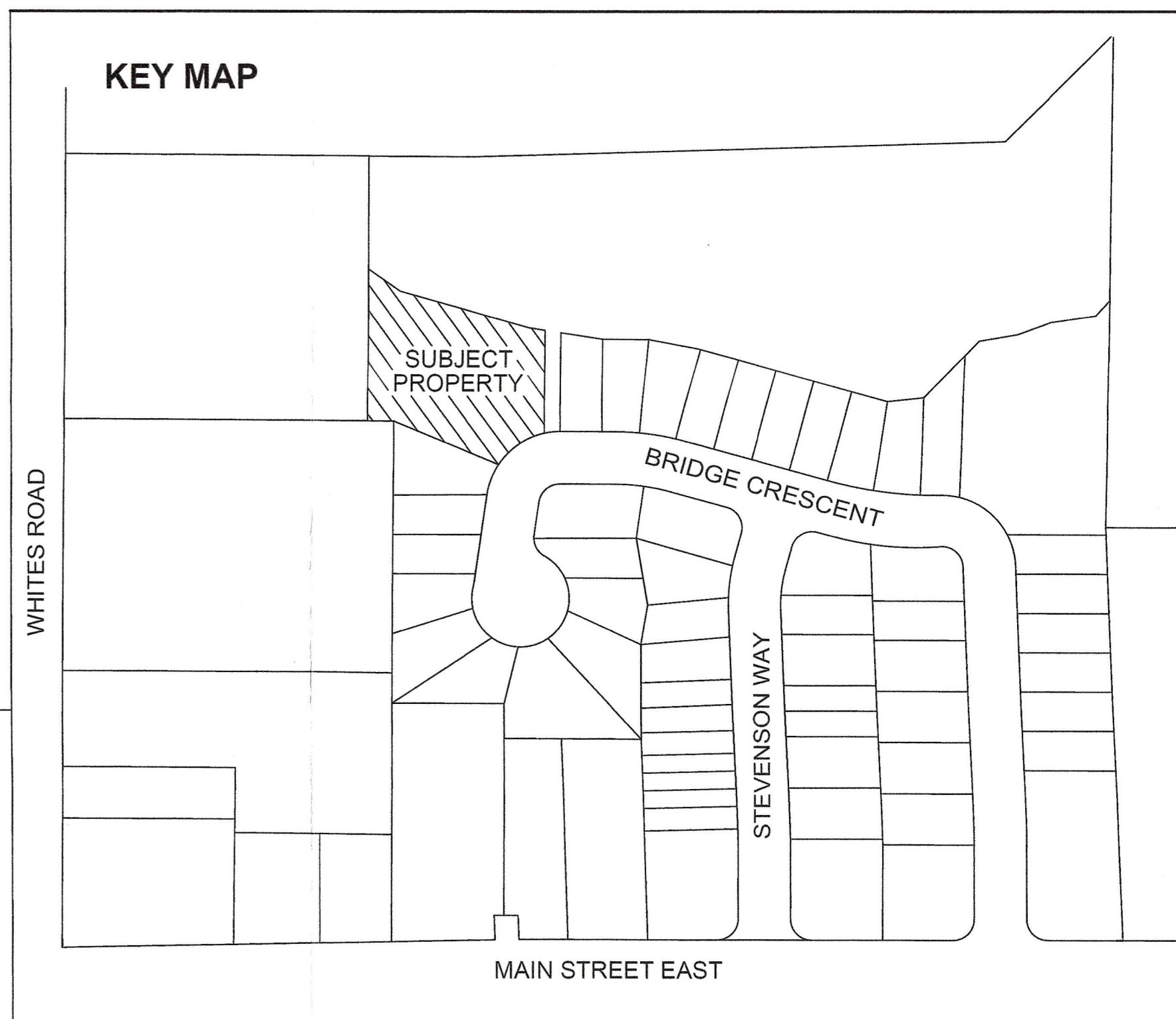


**DRAFT PLAN OF COMMON ELEMENTS CONDOMINIUM  
PART OF BLOCK 26  
REGISTERED PLAN 61M-222  
TOWN OF MINTO  
COUNTY OF WELLINGTON**

SCALE 1 : 200  
VAN HARTEN SURVEYING INC.

**METRIC:**  
DISTANCES SHOWN ON THIS PLAN ARE IN METRES AND CAN BE CONVERTED TO FEET BY DIVIDING BY 0.3048.



**OWNER'S CERTIFICATE**  
IN ACCORDANCE WITH THE REQUIREMENTS OF SECTION 51 OF THE PLANNING ACT, I HEREBY AUTHORIZE VAN HARTEN SURVEYING INC. TO SUBMIT THIS PLAN FOR APPROVAL.

OWNER: WRIGHTHAVEN HOMES LIMITED.

DATE: MAY 15, 2023.

STEVEN WRIGHT  
I HAVE THE AUTHORITY TO BIND THE CORPORATION

**SURVEYOR'S CERTIFICATE**  
I HEREBY CERTIFY THAT THE BOUNDARIES OF THE LANDS TO BE SUBDIVIDED AS SHOWN ON THIS PLAN AND THEIR RELATIONSHIP TO ADJACENT LANDS ARE ACCURATELY AND CORRECTLY SHOWN.

DATE: MAY 15, 2023.

JAMES LAWS, O.L.S.

- SCHEDULE:** RE: SECTION 51 - THE PLANNING ACT.
- (a) BOUNDARIES AS SHOWN
  - (b) WIDTHS OF ROADS AS SHOWN
  - (c) KEY PLAN AS SHOWN
  - (d) PURPOSE OF SITE COMMON ELEMENTS CONDOMINIUM
  - (e) EXISTING USES OF ADJOINING LANDS AS SHOWN
  - (f) DIMENSIONS OF UNITS AS SHOWN (N/A)
  - (g) NATURAL FEATURES (N/A)
  - (h) MUNICIPAL WATER AVAILABLE
  - (i) GRAVEL AND LOAM
  - (j) CONTOURS AS SHOWN (N/A)
  - (k) ALL MUNICIPAL SERVICES AVAILABLE
  - (l) PROPOSED EASEMENTS IN FAVOUR OF BELL CANADA, WIGHTMAN, THE TOWN OF MINTO IN FAVOUR OF STORM, WATER, & SANITARY

**ADDITIONAL INFORMATION**

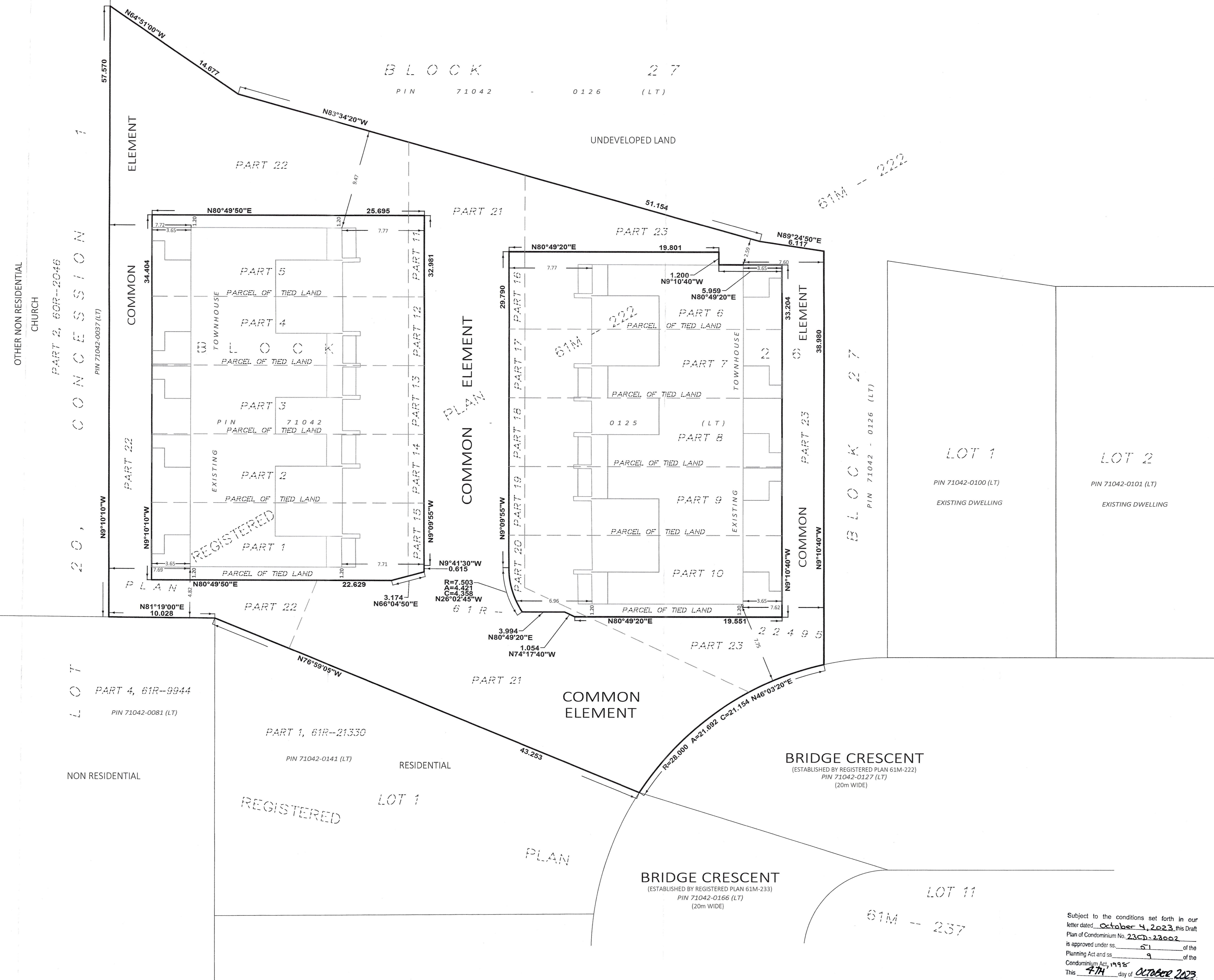
ZONING: RESIDENTIAL R3

AREA OF ENTIRE SITE: 3,431.76m<sup>2</sup>  
COMMON ELEMENT AREA: 1,664.05m<sup>2</sup>

NUMBER OF UNITS RESIDENTIAL POTS: 10  
VISITOR PARKING: 5 VISITOR



Kitchener/Waterloo Ph: 519-742-8371	Guelph Ph: 519-821-2763	Orangeville Ph: 519-940-4110
www.vanharten.com info@vanharten.com		
DRAWN BY: AN	CHECKED BY: PC/EP/JL	PROJECT No. 25431-17
Oct 02, 2023-12:42pm G:\MINTO\61M-222 Palmerston\Condo Block 26\ACAD\DP CONDO (WRIGHTHAVEN) 25431-17 UTM 2020.dwg		



Subject to the conditions set forth in our letter dated October 4, 2023, this Draft Plan of Condominium No. 2300-23002 is approved under s. 51 of the Planning Act and s. 9 of the Condominium Act, 1998. This 4th day of October 2023.

Aldo L. Salis, RPP, M.Eng.  
Director of Planning and Development  
County of Wellington