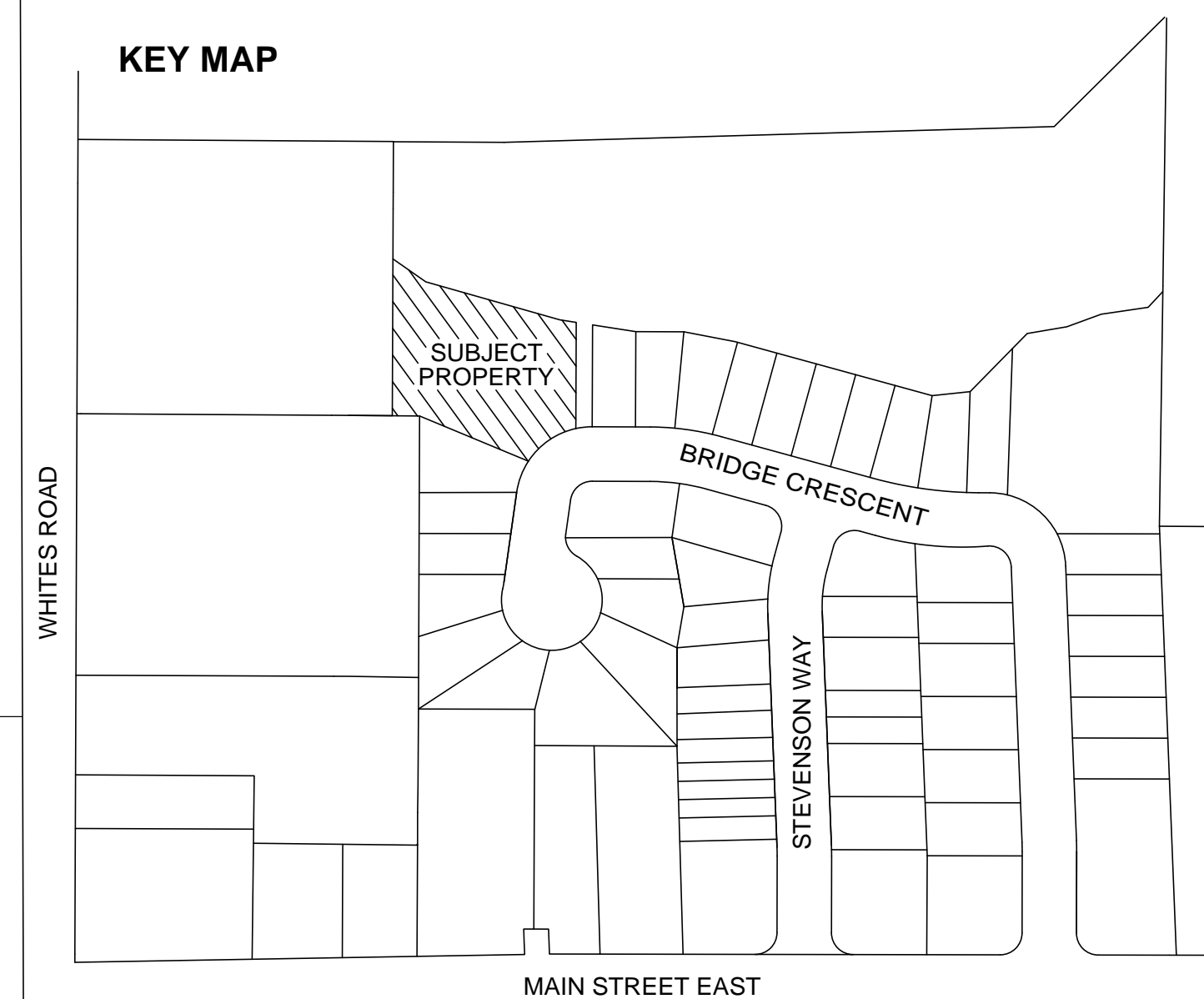


**DRAFT PLAN OF COMMON ELEMENTS CONDOMINIUM
PART OF BLOCK 26
REGISTERED PLAN 61M-222
TOWN OF MINTO
COUNTY OF WELLINGTON**

SCALE 1 : 200
VAN HARTEN SURVEYING INC.

METRIC:
DISTANCES SHOWN ON THIS PLAN ARE IN METRES AND CAN BE CONVERTED TO FEET BY DIVIDING BY 0.3048.

KEY MAP



OWNER'S CERTIFICATE

IN ACCORDANCE WITH THE REQUIREMENTS OF SECTION 51 OF THE PLANNING ACT, I HEREBY AUTHORIZE VAN HARTEN SURVEYING INC. TO SUBMIT THIS PLAN FOR APPROVAL.

OWNER: WRIGHTHAVEN HOMES LIMITED.

DATE: MAY 15, 2023.

Steven Wright
STEVEN WRIGHT
I HAVE THE AUTHORITY TO BIND THE CORPORATION

SURVEYOR'S CERTIFICATE

I HEREBY CERTIFY THAT THE BOUNDARIES OF THE LANDS TO BE SUBDIVIDED AS SHOWN ON THIS PLAN AND THEIR RELATIONSHIP TO ADJACENT LANDS ARE ACCURATELY AND CORRECTLY SHOWN.

DATE: MAY 15, 2023.

James Laws
JAMES LAWS, O.L.S.

SCHEDULE: RE: SECTION 51 - THE PLANNING ACT.

- (a) BOUNDARIES AS SHOWN
- (b) WIDTHS OF ROADS AS SHOWN
- (c) KEY PLAN AS SHOWN
- (d) PURPOSE OF SITE COMMON ELEMENTS CONDOMINIUM
- (e) EXISTING USES OF ADJOINING LANDS AS SHOWN
- (f) DIMENSIONS OF UNITS AS SHOWN (N/A)
- (g) NATURAL FEATURES (N/A)
- (h) MUNICIPAL WATER AVAILABLE
- (i) GRAVEL AND LOAM
- (j) CONTOURS AS SHOWN (N/A)
- (k) ALL MUNICIPAL SERVICES AVAILABLE
- (l) PROPOSED EASEMENTS IN FAVOUR OF BELL CANADA, WIGHTMAN, THE TOWN OF MINTO IN FAVOUR OF STORM, WATER, & SANITARY

ADDITIONAL INFORMATION

ZONING: RESIDENTIAL R3

AREA OF ENTIRE SITE: 3,431.76m²
COMMON ELEMENTS AREA: 1,664.05m²

NUMBER OF UNITS RESIDENTIAL POTS: 10
VISITOR PARKING: 4 VISITOR

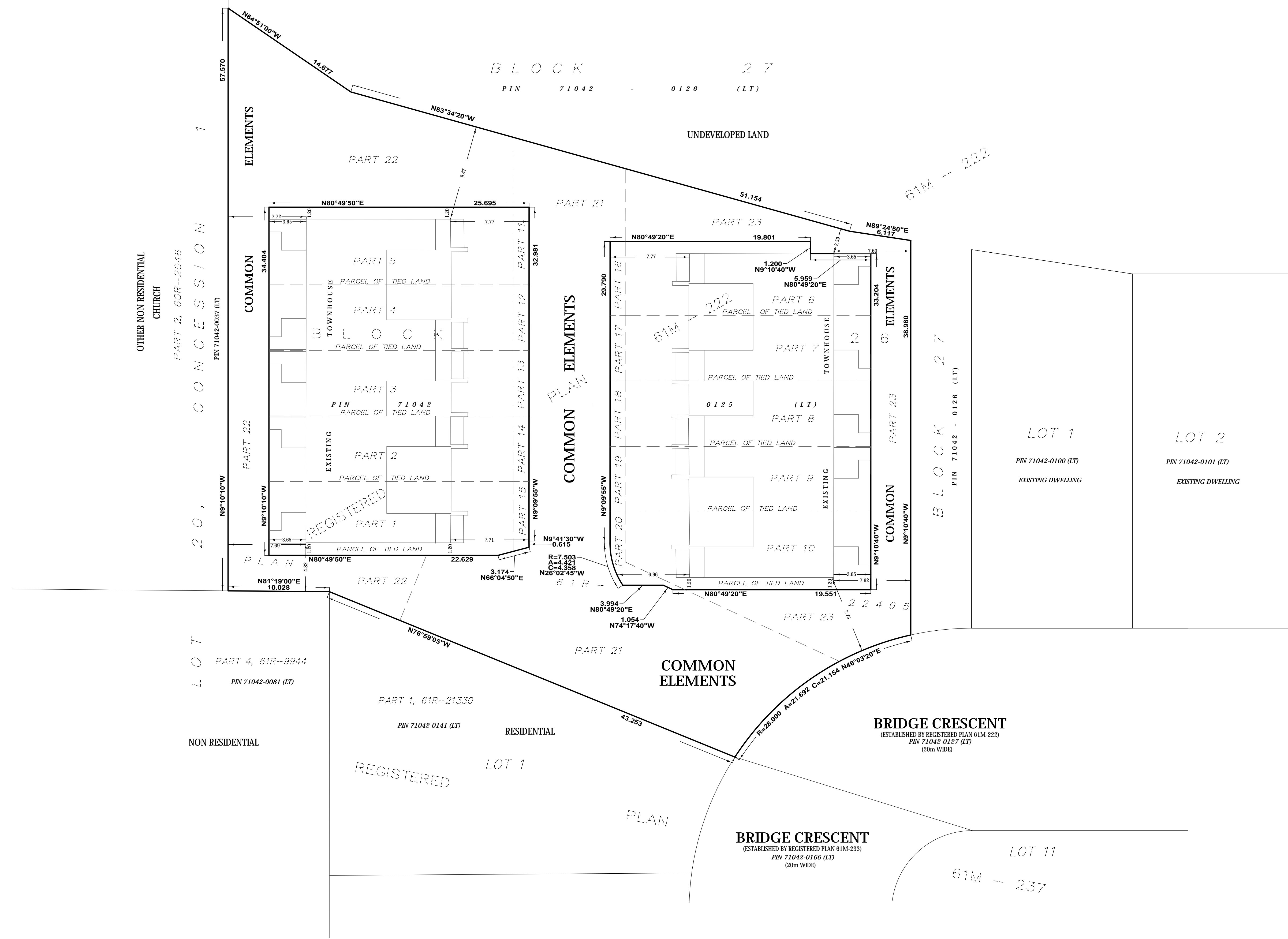


Kitchener/Waterloo Ph: 519-742-8371 Guelph Ph: 519-821-2763 Orangeville Ph: 519-940-4110

www.vanharten.com info@vanharten.com

DRAWN BY: AN CHECKED BY: PC/EP/JL PROJECT No. 25431-17

May 15, 2023 5:38pm
G:\MINTO\61M-222\Palmerston\Condo Block 26\ACAD\DP CONDO (WRIGHTHAVEN)\25431-17 UTM 2020.dwg



OTHER NON RESIDENTIAL CHURCH
PART 2, 60R-2046
CONCESSION
PIN 71042-0037 (LT)

LOT
PART 4, 61R-9944
PIN 71042-0081 (LT)

NON RESIDENTIAL

PART 1, 61R-21330
PIN 71042-0141 (LT)

RESIDENTIAL

BRIDGE CRESCENT
(ESTABLISHED BY REGISTERED PLAN 61M-222)
PIN 71042-0127 (LT)
(20m WIDE)

BRIDGE CRESCENT
(ESTABLISHED BY REGISTERED PLAN 61M-233)
PIN 71042-0166 (LT)
(20m WIDE)

LOT 11
61M - 237

BLOCK 27
PIN 71042 - 0126 (LT)

UNDEVELOPED LAND

61M - 222

BLOCK 27
PIN 71042 - 0126 (LT)

LOT 1
PIN 71042-0100 (LT)
EXISTING DWELLING

LOT 2
PIN 71042-0101 (LT)
EXISTING DWELLING

REGISTERED

COMMON ELEMENTS PLAN

COMMON ELEMENTS

PLAN