

GENERAL NOTES

1. ALL WORKMANSHIP WILL BE TO THE STANDARDS OF LANDSCAPE ONTARIO.
2. ALL PLANT MATERIAL TO BE NO. 1 GRADE NURSERY GROWN IN ACCORDANCE WITH THE CANADIAN STANDARDS FOR NURSERY STOCK, 9TH EDITION, 2017, BY THE CANADIAN NURSERY TRADES ASSOCIATION.
3. BACKFILL WILL CONSIST OF SOIL NATIVE TO THE SITE OR GENERAL SOIL TYPE/CLASS NATIVE TO THE SITE. TOPSOIL TO BE TESTED FOR NUTRIENT VALUE, AND AMENDED FOR OPTIMAL GROWTH AS PER THE RECOMMENDATIONS OF THE SOIL TEST.
4. CONTRACTOR SHALL MAINTAIN ALL LANDSCAPE AREAS UNTIL OWNER'S ACCEPTANCE OF PROJECT.
5. CONTRACTOR TO LOCATE ALL UNDERGROUND UTILITIES.
6. PLANTING MAY BE ADJUSTED TO SUIT LOCATIONS OF SITE UTILITY STRUCTURES/SERVICES.
7. ALL MATERIALS MUST BE APPROVED BY LANDSCAPE ARCHITECT PRIOR TO INSTALLATION.
8. SPREAD MULCH TO A MINIMUM OF 100mm COMPACTED DEPTH ON ALL TREE PITS.
9. CHECK AND VERIFY ALL DIMENSIONS AND QUANTITIES PRIOR TO COMMENCEMENT OF WORK. ANY DISCREPANCIES ARE TO BE REPORTED IN WRITING TO THE LANDSCAPE ARCHITECT. QUANTITIES NOTED WITHIN THE PLAN SUPERCEDE THOSE IN THE PLANT LIST. ANY SUBSTITUTIONS SHALL BE APPROVED BY THE LANDSCAPE ARCHITECT.
10. FINAL INSPECTION AND ACCEPTANCE OF PLANTING WORK SHALL CONCIDE WITH THE FINAL INSPECTION AND ACCEPTANCE OF ALL WORK INCLUDED IN THE CONTRACT.
11. ALL SEEDED SLOPES 3:1 AND GREATER TO RECEIVE EROSION CONTROL MATTING (COIR MAT, OR OTHER WILDLIFE FRIENDLY ALTERNATIVE).
12. SUBMIT A WRITTEN GUARANTEE TO THE EFFECT THAT ALL PLANTS ACCEPTED DURING THE PERIOD OF JANUARY 1st TO JULY 15th SHALL BE GUARANTEED UNTIL JULY 15th THE SECOND FOLLOWING YEAR. PLANTS ACCEPTED DURING THE PERIOD OF JULY 15th TO DECEMBER 31st SHALL BE GUARANTEED FOR TWO YEARS FROM THE DATE OF ACCEPTANCE. THE GUARANTEE PERIODS LISTED ABOVE SHALL APPLY TO ALL 'NURSERY GROWN' PLANTS.
13. AT THE TIME OF FINAL INSPECTION ALL PLANTS SHALL BE IN A HEALTHY, VIGOROUS GROWING CONDITION, PLANTED IN FULL ACCORDANCE WITH DRAWINGS AND CONDITIONS.
14. SITE PLAN INFORMATION AS PER MHBC.
15. GRADING AND SERVICING INFORMATION AS PER MERITECH ENGINEERING.
16. SITE LIGHTING BY COUM ENGINEERING LTD.

NOTE:
SHRUB PLANTING (Vt's) ALONG NORTH EDGE SLOPE ARE NOT COMPENSATION PLANTINGS.
EXACT LOCATIONS OF NATURALIZED PLANTINGS OF Vt's IN THIS LOCATION WILL BE CONFIRMED AT THE TIME OF PLANTING.

COMPENSATION NOTES:
(5) TSUGA CANADENSIS @ 100cm ht., 7gal. POT PROPOSED TO COMPENSATE FOR (1) EXISTING JUGLANS NIGRA TO BE REMOVED.
\$350 REQUIRED COMPENSATION FOR JUGLANS
\$70 PER TSUGA x 5 = \$350 TOTAL COMPENSATION PROVIDED

GRANITE HOMES SOUTH RIVER INC.



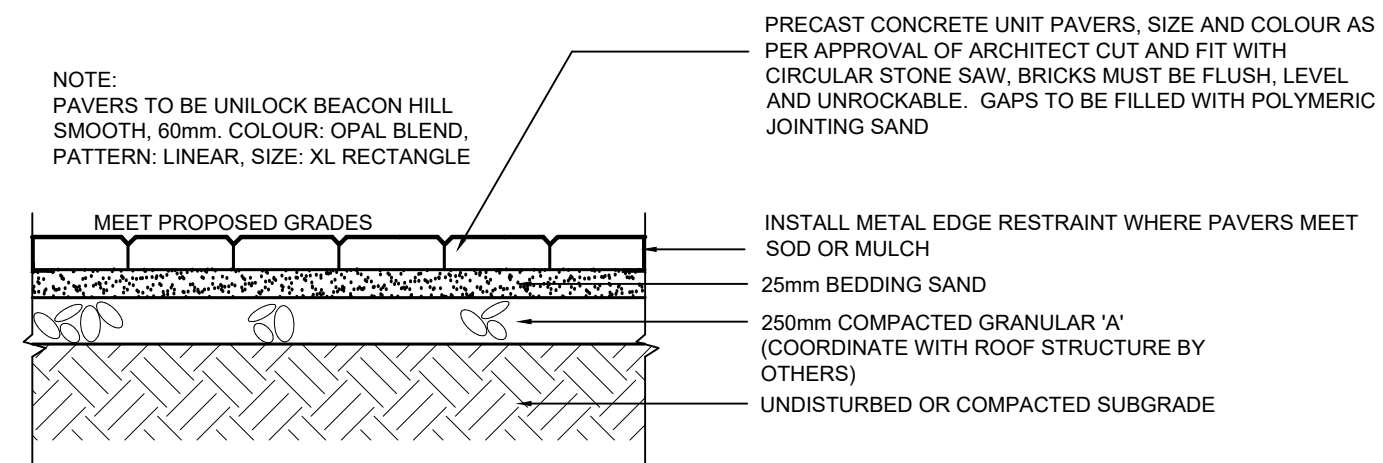
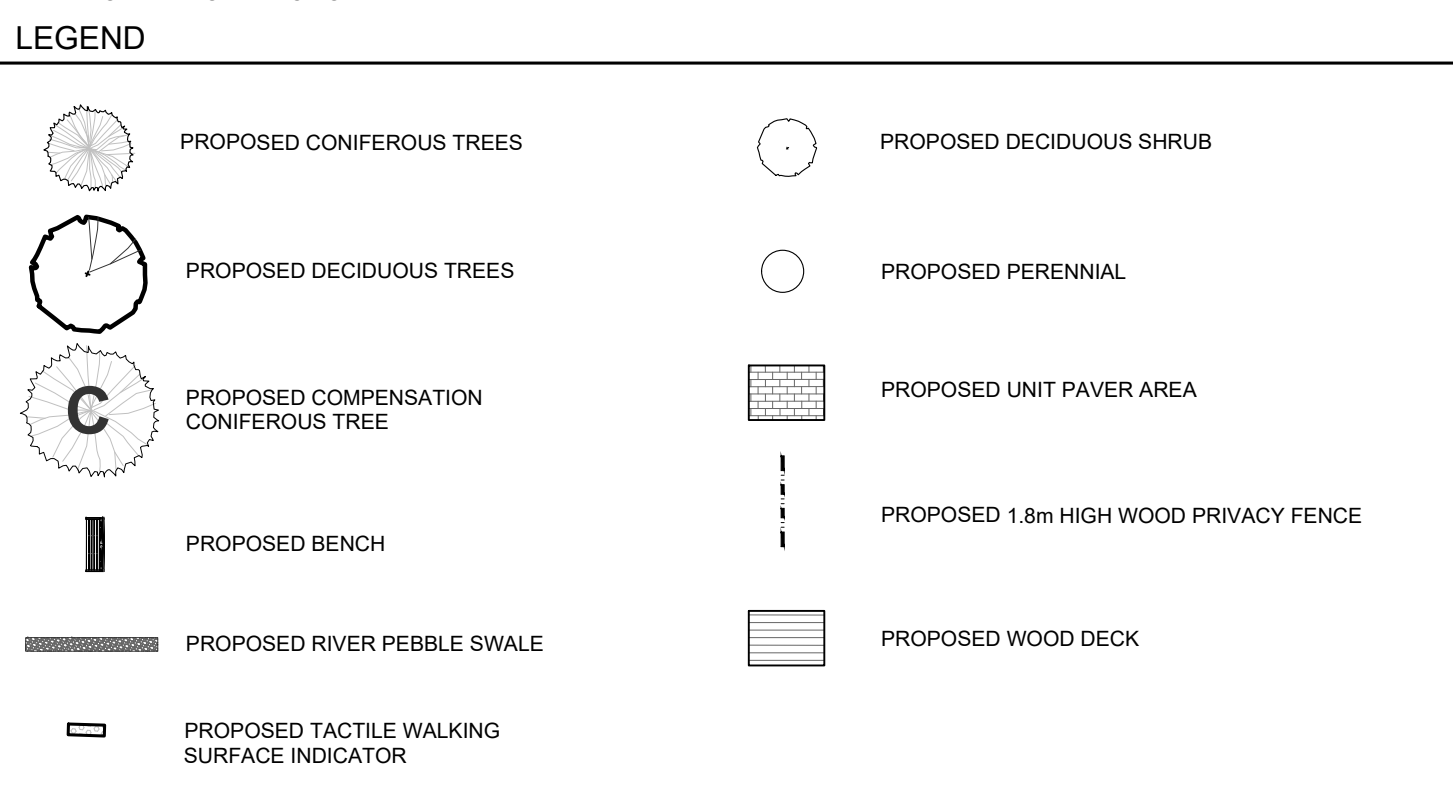
REVISIONS

no.	date	description	by
1.	Jul 21 21	Issued for approval	CMH
2.	Sept 05 23	Revised Landscape Plan	CMH
3.	Sept 20 23	Revised as per comments	CMH

YOUNGBLOOD SUBDIVISION
Block 39
Township of Centre Wellington
Village of Elora
Landscape Plan



PROJECT NO.: 2023-16 DRAWN BY: CMH
SCALE: 1:250 DESIGNED BY: CMH
SHEET: L1 APPROVED BY: AWH
PLOT DATE: SEPT. 20, 2023



PLANT MATERIAL LIST

KEY	QUANT.	BOTANICAL NAME	COMMON NAME	SIZE	COND.
AS	9	Acer saccharum Autumn Fest	Autumn Fest Sugar Maple	60mm cal.	W.B.
CJ	6	Carya ovata	Katsura Tree	60mm cal.	W.B.
CO	7	Pinus callaryana 'Bradford'	Shagbark Hickory	60mm cal.	W.B.
PC	3	Pyrus callaryana 'Baby Blue'	Bradford Ornamental Pear	60mm cal.	W.B.
PP	20	Picea pungens 'Baby Blue'	Baby Blue Spruce	250cm ht.	W.B.
SR	4	Syringa reticulata 'Ivory Silk'	Ivory Silk Lilac	60mm cal.	W.B.
TA	9	Tilia americana	Basswood	60mm cal.	W.B.
TC	10	Tsuga canadensis	Eastern Hemlock	100cm, 7 gal.	Pot
TO	47	Thuja occidentalis 'Nigra'	Black Cedar	250cm ht.	W.B.
DI	77	Diervilla x Kodiak Black	Kodiak Black Honeysuckle	50cm, 3 gal.	Pot
Hm	58	Hydrangea macrophylla Endless Summer Bloomstruck	Bloomstruck Hydrangea	50cm, 3 gal.	Pot
Sc	36	Sambucus canadensis Black Lace	Black Lace Elderberry	50cm, 3 gal.	Pot
Tm	13	Taxus x media 'Densiformis'	Dense Yew	50cm, 3 gal.	Pot
Vc	34	Viburnum carlesii	Korean Spice Viburnum	50cm, 3 gal.	Pot
Vt	16	Viburnum trilobum	Highbush Cranberry	50cm, 3 gal.	Pot
ep	21	Echinacea purpurea 'Merlot'	Merlot Coneflower	1 gal.	Pot
he	34	Hemerocallis 'Hyperion'	Hyperion Daylily	1 gal.	Pot
sn	104	Sorghastrum nutans 'Sioux Blue'	Sioux Blue Indian Grass	1 gal.	Pot
ss	94	Schizachyrium scoparium 'The Blues'	The Blues Little Bluestem	1 gal.	Pot

COMPENSATION PLANTS

TC	5	Tsuga canadensis	Eastern Hemlock	100cm, 7 gal.	Pot
----	---	------------------	-----------------	---------------	-----

