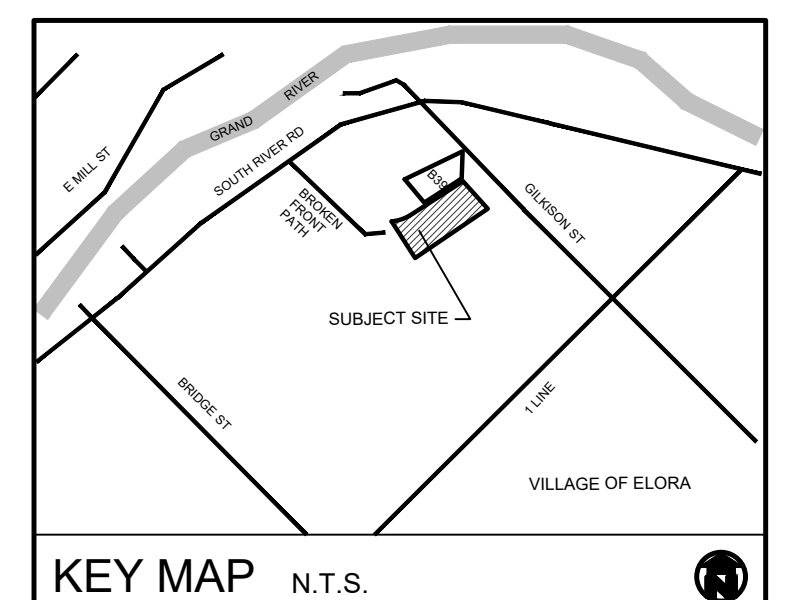


LEGEND

- PRECAST CONCRETE UNIT PAVERS, UNILOCK, BEACON HILL, SMOOTH PAVER, SEE DETAIL.
- CONCRETE, SEE DETAIL.
- PROPOSED DECIDUOUS TREE
- PROPOSED CONIFEROUS TREE
- DECIDUOUS SHRUB
- CONIFEROUS SHRUB
- PERENNIAL
- BIKE RACK, SEE DETAIL.
- 1.8m HIGH SOLID WOOD FENCE, SEE DETAIL.
- 1.0m HIGH POST AND RAIL FENCE, SEE DETAIL.
- LIGHTING
- MAGLIN PIXEL BENCH, SEE DETAIL.
- PROPOSED TRANSFORMER, AS PER ELECTRICAL.

NOTE

450mm DEPTH OF AMENDED TOPSOIL REQUIRED IN ALL PVIOUS LANDSCAPE AREAS.



GENERAL NOTES

1. ALL WORKMANSHIP WILL BE TO THE STANDARDS OF LANDSCAPE ONTARIO.
2. ALL PLANT MATERIAL TO BE NO. 1 GRADE NURSERY GROWN IN ACCORDANCE WITH THE CANADIAN STANDARDS FOR NURSERY STOCK, 9TH EDITION, 2017, BY THE CANADIAN NURSERY TRADES ASSOCIATION.
3. BACKFILL WILL CONSIST OF SOIL NATIVE TO THE SITE OR GENERAL SOIL TYPE/CLASS NATIVE TO THE SITE. TOPSOIL TO BE TESTED FOR NUTRIENT VALUE, AND AMENDED FOR OPTIMAL GROWTH AS PER THE RECOMMENDATIONS OF THE SOIL TEST.
4. CONTRACTOR SHALL MAINTAIN ALL LANDSCAPE AREAS UNTIL OWNER'S ACCEPTANCE OF PROJECT.
5. CONTRACTOR TO LOCATE ALL UNDERGROUND UTILITIES.
6. PLANTING MAY BE ADJUSTED TO SUIT LOCATIONS OF SITE UTILITY STRUCTURES/SERVICES.
7. ALL MATERIALS MUST BE APPROVED BY LANDSCAPE ARCHITECT PRIOR TO INSTALLATION.
8. SPREAD MULCH TO A MINIMUM OF 100mm COMPACTED DEPTH ON ALL TREE PITS AND PLANTING BEDS.
9. CHECK AND VERIFY ALL DIMENSIONS AND QUANTITIES PRIOR TO COMMENCEMENT OF WORK. ANY DISCREPANCIES ARE TO BE REPORTED IN WRITING TO THE LANDSCAPE ARCHITECT. QUANTITIES NOTED WITHIN THE PLAN SUPERCEDE THOSE IN THE PLANT LIST. ANY SUBSTITUTIONS SHALL BE APPROVED BY THE LANDSCAPE ARCHITECT.
10. SOD AS MARKED WITH NURSERY SOD ON A MINIMUM OF 100mm OF CLEAN TOPSOIL. FINE GRADE AND SOD ALL BOULEVARD AREAS TO MUNICIPAL SPECIFICATIONS AND REPAIR DAMAGE TO ADJACENT PROPERTIES, AS REQUIRED.
11. FINAL INSPECTION AND ACCEPTANCE OF PLANTING WORK SHALL COINCIDE WITH THE FINAL INSPECTION AND ACCEPTANCE OF ALL WORK INCLUDED IN THE CONTRACT.
12. ALL SEEDED SLOPES 3:1 AND GREATER TO RECEIVE EROSION CONTROL MATTING. PIN SOD ON ALL SLOPES OF 3:1 OR GREATER.
13. SUBMIT A WRITTEN GUARANTEE TO THE EFFECT THAT ALL PLANTS ACCEPTED DURING THE PERIOD OF JANUARY 1st TO JULY 15th SHALL BE GUARANTEED UNTIL JULY 15th THE FOLLOWING YEAR. PLANTS ACCEPTED DURING THE PERIOD OF JULY 15th TO DECEMBER 31st SHALL BE GUARANTEED FOR ONE YEAR FROM THE DATE OF ACCEPTANCE. THE GUARANTEE PERIODS LISTED ABOVE SHALL APPLY TO ALL "NURSERY GROWN" PLANTS.
14. AT THE TIME OF FINAL INSPECTION ALL PLANTS SHALL BE IN A HEALTHY, VIGOROUS GROWING CONDITION, PLANTED IN FULL ACCORDANCE WITH DRAWINGS AND CONDITIONS.
15. SITE PLAN INFORMATION AS PER ABA ARCHITECTS INC.
16. ENGINEERING AS PER MTE, AND IS PROVIDED FOR INFORMATION ONLY.
17. SITE LIGHTING BY OTHERS



no.	date	description	by
1.	Jul 05 2024	Issued for Approval	JC
2.	Dec 05 2024	Issued for Approval	JC

GRANITE HOMES SOUTH RIVER INC.
 YOUNGBLOOD SUBDIVISION
 Block 40
 Township of Centre Wellington
 Village of Elora
LANDSCAPE PLAN 1



PROJECT NO.: 2024-12	DRAWN BY: JC
SCALE: 1:250	DESIGNED BY: JC
SHEET:	APPROVED BY: AWH
L1	PLOT DATE: Dec 05, 2024

NOTE

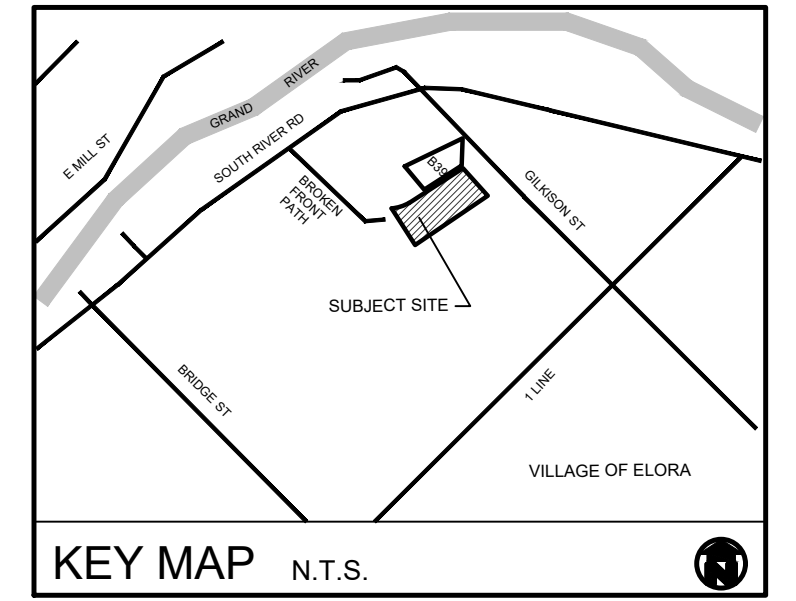
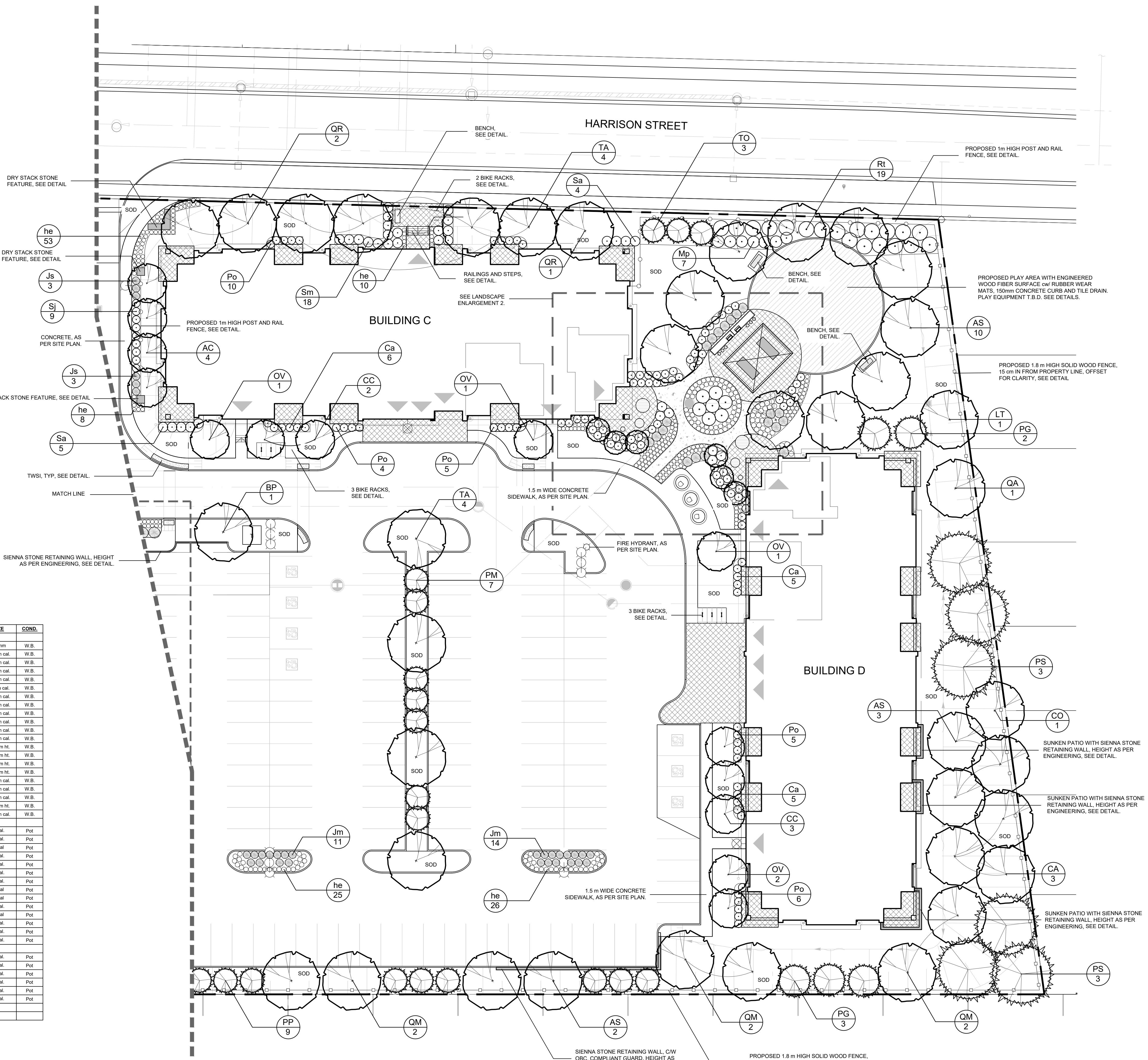
450mm DEPTH OF AMENDED TOPSOIL REQUIRED IN ALL PVIOUS LANDSCAPE AREAS.

LEGEND

- PRECAST CONCRETE UNIT PAVERS, UNILOCK, BEACON HILL, SMOOTH PAVER, SEE DETAIL.
- CONCRETE, SEE DETAIL.
- PROPOSED DECIDUOUS TREE, SEE DETAIL.
- PROPOSED CONIFEROUS TREE, SEE DETAIL.
- DECIDUOUS SHRUB, SEE SITE PLAN.
- CONIFEROUS SHRUB, SEE SITE PLAN.
- PERENNIAL, SEE SITE PLAN.
- BIKE RACK, SEE DETAIL.
- 1.8m HIGH SOLID WOOD FENCE, SEE DETAIL.
- 1.0m HIGH POST AND RAIL FENCE, SEE DETAIL.
- LIGHT POST, SEE DETAIL.
- MAGLIN PIXEL BENCH, SEE DETAIL.
- BENCH, SEE DETAIL.
- PROPOSED TRANSFORMER, AS PER ELECTRICAL.

PLANT LIST

KEY	QUANT	BOTANICAL NAME	COMMON NAME	SIZE	COND.
AR	3	<i>Acer rubrum</i>	Red Maple	60 mm	W.B.
AS	25	<i>Acer saccharum</i>	Sugar Maple	60 mm cal.	W.B.
AC	14	<i>Amelanchier canadensis</i> (Tree form)	Serviceberry	50 mm cal.	W.B.
BP	2	<i>Betula papyrifera</i>	Paper Birch	50 mm cal.	W.B.
CC	10	<i>Carpinus caroliniana</i>	Blue Ceech	60 mm cal.	W.B.
CA	5	<i>Carya ovata</i>	Shagbark Hickory	50mm cal.	W.B.
CO	5	<i>Callis occidentalis</i>	Highberry	60 mm cal.	W.B.
GD	4	<i>Gymnocladus dioica</i>	Kentucky Coffee Tree	60 mm cal.	W.B.
LT	3	<i>Liriodendron tulipifera</i>	Tulip Tree	60 mm cal.	W.B.
MS	6	<i>Magnolia x soulangeana</i> 'Saucer Magnolia'	Saucer Magnolia	60 mm cal.	W.B.
NS	2	<i>Nyssa sylvatica</i>	Black Gum	60 mm cal.	W.B.
OV	11	<i>Ostrya virginiana</i>	Ironwood	60 mm cal.	W.B.
PM	14	<i>Picea glauca</i> 'Montrose Charm'	Montrose Charm Spruce	200 cm ht.	W.B.
PG	12	<i>Picea glauca</i>	White Spruce	200 cm ht.	W.B.
PP	24	<i>Picea pungens</i> 'Fat Albert'	Fat Albert Blue Spruce	200 cm ht.	W.B.
PS	12	<i>Pinus strobus</i>	White Pine	200 cm ht.	W.B.
QA	2	<i>Quercus alba</i>	White Oak	60 mm cal.	W.B.
QM	10	<i>Quercus macrocarpa</i>	Burr Oak	60 mm cal.	W.B.
QR	13	<i>Quercus rubra</i>	Red Oak	60 mm cal.	W.B.
TO	9	<i>Thuja occidentalis</i>	Eastern White Cedar	200 cm ht.	W.B.
TA	22	<i>Tilia americana</i>	Basswood	60 mm cal.	W.B.
Ca	96	<i>Ceanothus americanus</i>	New Jersey Tea	3 gal.	Pot
Cs	24	<i>Cornus sericea</i>	Red Osier Dogwood	3 gal.	Pot
Di	87	<i>Diervilla lonicera</i>	Bush Honeysuckle	3 gal.	Pot
Js	12	<i>Juniperus sabinna</i> 'Blue Danube'	Blue Danube Juniper	3 gal.	Pot
Jm	50	<i>Juniperus sabinna</i> 'Moor-Dense'	Moor-Dense Juniper	3 gal.	Pot
Mp	54	<i>Myrica pensylvanica</i>	Bayberry	3 gal.	Pot
Po	70	<i>Physocarpus opulifolius</i> 'Dart's Gold'	Dart's Gold Ninebark	3 gal.	Pot
Ra	16	<i>Rhus aromatica</i>	Fragrant Sumac	3 gal.	Pot
Rt	41	<i>Rhus typhina</i>	Staghorn Sumac	3 gal.	Pot
Sa	34	<i>Spiraea alba</i>	Meadowweet	3 gal.	Pot
Sf	13	<i>Spiraea japonica</i> 'Froebelii'	Froebelii Spirea	3 gal.	Pot
Sj	18	<i>Spiraea japonica</i> 'Goldflame'	Goldflame Spirea	3 gal.	Pot
Sy	60	<i>Syringa meyeri</i> 'Palibin'	Dwarf Korean Lilac	3 gal.	Pot
Tm	54	<i>Taxus x media</i> 'Densaformis'	Dense Yew	3 gal.	Pot
dc	104	<i>Deschampsia cespitosa</i>	Tufted Hair Grass	1 gal.	Pot
ep	90	<i>Echinacea pallida</i>	Purple Coneflower	1 gal.	Pot
he	276	<i>Hemerocallis</i> 'Stella D'Oro'	Stella D'Oro Day Lily	1 gal.	Pot
rl	126	<i>Rudbeckia fulgida</i> 'Goldsturm'	Black-Eyed Susan	1 gal.	Pot
ss	120	<i>Schizachyrium scoparium</i> 'The Blues'	The Blues Little Blue Stem	1 gal.	Pot
sn	22	<i>Sorghastrum nutans</i>	Indian Grass	1 gal.	Pot



GENERAL NOTES

1. ALL WORKMANSHIP WILL BE TO THE STANDARDS OF LANDSCAPE ONTARIO.
2. ALL PLANT MATERIAL TO BE NO. 1 GRADE NURSERY GROWN IN ACCORDANCE WITH THE CANADIAN STANDARDS FOR NURSERY STOCK, 9TH EDITION, 2017, BY THE CANADIAN NURSERY TRADES ASSOCIATION.
3. BACKFILL WILL CONSIST OF SOIL NATIVE TO THE SITE OR GENERAL SOIL TYPE/CLASS NATIVE TO THE SITE. TOPSOIL TO BE TESTED FOR NUTRIENT VALUE, AND AMENDED FOR OPTIMAL GROWTH AS PER THE RECOMMENDATIONS OF THE SOIL TEST.
4. CONTRACTOR SHALL MAINTAIN ALL LANDSCAPE AREAS UNTIL OWNER'S ACCEPTANCE OF PROJECT.
5. CONTRACTOR TO LOCATE ALL UNDERGROUND UTILITIES.
6. PLANTING MAY BE ADJUSTED TO SUIT LOCATIONS OF SITE UTILITY STRUCTURES/SERVICES.
7. ALL MATERIALS MUST BE APPROVED BY LANDSCAPE ARCHITECT PRIOR TO INSTALLATION.
8. SPREAD MULCH TO A MINIMUM OF 100mm COMPACTED DEPTH ON ALL TREE PITTS AND PLANTING BEDS.
9. CHECK AND VERIFY ALL DIMENSIONS AND QUANTITIES PRIOR TO COMMENCEMENT OF WORK. ANY DISCREPANCIES ARE TO BE REPORTED IN WRITING TO THE LANDSCAPE ARCHITECT. QUANTITIES NOTED WITHIN THE PLAN SUPERCEDE THOSE IN THE PLANT LIST. ANY SUBSTITUTIONS SHALL BE APPROVED BY THE LANDSCAPE ARCHITECT.
10. SOD AS MARKED WITH NURSERY SOD ON A MINIMUM OF 100mm OF CLEAN TOPSOIL. FINE SAND AND SOD ALL SOLEVAARD AREAS TO MUNICIPAL SPECIFICATIONS AND REPAIR DAMAGE TO ADJACENT PROPERTIES, AS REQUIRED.
11. FINAL INSPECTION AND ACCEPTANCE OF PLANTING WORK SHALL COINCIDE WITH THE FINAL INSPECTION AND ACCEPTANCE OF ALL WORK INCLUDED IN THE CONTRACT.
12. ALL SEEDED SLOPES 3:1 AND GREATER TO RECEIVE EROSION CONTROL MATTING. PIN SOD ON ALL SLOPES OF 3:1 OR GREATER.
13. SUBMIT A WRITTEN GUARANTEE TO THE EFFECT THAT ALL PLANTS ACCEPTED DURING THE PERIOD OF JANUARY 1st TO JULY 15th SHALL BE GUARANTEED UNTIL JULY 15th THE FOLLOWING YEAR. PLANTS ACCEPTED DURING THE PERIOD OF JULY 15th TO DECEMBER 31st SHALL BE GUARANTEED FOR ONE YEAR FROM THE DATE OF ACCEPTANCE. THE GUARANTEE PERIODS LISTED ABOVE SHALL APPLY TO ALL "NURSERY GROWN" PLANTS.
14. AT THE TIME OF FINAL INSPECTION ALL PLANTS SHALL BE IN A HEALTHY, VIGOROUS GROWING CONDITION. PLANTED IN FULL ACCORDANCE WITH DRAWINGS AND CONDITIONS.
15. SITE PLAN INFORMATION AS PER ABA ARCHITECTS INC.
16. ENGINEERING AS PER MTE, AND IS PROVIDED FOR INFORMATION ONLY.
17. SITE LIGHTING BY OTHERS

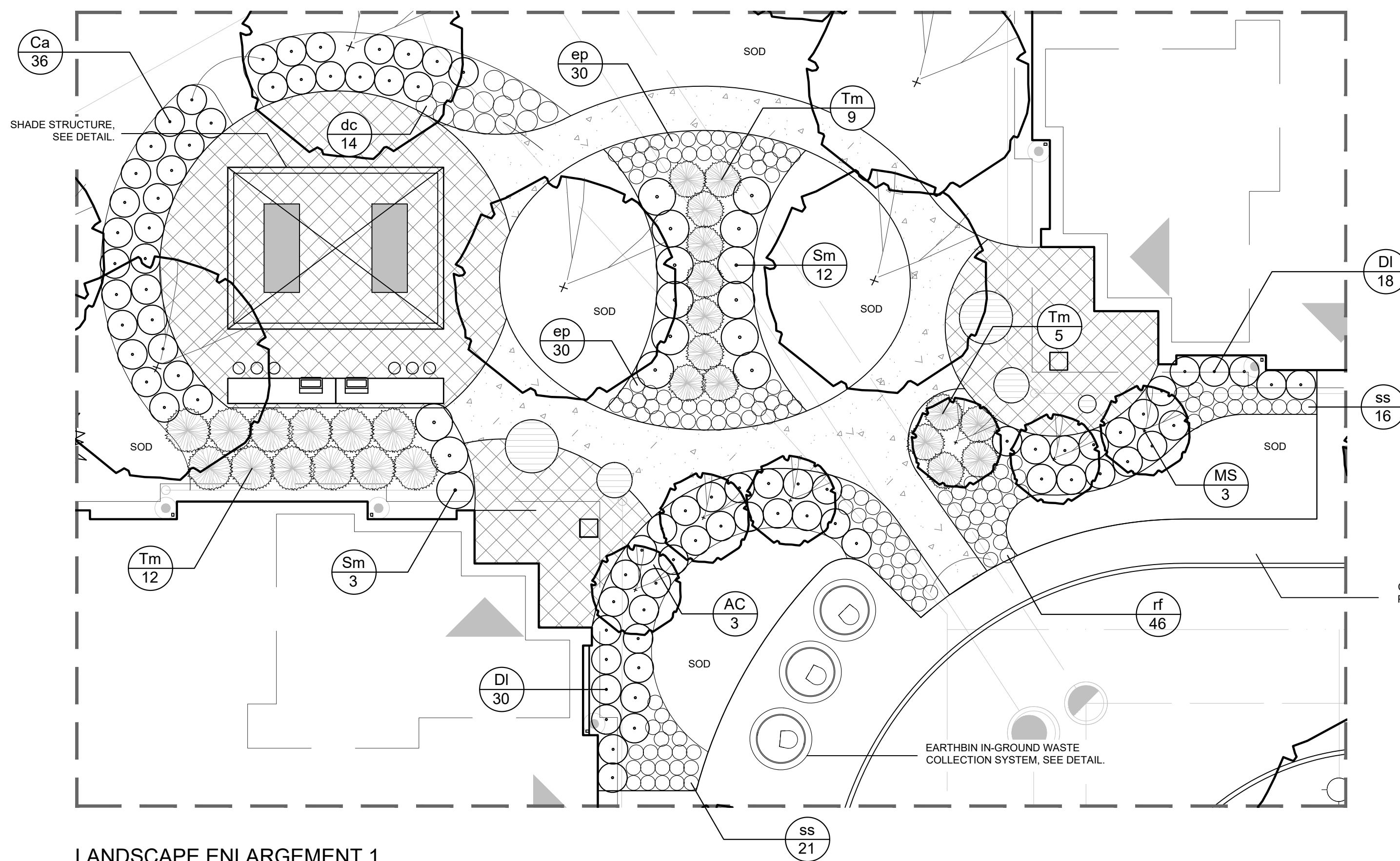


REVISIONS	no.	date	description	by
	1.	Jul 05 2024	Issued for Approval	JC
	2.	Dec 05 2024	Issued for Approval	JC

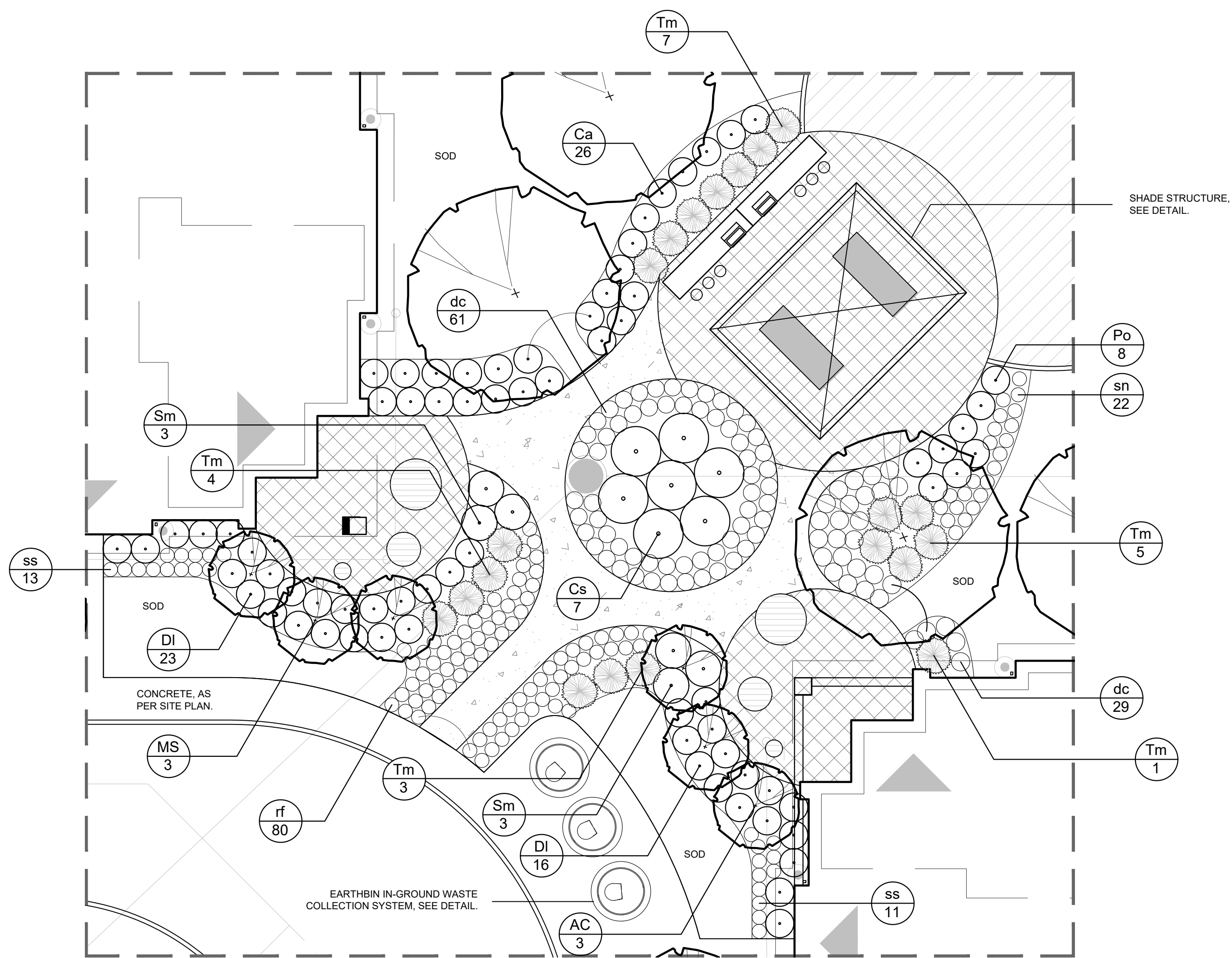
GRANITE HOMES SOUTH RIVER INC.
 YOUNGBLOOD SUBDIVISION
 Block 40
 Township of Centre Wellington
 Village of Elora
LANDSCAPE PLAN 2



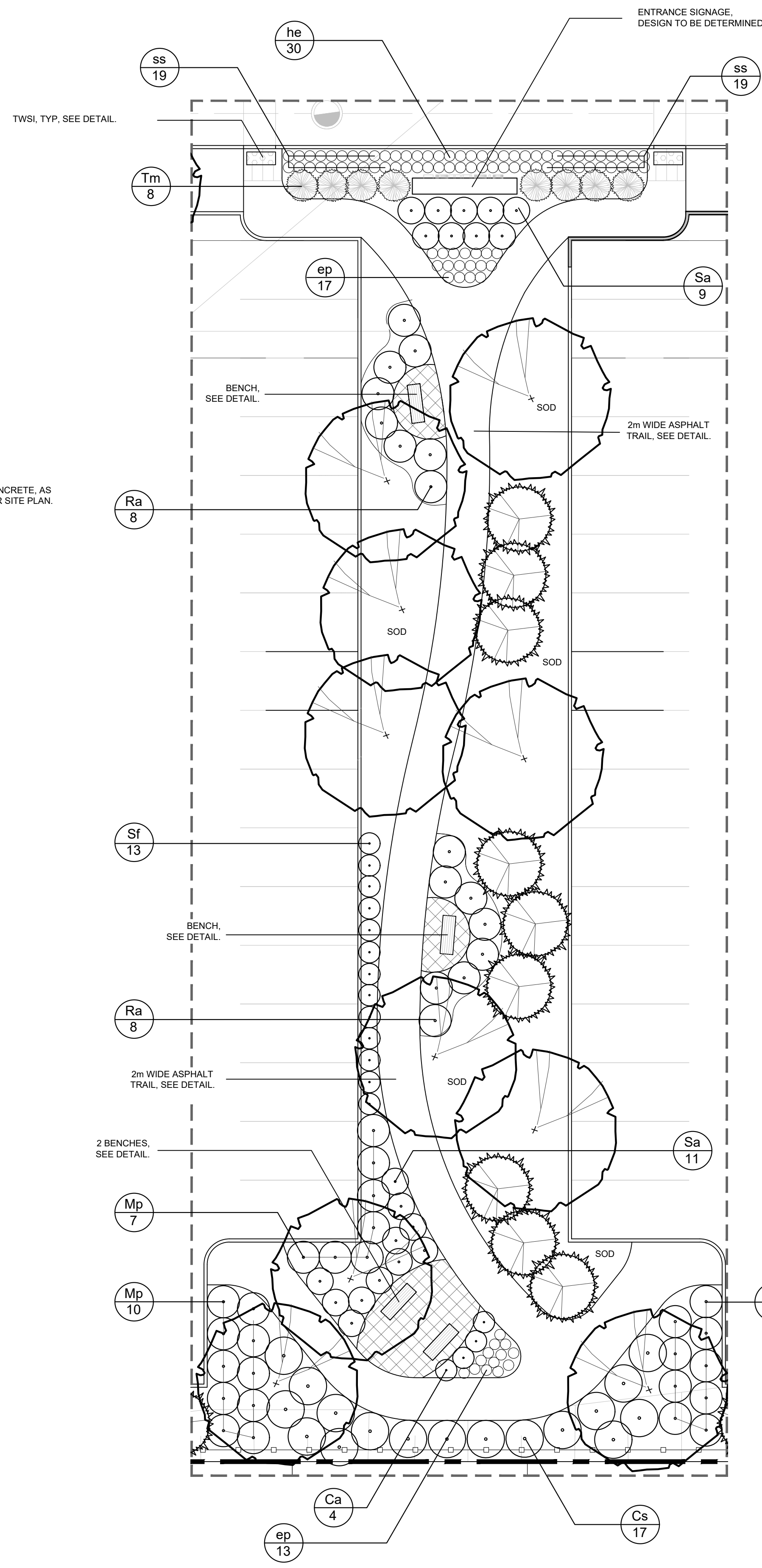
PROJECT NO.: 2024-12 DRAWN BY: JC
 SCALE: 1:250 DESIGNED BY: JC
 SHEET: APPROVED BY: AWH
L2 PLOT DATE: Dec 05, 2024



LANDSCAPE ENLARGEMENT 1
SCALE: 1:125



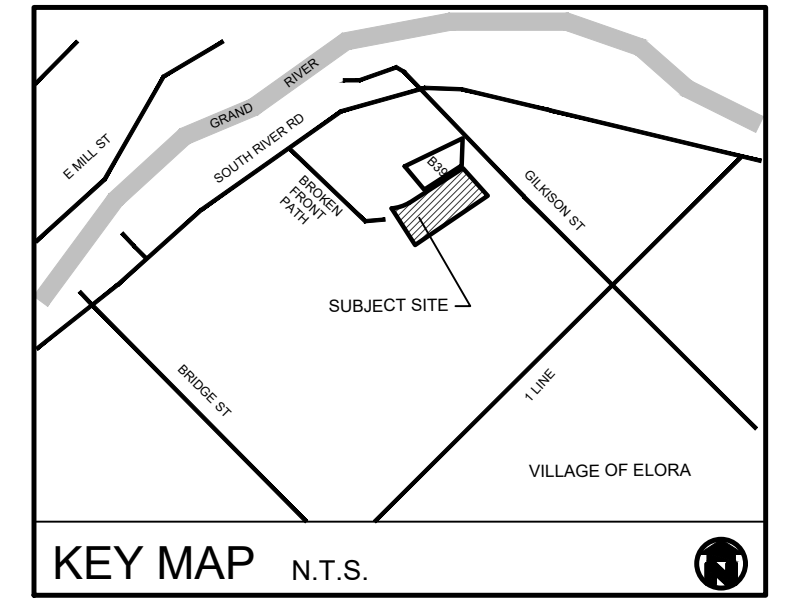
LANDSCAPE ENLARGEMENT 2
SCALE: 1:125



LANDSCAPE ENLARGEMENT 3
SCALE: 1:150

NOTE
450mm DEPTH OF AMENDED TOPSOIL REQUIRED IN ALL PVIOUS LANDSCAPE AREAS.

- LEGEND**
- PRECAST CONCRETE UNIT PAVERS, UNILOCK, BEACON HILL, SMOOTH PAVER, SEE DETAIL.
 - CONCRETE, SEE DETAIL.
 - PROPOSED DECIDUOUS TREE
 - PROPOSED CONIFEROUS TREE
 - DECIDUOUS SHRUB
 - CONIFEROUS SHRUB
 - PERENNIAL
 - BIKE RACK
 - DINING TABLE, BY OWNER
 - MAGLIN PIXEL BENCH, SEE DETAIL.
 - BBQ COOKSTATION, SEE DETAIL.



- GENERAL NOTES**
1. ALL WORKMANSHIP WILL BE TO THE STANDARDS OF LANDSCAPE ONTARIO.
 2. ALL PLANT MATERIAL TO BE NO.1 GRADE NURSERY GROWN IN ACCORDANCE WITH THE CANADIAN STANDARDS FOR NURSERY STOCK, 9TH EDITION, 2017, BY THE CANADIAN NURSERY TRADES ASSOCIATION.
 3. BACKFILL WILL CONSIST OF SOIL NATIVE TO THE SITE OR GENERAL SOIL TYPE/CLASS NATIVE TO THE SITE. TOPSOIL TO BE TESTED FOR NUTRIENT VALUE, AND AMENDED FOR OPTIMAL GROWTH AS PER THE RECOMMENDATIONS OF THE SOIL TEST.
 4. CONTRACTOR SHALL MAINTAIN ALL LANDSCAPE AREAS UNTIL OWNER'S ACCEPTANCE OF PROJECT.
 5. CONTRACTOR TO LOCATE ALL UNDERGROUND UTILITIES.
 6. PLANTING MAY BE ADJUSTED TO SUIT LOCATIONS OF SITE UTILITY STRUCTURES/SERVICES.
 7. ALL MATERIALS MUST BE APPROVED BY LANDSCAPE ARCHITECT PRIOR TO INSTALLATION.
 8. SPREAD MULCH TO A MINIMUM OF 100mm COMPACTED DEPTH ON ALL TREE PITTS AND PLANTING BEDS.
 9. CHECK AND VERIFY ALL DIMENSIONS AND QUANTITIES PRIOR TO COMMENCEMENT OF WORK. ANY DISCREPANCIES ARE TO BE REPORTED IN WRITING TO THE LANDSCAPE ARCHITECT. QUANTITIES NOTED WITHIN THE PLAN SUPERCEDE THOSE IN THE PLANT LIST. ANY SUBSTITUTIONS SHALL BE APPROVED BY THE LANDSCAPE ARCHITECT.
 10. SOD AS MARKED WITH NURSERY SOD ON A MINIMUM OF 100mm OF CLEAN TOPSOIL. FINE GRADE AND SOD ALL BOULEVARD AREAS TO MUNICIPAL SPECIFICATIONS AND REPAIR DAMAGE TO ADJACENT PROPERTIES, AS REQUIRED.
 11. FINAL INSPECTION AND ACCEPTANCE OF PLANTING WORK SHALL COINCIDE WITH THE FINAL INSPECTION AND ACCEPTANCE OF ALL WORK INCLUDED IN THE CONTRACT.
 12. ALL SEEDED SLOPES 3:1 AND GREATER TO RECEIVE EROSION CONTROL MATTING. PIN SOD ON ALL SLOPES OF 3:1 OR GREATER.
 13. SUBMIT A WRITTEN GUARANTEE TO THE EFFECT THAT ALL PLANTS ACCEPTED DURING THE PERIOD OF JANUARY 1st TO JULY 15th SHALL BE GUARANTEED UNTIL JULY 15th THE FOLLOWING YEAR. PLANTS ACCEPTED DURING THE PERIOD OF JULY 15th TO DECEMBER 31st SHALL BE GUARANTEED FOR ONE YEAR FROM THE DATE OF ACCEPTANCE. THE GUARANTEE PERIODS LISTED ABOVE SHALL APPLY TO ALL "NURSERY GROWN" PLANTS.
 14. AT THE TIME OF FINAL INSPECTION ALL PLANTS SHALL BE IN A HEALTHY, VIGOROUS GROWING CONDITION, PLANTED IN FULL ACCORDANCE WITH DRAWINGS AND CONDITIONS.
 15. SITE PLAN INFORMATION AS PER ABA ARCHITECTS INC.
 16. ENGINEERING AS PER MTE, AND IS PROVIDED FOR INFORMATION ONLY.
 17. SITE LIGHTING BY OTHERS

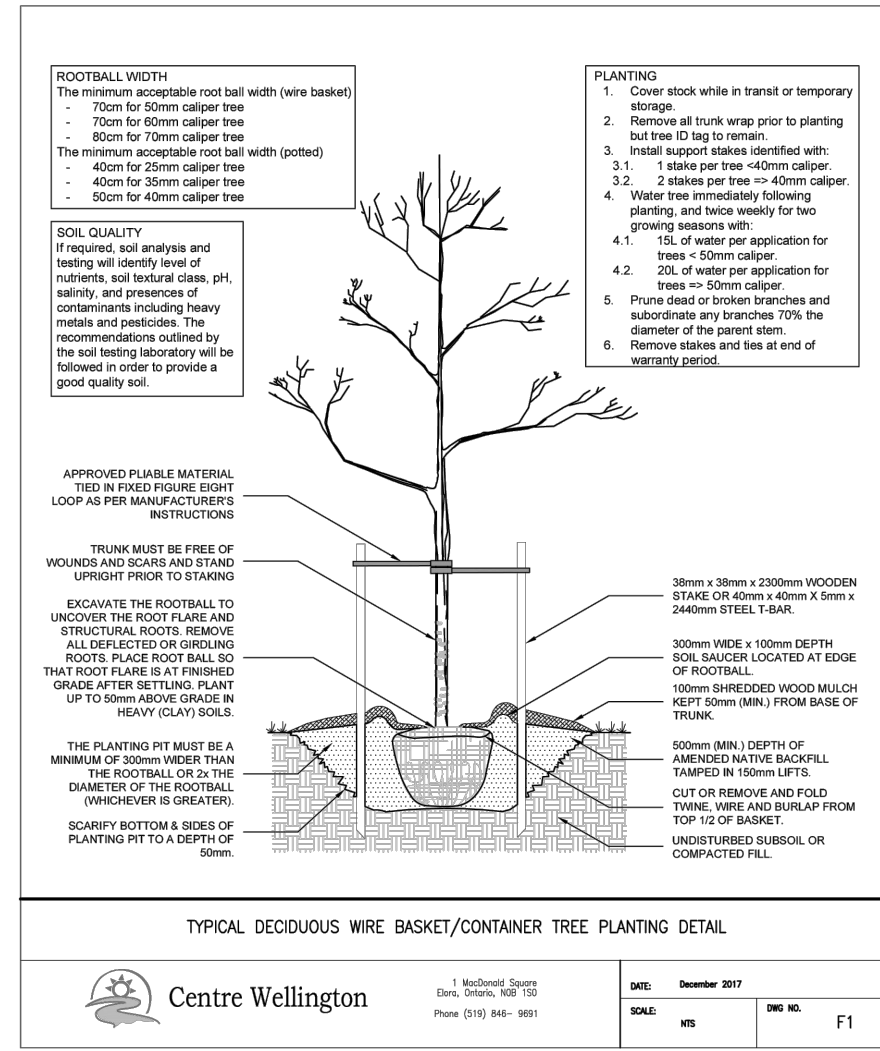


REVISIONS	no.	date	description	by
1.	Jul 05 2024	Issued for Approval	JC	JC
2.	Dec 05 2024	Issued for Approval	JC	JC

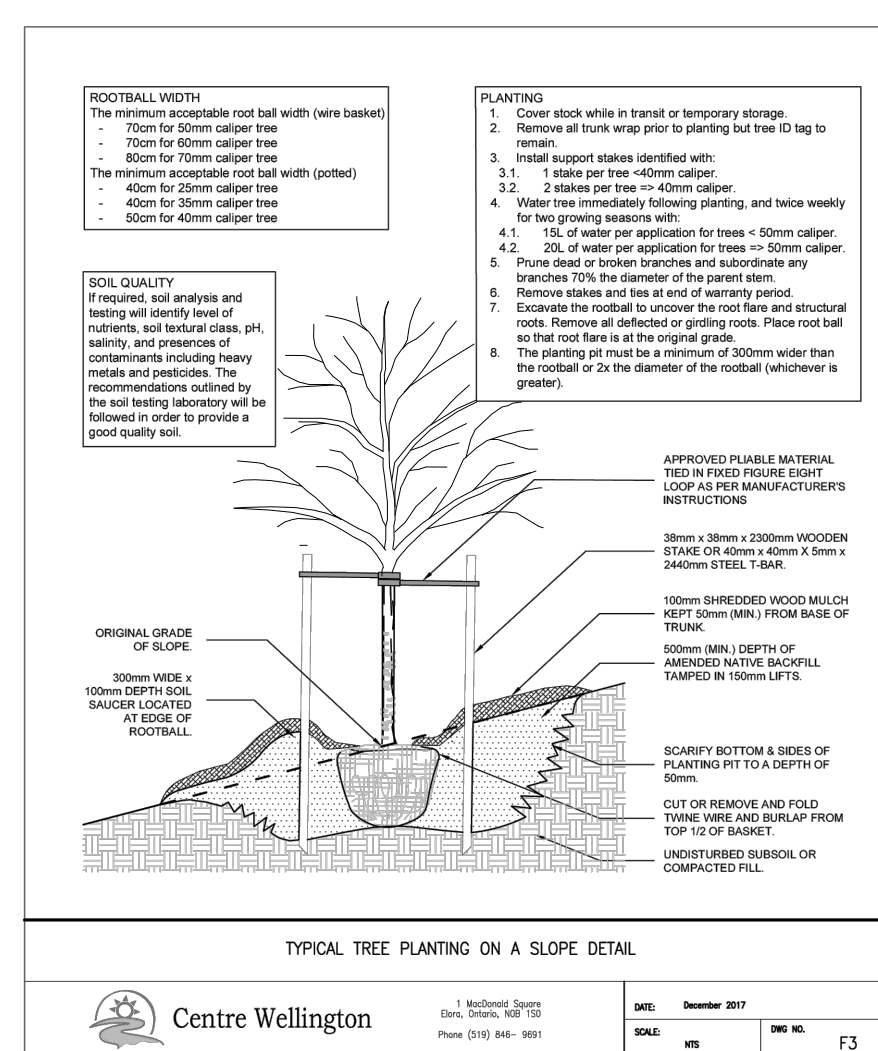
GRANITE HOMES SOUTH RIVER INC.
YOUNGBLOOD SUBDIVISION
Block 40
Township of Centre Wellington
Village of Elora
ENLARGEMENTS



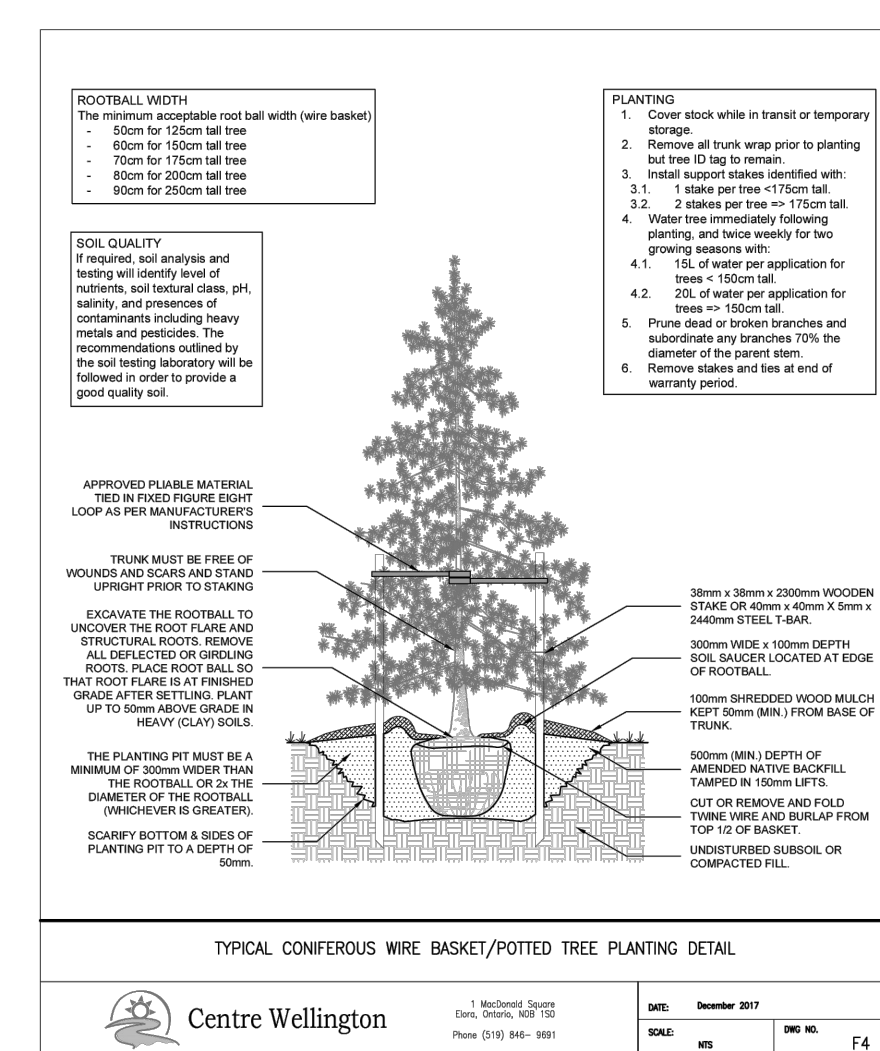
PROJECT NO.: 2024-12	DRAWN BY: JC
SCALE:	DESIGNED BY: JC
SHEET:	APPROVED BY: AWH
L3	PLOT DATE: Dec 05, 2024



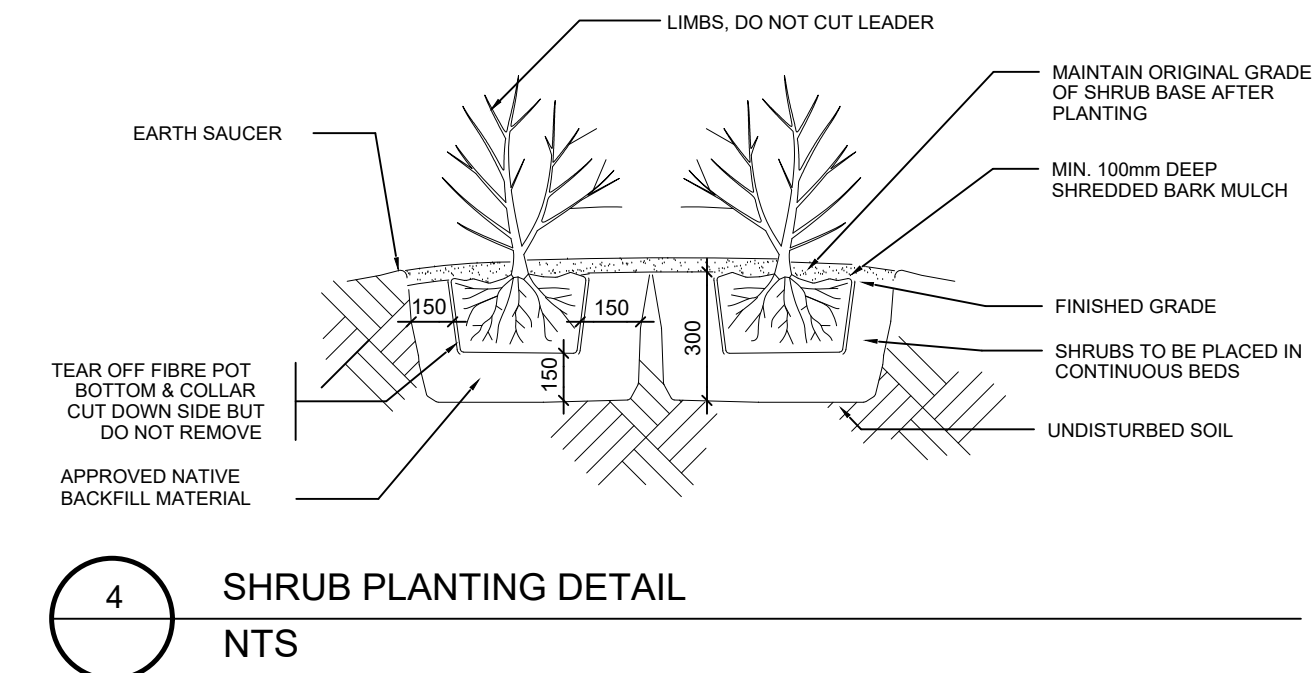
1 CENTRE WELLINGTON STANDARD DECIDUOUS TREE PLANTING DETAIL NTS



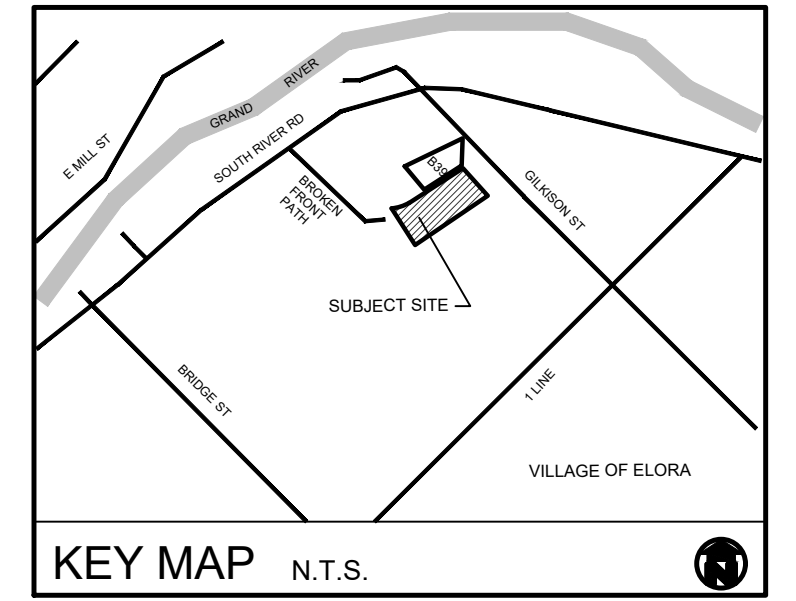
2 CENTRE WELLINGTON STANDARD TREE PLANTING ON A SLOPE DETAIL NTS



3 CENTRE WELLINGTON STANDARD CONIFEROUS TREE PLANTING DETAIL NTS



4 SHRUB PLANTING DETAIL NTS

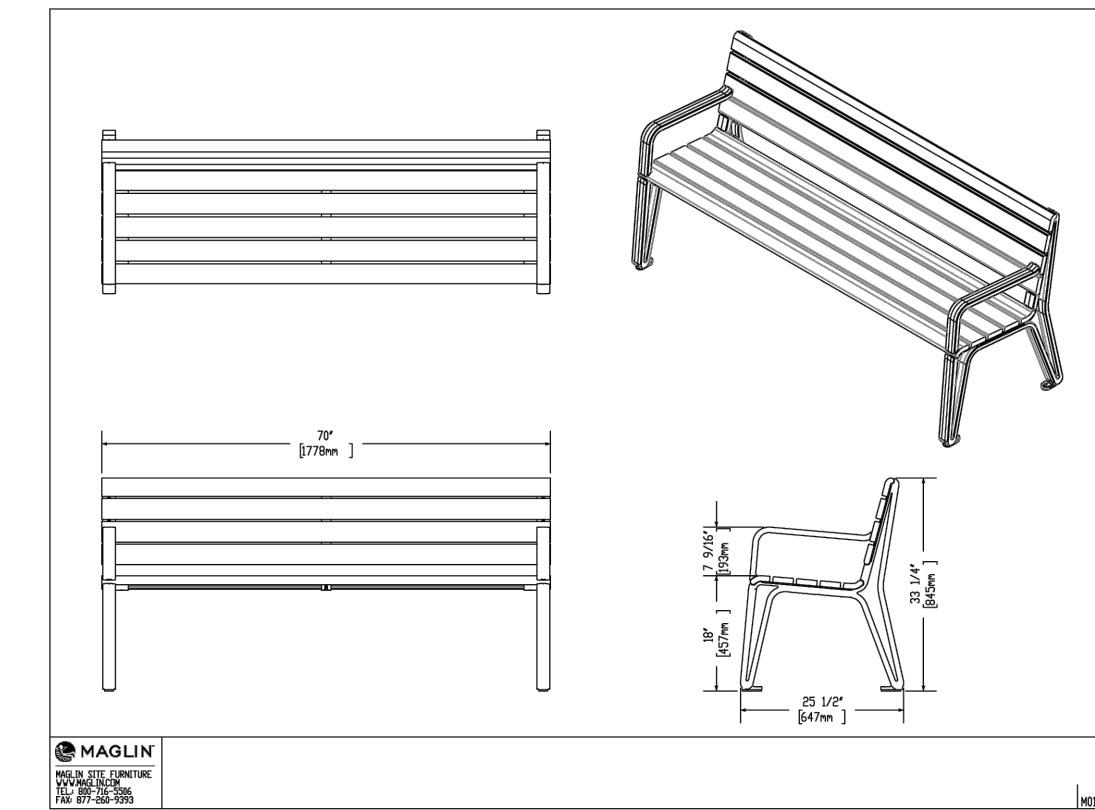


GENERAL NOTES

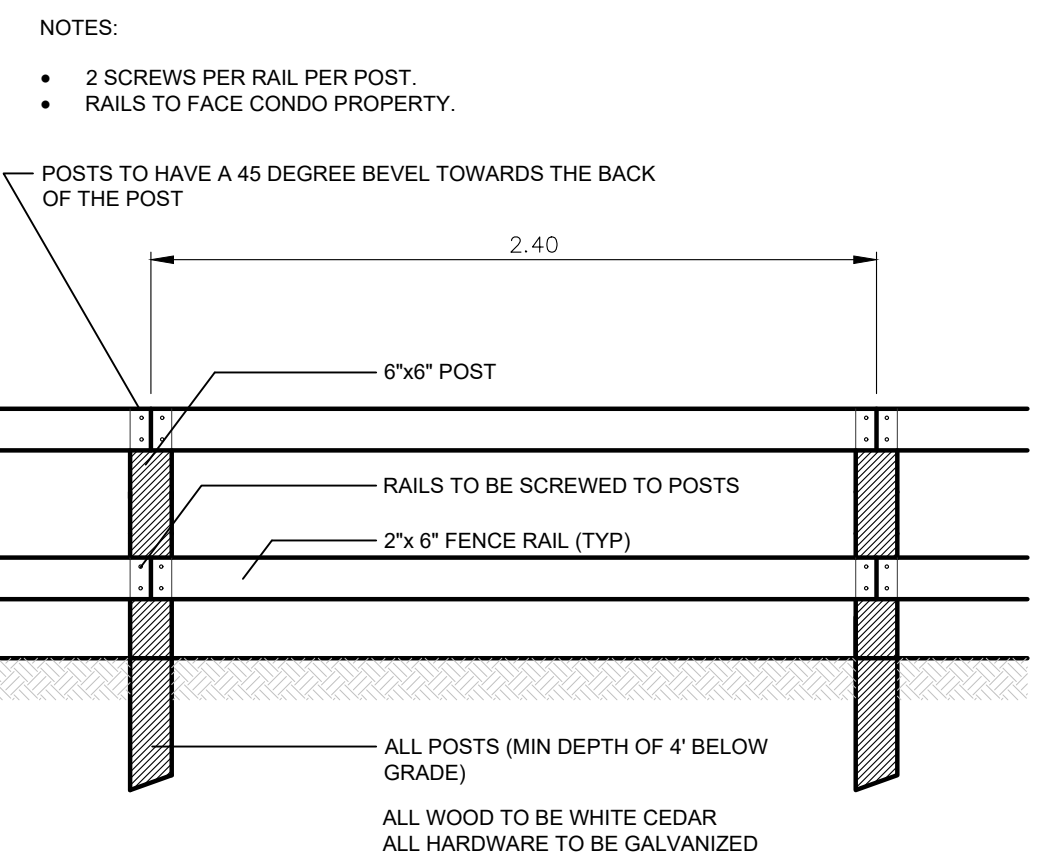
1. ALL WORKMANSHIP WILL BE TO THE STANDARDS OF LANDSCAPE ONTARIO.
2. ALL PLANT MATERIAL TO BE NO.1 CANADIAN NURSERY GROWN IN ACCORDANCE WITH THE CANADIAN STANDARDS FOR NURSERY STOCK, 9TH EDITION, 2017, BY THE CANADIAN NURSERY TRADES ASSOCIATION.
3. BACKFILL WILL CONSIST OF SOIL NATIVE TO THE SITE OR GENERAL SOIL TYPE/CLASS NATIVE TO THE SITE. TOPSOIL TO BE TESTED FOR NUTRIENT VALUE, AND AMENDED FOR OPTIMAL GROWTH AS PER THE RECOMMENDATIONS OF THE SOIL TEST.
4. CONTRACTOR SHALL MAINTAIN ALL LANDSCAPE AREAS UNTIL OWNER'S ACCEPTANCE OF PROJECT.
5. CONTRACTOR TO LOCATE ALL UNDERGROUND UTILITIES.
6. PLANTING MAY BE ADJUSTED TO SUIT LOCATIONS OF SITE UTILITY STRUCTURES/SERVICES.
7. ALL MATERIALS MUST BE APPROVED BY LANDSCAPE ARCHITECT PRIOR TO INSTALLATION.
8. SPREAD MULCH TO A MINIMUM OF 100mm COMPACTED DEPTH ON ALL TREE PITTS AND PLANTING BEDS.
9. CHECK AND VERIFY ALL DIMENSIONS AND QUANTITIES PRIOR TO COMMENCEMENT OF WORK. ANY DISCREPANCIES ARE TO BE REPORTED IN WRITING TO THE LANDSCAPE ARCHITECT. QUANTITIES NOTED WITHIN THE PLAN SUPERCEDE THOSE IN THE PLANT LIST. ANY SUBSTITUTIONS SHALL BE APPROVED BY THE LANDSCAPE ARCHITECT.
10. SOD AS MARKED WITH NURSERY SOD ON A MINIMUM OF 100mm OF CLEAN TOPSOIL. FINE GRADE AND SOD ALL BOULEVARD AREAS TO ADJACENT PROPERTIES, AS REQUIRED.
11. FINAL INSPECTION AND ACCEPTANCE OF PLANTING WORK SHALL COINCIDE WITH THE FINAL INSPECTION AND ACCEPTANCE OF ALL WORK INCLUDED IN THE CONTRACT.
12. ALL SEEDED SLOPES 3:1 AND GREATER TO RECEIVE EROSION CONTROL MATTING. PIN SOD ON ALL SLOPES OF 3:1 OR GREATER.
13. SUBMIT A WRITTEN GUARANTEE TO THE EFFECT THAT ALL PLANTS ACCEPTED DURING THE PERIOD OF JANUARY 1st TO JULY 15th SHALL BE GUARANTEED UNTIL JULY 15th THE FOLLOWING YEAR. PLANTS ACCEPTED DURING THE PERIOD OF JULY 15th TO DECEMBER 31st SHALL BE GUARANTEED FOR ONE YEAR FROM THE DATE OF ACCEPTANCE. THE GUARANTEE PERIODS LISTED ABOVE SHALL APPLY TO ALL "NURSERY GROWN" PLANTS.
14. AT THE TIME OF FINAL INSPECTION ALL PLANTS SHALL BE IN A HEALTHY, VIGOROUS GROWING CONDITION, PLANTED IN FULL ACCORDANCE WITH DRAWINGS AND CONDITIONS.
15. SITE PLAN INFORMATION AS PER ABA ARCHITECTS INC.
16. ENGINEERING AS PER MTE, AND IS PROVIDED FOR INFORMATION ONLY.
17. SITE LIGHTING BY OTHERS

BENCH BY MAGLIN (OR APPROVED EQUAL)
 T 1-800-716-5506
 F 1-877-260-9393
 WWW.MAGLIN.COM
 SALES@MAGLIN.COM

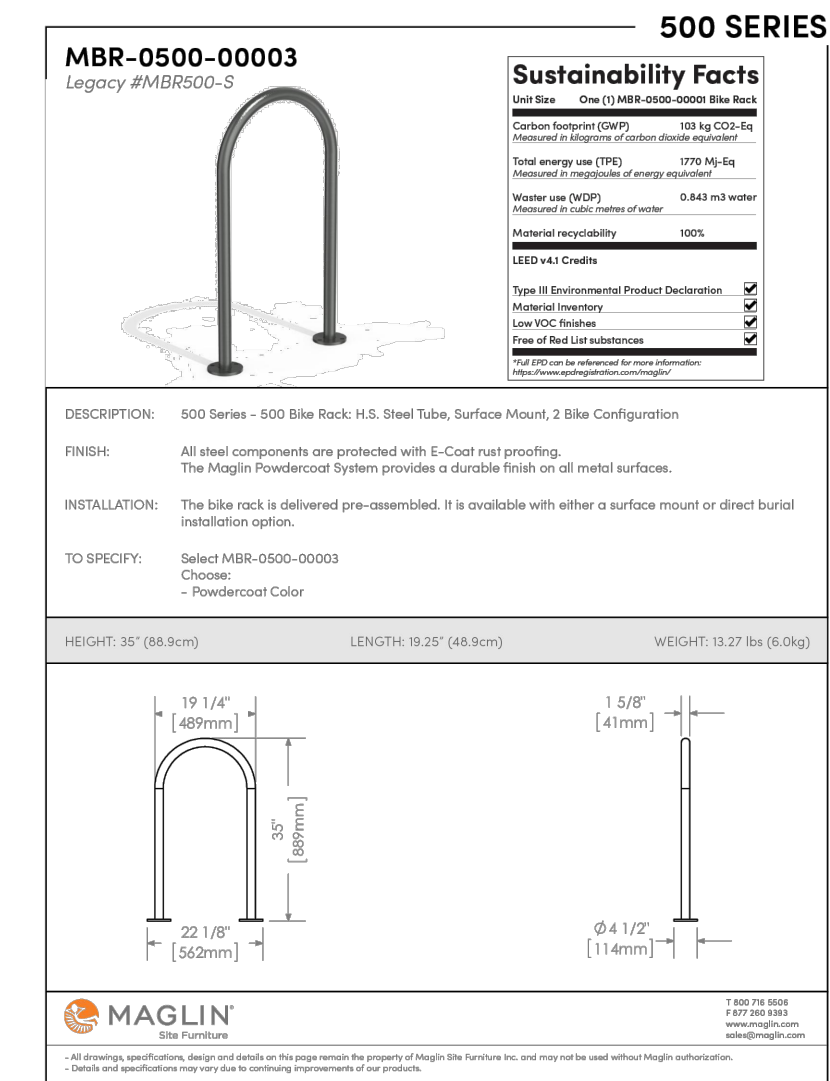
SPECIFICATIONS:
 MODEL: MBE-2300-00055
 LENGTH: 6 FEET
 MATERIAL: THERMALLY MODIFIED ASH WOOD
 POWDER COAT COLOUR: SILVER 14, FROM FINE TEXTURED COLLECTION (MATTE FINISH)
 BACKED: YES
 ARMRESTS: 2 END ARMRESTS
 INSTALLATION: SURFACE MOUNT AS PER MANUFACTURER'S SPECIFICATIONS



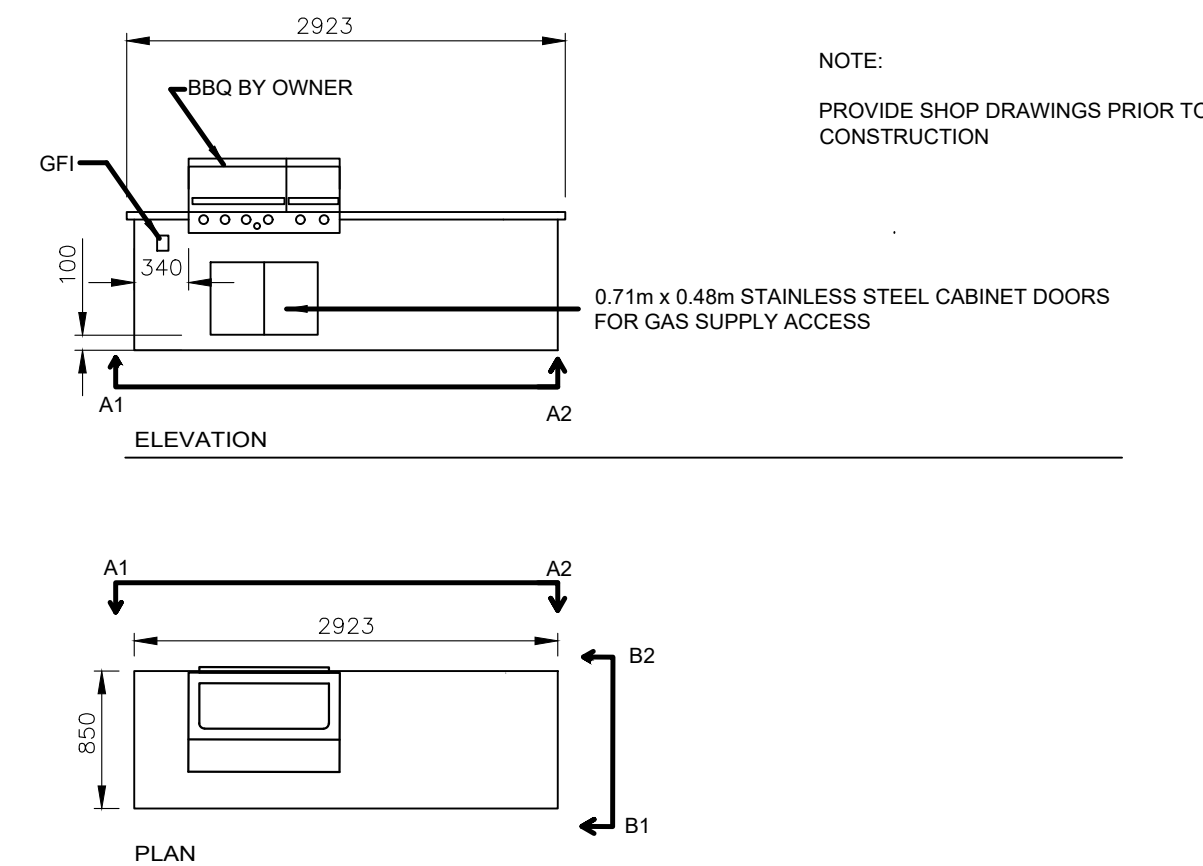
5 BACKED BENCH DETAIL NTS



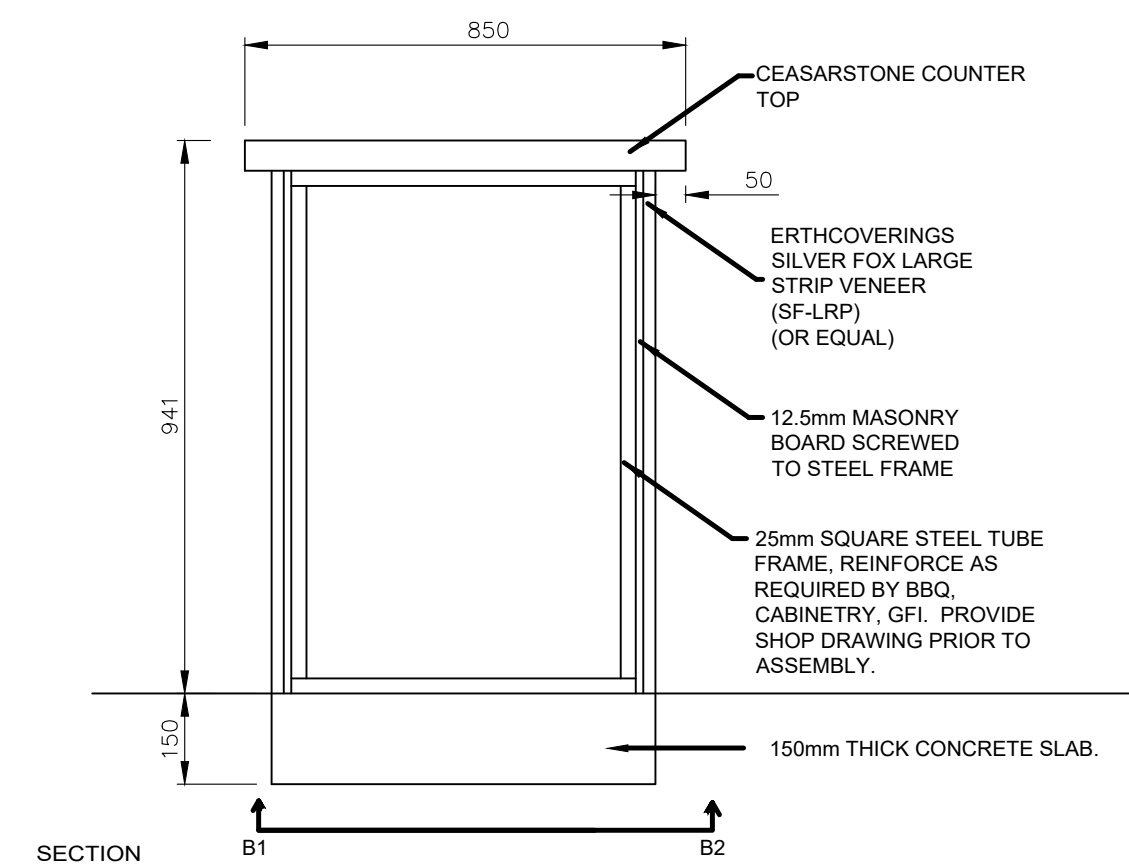
6 1.0m HIGH POST AND RAIL FENCE NTS



7 BIKE RACK DETAIL NTS



8 BBQ/PREP COOK STATION DETAILS NTS



no.	date	description	by
1.	Jul 05 2024	Issued for Approval	JC
2.	Dec 05 2024	Issued for Approval	JC

GRANITE HOMES SOUTH RIVER INC.
 YOUNGBLOOD SUBDIVISION
 Block 40
 Township of Centre Wellington
 Village of Elora
 DETAILS 1

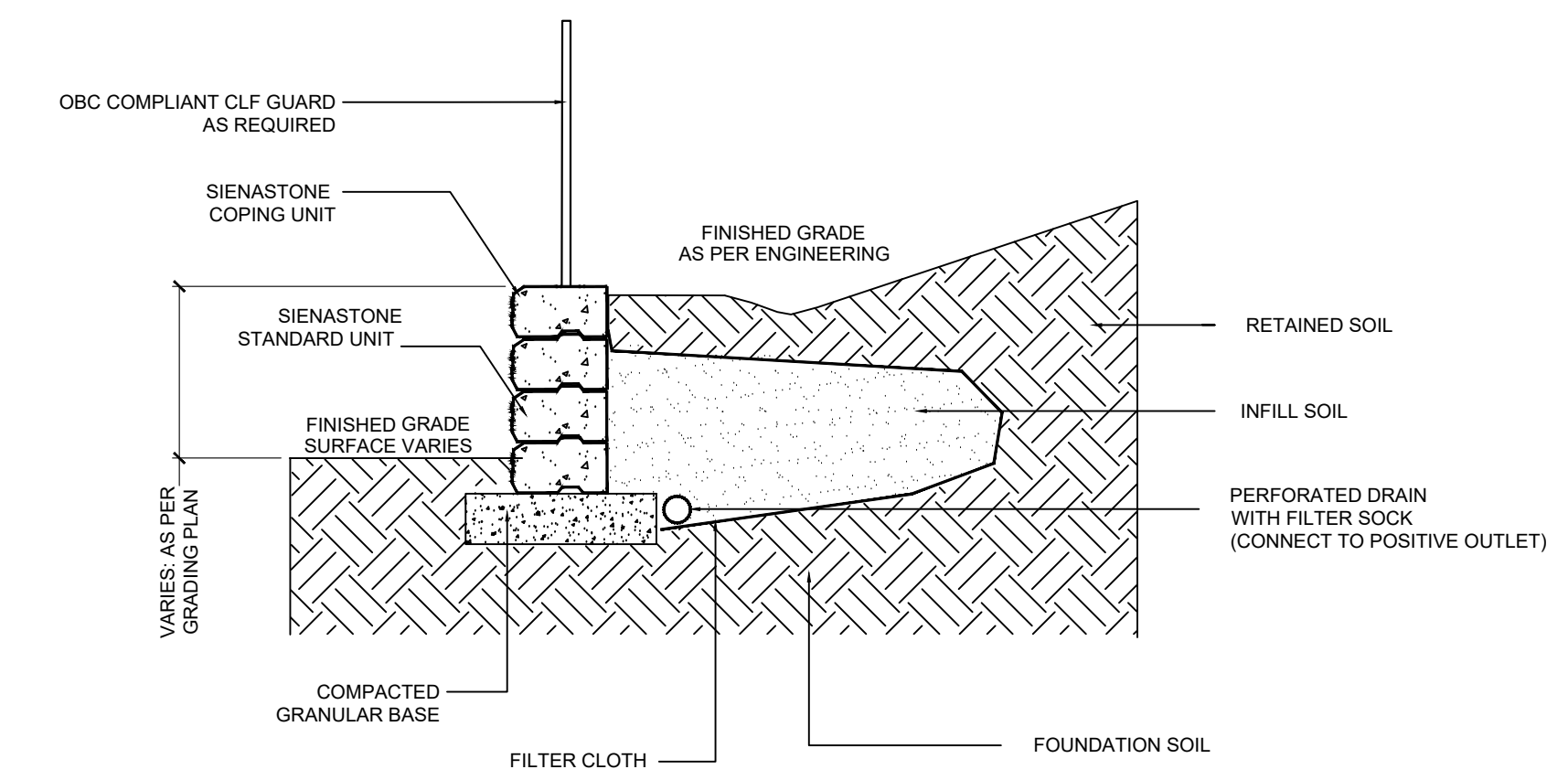


PROJECT NO.: 2024-12	DRAWN BY: JC
SCALE:	DESIGNED BY: JC
SHEET:	APPROVED BY: AWH
L4	
PLOT DATE: Dec 05, 2024	

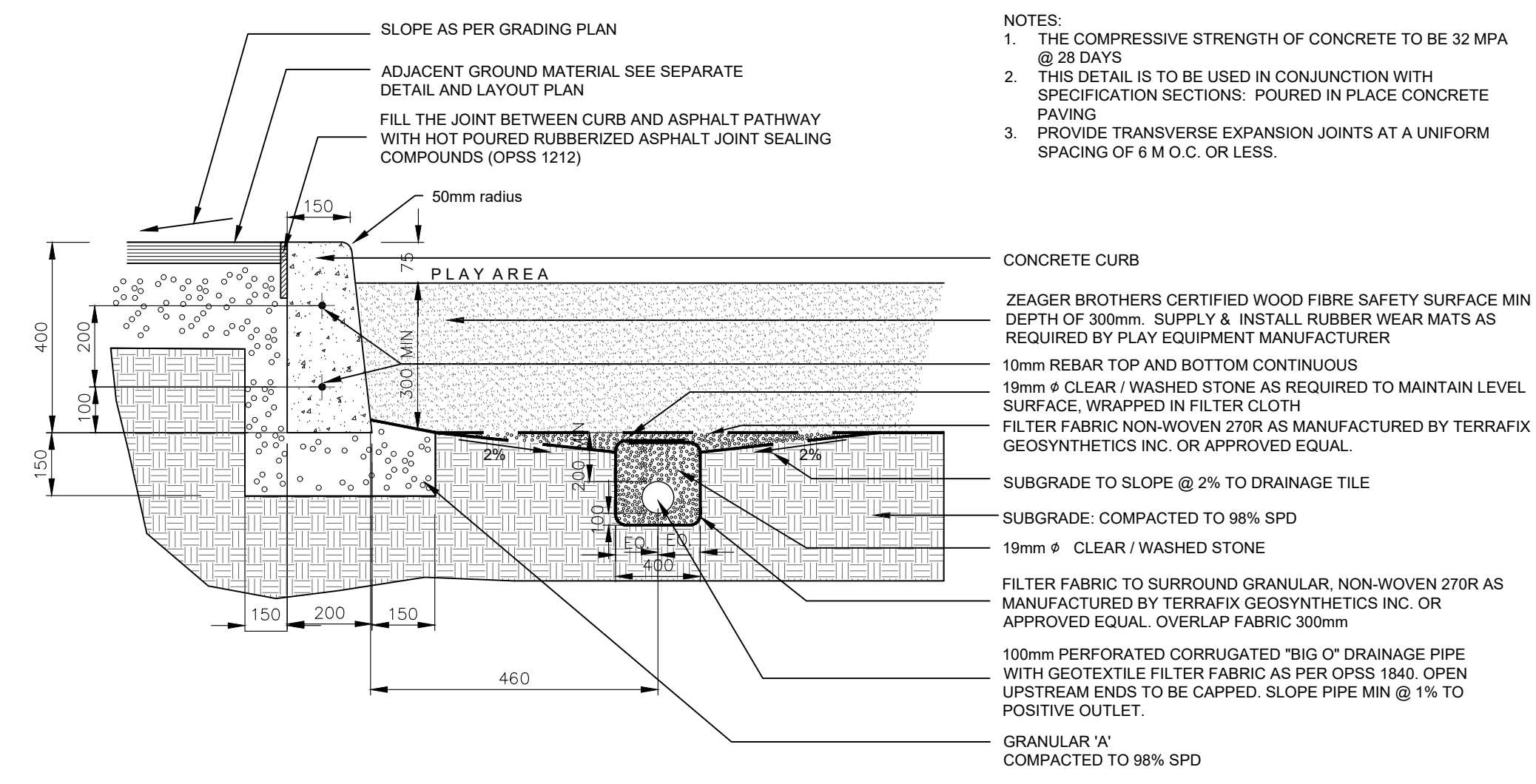
ENGINEERING OF WALL BY OTHERS

WWW.UNILOCK.COM
1-800-265-6124

- NOTES:
1. SIENASTONE 500 RETAINING WALL BY UNILOCK (OR APPROVED EQUAL)
COLOUR: NATURAL



1 TYPICAL SIENASTONE PRE-CAST RETAINING WALL DETAIL
NTS

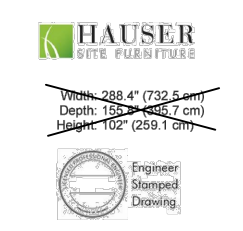


2 CONCRETE CURB PLAY EDGE WITH DRAINAGE TILE AND ENGINEERED WOOD FIBER DETAIL
NTS

TRELLIS BY HAUSER
(OR APPROVED EQUAL)
T 1-800-268-7328 ext. 243
F 1-519-747-4871
sales@hauserite.com

SPECIFICATIONS:
MODEL: TRELLIS
CUSTOM DIMENSIONS: 7316mm x 5486mm x 2743mm
POWDER COAT: TEXTURED STONE, LOW SHEEN SANDEXT
PURLINS: CEDAR, SQUARE ENDS
INSTALLATION: INSTALL AS PER MANUFACTURER'S SPECIFICATIONS

Trellis, 13' X 24' X 6.5' H
S107-IC-A24H-13x24-6.5

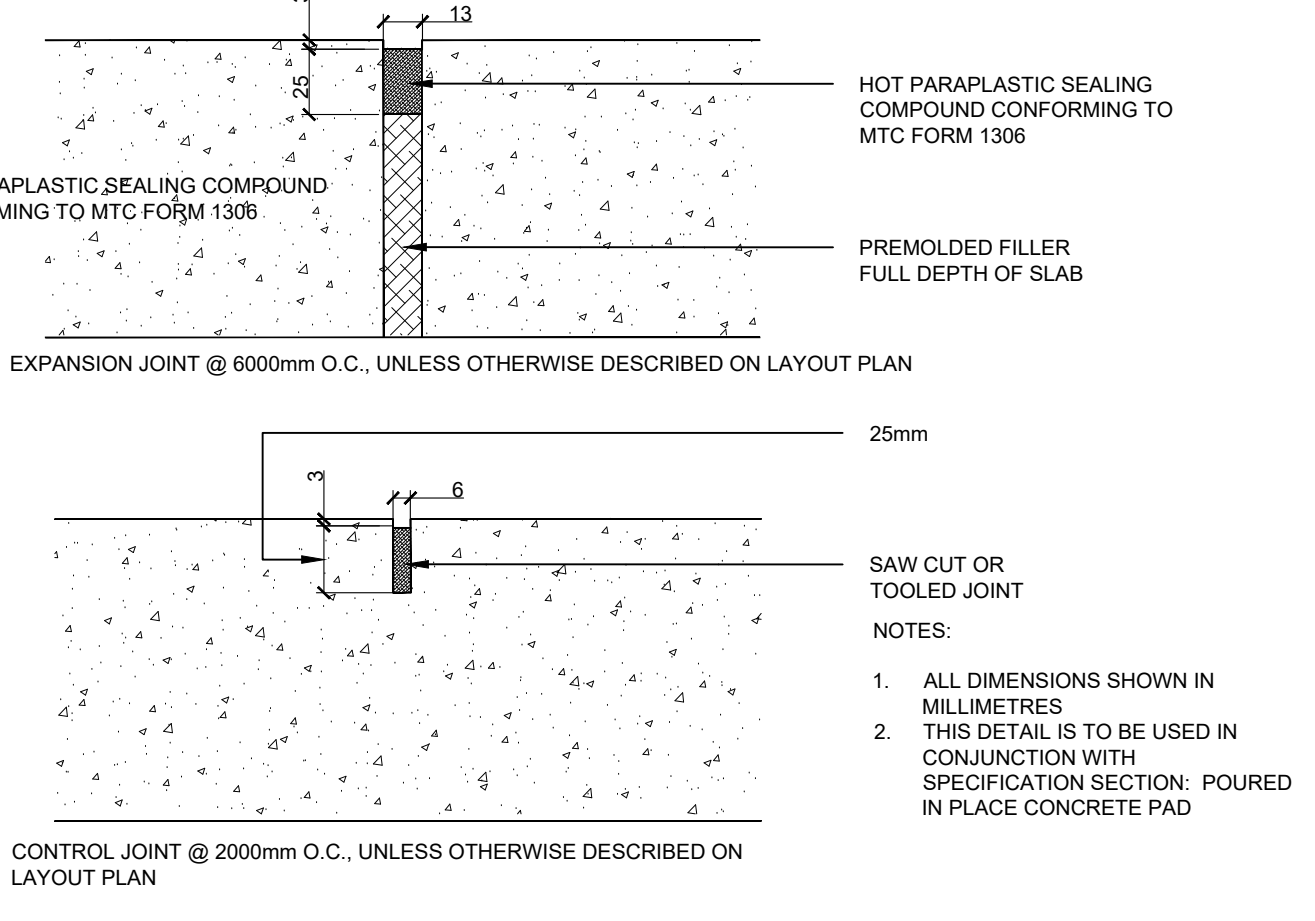


Our Trellis has been professionally engineered and features a heavy duty aluminum construction. It's made with built-in surface mount plates and is shown here with 2" x 4" over-lapping, horizontally oriented aluminum slats. The Trellis incorporates our proprietary Koverest System to ensure that each design is as full as possible, while still meeting the required load and wind analysis. The Koverest System consists of custom engineered Koverest Blocks, ensuring that each beam and column connection is seamless, strong, and structurally sound. Slatted steel, cover caps hardware should be installed inside the slatted system to ensure the connection. The Trellis has been designed to accept a variety of lighting and heat options. Custom sizes are available.

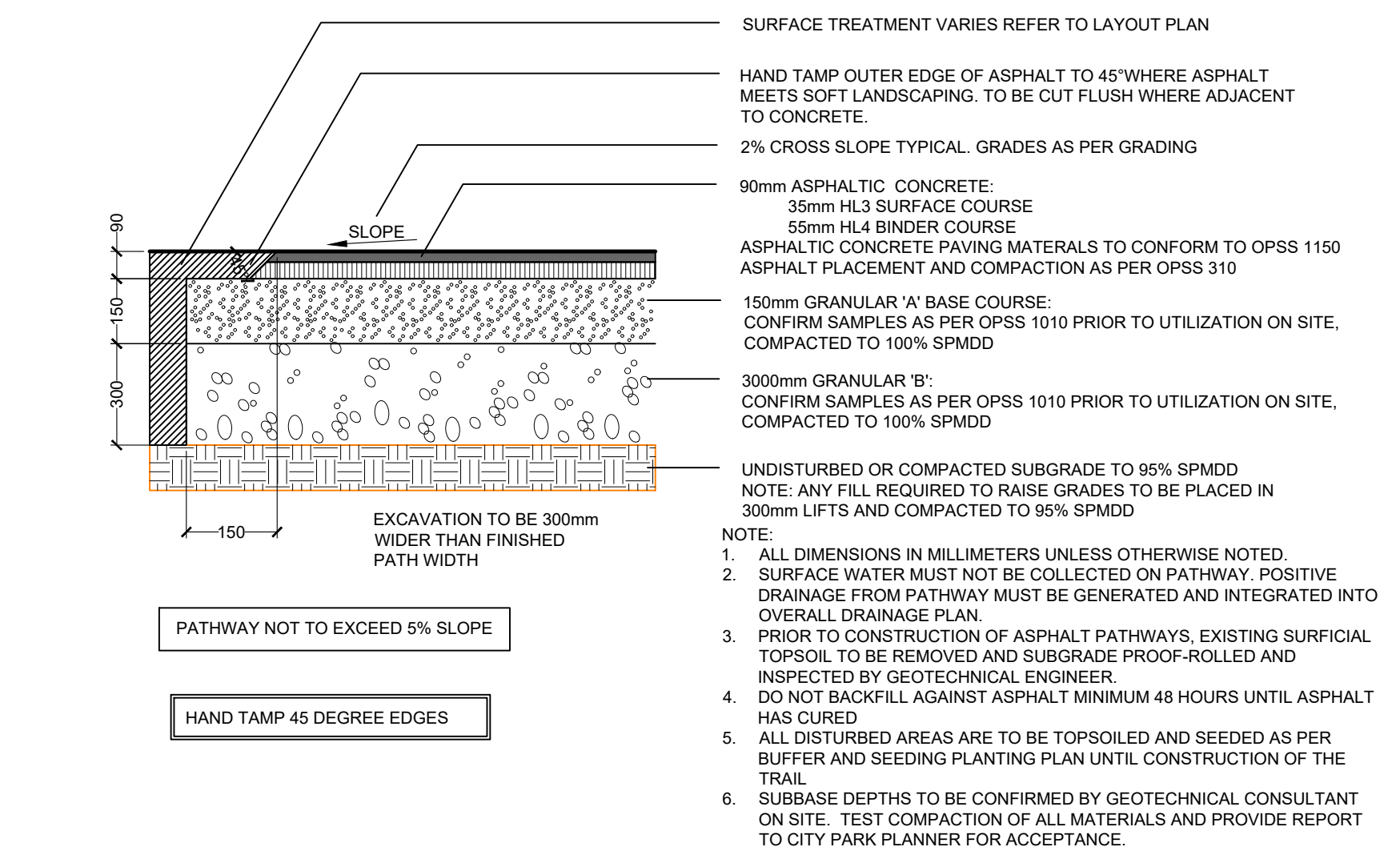


sales@hauserite.com | 1-800-268-7328 | hauserite.com

5 SHADE STRUCTURE
NTS



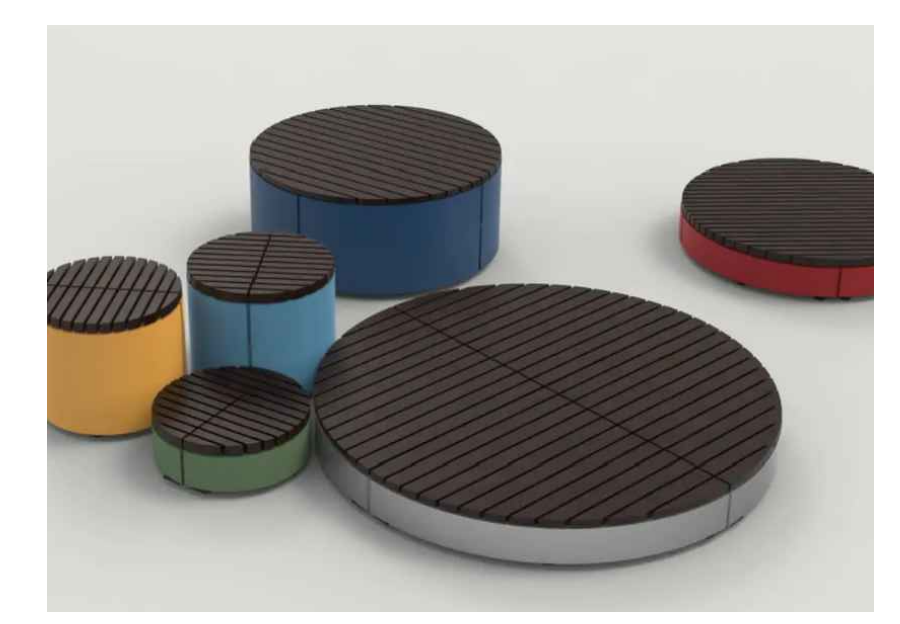
8 CONTROL CONCRETE JOINT DETAIL
NTS



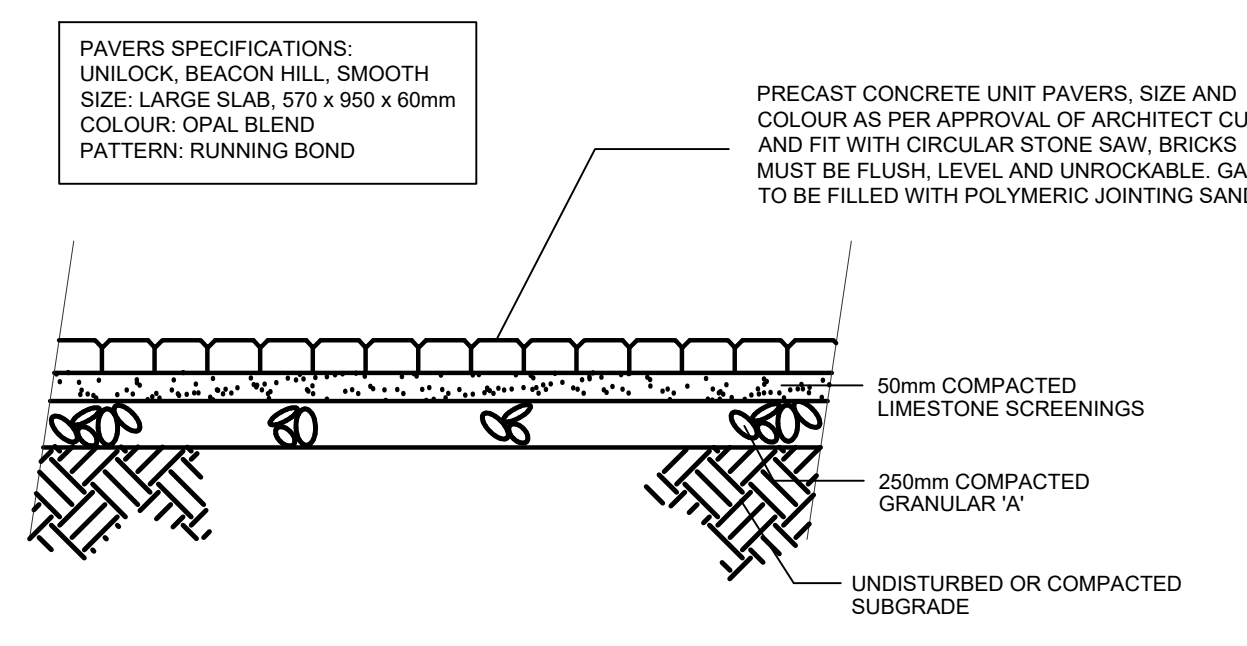
3 ASPHALT SURFACING DETAIL
NTS

BENCH BY MAGLIN
(OR APPROVED EQUAL)
T 1-800-716-5506
F 1-877-280-9283
WWW.MAGLIN.COM
SALES@MAGLIN.COM

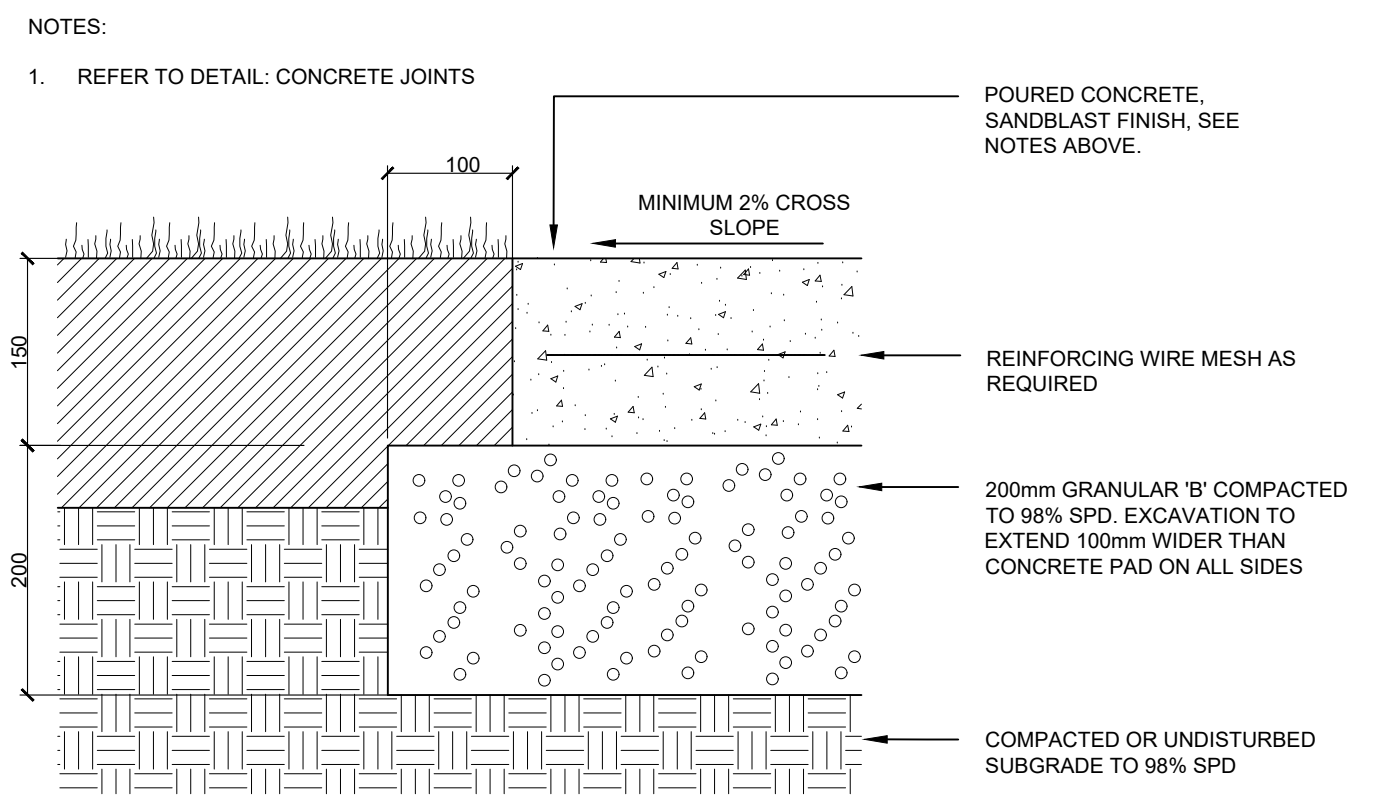
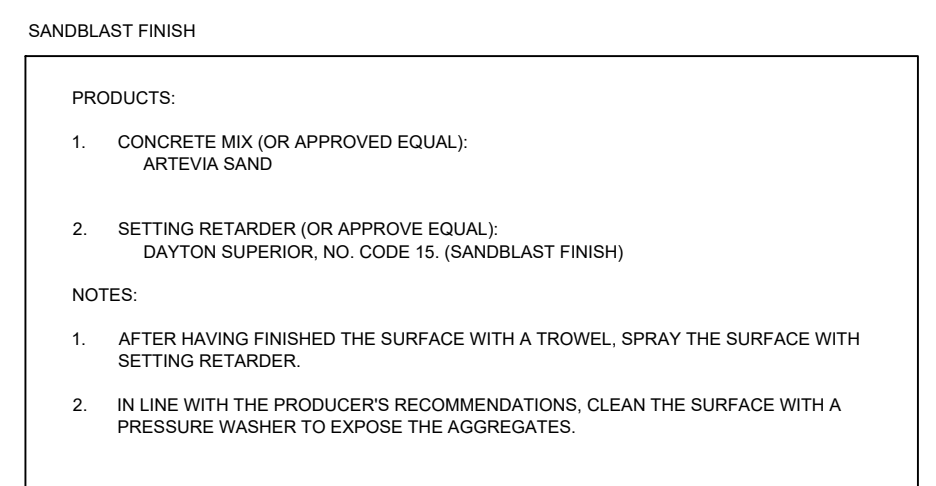
SPECIFICATIONS:
MODEL: PIXEL ROUND
SIZES: MULTIPLE: 0.3m, 0.6m, 0.9m (RADIUS)
MOUNT: SURFACE MOUNT
MATERIAL: THERMALLY MODIFIED ASH WOOD
POWDER COAT COLOURS: VARIED, TO BE SPECIFIED



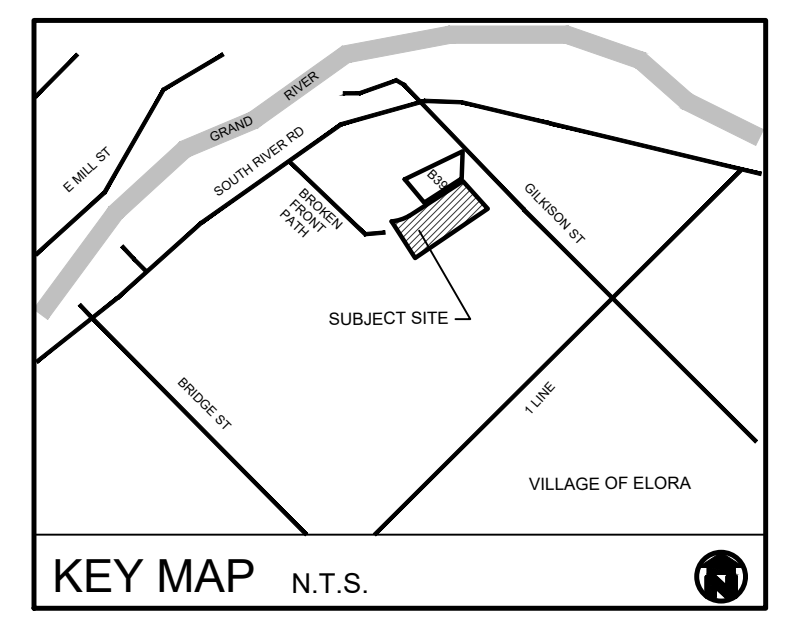
6 MAGLIN PIXEL BENCH
NTS



4 PRECAST UNIT PAVER DETAIL
N.T.S.



7 PIP SANDBLASTED FINISH CONCRETE PAD DETAIL
NTS



GENERAL NOTES

1. ALL WORKMANSHIP WILL BE TO THE STANDARDS OF LANDSCAPE ONTARIO.
2. ALL PLANT MATERIAL TO BE NO. 1 GRADE NURSERY GROWN IN ACCORDANCE WITH THE CANADIAN STANDARDS FOR NURSERY STOCK, 9TH EDITION, 2017, BY THE CANADIAN NURSERY TRADES ASSOCIATION.
3. BACKFILL WILL CONSIST OF SOIL NATIVE TO THE SITE OR GENERAL SOIL TYPE/CLASS NATIVE TO THE SITE. TOPSOIL TO BE TESTED FOR NUTRIENT VALUE, AND AMENDED FOR OPTIMAL GROWTH AS PER THE RECOMMENDATIONS OF THE SOIL TEST.
4. CONTRACTOR SHALL MAINTAIN ALL LANDSCAPE AREAS UNTIL OWNER'S ACCEPTANCE OF PROJECT.
5. CONTRACTOR TO LOCATE ALL UNDERGROUND UTILITIES.
6. PLANTING MAY BE ADJUSTED TO SUIT LOCATIONS OF SITE UTILITY STRUCTURES/SERVICES.
7. ALL MATERIALS MUST BE APPROVED BY LANDSCAPE ARCHITECT PRIOR TO INSTALLATION.
8. SPREAD MULCH TO A MINIMUM OF 100mm COMPACTED DEPTH ON ALL TREE PITS AND PLANTING BEDS.
9. CHECK AND VERIFY ALL DIMENSIONS AND QUANTITIES PRIOR TO COMMENCEMENT OF WORK. ANY DISCREPANCIES ARE TO BE REPORTED IN WRITING TO THE LANDSCAPE ARCHITECT. QUANTITIES NOTED WITHIN THE PLAN SUPERCEDE THOSE IN THE PLANT LIST. ANY SUBSTITUTIONS SHALL BE APPROVED BY THE LANDSCAPE ARCHITECT.
10. SOD AS MARKED WITH NURSERY SOD ON A MINIMUM OF 100mm OF CLEAN TOPSOIL. FINE GRADE AND SOD ALL BOULEVARD AREAS TO MUNICIPAL SPECIFICATIONS AND REPAIR DAMAGE TO ADJACENT PROPERTIES, AS REQUIRED.
11. FINAL INSPECTION AND ACCEPTANCE OF PLANTING WORK SHALL COINCIDE WITH THE FINAL INSPECTION AND ACCEPTANCE OF ALL WORK INCLUDED IN THE CONTRACT.
12. ALL SEEDED SLOPES 3:1 AND GREATER TO RECEIVE EROSION CONTROL MATTING. PIN SOD ON ALL SLOPES OF 3:1 OR GREATER.
13. SUBMIT A WRITTEN GUARANTEE TO THE EFFECT THAT ALL PLANTS ACCEPTED DURING THE PERIOD OF JANUARY 1st TO JULY 15th SHALL BE GUARANTEED UNTIL JULY 15th THE FOLLOWING YEAR. PLANTS ACCEPTED DURING THE PERIOD OF JULY 15th TO DECEMBER 31st SHALL BE GUARANTEED FOR ONE YEAR FROM THE DATE OF ACCEPTANCE. THE GUARANTEE PERIODS LISTED ABOVE SHALL APPLY TO ALL "NURSERY GROWN" PLANTS.
14. AT THE TIME OF FINAL INSPECTION ALL PLANTS SHALL BE IN A HEALTHY, VIGOROUS GROWING CONDITION, PLANTED IN FULL ACCORDANCE WITH DRAWINGS AND CONDITIONS.
15. SITE PLAN INFORMATION AS PER ABA ARCHITECTS INC.
16. ENGINEERING AS PER MTE, AND IS PROVIDED FOR INFORMATION ONLY.
17. SITE LIGHTING BY OTHERS

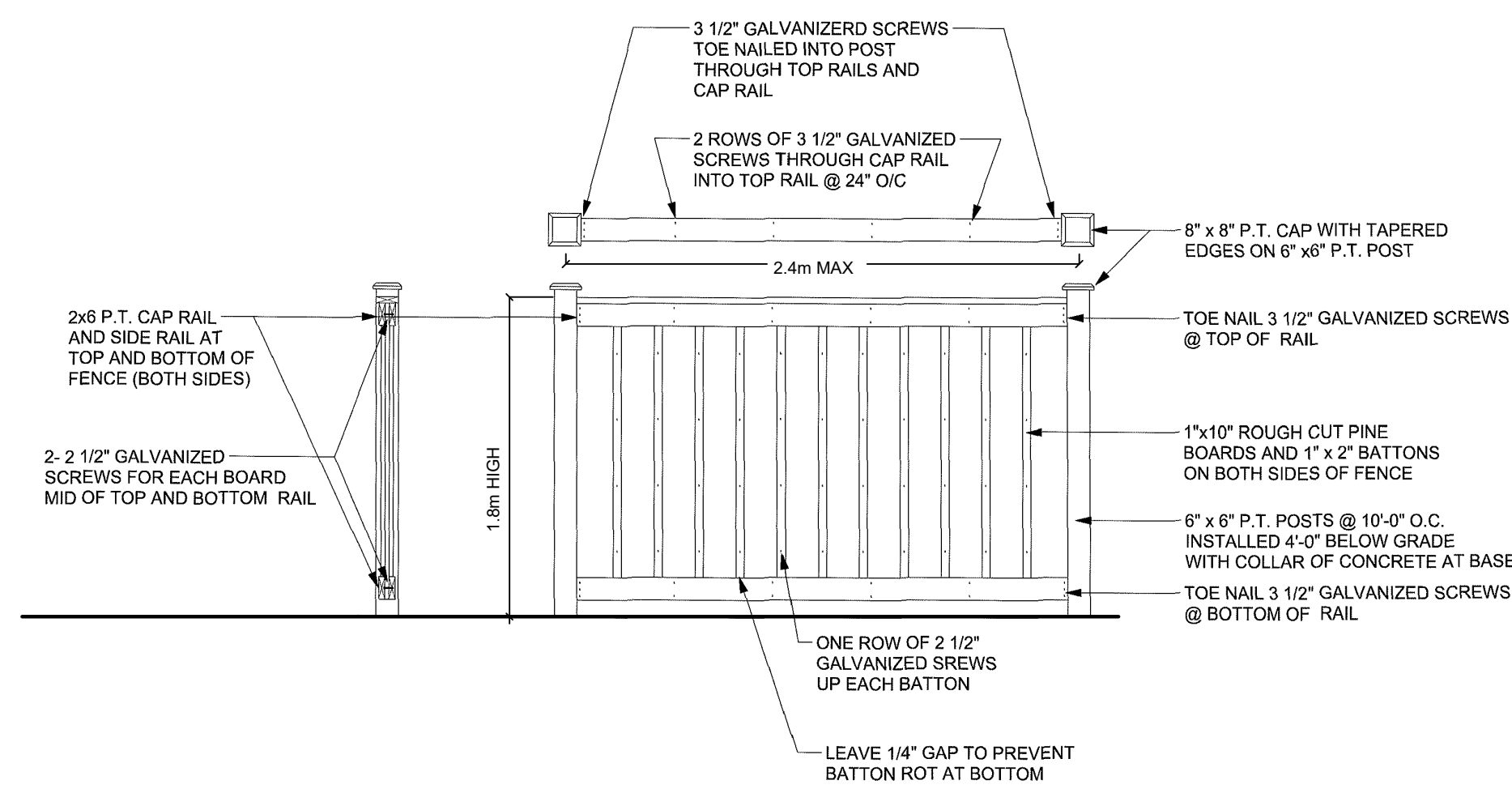


no.	date	description	by
1.	Jul 05 2024	Issued for Approval	JC
2.	Dec 05 2024	Issued for Approval	JC

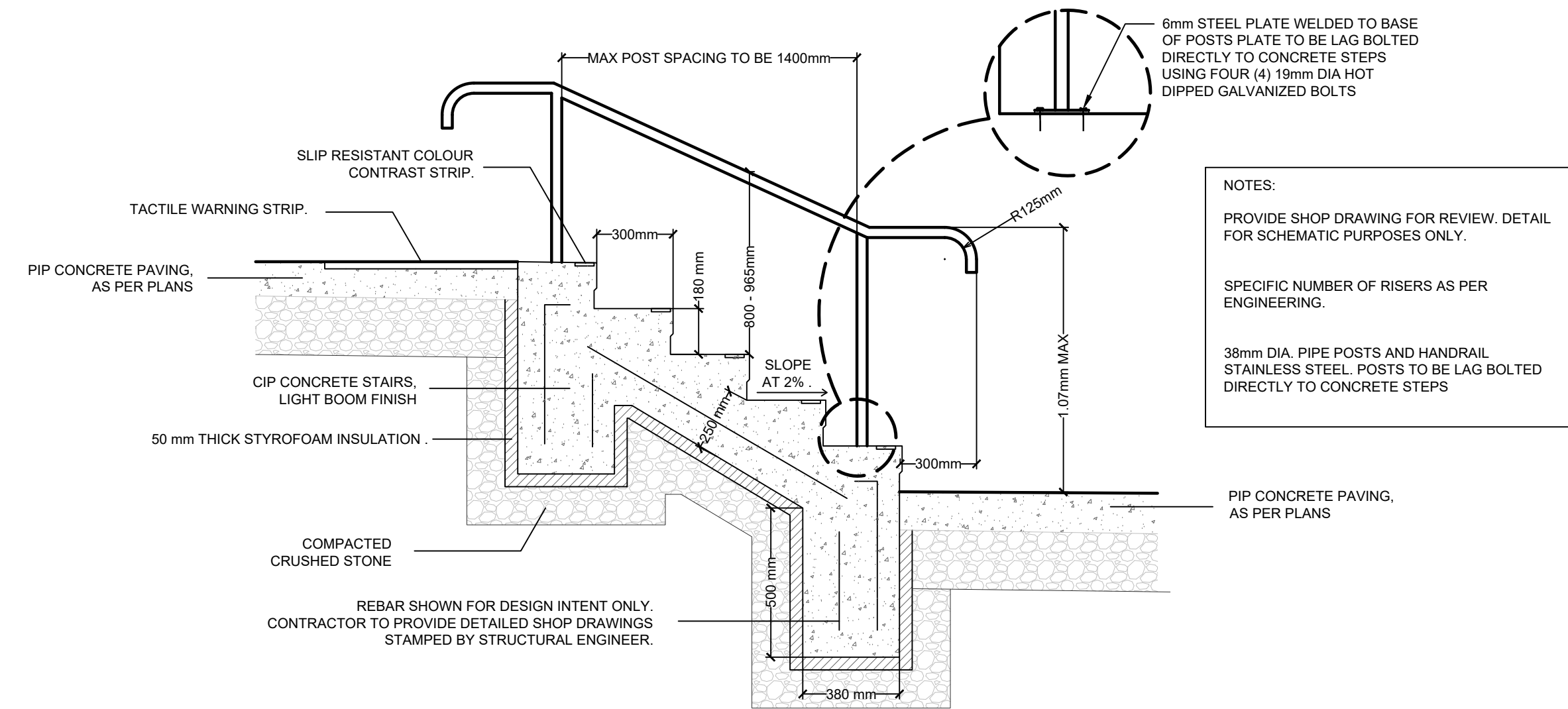
GRANITE HOMES SOUTH RIVER INC.
YOUNGBLOOD SUBDIVISION
Block 40
Township of Centre Wellington
Village of Elora
DETAILS 2



PROJECT NO.: 2024-12 DRAWN BY: JC
SCALE: DESIGNED BY: JC
SHEET: APPROVED BY: AWH
L5 PLOT DATE: Dec 05, 2024



1 1.8m HIGH WOOD BOARD FENCE DETAIL
N.T.S.



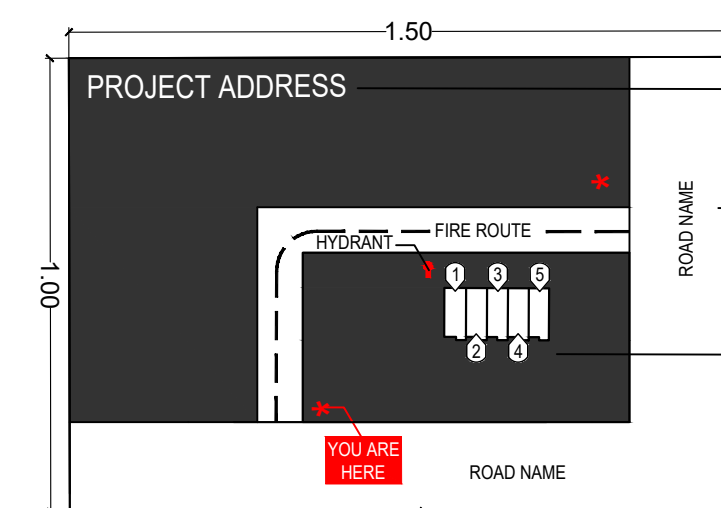
2 SCHEMATIC RAILING AND STEPS DETAIL
N.T.S.

NOTE:
DRY STACKED STONE FEATURE WALL, APPROXIMATELY 0.5m WIDE AND APPROXIMATELY 1.0m HIGH AS ILLUSTRATED BELOW. EXACT DETAILING SUBJECT TO STONE AVAILABILITY.



3 DRY STACKED STONE FEATURE WALL DETAIL
N.T.S.

NOTES:
1. DETAIL IS FOR SCHEMATIC PURPOSES ONLY. SIGN LAYOUT IS GENERALIZED, NOT REFLECTIVE OF ACTUAL SITE LAYOUT. SPECIFIC SIGN DESIGN TO BE COMPLETED AT FUTURE DATE.
2. UNITS OF ALL DIMENSIONS ARE IN METERS



ADDRESS TEXT TO BE 50mm HIGH REFLECTIVE LETTERING
STREET NAMES AND REMAINING TEXT ON SIGN TO BE 30mm HIGH REFLECTIVE LETTERING
UNIT NUMBER TEXT TO BE 30mm HIGH REFLECTIVE LETTERING

COLOUR SCHEME
BACKGROUND DARK GREY
YOU ARE HERE, HYDRANT RED
PAVED AREAS, BUILDINGS WHITE
LETTERING, LINEWORK BLACK
ADDRESS WHITE

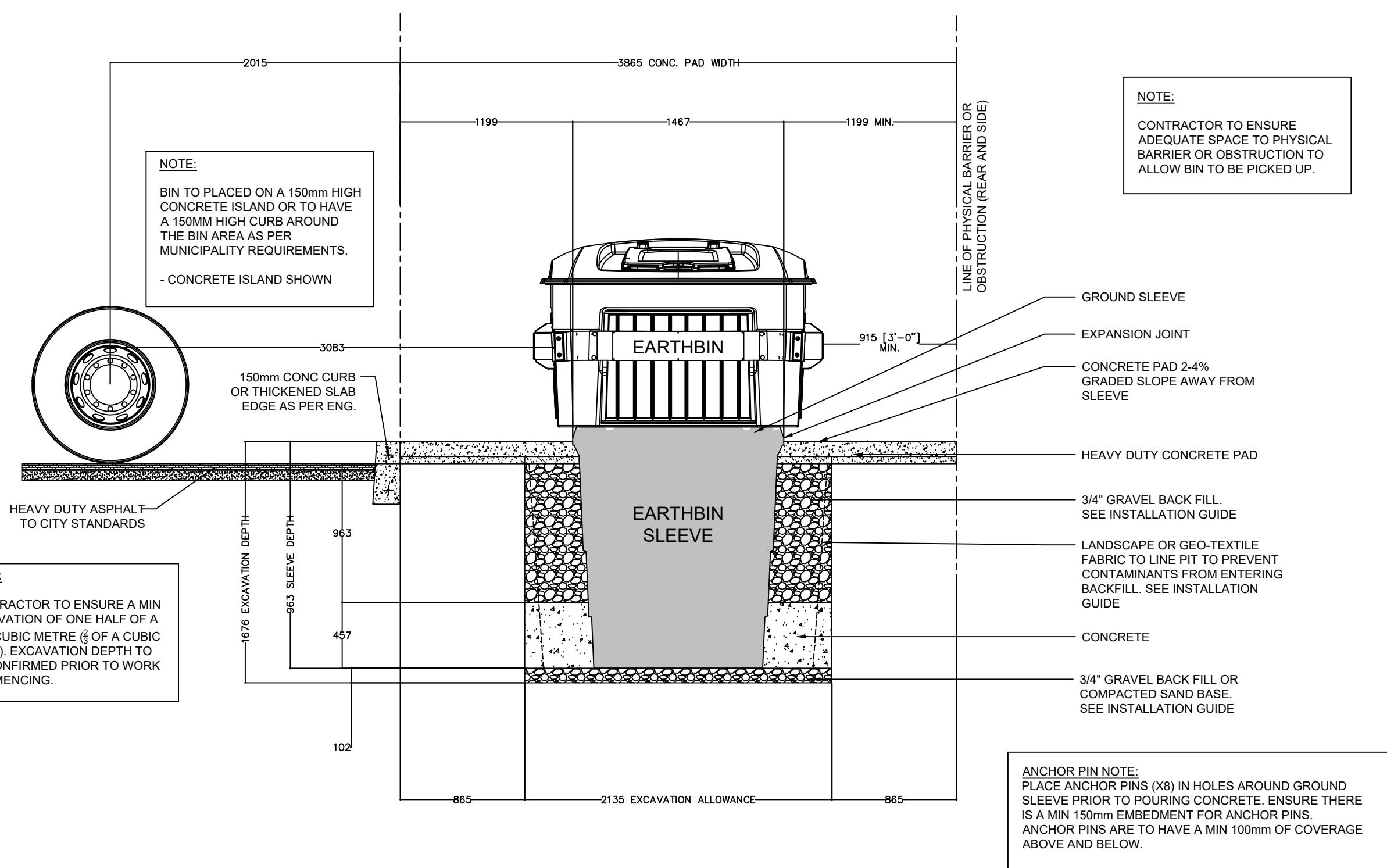
SIGN TO BE MOUNTED TO 150x150mm PRESSURE TREATED POSTS SET IN CONCRETE 1.2m BELOW GRADE. AFFIX SIGN TO POSTS WITH 3/8" STAINLESS STEEL LAG BOLTS

5 GENERAL MUI SIGN
N.T.S.

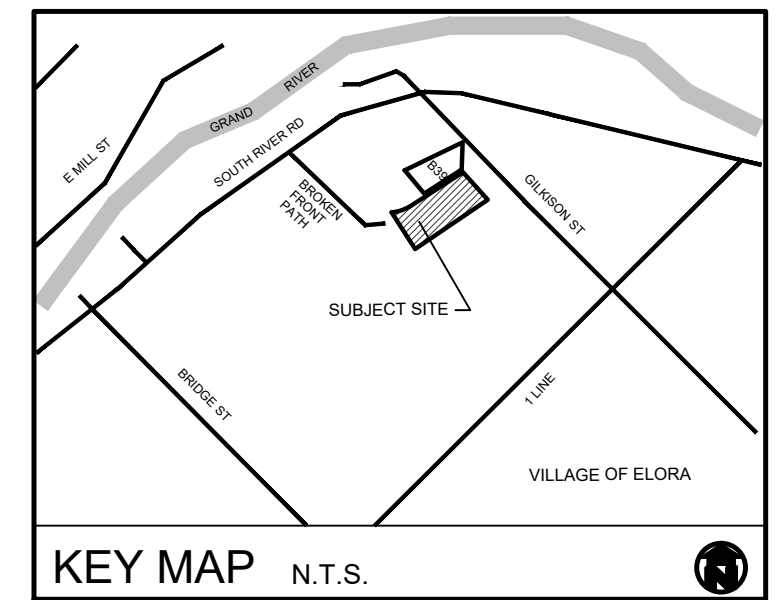


TWSI BY SAFETY STEP (OR APPROVED EQUAL)
HTTPS://SAFETYSTEPCANADA.CA/
INFO@SAFETYSTEPCANADA.CA
PRODUCT NAME: TACTILE INDICATORS
MATERIAL: FIBERGLASS POLYMER COMPOSITE
COLOUR: YELLOW
TYPE: CAST IN PLACE
DIMENSIONS: VARIES, AS PER PLANS
INSTALLATION: AS PER MANUFACTURER'S SPECIFICATIONS

6 TWSI SPEC
N.T.S.

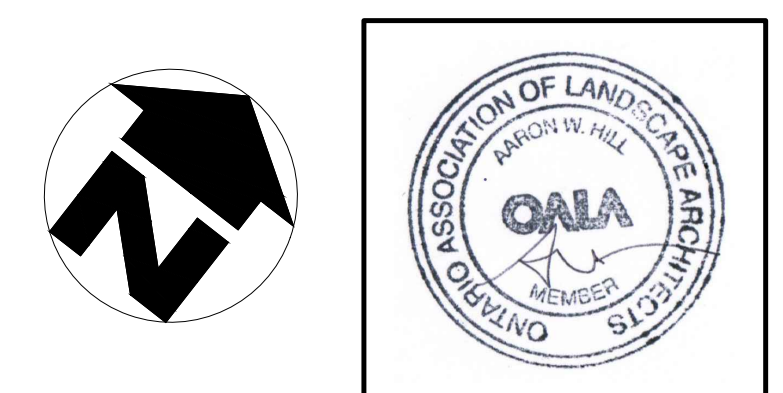


4 EARTH BIN - TYPICAL CROSS SECTION DETAIL
N.T.S.



GENERAL NOTES

1. ALL WORKMANSHIP WILL BE TO THE STANDARDS OF LANDSCAPE ONTARIO.
2. ALL PLANT MATERIAL TO BE NO.1 GRADE NURSERY GROWN IN ACCORDANCE WITH THE CANADIAN STANDARDS FOR NURSERY STOCK, 9TH EDITION, 2017, BY THE CANADIAN NURSERY TRADES ASSOCIATION.
3. BACKFILL WILL CONSIST OF SOIL NATIVE TO THE SITE OR GENERAL SOIL TYPE/CLASS NATIVE TO THE SITE. TOPSOIL TO BE TESTED FOR NUTRIENT VALUE, AND AMENDED FOR OPTIMAL GROWTH AS PER THE RECOMMENDATIONS OF THE SOIL TEST.
4. CONTRACTOR SHALL MAINTAIN ALL LANDSCAPE AREAS UNTIL OWNER'S ACCEPTANCE OF PROJECT.
5. CONTRACTOR TO LOCATE ALL UNDERGROUND UTILITIES.
6. PLANTING MAY BE ADJUSTED TO SUIT LOCATIONS OF SITE UTILITY STRUCTURES/SERVICES.
7. ALL MATERIALS MUST BE APPROVED BY LANDSCAPE ARCHITECT PRIOR TO INSTALLATION.
8. SPREAD MULCH TO A MINIMUM OF 100mm COMPACTED DEPTH ON ALL TREE PITS AND PLANTING BEDS.
9. CHECK AND VERIFY ALL DIMENSIONS AND QUANTITIES PRIOR TO COMMENCEMENT OF WORK. ANY DISCREPANCIES ARE TO BE REPORTED IN WRITING TO THE LANDSCAPE ARCHITECT. QUANTITIES NOTED WITHIN THE PLAN SUPERCEDE THOSE IN THE PLANT LIST. ANY SUBSTITUTIONS SHALL BE APPROVED BY THE LANDSCAPE ARCHITECT.
10. SOD AS MARKED WITH NURSERY SOD ON A MINIMUM OF 100mm OF CLEAN TOPSOIL. FINE GRADE AND SOD ALL BOULEVARD AREAS TO MUNICIPAL SPECIFICATIONS AND REPAIR DAMAGE TO ADJACENT PROPERTIES, AS REQUIRED.
11. FINAL INSPECTION AND ACCEPTANCE OF PLANTING WORK SHALL COINCIDE WITH THE FINAL INSPECTION AND ACCEPTANCE OF ALL WORK INCLUDED IN THE CONTRACT.
12. ALL SEEDED SLOPES 3:1 AND GREATER TO RECEIVE EROSION CONTROL MATTING. PIN SOD ON ALL SLOPES OF 3:1 OR GREATER.
13. SUBMIT A WRITTEN GUARANTEE TO THE EFFECT THAT ALL PLANTS ACCEPTED DURING THE PERIOD OF JANUARY 1st TO JULY 15th SHALL BE GUARANTEED UNTIL JULY 15th THE FOLLOWING YEAR. PLANTS ACCEPTED DURING THE PERIOD OF JULY 15th TO DECEMBER 31st SHALL BE GUARANTEED FOR ONE YEAR FROM THE DATE OF ACCEPTANCE. THE GUARANTEE PERIODS LISTED ABOVE SHALL APPLY TO ALL "NURSERY GROWN" PLANTS.
14. AT THE TIME OF FINAL INSPECTION ALL PLANTS SHALL BE IN A HEALTHY, VIGOROUS GROWING CONDITION, PLANTED IN FULL ACCORDANCE WITH DRAWINGS AND CONDITIONS.
15. SITE PLAN INFORMATION AS PER ABA ARCHITECTS INC.
16. ENGINEERING AS PER MTE, AND IS PROVIDED FOR INFORMATION ONLY.
17. SITE LIGHTING BY OTHERS



REVISIONS	no.	date	description	by
1.	Jul 05 2024	Issued for Approval	JC	JC
2.	Dec 05 2024	Issued for Approval	JC	JC

GRANITE HOMES SOUTH RIVER INC.
YOUNGBLOOD SUBDIVISION
Block 40
Township of Centre Wellington
Village of Elora
DETAILS 3



PROJECT NO.: 2024-12	DRAWN BY: JC
SCALE:	DESIGNED BY: JC
SHEET:	APPROVED BY: AWH
L6	PLOT DATE: Dec 05, 2024