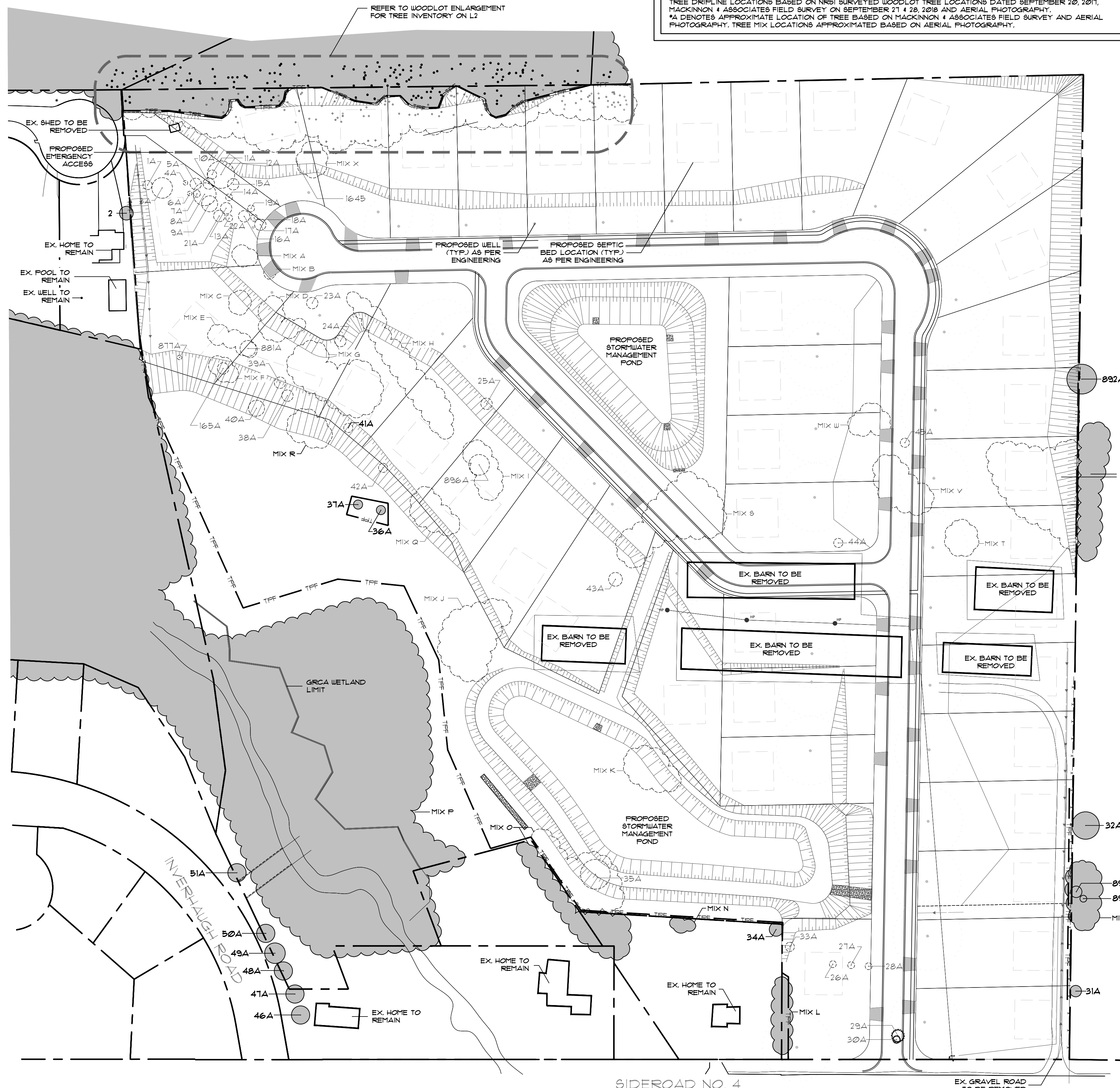


NOTE:
 SITE VISIT DATE: SEPTEMBER 21 & 28, 2018
 TREE INVENTORY COMPLETED BY ISA CERTIFIED ARBORIST CATHERINE HODGINS MN-2258A
 TREE DRIFTLINE LOCATIONS BASED ON NRSI SURVEYED WOODLOT TREE LOCATIONS DATED SEPTEMBER 20, 2017,
 MACKINNON & ASSOCIATES FIELD SURVEY ON SEPTEMBER 21 & 28, 2018 AND AERIAL PHOTOGRAPHY
 *A DENOTES APPROXIMATE LOCATION OF TREE BASED ON MACKINNON & ASSOCIATES FIELD SURVEY AND AERIAL
 PHOTOGRAPHY. TREE MIX LOCATIONS APPROXIMATED BASED ON AERIAL PHOTOGRAPHY.

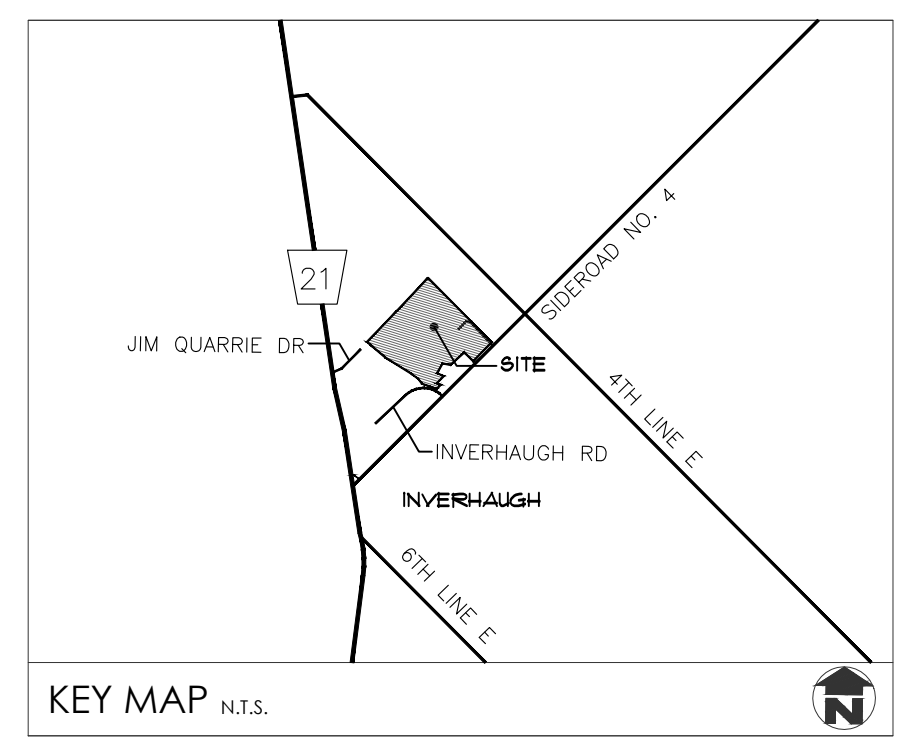


TREE MIX INVENTORY LIST

MIX	SPECIES	D.B.H.	CONDITION	STATUS	ADDITIONAL NOTES
A	CRATAEGUS SP. AND RHAMNUS CATHARTICA	20cm-30cm	FAIR-DEAD	TO BE REMOVED	
B	CRATAEGUS SP. AND RHAMNUS CATHARTICA	20cm-30cm	FAIR-DEAD	TO BE REMOVED	VINE CHOKED
C	CRATAEGUS SP. AND RHAMNUS CATHARTICA	20cm-30cm	FAIR-DEAD	TO BE REMOVED	
D	CRATAEGUS SP. AND RHAMNUS CATHARTICA	20cm-30cm	FAIR-DEAD	TO BE REMOVED	
E	CRATAEGUS SP., RHAMNUS CATHARTICA AND FRAXINUS SP.	10cm-25cm	FAIR-DEAD	TO BE REMOVED	
F	THUJA OCCIDENTALIS, CELTIS OCCIDENTALIS AND RHAMNUS CATHARTICA	10cm-20cm	GOOD-POOR	TO BE REMOVED	AT EDGE OF SLOPE AND DOWN SLOPE
G	CRATAEGUS SP. AND RHAMNUS CATHARTICA	10cm-25cm	FAIR-DEAD	TO BE REMOVED	
H	CRATAEGUS SP. AND RHAMNUS CATHARTICA	10cm-30cm	FAIR-DEAD	TO BE REMOVED	
I	CRATAEGUS SP., LONICERA SP., FRAXINUS SP. AND RHAMNUS CATHARTICA	10cm-45cm	GOOD-DEAD	TO BE REMOVED	
J	THUJA OCCIDENTALIS, FRAXINUS SP., PINUS SYLVESTRIS AND RHAMNUS CATHARTICA	10cm-45cm	GOOD-DEAD	TO BE REMOVED	
K	ULMUS FUMIDA AND RHAMNUS CATHARTICA	10cm-50cm	GOOD-FAIR	TO BE PRESERVED	
L	PICEA FUNGENS	20cm-25cm	GOOD	TO BE PRESERVED	BOUNDARY TREES
M	CRATAEGUS SP., CELTIS OCCIDENTALIS, RHAMNUS CATHARTICA AND FRAXINUS SP.	10cm-35cm	FAIR-DEAD	TO BE PRESERVED	
N	THUJA OCCIDENTALIS AND PICEA FUNGENS	20cm	GOOD	TO BE PRESERVED	ON ADJACENT PROPERTY
O	CELTIS OCCIDENTALIS, RHUS TYPHINA, THUJA OCCIDENTALIS, FRAXINUS SP. AND RHAMNUS CATHARTICA	10cm-25cm	GOOD-FAIR	TO BE REMOVED	TO BE REMOVED ON SUBJECT PROPERTY ONLY
P	SALIX BABYLONICA, THUJA OCCIDENTALIS, PINUS SYLVESTRIS, ACER NEGUNDO, CELTIS OCCIDENTALIS, ULMUS FUMIDA, LONICERA SP., FRAXINUS SP. AND RHAMNUS CATHARTICA	10cm-60cm	GOOD-DEAD	TO BE PRESERVED	
Q	POPULUS SP.	10cm-25cm	GOOD	TO BE REMOVED	
R	THUJA OCCIDENTALIS	10cm-25cm	GOOD	TO BE REMOVED	
S	POPULUS SP., SALIX ALBA AND THUJA OCCIDENTALIS	10cm-25cm	GOOD-FAIR	TO BE REMOVED	
T	RHAMNUS CATHARTICA	10cm-20cm	GOOD	TO BE REMOVED	
U	CRATAEGUS SP., FRAXINUS SP. AND RHAMNUS CATHARTICA	10cm-25cm	GOOD-DEAD	TO BE REMOVED	TO BE REMOVED ON SUBJECT PROPERTY ONLY
V	CRATAEGUS SP., ACER NEGUNDO, AND MALUS SP.	30cm-45cm	FAIR-DEAD	TO BE REMOVED	
W	CRATAEGUS SP., ACER NEGUNDO, FRAXINUS SP. AND RHAMNUS CATHARTICA	10cm-40cm	FAIR-POOR	TO BE REMOVED	
X	POPULUS SP.	10cm-25cm	GOOD	TO BE REMOVED	

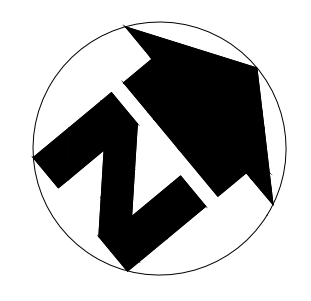
SINGLE TREE INVENTORY LIST

NO.	SPECIES	D.B.H.	COND.	STATUS	ADDITIONAL NOTE
1A	CRATAEGUS SP.	15cm	DEAD	TO BE REMOVED	MULTI TRUNK
2	ACER FLATANOIDES	25cm	GOOD	TO BE PRESERVED	ON ADJACENT PROPERTY
3A	FRAXINUS SP.	25cm	FAIR	TO BE REMOVED	TRUNK WOUNDS
4A	FRAXINUS SP.	15cm	GOOD	TO BE REMOVED	
5A	CRATAEGUS SP.	15cm	DEAD	TO BE REMOVED	MULTI TRUNK
6A	QUERCUS MACROCARPA	10cm	GOOD	TO BE REMOVED	
7A	FRAXINUS SP.	10cm	FAIR	TO BE REMOVED	2 TRUNKS, TRUNK DAMAGE
8A	FRAXINUS SP.	35cm	FAIR	TO BE REMOVED	
9A	FRAXINUS SP.	25cm	FAIR	TO BE REMOVED	LEANING
10A	FRAXINUS SP.	20cm	FAIR	TO BE REMOVED	
11A	FRAXINUS SP.	20cm	FAIR	TO BE REMOVED	
12A	MALUS SP.	45cm	FAIR	TO BE REMOVED	50% DEAD BRANCHES
13A	CRATAEGUS SP.	25cm	DEAD	TO BE REMOVED	MULTI TRUNK
14A	FRAXINUS SP.	15cm	GOOD	TO BE REMOVED	
15A	CRATAEGUS SP.	25cm	DEAD	TO BE REMOVED	MULTI TRUNK
16A	CRATAEGUS SP.	25cm	DEAD	TO BE REMOVED	MULTI TRUNK
17A	CRATAEGUS SP.	20cm	DEAD	TO BE REMOVED	COFFICE
18A	CRATAEGUS SP.	20cm	DEAD	TO BE REMOVED	
19A	CRATAEGUS SP.	20cm	DEAD	TO BE REMOVED	VINE CHOKED
20A	CRATAEGUS SP.	25cm	DEAD	TO BE REMOVED	
21A	FRAXINUS CATHARTICA	15cm	POOR	TO BE REMOVED	MULTI TRUNK
22A	CRATAEGUS SP.	35cm	DEAD	TO BE REMOVED	
23A	CRATAEGUS SP.	25cm	DEAD	TO BE REMOVED	
24A	CRATAEGUS SP.	20cm	DEAD	TO BE REMOVED	
25A	CRATAEGUS SP.	25cm	DEAD	TO BE REMOVED	
26A	ULMUS FUMIDA	10cm	GOOD	TO BE REMOVED	MULTI TRUNK
27A	ULMUS FUMIDA	10cm	GOOD	TO BE REMOVED	MULTI TRUNK
28A	ULMUS FUMIDA	10cm	GOOD	TO BE REMOVED	MULTI TRUNK
29A	JUNIFERUS VIRGINIANA	25cm	GOOD	TO BE REMOVED	
30A	JUNIFERUS VIRGINIANA	15cm	POOR	TO BE REMOVED	DEAD LEADER
31A	CRATAEGUS SP.	25cm	DEAD	TO BE PRESERVED	
32A	FRAXINUS SP.	50cm	FAIR	TO BE PRESERVED	TRUNK DAMAGE, 4 TRUNKS
33A	ACER FLATANOIDES	15cm	GOOD	TO BE REMOVED	TREE TAGGED
34A	BETULA PAPERIFERA	25cm	GOOD	TO BE PRESERVED	ON ADJACENT PROPERTY
35A	SALIX BABYLONICA	<45cm	GOOD	TO BE REMOVED	
36A	MALUS SP.	20cm	POOR	TO BE PRESERVED	
37A	MALUS SP.	20cm	FAIR	TO BE PRESERVED	
38A	ACER NEGUNDO	25cm	FAIR	TO BE REMOVED	
39A	ACER NEGUNDO	20cm	FAIR	TO BE REMOVED	COFFICE
40A	ACER NEGUNDO	35cm	POOR	TO BE REMOVED	50% DEAD
41A	ACER NEGUNDO	15cm	FAIR	TO BE REMOVED	ON SLOPE
42A	ACER NEGUNDO	15cm	FAIR	TO BE REMOVED	TRUNK DAMAGE, MULTI TRUNKS
43A	POPULUS SP.	30cm	GOOD	TO BE REMOVED	CO-DOMINANT STEMS W INCLUDED BARK
44A	FRAXINUS CATHARTICA	25cm	GOOD	TO BE REMOVED	MULTI TRUNK
45A	FRAXINUS SP.	25cm	DEAD	TO BE REMOVED	
46A	ACER FLATANOIDES	50cm	GOOD	TO BE PRESERVED	CO-DOMINANT STEMS W INCLUDED BARK
47A	ACER FLATANOIDES	50cm	GOOD	TO BE PRESERVED	CO-DOMINANT STEMS W INCLUDED BARK
48A	ACER FLATANOIDES	50cm	GOOD	TO BE PRESERVED	CO-DOMINANT STEMS W INCLUDED BARK
49A	ACER FLATANOIDES	50cm	GOOD	TO BE PRESERVED	CO-DOMINANT STEMS W INCLUDED BARK
50A	ACER FLATANOIDES	50cm	GOOD	TO BE PRESERVED	CO-DOMINANT STEMS W INCLUDED BARK
51A	ACER FLATANOIDES	50cm	GOOD	TO BE PRESERVED	CO-DOMINANT STEMS W INCLUDED BARK
105A	CELTIS OCCIDENTALIS	15cm	FAIR	TO BE REMOVED	TREE TAGGED
877A	FRAXINUS SP.	10cm	GOOD	TO BE REMOVED	TREE TAGGED
881A	FRAXINUS SP.	35cm	GOOD	TO BE REMOVED	TREE TAGGED
892A	ACER FLATANOIDES	45cm	GOOD	TO BE PRESERVED	BOUNDARY TREE, TREE TAGGED
893A	CELTIS OCCIDENTALIS	15cm	FAIR	TO BE REMOVED	TREE TAGGED
895A	CELTIS OCCIDENTALIS	15cm	FAIR	TO BE PRESERVED	TREE TAGGED
896A	FRAXINUS SP.	45cm	GOOD	TO BE PRESERVED	TREE TAGGED
1645	CRATAEGUS SP.	25cm	DEAD	TO BE REMOVED	TREE TAGGED



- GENERAL NOTES**
- CONTRACTOR TO LOCATE ALL UNDERGROUND UTILITIES.
 - TOPOGRAPHIC INFORMATION AS PER VAN HARTEN SURVEYING.
 - DRAFT PLAN OF SUBDIVISION INFORMATION AS PER ASTRID J. CLOS PLANNING CONSULTANTS.
 - ENGINEERING AS PER G1 BLUEPLAN ENGINEERING LIMITED.

ELORA RIDGE DEVELOPMENTS LIMITED
 INVERHAUGH PASTURE EDGE SUBDIVISION



2.	Jan.13.20	Revised as per grading	CMH
1.	Dec.14.18	Issued for approval	CMH
no.	date	description	by
REVISIONS			

PROPOSED DEVELOPMENT
 INVERHAUGH
 TOWNSHIP OF CENTRE WELLINGTON

Tree Management Plan

MacKinnon & Associates
 Providing Solutions in Urban, Landscape and Environmental Planning
 a division of 907216 Ontario Inc.

550 Parkside Drive, Unit A-21, Waterloo, Ontario N2L 5V4
 Tel: (519) 725-5140 FAX: (519) 725-5144

DRAWN BY:	CMH	DESIGNED BY:	CMH	APPROVED BY:	AWH
PROJECT NO:	2018-58	SCALE:	1:1000	DATE:	August 2018
PLOTTED:	January 13, 2020	SHEET:			L1

LEGEND

	EXISTING TREES TO REMAIN
	EXISTING TREES TO BE REMOVED
	TREE PROTECTION FENCE

- TREE PROTECTION NOTES**
- AS PART OF ANY TREE REMOVAL OPERATION ALL STEMS, LIMBS AND STUMPS SHOULD BE REMOVED FROM THE SITE.
 - UPON COMPLETION OF ANY TREE REMOVAL OPERATIONS, TREE PROTECTION FENCING SHOULD BE INSTALLED AS ILLUSTRATED. THIS PROTECTION FENCING SHOULD BE MAINTAINED UNTIL ALL EXCAVATION AND BUILDING CONSTRUCTION WORK IS COMPLETED. SEE TREE PROTECTION FENCING DETAIL ON L2.
 - ANY ROOTS DISTURBED DURING CONSTRUCTION SHOULD BE CUT CLEANLY AND BURIED IMMEDIATELY.
 - NO HEAVY EQUIPMENT OR STOCKING OF MATERIAL SHALL OCCUR WITHIN THE DRIFTLINES OF ANY TREES THAT ARE TO BE PRESERVED.
 - TREE PROTECTION MEASURES TO BE INSPECTED BY LANDSCAPE ARCHITECT AND TOWNSHIP FORESTRY STAFF PRIOR TO START OF CONSTRUCTION.
 - IF CONSTRUCTION OR ANY WORK OCCURS WITHIN THE TREE PRESERVATION ZONE, INSIDE THE LIMITS OF THE TREE PROTECTION FENCE, IT IS NECESSARY TO ONLY USE HAND TOOLS. NO MACHINERY WILL BE PERMITTED IN THIS ZONE.
 - ANY EXISTING VEGETATION THAT IS IMPACTED DURING SITE DEVELOPMENT WILL BE REINSTATED TO THE SATISFACTION OF THE TOWNSHIP.

WOODLOT ENLARGEMENT
1:400

TAG NO.	SPECIES	D.B.H.	COND.	STATUS	ADDITIONAL NOTE
301	ACER NEGUNDO	25cm	FAIR	TO BE PRESERVED	LEANING
302	ACER NEGUNDO	30cm	FAIR	TO BE PRESERVED	LEANING
303	FRAXINUS SP.	40cm	FAIR	TO BE PRESERVED	75% DEAD
304	ACER NEGUNDO	25cm	FAIR	TO BE PRESERVED	LEANING
305	FRAXINUS SP.	40cm	FAIR	TO BE PRESERVED	30% DEAD
306	FAGUS GRANDIFLORA	55cm	FAIR	TO BE PRESERVED	70% CROWN DIEBACK
307	FRAXINUS SP.	40cm	GOOD	TO BE PRESERVED	
308	ACER NEGUNDO	25cm	FAIR	TO BE PRESERVED	LEANING
309	ACER NEGUNDO	30cm	GOOD	TO BE PRESERVED	70% DEAD
310	ACER NEGUNDO	30cm	FAIR	TO BE PRESERVED	BROKEN TRUNK, LEANING
311	ACER NEGUNDO	25cm	FAIR	TO BE PRESERVED	LEANING
312	ACER NEGUNDO	25cm	FAIR	TO BE PRESERVED	VINE CHOKED
313	ACER NEGUNDO	35cm	FAIR	TO BE PRESERVED	LEANING
314	FRAXINUS SP.	35cm	POOR	TO BE PRESERVED	LEANING, 75% DEAD
315	OSTRYA VIRGINIANA	25cm	GOOD	TO BE PRESERVED	
316	OSTRYA VIRGINIANA	30cm	GOOD	TO BE PRESERVED	
317	FRAXINUS SP.	25cm	POOR	TO BE PRESERVED	75% DEAD
318	FRAXINUS SP.	35cm	POOR	TO BE PRESERVED	80% DEAD
319	FRAXINUS SP.	35cm	POOR	TO BE PRESERVED	80% DEAD
320	FRAXINUS SP.	35cm	POOR	TO BE PRESERVED	70% DEAD
321	FRAXINUS SP.	25cm	POOR	TO BE PRESERVED	BLOWN OVER, SPLIT TRUNK
322	FRAXINUS SP.	20cm	GOOD	TO BE PRESERVED	LEANING
323	FRAXINUS SP.	20cm	GOOD	TO BE PRESERVED	LEANING
324	FRAXINUS SP.	40cm	POOR	TO BE PRESERVED	75% DEAD
325	FRAXINUS SP.	45cm	FAIR	TO BE PRESERVED	40% DEAD
326	FRAXINUS SP.	30cm	POOR	TO BE PRESERVED	LEANING, TRUNK ROT
327	FRAXINUS SP.	45cm	POOR	TO BE PRESERVED	50% DEAD, TRUNK WOUND
328	ACER SACCHARUM	40cm	FAIR	TO BE PRESERVED	TWISTED TRUNK
329	FRAXINUS SP.	30cm	FAIR	TO BE PRESERVED	
330	FRAXINUS SP.	30cm	FAIR	TO BE PRESERVED	40% DEAD, EXPOSED ROOTS
331	OSTRYA VIRGINIANA	25cm	GOOD	TO BE PRESERVED	
332	PRUNUS SEROTINA	35cm	DEAD	TO BE REMOVED	TRUNK ONLY
333	ULMUS AMERICANA	45cm	DEAD	TO BE PRESERVED	TRUNK ONLY
334	PRUNUS SEROTINA	50cm	FAIR	TO BE PRESERVED	CO-DOMINANT STEMS W INCLUDED BARK
335	QUERCUS MACROCARPA	65cm	FAIR	TO BE PRESERVED	20% DEAD
336	QUERCUS MACROCARPA	25cm	FAIR	TO BE PRESERVED	
337	PRUNUS SEROTINA	45cm	FAIR	TO BE PRESERVED	
338	FRAXINUS SP.	45cm	FAIR	TO BE PRESERVED	30% DEAD
339	PRUNUS SEROTINA	45cm	FAIR	TO BE PRESERVED	30% DEAD
340	PRUNUS SEROTINA	40cm	FAIR	TO BE PRESERVED	30% DEAD
341	QUERCUS MACROCARPA	45cm	FAIR	TO BE PRESERVED	
342	TILIA AMERICANA	25cm	FAIR	TO BE PRESERVED	LEANING
343	TILIA AMERICANA	40cm	GOOD	TO BE PRESERVED	
344	FRAXINUS SP.	45cm	POOR	TO BE REMOVED (SEE REMOVAL NOTE)	TRUNK ROT, 75% DEAD
345	FRAXINUS SP.	45cm	POOR	TO BE REMOVED (SEE REMOVAL NOTE)	
346	FRAXINUS SP.	50cm	FAIR	TO BE PRESERVED	
347	ACER SACCHARUM	60cm	GOOD	TO BE PRESERVED	
348	ACER SACCHARUM	50cm	GOOD	TO BE PRESERVED	
349	FRAXINUS SP.	25cm	POOR	TO BE PRESERVED	60% DEAD
350	FRAXINUS SP.	30cm	GOOD	TO BE PRESERVED	
351	FRAXINUS SP.	25cm	DEAD	TO BE REMOVED (SEE REMOVAL NOTE)	TRUNK ONLY
352	ACER SACCHARUM	45cm	GOOD	TO BE PRESERVED	
353	ACER SACCHARUM	45cm	GOOD	TO BE PRESERVED	
354	ACER SACCHARUM	25cm	GOOD	TO BE PRESERVED	
355	PRUNUS SEROTINA	65cm	POOR	TO BE PRESERVED	TRUNK ROT
356	FRAXINUS SP.	35cm	FAIR	TO BE REMOVED (SEE REMOVAL NOTE)	BENT TRUNK, TRUNK WOUND
357	FRAXINUS SP.	40cm	GOOD	TO BE PRESERVED	
358	FRAXINUS SP.	40cm	GOOD	TO BE PRESERVED	
359	FRAXINUS SP.	40cm	GOOD	TO BE PRESERVED	
360	FRAXINUS SP.	40cm	GOOD	TO BE PRESERVED	
361	FRAXINUS SP.	25cm	FAIR	TO BE PRESERVED	TRUNK ONLY
362	FRAXINUS SP.	25cm	FAIR	TO BE PRESERVED	TRUNK ONLY
363	FRAXINUS SP.	65cm	FAIR	TO BE PRESERVED	
364	ACER SACCHARUM	60cm	GOOD	TO BE PRESERVED	
365	OSTRYA VIRGINIANA	35cm	GOOD	TO BE PRESERVED	
366	FRAXINUS SP.	50cm	FAIR	TO BE PRESERVED	
367	FRAXINUS SP.	45cm	FAIR	TO BE PRESERVED	
368	FRAXINUS SP.	45cm	FAIR	TO BE PRESERVED	
369	ACER SACCHARUM	25cm	GOOD	TO BE PRESERVED	
370	FRAXINUS SP.	55cm	GOOD	TO BE PRESERVED	
371	FRAXINUS SP.	45cm	POOR	TO BE PRESERVED	SMALL CROWN
372	FRAXINUS SP.	20cm	FAIR	TO BE PRESERVED	
373	FRAXINUS SP.	20cm	GOOD	TO BE PRESERVED	
374	FRAXINUS SP.	40cm	GOOD	TO BE PRESERVED	
375	FRAXINUS SP.	45cm	POOR	TO BE PRESERVED	VINE CHOKED
376	FRAXINUS SP.	65cm	FAIR	TO BE PRESERVED	
377	FRAXINUS SP.	65cm	FAIR	TO BE PRESERVED	
378	FRAXINUS SP.	20cm	DEAD	TO BE REMOVED (SEE REMOVAL NOTE)	TRUNK ONLY
379	FRAXINUS SP.	35cm	FAIR	TO BE PRESERVED	CO-DOMINANT STEMS W INCLUDED BARK
380	FRAXINUS SP.	35cm	FAIR	TO BE PRESERVED	TRUNK ONLY
381	FRAXINUS SP.	15cm	FAIR	TO BE PRESERVED	SMALL CROWN
382	FRAXINUS SP.	25cm	FAIR	TO BE PRESERVED	VINE CHOKED
383	FRAXINUS SP.	25cm	FAIR	TO BE PRESERVED	VINE CHOKED
384	FRAXINUS SP.	20cm	FAIR	TO BE PRESERVED	CO-DOMINANT STEMS W INCLUDED BARK
385	FRAXINUS SP.	20cm	FAIR	TO BE PRESERVED	LEANING
386	FRAXINUS SP.	35cm	POOR	TO BE PRESERVED	80% DEAD
387	FRAXINUS SP.	30cm	FAIR	TO BE PRESERVED	TRUNK WOUND
388	FRAXINUS SP.	15cm	GOOD	TO BE PRESERVED	
389	FRAXINUS SP.	25cm	GOOD	TO BE PRESERVED	
390	TILIA AMERICANA	50cm	FAIR	TO BE PRESERVED	TRUNK CAVITIES
391	TILIA AMERICANA	35cm	GOOD	TO BE PRESERVED	
392	FRAXINUS SP.	60cm	FAIR	TO BE PRESERVED	REFER TO TREE 384 & 392 NOTE
393	FRAXINUS SP.	50cm	FAIR	TO BE PRESERVED	
394	FRAXINUS SP.	40cm	DEAD	TO BE REMOVED	
395	FRAXINUS SP.	50cm	GOOD	TO BE PRESERVED	TRUNK ONLY
396	ACER SACCHARUM	20cm	GOOD	TO BE PRESERVED	
397	TILIA AMERICANA	30cm	GOOD	TO BE PRESERVED	3 TRUNKS
398	FRAXINUS SP.	40cm	FAIR	TO BE PRESERVED (SEE REMOVAL NOTE)	50% DEAD, CO-DOM. STEMS W INCL. BARK
399	CRATAEGUS SP.	15cm	FAIR	TO BE REMOVED	MINOR DIEBACK
400	POPULUS SP.	25cm	POOR	TO BE PRESERVED	
401	ACER SACCHARUM	65cm	GOOD	TO BE PRESERVED	
402	OSTRYA VIRGINIANA	30cm	GOOD	TO BE PRESERVED	
403	OSTRYA VIRGINIANA	25cm	GOOD	TO BE PRESERVED	
404	OSTRYA VIRGINIANA	30cm	GOOD	TO BE PRESERVED	
405	FRAXINUS SP.	40cm	FAIR	TO BE PRESERVED	TRUNK ONLY
406	FRAXINUS SP.	45cm	POOR	TO BE PRESERVED	
407	FRAXINUS SP.	50cm	DEAD	TO BE PRESERVED	TRUNK ONLY
408	FRAXINUS SP.	55cm	FAIR	TO BE PRESERVED	
409	FRAXINUS SP.	25cm	DEAD	TO BE PRESERVED	TRUNK ONLY
410	FRAXINUS SP.	25cm	DEAD	TO BE PRESERVED	TRUNK ONLY
411	FRAXINUS SP.	65cm	FAIR	TO BE PRESERVED	

412	FRAXINUS SP.	20cm	FAIR	TO BE PRESERVED	
413	FRAXINUS SP.	35cm	DEAD	TO BE REMOVED (SEE REMOVAL NOTE)	TRUNK ONLY
414	FRAXINUS SP.	30cm	GOOD	TO BE PRESERVED	
415	FRAXINUS SP.	25cm	FAIR	TO BE PRESERVED	
416	ACER SACCHARUM	20cm	GOOD	TO BE PRESERVED	ON SLOPE, CO-DOM. STEMS W INCL. BARK
417	ACER SACCHARUM	20cm	GOOD	TO BE PRESERVED	ON SLOPE
418	FRAXINUS SP.	20cm	GOOD	TO BE PRESERVED	
419	OSTRYA VIRGINIANA	20cm	GOOD	TO BE PRESERVED	
420	FRAXINUS SP.	45cm	DEAD	TO BE REMOVED (SEE REMOVAL NOTE)	TRUNK ONLY
421	FRAXINUS SP.	45cm	FAIR	TO BE PRESERVED	
422	FRAXINUS SP.	45cm	FAIR	TO BE PRESERVED	
423	FRAXINUS SP.	35cm	DEAD	TO BE REMOVED (SEE REMOVAL NOTE)	TRUNK ONLY
424	FRAXINUS SP.	35cm	DEAD	TO BE REMOVED (SEE REMOVAL NOTE)	TRUNK ONLY
425	FRAXINUS SP.	45cm	FAIR	TO BE PRESERVED	
426	FRAXINUS SP.	30cm	POOR	TO BE PRESERVED (SEE REMOVAL NOTE)	80% DEAD, LEANING
427	FRAXINUS SP.	35cm	FAIR	TO BE PRESERVED	
428	FRAXINUS SP.	65cm	POOR	TO BE PRESERVED	SMALL CROWN
429	FRAXINUS SP.	25cm	POOR	TO BE PRESERVED	50% DEAD, 2 TRUNKS
430	FRAXINUS SP.	45cm	FAIR	TO BE PRESERVED	
431	FRAXINUS SP.	45cm	FAIR	TO BE PRESERVED	
432	FRAXINUS SP.	30cm	FAIR	TO BE PRESERVED	
433	FRAXINUS SP.	35cm	FAIR	TO BE PRESERVED	
434	FRAXINUS SP.	30cm	GOOD	TO BE PRESERVED	
435	FRAXINUS SP.	40cm	GOOD	TO BE PRESERVED	
436	FRAXINUS SP.	35cm	GOOD	TO BE PRESERVED	
437	ACER SACCHARUM	15cm	GOOD	TO BE PRESERVED	
438	FRAXINUS SP.	30cm	FAIR	TO BE PRESERVED	
439	FRAXINUS SP.	30cm	FAIR	TO BE PRESERVED	
440	FRAXINUS SP.	20cm	FAIR	TO BE PRESERVED	
441	FRAXINUS SP.	25cm	FAIR	TO BE PRESERVED	
442	FRAXINUS SP.	30cm	FAIR	TO BE PRESERVED	
443	FRAXINUS SP.	20cm	DEAD	TO BE PRESERVED	
444	FRAXINUS SP.	40cm	FAIR	TO BE PRESERVED	
445	FRAXINUS SP.	40cm	FAIR	TO BE PRESERVED	
446	FRAXINUS SP.	20cm	DEAD	TO BE PRESERVED	
447	FRAXINUS SP.	20cm	DEAD	TO BE PRESERVED	
448	FRAXINUS SP.	20cm	POOR	TO BE PRESERVED	TRUNK ROT, 75% DEAD
449	FRAXINUS SP.	25cm	GOOD	TO BE PRESERVED	
450	FRAXINUS SP.	45cm	FAIR	TO BE PRESERVED	
451	FRAXINUS SP.	20cm	DEAD	TO BE PRESERVED	
452	OSTRYA VIRGINIANA	30cm	GOOD	TO BE PRESERVED	LEANING
453	FRAXINUS SP.	30cm	FAIR	TO BE PRESERVED	
454	FRAXINUS SP.	45cm	FAIR	TO BE PRESERVED	
455	FRAXINUS SP.	35cm	FAIR	TO BE PRESERVED	
456	FRAXINUS SP.	35cm	FAIR	TO BE PRESERVED	
457	FRAXINUS SP.	25cm	FAIR	TO BE PRESERVED	
458	ACER SACCHARUM	45cm	GOOD	TO BE PRESERVED	CO-DOMINANT STEMS W INCLUDED BARK
459	FRAXINUS SP.	50cm	FAIR	TO BE PRESERVED	
460	FRAXINUS SP.	35cm	FAIR	TO BE PRESERVED	
461	FRAXINUS SP.	40cm	DEAD	TO BE PRESERVED	
462	FRAXINUS SP.	50cm	FAIR	TO BE PRESERVED	
463	FRAXINUS SP.	40cm	FAIR	TO BE PRESERVED	
464	FRAXINUS SP.	40cm	POOR	TO BE PRESERVED	VINE CHOKED
465	FRAXINUS SP.	35cm	POOR	TO BE PRESERVED	SMALL CROWN
466	FRAXINUS SP.	50cm	FAIR	TO BE PRESERVED	
467	FRAXINUS SP.	40cm	FAIR	TO BE PRESERVED	CO-DOMINANT STEMS W INCLUDED BARK
468	FRAXINUS SP.	20cm	POOR	TO BE PRESERVED	VINE CHOKED
469	ACER SACCHARUM	25cm	FAIR	TO BE PRESERVED	
470	FRAXINUS SP.	25cm	DEAD	TO BE REMOVED (SEE REMOVAL NOTE)	
471	FRAXINUS SP.	30cm	FAIR	TO BE PRESERVED	
472	FRAXINUS SP.	40cm	FAIR	TO BE PRESERVED	
473	OSTRYA VIRGINIANA	25cm	GOOD	TO BE PRESERVED	
474	FRAXINUS SP.	20cm	FAIR	TO BE PRESERVED	
475	FRAXINUS SP.	30cm	FAIR	TO BE PRESERVED	
476	OSTRYA VIRGINIANA	25cm	GOOD	TO BE PRESERVED	
477	OSTRYA VIRGINIANA	30cm	FAIR	TO BE PRESERVED	CO-DOMINANT STEMS W INCLUDED BARK
478	FRAXINUS SP.	25cm	FAIR	TO BE PRESERVED	
479	FRAXINUS SP.	50cm	FAIR	TO BE PRESERVED	
480	FRAXINUS SP.	50cm	FAIR	TO BE PRESERVED	SUPPRESSED ONE SIDE
481	FRAXINUS SP.	25cm	DEAD	TO BE REMOVED (SEE REMOVAL NOTE)	
482	FRAXINUS SP.	40cm	FAIR	TO BE PRESERVED	
483	FRAXINUS SP.	35cm	FAIR	TO BE PRESERVED	
484	FRAXINUS SP.	45cm	DEAD	TO BE REMOVED (SEE REMOVAL NOTE)	
485	FRAXINUS SP.	60cm	FAIR	TO BE PRESERVED	
486	FRAXINUS SP.	50cm	FAIR	TO BE PRESERVED	
487	FRAXINUS SP.	20cm	FAIR	TO BE PRESERVED	
488	FRAXINUS SP.	30cm	FAIR	TO BE PRESERVED	
489	ACER SACCHARUM	20cm	GOOD	TO BE PRESERVED	
490	FRAXINUS SP.	20cm	FAIR	TO BE PRESERVED	
491	FRAXINUS SP.	35cm	POOR	TO BE PRESERVED	CO-DOM. STEMS W INCL. BARK, TRUNK ROT
492	FRAXINUS SP.	35cm	FAIR	TO BE PRESERVED	
493	FRAXINUS SP.	45cm	FAIR	TO BE PRESERVED	CO-DOM. STEMS W INCL. BARK, TRUNK ROT
494	FRAXINUS SP.	35cm	FAIR	TO BE PRESERVED	LEANING
495	FRAXINUS SP.	25cm	FAIR	TO BE PRESERVED	LEANING
496	FRAXINUS SP.	35cm	FAIR	TO BE PRESERVED	
497	FRAXINUS SP.	50cm	FAIR	TO BE PRESERVED	
498	FRAXINUS SP.	65cm	FAIR	TO BE PRESERVED	SUPPRESSED ONE SIDE
499	FRAXINUS SP.	15cm	FAIR	TO BE PRESERVED	75% DEAD
500	FRAXINUS SP.	55cm	POOR	TO BE PRESERVED	
501	FRAXINUS SP.	25cm	DEAD	TO BE PRESERVED	
502	FRAXINUS SP.	45cm	FAIR	TO BE PRESERVED	
503	FRAXINUS SP.	20cm	FAIR	TO BE PRESERVED	
504	FRAXINUS SP.	45cm	FAIR	TO BE PRESERVED	
505	FRAXINUS SP.	30cm	FAIR	TO BE PRESERVED	
506	FRAXINUS SP.	20cm	DEAD	TO BE PRESERVED	
507	FRAXINUS SP.	45cm	FAIR	TO BE PRESERVED	3 TRUNKS
508	FRAXINUS SP.	40cm	POOR	TO BE PRESERVED	90% DEAD
509	FRAXINUS SP.	40cm	POOR	TO BE PRESERVED	90% DEAD
510	FRAXINUS SP.	40cm	FAIR	TO BE PRESERVED	
511	FRAXINUS SP.	45cm	FAIR	TO BE PRESERVED	

512	FRAXINUS SP.	45cm	FAIR	TO BE PRESERVED	
513	FRAXINUS SP.	45cm	FAIR	TO BE PRESERVED	
514	FRAXINUS SP.	45cm	FAIR	TO BE PRESERVED	
515	FRAXINUS SP.	45cm	FAIR	TO BE PRESERVED	
516	FRAXINUS SP.	45cm	FAIR	TO BE PRESERVED	
517	FRAXINUS SP.	45cm	FAIR	TO BE PRESERVED	
518	FRAXINUS SP.	45cm	FAIR	TO BE PRESERVED	
519	FRAXINUS SP.	45cm	FAIR	TO BE PRESERVED	
520	FRAXINUS SP.	45cm	FAIR	TO BE PRESERVED	
521	FRAXINUS SP.	45cm	FAIR	TO BE PRESERVED	
522	FRAXINUS SP.	45cm	FAIR	TO BE PRESERVED	
523	FRAXINUS SP.	45cm	FAIR	TO BE PRESERVED	
524	FRAXINUS SP.	45cm	FAIR	TO BE PRESERVED	
525	FRAXINUS SP.	45cm	FAIR	TO BE PRESERVED	
526	FRAXIN				