

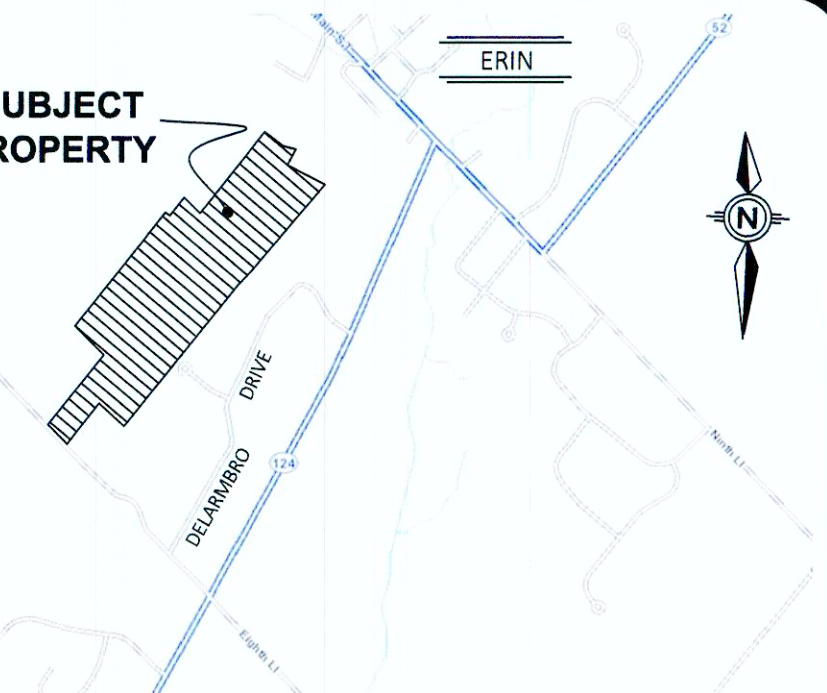
**DRAFT PLAN OF SUBDIVISION
OF PART OF LOT 14
CONCESSION 9**

GEOGRAPHIC TOWNSHIP OF ERIN
TOWN OF ERIN
COUNTY OF WELLINGTON

SCALE 1 : 1500



**SUBJECT
PROPERTY**



KEY PLAN

OWNER'S CERTIFICATE.

I HEREBY AUTHORIZE J.L. COX PLANNING CONSULTANTS INC. TO PREPARE AND SUBMIT THIS DRAFT PLAN OF SUBDIVISION FOR APPROVAL.

SIGNED: *J. Salicrú* DATE: Dec 18, 2018.
Homes in the Hills Inc.

SURVEYOR'S CERTIFICATE.

I HEREBY CERTIFY THAT THE BOUNDARIES OF THE LAND TO BE SUBDIVIDED AND THEIR RELATIONSHIP TO THE ADJACENT LANDS ARE ACCURATELY AND CORRECTLY SHOWN ON THIS PLAN.

SIGNED: *James Laws* DATE: Dec 18, 2018.
JAMES LAWS O.L.S.

DESIGN CRITERIA

Land Use	Area (ha)	%	Units
SINGLE DETACHED LOTS (1-33)	7.966	31.070	33
OPEN SPACE BLOCKS (34-37)	15.391	60.029	
STREETS (A AND B)	2.225	8.678	
RESERVE (BLOCK 38)	0.003	0.012	
EMERGENCY ACCESS (BLOCK 39)	0.054	0.211	
Total	25.639	100.0	33

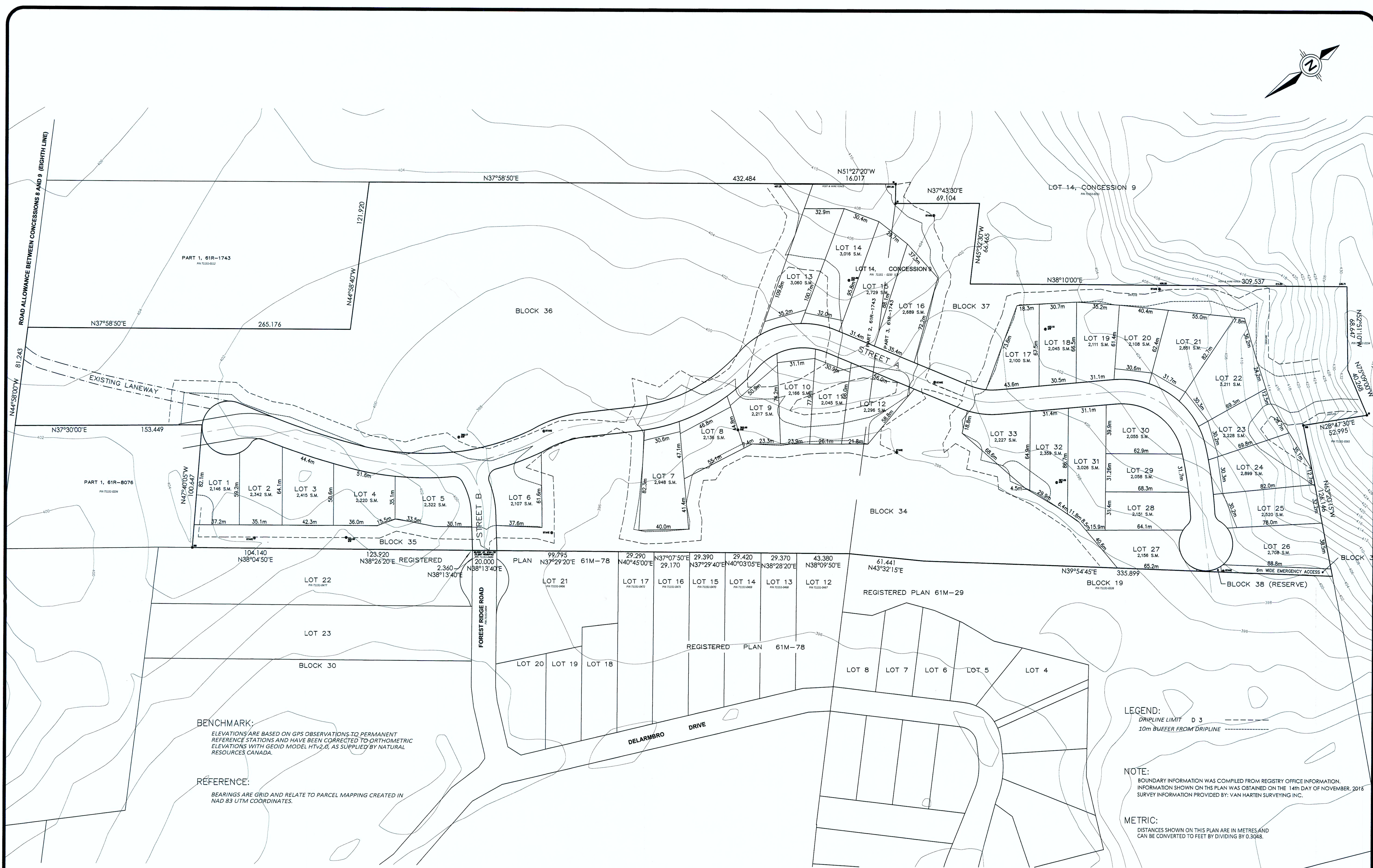
Information Required Pursuant to Section 51 (17), of the Planning Act, R.S.O. 1990

- | | |
|-------------------------------|-----------------------|
| A As Shown | H Municipal Piped |
| B As Shown | I Sandy Loam, Organic |
| C See Key Plan | J As Shown |
| D Single Detached Residential | K Hydro, Gas |
| E As Shown | L None |
| F As Shown | |
| G As Shown | |

J.L. Cox Planning Consultants Inc.
Urban And Rural Planning Services
17 Spencer Crescent,
Guelph, Ontario
N1L 1N1
Tel. (519) 836-5822

FILE 1510 8th LINE ERIN.DWG
Project No. 1510
DATE: DECEMBER 17, 2018

A1



BENCHMARK:
ELEVATIONS ARE BASED ON GPS OBSERVATIONS TO PERMANENT REFERENCE STATIONS AND HAVE BEEN CORRECTED TO ORTHOMETRIC ELEVATIONS WITH GEOID MODEL HTV2.0, AS SUPPLIED BY NATURAL RESOURCES CANADA.

REFERENCE:
BEARINGS ARE GRID AND RELATE TO PARCEL MAPPING CREATED IN NAD 83 UTM COORDINATES.

LEGEND:

DRIPLINE LIMIT D 3
10m BUFFER FROM DRIPLINE

NOTE:

BOUNDARY INFORMATION WAS COMPILED FROM REGISTRY OFFICE INFORMATION. INFORMATION SHOWN ON THIS PLAN WAS OBTAINED ON THE 14th DAY OF NOVEMBER, 2018. SURVEY INFORMATION PROVIDED BY: VAN HARTEN SURVEYING INC.

METRIC:

DISTANCES SHOWN ON THIS PLAN ARE IN METRES AND CAN BE CONVERTED TO FEET BY DIVIDING BY 0.3048.