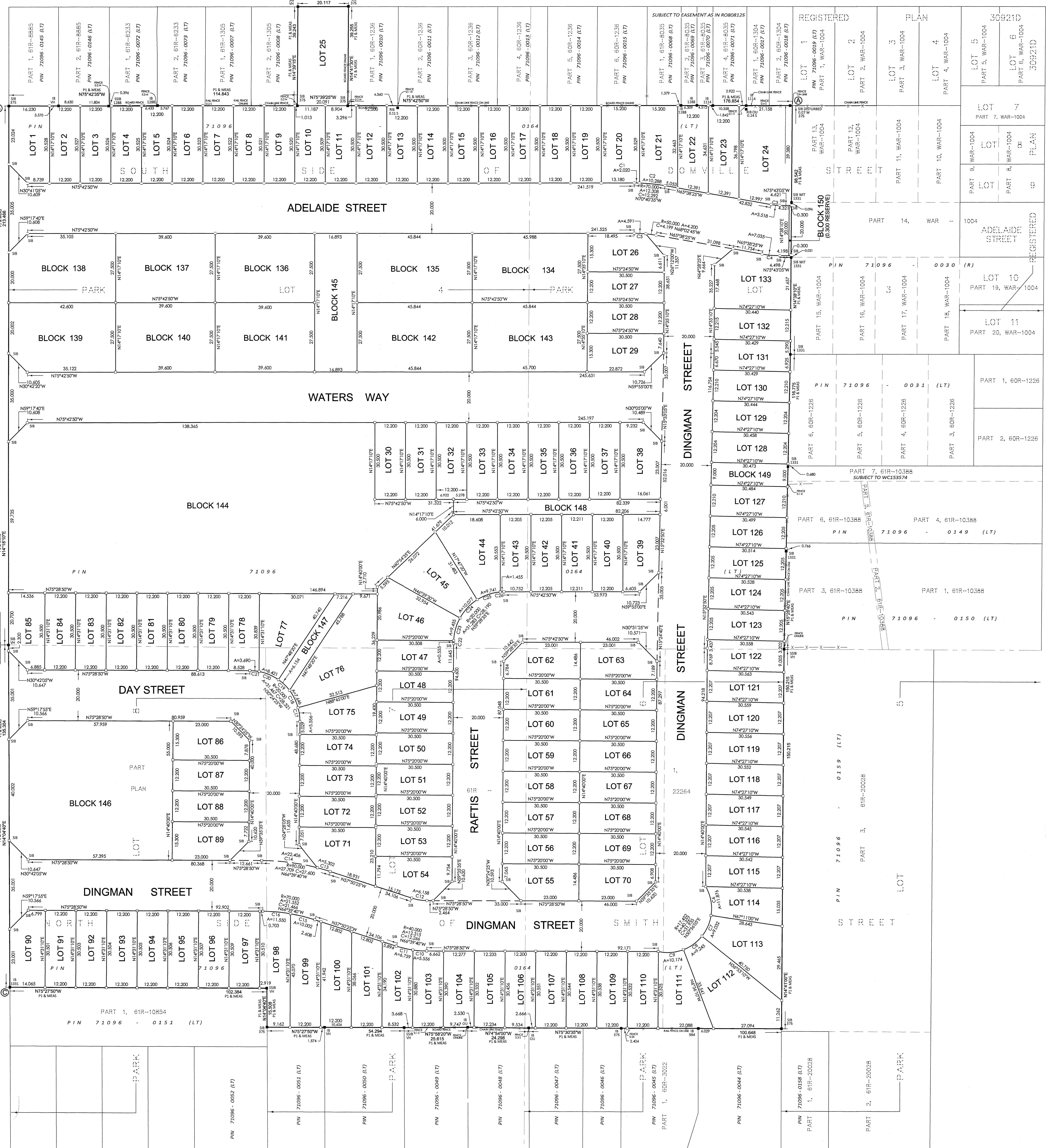


PLAN OF SUBDIVISION OF
PART OF PARK LOTS 6, 7, 8
NORTH SIDE OF SMITH STREET
 AND
PART OF PARK LOTS 3 AND 4
SOUTH SIDE OF DOMVILLE STREET
CROWN SURVEY
 GEOGRAPHIC VILLAGE OF ARTHUR
 TOWNSHIP OF WELLINGTON NORTH
 COUNTY OF WELLINGTON

CURVE TABLE

NUM	ARC	RADIUS	BEARING	DISTANCE
C1	20.00	30.000	N74°51'31"W	2.000
C2	10.38	30.000	N65°51'59"W	3.073
C3	3.518	30.000	N37°42'52"W	3.511
C4	7.035	30.000	N17°42'52"W	4.500
C5	4.500	30.000	N17°42'52"W	4.500
C6	11.075	17.462	N33°54'07"E	11.648
C7	9.031	17.462	N57°31'31"E	11.648
C8	9.245	17.462	N68°31'31"E	9.137
C9	33.114	17.462	N57°31'31"E	11.648
C10	5.566	40.000	N71°30'05"W	5.553
C11	6.759	40.000	N62°40'20"W	6.751
C12	6.334	20.000	N67°50'00"W	6.334
C13	5.302	30.000	N57°31'31"E	5.302
C14	21.455	30.000	N67°50'00"W	21.455
C15	10.000	30.000	N61°50'00"W	9.991
C16	11.500	30.000	N70°42'50"W	11.507
C17	5.566	20.000	N47°31'31"E	5.566
C18	7.446	30.000	N17°42'52"W	7.440
C19	6.334	30.000	N67°50'00"W	6.334
C20	8.421	20.000	N57°31'31"E	8.420
C21	8.860	20.000	N17°42'52"W	8.860
C22	0.555	20.000	N15°32'40"E	0.555
C23	9.405	20.000	N57°31'31"E	9.405
C24	10.007	20.000	N57°31'31"E	10.007
C25	9.741	20.000	N67°50'00"E	9.741
C26	1.455	30.000	N17°42'50"W	1.455

DOMVILLE STREET
 (ESTABLISHED BY CROWN SURVEY)
 PIN 71095-0002 (LT)



THIS PLAN IS APPROVED UNDER SECTION 51 OF THE PLANNING ACT, R.S.O. 1990, CHAPTER P.13
 DATED AT GUELPH THIS 1ST DAY OF SEPTEMBER 2022
 THE CORPORATION OF THE COUNTY OF WELLINGTON
 ALDO L. SALIS, M.Sc., B.E.S., M.C.P., R.P.P.
 DIRECTOR OF PLANNING AND DEVELOPMENT

PLAN 61M- 248
 I CERTIFY THAT THIS PLAN IS REGISTERED IN THE LAND REGISTRY OFFICE FOR THE LAND TITLES DIVISION OF WELLINGTON (S1) AT 13:35 O'CLOCK ON THE 15th DAY OF SEPT 2022 AND ENTERED IN THE PARCEL REGISTER FOR ALL OF PIN 71096-0164 (LT) AND THE REQUIRED CONSENTS ARE REGISTERED AS PLAN DOCUMENT NO. WCOV0247
 Lisa McCreddie
 REPRESENTATIVE FOR THE LAND REGISTRAR
 THIS PLAN COMPRISES OF ALL OF PIN 71096-0164 (LT)

BEARING AND COORDINATE NOTE:

- BEARINGS ARE GRID BEARINGS AND ARE DERIVED FROM GPS OBSERVATIONS AND ARE REFERRED TO THE UTM PROJECTION, ZONE 17, NAD 83 COORDINATE ADJUSTMENT.
- DISTANCES SHOWN ON THIS PLAN ARE ADJUSTED GROUND DISTANCES AND CAN BE CONVERTED TO GRID DISTANCES BY MULTIPLYING BY AN AVERAGED CORRECTION SCALE FACTOR OF 0.99995.
- COORDINATES ON THIS PLAN ARE UTM, ZONE 17, NAD83 (CGRS-2011) ADJUSTMENT AND ARE BASED ON GPS OBSERVATIONS FROM A NETWORK OF PERMANENT GPS REFERENCE STATIONS.

UTM COORDINATES (METRES)

POINT ID	NORTHING	EASTING
A	485927.69	538748.69
B	484044.62	538441.69
C	485566.68	538356.08

LEGEND

- DIKNOTES SURVEY MONUMENT SET
- DIKNOTES SURVEY MONUMENT FOUND
- DIKNOTES 2025 X 2025 X 30 STANDARD IRON BAR
- DIKNOTES 2025 X 4025 X 4025 IRON POINT STANDARD IRON BAR
- DIKNOTES 2025 X 100 X 100 IRON BAR
- DIKNOTES WITNESS
- DIKNOTES ORIGIN UNKNOWN
- DIKNOTES BLACK SHEDDERS, ROBINSON & DONALDSON LTD., O.L.S.
- DIKNOTES METZ AND LORENZ SURVEYING, O.L.S.
- DIKNOTES BLACK SHEDDERS, ROBINSON & DONALDSON LTD., O.L.S.
- DIKNOTES A. WILSON, O.L.S.
- DIKNOTES WATNE & BRUBAKER, O.L.S.
- DIKNOTES S. G. GRAMM, O.L.S.
- DIKNOTES DEPOSITED PLAN 61M-22064 BY (VH)

OWNER'S CERTIFICATE

THIS IS TO CERTIFY THAT:
 1. LOTS 1 TO 138, BOTH INCLUSIVE, BLOCK 134 TO 149 BOTH INCLUSIVE, THE RESERVE, NAMELY BLOCK 150 (0.300 RESERVE) AND THE STREETS NAMELY ADELAIDE STREET, WATERS WAY, DAY STREET, DINGMAN STREET, RAFTIS STREET, HAVE BEEN Laid OUT IN ACCORDANCE WITH MY INSTRUCTIONS.
 2. THE STREETS ARE DEDICATED TO THE CORPORATION OF THE TOWNSHIP OF WELLINGTON NORTH AS A PUBLIC HIGHWAY.

SURVEYOR'S CERTIFICATE

I CERTIFY THAT:
 1. THIS SURVEY AND PLAN ARE CORRECT AND IN ACCORDANCE WITH THE SURVEY ACT, THE SURVEYORS ACT, THE LAND TITLES ACT AND THE REGULATIONS MADE UNDER THEM.
 2. THIS SURVEY WAS COMPLETED ON THE 11th DAY OF JULY, 2022.

METRIC:

DISTANCES AND COORDINATES SHOWN ON THIS PLAN ARE IN METRES AND CAN BE CONVERTED TO FEET BY DIVIDING BY 0.3048.

Van Harten
 SURVEYING INC.
 LAND SURVEYORS AND ENGINEERS
 Kitchener/Matthews
 P.O. Box 745-8871
 Guelph
 Ph: 519-812-2293
 Fax: 519-812-2110
 www.vanharten.com
 info@vanhartens.com

CACHET DEVELOPMENTS (ARTHUR) INC.
 DIRECTOR OF DEVELOPMENT (ASO)
 (I HAVE AUTHORITY TO BIND THE CORPORATION)

DATE: AUGUST 15, 2022
 JAMES M. LAWS
 CHARTERED LAND SURVEYOR

THIS PLAN OF SURVEY RELATES TO AOLS PLAN SUBMISSION FORM NUMBER 2196293.

NOTE: ALL SET BACKS ARE I.F.S. UNLESS OTHERWISE NOTED.