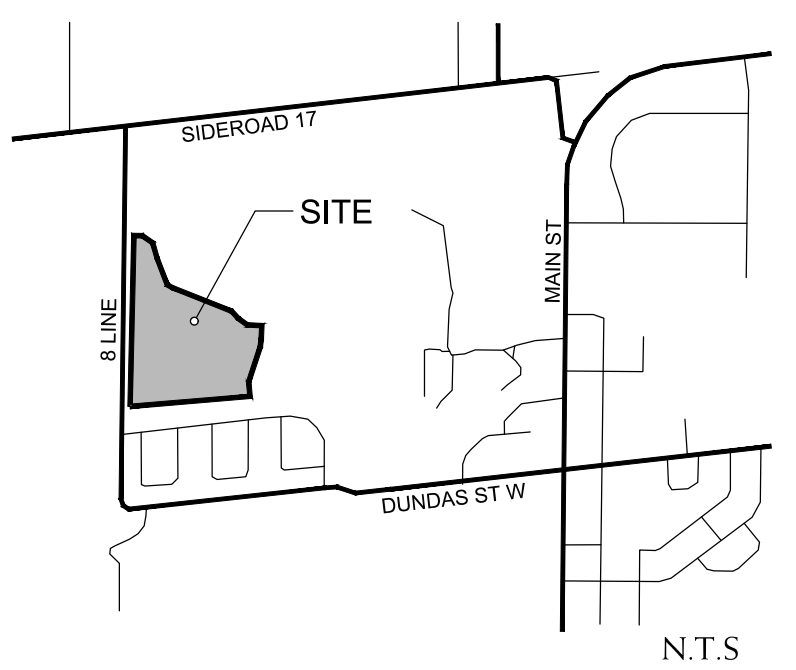


SUGGESTED STREET TREE PLANT LIST

BOTANICAL NAME	COMMON NAME	CALIFER	HEIGHT	SPREAD	ROOT	REMARKS	SPACINGS
DECIDUOUS TREES							
ACER X FREEMANII 'CELZAM'	CELEBRATION MAPLE	60mm	3500mm	1500mm	S.B.	EQUAL FORM	----
ACER SACCHARUM	SUGAR MAPLE	60mm	3500mm	1500mm	S.B.	EQUAL FORM	----
CARPINUS CAROLINIANA	BLUE BEECH/ MUSCLEWOOD	60mm	3500mm	1500mm	S.B.	EQUAL FORM	----
CORYLUS COLURNA	TURKISH HAZEL	60mm	3500mm	1500mm	S.B.	EQUAL FORM	----
FAGUS SYLVATICA	EUROPEAN BEECH	60mm	3500mm	1500mm	S.B.	EQUAL FORM	----
GLEDITSIA TRIACANTHOS 'INERMIS'	THORNLESS HONEY-LOCUST	60mm	3500mm	1500mm	S.B.	EQUAL FORM	----
GYMNOCLADUS DIOGUS 'ESPRESSO'	ESPRESSO KENTUCKY COFFEE TREE	60mm	3500mm	1500mm	S.B.	EQUAL FORM	----
PLATANUS X ACERIFOLIA 'BLOODGOOD'	LONDON PLANE TREE	60mm	3000mm	1200mm	S.B.	EQUAL FORM	----
QUERCUS RUBRA	RED OAK	60mm	3500mm	1500mm	S.B.	EQUAL FORM	----
TILIA AMERICANA 'BOULEVARD'	BOULEVARD BASSWOOD	60mm	3500mm	1500mm	S.B.	EQUAL FORM	----
ZELKOVA SERRATA	GREEN VASE ZELKOVA	60mm	3500mm	1500mm	S.B.	EQUAL FORM	----

ERIN MILLS SUBDIVISION
- ABAL 3528

KEY PLAN



LEGEND

○ PROPOSED STREET TREES
(SPACING = 10m O.C.)

NOTE:
ALL STAKES, HOSES, AND WIRES TO BE REMOVED BY CONTRACTOR PRIOR TO FINAL ACCEPTANCE.

MULCHPROOF IN NURSERY ENCLOSED IN 12mm DIAMETER RUBBER HOSE OR ARBORTIE OR APPROVED EQUAL, SECURED AROUND TREE TRUNK ABOVE FIRST STRONG BRANCH.

PRUNING SHALL BE LIMITED TO DEAD OR BROKEN BRANCHES AFTER PLANTING. MAINTAIN ORIGINAL SHAPE OF TREE. DO NOT TRIM LEADER BRANCH.

SET TREE 50mm HIGHER THAN ADJACENT FINISHED GRADE TO ALLOW FOR SETTLEMENT.

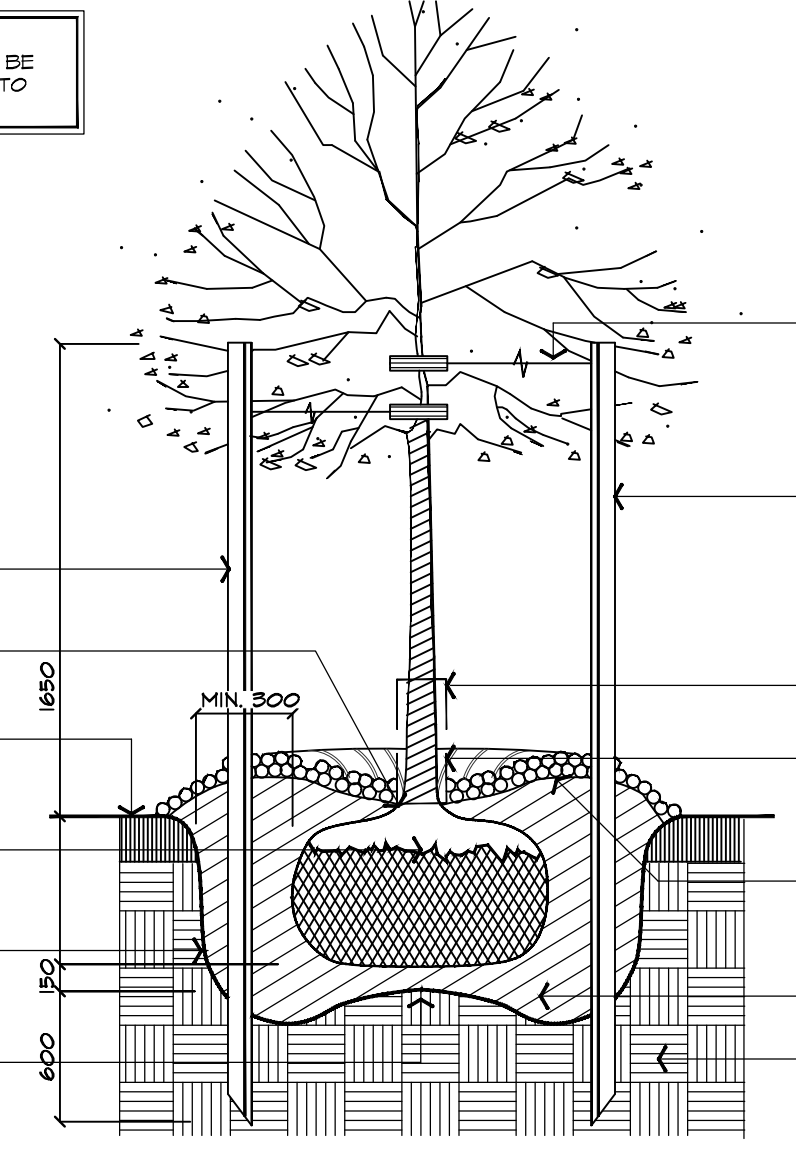
SET TREE STAKES JUST INSIDE TREE PIT AS SHOWN.

SOIL LEVEL SHOULD MATCH TOP OF ROOT BALL.

FINISHED GRADE

CUT AND REMOVE TOP 1/3 OF BURLAP FROM ROOTBALL INCLUDING ALL TIE ROPE AND WIRE. SCARIFY, IRRIGATE AND FERTILIZE THE INSIDE OF THE TREE PIT PRIOR TO PLANTING.

PROVIDE 15mm SOIL MOUND AT BASE OF PIT AS SHOWN.



12 GAUGE GALVANIZED WIRE ENCLOSED IN 12mm DIAMETER RUBBER HOSE OR ARBORTIE OR APPROVED EQUAL, SECURED AROUND TREE TRUNK ABOVE FIRST STRONG BRANCH.

TWO 2400mm LONG 50mm SQUARE PRESSURE TREATED WOOD STAKES SECURED INTO GROUND AS SHOWN.

PROVIDE APPROVED RODENT GUARD WHERE REQUIRED.

KEEP MULCH BACK 50mm FROM TRUNK OF TREE.

CONSTRUCT 100mm SOIL SAUCER AROUND TREE BASE AND COVER WITH 15mm APPROVED SHREDDED WOOD MULCH.

SPECIFIED SOIL MIXTURE FIRMLY COMPACTED TO ELIMINATE AIR POCKETS AND PREVENT SETTLEMENT.

COMPACTED SUBGRADE

1 DECIDUOUS TREE PLANTING DETAIL
TYPICAL INSTALLATION FOR 15mm CALIFER TREES OR LESS

NTS

ABAL P101-1212/4

BASE INFORMATION OBTAINED ELECTRONICALLY FROM ARMSTRONG PLANNING (JOB NO. 21.2842.00)

no.	date	version	by
1.	OCT 3 2023	ISSUED FOR DRAFT PLAN RESUBMISSION #3	MC/ED
0.	MAY 18 2022	ISSUED FOR DRAFT PLAN AND ZONING SUBMISSION #1	AV

All information hereon to be checked and verified at the site and any discrepancies must be reported to and clarified by the landscape architect before commencing work. All drawings, specifications, details, digital information, etc., prepared by the landscape architect are instruments of service and as such are his property and must be returned at his request.

MEMBER

ALEXANDER BUDREVICS
LANDSCAPE ARCHITECTS

885 Don Mills Road, Second Tower, Suite 212
Toronto, Ontario, Canada, M3C 1W3

416.444.5201

www.budrevics.com

project

ERIN SUBDIVISION
5528 EIGHTH LINE
ERIN, ONTARIO

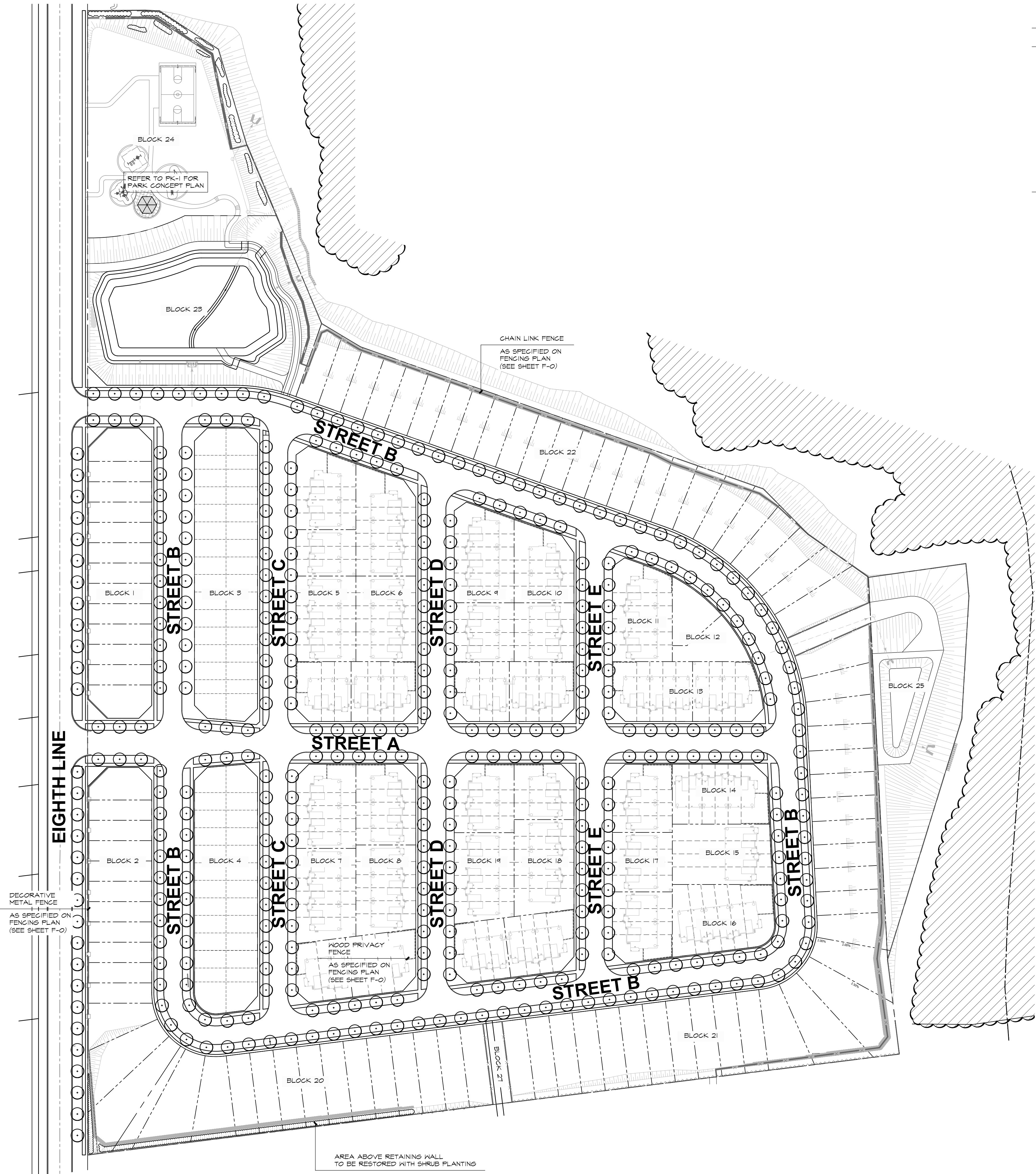
EC (ERIN) GP INC.

drawing

STREET TREE CONCEPT PLAN

date	DECEMBER 14, 2021	drawn	AV
scale*	1:1000	file	3528 ST0 V1-231003
direction			
project no.			
sheet no.	ST-0		

*NOTED SCALE IS APPLICABLE ONLY WHEN PRINTED ON ARCH D (34"x36") SIZE SHEET



AREA ABOVE RETAINING WALL TO BE RESTORED WITH SHRUB PLANTING

DECORATIVE METAL FENCE AS SPECIFIED ON FENCING PLAN (SEE SHEET F-0)

CHAIN LINK FENCE AS SPECIFIED ON FENCING PLAN (SEE SHEET F-0)

BLOCK 24
REFER TO PK-1 FOR PARK CONCEPT PLAN

BLOCK 23

BLOCK 22

BLOCK 11

BLOCK 12

BLOCK 13

BLOCK 14

BLOCK 15

BLOCK 17

BLOCK 18

BLOCK 19

BLOCK 20

BLOCK 21

BLOCK 25

BLOCK 1

BLOCK 3

BLOCK 5

BLOCK 6

BLOCK 4

BLOCK 10

BLOCK 9

BLOCK 2

BLOCK 4

BLOCK 7

BLOCK 8

BLOCK 19

BLOCK 16

BLOCK 17

BLOCK 15

BLOCK 16

BLOCK 20

BLOCK 21

WOOD PRIVACY FENCE AS SPECIFIED ON FENCING PLAN (SEE SHEET F-0)

EIGHTH LINE

STREET B

STREET C

STREET D

STREET E

STREET A

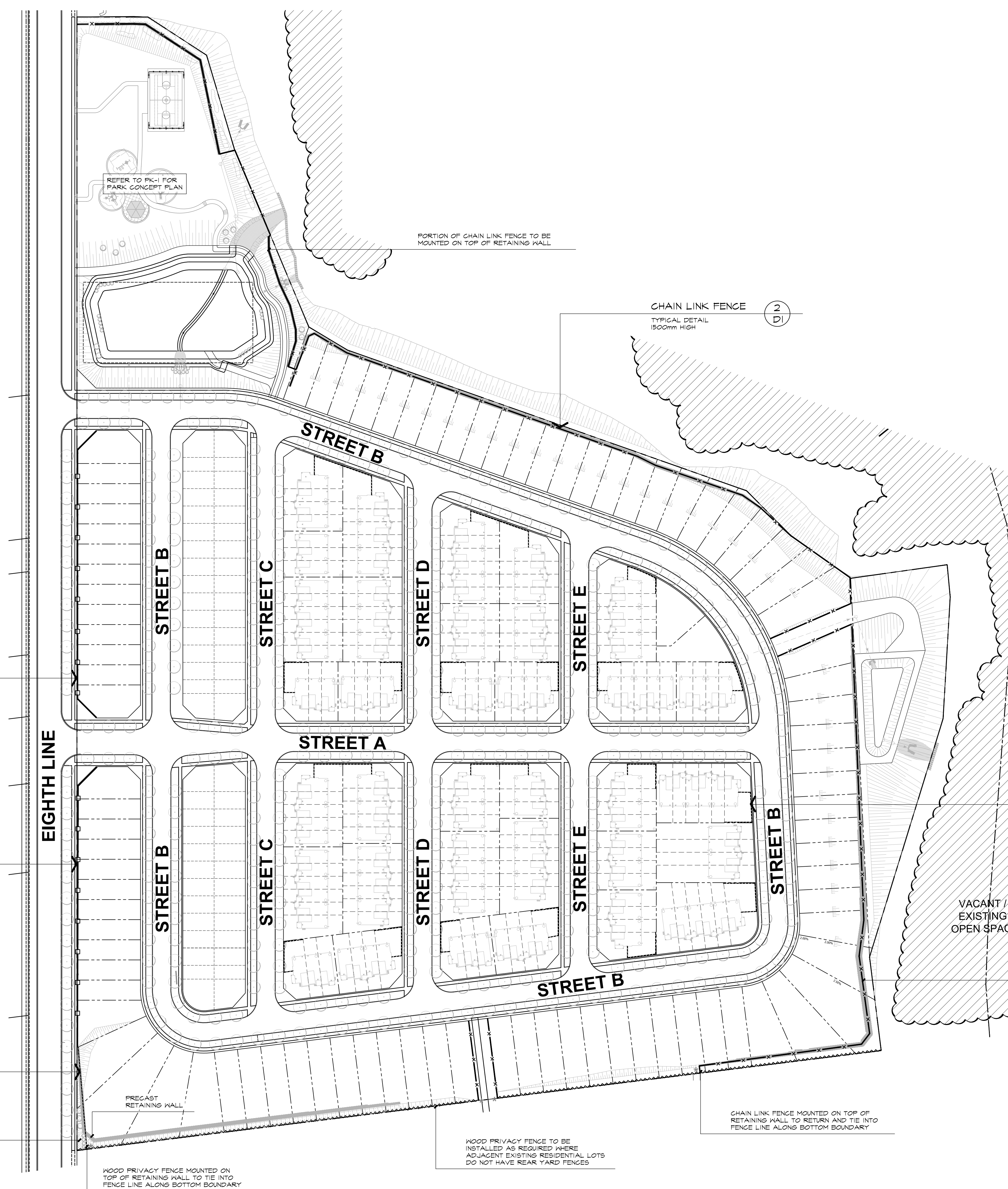
STREET C

STREET D

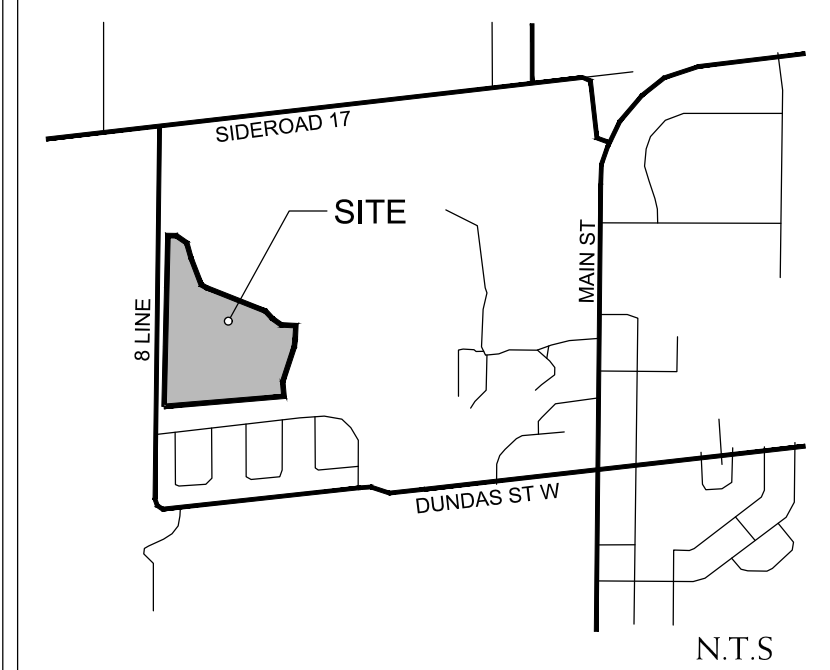
STREET E

STREET B

STREET B



KEY PLAN



LEGEND

- DECORATIVE METAL FENCE
- CHAIN LINK FENCE
- FENCE AS REQUIRED
- WOOD PRIVACY FENCE

BASE INFORMATION OBTAINED ELECTRONICALLY FROM ARMSTRONG PLANNING (JOB NO. 21.2842.00)

no.	date	version	by
1.	OCT 3 2023	ISSUED FOR DRAFT PLAN RESUBMISSION #3	MC/ED
0.	MAY 18 2022	ISSUED FOR DRAFT PLAN AND ZONING SUBMISSION #1	AV

All information hereon to be checked and verified at the site and any discrepancies must be reported to and clarified by the landscape architect before commencing work. All drawings, specifications, details, digital information, etc., prepared by the landscape architect are instruments of service and as such are his property and must be returned at his request.

MEMBER

ALEXANDER BUDREVICS
LANDSCAPE ARCHITECTS

855 Don Mills Road, Second Tower, Suite 212
Toronto, Ontario, Canada, M3C 1W3

416.444.5201

www.budrevics.com

project
ERIN SUBDIVISION
 5528 EIGHTH LINE
 ERIN, ONTARIO
 EC (ERIN) GP INC.
 drawing
OVERALL FENCING CONCEPT PLAN

date	DECEMBER 14, 2021	drawn	AV
scale*	1:1000	file	3528 F0 V1-231003
direction			
project no.			
sheet no.	F-0		

GENERAL FENCE NOTE:
 ALL FENCING TO LIE ENTIRELY ON PRIVATE PROPERTY INCLUDING FOOTINGS.

FENCING MATERIAL CHANGE NOTE:
 *WHERE DECORATIVE METAL FENCE AND WOOD FENCE / CHAIN LINK FENCE ADJUT, FENCE POSTS TO BE INSTALLED IN ONE CONCRETE FOOTING TO ELIMINATE GAPS BETWEEN FENCE MATERIAL CHANGES

3
 DI
DECORATIVE METAL FENCE
 TYPICAL DETAIL
 900mm HIGH
 OPENINGS IN FENCES TO BE PROVIDED FOR INDIVIDUAL TOWNHOUSES ACCESS TO SIDEWALK

3
 DI
DECORATIVE METAL FENCE
 TYPICAL DETAIL
 900mm HIGH
 OPENINGS IN FENCES TO BE PROVIDED FOR INDIVIDUAL TOWNHOUSES ACCESS TO SIDEWALK

1
 DI
WOOD PRIVACY FENCE
 TYPICAL DETAIL
 1800mm HIGH
 INSTALLED ON TOP OF RETAINING WALL

BUFFER PLANTING TO BE PROVIDED ALONG PORTION OF PRIVACY FENCE

2
 DI
CHAIN LINK FENCE
 TYPICAL DETAIL
 1500mm HIGH

1
 DI
WOOD PRIVACY FENCE
 TYPICAL DETAIL
 1800mm HIGH
 AT FLANKAGE OF ALL CORNER LOTS GATE/ OR GAP TO BE PROVIDED AGAINST BUILDING ENVELOPE AT RETURNS

VACANT / EXISTING OPEN SPACE

CHAIN LINK FENCE TO BE MOUNTED ON TOP OF RETAINING WALL

CHAIN LINK FENCE MOUNTED ON TOP OF RETAINING WALL TO RETURN AND TIE INTO FENCE LINE ALONG BOTTOM BOUNDARY

WOOD PRIVACY FENCE TO BE INSTALLED AS REQUIRED WHERE ADJACENT EXISTING RESIDENTIAL LOTS DO NOT HAVE REAR YARD FENCES

WOOD PRIVACY FENCE MOUNTED ON TOP OF RETAINING WALL TO TIE INTO FENCE LINE ALONG BOTTOM BOUNDARY

PRECAST RETAINING WALL

PORTION OF CHAIN LINK FENCE TO BE MOUNTED ON TOP OF RETAINING WALL

REFER TO PK-1 FOR PARK CONCEPT PLAN

EIGHTH LINE

STREET B

STREET C

STREET B

STREET D

STREET E

STREET A

STREET D

STREET E

STREET B

STREET B

*NOTED SCALE IS APPLICABLE ONLY WHEN PRINTED ON ARCH D (34"x36") SIZE SHEET

SEED MIXTURES:

ON SITE SEED MIXTURE:

LOCATION OF SEED TYPES ARE NOTED ON PLAN

SEED WITH THE FOLLOWING SEED MIXTURES AS SUPPLIED BY ONTARIO SEED COMPANY (1-800-465-5849) OR APPROVED SUBSTITUTE

ALL SEEDING TO BE APPLIED WITH NURSE CROP

NURSE CROP FOR ALL MIXES BELOW:

IS TO BE SELECTED, WHEN TIME OF CONSTRUCTION HAS BEEN DETERMINED, USING THE CVC COVER CROP SELECTION TOOL

SEED MIXTURE TYPE 1

[OSC CVC7] - UPLAND NATIVE MEADOW MIX

FOR SEEDING ALL DISTURBED AREAS WITHIN THE BUFFER AND IN THE STORMWATER MANAGEMENT BLOCK ABOVE THE FLAT BASIN.

REFER TO PLAN FOR LOCATIONS

TO BE APPLIED WITH NURSE CROP

UPLAND NATIVE MEADOW MIX: APPLIED AT A RATE OF 25 Kg/Ha

BLACK EYED SUSAN (<i>Rudbeckia hirta</i>)	10 %
BLUE WOOD (HEART LEAVED ASTER) (<i>Aster cordifolius</i>)	1 %
CANADA ANEMONE (<i>Anemone canadensis</i>)	1 %
CANADA GOLDENROD (<i>Solidago canadensis</i>)	2 %
COMMON MILKWEED (<i>Asclepias syriaca</i>)	2 %
EVENING PRIMROSE (<i>Oenothera biennis</i>)	25 %
GRASS LEAF GOLDENROD (<i>Euthamia graminifolia</i>)	1 %
MEADOW/OPEN FIELD SEDGE (<i>Carex granularis</i>)	15 %
NEW ENGLAND ASTER (<i>Aster novae-angliae</i>)	1 %
RIVERBANK WILD RYE (<i>Elymus riparius</i>)	40 %
VIRGINIA BOWER (<i>Clematis virginiana</i>)	1 %
WILD BERGAMOT (<i>Monarda fistulosa</i>)	1 %

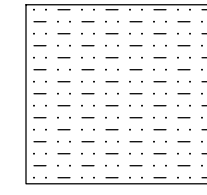
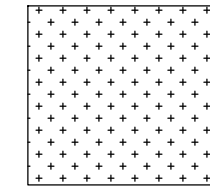
SEED MIXTURE TYPE 2

[OSC CVC3] - VALLEYLAND MIXTURE (SEMI MOIST)

FOR THE BOTTOM OF THE STORMWATER MANAGEMENT BLOCK AND THE BOTTOM OF THE OPEN SPACE BLOCK. REFER TO PLAN FOR LOCATIONS TO BE APPLIED WITH NURSE CROP

VALLEYLAND MIX: APPLIED AT A RATE OF 25 Kg/Ha

FOWL MANNA GRASS (<i>Glyceria striata</i>)	2 %
FOWL BLUEGRASS/ FOWL MEADOWGRASS (<i>Poa palustris</i>)	30 %
FOX SEDGE (<i>Carex vulpinoidea</i>)	30 %
PATH RUSH (<i>Juncus tenuis</i>)	8 %
VIRGINIA WILD RYE (<i>Elymus virginicus</i>)	30 %



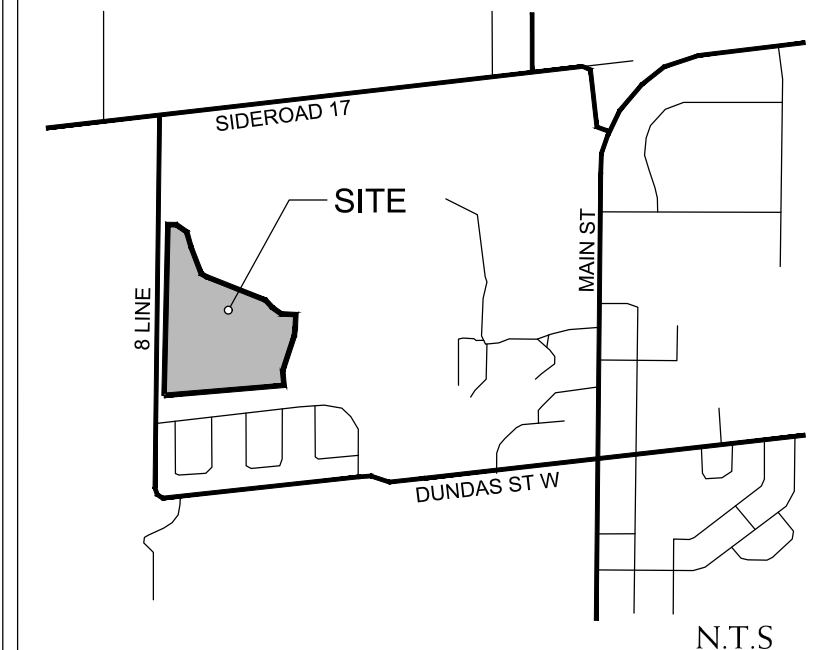
SUGGESTED BUFFER PLANT LIST

BLOCK AREA 1 & 2

ERIN MILLS SUBDIVISION - ABAL 3528

BOTANICAL NAME	COMMON NAME	GALIPER	HEIGHT	SPREAD	ROOT	REMARKS	SPACING
DECIDUOUS TREES							
ACER RUBRUM	RED MAPLE	45mm	3500mm	1500mm	W.B.	EQUAL FORM	5000mm
ACER RUBRUM	RED MAPLE	---	1500mm	---	5 GAL. POT.	---	5000mm
ACER SACCHARUM	SUGAR MAPLE	45mm	3500mm	1500mm	W.B.	EQUAL FORM	5000mm
ACER SACCHARUM	SUGAR MAPLE	---	1500mm	---	5 GAL. POT.	---	5000mm
BETULA PAPYRIFERA	PAPER BIRCH	45mm	3500mm	1500mm	W.B.	EQUAL FORM	5000mm
BETULA PAPYRIFERA	PAPER BIRCH	---	1500mm	---	5 GAL. POT.	---	5000mm
GARYA CORDIFORMIS	BITTERNUT HICKORY	45mm	3500mm	1500mm	W.B.	EQUAL FORM	5000mm
GARYA CORDIFORMIS	BITTERNUT HICKORY	---	1500mm	---	5 GAL. POT.	---	5000mm
FAGUS GRANDIFOLIA	AMERICAN BEECH	45mm	3500mm	1500mm	W.B.	EQUAL FORM	5000mm
FAGUS GRANDIFOLIA	AMERICAN BEECH	---	1500mm	---	5 GAL. POT.	---	5000mm
POPULUS BALSAMIFERA	BALSAM POPLAR	45mm	3500mm	1500mm	W.B.	EQUAL FORM	5000mm
POPULUS BALSAMIFERA	BALSAM POPLAR	---	1500mm	---	5 GAL. POT.	---	5000mm
POPULUS TREMULOIDES	TREMBLING ASPEN	45mm	3500mm	1500mm	W.B.	EQUAL FORM	5000mm
POPULUS TREMULOIDES	TREMBLING ASPEN	---	1500mm	---	5 GAL. POT.	---	5000mm
PRUNUS SEROTINA	BLACK CHERRY	45mm	3500mm	1500mm	W.B.	EQUAL FORM	5000mm
PRUNUS SEROTINA	BLACK CHERRY	---	1500mm	---	5 GAL. POT.	---	5000mm
QUERCUS RUBRA	NORTHERN RED OAK	45mm	3500mm	1500mm	W.B.	EQUAL FORM	5000mm
QUERCUS RUBRA	NORTHERN RED OAK	---	1500mm	---	5 GAL. POT.	---	5000mm
TILIA AMERICANA	AMERICAN BASSWOOD	45mm	3500mm	1500mm	W.B.	EQUAL FORM	5000mm
TILIA AMERICANA	AMERICAN BASSWOOD	---	1500mm	---	5 GAL. POT.	---	5000mm
CONIFEROUS TREES							
ABIES BALSAMEA	BALSAM FIR	---	1500mm	1000mm	B.B.C.	SPECIMEN	5000mm
ABIES BALSAMEA	BALSAM FIR	---	750mm	---	POTTED	---	5000mm
PICEA GLAUGA	WHITE SPRUCE	---	1500mm	1000mm	B.B.C.	SPECIMEN	5000mm
PICEA GLAUGA	WHITE SPRUCE	---	750mm	---	POTTED	---	5000mm
PINUS STROBUS	EASTERN WHITE PINE	---	1500mm	1000mm	B.B.C.	SPECIMEN	5000mm
PINUS STROBUS	EASTERN WHITE PINE	---	750mm	---	POTTED	---	5000mm
THUJA OCCIDENTALIS	EASTERN WHITE CEDAR	---	1500mm	1000mm	B.B.C.	SPECIMEN	5000mm
THUJA OCCIDENTALIS	EASTERN WHITE CEDAR	---	750mm	---	POTTED	---	5000mm
TSUGA CANADENSIS	EASTERN HEMLOCK	---	1500mm	1000mm	B.B.C.	SPECIMEN	5000mm
TSUGA CANADENSIS	EASTERN HEMLOCK	---	750mm	---	POTTED	---	5000mm
SHRUBS							
ACER SPICATUM	MOUNTAIN MAPLE	---	400mm	---	1 GAL. POT	---	1000mm
AMELANCHIER LAEVIS	ALLEGHENY SERVICEBERRY	---	400mm	---	1 GAL. POT	---	1000mm
CORNUS ALTERNIFOLIA	ALTERNATE-LEAVED DOGWOOD	---	400mm	---	1 GAL. POT	---	1000mm
CORNUS RACEMOSA	GRAY DOGWOOD	---	400mm	---	1 GAL. POT	---	1000mm
CORNUS SERICEA	RED-OSIER DOGWOOD	---	400mm	---	1 GAL. POT	---	1000mm
DIERVILLA LONICERA	NORTHERN BUSH HONEYSUCKLE	---	400mm	---	1 GAL. POT	---	1000mm
FRAXINUS VIRGINIANA	CHOKE CHERRY	---	400mm	---	1 GAL. POT	---	1000mm
RHUS TYPHINA	STASHORN SUMAC	---	400mm	---	1 GAL. POT	---	1000mm
RIBES AMERICANUM	WILD BLACK CURRANT	---	400mm	---	1 GAL. POT	---	1000mm
ROSA BLANDA	SMOOTH ROSE	---	---	---	1 GAL. POT	---	1000mm
RUBUS IDAEUS SSP. STRIGOSUS	WILD RED RASPBERRY	---	400mm	---	1 GAL. POT	---	1000mm
SALIX ERIOGEPHALA	HEART-LEAVED WILLOW	---	---	---	1 GAL. POT	---	1000mm
SALIX PETIOLARIS	MEADOW WILLOW	---	---	---	1 GAL. POT	---	1000mm
SAMBUCUS CANADENSIS	COMMON ELDERBERRY	---	400mm	---	1 GAL. POT	---	1000mm
VIBURNUM LENTAGO	NANNYBERRY	---	400mm	---	1 GAL. POT	---	1000mm

KEY PLAN



LEGEND



AREA 1 - SLOPE RESTORATION AND ENHANCEMENT PLANTING

TOTAL AREA = 18115 m²
100% COVERAGE
400 TREES
8,115 SHRUBS

AREA 3 - STORMWATER MANAGEMENT BLOCK

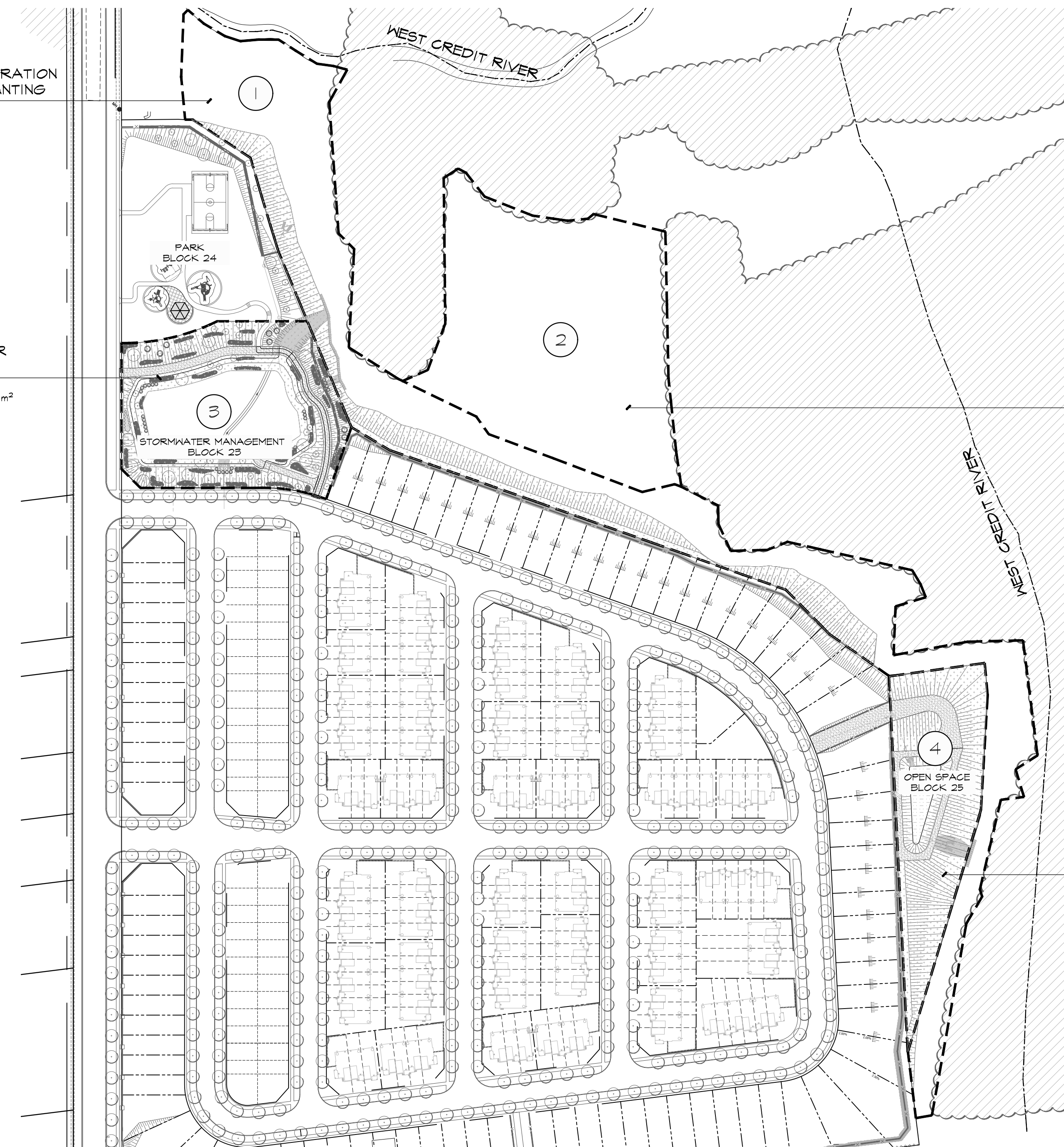
TOTAL BLOCK AREA = 1650 m²
TOTAL PLANTABLE AREA = 4217 m²
100% COVERAGE
80 TREES
2,220 SHRUBS

AREA 2 - ENHANCEMENT AREA

TOTAL AREA = 12800 m²
50% COVERAGE
125 TREES
3,215 SHRUBS

AREA 4 - OPEN SPACE BLOCK

TOTAL PLANTABLE AREA = 5310 m²
SEED MIX ONLY



SUGGESTED STORMWATER MANAGEMENT BLOCK PLANT LIST

BLOCK AREA 3

ERIN MILLS SUBDIVISION - ABAL 3528

BOTANICAL NAME	COMMON NAME	GALIPER	HEIGHT	SPREAD	ROOT	REMARKS	SPACING
DECIDUOUS TREES							
ACER RUBRUM	RED MAPLE	45mm	3500mm	1500mm	W.B.	EQUAL FORM	5000mm
ACER RUBRUM	RED MAPLE	---	1500mm	---	5 GAL. POT.	---	5000mm
ACER SACCHARUM	SUGAR MAPLE	45mm	3500mm	1500mm	W.B.	EQUAL FORM	5000mm
ACER SACCHARUM	SUGAR MAPLE	---	1500mm	---	5 GAL. POT.	---	5000mm
BETULA PAPYRIFERA	PAPER BIRCH	45mm	3500mm	1500mm	W.B.	EQUAL FORM	5000mm
BETULA PAPYRIFERA	PAPER BIRCH	---	1500mm	---	5 GAL. POT.	---	5000mm
POPULUS BALSAMIFERA	BALSAM POPLAR	45mm	3500mm	1500mm	W.B.	EQUAL FORM	5000mm
POPULUS BALSAMIFERA	BALSAM POPLAR	---	1500mm	---	5 GAL. POT.	---	5000mm
POPULUS TREMULOIDES	TREMBLING ASPEN	45mm	3500mm	1500mm	W.B.	EQUAL FORM	5000mm
POPULUS TREMULOIDES	TREMBLING ASPEN	---	1500mm	---	5 GAL. POT.	---	5000mm
PRUNUS SEROTINA	BLACK CHERRY	45mm	3500mm	1500mm	W.B.	EQUAL FORM	5000mm
PRUNUS SEROTINA	BLACK CHERRY	---	1500mm	---	5 GAL. POT.	---	5000mm
QUERCUS RUBRA	NORTHERN RED OAK	45mm	3500mm	1500mm	W.B.	EQUAL FORM	5000mm
QUERCUS RUBRA	NORTHERN RED OAK	---	1500mm	---	5 GAL. POT.	---	5000mm
SALIX AMYGDALOIDES	PEACH-LEAVED WILLOW	45mm	3500mm	1500mm	W.B.	EQUAL FORM	5000mm
SALIX AMYGDALOIDES	PEACH-LEAVED WILLOW	---	1500mm	---	5 GAL. POT.	---	5000mm
TILIA AMERICANA	AMERICAN BASSWOOD	45mm	3500mm	1500mm	W.B.	EQUAL FORM	5000mm
TILIA AMERICANA	AMERICAN BASSWOOD	---	1500mm	---	5 GAL. POT.	---	5000mm
CONIFEROUS TREES							
PICEA GLAUGA	WHITE SPRUCE	---	1500mm	1000mm	B.B.C.	SPECIMEN	5000mm
PICEA GLAUGA	WHITE SPRUCE	---	750mm	---	POTTED	---	5000mm
PINUS STROBUS	EASTERN WHITE PINE	---	1500mm	1000mm	B.B.C.	SPECIMEN	5000mm
PINUS STROBUS	EASTERN WHITE PINE	---	750mm	---	POTTED	---	5000mm
THUJA OCCIDENTALIS	EASTERN WHITE CEDAR	---	1500mm	1000mm	B.B.C.	SPECIMEN	5000mm
THUJA OCCIDENTALIS	EASTERN WHITE CEDAR	---	750mm	---	POTTED	---	5000mm
SHRUBS							
AMELANCHIER LAEVIS	ALLEGHENY SERVICEBERRY	---	400mm	---	1 GAL. POT	---	1000mm
CORNUS RACEMOSA	GRAY DOGWOOD	---	400mm	---	1 GAL. POT	---	1000mm
CORNUS SERICEA	RED-OSIER DOGWOOD	---	400mm	---	1 GAL. POT	---	1000mm
DIERVILLA LONICERA	NORTHERN BUSH HONEYSUCKLE	---	400mm	---	1 GAL. POT	---	1000mm
RHUS TYPHINA	STASHORN SUMAC	---	400mm	---	1 GAL. POT	---	1000mm
ROSA BLANDA	SMOOTH ROSE	---	---	---	1 GAL. POT	---	1000mm
RUBUS IDAEUS SSP. STRIGOSUS	WILD RED RASPBERRY	---	400mm	---	1 GAL. POT	---	1000mm
SALIX DISCOLOR	PUSSY WILLOW	---	400mm	---	1 GAL. POT	---	1000mm
SALIX ERIOGEPHALA	HEART-LEAVED WILLOW	---	---	---	1 GAL. POT	---	1000mm
SALIX PETIOLARIS	MEADOW WILLOW	---	---	---	1 GAL. POT	---	1000mm
SAMBUCUS CANADENSIS	COMMON ELDERBERRY	---	400mm	---	1 GAL. POT	---	1000mm
SPIRAEA ALBA	WHITE MEADOWSWEET	---	---	---	1 GAL. POT	---	1000mm
VIBURNUM LENTAGO	NANNYBERRY	---	400mm	---	1 GAL. POT	---	1000mm

BASE INFORMATION OBTAINED ELECTRONICALLY FROM ARMSTRONG PLANNING (JOB NO. 21.2842.00)

1.	OCT 3 2023	ISSUED FOR DRAFT PLAN RESUBMISSION #2	MC/ED
0.	MAY 18 2022	ISSUED FOR DRAFT PLAN AND ZONING SUBMISSION #1	AV
no.	date	version	by

All information hereon to be checked and verified at the site and any discrepancies must be reported to and clarified by the landscape architect before commencing work. All drawings, specifications, details, digital information, etc., prepared by the landscape architect are instruments of service and as such are his property and must be returned at his request.

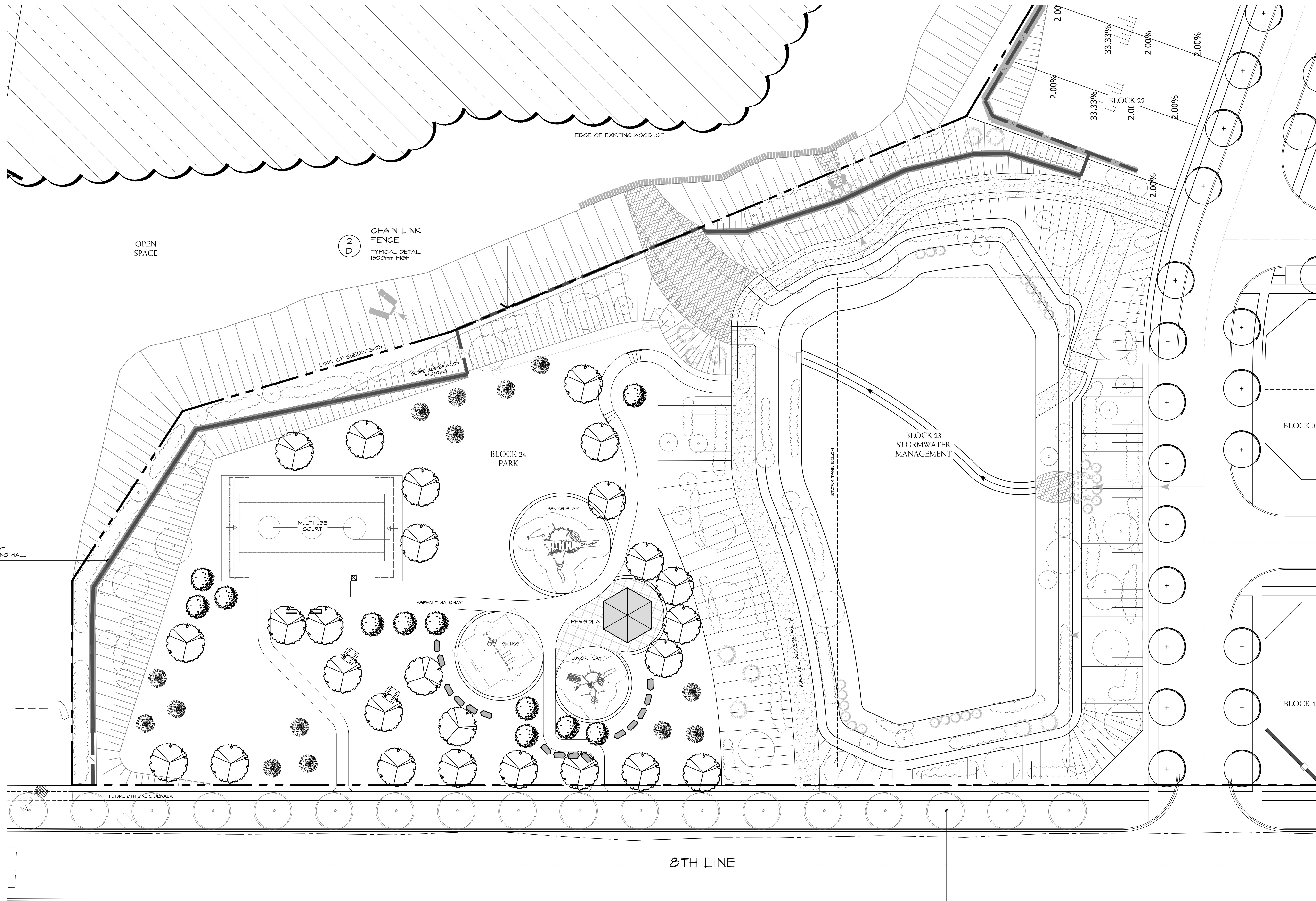
ALEXANDER BUDREVICS ARCHITECTS
415 SOCIETY STREET #1111
LANDSCAPE ARCHITECTS
885 Don Mills Road, Second Tower, Suite 212
Toronto, Ontario, Canada, M3C 1W3
416.444.5201
www.budrevics.com

project
ERIN SUBDIVISION
5528 EIGHTH LINE
ERIN, ONTARIO
EC (ERIN) GP INC.

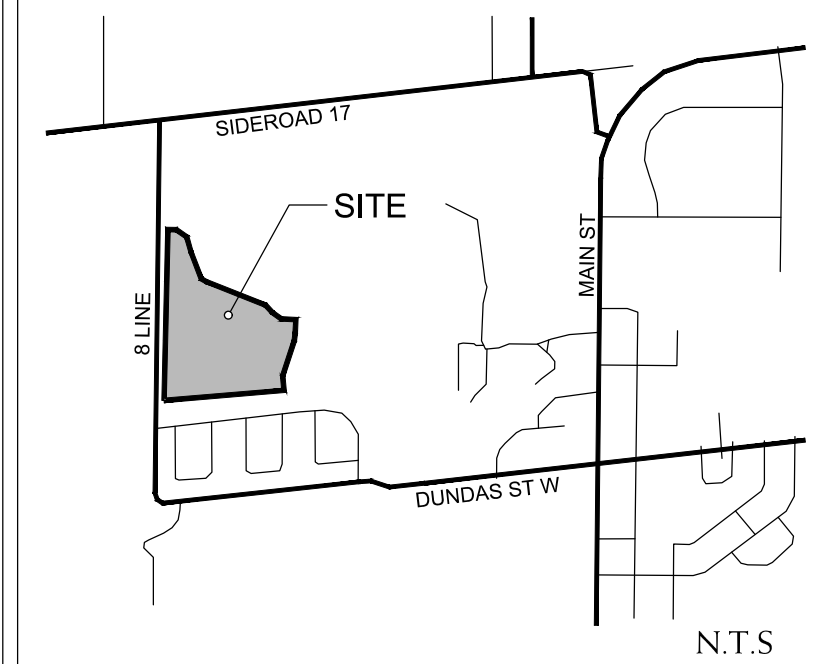
OVERALL CONCEPTUAL NATURALIZATION PLAN

date	DECEMBER 14, 2021	drawn	AV
scale*	1:1500	file	3528 Lo V1-231003
direction			
project no.	3528		
sheet no.	L-0		

*NOTED SCALE IS APPLICABLE ONLY WHEN PRINTED ON ARCH D (34"x36") SIZE SHEET



KEY PLAN ✂



LEGEND

- PARK DECIDUOUS TREE
- PARK ORNAMENTAL TREE
- PARK CONIFEROUS TREE
- NATURALIZATION DECIDUOUS TREES
- NATURALIZATION CONIFEROUS TREE
- NATURALIZATION SHRUB PLANTING
- ROCKERY STONE
- PARK FURNISHINGS
- RETAINING WALL
- RAILING
- DECORATIVE METAL FENCE (REFER TO FENCING PLAN F-0)
- CHAIN LINK FENCE (REFER TO FENCING PLAN F-0)

BASE INFORMATION OBTAINED ELECTRONICALLY FROM URBANTECH CONSULTING (JOB NO. 21-684; TEL. 905-946-9461)

no.	date	version	by
1.	OCT 3 2023	ISSUED FOR DRAFT PLAN RESUBMISSION #2	MC/ED
0.	MAY 18 2022	ISSUED FOR DRAFT PLAN AND ZONING SUBMISSION #1	AV

All information hereon to be checked and verified at the site and any discrepancies must be reported to and clarified by the landscape architect before commencing work. All drawings, specifications, details, digital information, etc., prepared by the landscape architect are instruments of service and as such are his property and must be returned at his request.

ALEXANDER BUDREVICS
LANDSCAPE ARCHITECTS

855 Don Mills Road, Second Tower, Suite 212
Toronto, Ontario, Canada, M3C 1W3
416.444.5201
www.budrevics.com

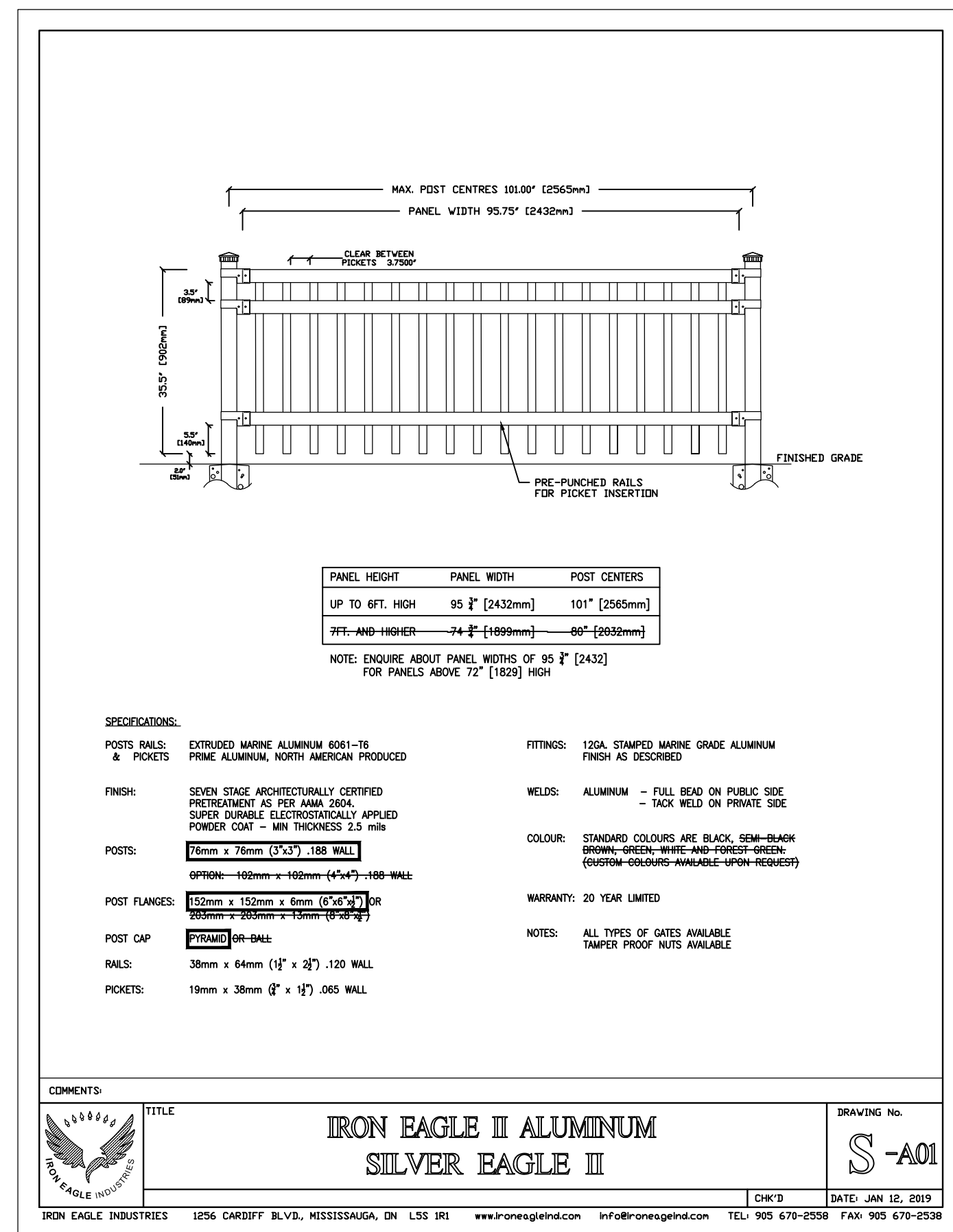
MEMBER
ASSOCIATION OF LANDSCAPE ARCHITECTS
ONTARIO

project
ERIN SUBDIVISION
 5528 EIGHTH LINE
 ERIN, ONTARIO
 EC (ERIN) GP INC.
 drawing

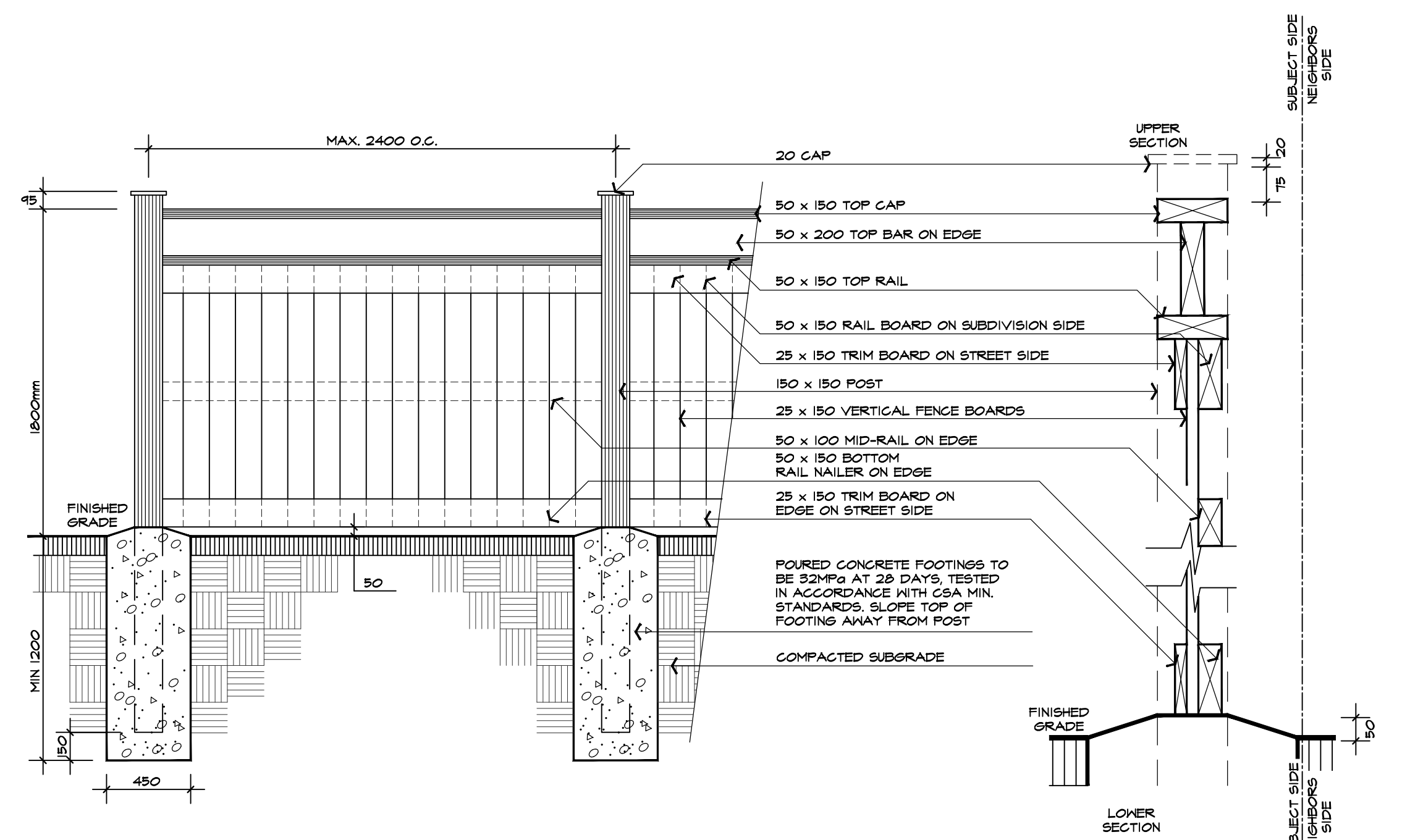
PARK LANDSCAPE CONCEPT PLAN

date	DECEMBER 14, 2021	drawn	AV
scale*	1:300	file	3528 Lo V1-231003
direction		project no.	3528
		sheet no.	PK-1

*NOTED SCALE IS APPLICABLE ONLY WHEN PRINTED ON ARCH D (34"x36") SIZE SHEET



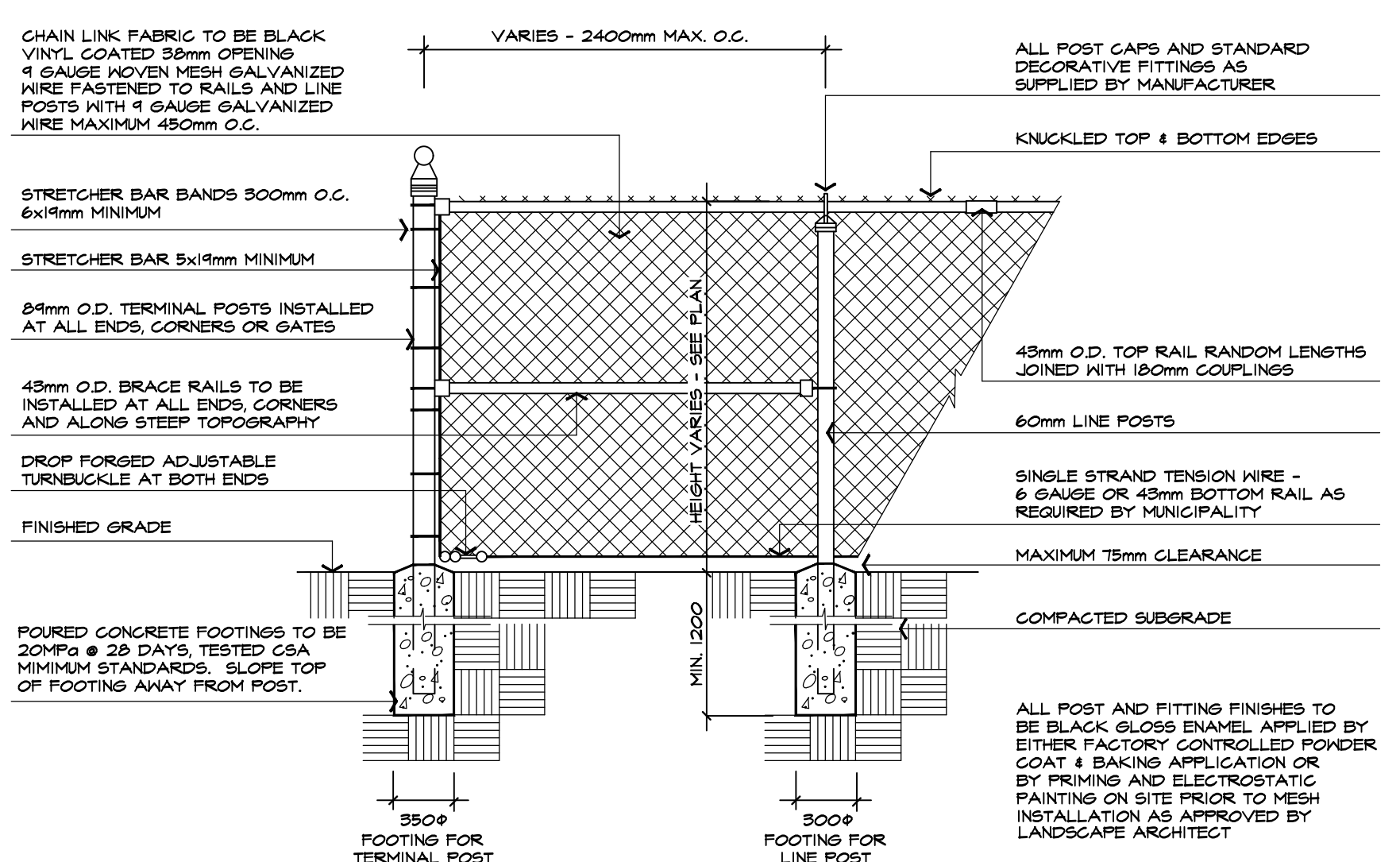
3 METAL FENCE DETAIL
 TO BE INSTALLED AS PER MANUFACTURER'S INSTRUCTIONS NTS
 MANUFACTURER: IRON EAGLE INDUSTRIES (905-670-2556)
 HEIGHT: 900mm
 PRODUCT: IRON EAGLE II SILVER EAGLE II
 COLOUR: BLACK TO BE DETERMINED
 OR APPROVED EQUAL



FENCE ELEVATION (FROM STREET SIDE) SCALE: 1:25
 FENCE VERTICAL SECTION SCALE: 1:10
 FENCE PLAN SECTION SCALE: 1:20

GENERAL NOTES
 1. USE NO. 1 GRADE CEDAR OR PRESSURE TREATED RED PINE, JACK PINE OR APPROVED EQUAL WOOD, FREE OF BENDS, LARGE KNOTS, HOLES, AND WARPING.
 2. APPLY TWO COATS OF STAIN, COLOUR TO BE APPROVED BY OWNER.
 3. ALL LUMBER DIMENSIONS ARE NOMINAL.
 4. SECURE ALL LUMBER WITH GALVANIZED NAILS.
 5. TOE NAIL ALL RAILS WITH TWO NAILS ON EACH END.
 6. ALL FENCE FOOTINGS TO BE ENTIRELY LOCATED ON TOWNHOUSE SIDE.

1 WOODEN PRIVACY FENCE DETAIL
 TYPICAL INSTALLATION ABAL F308-210107



2 CHAIN LINK FENCE DETAIL
 TYPICAL INSTALLATION NTS
 ABAL F101-440514

1.	OCT 3 2023	ISSUED FOR DRAFT PLAN RESUBMISSION #3	MC/ED
0.	MAY 18 2022	ISSUED FOR DRAFT PLAN AND ZONING SUBMISSION #1	AV
no.	date	version	by

All information hereon to be checked and verified at the site and any discrepancies must be reported to and clarified by the landscape architect before commencing work. All drawings, specifications, details, digital information, etc., prepared by the landscape architect are instruments of service and as such are his property and must be returned at his request.

ALEXANDER BUDREVICS & ASSOCIATES LIMITED LANDSCAPE ARCHITECTS
 885 Don Mills Road, Second Tower, Suite 212 Toronto, Ontario, Canada, M3C 1W3
 416.444.5201
 www.budrevics.com

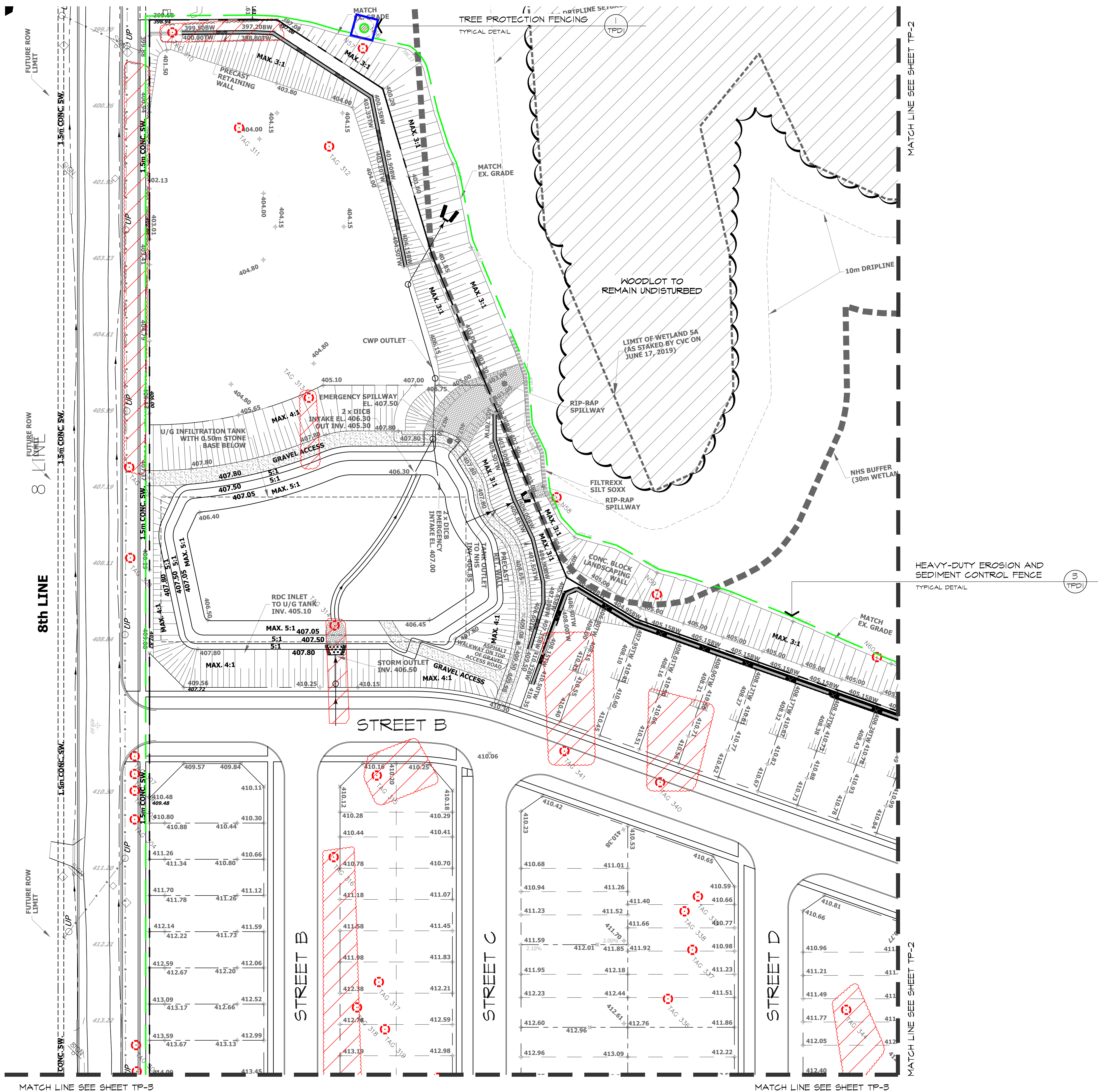
ONTARIO ASSOCIATION OF LANDSCAPE ARCHITECTS
 MEMBER
 MONICA E. CLARKE

project
ERIN SUBDIVISION
 5528 EIGHTH LINE
 ERIN, ONTARIO
 EC (ERIN) GP INC.
 drawing

FENCE DETAILS

date	DECEMBER 14, 2021	drawn	AV
scale*	AS SHOWN	file	3528 D1 V1-231003
direction		project no.	3528
		sheet no.	D1

*NOTED SCALE IS APPLICABLE ONLY WHEN PRINTED ON ARCH D (34"x36") SIZE SHEET



LEGEND

- EXISTING TREES TO REMAIN
- TREE PROTECTION ZONE
- EXISTING TREE TO REMOVE (DECIDUOUS / CONIFEROUS)
- AREA OF EXISTING TREES TO REMOVE (DECIDUOUS / CONIFEROUS)
- TREE PROTECTION FENCE
- TREE PROTECTION SIGN
- HEAVY-DUTY EROSION AND SEDIMENT CONTROL FENCE

NOTE:
 TO BE READ IN CONJUNCTION WITH ARBORIST REPORT AND TREE PROTECTION PLAN BY CANOPY CONSULTING REVISED ON OCTOBER 2, 2023, AS WELL AS THE EIS REPORT BY WSP DATED MAY 2022.

BASE INFORMATION OBTAINED ELECTRONICALLY FROM ARMSTRONG PLANNING (JOB NO. 21.2842.00)

no.	date	version	by
1.	OCT 3 2023	ISSUED FOR DRAFT PLAN RESUBMISSION #2	MC/ED
0.	MAY 18 2022	ISSUED FOR DRAFT PLAN AND ZONING SUBMISSION #1	AV

All information hereon to be checked and verified at the site and any discrepancies must be reported to and clarified by the landscape architect before commencing work. All drawings, specifications, details, digital information, etc., prepared by the landscape architect are instruments of service and as such are his property and must be returned at his request.

ALEXANDER BUDREVICS
 LANDSCAPE ARCHITECTS
 856 Don Mills Road, Second Tower, Suite 212
 Toronto, Ontario, Canada, M3C 1W3
 416.444.5201
 www.budrevics.com

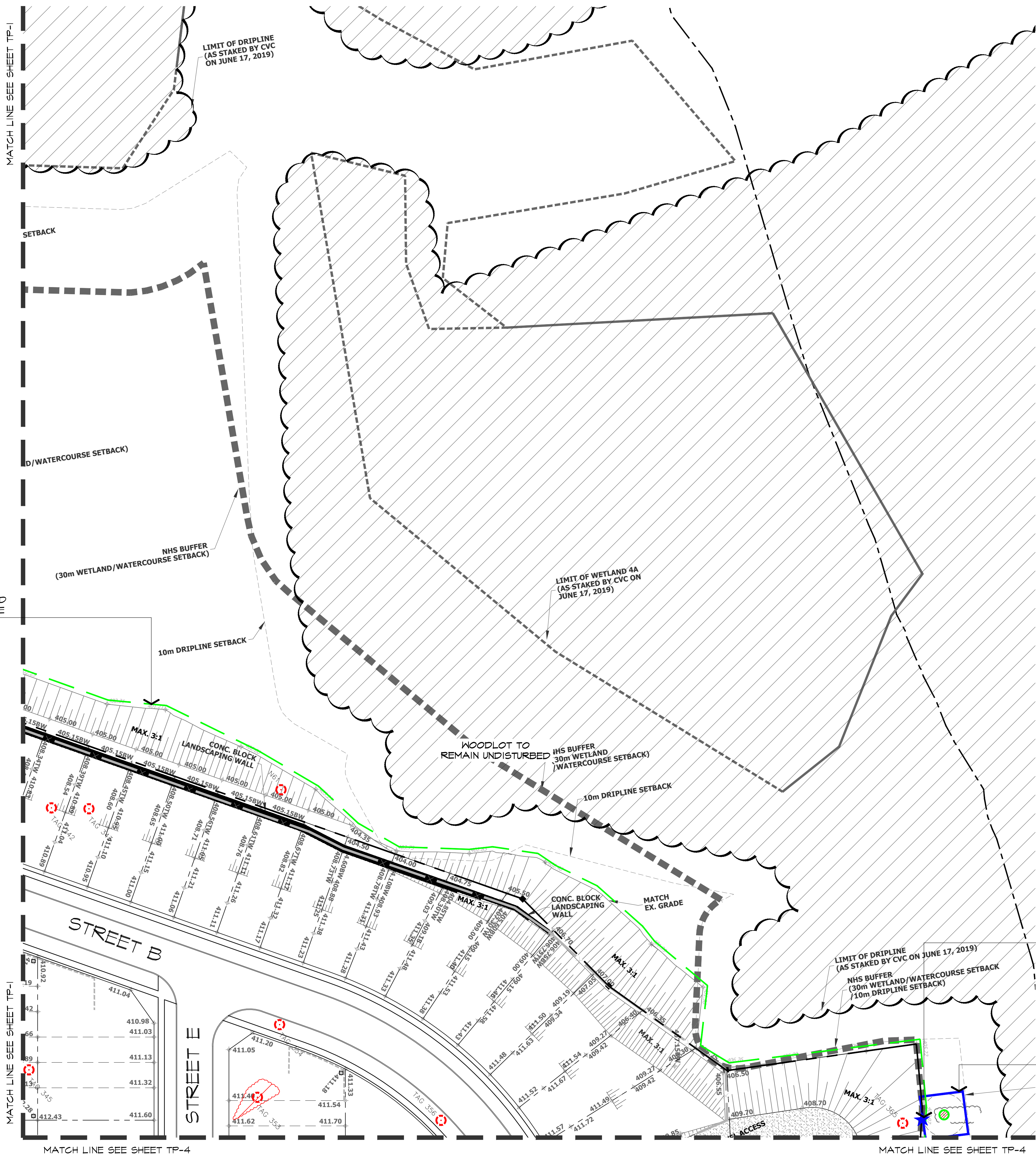
project
ERIN SUBDIVISION
 5528 EIGHTH LINE
 ERIN, ONTARIO
 EC (ERIN) GP INC.

drawing
TREE PROTECTION AND REMOVALS / EROSION CONTROL PLAN

date	DECEMBER 14, 2021	drawn	AV
scale	1:500	file	3528 TP1 V1-231003

direction		project no.	3528
		sheet no.	TP-1

*NOTED SCALE IS APPLICABLE ONLY WHEN PRINTED ON ARCH D (34"x36") SIZE SHEET

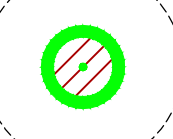
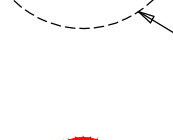


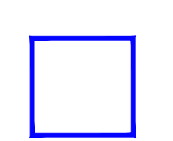




3
TPDI
HEAVY-DUTY EROSION AND SEDIMENT CONTROL FENCE
TYPICAL DETAIL

2
TPDI
TREE PROTECTION SIGN
TYPICAL DETAIL

1
TPDI
TREE PROTECTION FENCING
TYPICAL DETAIL

LEGEND

-  EXISTING TREES TO REMAIN
-  TREE PROTECTION ZONE
-  EXISTING TREE TO REMOVE (DECIDUOUS / CONIFEROUS)
-  AREA OF EXISTING TREES TO REMOVE (DECIDUOUS / CONIFEROUS)
-  TREE PROTECTION FENCE
-  TREE PROTECTION SIGN
-  HEAVY-DUTY EROSION AND SEDIMENT CONTROL FENCE

NOTE:
TO BE READ IN CONJUNCTION WITH ARBORIST REPORT AND TREE PROTECTION PLAN BY CANOPY CONSULTING REVISED ON OCTOBER 2, 2023, AS WELL AS THE EIS REPORT BY WSP DATED MAY 2022.

BASE INFORMATION OBTAINED ELECTRONICALLY FROM ARMSTRONG PLANNING (JOB NO. 21.2842.00)

no.	date	version	by
1.	OCT 3 2023	ISSUED FOR DRAFT PLAN RESUBMISSION #2	MC/ED
0.	MAY 18 2022	ISSUED FOR DRAFT PLAN AND ZONING SUBMISSION #1	AV

All information hereon to be checked and verified at the site and any discrepancies must be reported to and clarified by the landscape architect before commencing work. All drawings, specifications, details, digital information, etc., prepared by the landscape architect are instruments of service and as such are his property and must be returned at his request.



MONICA E. CLARKE
MEMBER
OALA
ONTARIO ASSOCIATION OF LANDSCAPE ARCHITECTS

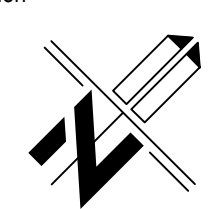


ALEXANDER BUDREVICS
LANDSCAPE ARCHITECTS
895 Don Mills Road, Second Tower, Suite 212
Toronto, Ontario, Canada, M3C 1W3
416.444.5201
www.budrevics.com

project
ERIN SUBDIVISION
5528 EIGHTH LINE
ERIN, ONTARIO
EC (ERIN) GP INC.

drawing
TREE PROTECTION AND REMOVALS / EROSION CONTROL PLAN

date DECEMBER 14, 2021 drawn AV
scale* 1:500 file 3528 TP2 V1-231003

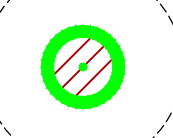

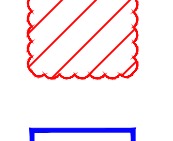




direction  project no. 3528
sheet no. TP-2

*NOTED SCALE IS APPLICABLE ONLY WHEN PRINTED ON ARCH D (34"x36") SIZE SHEET

MATCH LINE SEE SHEET TP-1

MATCH LINE SEE SHEET TP-1

LEGEND

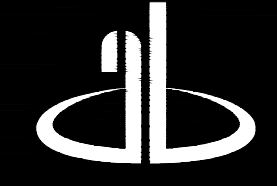
-  EXISTING TREES TO REMAIN
-  TREE PROTECTION ZONE
-  EXISTING TREE TO REMOVE (DECIDUOUS / CONIFEROUS)
-  AREA OF EXISTING TREES TO REMOVE (DECIDUOUS / CONIFEROUS)
-  TREE PROTECTION FENCE
-  TREE PROTECTION SIGN
-  HEAVY-DUTY EROSION AND SEDIMENT CONTROL FENCE

NOTE:
TO BE READ IN CONJUNCTION WITH ARBORIST REPORT AND TREE PROTECTION PLAN BY CANOPY CONSULTING REVISED ON OCTOBER 2, 2023, AS WELL AS THE EIS REPORT BY WSP DATED MAY 2022.

BASE INFORMATION OBTAINED ELECTRONICALLY FROM ARMSTRONG PLANNING (JOB NO. 21.2842.00)

no.	date	version	by
1.	OCT 3 2023	ISSUED FOR DRAFT PLAN RESUBMISSION #3	MC/ED
0.	MAY 18 2022	ISSUED FOR DRAFT PLAN AND ZONING SUBMISSION #1	AV


All information hereon to be checked and verified at the site and any discrepancies must be reported to and clarified by the landscape architect before commencing work. All drawings, specifications, details, digital information, etc., prepared by the landscape architect are instruments of service and as such are his property and must be returned at his request.



ALEXANDER BUDREVICS
LANDSCAPE ARCHITECTS

886 Don Mills Road, Second Tower, Suite 212
Toronto, Ontario, Canada, M3C 1W3
416.444.5201

www.budrevics.com

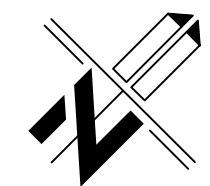


MEMBER
ONTIARIO ASSOCIATION OF LANDSCAPE ARCHITECTS

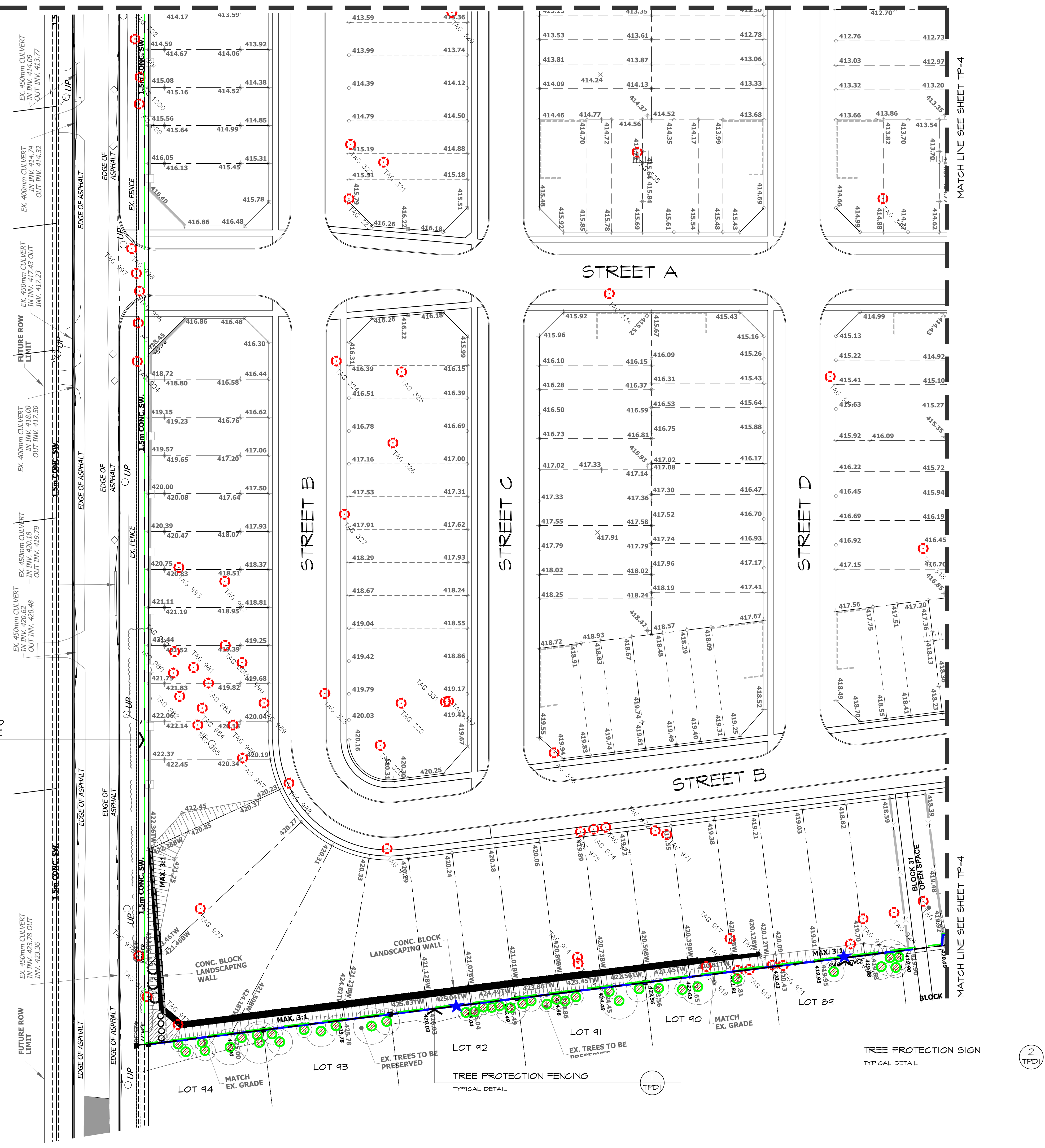
project
ERIN SUBDIVISION
5528 EIGHTH LINE
ERIN, ONTARIO
EC (ERIN) GP INC.

drawing
TREE PROTECTION AND REMOVALS / EROSION CONTROL PLAN

date	DECEMBER 14, 2021	drawn	AV
scale*	1:500	file	3528 TP3 V1-231003

direction		project no.	3528
		sheet no.	TP-3

3
TPD
HEAVY-DUTY EROSION AND SEDIMENT CONTROL FENCE
TYPICAL DETAIL



*NOTED SCALE IS APPLICABLE ONLY WHEN PRINTED ON ARCH D (34"x36") SIZE SHEET



LEGEND

- EXISTING TREES TO REMAIN
- TREE PROTECTION ZONE
- EXISTING TREE TO REMOVE (DECIDUOUS / CONIFEROUS)
- AREA OF EXISTING TREES TO REMOVE (DECIDUOUS / CONIFEROUS)
- TREE PROTECTION FENCE
- TREE PROTECTION SIGN
- HEAVY-DUTY EROSION AND SEDIMENT CONTROL FENCE

NOTE:
 TO BE READ IN CONJUNCTION WITH ARBORIST REPORT AND TREE PROTECTION PLAN BY CANOPY CONSULTING REVISED ON OCTOBER 2, 2023, AS WELL AS THE EIS REPORT BY WSP DATED MAY 2022.

BASE INFORMATION OBTAINED ELECTRONICALLY FROM ARMSTRONG PLANNING (JOB NO. 21.2842.00)

no.	date	version	by
1.	OCT 3 2023	ISSUED FOR DRAFT PLAN RESUBMISSION #2	MC/ED
0.	MAY 18 2022	ISSUED FOR DRAFT PLAN AND ZONING SUBMISSION #1	AV

All information hereon to be checked and verified at the site and any discrepancies must be reported to and clarified by the landscape architect before commencing work. All drawings, specifications, details, digital information, etc., prepared by the landscape architect are instruments of service and as such are his property and must be returned at his request.

MEMBER

ALEXANDER BUDREVICS
 LANDSCAPE ARCHITECTS

895 Don Mills Road, Second Tower, Suite 212
 Toronto, Ontario, Canada, M3C 1W3
 416.444.5201

www.budrevics.com

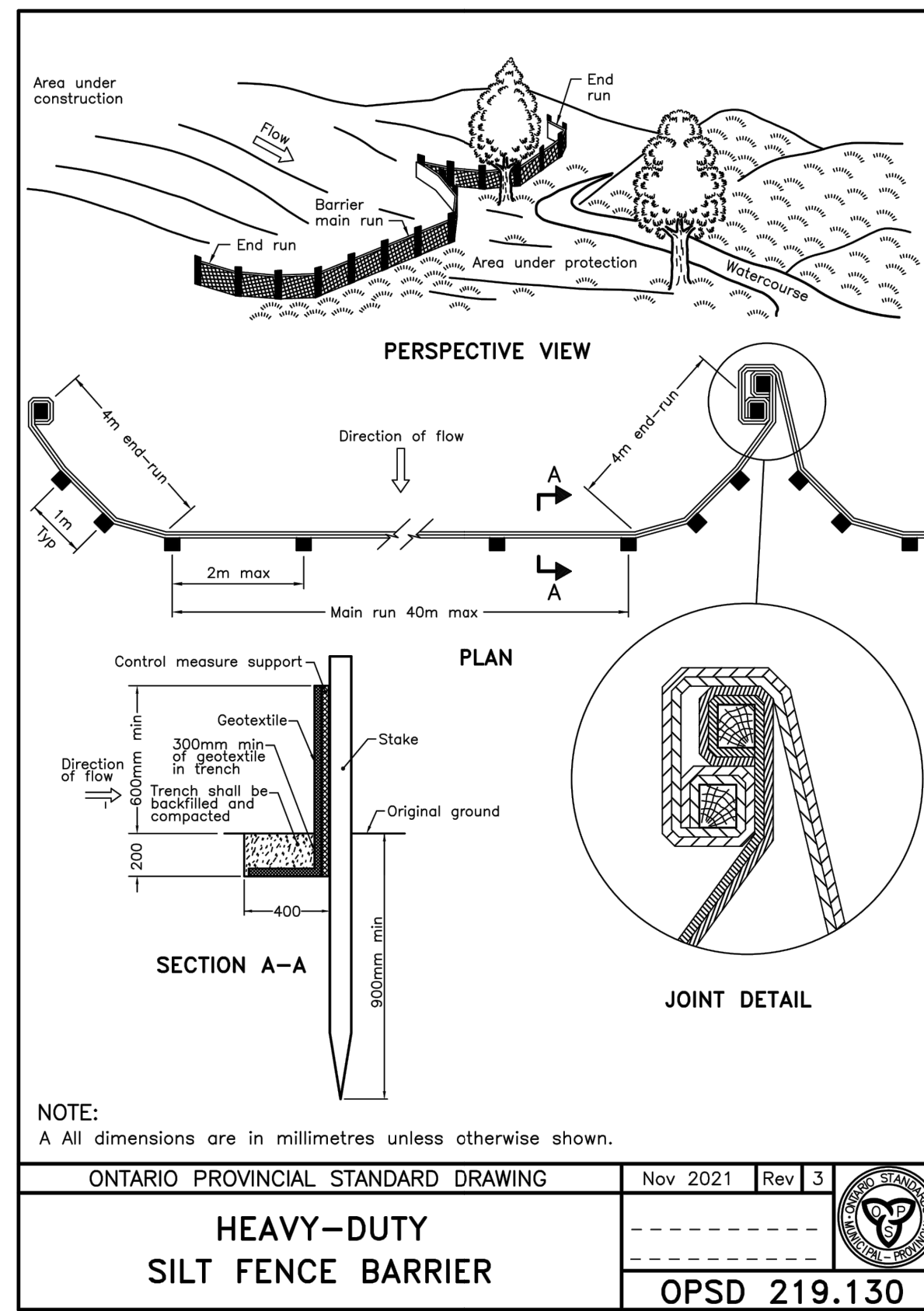
project
ERIN SUBDIVISION
 5528 EIGHTH LINE
 ERIN, ONTARIO
 EC (ERIN) GP INC.

drawing
TREE PROTECTION AND REMOVALS / EROSION CONTROL PLAN

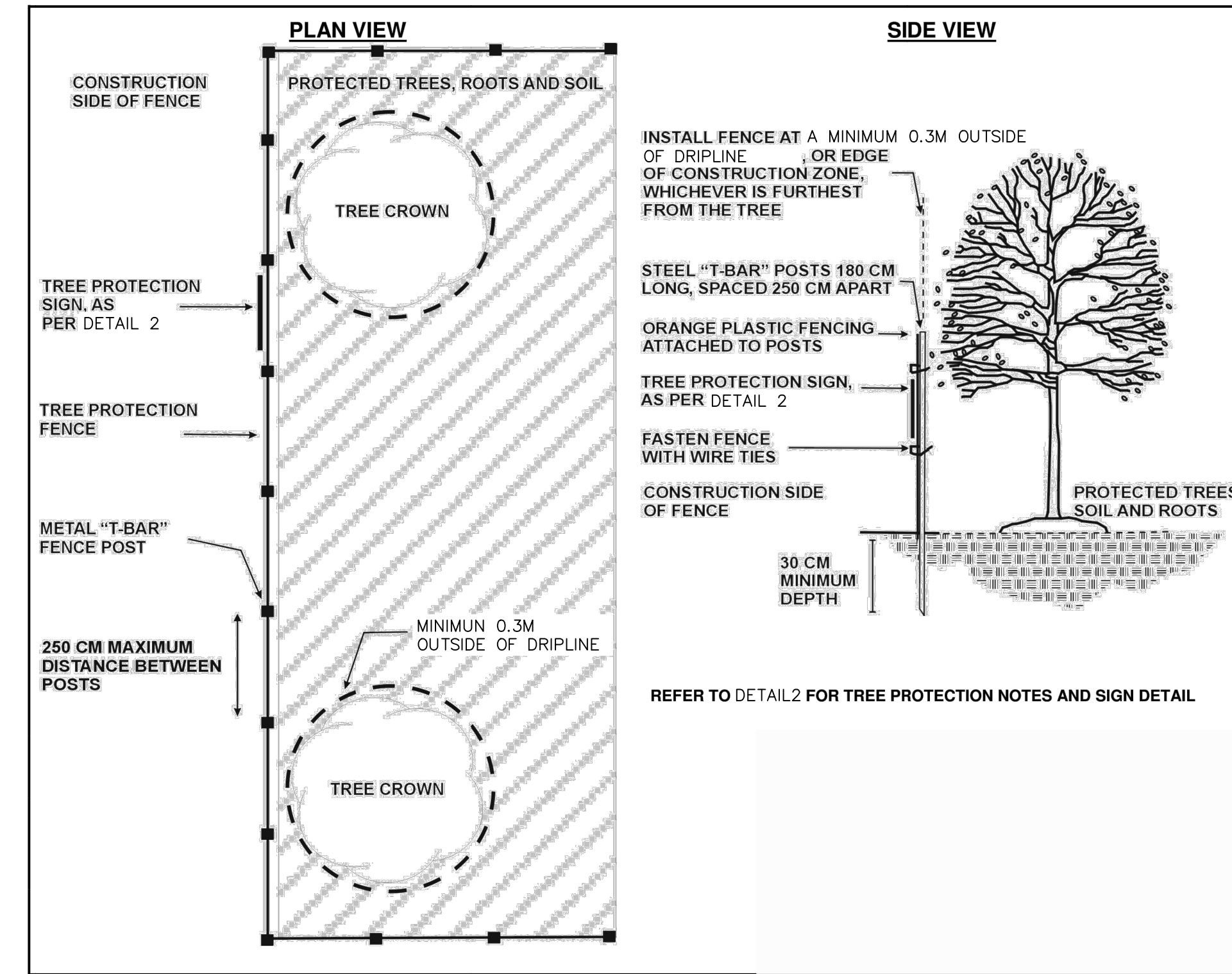
date	DECEMBER 14, 2021	drawn	AV
scale*	1:500	file	3528 TP4 V1-231003

	project no.	3528
	sheet no.	TP-4

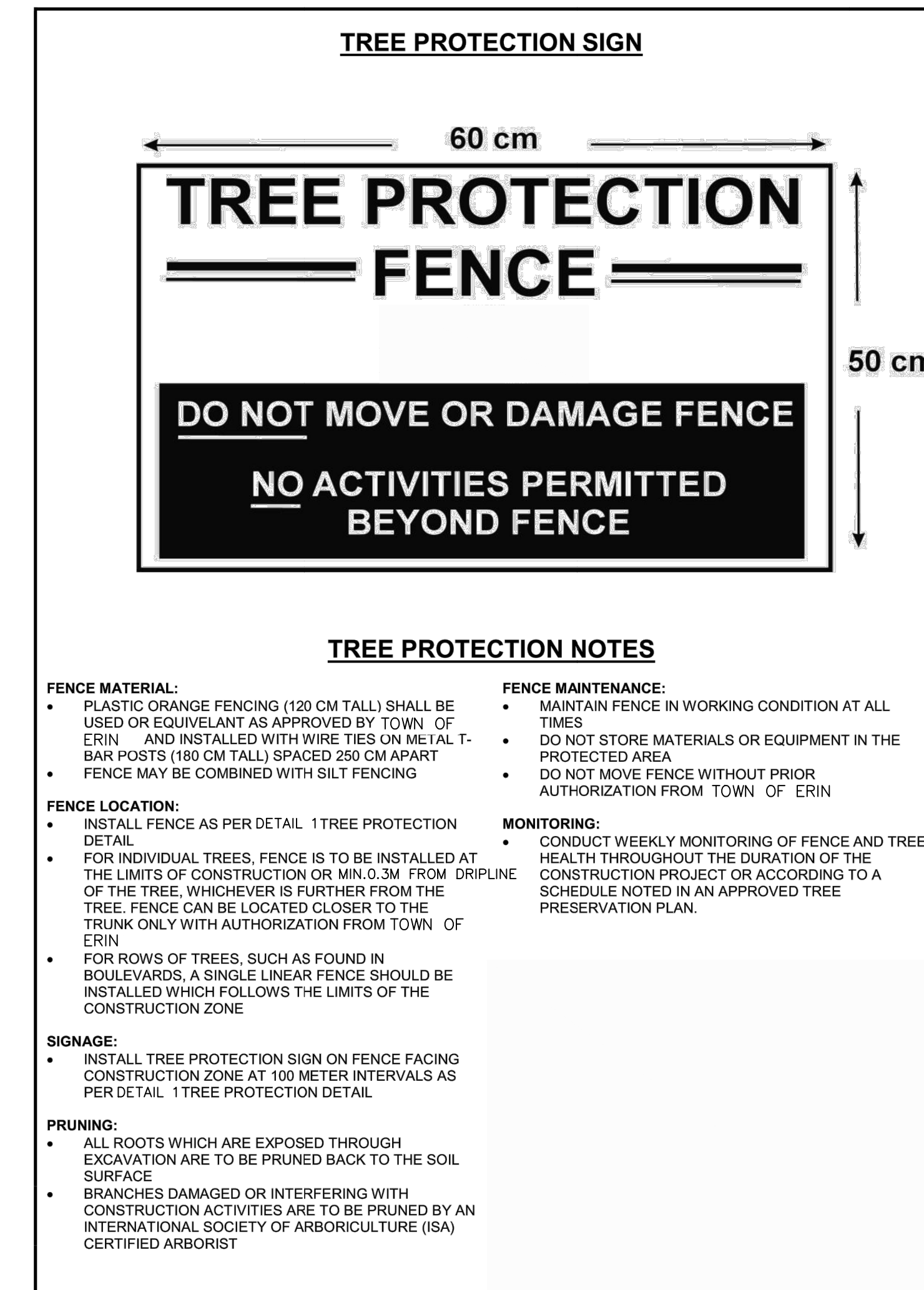
*NOTED SCALE IS APPLICABLE ONLY WHEN PRINTED ON ARCH D (34"x36") SIZE SHEET



3 HEAVY-DUTY EROSION AND SEDIMENT CONTROL FENCE DETAIL
STANDARD DETAIL N.T.S.



1 TREE PROTECTION FENCE DETAIL
STANDARD DETAIL - AMENDED FROM THE YORK REGION STANDARD N.T.S.



2 TREE PROTECTION SIGN DETAIL
STANDARD DETAIL - AMENDED FROM THE YORK REGION STANDARD N.T.S.

NOTE:
TO BE READ IN CONJUNCTION WITH ARBORIST REPORT AND TREE PROTECTION PLAN BY CANOPY CONSULTING DATED MARCH 9, 2022.

no.	date	version	by
1.	OCT 3 2023	ISSUED FOR DRAFT PLAN RESUBMISSION #3	MC/ED
0.	MAY 18 2022	ISSUED FOR DRAFT PLAN AND ZONING SUBMISSION #1	AV

All information hereon to be checked and verified at the site and any discrepancies must be reported to and clarified by the landscape architect before commencing work. All drawings, specifications, details, digital information, etc., prepared by the landscape architect are instruments of service and as such are his property and must be returned at his request.

MEMBER
ONTARIO ASSOCIATION OF LANDSCAPE ARCHITECTS

ALEXANDER BUDREVICS
ASSOCIATES LIMITED
LANDSCAPE ARCHITECTS

866 Don Mills Road, Second Tower, Suite 212
Toronto, Ontario, Canada, M3C 1W3

416.444.5201

www.budrevics.com

project
ERIN SUBDIVISION
5528 EIGHTH LINE
ERIN, ONTARIO
EC (ERIN) GP INC.

drawing
TREE PROTECTION AND EROSION CONTROL DETAILS

date	DECEMBER 14, 2021	drawn	AV
scale*	AS SHOWN	file	3528TPD/V1-231003

direction	project no.
	3528
	sheet no.
	TPD-1

*NOTED SCALE IS APPLICABLE ONLY WHEN PRINTED ON ARCH D (34"x36") SIZE SHEET