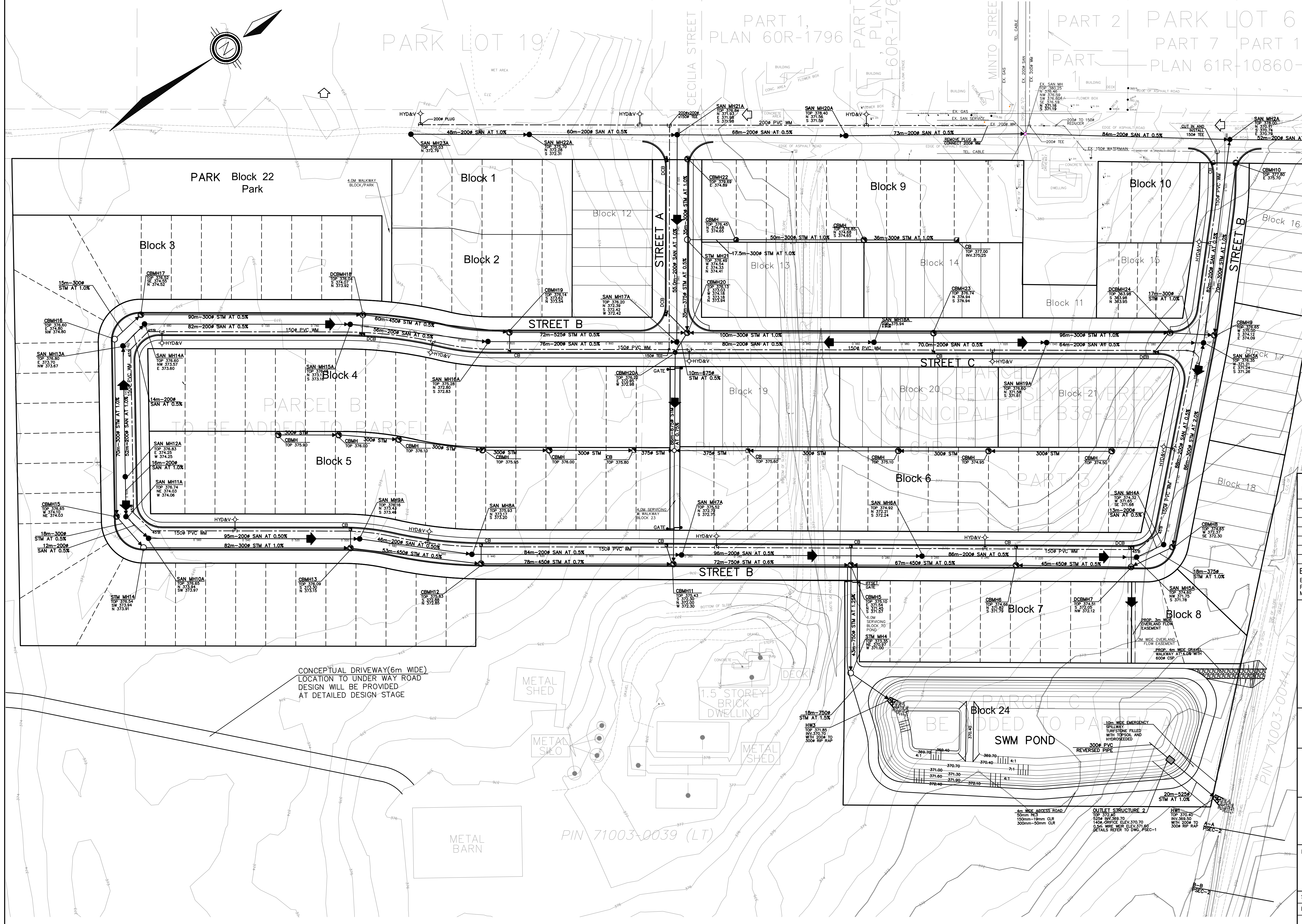
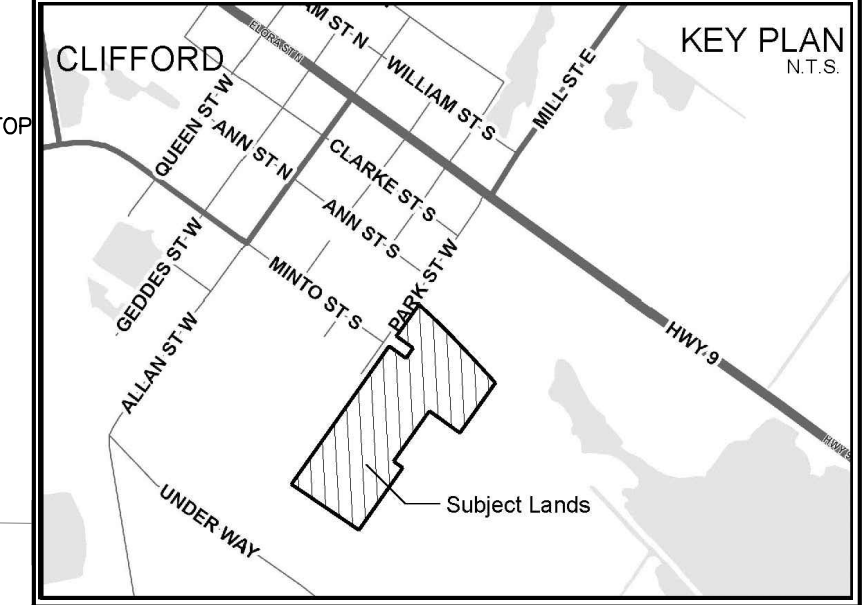


- NOTE:
1. ALL SANITARY SEWER SYSTEM SHALL BE CONSTRUCTED OF MATERIALS AND WITH JOINTS THAT ARE EQUIVALENT TO WATERMAIN STANDARDS OF CONSTRUCTION AND ARE TO BE PRESSURE TESTED WITH A LOW AIR PRESSURE TEST OF 5 PSI AS PER OPSS 410 PERFORMED IN SITU DURING CONSTRUCTION.
 2. THE SANITARY SEWER PIPE JOINTS MUST BE CERTIFIED TO 50 PSI HYDROSTATIC PRESSURE (ON LAB, MANUFACTURING FACILITY OR IN SITU) BY A THIRD PARTY ACCREDITED BY THE STANDARDS COUNCIL OF CANADA.
 3. THE SANITARY SEWER PIPES SHALL ALSO BE MANDREL TESTED OR TESTED BY LASER PROFILE WITH SATISFACTORY RESULTS.
 4. SANITARY SERVICES ARE TO BE PRESSURE TESTED WITH A LOW AIR PRESSURE TEST OF 5 PSI AS PER OPSS 410 PERFORMED IN SITU DURING CONSTRUCTION.
 5. SANITARY SERVICES MUST HAVE A MINIMUM VERTICAL CLEARANCE OF 0.50m WHEN CROSSING UNDER OR OVER THE WATERMAIN.

LEGEND

- EXISTING WATERMAIN
- EXISTING STORM MANHOLE
- PROPOSED STORM MANHOLE
- PROPOSED SANITARY MANHOLE
- PROPOSED STORM CATCHBASIN MANHOLE (SINGLE)
- PROPOSED STORM CATCHBASIN MANHOLE (DOUBLE)
- PROPOSED DITCH INLET CATCHBASIN/CATCHBASIN
- PROPOSED VALVE AND BOX
- PROPOSED FIRE HYDRANT

- EXIST. OVERLAND FLOW ROUTE
- OVERLAND FLOW ROUTE
- PROPOSED WM CONN. WITH CURB STOP
- PROPOSED SAN CONNECTION
- PROPOSED STM CONNECTION



SUBMISSIONS: 1st ___ 2nd V 3rd ___ INTERIM ___
 DATE: MARCH/25 Final

2025.03.27 ISSUED FOR FSR SUBMISSION
 2024.06.24 ISSUED FOR FSR SUBMISSION
 DATE: _____ DETAILS

ELEVATION NOTE
 ELEVATIONS ARE OF GEODETIC ORIGIN (CGVD-1928/78), AND ARE DERIVED FROM GNSS OBSERVATIONS AND NATURAL RESOURCES CANADA'S GEOD MODEL HT2.0.

DESIGNED BY
ANDRZEJ JAWORSKI P.Eng.
 CONSULTING ENGINEER

DESIGNED BY
ANDRZEJ JAWORSKI P.Eng.
 CONSULTING ENGINEER

DESIGNED BY
ANDRZEJ JAWORSKI P.Eng.
 CONSULTING ENGINEER

Urbtech Engineering Inc.
 1200 Speers Road, Suite 8, Oakville, Ontario, L6L 2K4
 Telephone: 905 896 7364

CLIFFORD (PARK STREET) DEVELOPMENTS INC.
 41 PARK STREET WEST
 TOWN OF MINTO

TOWN OF MINTO

DRAWING NAME:
SITE SRVICING PLAN

SCALE: 1:750 AREA: MINTO PROJECT No.: 22-471
 DRAWN BY: G.J. CHECKED BY: A.J. PLAN No.: S1

CONCEPTUAL DRIVEWAY(6m WIDE)
 LOCATION TO UNDER WAY ROAD
 DESIGN WILL BE PROVIDED
 AT DETAILED DESIGN STAGE

PIN 71003-0039 (LT)

PIN 71003-0044 (LT)