

**SUPPLEMENTARY DOCUMENTATION
Stage 3 Archaeological Assessment
Alma Subdivision, 31 Church St, Alma
H1 (AkHd-4) and H2 (AkHd-5)**

Part of Lots 1–8, 10, 11, 25–35 and
Part of Lot 9, Registered Plan 134 and
Lot 1, Concession 1 West of Grand River,
Geographic Township of Pilkington,
Township of Mapleton, County of Wellington

Submitted to:

Exact Construction Ltd.
8262 Wellington 19,
Fergus, Ontario
N1M 2W4
and

Ontario's Ministry of Citizenship and Multiculturalism

Submitted by:



Detritus
CONSULTING LTD.
archaeology · heritage

196 Westheights Drive, Kitchener Ontario, N2N 1J9
Mobile/Office: 519-744-7018
e-mail: garth@golden.net
website: www.detritusconsulting.ca

Licensee: Walter McCall
License Number: P389
PIF Numbers: P389-0628-2022 [H1 (AkHd-4)]
P389-0629-2022 [H2 (AkHd-5)]
CP Number: 2022-169

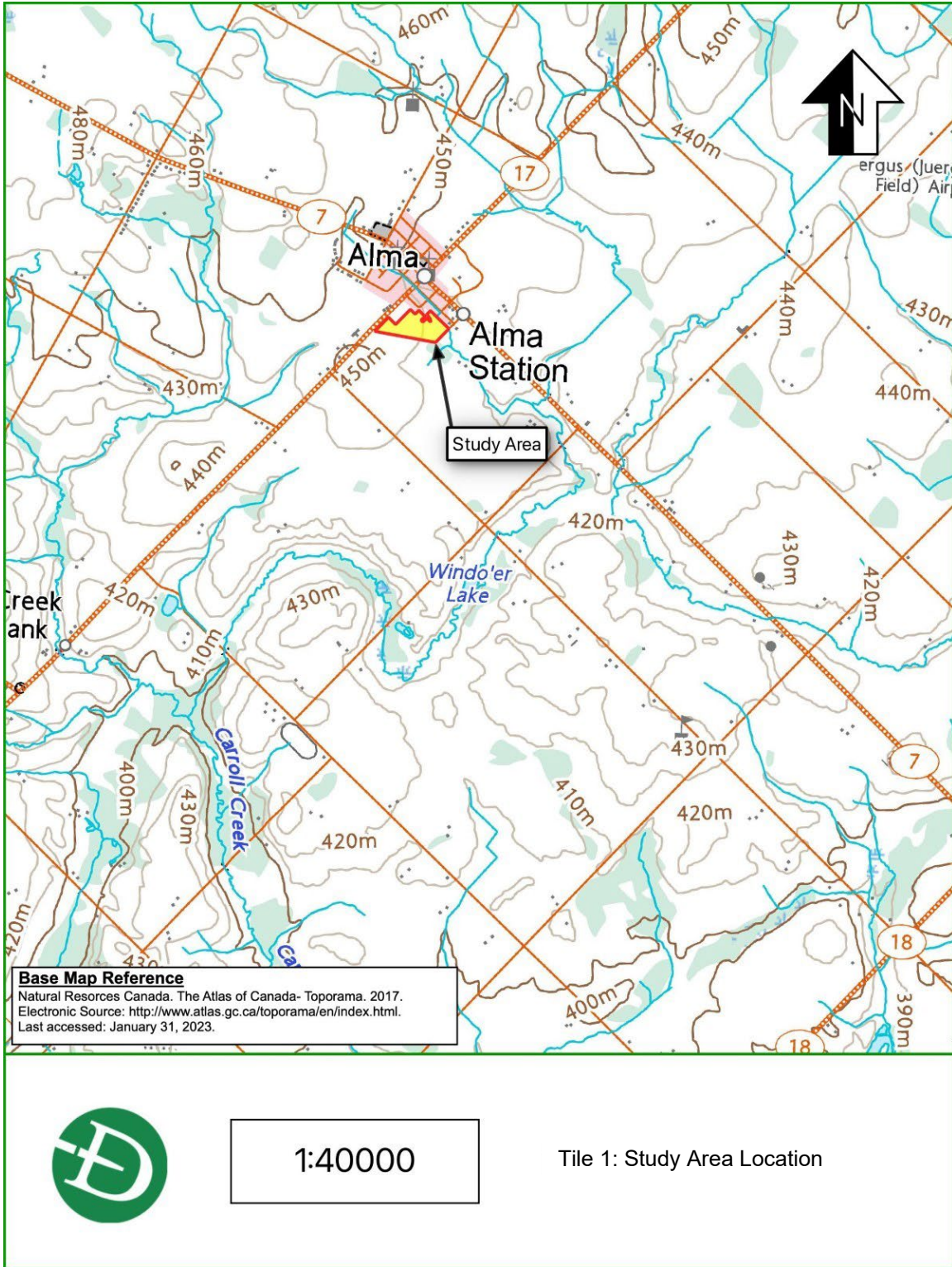
ORIGINAL SUPPLEMENTARY DOCUMENTATION

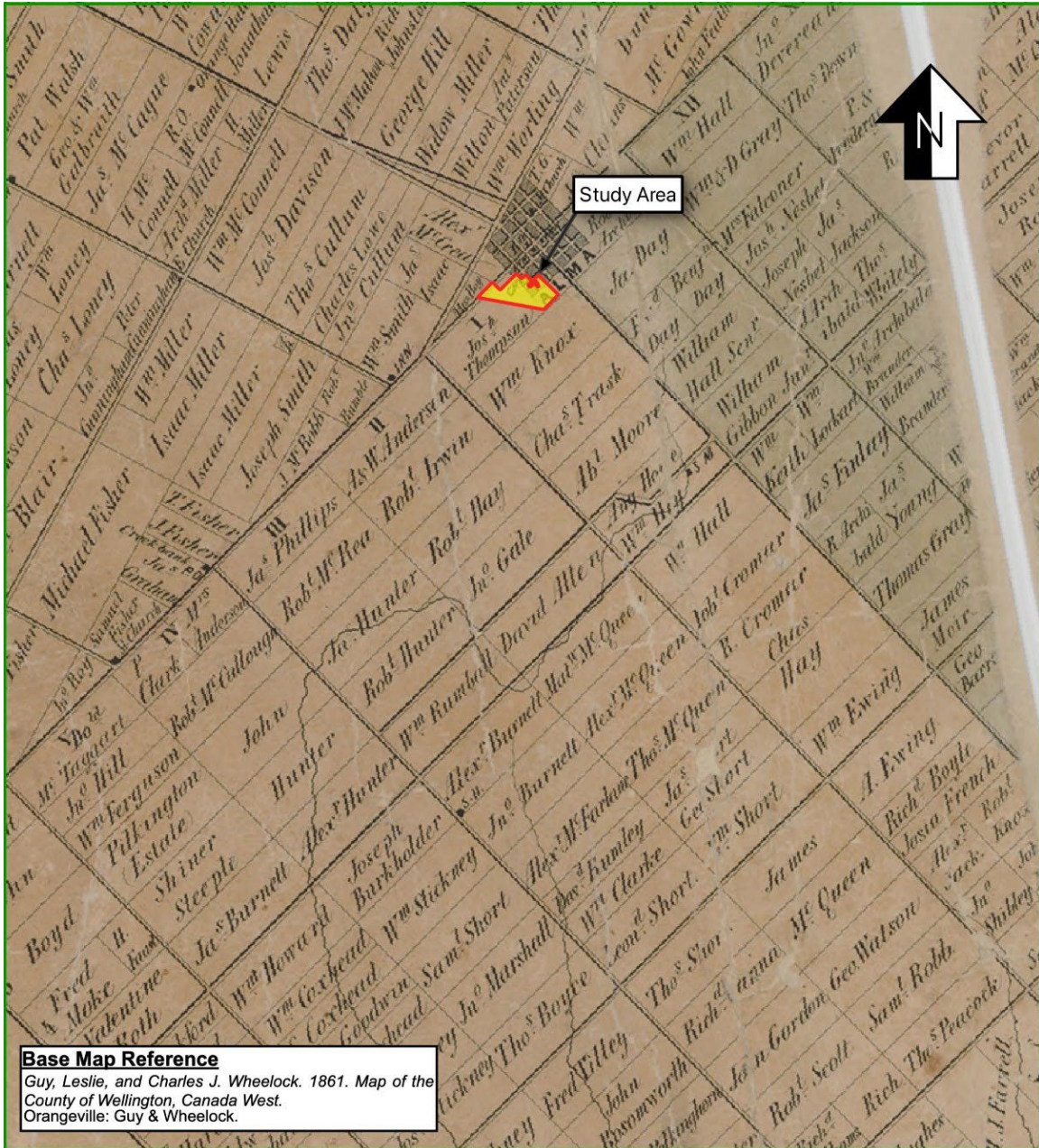
July 9, 2024

Table of Contents

1.0	Maps	1
2.0	Universal Transverse Mercator	7
3.0	Aboriginal Engagement	8
3.1	Email Correspondence	10
3.1.1	Signed Cost Estimate from Proponent	10
3.1.2	SNGR	17
3.1.3	MCFN	21
3.1.4	HDI	23
3.2	Project Memo	25

1.0 Maps





Base Map Reference
Guy, Leslie, and Charles J. Wheelock. 1861. Map of the County of Wellington, Canada West. Orangeville: Guy & Wheelock.



Not to Scale

Tile 2: Portion of Guy Leslie's 1861 Map of the County of Wellington, Canada West



Legend

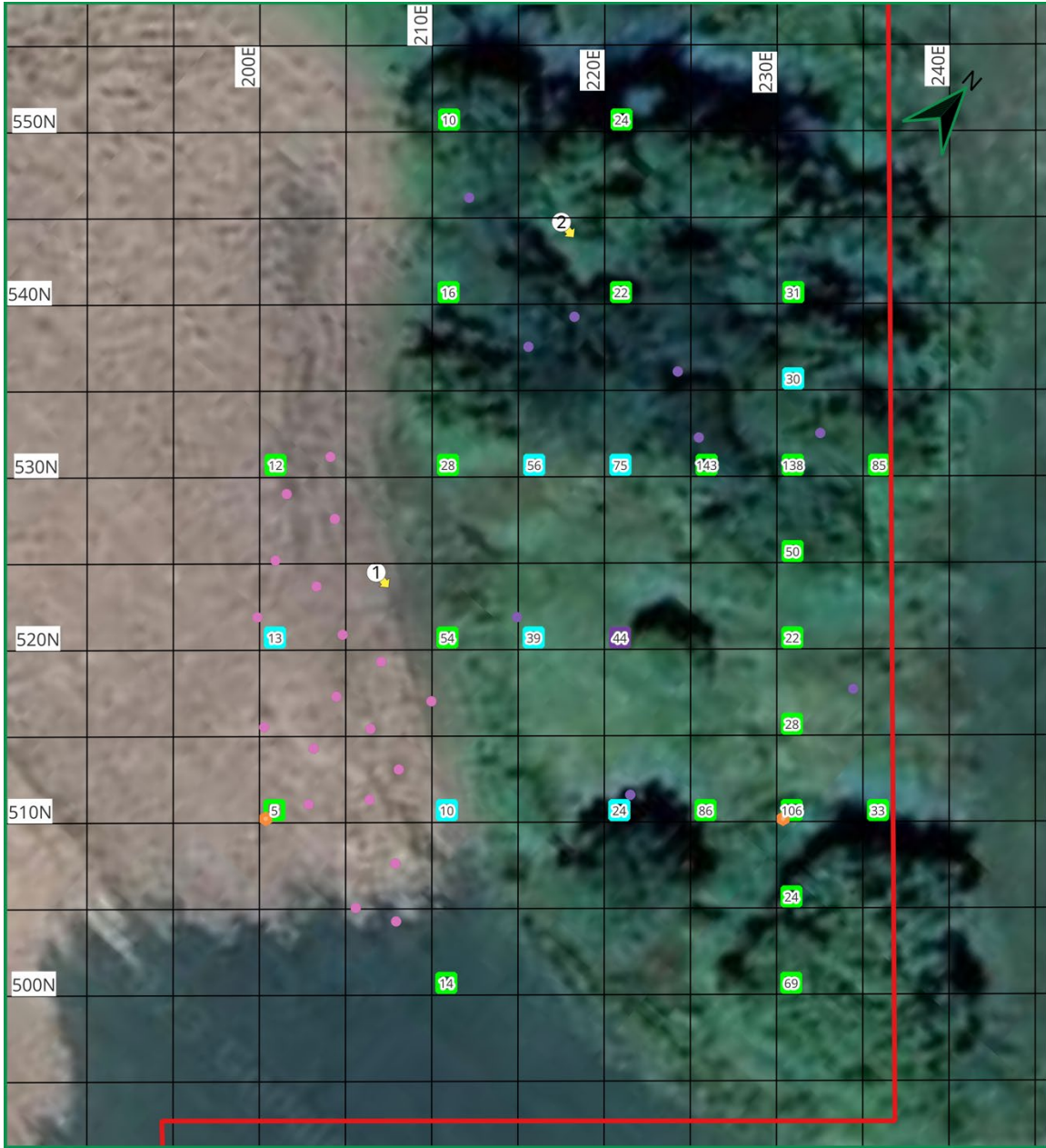
-  Site Locations
-  Study Area
-  Stage 1-2 Archaeological Assessment (Detritus 2023)



Title 4: Previous Archaeological Assessment

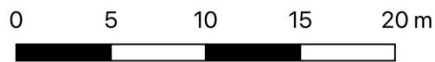
Map Creator: Isaac Bender
CRS: WGS 84 NAD 17N
Baselayer: Google Satellite Imagery

Stage 3 Archaeological Assessment, Alma Subdivision, H1 (AkHd-4) and H2 (AkHd-5)



Legend

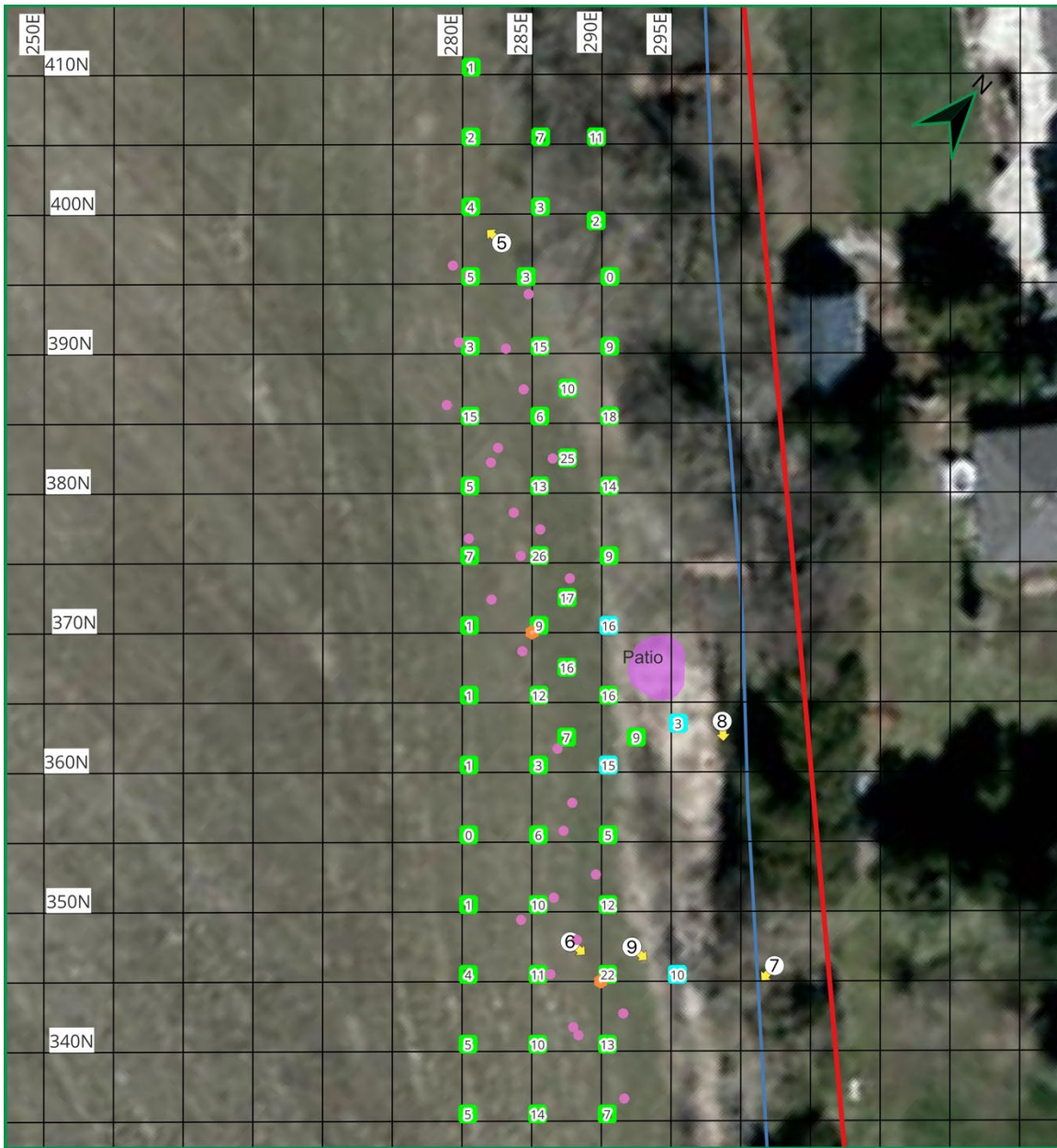
-  Photo Location and Direction
-  Permanent Datum Stakes
-  Stage 2 Surface Finds (Detritus 2024)
-  Stage 2 Positive Test Pit (Detritus 2024)
-  Study Area
-  Stage 3 1m Test Unit
-  Stage 3 1m Test Unit - Feature
-  Stage 3 1m Test Unit - Disturbance











Tile 5: H1 (AkHd-4) Stage 3 Results

Map Creator: Isaac Bender
 CRS: WGS 84 NAD 17N
 Baselayer: Google Satellite Imagery

Stage 3 Archaeological Assessment, Alma Subdivision, H1 (AkHd-4) and H2 (AkHd-5)



Legend

-  Photo Location and Direction
-  Permanent Datum Stakes
-  Stage 2 Surface Finds (Detritus 2021)
-  Creek
-  Study Area
-  Existing Stone Patio
-  Stage 3 1m Test Unit
-  Stage 3 1m Test Unit - Feature



Tile 6: H2 (AkHd-5) Stage 3 Results

Map Creator: Isaac Bender
 CRS: WGS 84 NAD 17N
 Baselayer: Google Satellite Imagery

2.0 Universal Transverse Mercator

The Universal Transverse Mercator ('UTM') coordinates recorded during the Stage 3 assessments are provided below. The UTM coordinates were recorded using a Garmin eTrex Touch 30x GPS unit with a minimum accuracy 3m (North American Datum 1983 ('NAD83') and UTM Zone 17T). The UTM coordinates for the archaeological sites are presented in Table 1 below.

Table 1: UTM Coordinates for H1 (AkHd-4) and H2 (AkHd-5) recorded during the Stage 3 assessment

Site Name	Description	UTM Easting	UTM Northing
H1 (AkHd-4)	North	540043.977683835	4841746.5375406
H1 (AkHd-4)	South	540086.3351716085	4841703.977869114
H1 (AkHd-4)	East	540078.1467312513	4841738.349100242
H1 (AkHd-4)	West	540052.7726753297	4841711.458666477
H1 (AkHd-4)	Centre	540060.5567482618	4841730.362843598
H1 (AkHd-4)	Datum #1	540059.9980847272	4841704.172482643
H1 (AkHd-4)	Datum #2	540082.5500693928	4841723.956516302
H2 (AkHd-5)	North	540188.052546499	4841685.545338387
H2 (AkHd-5)	South	540240.0941852872	4841628.535524058
H2 (AkHd-5)	East	540224.9412498883	4841661.573891403
H2 (AkHd-5)	West	540210.2851320434	4841653.873219315
H2 (AkHd-5)	Centre	540214.3838768644	4841658.841394856
H2 (AkHd-5)	Datum #3	540216.2208650054	4841654.98464957
H2 (AkHd-5)	Datum #2	540236.4662238284	4841639.488667962

3.0 Aboriginal Engagement

As per Section 7.6.2, Standards 1 and 2 of the *Standards and Guidelines for Consultant Archaeologists* ('Standards and Guidelines'; Government of Ontario, 2011a), details regarding the engagement activities conducted by Detritus Consulting Ltd. ('Detritus') as part of the current Stage 3 assessments are provided below. Copies of the separate email correspondences between Detritus and Mississaugas of the Credit First Nation ('MCFN'), Six Nations of the Grand River ('SNGR'), and Haudenosaunee Development Institute ('HDI') as well as a copy of the project memo sent to all three communities can be found in Sections 3.1 and 3.2 below.

According to Section 3.4, Standard 2 of the *Standards and Guidelines* (Government of Ontario 2011a) and Section 1.1, Standard 1 of the *Engaging Aboriginal Communities in Archaeology* draft technical bulletin (Government of Ontario 2011b), Aboriginal communities must be engaged during a Stage 3 assessment when assessing the cultural heritage value or interest of an Aboriginal archaeological site that is known to have or appears to have sacred or spiritual importance, or is associated with traditional land uses or geographic features of cultural heritage interest, or is the subject of Aboriginal oral histories (Government of Ontario 2011a and 2011b).

Furthermore, Section 3.5, Standard 1 of the *Standards and Guidelines* (Government of Ontario 2011a) and Section 1.1, Standard 2i of the *Engaging Aboriginal Communities in Archaeology* draft technical bulletin (Government of Ontario 2011b) states that Aboriginal communities must be engaged following a Stage 3 assessment when formulating Stage 4 mitigation strategies for the following types of Aboriginal archaeological sites:

- a. rare Aboriginal archaeological sites
- b. sites identified as sacred or known to contain human remains
- c. Woodland Aboriginal sites
- d. Aboriginal sites where topsoil stripping is being contemplated
- e. Undisturbed Aboriginal sites
- f. Sites previously identified as being of interest to the Aboriginal community

Section 1.2, Guideline 4 of the *Engaging Aboriginal Communities in Archaeology* draft technical bulletin (Government of Ontario 2011b) goes on to state that Aboriginal engagement is encouraged during a Stage 3 assessment when making recommendations regarding the excavation or preservation of Aboriginal archaeological sites of cultural heritage value or interest other than those identified in the standards listed above, in order to review the recommendations with the relevant Aboriginal communities.

Detritus was retained to conduct Stage 3 assessments at H1 (AkHd-4) and H2 (AkHd-5) located at 31 Church St, Alma. As part of Detritus' Aboriginal engagement practices local First Nation communities are contacted prior to every project Detritus is retained to complete. Additionally, Detritus contacts all Proponents on behalf of First Nation communities with regards to sharing their contact information, therefore allowing them to set up a monitoring agreement, if they choose.

On July 15, 2022, Detritus provided Kevin Vanleeuwen of Exact Construction Ltd. (the 'Proponent') with a cost estimate to conduct the Stage 3 assessments for H1 (AkHd-4) and H2 (AkHd-5) at 31 Church St, Alma. On Page 6 of the Cost Estimate document (see Section 3.1.1 below for a copy of the signed Cost Estimate), Detritus outlines its current engagement policies. Note that at that time, the MCM was known as the Ministry of Heritage, Sport Tourism and Culture Industries ('MHSTCI').

The purpose of this text was to inform the Proponent of the following;

1. That while engagement is not mandated for Stage 3 assessments, it is Detritus' current Engagement policy to engage during all stages of investigation;
2. that the MCM also encourages engagement at all stages of archeological investigation;
3. that typically, First Nations communities request that the Proponent retain at cost representatives to serve as on-site monitors;
4. that Detritus must address any request made by First Nations communities for on-site monitors; and

Stage 3 Archaeological Assessment, Alma Subdivision, H1 (AkHd-4) and H2 (AkHd-5)

5. that, although not mandated, Detritus encourages the Proponent to retain on-site monitors, and requests that they share their contact information with First Nations communities.

On August 10, 2022, the Proponent returned a signed copy of the cost estimate but did not agree to provide their contact information with First Nations communities.

While the Proponent did not provide approval to share their contact information with First Nations communities, they did agree to allow First Nation representatives on site as unpaid monitors.

Local First Nation communities were contacted on September 30, 2022 via email to inform them of the project, including a proposed start date of the week of October 3-7, 2022. The email also contained a memo outlining Detritus' proposed Stage 3 assessment strategies. The purpose of this memo was to provide local First Nation communities an opportunity to provide input on the assessment strategies.

In this memo First Nation communities were informed that the Proponent was unwilling to share their contact information; however, representatives were welcome on site as unpaid monitors during the assessment. In lieu of monitors on site Detritus was willing to provide First Nation communities with the results of the fieldwork and a copy of the completed draft report prior to its submission to the MCM.

SNGR, MCFN, and HDI were informed by Detritus of the field assessment date. At no time was any fieldwork conducted without the knowledge of all three communities.

The Stage 3 assessments were conducted between October 11 and November 7, 2023. No representatives were present during the Stage 3 assessments.

Additionally, an update of the field results and a draft copy of the report was sent to all three communities on March 30, 2023, prior to submission to the MCM, for comment or concerns (See SNGR Email #1 in Section 3.1.2, MCFN Email #1 in Section 3.1.3, and HDI Email #1 in Section 3.1.4). No communication was received from MCFN or HDI.

On April 14, 2023 Tanya Hill-Montour of SNGR contacted Detritus, in an email chain that discussed the Stage 1-2 and Stage 3 assessments, indicating that SNGR had interest in the project (See SNGR Email #2 in Section 3.1.2). At this time the Stage 1-2 and Stage 3 assessments had been completed and Detritus had not been retained to conduct any Stage 4 assessment mitigation at H1 (AkHd-4).

3.1 Email Correspondence

3.1.1 Signed Cost Estimate from Proponent



69 Claremont Ave., Kitchener, ON, N2M 2P5
Mobile/Office: (519) 744-7018
E-mail: garth@golden.net www.detcon.net

July 15, 2022

Mr. Kevin Vanleeuwen

Exact Construction Ltd.

RE: Archaeological Assessment Stage 3 of Locations H1 and H2 and Grave Search adjacent to Church Lot/former cemetery, Proposed Alma Subdivision, Alma, ON.

Dear Kevin,

This proposal outlines the procedures, costs and schedule for Stage 3 assessment of two Post-contact Euro-Canadian archaeological sites found during Stage 2 assessment of the Study Area by Detritus, along with a cemetery investigation designed to confirm the presence or absence of undocumented burials on the subject property adjacent to the former cemetery.

Due to the number and age of the artifacts found at H1 and H2 these sites require Stage 3 assessment to satisfy the MHSTCI 2011 Standards and Guidelines. Stage 3 site assessment is explained below.

KW

Stage 3 Test Unit Survey

Fieldwork:

The purpose of the Stage 3 assessment is to assess the cultural heritage value or interest of the archaeological site identified during the Stage 2 assessment, to determine whether it has been sufficiently documented or if further measures are required to protect or document the site fully. Stage 3 assessment will involve the excavation of 1m x 1m test squares across the limits of the site at 5-10m intervals. Test squares are typically 30-35cm deep or whatever depth is required to penetrate 5cm into subsoil.

If Stage 4 mitigation of impacts is required, Detritus Consulting will issue a new quotation for that fieldwork. All proposed fieldwork will be conducted according to the MHSTCI's 2011 *Standards and Guidelines for Consultant Archaeologists*. If you have more questions about the assessment process, please contact me.

Final Report:

A final report will be issued at the conclusion of Stage 3 investigation. The report builds upon the Stage 1-2 assessment report and provides a detailed account of the Stage 3 investigation and results. Based on the documented results, this report will either recommend Stage 4 mitigation for the site or request that the assessment property be cleared of archaeological concern. This report will also include information on the site environment, soils, original vegetation, historic land use, title history as well as a registry of nearby archaeological sites. It is accompanied by maps and photographs. This report will follow the reporting format standards in *Standards and Guidelines for Consultant Archaeologists* MHSTCI 2011.

If no Stage 4 is recommended, then no further archaeological assessment will be conducted and a report with a recommendation for clearance of the archaeological condition will be submitted to the MHSTCI. If Stage 4 is recommended, this work will need to be undertaken before the MHSTCI will issue a clearance. Stage 4 is the final Stage of the archaeological process.

Detritus does the amount of work necessary to satisfy the 2011 MHSTCI Standards for Consultant Archaeologists.

ku

Fee Estimate

Detritus Consulting Ltd. agrees to supply all material and perform all labour necessary to complete the work outlined below. The cost range represents possible variation in the number of test units required, depth of soil and number of artifacts recovered. It also accounts for the possible inclusion of First Nations Monitors.

Should a Stage 4 be required based on the Stage 3 findings, fewer units will need to be excavated at Stage 3. The MHSTCI Standards allow us to excavate at 10m intervals in these cases. Thus, in this case the Stage 3 price will be lower but there will be an additional Stage of assessment.

If no Stage 4 will be recommended based on the Stage 3 results, the Stage 3 must be more comprehensive with test squares excavated at 5m intervals. Thus, the price for Stage 3 will be higher but that will be the end of the assessment process. In some cases when a conclusion cannot be reached until after the minimum number of squares has been excavated, the price will fall somewhere in the middle.

This price assumes First Nations Monitors will be on site during stage 3.

Fee Estimate

Stage 3 of Location H1

Price range (Low - High)

Minimum stage 3 (stage 4 required) - complete stage 3 (no stage 4 required)

\$28,100.00* - [REDACTED]

Likelihood of stage 4: Moderate/high

(If this site requires stage 4 it will result in a stage 3 price more toward the lower end of the price range. Whether a stage 4 is required depends on the age of artifacts recovered)

* price subject to HST

The variation in price depends on the number of test squares required to be excavated as well as soil quality and artifact counts.

KW

Stage 3 of Location H2

Price range (Low – High)

Minimum stage 3 (stage 4 required) - complete stage 3 (no stage 4 required)

██████████ - ██████████

Likelihood of stage 4: Low/moderate

(If this site does not require stage 4 it will result in a stage 3 price more toward the higher end of the price range. Whether a stage 4 is required depends on the age of artifacts recovered)

* price subject to HST

Stage 3 Grave search

██████████

This entails Mechanical Topsoil Removal (MTR) and shovel shining of an area 10m in all directions around the cemetery lot within the study area. If human remains are found there could be additional costs regarding consulting and disposition of the remains.

This cost estimate includes all labour necessary to complete the Stage 3 assessment as well as all required reporting and consultation, as specified above. *It does not, however, reflect any Stage 4 costs that may be incurred.*

Invoicing:

Payment is due 30 days after report submission. In the event that Detritus Consulting Ltd. is delayed or hindered in performance of the assessment due to any occurrence beyond our control, performance of the agreement will be suspended for a period equal to the delay.

Schedule:

Fieldwork is entirely weather dependent. Soil must be dry and screenable. Fieldwork could start around the first week of September. Fieldwork will take approximately 1-4 weeks for H1; 3-8 days for H2 and 1 -2 days for the Grave Search. A report could be

KW

Stage 3 Archaeological Assessment, Alma Subdivision, H1 (AkHd-4) and H2 (AkHd-5)

expected approximately 6 weeks later. Timing of review from the Ministry is 8-13 weeks with an approved expedited review.

Safety

Test squares approximately 35cm deep will be excavated across the archaeological site area. Detritus Consulting Ltd. bears no liability whatsoever for any injury or inconvenience the assessment may cause. Many of these may need to be left open if a Stage 4 is required. By accepting this proposal the proponent assumes all liability. If fencing is required, it is the responsibility of the proponent to purchase and transport to the site. Detritus staff can help with installation

KJ

First Nations Engagement

While it is not strictly required under the Standards and Guidelines to engage First Nations during stage 3 assessment, the MHSTCI strongly encourages it. As of July 2018, the MHSTCI has been distributing a weekly email update to all Municipalities, First Nations groups and interested third parties advising them of: the name of each project currently being conducted in the Province, the proponent including contact details as well as the consulting archaeologist, stage of fieldwork and location of the assessment. This information is being supplied as part of the Duty to Consult by the Crown. In addition, the MHSTCI has directed archaeological consultants to engage First Nations at stage 1. As a result, First Nations request contact information for proponents in order to discuss engagement and contracts for the deployment of Field Liaison Representatives (FLRs). Detritus encourages engagement with First Nations/Aboriginal communities as laid out in the MHSTCI 2011 Standards and Guidelines.

If you have any questions regarding the Duty to Consult or Engagement under the MHSTCI 2011 Standards and Guidelines, please contact us.

Please advise whether you give us permission to provide your contact info to Aboriginal communities with treaty rights in the area of your project.

The prices quoted in this proposal assume First Nations monitoring will not take place. If this is incorrect, please advise. In that case this proposal is invalid and we will issue a new proposal.

- I DO agree to allow Detritus to provide local Aboriginal communities with the Proponent's contact information
- I DO NOT agree to allow Detritus to provide local Aboriginal communities with the Proponent's contact information

Agreement:

Detritus Consulting agrees to conduct the work described in the above proposal.



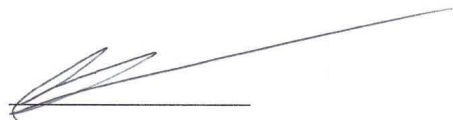
Garth Grimes

Consulting Archaeologist

Detritus Consulting Ltd.

The client accepts this proposal and agrees to remit payment when the draft final report for this archaeological assessment is submitted. Please make all cheques payable to Detritus Consulting Ltd. In addition, the undersigned gives authorization to proceed with this assessment.

Aug 10²⁰ / _____ Date



Client(s)

Upon acceptance please sign and return one copy to **Detritus Consulting Ltd.**

3.1.2 SNGR

Email #1



Amanda McCall <amandamccall.arch@gmail.com>

Re: 31 Church Street, Alma (Alma Subdivision) - Stage 3 Memo - Detritus

1 message

Amanda McCall <amandamccall.arch@gmail.com>
To: Tanya Hill-Montour <tanyahill-montour@sixnations.ca>
Cc: Walter McCall <waltermccall.arch@gmail.com>

Thu, Mar 30, 2023 at 2:59 PM

Good afternoon Tanya,

I apologize for the delayed update on this project. Detritus completed the Stage 3 assessments at H1 (AkHd-4) and H2 (AkHd-5) in the fall of 2022.

The Stage 3 assessment of H1 (AkHd-4) produced 1,291 Euro-Canadian artifacts from the hand excavation of 29 test units. Four features were observed during the Stage 3 assessment and have been covered with geotextile fabric for future exploration. Overall, the distribution of artifacts and features at H1 (AkHd-4) suggests the site was subject to a demolition event sometime in the late 19th century, pushing structural components such as brick, mortar, and slag towards the western half of the site, while the higher artifact counts remained relatively intact along the eastern half of the site. Based on the available evidence, H1 (AkHd-4) has been interpreted as a demolition event that occurred at the original church building, located at 31 Church St, prior to or around the time of its relocation in 1892 to 8 Peel Street to meet the demands of the growing congregation. Some artifacts found at this site could also be related to the nearby occupations by the Pilkington, Sylec, McRae, and Thompson families, dumped at this location prior to the demolition event. Based on the results of the Stage 3 assessment, H1 (AkHd-4) has been interpreted as a Euro-Canadian site occupied from the middle of the 19th century until the early 20th century. Given the presence of four possible subsurface cultural features, H1 (AkHd-4) meets the criteria for a Stage 4 Mitigation of Developmental Impacts, as per Section 3.4, Standard 1g of the *Standards and Guidelines* (Government of Ontario 2011).

The Stage 3 assessment of H2 (AkHd-5) produced 468 Euro-Canadian Artifacts from the hand excavation of 54 test units. Given the available evidence, H2 (AkHd-5) has been interpreted as a Euro-Canadian artifact scatter documenting a period of use spanning the 19th century, including the eventual occupations by the Pilkington, Sylec, McRae, and Thompson families in the latter half of the century. However, due to its location on a seasonal floodplain and currently cultivated agricultural field and the relative quantities of artifacts recovered, their provenance is speculative. Based on the results of the Stage 3 assessment, wherein 80% of the artifacts recovered do not predate 1870, H2 (AkHd-5) does not meet any of the criteria for a Stage 4 Mitigation of Developmental Impacts, as they are outlined in Sections 3.4 and 3.4.2 of the *Standards and Guidelines* (Government of Ontario 2011).

To date Detritus has not been retained to conduct a Stage 4 mitigation within the Study Area.

As per the project memo, please see attached a draft copy of the Stage 3 report, which has not yet been submitted to the MCM. We do not anticipate submitting this report in the near future, however, please let us know if you have any questions or concerns at your earliest convenience.

Take care,
Amanda



Amanda McCall

Detritus Consulting | Archaeologist R470

m: 226-934-8803

w: www.detritusconsulting.ca

e: amandamccall.arch@gmail.com

Follow us:



On Fri, Sep 30, 2022 at 10:56 AM Amanda McCall <amandamccall.arch@gmail.com> wrote:

Stage 3 Archaeological Assessment, Alma Subdivision, H1 (AkHd-4) and H2 (AkHd-5)

Good morning

Detritus has been retained to conduct the Stage 3 assessments for AkHd-4, AkHd-5 located at 31 Church Street in Alma. We anticipate starting this fieldwork the week of October 3, 2022, weather dependent. Please see attached the project memo.

Take care,

Amanda



Amanda McCall

Detritus Consulting | Archaeologist R470

m: 226-934-8803

w: www.detritusconsulting.ca

e: amandamccall.arch@gmail.com

Follow us:



 **P389-0628-2022, P389-0629-2022_Mar2023_RE_draft.pdf**
10420K

Email #2



Amanda McCall <amandamccall.arch@gmail.com>

RE: 31 Church Street, Alma (Alma Subdivision) - Stage 3 Memo - Detritus

1 message

Tanya Hill-Montour <tanyahill-montour@sixnations.ca> Fri, Apr 14, 2023 at 9:19 AM
To: Amanda McCall <amandamccall.arch@gmail.com>
Cc: Walter McCall <waltermccall.arch@gmail.com>, "Archaeology (MHSTCI)" <archaeology@ontario.ca>

Amanda

SNGREC has interest in participation regarding this project.

Kind Regards,

Tanya j. Hill-Montour B.A.Hons.

Six Nations of the Grand River - Archaeology Supervisor.

c.226.388.0665

e. tanyahill-montour@sixnations.ca

From: Amanda McCall <amandamccall.arch@gmail.com>
Sent: Thursday, March 30, 2023 2:36 PM
To: Tanya Hill-Montour <tanyahill-montour@sixnations.ca>
Cc: Walter McCall <waltermccall.arch@gmail.com>
Subject: Re: 31 Church Street, Alma (Alma Subdivision) - Stage 3 Memo - Detritus

Good afternoon Tanya,

As per the email below please see attached a draft copy of the Stage 1-2 report and a tile showing the location of the sites, which has not yet been submitted to the MCM. We do not anticipate submitting this report in the near future, however, please let us know if you have any questions or concerns at your earliest convenience.

Take care,

Amanda

Amanda McCall

Detritus Consulting | Archaeologist R470

m: 226-934-8803

w: www.detritusconsulting.ca

e: amandamccall.arch@gmail.com

Stage 3 Archaeological Assessment, Alma Subdivision, H1 (AkHd-4) and H2 (AkHd-5)

Follow us:



On Tue, Oct 11, 2022 at 10:34 AM Amanda McCall <amandamccall.arch@gmail.com> wrote:

Good morning Tanya,

I hope you had a great long weekend. Detritus has completed the Stage 1-2 assessment at 31 Church Street in Alma prior to the proposed subdivision development. The assessment was conducted on July 7, 2022 by means of a test pit survey at 5m intervals in the grass and treed areas as well as a pedestrian survey at 5m intervals of the agricultural field. Two archaeological sites were recovered along the northeastern edge of the Study Area, AkHd-4 and AkHd-5. Both have been identified as 19th century Euro-Canadian sites and are being recommended for additional assessments. A Stage 3 memo for the work being conducted at these sites was sent on September 30, 2022. A copy of the Stage 1-2 report will be sent to your office once complete.

Take care,
Amanda

Amanda McCall

Detritus Consulting | Archaeologist R470

m: 226-934-8803

w: www.detritusconsulting.ca

e: amandamccall.arch@gmail.com

Follow us:



On Fri, Sep 30, 2022 at 10:56 AM Amanda McCall <amandamccall.arch@gmail.com> wrote:

Good morning

Detritus has been retained to conduct the Stage 3 assessments for AkHd-4, AkHd-5 located at 31 Church Street in Alma. We anticipate starting this fieldwork the week of October 3, 2022, weather dependent. Please see attached the project memo.

Take care,
Amanda

Amanda McCall

Detritus Consulting | Archaeologist R470

m: 226-934-8803

w: www.detritusconsulting.ca

e: amandamccall.arch@gmail.com

Follow us:

3.1.3 MCFN

Email #1



Amanda McCall <amandamccall.arch@gmail.com>

Re: 31 Church Street, Alma (Alma Subdivision) - Stage 3 Memo - Detritus

1 message

Amanda McCall <amandamccall.arch@gmail.com>

Thu, Mar 30, 2023 at 2:59 PM

To: Adam LaForme <Adam.LaForme@mncfn.ca>

Cc: Adrian Blake <Adrian.Blake@mncfn.ca>, Walter McCall <waltermccall.arch@gmail.com>

Good afternoon Adam,

I apologize for the delayed update for this project. Detritus completed the Stage 3 assessments at H1 (AkHd-4) and H2 (AkHd-5) in the fall of 2022.

The Stage 3 assessment of H1 (AkHd-4) produced 1,291 Euro-Canadian artifacts from the hand excavation of 29 test units. Four features were observed during the Stage 3 assessment and have been covered with geotextile fabric for future exploration. Overall, the distribution of artifacts and features at H1 (AkHd-4) suggests the site was subject to a demolition event sometime in the late 19th century, pushing structural components such as brick, mortar, and slag towards the western half of the site, while the higher artifact counts remained relatively intact along the eastern half of the site. Based on the available evidence, H1 (AkHd-4) has been interpreted as a demolition event that occurred at the original church building, located at 31 Church St, prior to or around the time of its relocation in 1892 to 8 Peel Street to meet the demands of the growing congregation. Some artifacts found at this site could also be related to the nearby occupations by the Pilkington, Sylec, McRae, and Thompson families, dumped at this location prior to the demolition event. Based on the results of the Stage 3 assessment, H1 (AkHd-4) has been interpreted as a Euro-Canadian site occupied from the middle of the 19th century until the early 20th century. Given the presence of four possible subsurface cultural features, H1 (AkHd-4) meets the criteria for a Stage 4 Mitigation of Developmental Impacts, as per Section 3.4, Standard 1g of the *Standards and Guidelines* (Government of Ontario 2011).

The Stage 3 assessment of H2 (AkHd-5) produced 468 Euro-Canadian Artifacts from the hand excavation of 54 test units. Given the available evidence, H2 (AkHd-5) has been interpreted as a Euro-Canadian artifact scatter documenting a period of use spanning the 19th century, including the eventual occupations by the Pilkington, Sylec, McRae, and Thompson families in the latter half of the century. However, due to its location on a seasonal floodplain and currently cultivated agricultural field and the relative quantities of artifacts recovered, their provenance is speculative. Based on the results of the Stage 3 assessment, wherein 80% of the artifacts recovered do not predate 1870, H2 (AkHd-5) does not meet any of the criteria for a Stage 4 Mitigation of Developmental Impacts, as they are outlined in Sections 3.4 and 3.4.2 of the *Standards and Guidelines* (Government of Ontario 2011).

To date Detritus has not been retained to conduct a Stage 4 mitigation within the Study Area.

As per the project memo, please see attached a draft copy of the Stage 3 report, which has not yet been submitted to the MCM. We do not anticipate submitting this report in the near future, however, please let us know if you have any questions or concerns at your earliest convenience.

Take care,
Amanda



Amanda McCall

Detritus Consulting | Archaeologist R470

m: 226-934-8803

w: www.detritusconsulting.ca

e: amandamccall.arch@gmail.com

Follow us:



On Fri, Sep 30, 2022 at 10:56 AM Amanda McCall <amandamccall.arch@gmail.com> wrote:

Stage 3 Archaeological Assessment, Alma Subdivision, H1 (AkHd-4) and H2 (AkHd-5)

Good morning Adam,

Detritus has been retained to conduct the Stage 3 assessments for AkHd-4, AkHd-5 located at 31 Church Street in Alma. We anticipate starting this fieldwork the week of October 3, 2022, weather dependent. Please see attached the project memo.

Take care,

Amanda



Amanda McCall

Detritus Consulting | Archaeologist R470

m: 226-934-8803

w: www.detritusconsulting.ca

e: amandamccall.arch@gmail.com

Follow us:



 **P389-0628-2022, P389-0629-2022_Mar2023_RE_draft.pdf**
10420K

3.1.4 HDI

Email #1



Amanda McCall <amandamccall.arch@gmail.com>

Re: 31 Church Street, Alma (Alma Subdivision) - Stage 3 Memo - Detritus

1 message

Amanda McCall <amandamccall.arch@gmail.com>
To: Todd Williams <toddwilliams@hdl.land>
Cc: Walter McCall <waltermccall.arch@gmail.com>

Thu, Mar 30, 2023 at 2:59 PM

Good afternoon Todd,

I apologize for the delayed update for this project. Detritus completed the Stage 3 assessments at H1 (AkHd-4) and H2 (AkHd-5) in the fall of 2022.

The Stage 3 assessment of H1 (AkHd-4) produced 1,291 Euro-Canadian artifacts from the hand excavation of 29 test units. Four features were observed during the Stage 3 assessment and have been covered with geotextile fabric for future exploration. Overall, the distribution of artifacts and features at H1 (AkHd-4) suggests the site was subject to a demolition event sometime in the late 19th century, pushing structural components such as brick, mortar, and slag towards the western half of the site, while the higher artifact counts remained relatively intact along the eastern half of the site. Based on the available evidence, H1 (AkHd-4) has been interpreted as a demolition event that occurred at the original church building, located at 31 Church St, prior to or around the time of its relocation in 1892 to 8 Peel Street to meet the demands of the growing congregation. Some artifacts found at this site could also be related to the nearby occupations by the Pilkington, Sylec, McRae, and Thompson families, dumped at this location prior to the demolition event. Based on the results of the Stage 3 assessment, H1 (AkHd-4) has been interpreted as a Euro-Canadian site occupied from the middle of the 19th century until the early 20th century. Given the presence of four possible subsurface cultural features, H1 (AkHd-4) meets the criteria for a Stage 4 Mitigation of Developmental Impacts, as per Section 3.4, Standard 1g of the *Standards and Guidelines* (Government of Ontario 2011).

The Stage 3 assessment of H2 (AkHd-5) produced 468 Euro-Canadian Artifacts from the hand excavation of 54 test units. Given the available evidence, H2 (AkHd-5) has been interpreted as a Euro-Canadian artifact scatter documenting a period of use spanning the 19th century, including the eventual occupations by the Pilkington, Sylec, McRae, and Thompson families in the latter half of the century. However, due to its location on a seasonal floodplain and currently cultivated agricultural field and the relative quantities of artifacts recovered, their provenance is speculative. Based on the results of the Stage 3 assessment, wherein 80% of the artifacts recovered do not predate 1870, H2 (AkHd-5) does not meet any of the criteria for a Stage 4 Mitigation of Developmental Impacts, as they are outlined in Sections 3.4 and 3.4.2 of the *Standards and Guidelines* (Government of Ontario 2011).

To date Detritus has not been retained to conduct a Stage 4 mitigation within the Study Area.

As per the project memo, please see attached a draft copy of the Stage 3 report, which has not yet been submitted to the MCM. We do not anticipate submitting this report in the near future, however, please let us know if you have any questions or concerns at your earliest convenience.

Take care,
Amanda



Amanda McCall

Detritus Consulting | Archaeologist R470

m: 226-934-8803

w: www.detritusconsulting.ca

e: amandamccall.arch@gmail.com

Follow us:



On Fri, Sep 30, 2022 at 10:57 AM Amanda McCall <amandamccall.arch@gmail.com> wrote:

Stage 3 Archaeological Assessment, Alma Subdivision, H1 (AkHd-4) and H2 (AkHd-5)

Good morning Todd,

Detritus has been retained to conduct the Stage 3 assessments for AkHd-4, AkHd-5 located at 31 Church Street in Alma. We anticipate starting this fieldwork the week of October 3, 2022, weather dependent. Please see attached the project memo.

Take care,

Amanda



Amanda McCall

Detritus Consulting | Archaeologist R470

m: 226-934-8803

w: www.detritusconsulting.ca

e: amandamccall.arch@gmail.com

Follow us:



 **P389-0628-2022, P389-0629-2022_Mar2023_RE_draft.pdf**
10420K

3.2 Project Memo



Date: September 30, 2022

RE: Stage 3 Archaeological Assessment, AkHd-4, AkHd-5, 31 Church Street, Alma

PIF(s): P389-0628-2022, P389-0629-2022

INTRODUCTION

Detritus Consulting Ltd. ('Detritus') has been retained by Van Harten Surveying Inc. ('the Proponent') to conduct Stage 3 archaeological assessment at archaeological sites AkHd-4 and AkHd-5, located at 31 Church Street in Alma in advance of future development on the property. This assessment is being conducted in advance of the proposed subdivision development. The Study Area was subject to a Stage 1-2 assessment conducted by Detritus in 2022 (P389-0538-2021). AkHd-4 and AkHd-5 have been identified as 19th century Euro-Canadian sites that were recovered along the northeastern edge of the Study Area. **A copy of the Stage 1-2 report will be sent to your office once complete.**

This investigation will be managed by professional archaeological license (P-license) holder Garth Grimes, and will adhere to the archaeological license report requirements under subsection 65 (1) of the *Ontario Heritage Act* and the Ministry of Heritage, Sport, Tourism and Culture Industries' ('MHSTCI') *Standards and Guidelines for Consultant Archaeologists* ('*Standards and Guidelines*'), established in 2011.

STAGE 3 ARCHAEOLOGICAL ASSESSMENT

The purpose of a Stage 3 Site Specific Assessment is to assess the cultural heritage value or interest ('CHVI') of a site through a controlled collection of material. This information is then used to support the determination of whether or not the site has been sufficiently documented, or if further measures are required to protect or document it fully. In compliance with the *Standards and Guidelines* (Government of Ontario 2011), the objectives of a Stage 3 assessment are:

- To collect a representative sample of artifacts;
- to determine the extent of each archaeological site and the characteristics of the artifacts;
- to assess the CHVI of each archaeological site; and
- to determine the need for mitigation of development impacts, and to recommend appropriate strategies for mitigation and future conservation.

Stage 3 assessments typically consist of detailed documentary research of the land use and occupation history of a site; a controlled surface pick-up ('CSP') of surface artifacts for sites located in ploughed fields; and test unit excavation.

PROONENT CONTACT INFORMATION

Detritus has informed the Proponent of our current Aboriginal Engagement policies. As part of this communication, Detritus has requested that the Proponent provide your office with their contact information in advance of any Stage 3 fieldwork.

Despite our petition, the Proponent has not agreed to provide contact information at this time. Detritus has reminded the Proponent of the expectation among local Aboriginal communities that representatives be retained as paid on-site monitors during a Stage 3 assessment. Additionally, Detritus has informed the Proponent of the MHSTCI's expectation that any Cultural Resource Management firm retained to conduct archaeological fieldwork within the

Stage 3 Archaeological Assessment, Alma Subdivision, H1 (AkHd-4) and H2 (AkHd-5)

Study Area address Aboriginal concerns, including the retaining of on-site monitors during the current Stage 3 assessment, and during any subsequent Stage 4 investigation that may arise from it.

Nevertheless, since any legal or financial agreements between Aboriginal communities and a Proponent fall outside the purview of both the MHSTCI and Cultural Resource Management firms in Ontario, **Detritus cannot compel the Proponent to enter into a monitoring agreement.** Furthermore, since on-site monitors are not mandated by the MHSTCI as part of the Aboriginal engagement process, Detritus has no legal standing to boycott any contracted fieldwork in absence of a monitoring agreement. **However, Detritus has insisted that all applicable Aboriginal communities be granted access to the property throughout the investigation.**

ENGAGEMENT ACTIVITIES

A representative from Detritus will contact your office with a proposed start date for the Stage 3 field assessment (see table below). **In lieu of on-site monitors, Detritus will provide your office with a summary of the Stage 3 results in the form of final field mapping and a description of any diagnostics that are identified in the field.** Detritus is also willing to utilise alternative approaches to share project details, including the use of an online portal, if requested.

Additionally, **your office will be provided with a draft copy of the final Stage 3 report, once completed.** Any input on the contents of the report, in particular the methodology and recommendations, may be made directly to the Project Manager or Licensee (see below for contact information). Finally, your office will be notified if Detritus is retained to conduct any subsequent Stage 4 investigation within the Study Area.

PROJECT CONTACT INFORMATION

For more information on this Stage 1-2 assessment, please do not hesitate to contact either Garth Grimes, the Project Manager, or Walter McCall, the Licensee.

Garth Grimes, BA, BEd.
Company Director
Professional Archaeology License No. P017
Tel: 519-744-7018
Email: garth@golden.net

Walter McCall, PhD
Company Director
Professional Archaeology License No. P389
Tel: 226-922-0297
Email: waltermccall.arch@gmail.com

PROJECT DETAILS

Address:	31 Church Street, Alma
PIF Number:	P389-0628-2022, P389-0629-2022
Licensee:	Walter McCall
Project Manager:	Garth Grimes
Field Director(s):	Isaac Bender
Proposed Start Date:	Week of October 3-7 (weather and field condition dependent)
Expected Duration:	Several days

STUDY AREA LOCATION

Map of the Study Area is on the following page.

Stage 3 Archaeological Assessment, Alma Subdivision, H1 (AkHd-4) and H2 (AkHd-5)

