

**SUPPLEMENTARY DOCUMENTATION**  
**Stage 3 Grave Search**  
**Alma Subdivision**  
**31 Church Street, Alma**

Part of Lots 1–8, 10, 11, 25–35 and  
Part of Lot 9, Registered Plan 134 and  
Lot 1, Concession 1 West of Grand River,  
Geographic Township of Pilkington,  
Township of Mapleton, County of Wellington

**Submitted to:**

Exact Construction Ltd.  
8262 Wellington 19,  
Fergus, Ontario  
N1M 2W4

and

Ontario's Ministry of Citizenship and Multiculturalism

**Submitted by:**



**Detritus**  
CONSULTING LTD.  
*archaeology · heritage*

196 Westheights Drive, Kitchener Ontario, N2N 1J9  
Mobile/Office: 519-744-7018  
e-mail: [garth@golden.net](mailto:garth@golden.net)  
website: [www.detritusconsulting.ca](http://www.detritusconsulting.ca)

Licensee: Garth Grimes  
License Number: P017  
PIF Numbers: P017-1056-2023  
CP Number: 2023-017

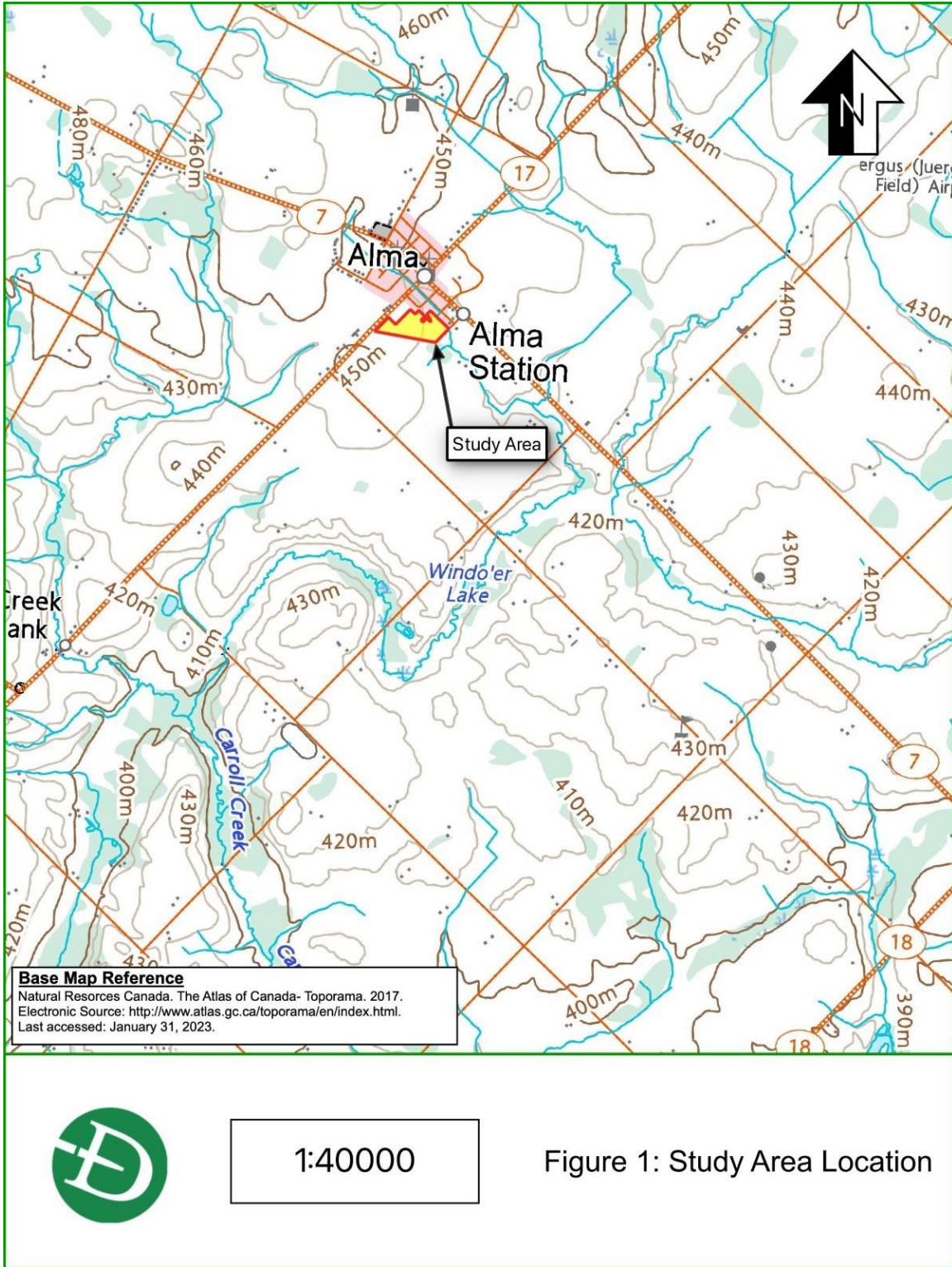
**ORIGINAL SUPPLEMENTARY DOCUMENTATION**

January 18, 2024

## Table of Contents

1.0	Maps.....	3
2.0	Universal Transverse Mercator .....	10
3.0	Aboriginal Engagement .....	11
3.2	Project Memo .....	12

## 1.0 Maps



Stage 3 Grave Search, Alma Subdivision



Not to Scale

Figure 2: Portion of Guy Leslie's 1861 Map of the County of Wellington, Canada West

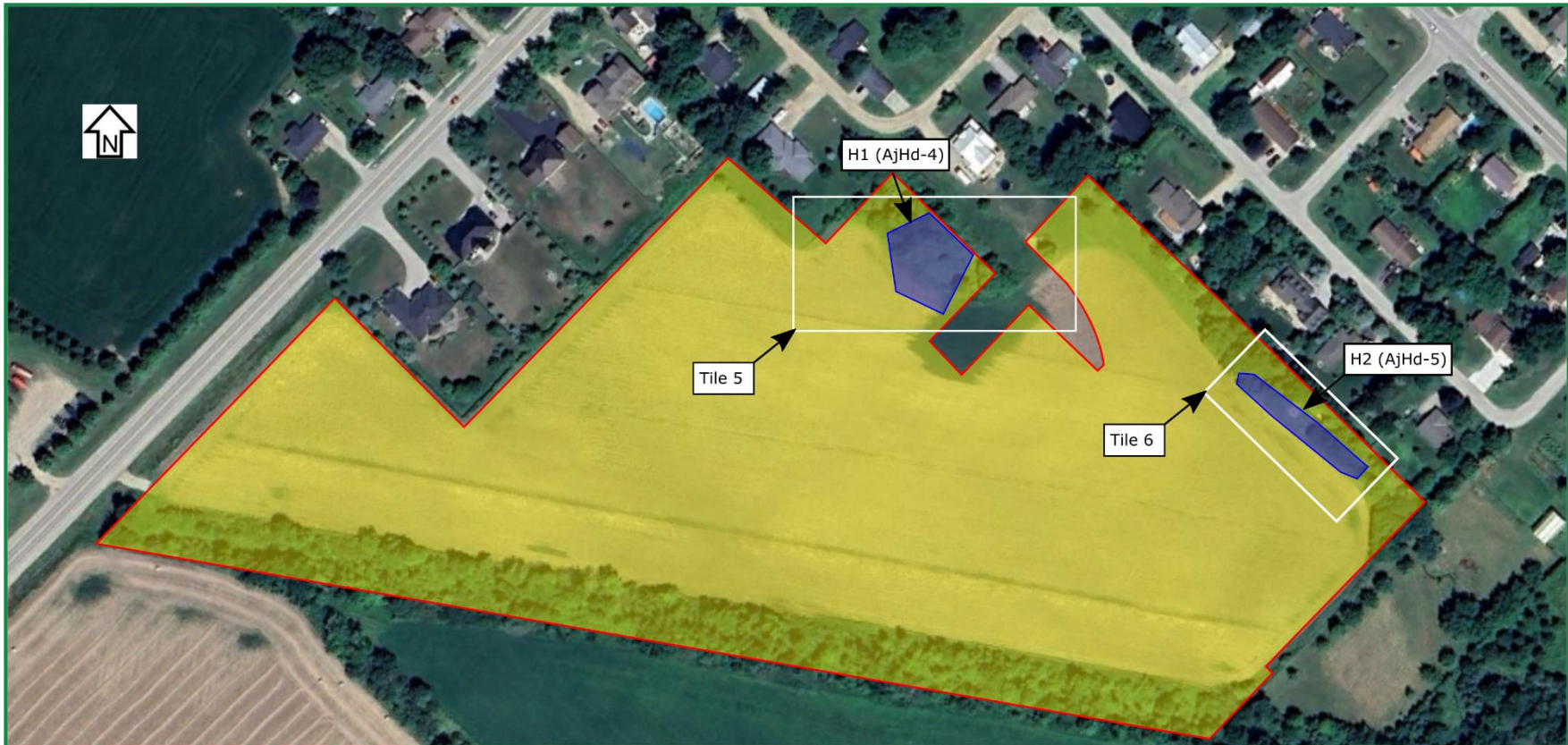
Stage 3 Grave Search, Alma Subdivision



Not to Scale

Figure 3: Portion of Walker and Miles 1877 Illustrated Historical Atlas of the County of Wellington, Ont.

Stage 3 Grave Search, Alma Subdivision



Legend     Study Area     Stage 2 Assessment (Detritus 2023a)

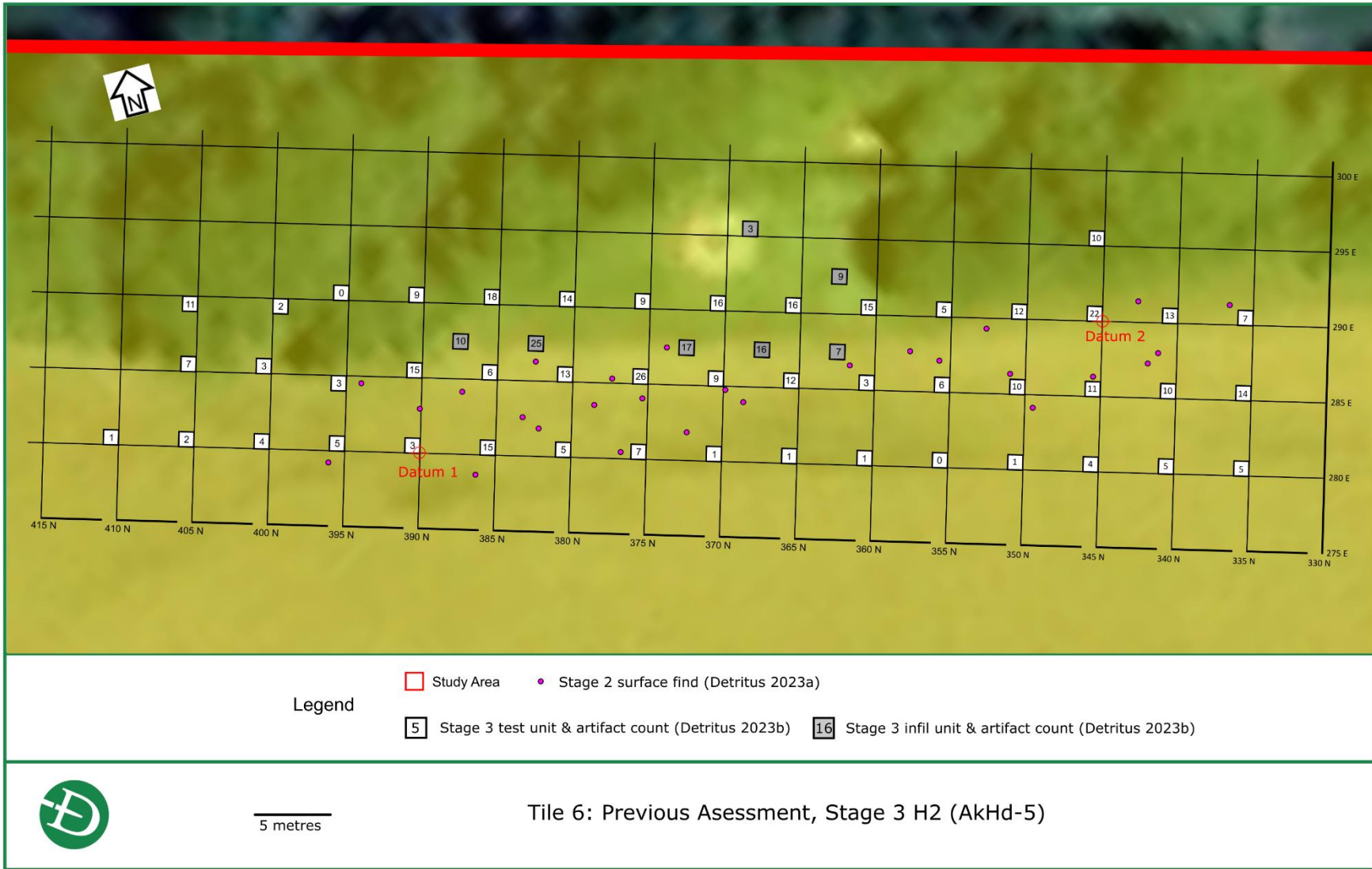


Tile 4: Previous Assessment, Stage 2

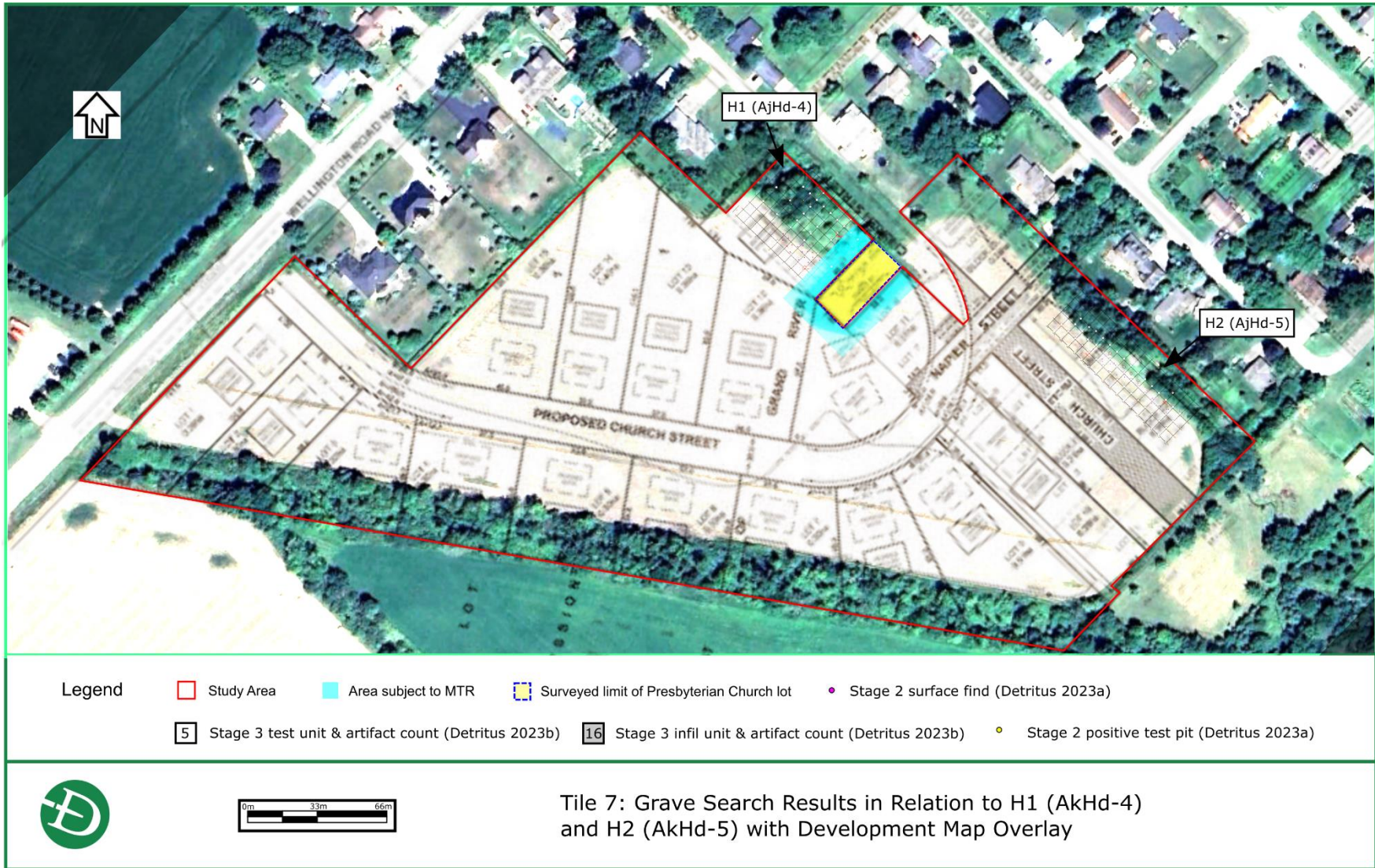
### Stage 3 Grave Search, Alma Subdivision



### Stage 3 Grave Search, Alma Subdivision



Stage 3 Grave Search, Alma Subdivision



Tile 7: Grave Search Results in Relation to H1 (AkHd-4) and H2 (AkHd-5) with Development Map Overlay

## 2.0 Universal Transverse Mercator

The Universal Transverse Mercator ('UTM') coordinates recorded during the Stage 3 assessment are provided below. The UTM coordinates were recorded using a Garmin eTrex Touch 30x GPS unit with a minimum accuracy 3m (North American Datum 1983 ('NAD83') and UTM Zone 17T). The UTM coordinates for the archaeological sites and findspots are presented in

Table 1 below.

**Table 1: UTM Coordinates for the Archaeological Sites AkHd-4 and AkHd-5.**

Site Name	Description	UTM Easting	UTM Northing
H1 (AkHd-4)	North	540043.977683835	4841746.5375406
H1 (AkHd-4)	South	540086.3351716085	4841703.977869114
H1 (AkHd-4)	East	540078.1467312513	4841738.349100242
H1 (AkHd-4)	West	540052.7726753297	4841711.458666477
H1 (AkHd-4)	Centre	540060.5567482618	4841730.362843598
H1 (AkHd-4)	Datum #1	540059.9980847272	4841704.172482643
H1 (AkHd-4)	Datum #2	540082.5500693928	4841723.956516302
H2 (AkHd-5)	North	540188.052546499	4841685.545338387
H2 (AkHd-5)	South	540240.0941852872	4841628.535524058
H2 (AkHd-5)	East	540224.9412498883	4841661.573891403
H2 (AkHd-5)	West	540210.2851320434	4841653.873219315
H2 (AkHd-5)	Centre	540214.3838768644	4841658.841394856
H2 (AkHd-5)	Datum #2	540216.2208650054	4841654.98464957
H2 (AkHd-5)	Datum #1	540236.4662238284	4841639.488667962

### 3.0 Aboriginal Engagement

According to Section 3.4, Standard 2 of the *Standards and Guidelines for Consulting Archaeologists* (Government of Ontario 2011b) and Section 1.1, Standard 1 of the *Engaging Aboriginal Communities in Archaeology* draft technical bulletin (Government of Ontario 2011c), Aboriginal communities must be engaged during a Stage 3 assessment when assessing the cultural heritage value or interest of an Aboriginal archaeological site that is known to have or appears to have sacred or spiritual importance, or is associated with traditional land uses or geographic features of cultural heritage interest, or is the subject of Aboriginal oral histories (Government of Ontario 2011b and 2011c).

Furthermore, Section 3.5, Standard 1 of the *Standards and Guidelines for Consulting Archaeologists* (Government of Ontario 2011b) and Section 1.1, Standard 2i of the *Engaging Aboriginal Communities in Archaeology* draft technical bulletin (Government of Ontario 2011c) states that Aboriginal communities must be engaged following a Stage 3 assessment when formulating Stage 4 mitigation strategies for the following types of Aboriginal archaeological sites:

- a. rare Aboriginal archaeological sites
- b. sites identified as sacred or known to contain human remains
- c. Woodland Aboriginal sites
- d. Aboriginal sites where topsoil stripping is being contemplated
- e. Undisturbed Aboriginal sites
- f. Sites previously identified as being of interest to the Aboriginal community

Section 1.2, Guideline 4 of the *Engaging Aboriginal Communities in Archaeology* draft technical bulletin (Government of Ontario 2011c) goes on to state that Aboriginal engagement is encouraged during a Stage 3 assessment when making recommendations regarding the excavation or preservation of Aboriginal archaeological sites of cultural heritage value or interest other than those identified in the standards listed above, in order to review the recommendations with the relevant Aboriginal communities.

The local First Nation communities of the Six Nations of the Grand River ('SNGR'), the Mississaugas of the Credit First Nation ('MCFN'), and Haudenosaunee Development Institute ('HDI') were contacted on September 13<sup>th</sup>, 2023 via email to inform them of the project, including a proposed start date of the week of September 18<sup>th</sup>. The email also contained a memo outlining Detritus' proposed Stage 3 assessment strategies. The purpose of this memo was to provide local First Nation communities an opportunity to provide input on the assessment strategies. In this memo, First Nation communities were informed that the Proponent was unwilling to share their contact information; however, representatives were welcome on site as unpaid monitors during the assessment. In lieu of monitors on site Detritus agreed to provide First Nation communities with the results of the fieldwork and a copy of the completed report on request.

The Stage 3 Grave Search assessment was conducted on September 23, 2023.

A copy of the project memo can be found below. No other email correspondence arose as a result of this assessment.

## 3.2 Project Memo

Date: **[September 13, 2023]**

RE: Stage 3 Archaeological Assessment, **[31 Church Street, Alma]**

PIF(s): **[P017-1056-2023]**

### INTRODUCTION

Detritus Consulting Ltd. ('Detritus') has been retained to conduct Stage 3 archaeological assessment (Grave Search) at the former St. Andrews Presbyterian Church in Alma in advance of future development on the neighbouring property.

The Stage 3 assessment will be managed by professional archaeological license (P-license) holder **[Garth Grimes]**, and will adhere to the archaeological license report requirements under subsection 65 (1) of the *Ontario Heritage Act* and the Ministry of Citizenship and Multiculturalism's ('MCM') *Standards and Guidelines for Consultant Archaeologists* ('*Standards and Guidelines*'), established in 2011.

### PREVIOUS ASSESSMENTS

**A copy of the Stage 1-2 report accompanies this memo**

### STAGE 3 ASSESSMENT STRATEGY

Given that artifacts were recovered during the Stage 2 assessment, the Stage 3 assessment must also include the mechanical removal of all topsoil, as per Section 2.1.7, Standard 3 of the *Standards and Guidelines* (Government of Ontario, 2011), surrounding the property belonging to the Presbyterian Church, not assessed, between the agricultural field and the overgrown greenspace of the old church in order to reveal any associated subsurface graves. As per Section 4.3, Standard 1, Table 4.1 of the *Standards and Guidelines* (Government of Ontario, 2011), MTR must extend a minimum of 10m beyond uncovered cultural features. According to the MCM's FAQ#12 for Stage 3 assessments, this standard applies also to MTR adjacent to cemetery limits.

This mechanical excavation will be conducted in accordance with Section 4.2.3, Section 4.2.7, and Table 4.1 of the *Standards and Guidelines* (Government of Ontario, 2011). All portions of the Study Area recommended for MTR during the Stage 3 assessment will be subjected to mechanical excavation down to the topsoil/subsoil interface, employing a straight-edged ditching bucket that pulls the soil away from the exposed surface. The subsoil surface will then be immediately shovel-shined and examined for any evidence of graves. If features identified as graves begin to appear within the Study Area, all field work will cease.

Given the proximity of the remains of the old cemetery to the Study Area, even though the church and cemetery have been relocated, there is the possibility of encountering interred human remains. The *Funeral, Burial and Cremation Services Act* (Government of Ontario, 2002) and the *Cemeteries Act* (Government of Ontario, 1990d), when proclaimed in force, require anyone who uncovers a burial site containing human remains to cease fieldwork or construction activities and report the discovery to the appropriate authorities (police or coroner). If the police and coroner decide that the site has no forensic interest, the Registrar of Cemeteries will be notified of the discovery. The site then comes under the jurisdiction of the Registrar, who will notify the site's landowners of their obligations under the *Funeral, Burial and Cremation Services Act*. The terms and conditions of an archaeological license require licensees to comply with all relevant provisions of the *Cemeteries Act* and Ontario Regulation 133/92 (Burial Sites).

### PROPONENT CONTACT INFORMATION

Prior to being retained to complete the current assessment, Detritus informed the Proponent of their current Indigenous Engagement policies. As part of this communication, Detritus expressed

## Stage 3 Grave Search, Alma Subdivision

to the Proponent the expectation among local Indigenous communities that representatives be retained as paid on-site monitors during all archaeological field assessments, including the current Stage 3 fieldwork. Additionally, Detritus has informed the Proponent of the MCM's expectation that any Cultural Resource Management ('CRM') firm retained to conduct archaeological fieldwork in Ontario to address Indigenous concerns, which may include the retaining of on-site monitors. Therefore, as part of their obligation to engage, Detritus has encouraged the Proponent to provide your office with their contact information in advance of the current Stage 3 fieldwork.

**Despite our petition, the Proponent has not agreed to provide contact information at this time.**

### ENGAGEMENT ACTIVITIES

**Your office will be provided with a draft copy of the final Stage 3 report on request once completed, prior to its submission to the MCM.** Any input on the contents of the report, in particular the methodology and recommendations, may be made directly to the Project Manager or Licensee (see below for contact information). Finally, your office will be notified if Detritus is retained to conduct any subsequent investigation within the Study Area.

### PROJECT CONTACT INFORMATION

For more information on this Stage 3 assessment, please do not hesitate to contact the either (**Garth Grimes**) the Project Manager, or (**Garth Grimes**) the Licensee.

Garth Grimes, BA, BEd.  
Company Director  
Professional Archaeology License No. P017  
Tel: 519-744-7018  
Email: [garth@golden.net](mailto:garth@golden.net)

Walter McCall, PhD  
Company Director  
Professional Archaeology License No. P389  
Tel: 226-922-0297  
Email: [waltermccall.arch@gmail.com](mailto:waltermccall.arch@gmail.com)

Michael Pitul, MA  
Project Manager  
Professional Archaeology License No. P462  
Tel: 905-931-1071  
Email: [mikepitul.arch@outlook.com](mailto:mikepitul.arch@outlook.com)

### PROJECT DETAILS

Address:	<b>31 Church Street Alma</b>
PIF Number:	<b>P017-1056-2023</b>
Licensee:	<b>Garth Grimes</b>
Project Manager:	<b>Garth Grimes</b>
Field Director(s):	<b>Jon Cousins R296</b>
Proposed Start Date:	September 18 , 2023
Expected Duration:	2-3 days