

County of Wellington

Housing Services

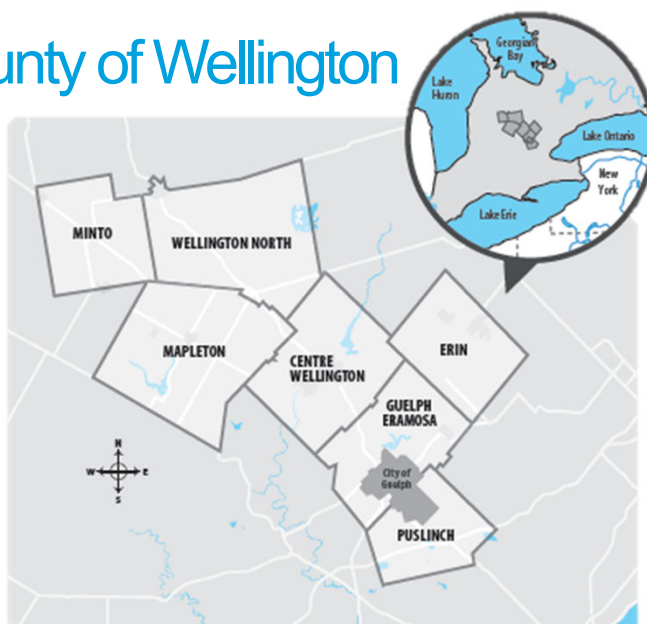


Affordable Housing Information Session



1

County of Wellington



2

County of Wellington Housing Need and Demand

FIGURE 2: Total Households

Sources: Statistics Canada

85,280



Structural Type



63%

Single Detached



30%

Other Attached
(row, duplex, apartment with less than 5 storeys, etc.)



7%

Apartment
with 5 or more storeys

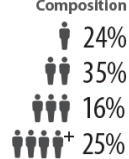
Tenure



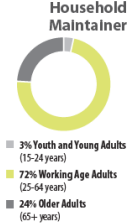
Average Household Size



Household Composition



Age of Primary Household Maintainer



006-2041

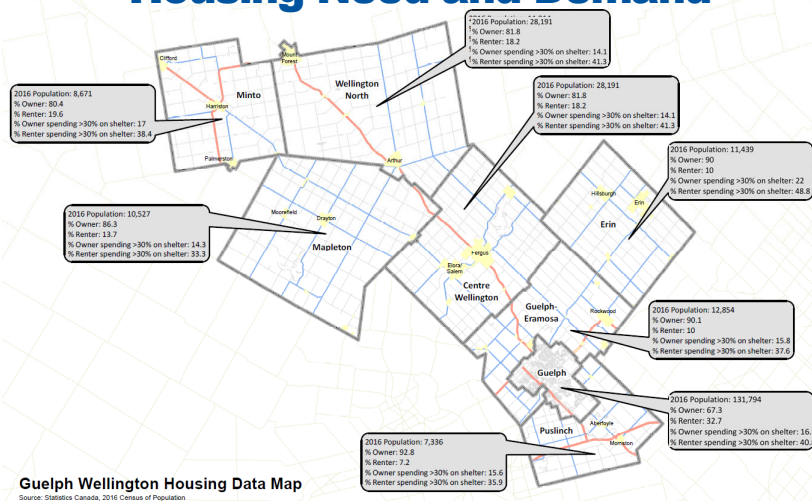


NOTE: Data may not add up to 100% due to rounding



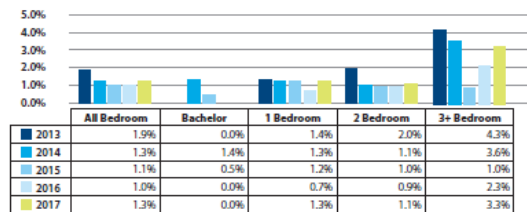
3

County of Wellington Housing Need and Demand



4

County of Wellington Housing Need and Demand



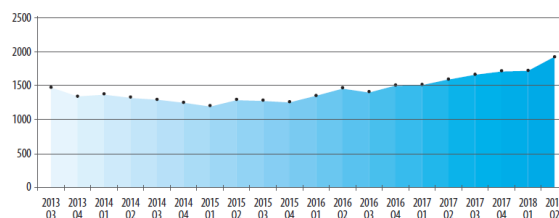
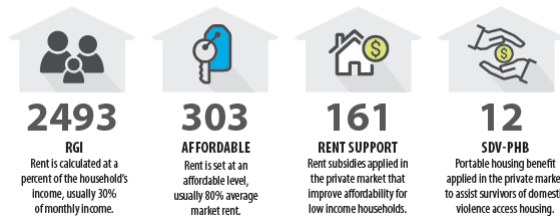
Source: Ministry of Municipal Affairs and Housing, 2018 Housing Data for Service Managers, based on Canada Mortgage and Housing Corporation Rental Market Survey, 2013-2017
Rental Market Survey, 2013-2017



5

County of Wellington Housing Need and Demand

Total Households Assisted in 2017 (by housing type)



6

County of Wellington

Homelessness

EVERYONE COUNTS:

2018 GUELPH-WELLINGTON POINT-IN-TIME COUNT

FIGURE 2. NUMBER OF PERSONS EXPERIENCING HOMELESSNESS, BY AREA AND SHELTER STATUS

	GUELPH	WELLINGTON
TEMPORARILY SHELTERED	136	41
EMERGENCY SHELTERED	71	2
UNSHelterED	39	5
OTHER	15	13
TOTAL	261	61
PERCENT	81%	19%

n=322.



7

County of Wellington

Our Plan



8

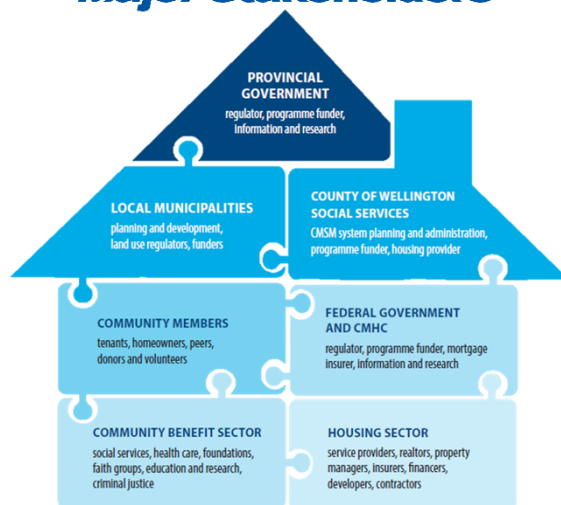
County of Wellington Our Goals

The updated strategic objectives for 2019-2023 are as follows:

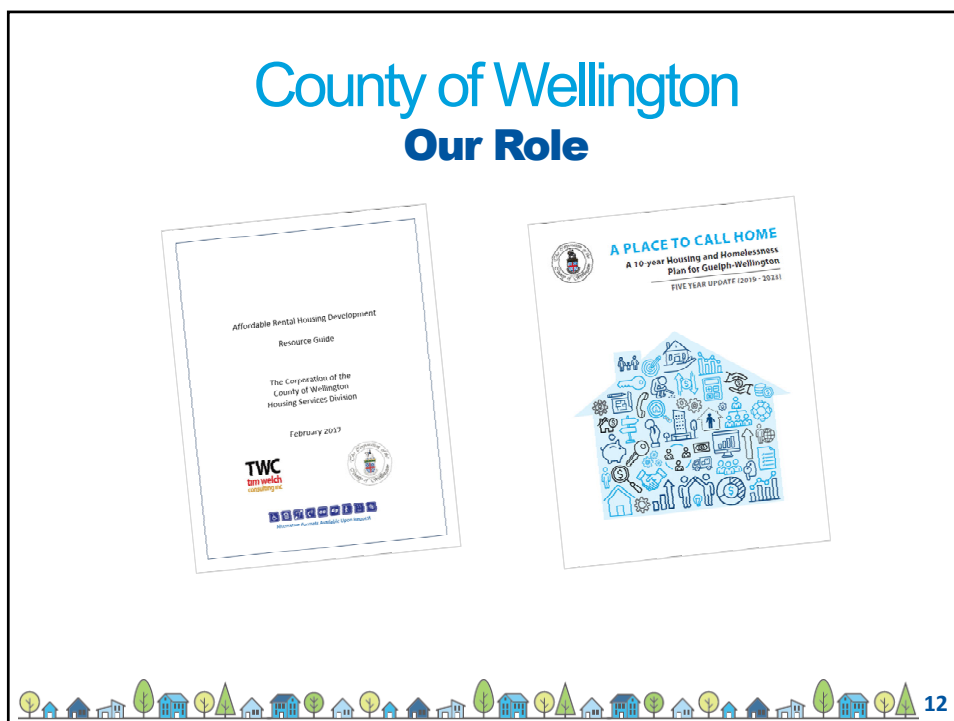
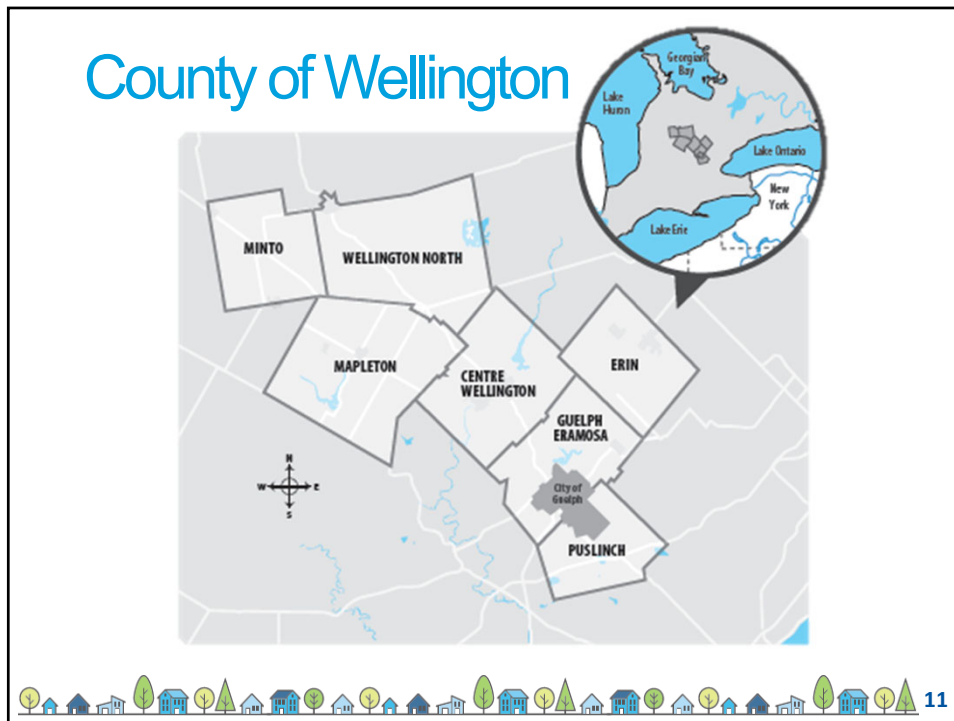
1	To help low-income households close the gap between their incomes and housing expenses.
2	To provide a range of housing stability supports to assist with housing retention and homelessness prevention.
3	To offer a comprehensive range of supportive housing options for residents with complex needs due to aging, disabilities, mental health issues and addictions.
4	To increase the supply and mix of affordable housing options for low- to moderate-income households.
5	To end chronic homelessness.
6	To promote client-centred, coordinated access to the housing and homelessness system.
7	To support the sustainability of the existing social and affordable housing stock.
8	To foster access to culturally appropriate housing and homelessness services for Indigenous peoples.

9

County of Wellington Major Stakeholders



10



County of Wellington

Our Role

Possible Data Source:

Ontario Affordable Housing Calculator: <https://www.evergreen.ca/tools-publications/ontario-affordable-housing-calculator/>

Canadian Rental Housing Index: <http://www.rentalhousingindex.ca/en/#intro>

Public Health Data Portal - WDG Public Health's Interactive

Reports: <https://bi.wdgpulichealth.ca/>

Census: <https://www12.statcan.gc.ca/census-recensement/index-eng.cfm>

20K Homes: <http://www.20khomes.ca/>

LHIN: http://www.waterloowellingtonlhin.on.ca/goalsandachievements/2018-19_strategicpriorities.aspx



13

County of Wellington

Our Experience

250 Daly Street
Palmerston North - 11 UNITS

COUNTY OF WELLINGTON HOUSING SERVICES

250 Daly Street
Palmerston North - 11 UNITS

Building information:

- two story apartment building
- 6 - three-bedroom apartments
- 5 - two-bedroom apartments
 - 1 - two-bedroom barrier free modified unit
- affordable rents include all utilities except telephone, cable and internet
- elevator
- air conditioning
- laundry room facilities

Webster Place
Wellington Street - 10 UNITS

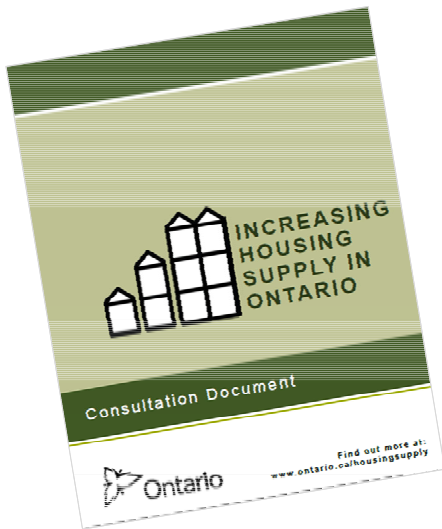
Building information:

- four storey apartment building
- 39 - one-bedroom apartments
- 8 - two-bedroom apartments
- 6 - one-bedroom barrier free modified units
- 2 - two-bedroom barrier free modified units
- affordable rents include all utilities except telephone, cable and internet
- elevator
- air conditioning
- laundry room facilities on every floor
- personal storage and scooter storage on every floor



14

County of Wellington



Consultation closing date:
January 25, 2019



Questions: County of Wellington Housing Services

