

Erin

Residential Supply Maps

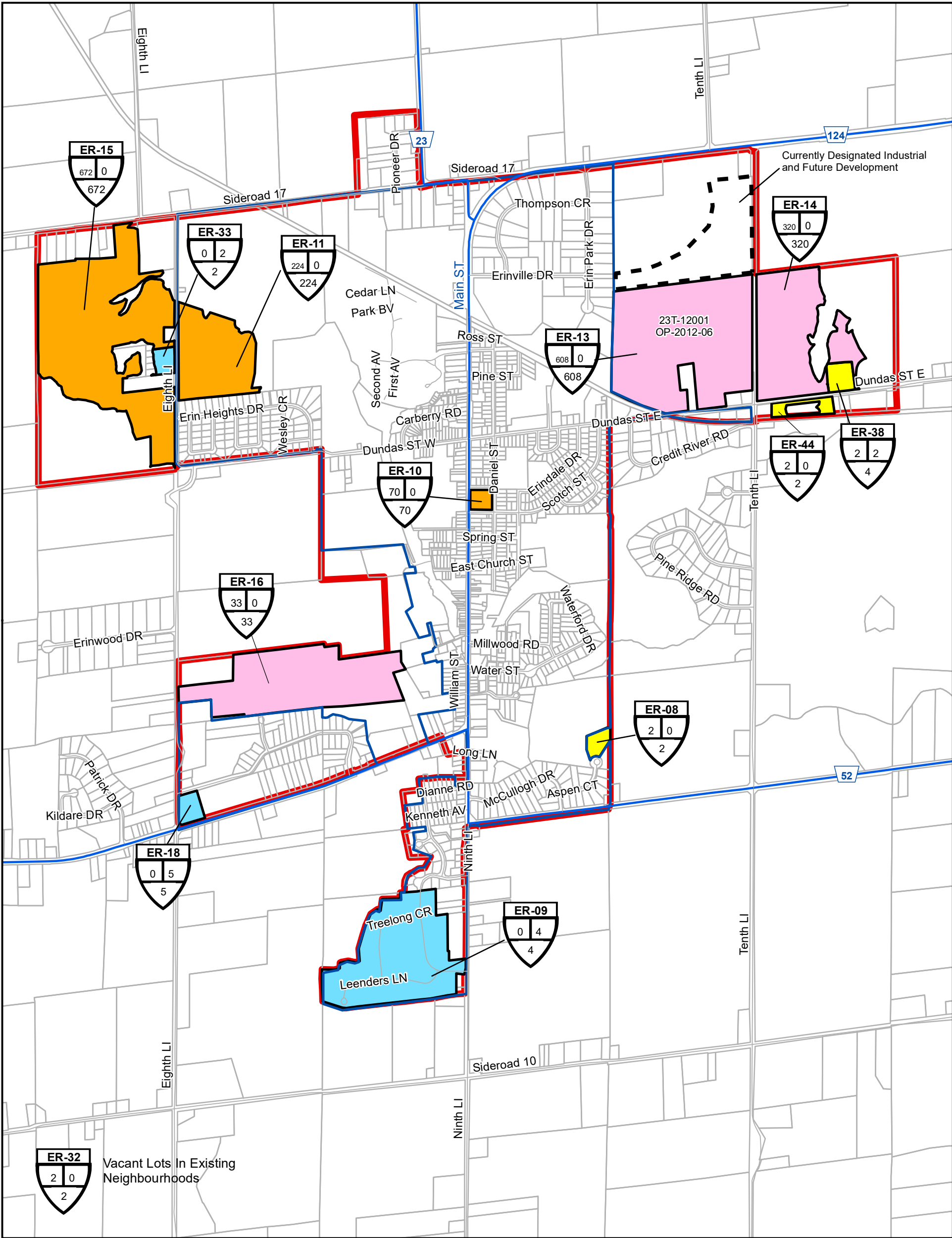
As of July 1, 2019

ERIN WELLINGTON LAND BUDGET
LONG TERM RESIDENTIAL UNIT SUPPLY By Category (as of July 2019)

Vacant & Potential Supply					
Area	Registered	Draft Approved or Provisional	Applications Under Review	Vacant Designated	TOTAL UNITS
URBAN CENTRES	12	96	1604	1814	3526
Erin Village	8		961	966	1935
Hillsburgh	4	96	643	848	1591
OUTSIDE URBAN CENTRES	108	61	0	208	377
Brisbane	1			43	44
Ballinafad	9				9
Cedar Valley					0
Countryside	97			149	246
Crewson's Corner					0
Ospringe	1	60		8	69
Rural Estate		1		8	9
MUNICIPAL TOTAL	120	157	1604	2022	3903

NOTES:

1. The unit yields identified on the maps and in the summary table assume full municipal servicing to lands within the urban centres of Hillsburgh and Erin and are provided for information purposes.
2. It is Important to note that the potential supply of units exceeds the total potential growth for the Town of Erin to 2041 as determined through OPA 99. The Town of Erin is required to amend its official plan to confirm the future growth forecasts to be assigned to Hillsburgh and Erin within the ranges of projected growth specified in Table 7 of the County Official Plan.
3. The figures contained in the table and maps are subject to change during the Municipal Comprehensive Review (MCR).
4. The figures contained in the table do not include lands designated future development.

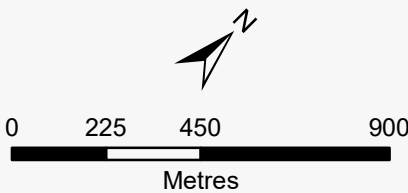


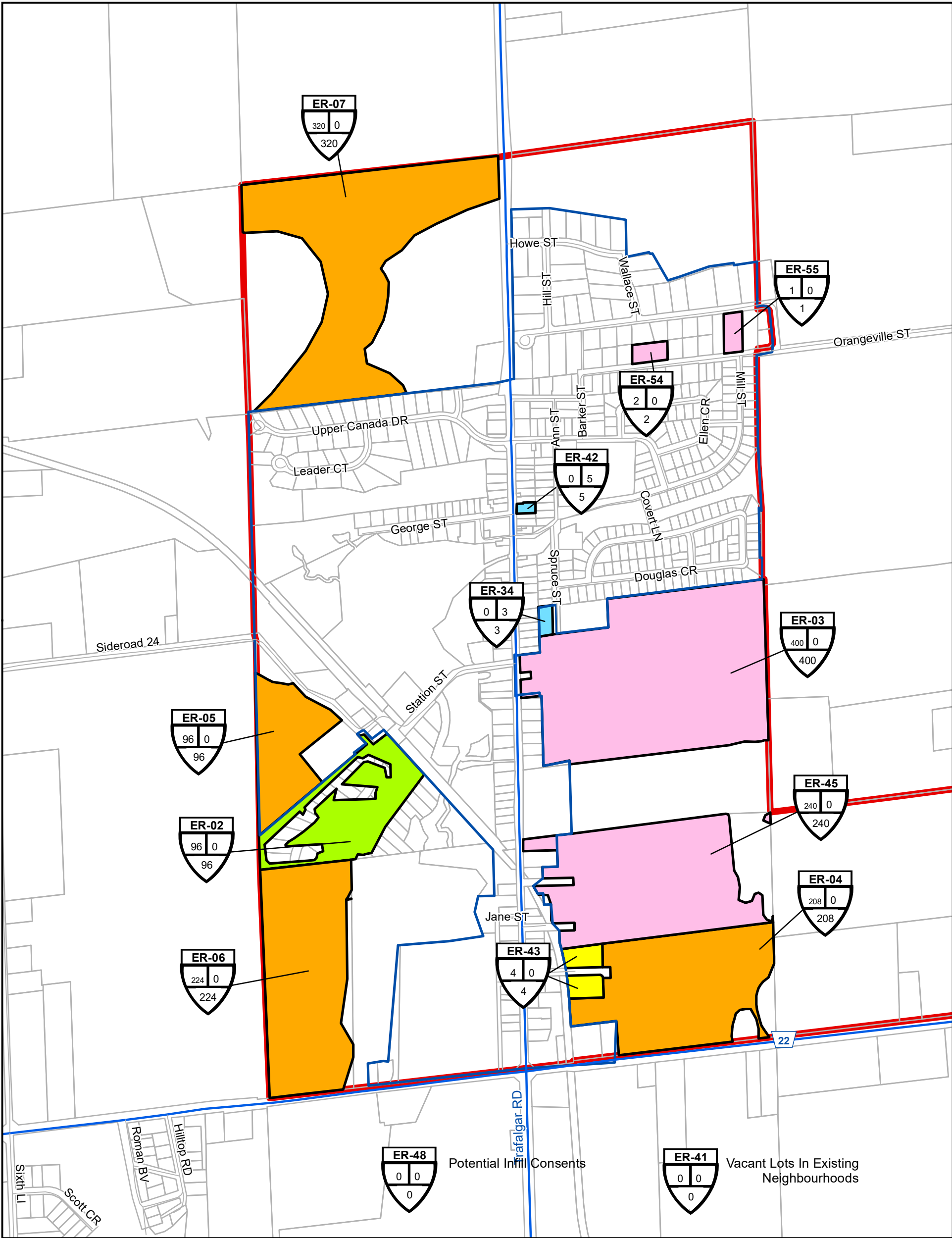
Residential Supply Category

- Vacant Designated
- Application Under Review
- Draft Approved Or Provisional
- Registered
- Built Out Since 2011
- Built Boundary

Map ID
MI-35
Building Permit
Issued between
July 1, 2011 and
June 30, 2019
Total Supply as of
July 1, 2011
121 13
134
Vacant or
Potential
Units as of
July 1,
2019

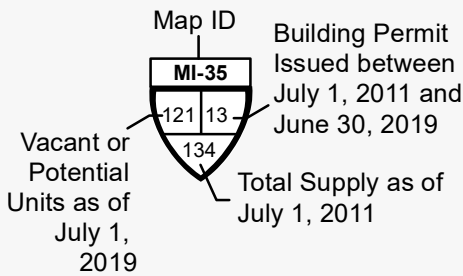
Village of Erin Residential Supply Inventory with Built Boundary



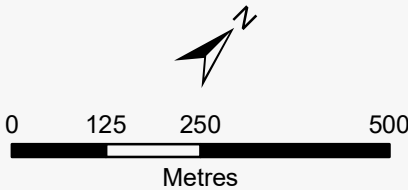


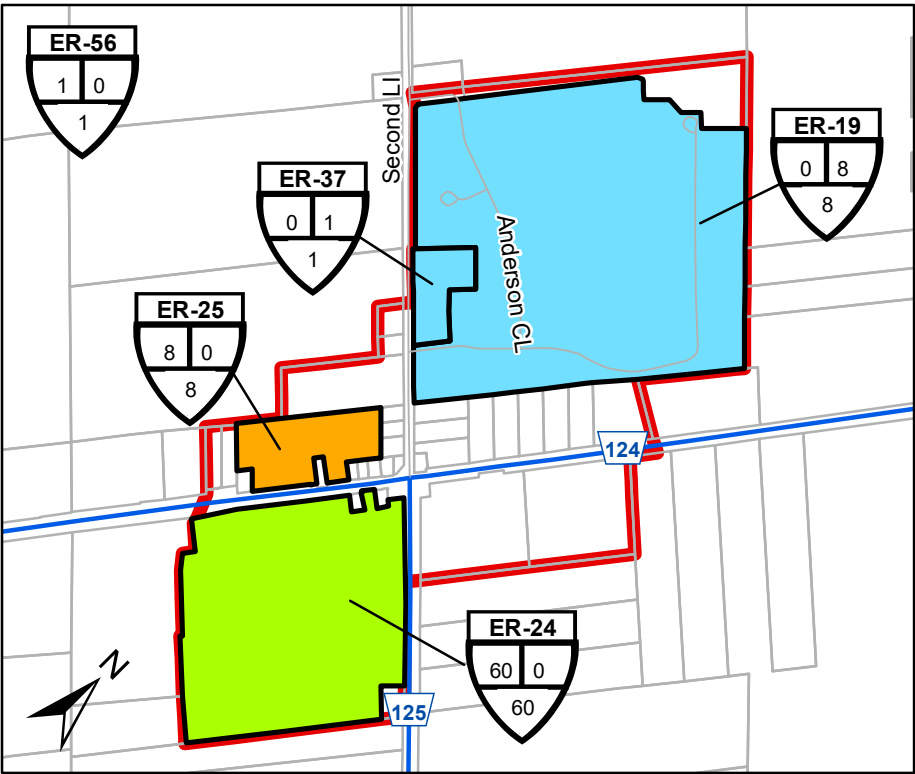
Residential Supply Category

- Vacant Designated
- Application Under Review
- Draft Approved Or Provisional
- Registered
- Built Out Since 2011
- Built Boundary

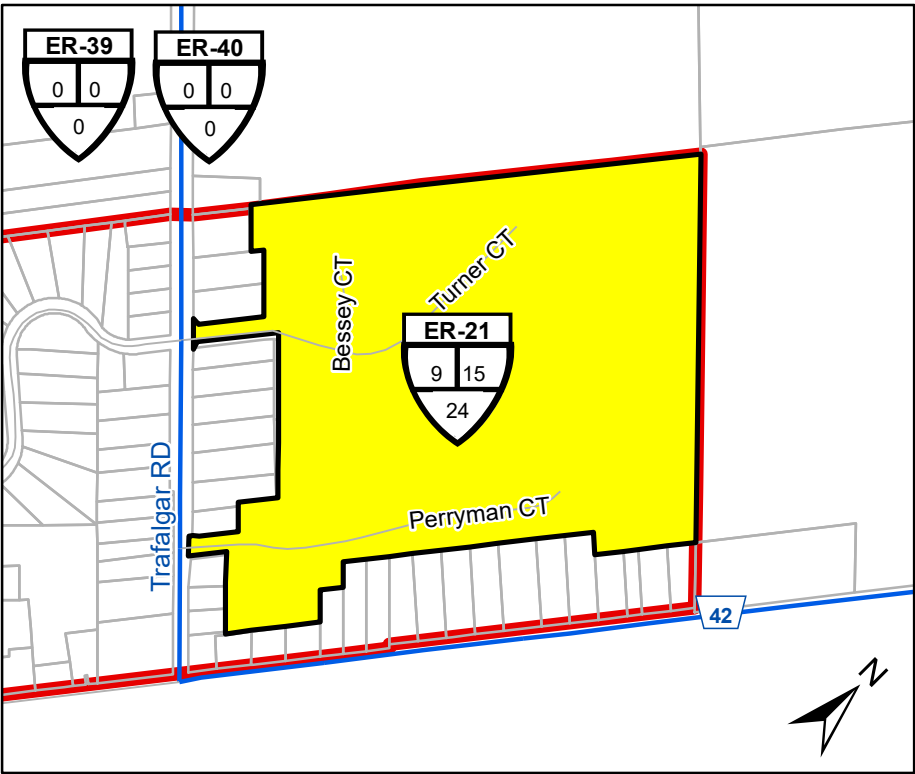


Hillsburgh Residential Supply Inventory with Built Boundary

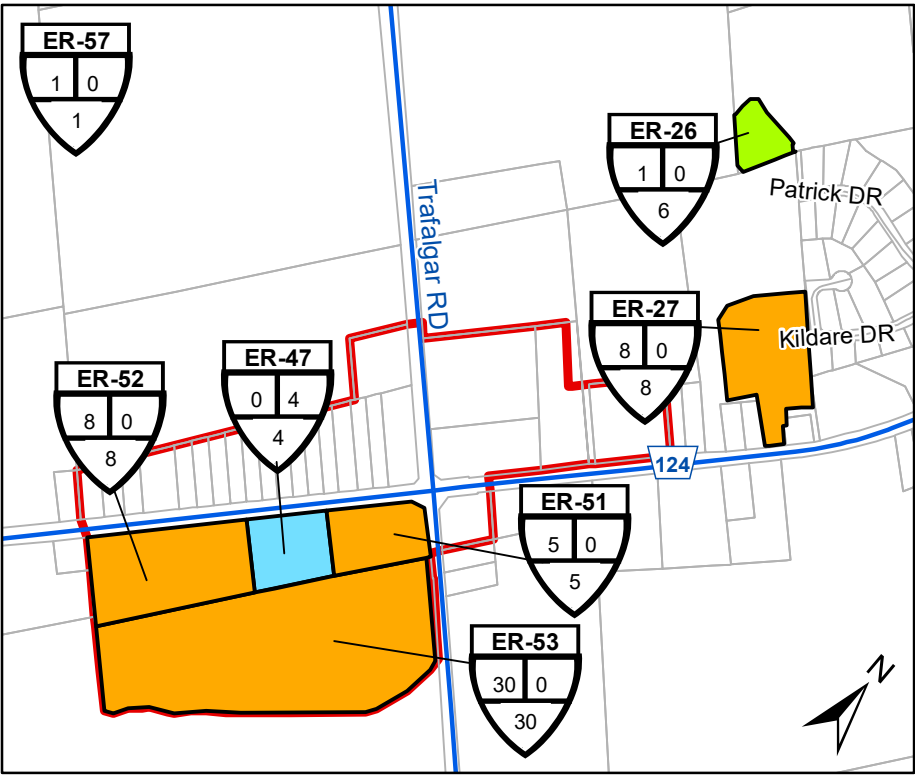




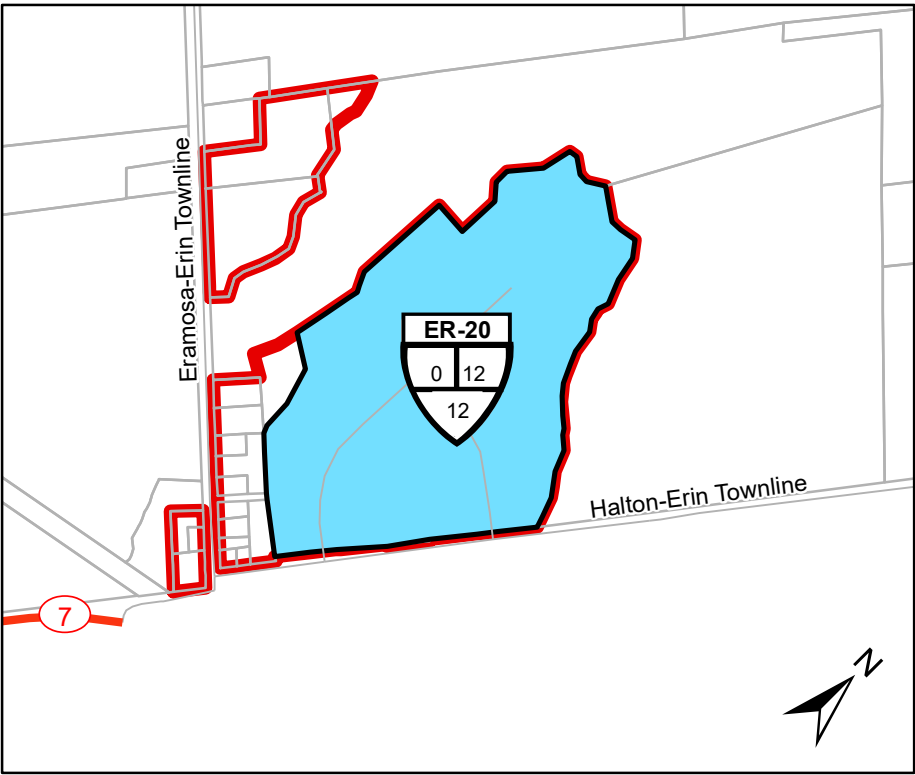
Madison Lake Estates (ER-19), Thomasfield Homes LTD (ER-24), Ospringle NW (ER-25), Vacant Lots in Ospringle (ER-56) and Second Line Vacant Lots (ER-37)



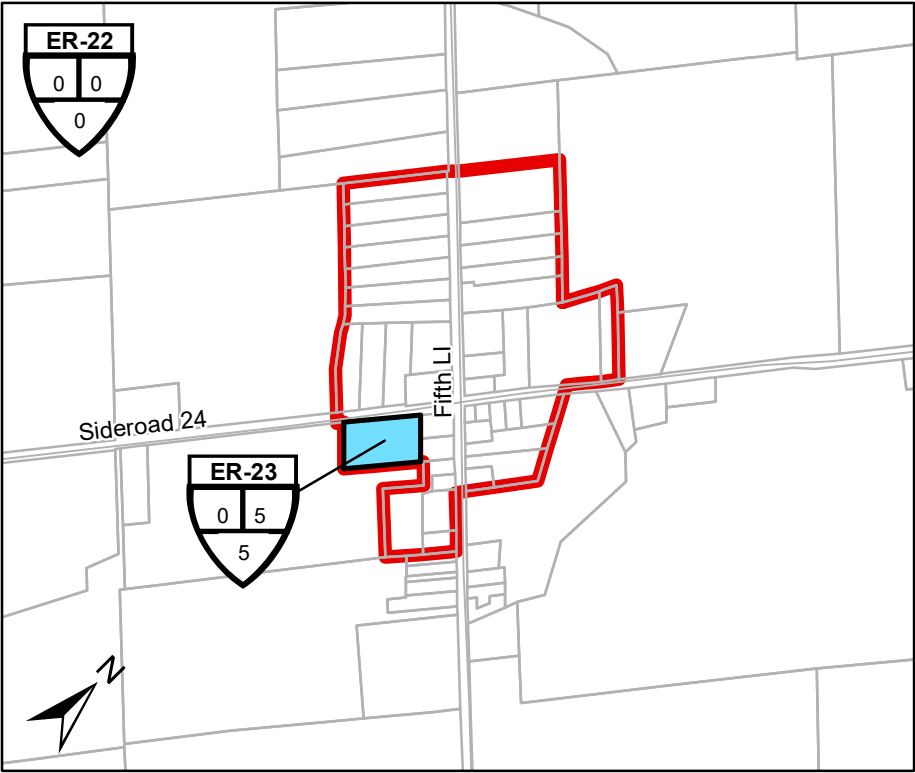
Silvercreek Meadows (ER-21), Vacant Lots in Ballinafad (ER-39) and Accessory Apartments in Ballinafad (ER-40)



Sopinka/Reed (ER-26), Van Miller (ER-27), 124 Severances (ER-47), John Cook Sevs 124 & 25 (ER-51), John Cook Sevs 124 (ER-52), David Cook (ER-53) and Vacant Lots in Brisbane (ER-57)



Crewson's Ridge (ER-20)

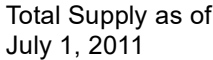
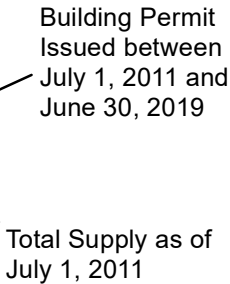
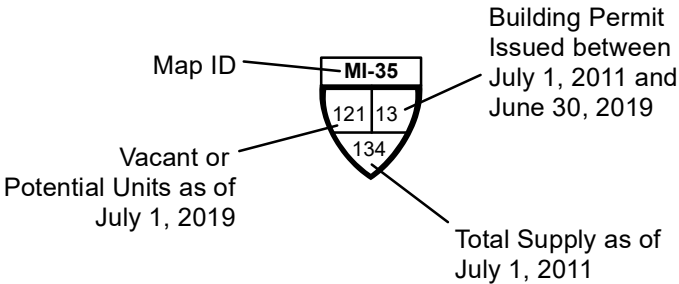


Cedar Valley Severances Along SR 24 (ER-23) and Cedar Valley Vacant Lots (ER-22)



Town of Erin Rural Residential Supply Inventory

THIS IS NOT SURVEY DATA
Parcels - Teranet 2002, County of Wellington 2015
Roads - County of Wellington, 2015
Includes material © 2015 of the Queen's Printer for Ontario. All Rights Reserved.



- ### Residential Supply
- Vacant Designated
 - Application Under Review
 - Draft Approved Or Provisional
 - Registered
 - Built Out Since 2011
 - Built Boundary

Erin

Employment Supply Maps

As of July 1, 2019

Employment Lands Summary
July 2019

Erin

All values are in acres

	Highway Commercial					Industrial					Rural Employment				
	Absorbed since 2011	Occupied	Vacant Designated	TOTAL DESIGNATED AREA	Vacant Developable Area	Absorbed since 2011	Occupied	Vacant Designated	TOTAL DESIGNATED AREA	Vacant Developable Area	Absorbed since 2011	Occupied	Vacant Designated	TOTAL DESIGNATED AREA	Vacant Developable Area
Erin	2.80	38.23	49.60	90.63	41.00	14.79	154.54	86.28	255.61	74.92					
Erin Village	2.80	27.25	49.60	79.65	41.00	14.79	154.54	66.64	235.97	59.21					
Erin Park Employment Lands	2.80	14.71	19.59	37.10	16.39	10.08	69.89	23.02	102.99	23.02					
Erin Settlement Expansion Employment Lands			23.77	23.77	19.41			37.15	37.15	29.72					
Highway Commercial Lands in Erin Village		6.33	5.22	11.55	4.18										
Pioneer Drive Industrial Area						4.71	15.17	4.09	23.97	4.09					
Sideroad 17 Employment Lands		6.21	1.02	7.23	1.02		69.48	2.38	71.86	2.38					
Hillsburgh	0.00	10.98	0.00	10.98	0.00	0.00	0.00	19.64	19.64	15.71					
Highway Commercial Lands in Hillsburgh		10.98		10.98											
Industrial Lands in Hillsburgh								19.64	19.64	15.71					

NOTES:

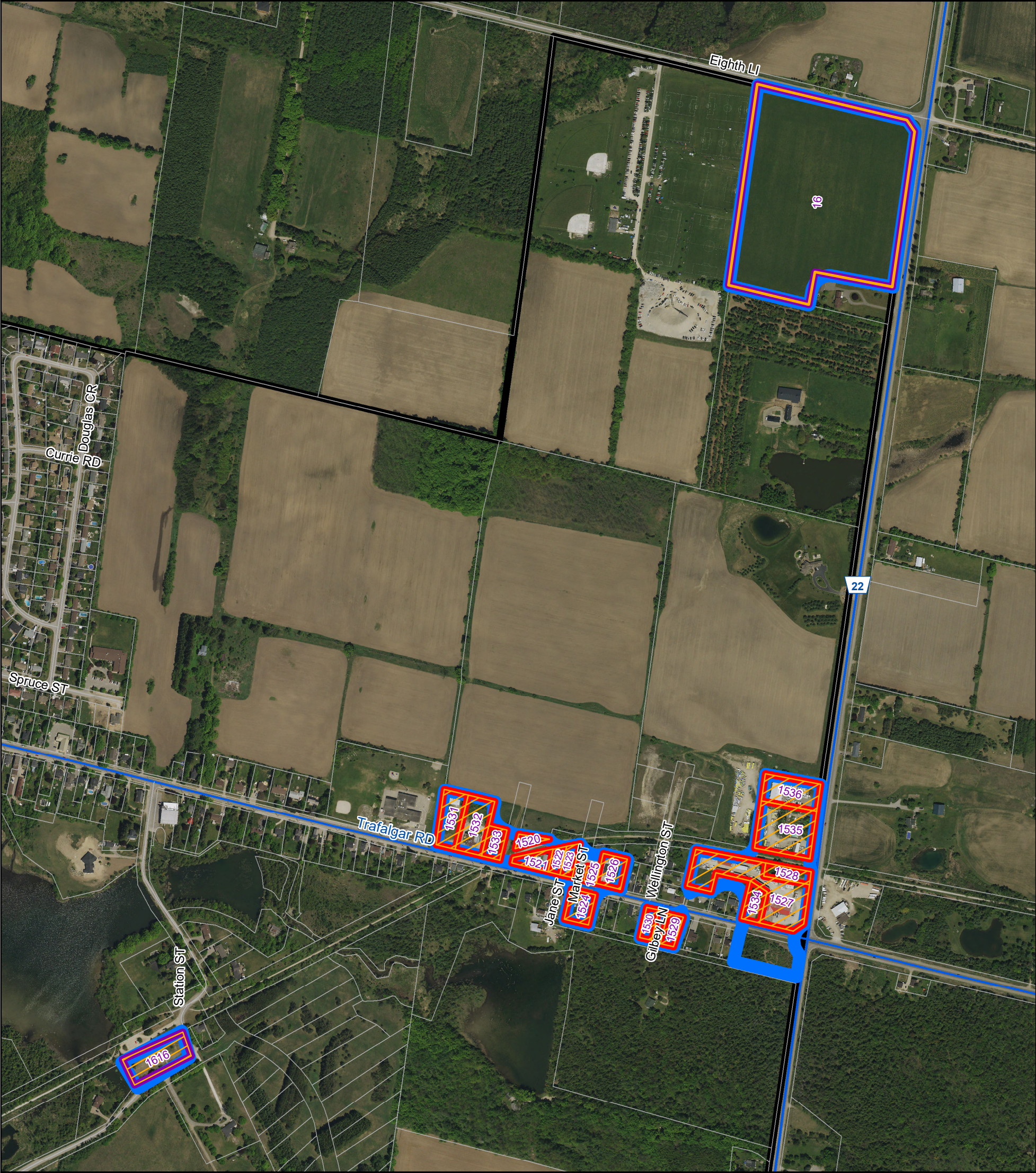
1. The unit yields identified on the maps and in the summary table assume full municipal servicing to lands within the urban centres of Hillsburgh and Erin and are provided for information purposes.

2. It is Important to note that the potential supply of units exceeds the total potential growth for the Town of Erin to 2041 as determined through OPA 99. The Town of Erin is required to amend its official plan to confirm the future growth forecasts to be assigned to Hillsburgh and Erin within the ranges of projected growth specified in Table 7 of the County Official Plan.

3. The figures contained in the table and maps are subject to change during the Municipal Comprehensive Review (MCR).”

4. The figures contained in the table do not include lands designated future development.

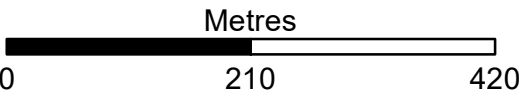
Employment Lands in Hillsburgh



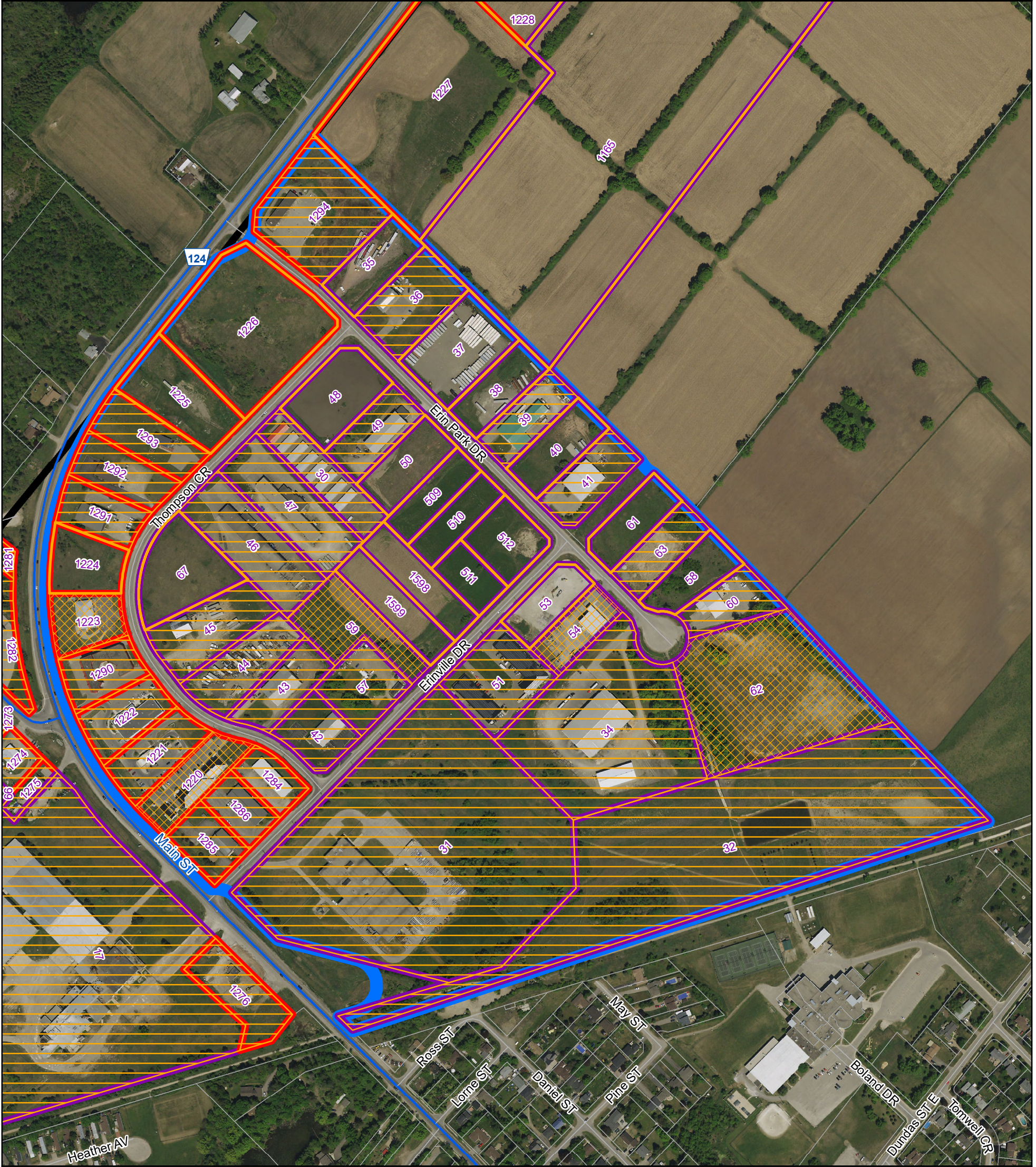
Legend

- 123 Identification Number
- Industrial
- Highway Commercial
- Vacant
- Absorbed since January 2011
- Built Prior to January 2011
- Employment Map Areas

Erin
Hillsburgh



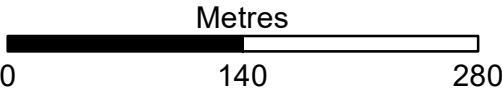
Erin Park Employment Lands



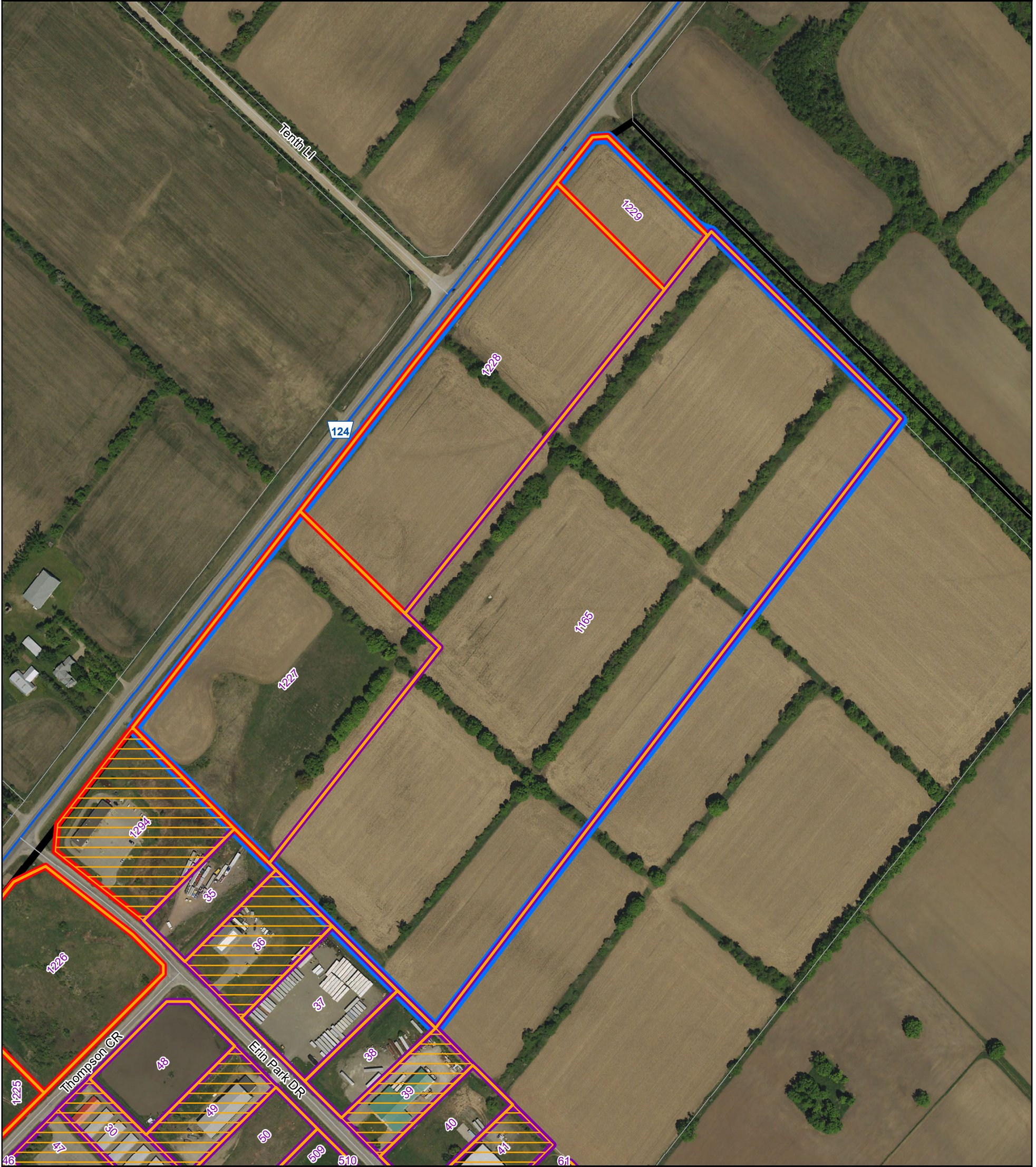
Legend

- 123 Identification Number
- Industrial
- Highway Commercial
- Vacant
- Absorbed since January 2011
- Built Prior to January 2011
- Employment Map Areas

Erin
Erin Village



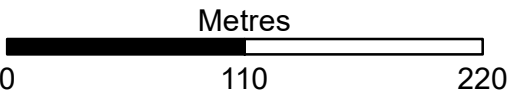
Erin Settlement Expansion Employment Lands



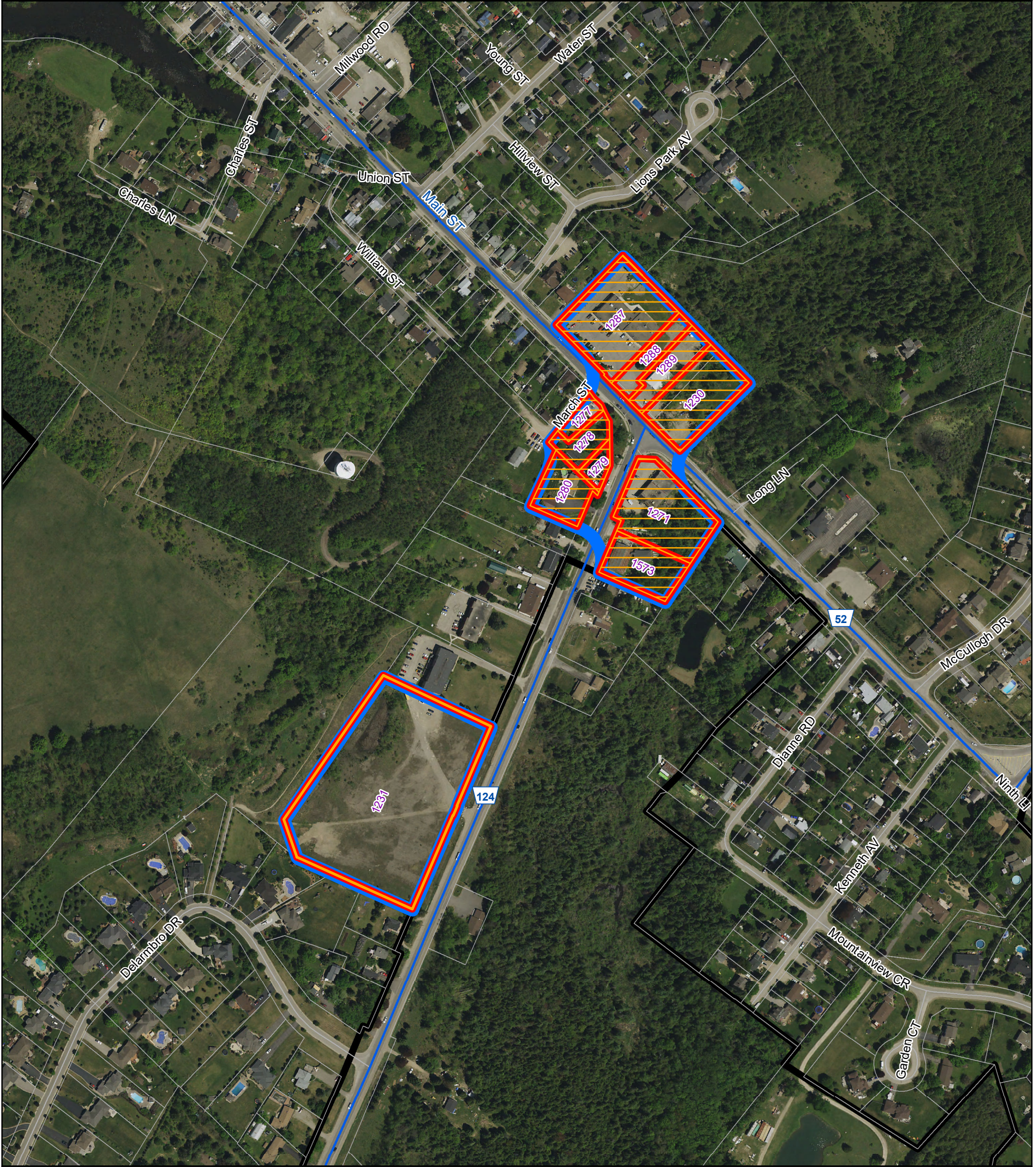
Legend

- 123** Identification Number
- Industrial
- Highway Commercial
- Vacant
- Absorbed since January 2011
- Built Prior to January 2011
- Employment Map Areas

Erin Erin Village



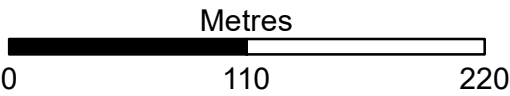
Highway Commercial Lands in Erin Village (South)



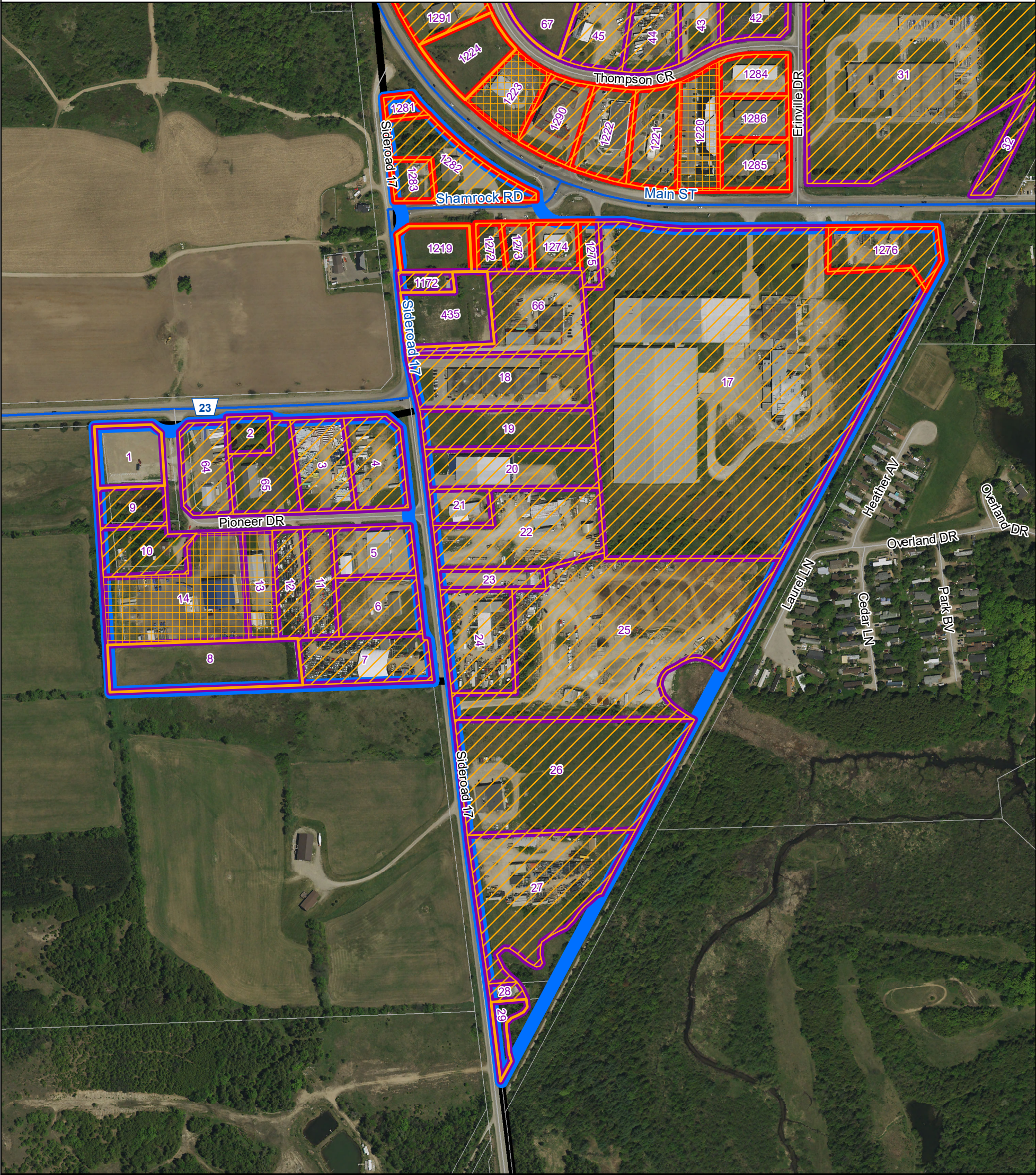
Legend

- 123** Identification Number
- Industrial
- Highway Commercial
- Vacant
- Absorbed since January 2011
- Built Prior to January 2011
- Employment Map Areas

Erin
Erin Village



Sideroad 17 & Pioneer Drive Employment Areas



Legend

- 123 Identification Number
- Industrial
- Highway Commercial
- Vacant
- Absorbed since January 2011
- Built Prior to January 2011
- Employment Map Areas

Erin
Erin Village

