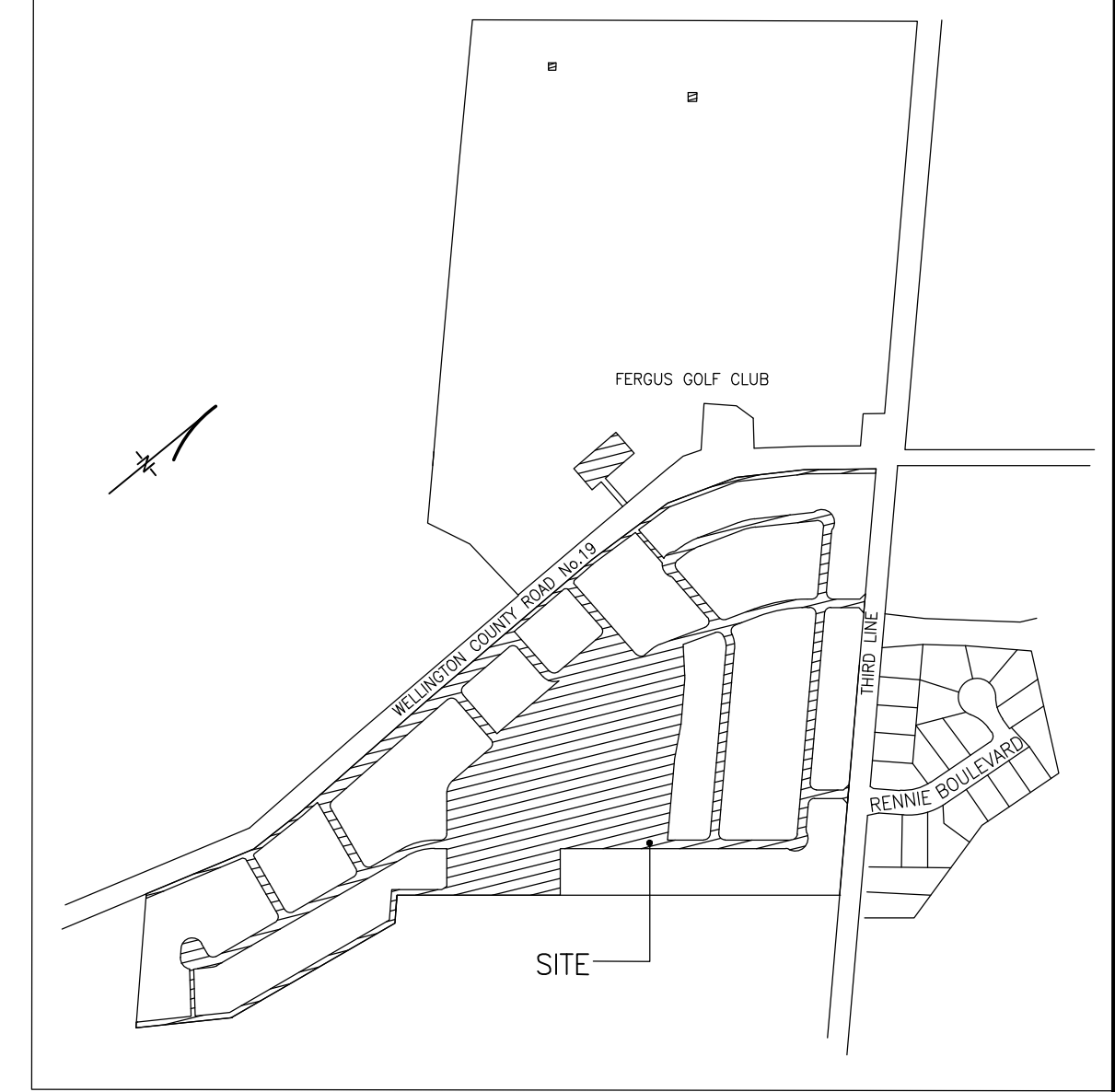


**DRAFT PLAN OF
COMMON ELEMENTS CONDOMINIUM OF
PART OF BLOCKS 1 AND 2,
PLAN 62M-xxx
TOWNSHIP OF CENTRE WELLINGTON
COUNTY OF WELLINGTON**

SHEET 1 OF 2 SHEETS



SCALE 1:1500
METRIC
DISTANCES AND COORDINATES SHOWN ON THIS PLAN ARE IN METRES AND CAN BE CONVERTED TO FEET BY DIVIDING BY 0.3048.

NOTES
--- DENOTES EXTENT OF LANDS OWNED BY APPLICANT
P.L.N. DENOTES PROPERTY IDENTIFIER NUMBER

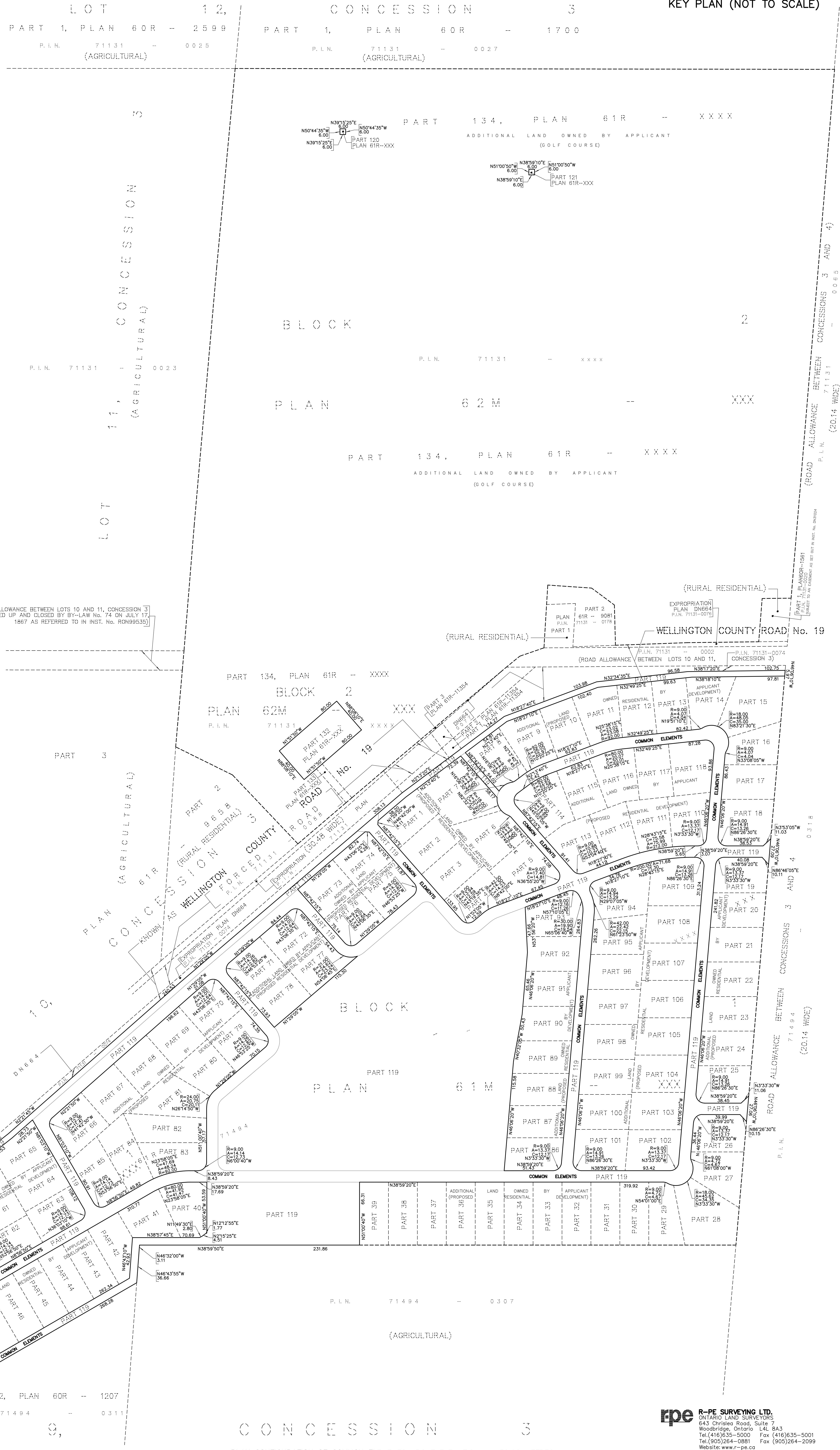
SURVEYOR'S CERTIFICATE
I CERTIFY THAT THE BOUNDARIES OF THE LANDS TO BE SUBDIVIDED AND THEIR RELATIONSHIP TO THE ADJOINING LANDS ARE ACCURATELY AND CORRECTLY SHOWN.

DATE: FEBRUARY 13TH 2022
C. P. EDWARD
ONTARIO LAND SURVEYOR

OWNER'S CERTIFICATE
I AUTHORIZE R-PE SURVEYING LTD., O.L.S. TO PREPARE AND SUBMIT THIS DRAFT PLAN OF COMMON ELEMENTS CONDOMINIUM TO THE TOWNSHIP OF CENTRE WELLINGTON FOR APPROVAL.
DATE: FEBRUARY 17TH 2022
883890 ONTARIO LIMITED
SHAWN EVANS
AUTHORIZED SIGNING OFFICER
I HAVE THE AUTHORITY TO BIND THE CORPORATION

ADDITIONAL INFORMATION AS REQUIRED BY SECTION 51(17) OF THE PLANNING ACT
(a) SEE PLAN
(b) SEE PLAN
(c) SEE PLAN AND KEY PLAN
(d) THE LAND IS TO BE USED ACCORDING TO THE SCHEDULE OF LAND USE
(e) SEE PLAN
(f) SEE PLAN AND KEY PLAN
(g) PRIVATE WATER SUPPLY
(h) CLAY
(i) SEE PREVIOUS APPROVED DRAFT PLAN
(j) PRIVATE SANITARY SYSTEM
(k) NO RESTRICTIVE COVENANTS OR EASEMENTS

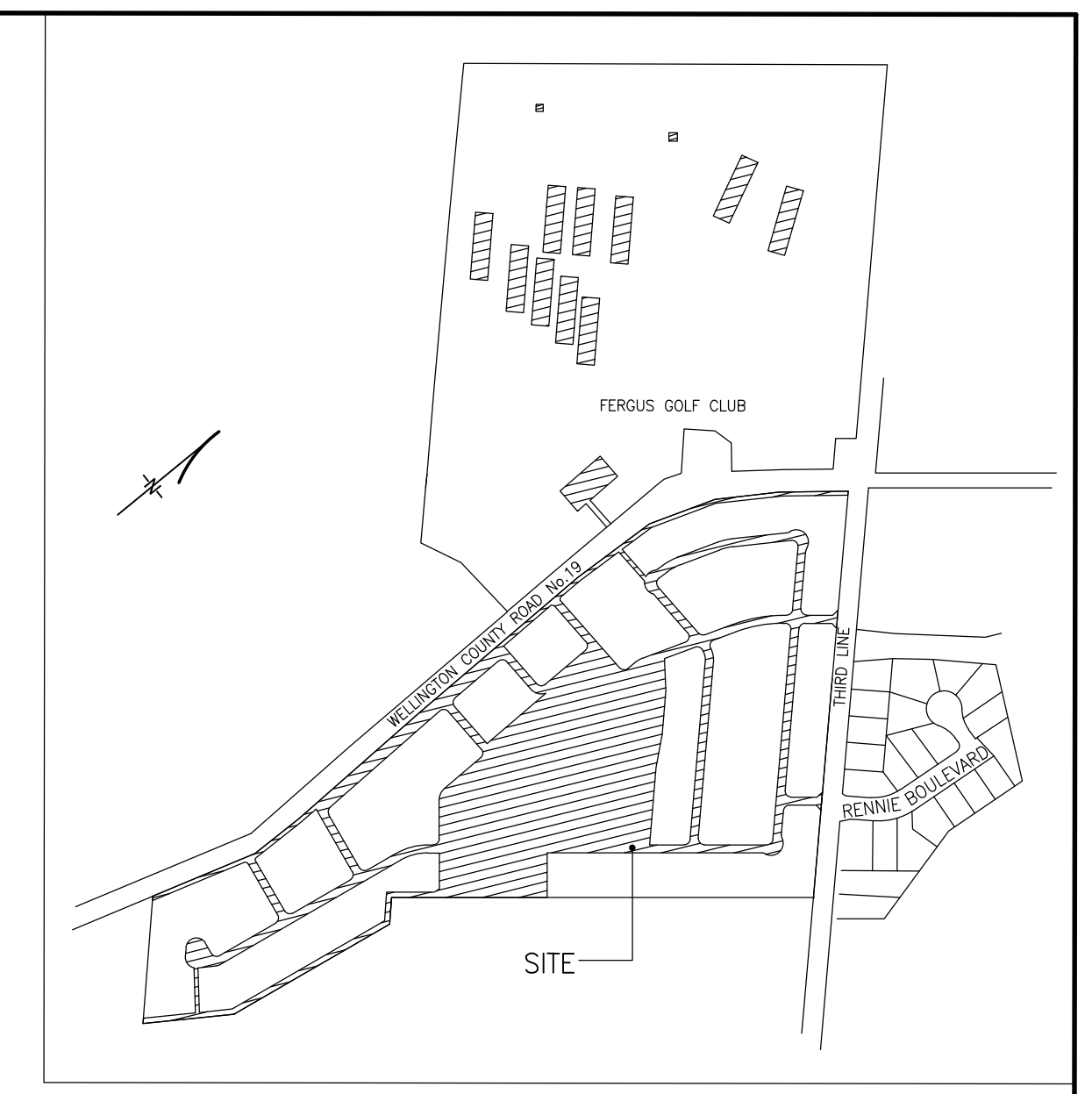
LAND USE
PROPOSED SITE AREA (COMMON ELEMENTS AREA) ABOVE ELEVATION 432.00 METRES = 136801.57 m².
PARCELS OF THE LAND (P.L.N.): 119 RESIDENTIAL PARCELS
LAND USE INFORMATION OBTAINED FROM SITE PLAN BY GPS GROUP DATED DECEMBER 10, 2021



PLAN CONFIGURATION OF COMMON ELEMENTS ABOVE ELEVATION = 432.00 METRES

rpe R-PE SURVEYING LTD.
ONTARIO LAND SURVEYORS
643 Christie Road, Suite 7
Woodbridge, Ontario L4L 8A3
Tel: (905) 835-5000 Fax: (416) 835-5001
Tel: (905) 264-0881 Fax: (905) 264-2099
Website: www.r-pe.ca
DRAWN: A.Q. CHECKED:
JOB No. 21-016 CAD FILE No. 21016-DR-1-51

DRAFT PLAN OF
COMMON ELEMENTS CONDOMINIUM OF
PART OF BLOCKS 1 AND 2,
PLAN 62M-xxx
TOWNSHIP OF CENTRE WELLINGTON
COUNTY OF WELLINGTON



SCALE 1:1500
0m 5m 10m 20m 30m 40m 50m 60m 70m 80m 90m 100 metres

METRIC
DISTANCES AND COORDINATES SHOWN ON THIS PLAN ARE IN METRES AND
CAN BE CONVERTED TO FEET BY DIVIDING BY 0.3048.

NOTES
--- DENOTES EXTENT OF LANDS OWNED BY APPLICANT
P.L.N. DENOTES PROPERTY IDENTIFIER NUMBER

SURVEYOR'S CERTIFICATE
I CERTIFY THAT THE BOUNDARIES OF THE LANDS TO BE SUBDIVIDED
AND THEIR RELATIONSHIP TO THE ADJOINING LANDS ARE ACCURATELY AND
CORRECTLY SHOWN.

DATE FEBRUARY 12TH 2022

C. P. EDWARD
ONTARIO LAND SURVEYOR

OWNER'S CERTIFICATE
I AUTHORIZE R-PE SURVEYING LTD., O.L.S. TO PREPARE AND SUBMIT
THIS DRAFT PLAN OF COMMON ELEMENTS CONDOMINIUM TO THE
TOWNSHIP OF CENTRE WELLINGTON FOR APPROVAL.

DATE FEBRUARY 17TH 2022
883990 ONTARIO LIMITED

SHAWN EVANS
AUTHORIZED SIGNING OFFICER
I HAVE THE AUTHORITY TO BIND THE CORPORATION

LAND USE
PROPOSED SITE AREA (COMMON ELEMENTS AREA) BELOW ELEVATION 432.00 METRES = 162801.57 m².
PARCELS OF FTD LAND (POTL): 119 RESIDENTIAL PARCELS
LAND USE INFORMATION OBTAINED FROM SITE PLAN BY GPS GROUP
DATED DECEMBER 10, 2021

LOT 1, 2, CONCESSION 3
PART 1, PLAN 60R - 2599 P.L.N. 71131 - 0025 (AGRICULTURAL)
PART 1, PLAN 60R - 1700 P.L.N. 71131 - 0027 (AGRICULTURAL)

KEY PLAN (NOT TO SCALE)



PLAN CONFIGURATION OF COMMON ELEMENTS BELOW ELEVATION = 432.00 METRES