

# **Guelph-Eramosa Residential Supply Maps**

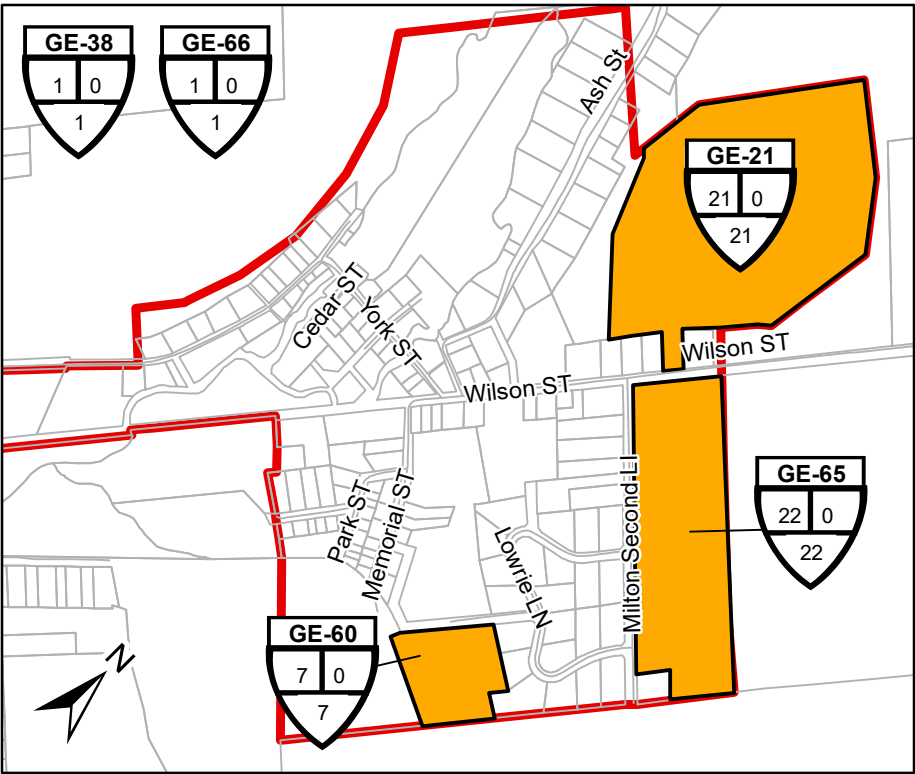
As of July 1, 2019

GUELPH-ERAMOSA LAND BUDGET  
LONG TERM RESIDENTIAL UNIT SUPPLY By Category (as of July 2019)

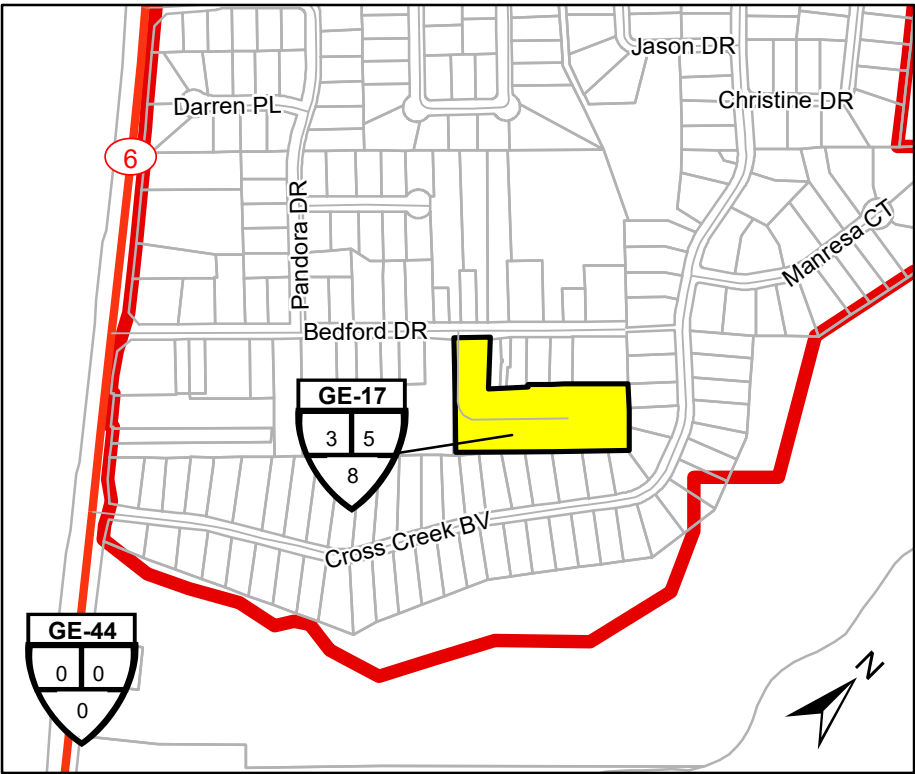
Vacant & Potential Supply					
Area	Draft				TOTAL UNITS
	Registered	Approved or Provisional	Applications Under Review	Vacant Designated	
URBAN CENTRES	87	12	111	13	223
Rockwood	87	12	111	13	223
OUTSIDE URBAN CENTRES	70	5	0	104	179
Ariss	18	0	0	31	49
Countryside	41	0	0	0	41
Eden Mills	1	0	0	51	52
Everton	2	5	0	3	10
Hamilton Drive	3	0	0	0	3
Hartfield	4	0	0	4	8
Marden	0	0	0	4	4
Oustic	0	0	0	2	2
Promenade Park	1	0	0	0	1
Shadow Beach	0	0	0	9	9
MUNICIPAL TOTAL	157	17	111	117	402

- NOTES:
1. The figures contained in the table and maps are subject to change during the Municipal Comprehensive Review (MCR).
  2. The figures contained in the table do not include lands designated future development.

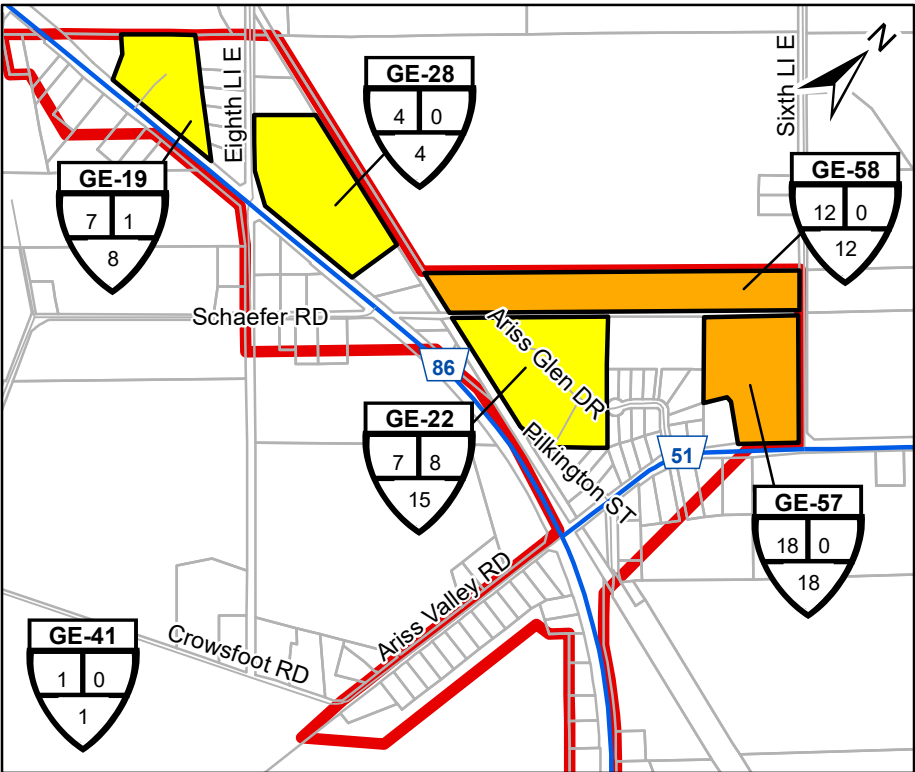




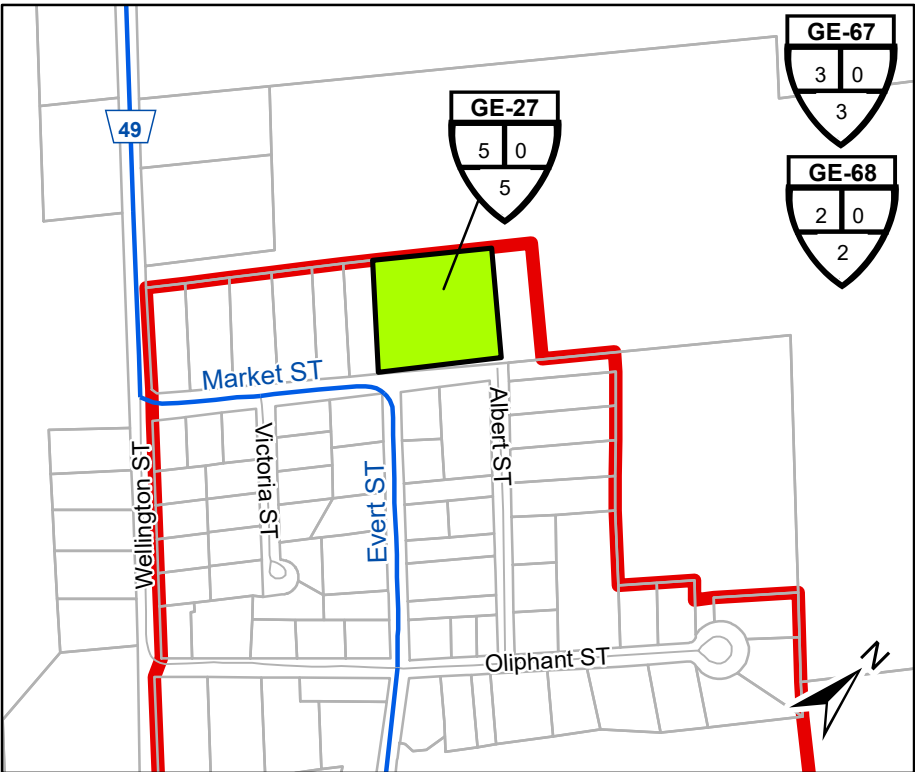
Eden Mills Fontanatos (GE-21), Vacant Land Eden Mills (GE-65), Unnamed Eden Mills (GE-60), Eden Mills Potential Consents (GE-66) and Eden Mills Vacant Lots (GE-38)



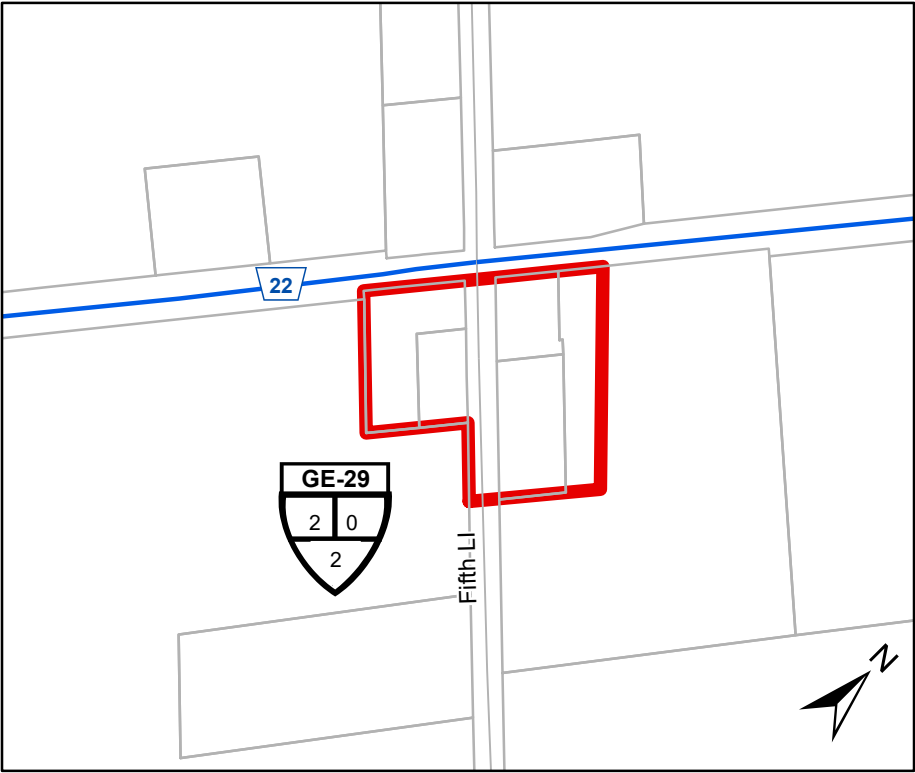
Martone (GE-17) and Hamilton Drive Vacant Lots (GE-44)



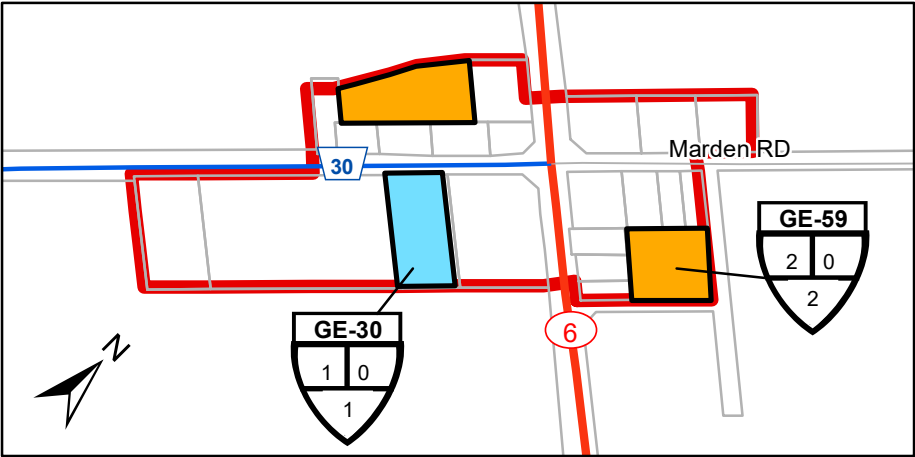
Elsig Estates (GE-19), Usher's Creek (GE-22), Ariss NE 86 and 8th Line (GE-28), Ariss Sixth Line (GE-57), Ariss Brohman Lands (GE-58) and Ariss Infilling (GE-41)



Eilers (GE-27), Potential Infill (GE-67) and Vacant Lots (GE-68)



Oustic Infilling (GE-29)



Marden (GE-30), Marden Vacant Lots (GE-59)



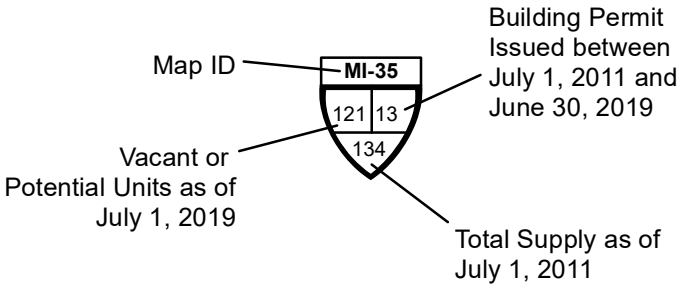
Potential Infill Consents



Vacant Lots In Existing Neighbourhoods

# Township of Guelph-Eramosa Rural Residential Supply Inventory

THIS IS NOT SURVEY DATA  
Parcels - Teranet 2002, County of Wellington 2015  
Roads - County of Wellington, 2015  
Includes material © 2015 of the Queen's Printer for Ontario. All Rights Reserved.



## Legend

- Vacant Designated
- Application Under Review
- Draft Approved Or Provisional
- Registered
- Built Out Since 2011
- Built Boundary



# **Guelph-Eramosa Employment Supply Maps**

As of July 1, 2019

Employment Lands Summary  
July 2019

All values are in acres

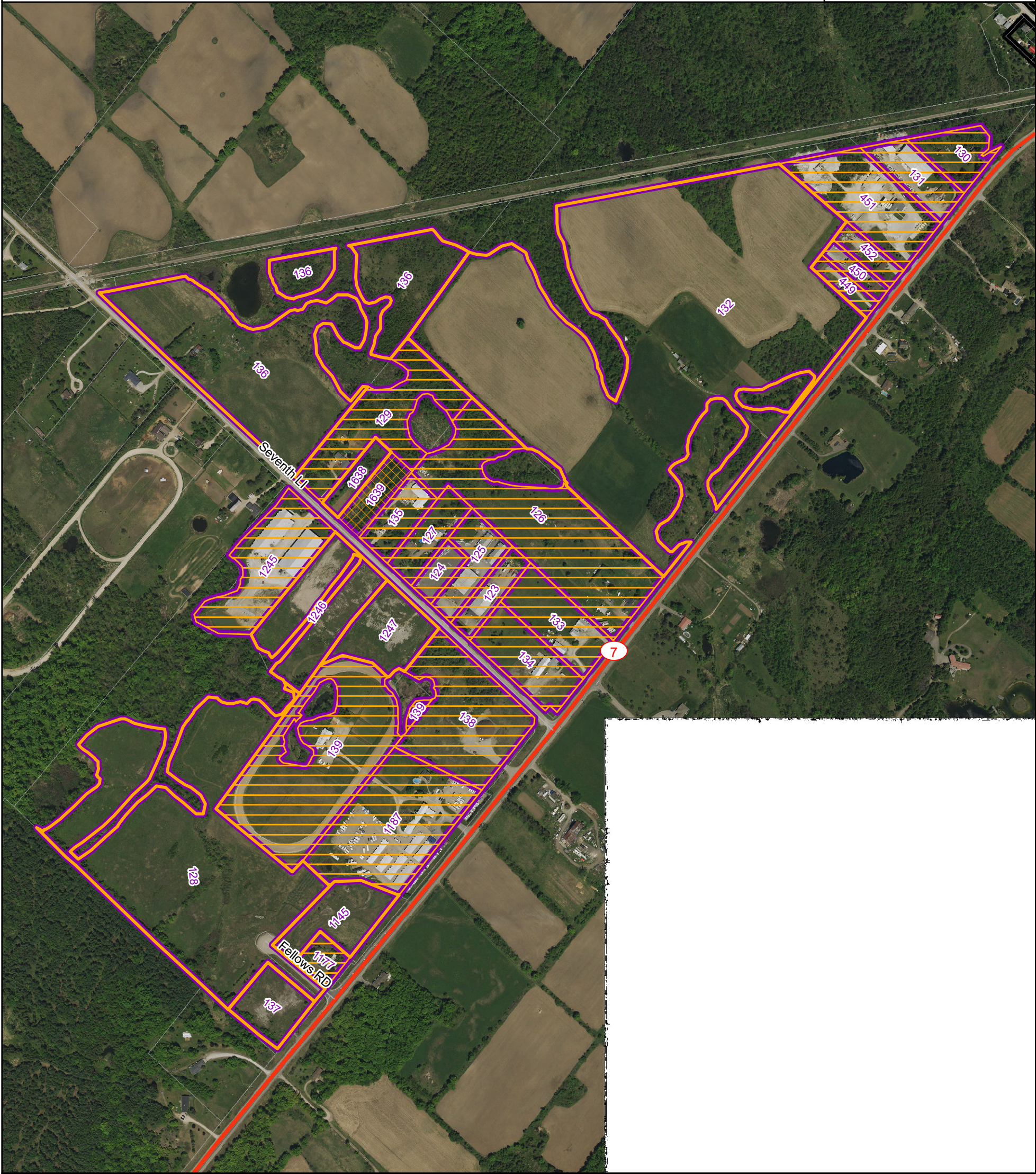
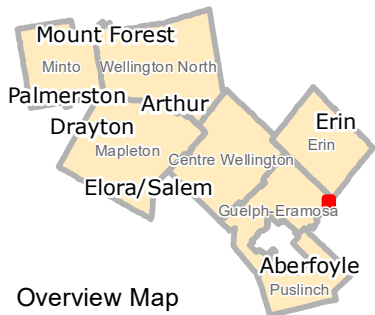
Guelph/Eramosa

	Highway Commercial					Industrial					Rural Industrial				
	Absorbed since 2011	Occupied	Vacant Designated	TOTAL DESIGNATED AREA	Vacant Developable Area	Absorbed since 2011	Occupied	Vacant Designated	TOTAL DESIGNATED AREA	Vacant Developable Area	Absorbed since 2011	Occupied	Vacant Designated	TOTAL DESIGNATED AREA	Vacant Developable Area
Guelph/Eramosa		5.55	9.48	15.80	9.48						37.01	275.21	443.64	755.86	348.13
Rockwood	0.77	0.00	0.52	1.29	0.52										
Highway Commercial Lands in Rockwood	0.77		0.52	1.29	0.52										
Outside Urban Centre	0.00	5.55	8.96	14.51	8.96						37.01	275.21	443.64	755.86	348.13
Crewson's Corner Industrial Area											1.59	85.55	129.47	216.61	92.18
Highway 7 Employment Area			1.54	1.54	1.54							9.36	101.40	110.76	81.72
Highway Commercial Lands in Ariss		4.84	3.23	8.07	3.23										
Highway Commercial Lands in Marden			4.19	4.19	4.19										
Highway Commercial Lands Outside Urban Areas		0.71		0.71											
Mann Construction Lands												30.54		30.54	
North of Hartfield												21.06		21.06	
Wellington Road 124 Industrial Area											35.42	128.70	212.77	376.89	174.23

- NOTES:
- 1. The figures contained in the table and maps are subject to change during the Municipal Comprehensive Review (MCR)
  - 2. The figures contained in the table do not include lands designated future development.



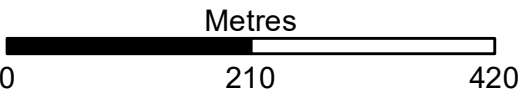
# Crewsons Corner Industrial Area



## Legend

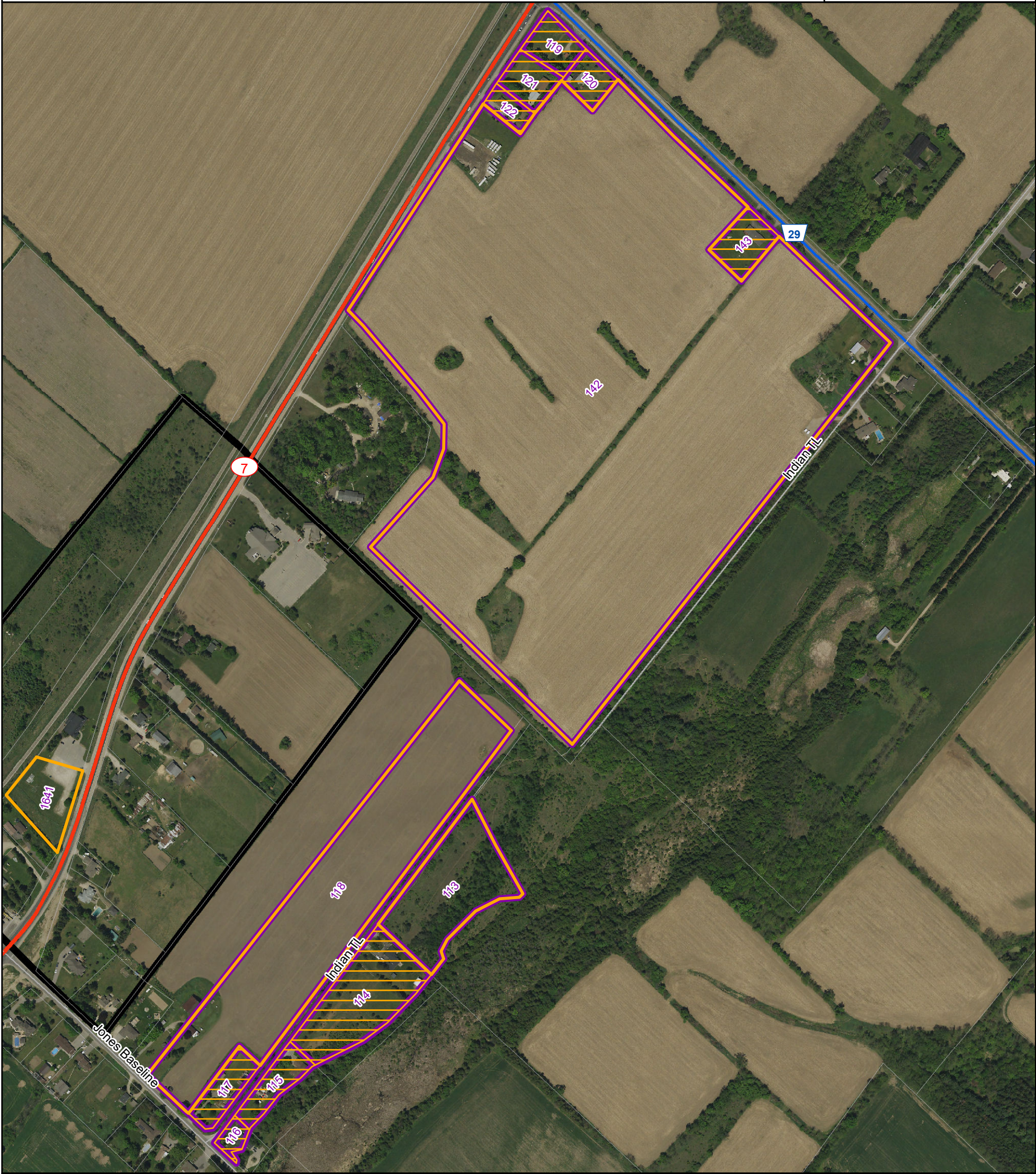
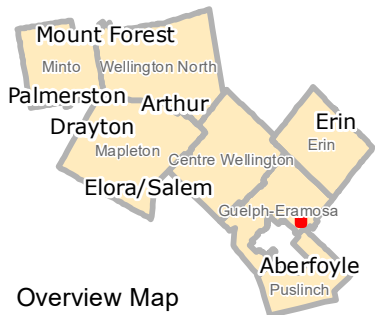
- 123** Identification Number
- Industrial Land
- Highway Commercial Land
- Vacant
- Absorbed since January 2011
- Built Prior to January 2011

## Guelph-Eramosa Rural Area





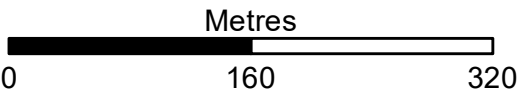
# Highway 7 Industrial Area



## Legend

- 123 Identification Number
- Industrial Land
- Highway Commercial Land
- Vacant
- Absorbed since January 2011
- Built Prior to January 2011

## Guelph-Eramosa Rural Area





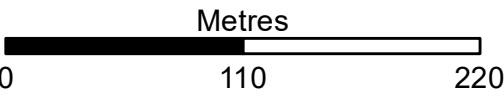
# Highway Commercial Lands in Ariss



## Legend

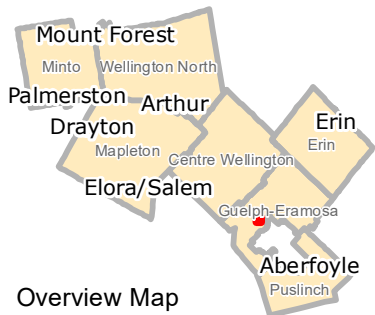
- 123 Identification Number
- Industrial Land
- Highway Commercial Land
- Vacant
- Absorbed since January 2011
- Built Prior to January 2011

## Guelph-Eramosa Ariss





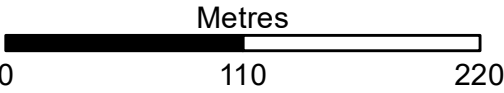
# Highway Commercial Lands in Marden



## Legend

- 123 Identification Number
- Industrial Land
- Highway Commercial Land
- Vacant
- Absorbed since January 2011
- Built Prior to January 2011

## Guelph-Eramosa Marden





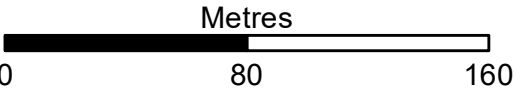
# Highway Commercial Lands in Rockwood (1)



## Legend

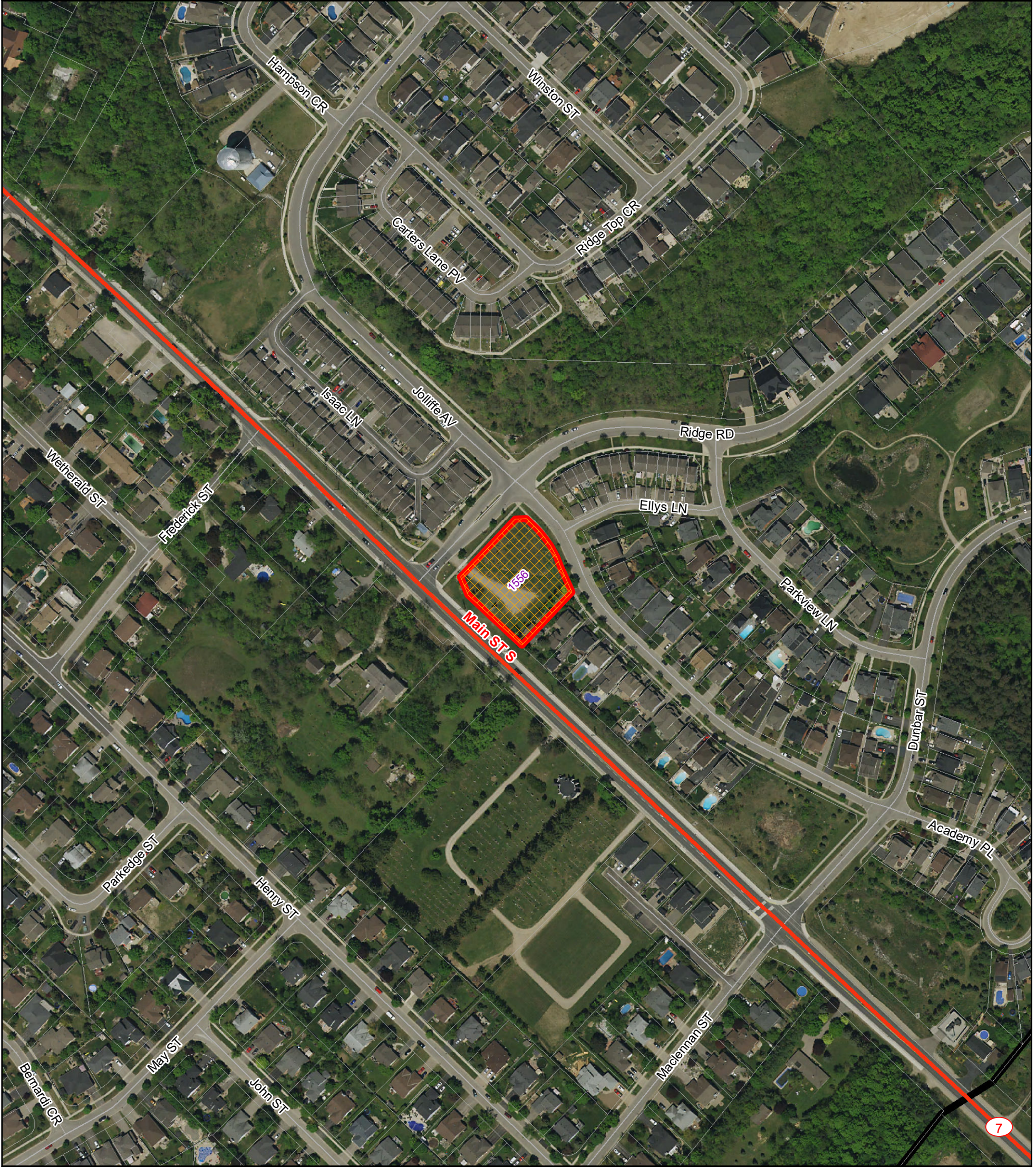
- 123 Identification Number
- Industrial Land
- Highway Commercial Land
- Vacant
- Absorbed since January 2011
- Built Prior to January 2011

## Guelph-Eramosa Rockwood





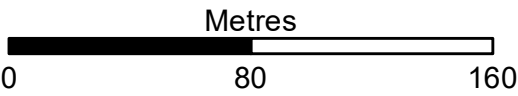
# Highway Commercial Lands in Rockwood (2)



## Legend

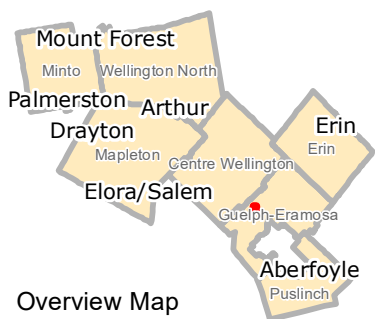
- 123 Identification Number
- Industrial Land
- Highway Commercial Land
- Vacant
- Absorbed since January 2011
- Built Prior to January 2011

## Guelph-Eramosa Rockwood





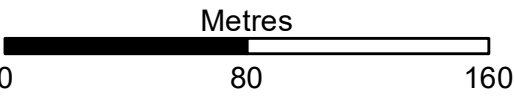
# Highway Commercial Lands Outside Urban Areas



## Legend

- 123 Identification Number
- Industrial Land
- Highway Commercial Land
- Vacant
- Absorbed since January 2011
- Built Prior to January 2011

## Guelph-Eramosa Rural Area





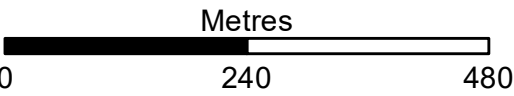
# Mann Construction Lands



## Legend

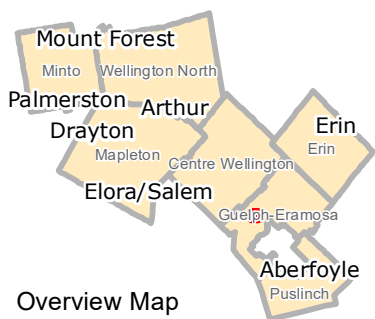
- 123 Identification Number
- Industrial Land
- Highway Commercial Land
- Vacant
- Absorbed since January 2011
- Built Prior to January 2011

## Guelph-Eramosa Rural Area





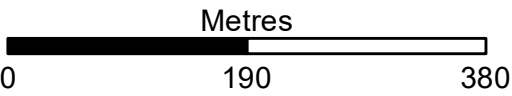
# North of Hartfield



## Legend

- 123 Identification Number
- Industrial Land
- Highway Commercial Land
- Vacant
- Absorbed since January 2011
- Built Prior to January 2011

## Guelph-Eramosa Rural Area





Overview Map

