

Mapleton Residential Supply Maps

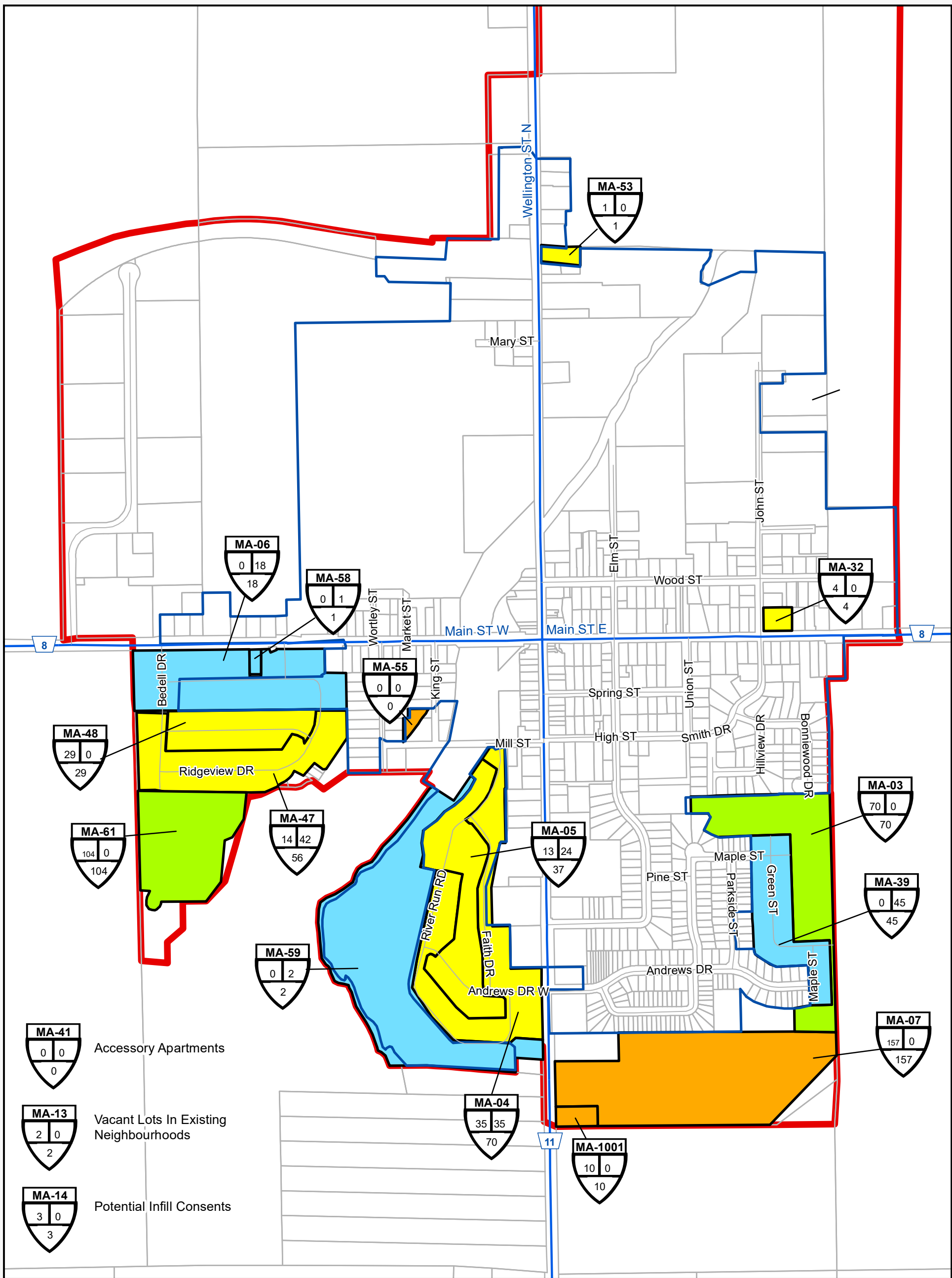
As of July 1, 2019

MAPLETON LAND BUDGET
LONG TERM RESIDENTIAL UNIT SUPPLY By Category (as of July 2019)

Area	Vacant & Potential Supply				TOTAL UNITS
	Registered	Draft Approved or Provisional	Applications Under Review	Vacant Designated	
URBAN CENTRES	108	174	0	696	978
Drayton	98	174	0	170	442
Moorefield	10	0	0	526	536
OUTSIDE URBAN CENTRES	101	34	0	0	135
Alma	3	0	0	0	3
Glen Allan	4	0	0	0	4
Lot 16, Con 12 Maryboro	0	0	0	0	0
Rothsay	9	0	0	0	9
Countryside	69	0	0	0	69
Rural Estate	16	34	0	0	50
MUNICIPAL TOTAL	209	208	0	696	1113

NOTES:

- 1. The figures contained in the table and maps are subject to change during the Municipal Comprehensive Review (MCR).
- 2. The figures contained in the table do not include lands designated future development.



Residential Supply Category

- Vacant Designated
- Application Under Review
- Draft Approved Or Provisional
- Registered
- Built Out Since 2011
- Built Boundary

Map ID

MI-35	
121	13
134	

Vacant or Potential Units as of July 1, 2016

Building Permit Issued between July 1, 2011 and June 30, 2016

Total Supply as of July 1, 2011

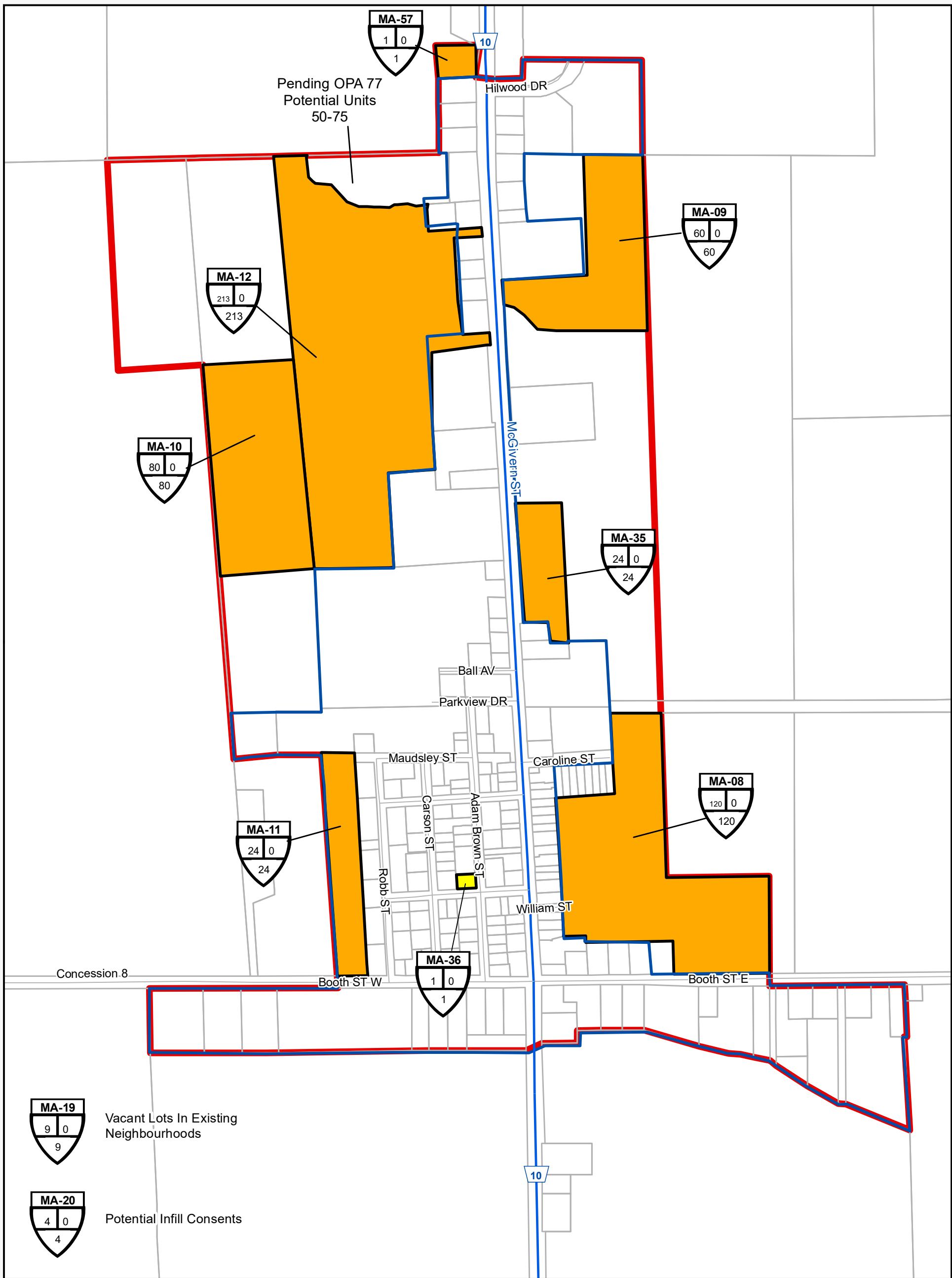
Drayton Residential Supply Inventory with Built Boundary

0125250500

Metres

F:\LIS\Projects\2019\MapletonSupplyAnalysis\Drayton_ResidentialSupply.mxd

Last Edit: Monday, December 9, 2019



Residential Supply Category

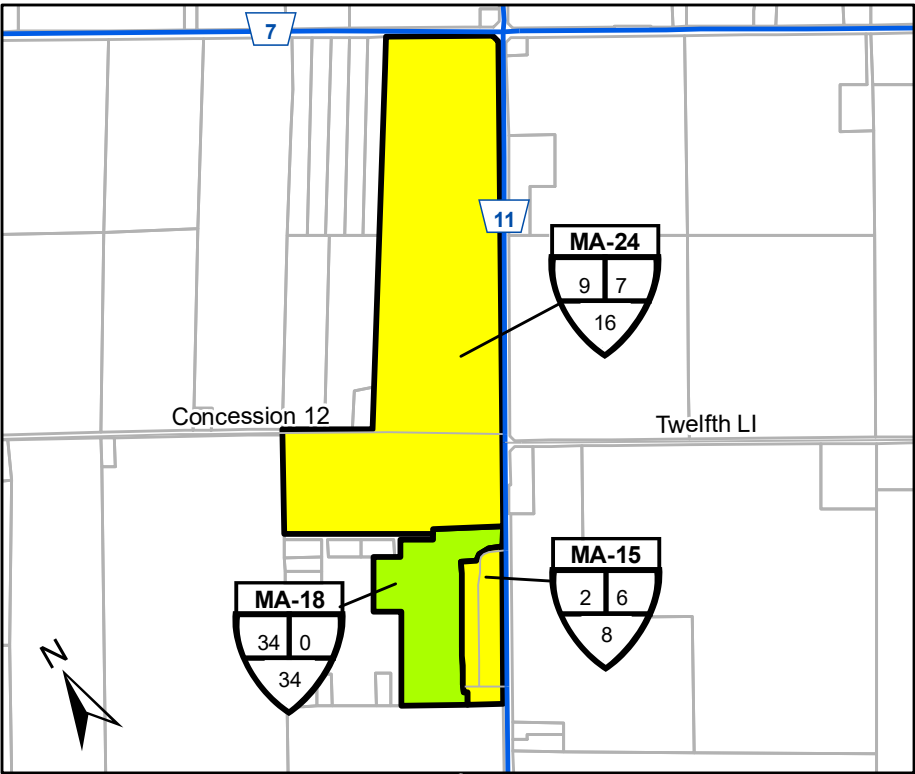
- Vacant Designated
- Application Under Review
- Draft Approved Or Provisional
- Registered
- Built Out Since 2011
- Built Boundary

Map ID
MI-35
Building Permit Issued between July 1, 2011 and June 30, 2016
Vacant or Potential Units as of July 1, 2016
Total Supply as of July 1, 2011

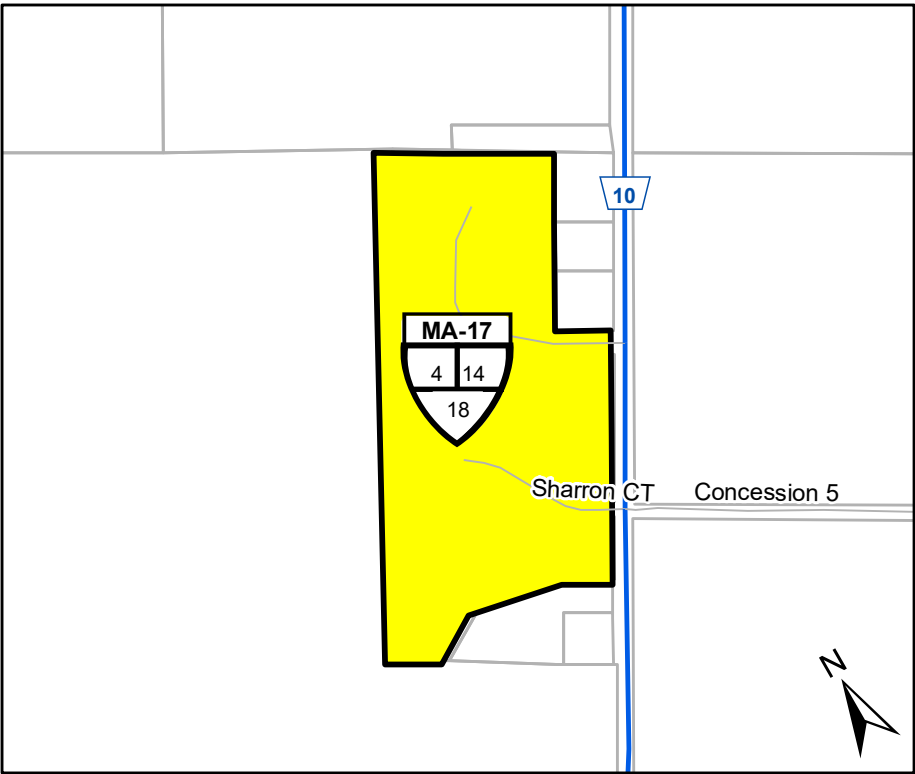
**Moorefield
Residential Supply Inventory
with Built Boundary**

0 90 180 360
Metres

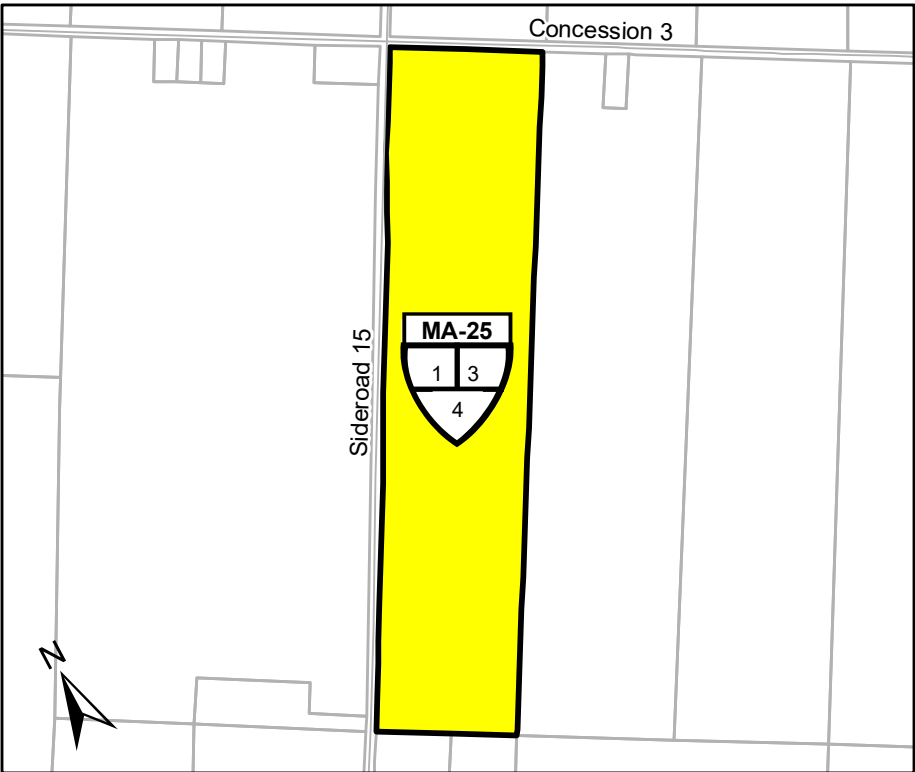
Last Edit: Tuesday, November 5, 2019



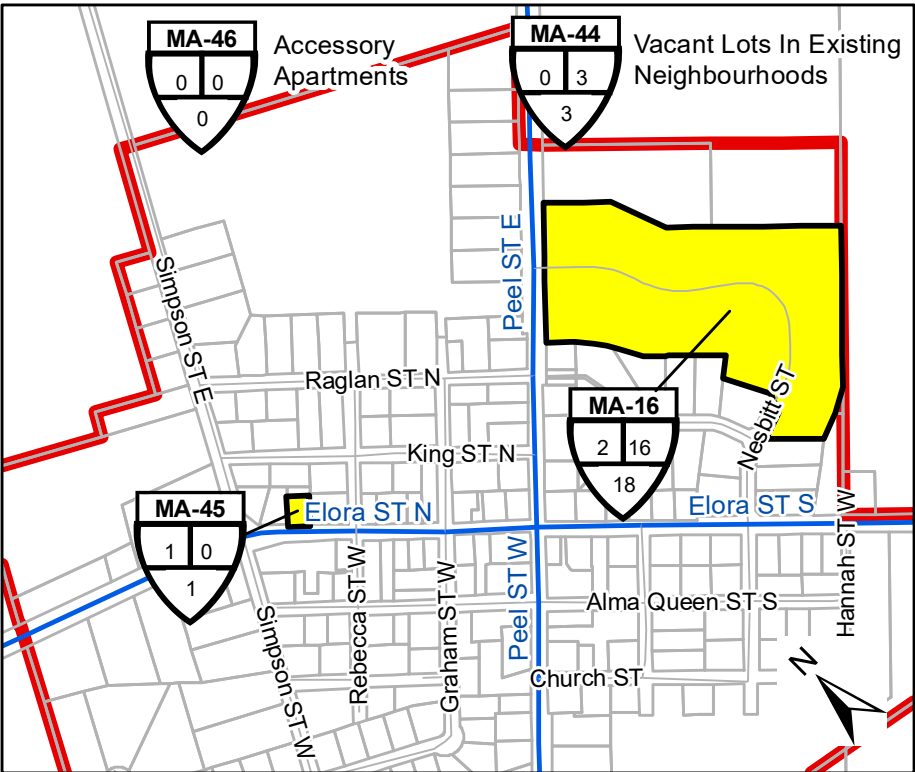
Riverview Heights - Phase 1 (MA-15) & Phase 2 (MA-18), Lot 18 Con 11-12 Maryborough (MA-24)



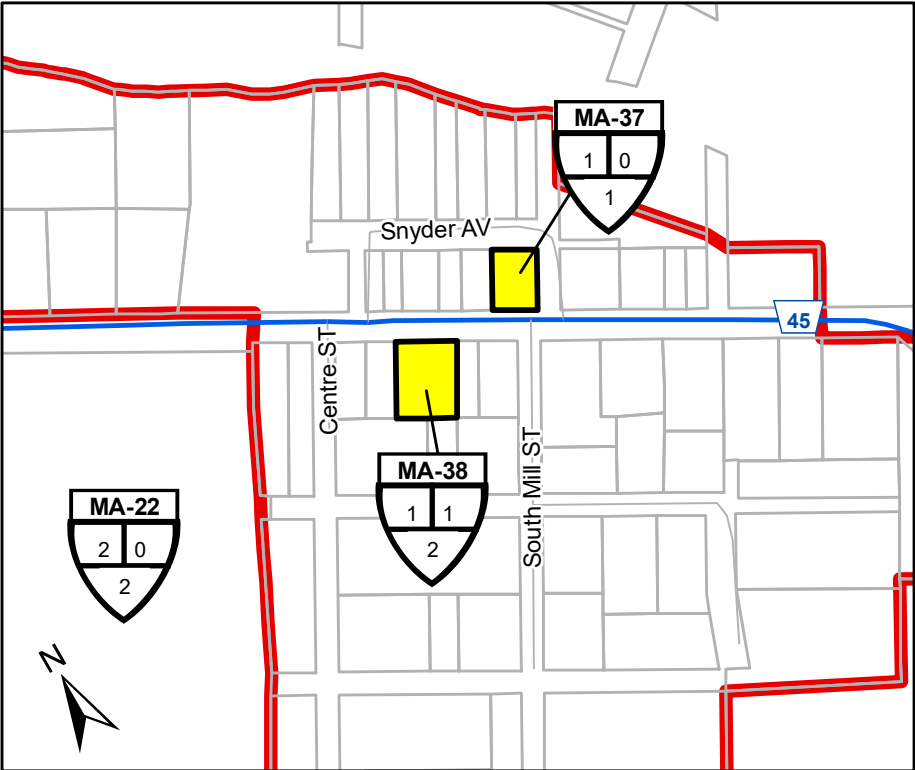
Wyndot Estates



Lot 16 Con 2 Maryborough



Alma Community Hall (MA-45) and Alma Crossing (MA-16)



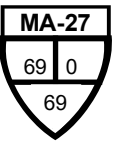
Donkers North (MA-37), Donkers North (MA-38) and Glen Allan Vacant Lots (MA-22)



Potential Rural Consents



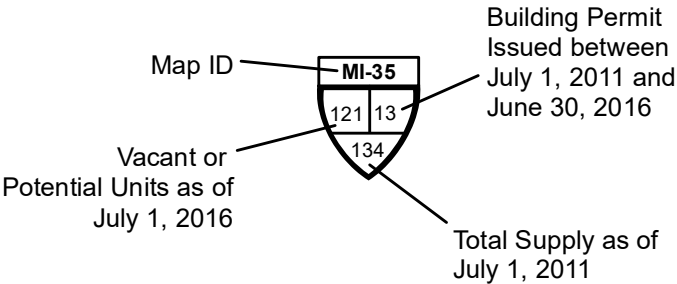
Rural Accessory Apartments



Vacant Rural Lots

Township of Mapleton Rural Residential Supply Inventory

THIS IS NOT SURVEY DATA
Parcels - Teranet 2002, County of Wellington 2015
Roads - County of Wellington, 2015
Includes material © 2015 of the Queen's Printer for Ontario. All Rights Reserved.



Residential Supply Category

- Vacant Designated
- Application Under Review
- Draft Approved Or Provisional
- Registered
- Built Out Since 2011
- Built Boundary

Mapleton Employment Supply Maps

As of July 1, 2019

Employment Lands Summary
July 2019

Mapleton

All values are in acres

	Highway Commercial					Industrial					Rural Employment				
	Absorbed since 2011	Occupied	Vacant Designated	TOTAL DESIGNATED AREA	Vacant Developable Area	Absorbed since 2011	Occupied	Vacant Designated	TOTAL DESIGNATED AREA	Vacant Developable Area	Absorbed since 2011	Occupied	Vacant Designated	TOTAL DESIGNATED AREA	Vacant Developable Area
Mapleton	1.55	12.23	12.36	26.14	12.36	1.28	56.27	133.55	191.10	102.88	9.68	157.99	32.14	199.81	25.70
Drayton	1.55	7.91	0.57	10.03	0.57	1.28	46.88	96.40	144.56	76.74	0.00	0.00	0.00	0.00	0.00
Drayton Industrial Park						1.28	10.75	34.64	46.67	27.34					
Highway Commercial Lands in Drayton	1.55	7.91	0.57	10.03	0.57										
Industrial Lands in Drayton							36.13	61.76	97.89	49.40					
Moorefield	0.00	4.32	10.79	15.11	10.79	0.00	9.39	37.15	46.54	26.14	0.00	0.00	0.00	0.00	0.00
Highway Commercial Lands in Moorefield		4.32	10.79	15.11	10.79										
Industrial Lands in Moorefield							9.39	37.15	46.54	26.14					
Outside Urban Centre	0.00	0.00	1.00	1.00	1.00	0.00	0.00	0.00	0.00	0.00	9.68	157.99	32.14	199.81	25.70
Mapleton Rural Industrial Area												23.15		23.15	
Rothsay - Purina Lands												94.51		94.51	
South Teviotdale Rural Employment Area			1.00	1.00	1.00							5.11	32.14	37.25	25.70
Industrial Lands in Alma											9.68	1.81		11.49	
Wallenstein Industrial Lands												33.41		33.41	

NOTES:
1. The figures contained in the table and maps are subject to change during the Municipal Comprehensive Review (MCR).
2. The figures contained in the table do not include lands designated future development.

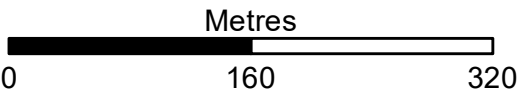
Employment Lands in Drayton (North)



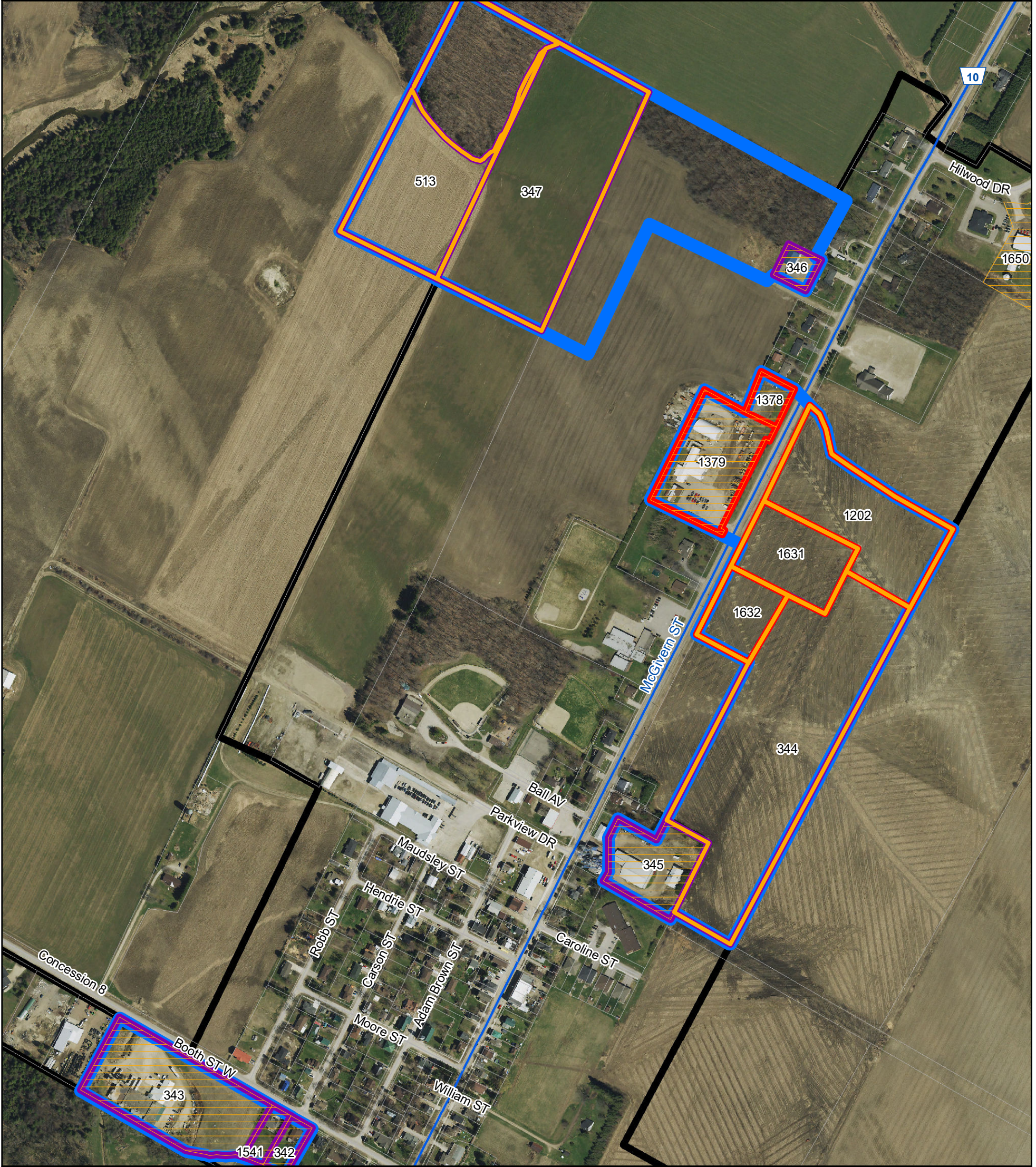
Legend

- 123 Identification Number
- Highway Commercial
- Industrial
- Vacant
- Absorbed since January 2011
- Built Prior to January 2011
- Employment Map Areas

Mapleton
Drayton



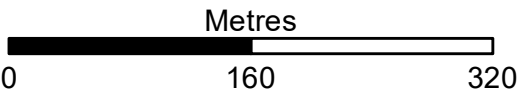
Employment Lands in Moorefield



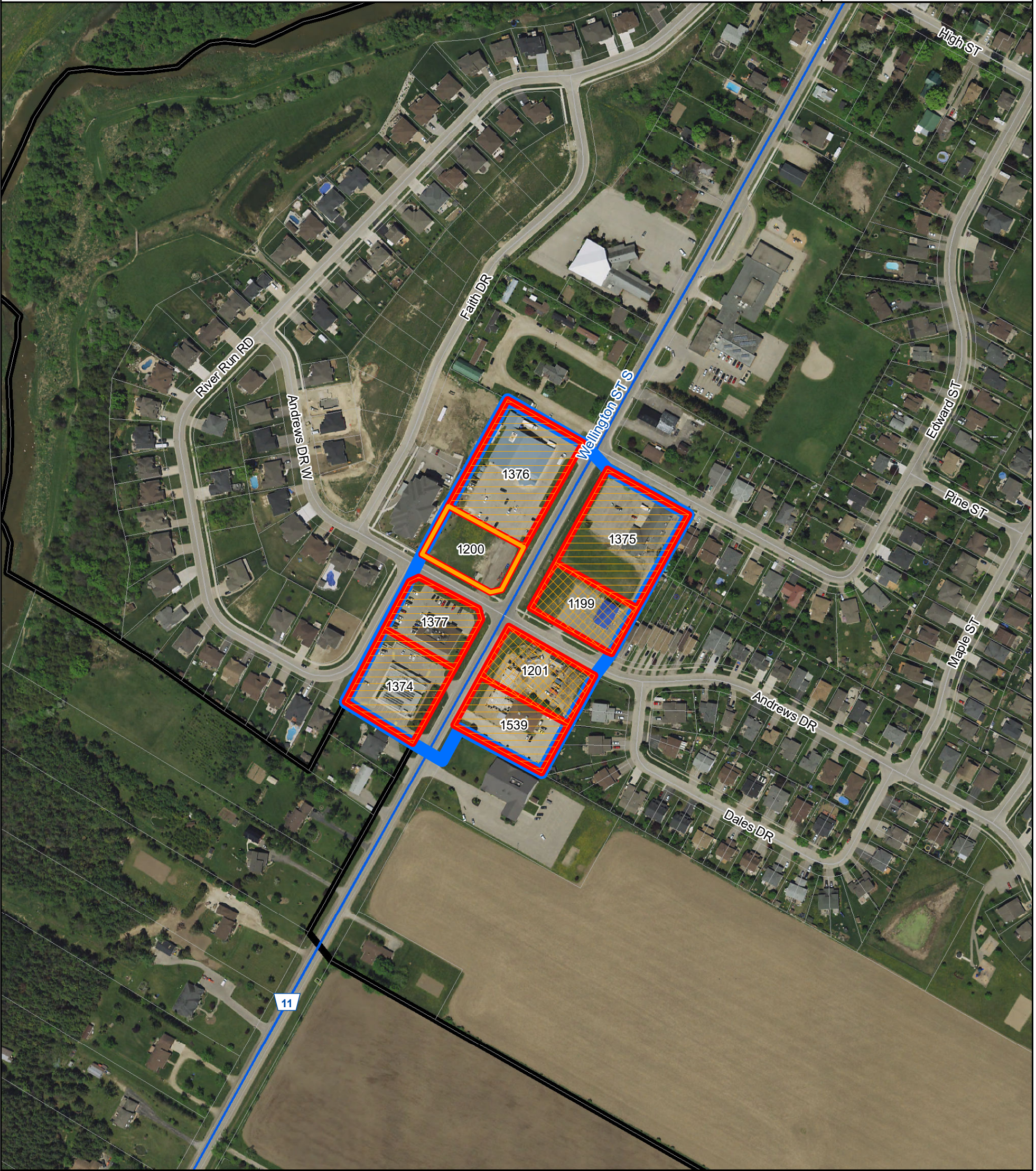
Legend

- 123 Identification Number
- Highway Commercial
- Industrial
- Vacant
- Absorbed since January 2011
- Built Prior to January 2011
- Employment Map Areas

Mapleton
Moorefield



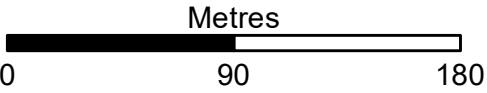
Highway Commercial Lands in Drayton



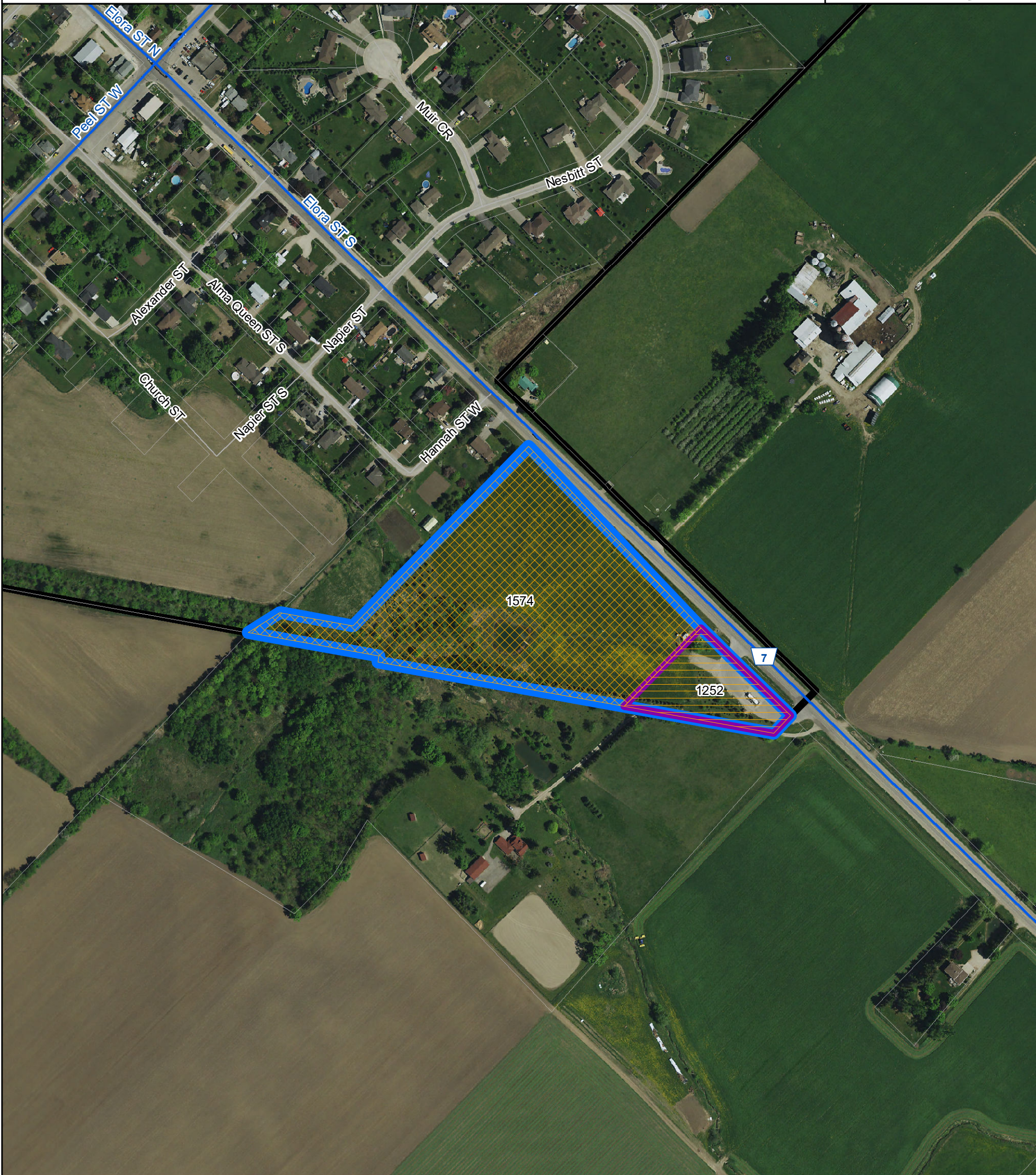
Legend

- 123** Identification Number
- Highway Commercial
- Industrial
- Vacant
- Absorbed since January 2011
- Built Prior to January 2011
- Employment Map Areas

**Mapleton
Drayton**



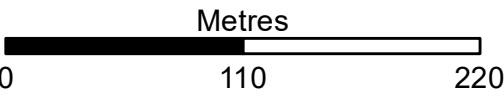
Industrial Lands in Alma



Legend

- 123** Identification Number
- Highway Commercial
- Industrial
- Vacant
- Absorbed since January 2011
- Built Prior to January 2011
- Employment Map Areas

Mapleton
Alma



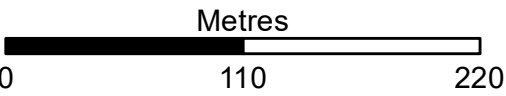
Mapleton Rural Industrial Area



Legend

- 123** Identification Number
- Highway Commercial
- Industrial
- Vacant
- Absorbed since January 2011
- Built Prior to January 2011
- Employment Map Areas

Mapleton Rural Area



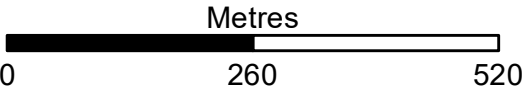
Rothsay - Purina Lands



Legend

- 123 Identification Number
- Highway Commercial
- Industrial
- Vacant
- Absorbed since January 2011
- Built Prior to January 2011
- Employment Map Areas

Mapleton Rural Area



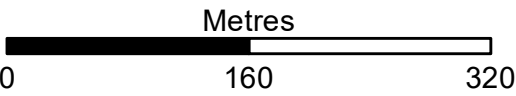
South Teviotdale Employment Area



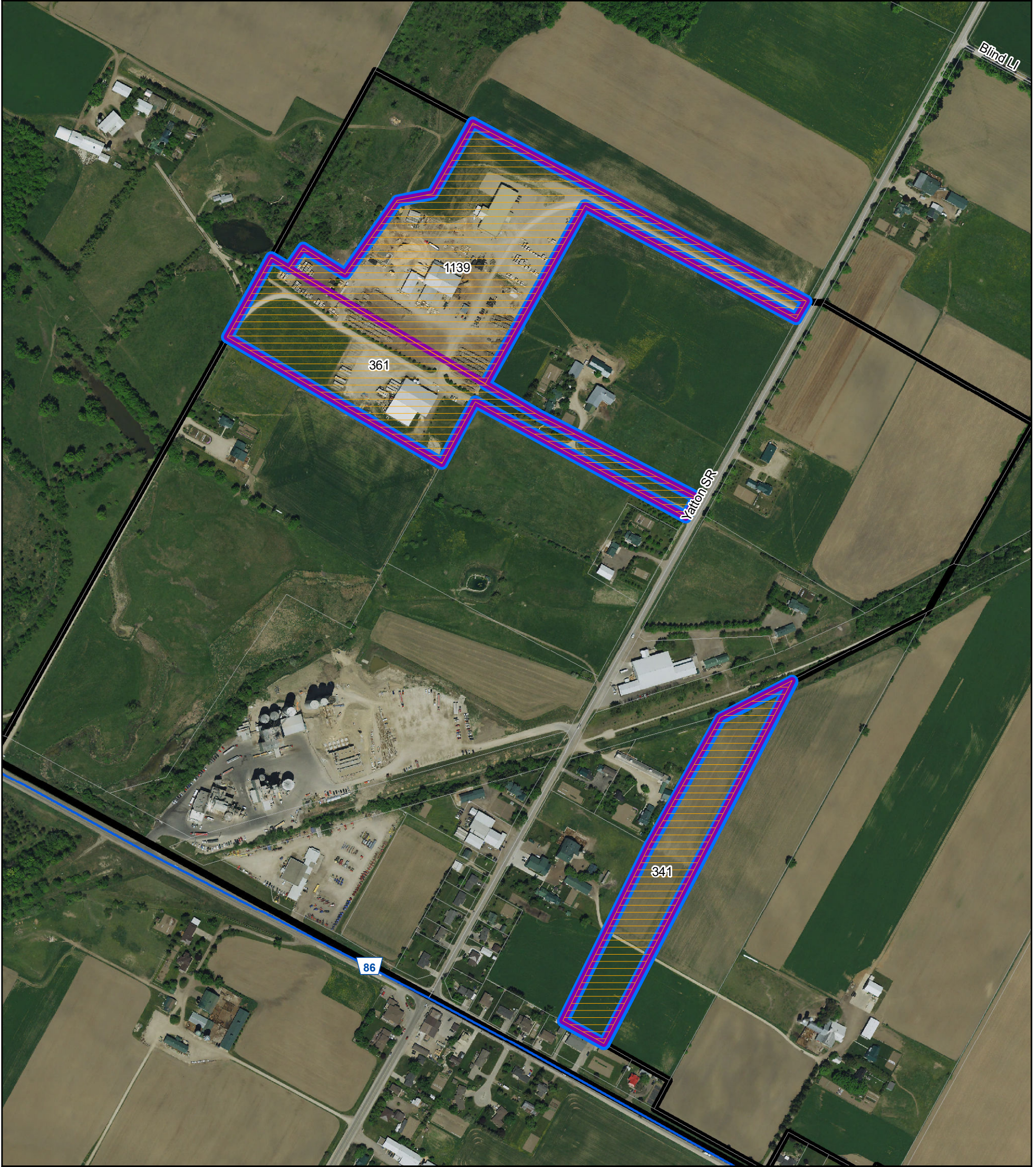
Legend

- 123** Identification Number
- Highway Commercial
- Industrial
- Vacant
- Absorbed since January 2011
- Built Prior to January 2011
- Employment Map Areas

Mapleton Rural



Wallenstein Industrial Lands



Legend

- 123 Identification Number
- Highway Commercial
- Industrial
- Vacant
- Absorbed since January 2011
- Built Prior to January 2011
- Employment Map Areas

Mapleton
Wallenstein

