

Minto

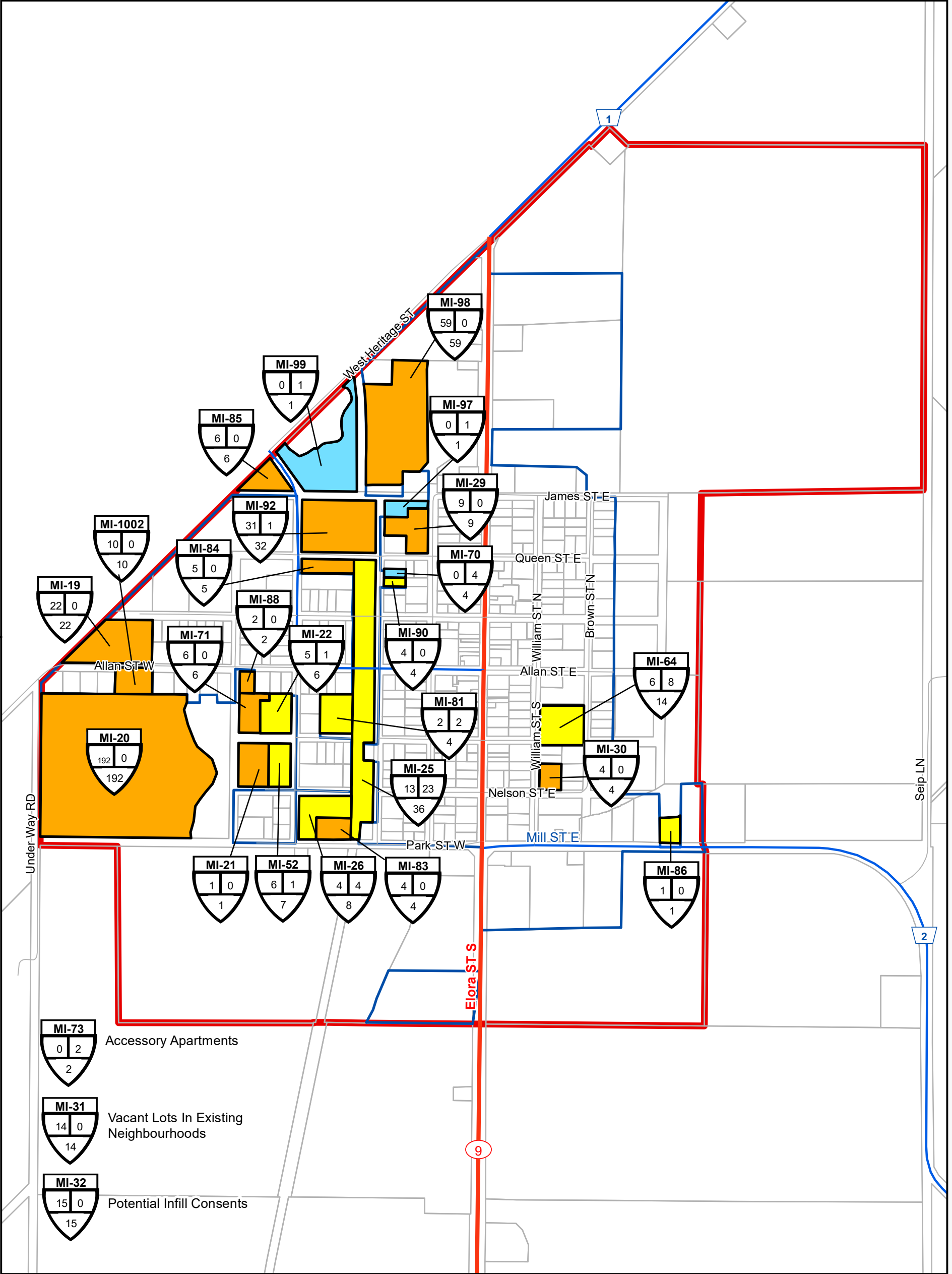
Residential Supply Maps

As of July 1, 2019

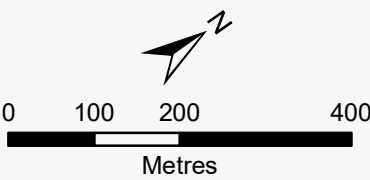
MINTO LAND BUDGET
LONG TERM RESIDENTIAL UNIT SUPPLY By Category (as of July 2019)

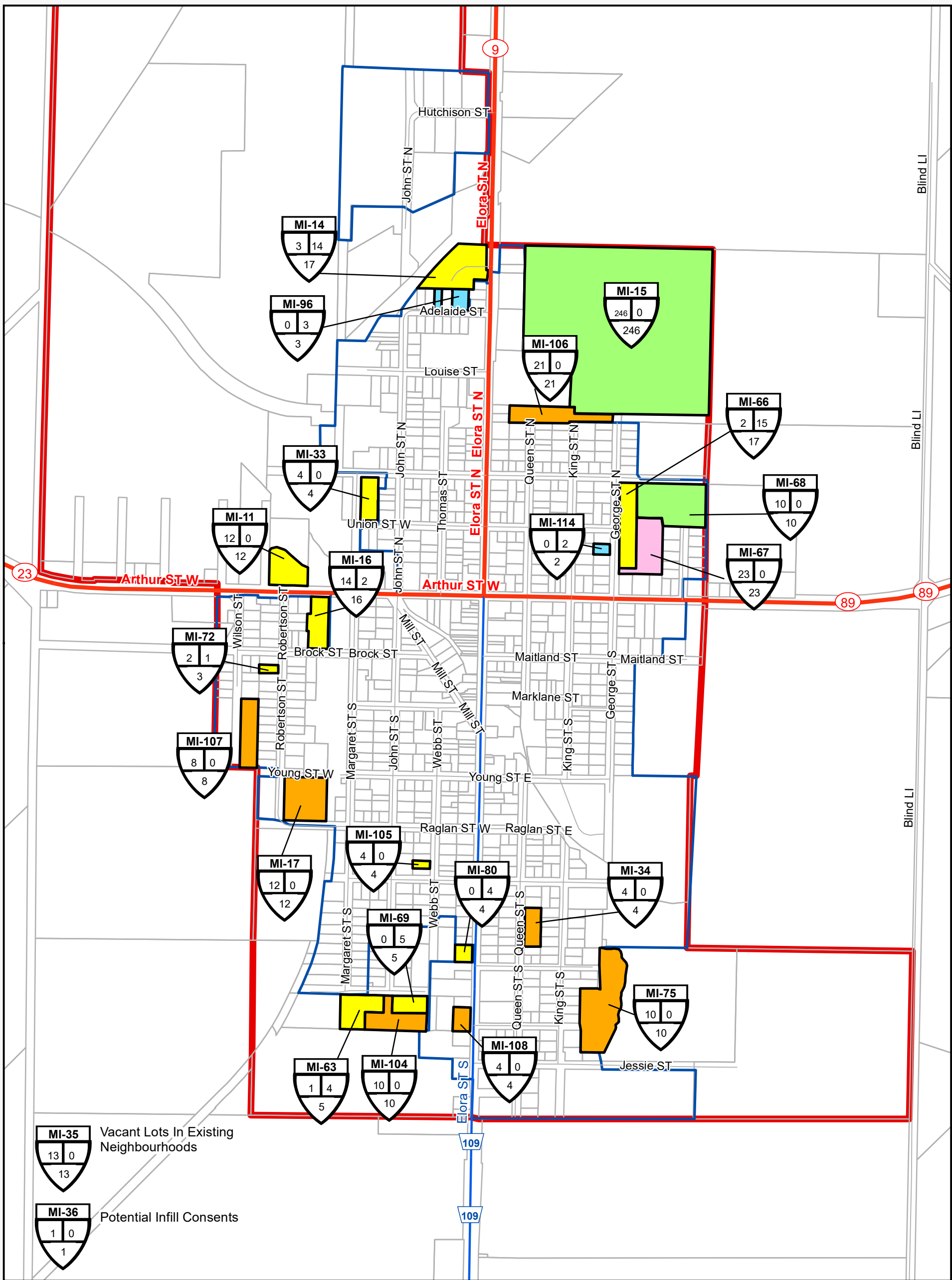
Vacant & Potential Supply					
Area	Registered	Draft Approved or Provisional	Applications Under Review	Vacant Designated	TOTAL UNITS
URBAN CENTRES	139	399	23	625	1186
Clifford	55	0	0	366	421
Harriston	56	256	23	70	405
Palmerston	28	143	0	189	360
OUTSIDE URBAN CENTRES	59	0	0	71	130
Countryside	51	0	0	22	73
Drew	1	0	0	5	6
Rural Estate	7	0	0	15	22
Teviotdale	0	0	0	29	29
MUNICIPAL TOTAL	198	399	23	696	1316

- NOTES:
1. The figures contained in the table and maps are subject to change during the Municipal Comprehensive Review (MCR).
 2. The figures contained in the table do not include lands designated future development.



Clifford Residential Supply Inventory with Built Boundary



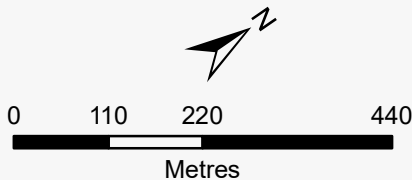


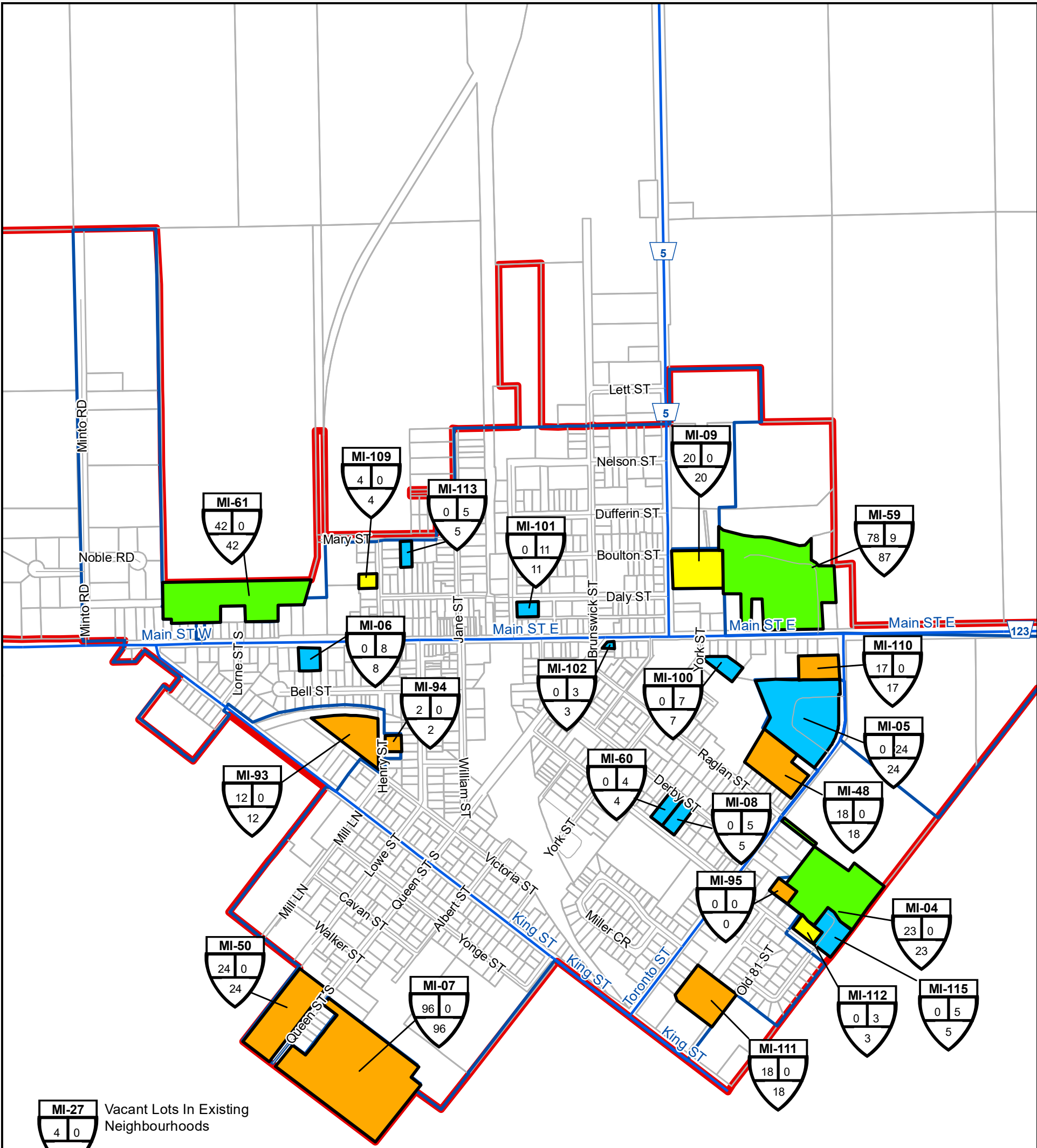
Residential Supply Category

- Vacant Designated
- Application Under Review
- Draft Approved or Provisional
- Registered
- Built Out Since 2011
- Built Boundary

Map ID
MI-35
Building Permit
Issued between
July 1, 2011 and
June 30, 2019
Vacant or
Potential Units as of
July 1, 2019
Total Supply as of
July 1, 2011

Harriston Residential Supply Inventory with Built Boundary





MI-27 Vacant Lots In Existing Neighbourhoods






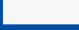


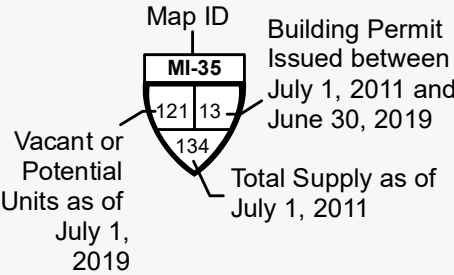
MI-28 Potential Infill Consents



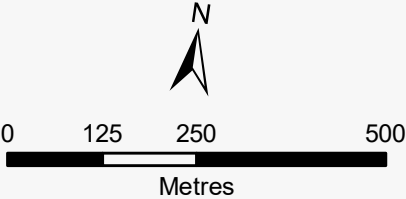
MI-55 Accessory Apartments

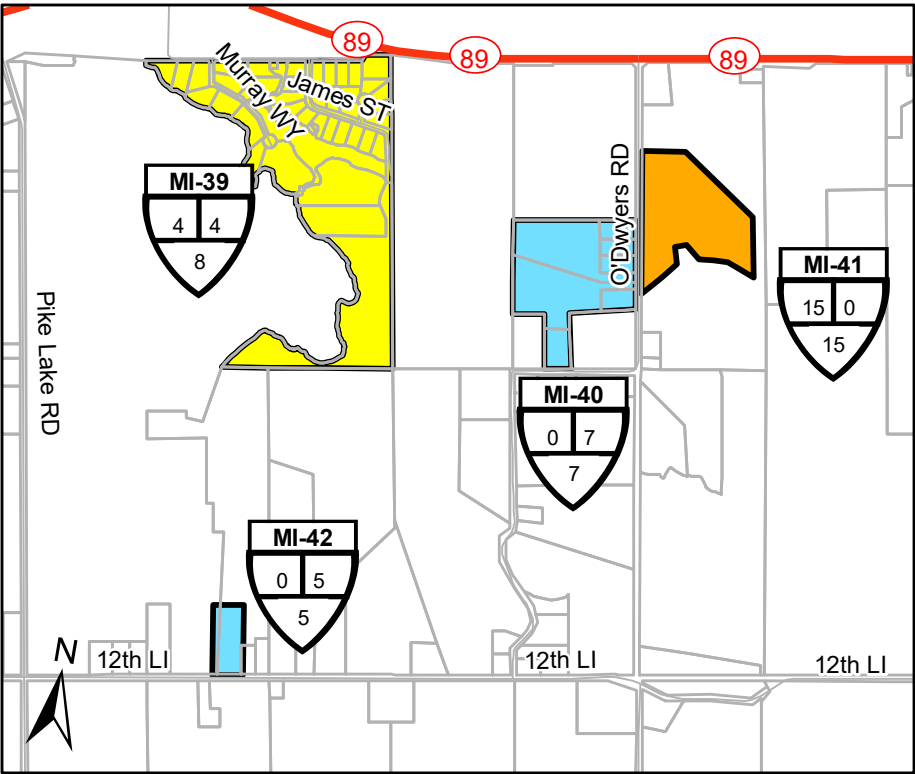
Residential Supply Category

-  Vacant Designated
-  Application Under Review
-  Draft Approved
-  Registered
-  Built Out Since July 2011
-  Built Boundary

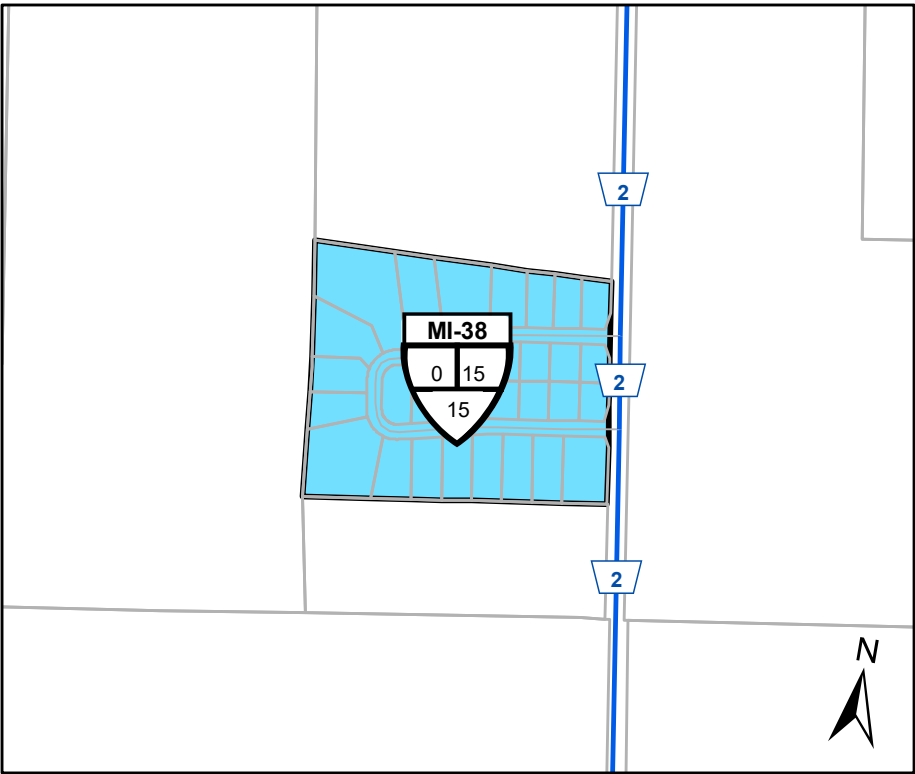


**Palmerston
Residential Supply Inventory
with Built Boundary**

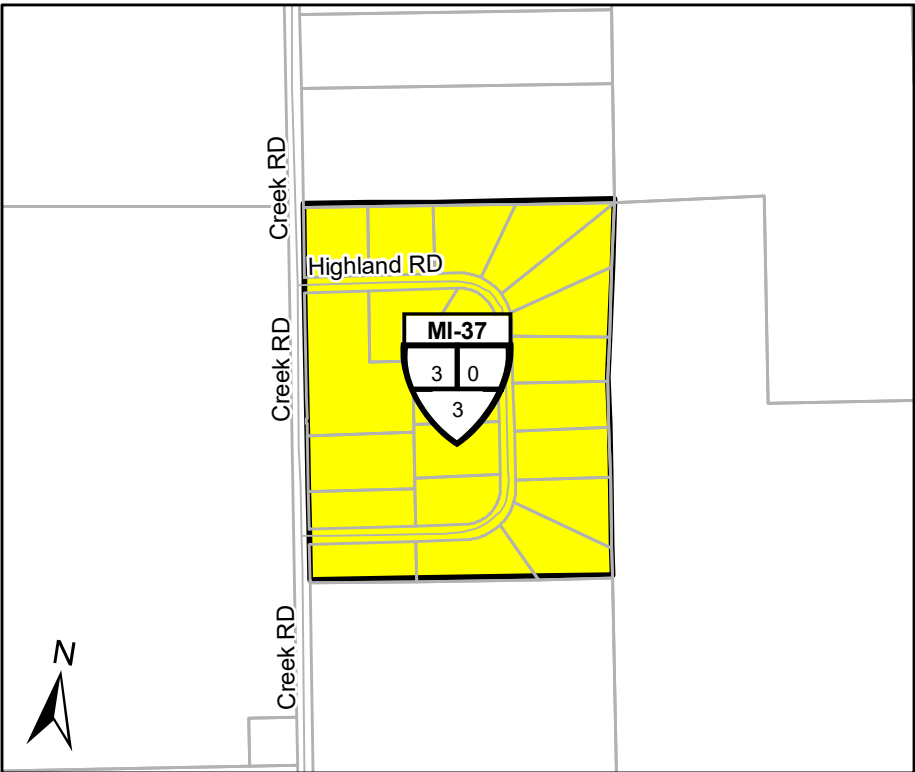




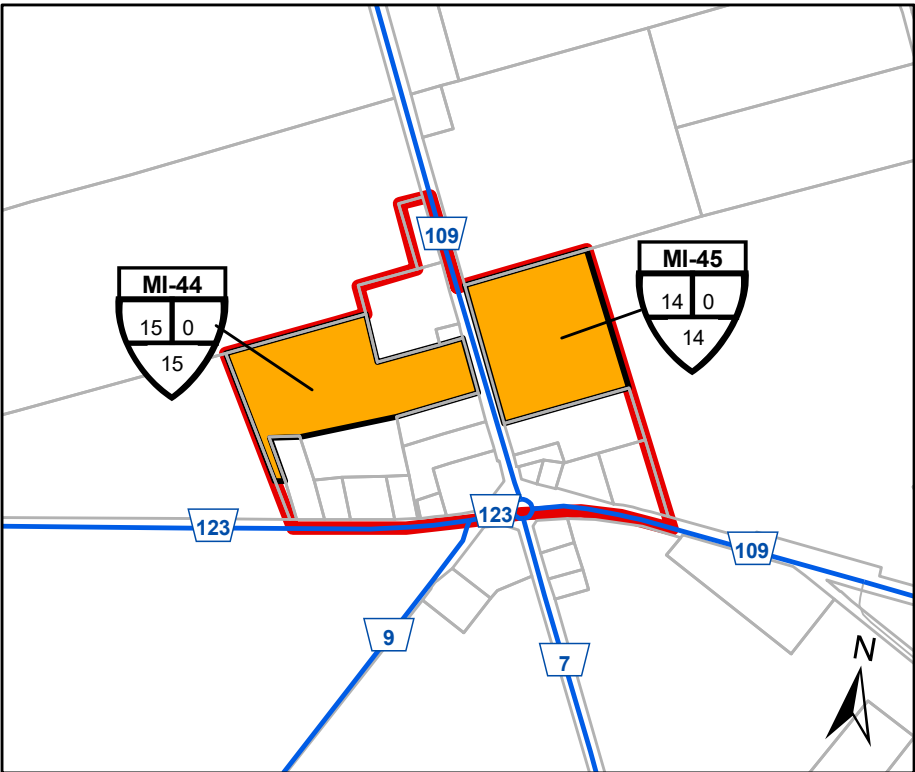
Minto Pines (MI-39), Cherry (MI-40), Thomson (MI-41), Pike Lake Expansion (MI-42)



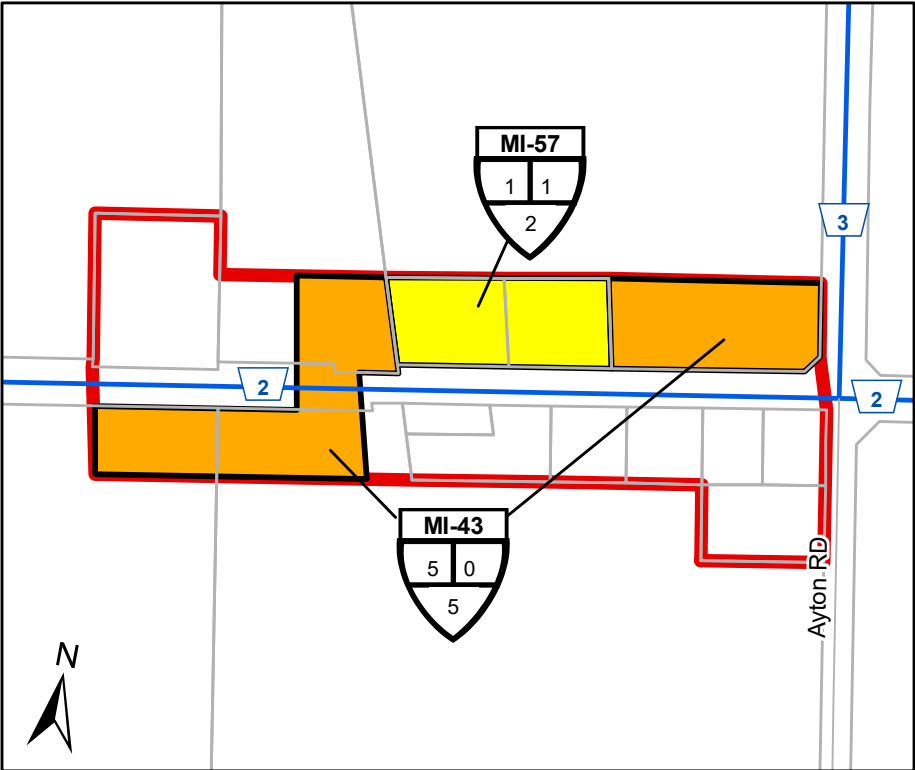
Country Lanes



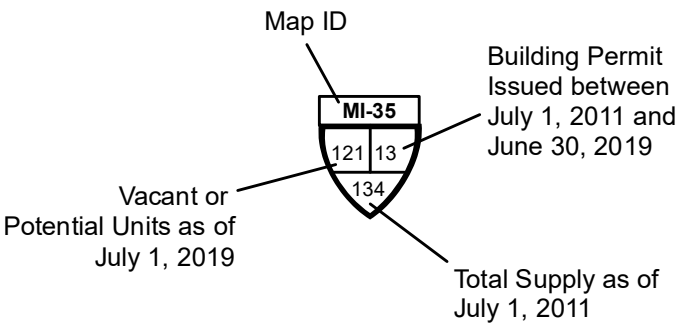
Minto Highlands



Teviodale West (MI-44) and Teviotdale East (MI-45)



Drew (MI-43 & MI-57)



Town of Minto Rural Residential Supply Inventory

THIS IS NOT SURVEY DATA
Parcels - Teranet 2002, County of Wellington 2015
Roads - County of Wellington, 2015
Includes material © 2015 of the Queen's Printer for Ontario. All Rights Reserved.

- Built Boundary
- Vacant Designated
- Application Under Review
- Draft Approved or Provisional
- Registered
- Built Out Since 2011

Minto

Employment Supply Maps

As of July 1, 2019

Employment Lands Summary
July 2019

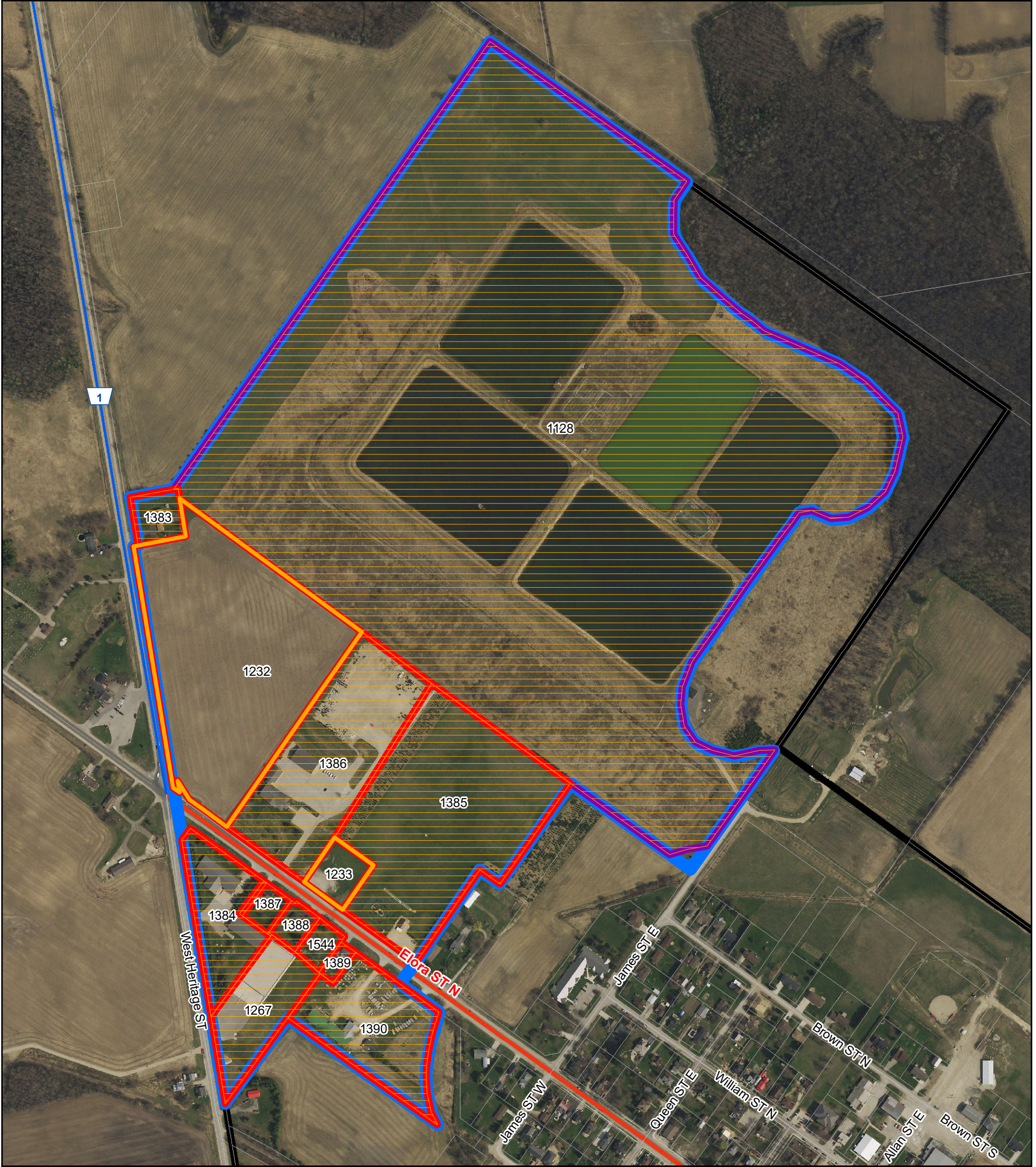
All values are in acres

Minto

	Highway Commercial					Industrial					Rural Employment				
	Absorbed since 2011	Occupied	Vacant Designated	TOTAL DESIGNATED AREA	Vacant Developable Area	Absorbed since 2011	Occupied	Vacant Designated	TOTAL DESIGNATED AREA	Vacant Developable Area	Absorbed since 2011	Occupied	Vacant Designated	TOTAL DESIGNATED AREA	Vacant Developable Area
Minto	9.13	85.03	27.95	122.11	24.83	9.88	392.17	173.88	575.93	146.13	0.00	5.00	0.00	5.00	0.00
Clifford	0.41	36.24	16.60	53.25	13.48	0.00	135.81	31.00	166.81	25.80	0.00	0.00	0.00	0.00	0.00
Industrial Lands in Clifford							115.51		115.51						
North Clifford Highway Commercial Lands		36.24	16.60	52.84	13.48										
South Clifford Industrial Area	0.41			0.41			20.30	31.00	51.30	25.80					
Harriston	0.00	14.66	0.99	15.65	0.99	6.98	167.03	89.57	263.58	72.55	0.00	0.00	0.00	0.00	0.00
Harriston Industrial Park						6.98	16.13	70.05	93.16	56.93					
Highway Commercial Lands in Harriston		14.66	0.99	15.65	0.99										
Industrial Lands in Harriston							150.90	19.52	170.42	15.62					
Palmerston	8.72	25.81	7.04	41.57	7.04	2.90	85.02	53.31	141.23	47.78	0.00	0.00	0.00	0.00	0.00
Highway Commercial Lands in Palmerston		23.48	7.04	30.52	7.04										
Industrial Lands in Palmerston							73.66	0.34	74.00	0.34					
Palmerston Industrial Park	8.72	2.33		11.05		2.90	11.36	52.97	67.23	47.44					
Teviotdale	0.00	8.32	3.32	11.64	3.32	0.00	4.31	0.00	4.31	0.00	0.00	5.00	0.00	5.00	0.00
Highway Commercial Lands in Teviotdale		8.32	3.32	11.64	3.32										
Industrial Lands in Teviotdale							4.31		4.31						
Rural Industrial Lands in Teviotdale											5.00			5.00	

NOTE:
1. The figures contained in the table and maps are subject to change during the Municipal Comprehensive Review (MCR).
2. The figures contained in the table do not include lands designated future development.

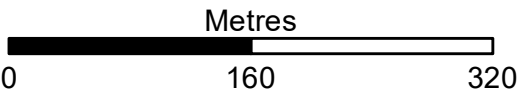
Employment Lands in Clifford (North)



Legend

- 123** Identification Number
- Highway Commercial
- Industrial
- Vacant
- Absorbed since January 2011
- Built Prior to January 2011
- Employment Map Areas

Minto
Clifford



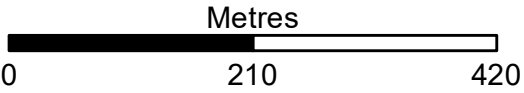
Employment Lands in Harriston (North)



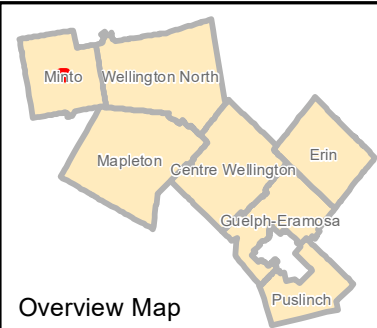
Legend

- 123 Identification Number
- Highway Commercial
- Industrial
- Vacant
- Absorbed since January 2011
- Built Prior to January 2011
- Employment Map Areas

Minto
Harriston



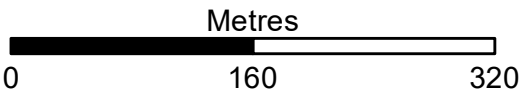
Employment Lands in Harriston (South)



Legend

- 123 Identification Number
- Highway Commercial
- Industrial
- Vacant
- Absorbed since January 2011
- Built Prior to January 2011
- Employment Map Areas

Minto
Harriston



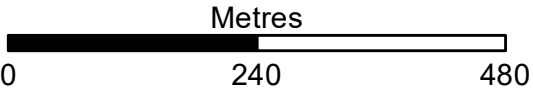
Employment Lands in Palmerston



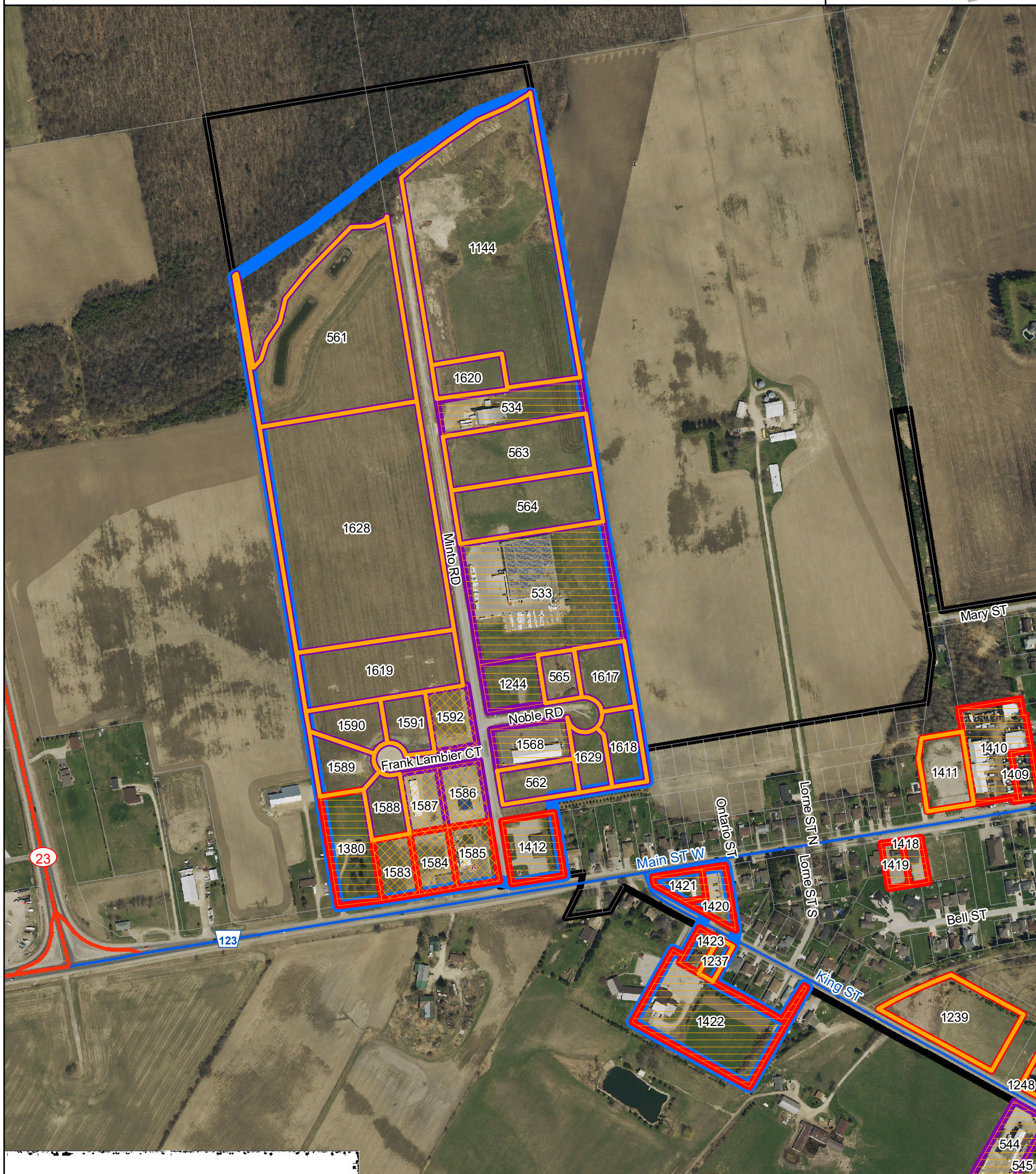
Legend

- 123 Identification Number
- Highway Commercial
- Industrial
- Vacant
- Absorbed since January 2011
- Built Prior to January 2011
- Employment Map Areas

Minto
Palmerston



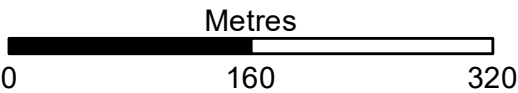
Palmerston Industrial Park and Surrounding Area



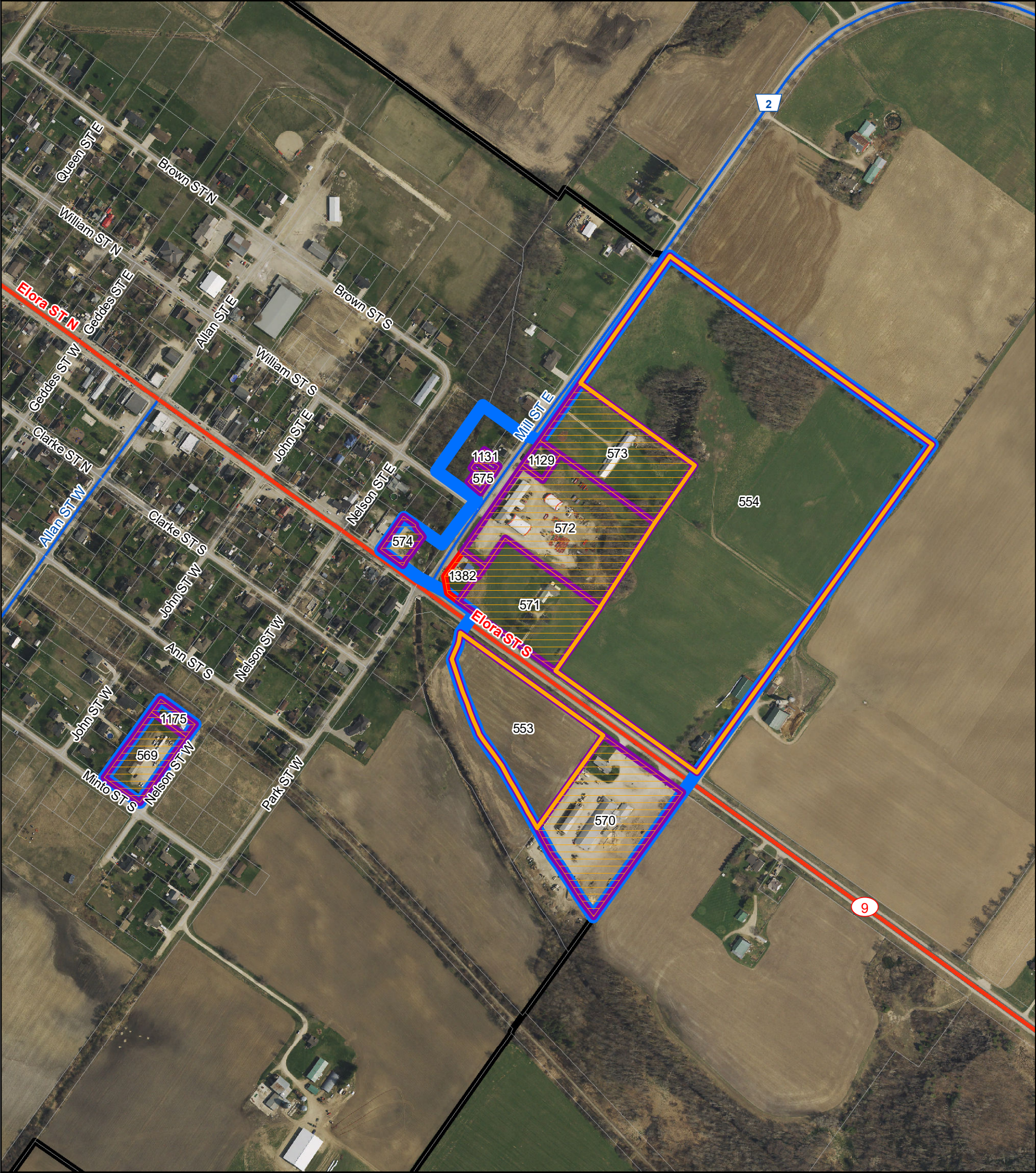
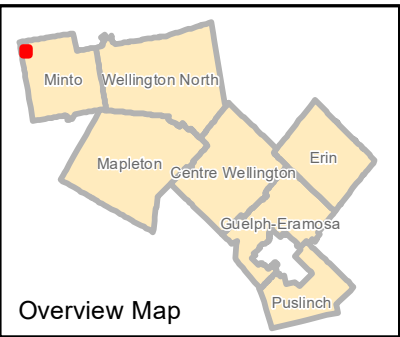
Legend

- 123** Identification Number
- Highway Commercial
- Industrial
- Vacant
- Absorbed since January 2011
- Built Prior to January 2011
- Employment Map Areas

Minto
Palmerston



South Clifford Industrial Area



Legend

- 123 Identification Number
- Highway Commercial
- Industrial
- Vacant
- Absorbed since January 2011
- Built Prior to January 2011
- Employment Map Areas

Minto
Clifford

