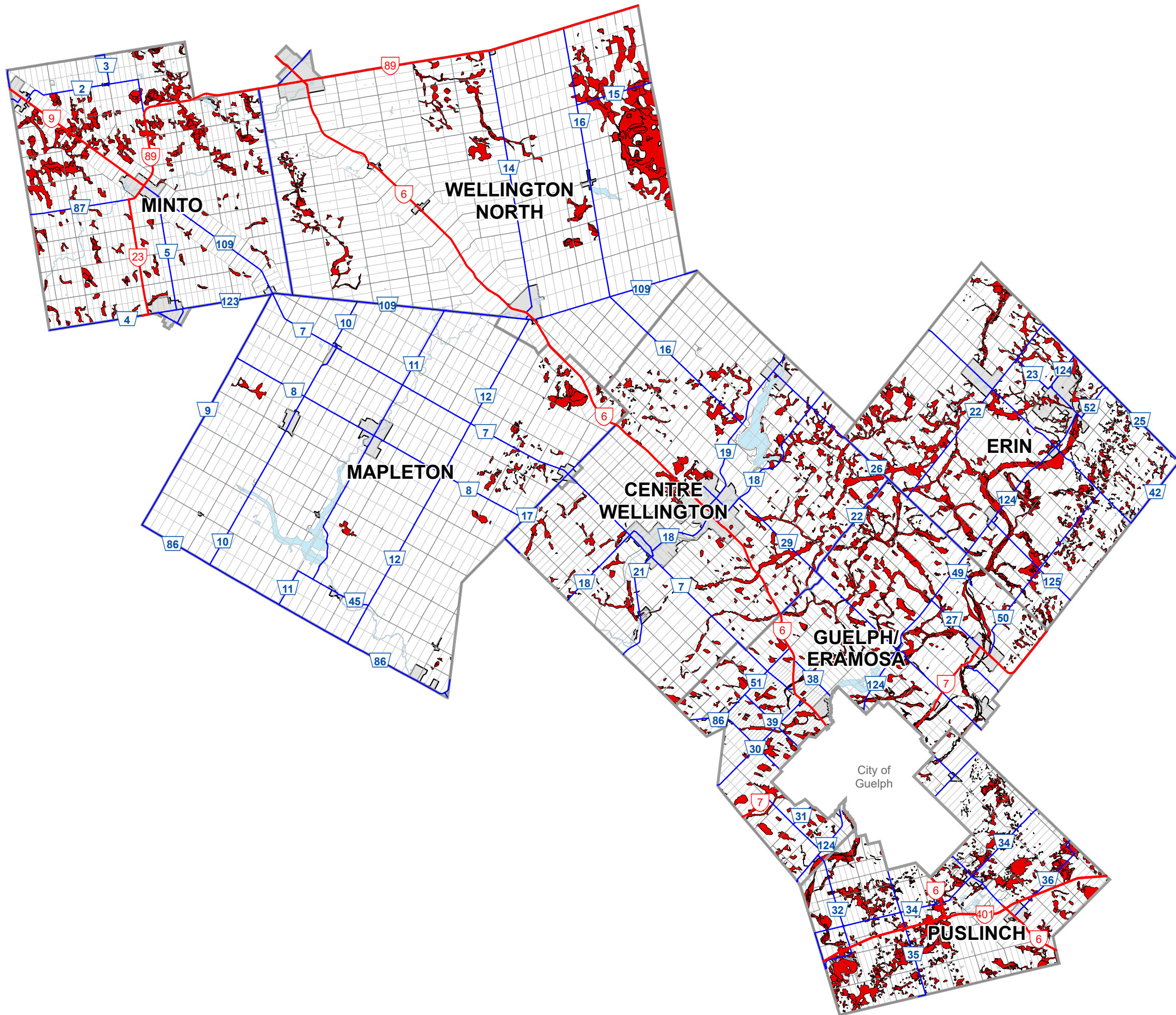


Provincially Significant Wetlands

Legend

 Provincially Significant Wetlands



Produced by: County of Wellington Planning & Development Department

This is not survey data. All rights reserved.
May not be reproduced without permission.

Sources:
County of Wellington 2025,
Ministry of Natural Resources and Forestry,
Maitland Valley Conservation Authority,
Saugeen Valley Conservation Authority,
Grand River Conservation Authority,
Credit Valley Conservation Authority,
Hamilton Conservation Authority,
Halton Conservation Authority.
© King's Printer for Ontario, 2025.



Last Revised: May 2025

