

## Where Significant Drinking Water Threat Policies Apply

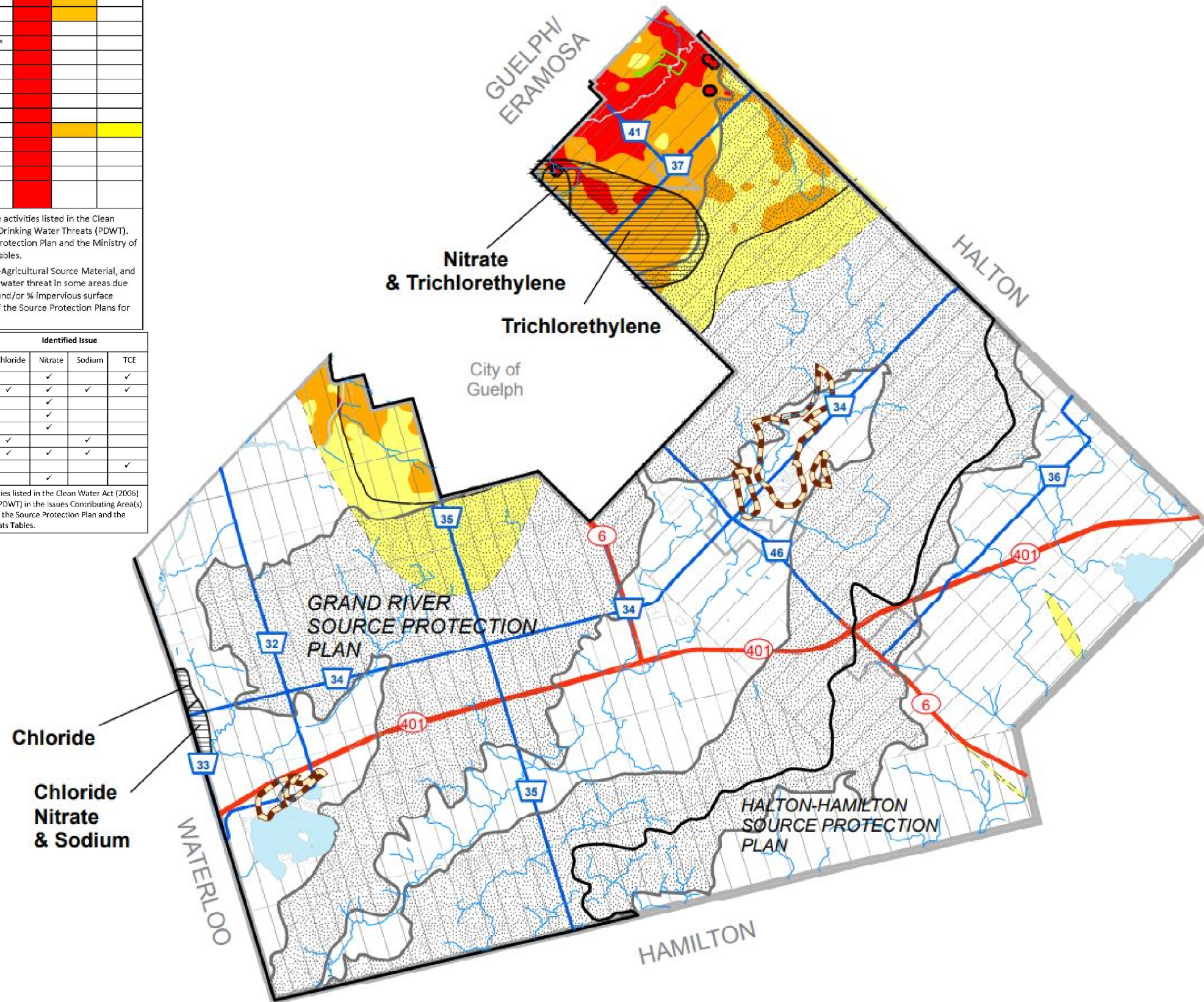
Significant Drinking Water Threat Policy Categories	Vulnerability Scores on Map		
	10	8	2,4,6
1. Waste Disposal	10	8	2,4,6
2. Sewage Systems	10	8	2,4,6
3, 4. Agricultural Source Material	10	8	2,4,6
6, 7. Non-Agricultural Source Material*	10	8	2,4,6
8, 9. Commercial Fertilizer*	10	8	2,4,6
10, 11. Pesticide	10	8	2,4,6
12, 13. Road Salt*	10	8	2,4,6
14. Storage of Snow	10	8	2,4,6
15. Fuel	10	8	2,4,6
16. DNAPLs	10	8	2,4,6
17. Organic Solvents	10	8	2,4,6
18. Aircraft De-icing	10	8	2,4,6
21. Livestock Area	10	8	2,4,6
Local Threat	10	8	2,4,6
Oil Pipelines	10	8	2,4,6

**Note:** This table provides a summary of the activities listed in the Clean Water Act (2006) that apply as Prescribed Drinking Water Threats (PDWT). For details refer to the text of the Source Protection Plan and the Ministry of the Environment Drinking Water Threats Tables.

\*Application of Commercial Fertilizer, Non-Agricultural Source Material, and Road Salt may not be a significant drinking water threat in some areas due to the % managed land, livestock density, and/or % impervious surface calculations for these areas. See the text of the Source Protection Plans for further details.

Significant Drinking Water Threat Policy Categories	Identified Issue			
	Chloride	Nitrate	Sodium	TCE
1. Waste Disposal		✓		✓
2. Sewage Systems	✓	✓	✓	✓
3, 4. Agricultural Source Material		✓		
6, 7. Non-Agricultural Source Material		✓		
8, 9. Commercial Fertilizer		✓		
12, 13. Road Salt	✓	✓	✓	
14. Storage of Snow	✓	✓	✓	
16. DNAPLs				✓
21. Livestock Area		✓		

**Note:** This table provides a summary of the activities listed in the Clean Water Act (2006) that apply as Prescribed Drinking Water Threats (PDWT) in the Issues Contributing Area(s) shown on this map. For details refer to the text of the Source Protection Plan and the Ministry of the Environment Drinking Water Threats Tables.



# Sourcewater Protection

## PUSLINCH

### Legend

Source Protection Plan Boundary

Paris Galt Moraine Policy Area

### Wellhead Protection Area

A

B

C

### Vulnerability Score

10

8

2,4,6

Issues Contributing Area

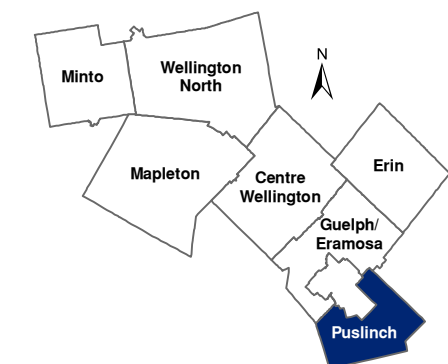
Paris Galt Moraine Policy Area

Intake Protection Zone

Private Communal System Policy Area

Please note that the Source Protection Plans are amended from time to time and for an up to date list of SPP's specific land use policies, the reader should consult the specific SPP.

These areas can be viewed in greater detail at: <http://www.wellington.ca/en/discover/maps.asp>  
Click on the "Sourcewater Protection" button.



Produced by: County of Wellington Planning & Development Department

This is not survey data. All rights reserved. May not be reproduced without permission.

Sources:  
County of Wellington 2024,  
Ministry of Natural Resources and Forestry,  
Grand River Conservation Authority,  
Halton Conservation Authority,  
Hamilton Conservation Area.  
© King's Printer for Ontario, 2024.



Last Revised: July 2024

