


Mineral Aggregate Resource Overlay

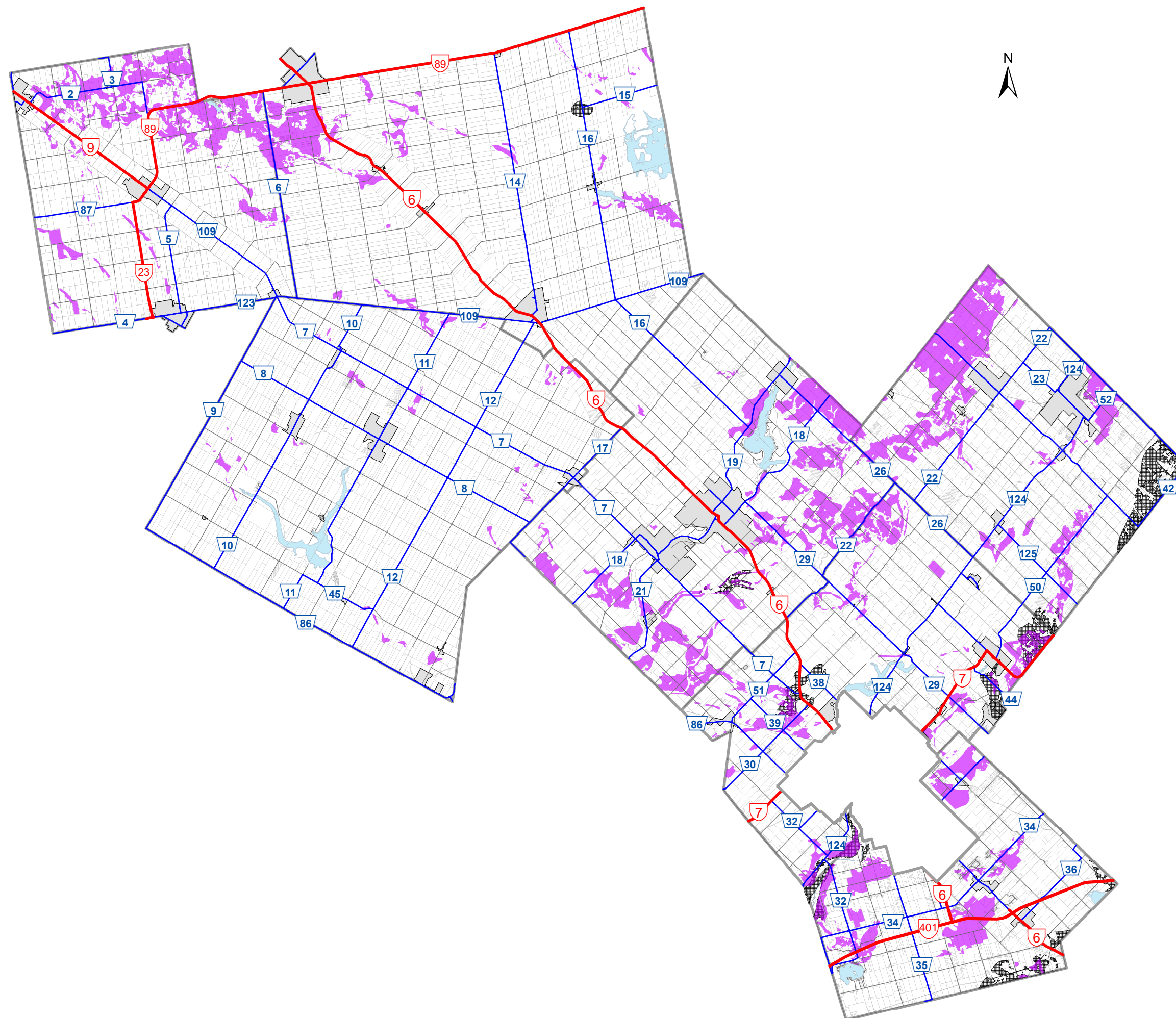
COUNTY OF WELLINGTON

Legend

 Sand and gravel resources of Primary and Secondary Significance

 Selected Bedrock Resource Areas

Licensed Aggregate Operations are identified on Appendix 2.



Produced by: County of Wellington Planning & Development Department

This is not survey data. All rights reserved.
May not be reproduced without permission.

Sources:
County of Wellington 2025,
Ministry of Natural Resources and Forestry,
Saugeen Valley Conservation Authority,
Maitland Valley Conservation Authority,
Grand River Conservation Authority,
Hamilton Conservation Authority,
Halton Conservation Authority,
Teranet 2002,
© King's Printer for Ontario, 2025.

Last Revised: December 2025

