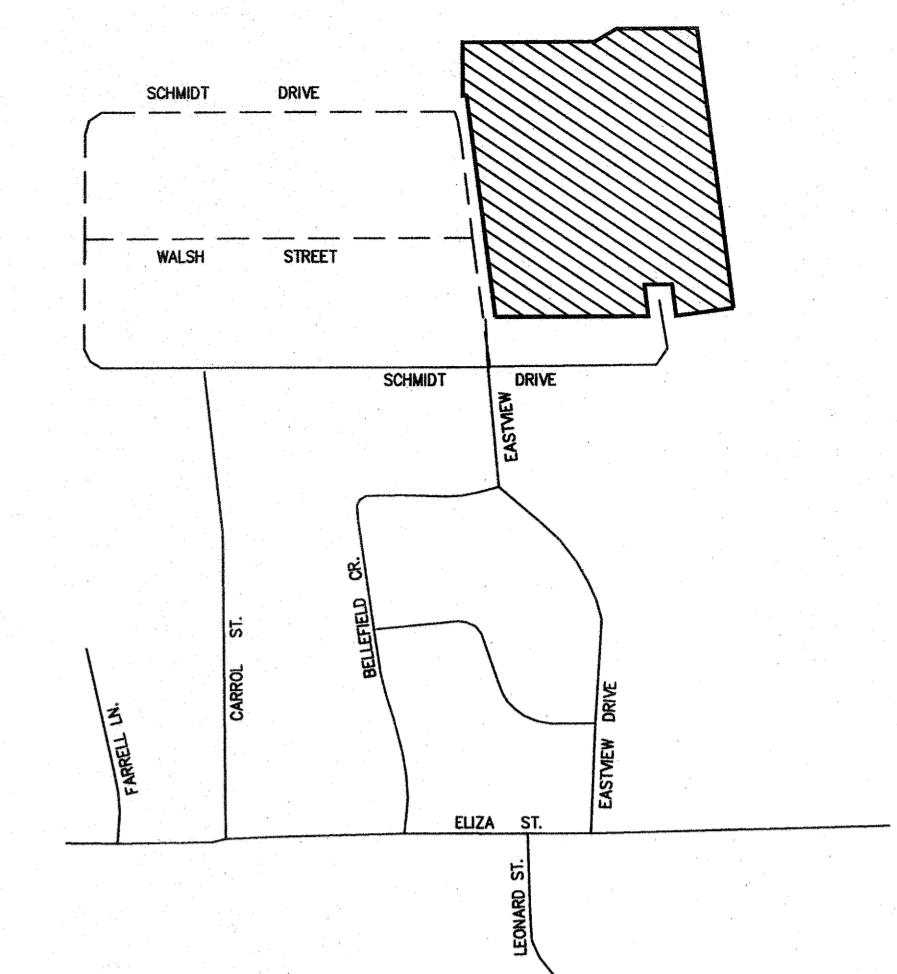
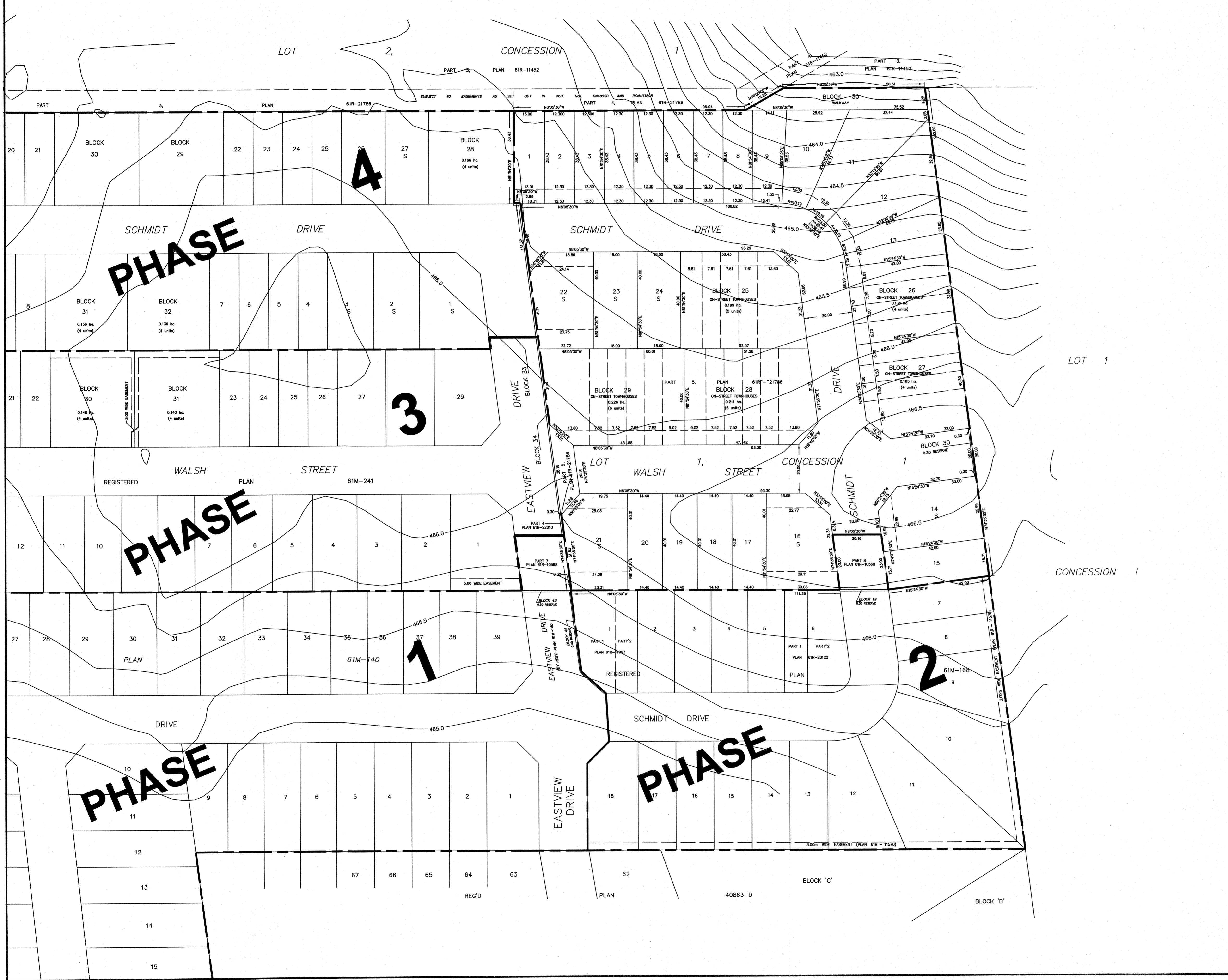


EASTRIDGE LANDING PHASE 5



KEY PLAN N.T.S. SUBJECT LANDS

ADDITIONAL INFORMATION REQUIRED UNDER SECTION 51 (17) OF THE PLANNING ACT

- 51 (17) (a) - (c) AS SHOWN
- (d) SEE SCHEDULE
- (e) - (j) AS SHOWN
- (h) MUNICIPAL WATER SUPPLY
- (i) HARRISTON LOAM - GOOD DRAINAGE
- (j) AS SHOWN
- (k) MUNICIPAL STORM AND SANITARY SEWERS
- (l) AS SHOWN

OWNERS CERTIFICATE

WE HEREBY AUTHORIZE J.D. BARNES LIMITED TO SUBMIT THIS DRAFT PLAN OF PROPOSED SUBDIVISION.

August 6th, 2024
DATE

[Signature]
THOMAS J. SALB
2022/2022 ONTARIO INC.

SURVEYOR'S CERTIFICATE

I HEREBY CERTIFY THAT THE BOUNDARIES OF THE LANDS TO BE SUBDIVIDED AND THEIR RELATIONSHIP TO THE ADJACENT LANDS ARE ACCURATELY AND CORRECTLY SHOWN.

August 1st 2024
DATE

[Signature]
THOMAS J. SALB
ONTARIO LAND SURVEYOR

RELEVANT INFORMATION

LAND USE	LOTS/BLOCKS	UNITS	AREA
SINGLE FAMILY	LOTS 1-13, 15 & 17-20	18	1,080 ha.
SEMI-DETACHED	LOTS 14, 16 & 21-24	12	0,553 ha.
ON-STREET TOWNHOUSES	BLOCKS 25-29	25	0,934 ha.
WALKWAY	BLOCK 30		0,061 ha.
STREETS			0,826 ha.
TOTAL UNITS		55 UNITS	
TOTAL AREA			3,454 ha.

NOTES:
CONTOURS AND ELEVATIONS FROM G.R.C.A. WEBSITE MAPPING.

DRAFT PLAN OF SUBDIVISION

OF PART OF LOT 1, CONCESSION 1
(GEOGRAPHIC TOWNSHIP OF LUTHER)
TOWNSHIP OF WELLINGTON NORTH
COUNTY OF WELLINGTON
BLACK, SHOEMAKER, ROBINSON & DONALDSON LIMITED

SCALE 1 : 750

METRIC: DISTANCES AND ELEVATIONS SHOWN ON THIS PLAN ARE IN METRES AND CAN BE CONVERTED TO FEET BY DIVIDING BY 0.3048.

© 2021 NO PERSON MAY COPY, DISTRIBUTE OR ALTER THIS PLAN IN WHOLE OR IN PART WITHOUT THE WRITTEN PERMISSION OF J.D. BARNES LIMITED

DRAWN BY: KS CHECKED BY: LL REFERENCE NO.: 17-14-384-01-B
FILE: G:\17-14-384\01\Drawing\171438401B.dwg DATED: JULY 28, 2021