

LOCATION OF TREES TO BE STAKED AND APPROVED BY LANDSCAPE ARCHITECT PRIOR TO INSTALLATION OF TREES. FIELD FIT TO AVOID DRIVEWAY, UTILITIES AND PROPOSED LINES.

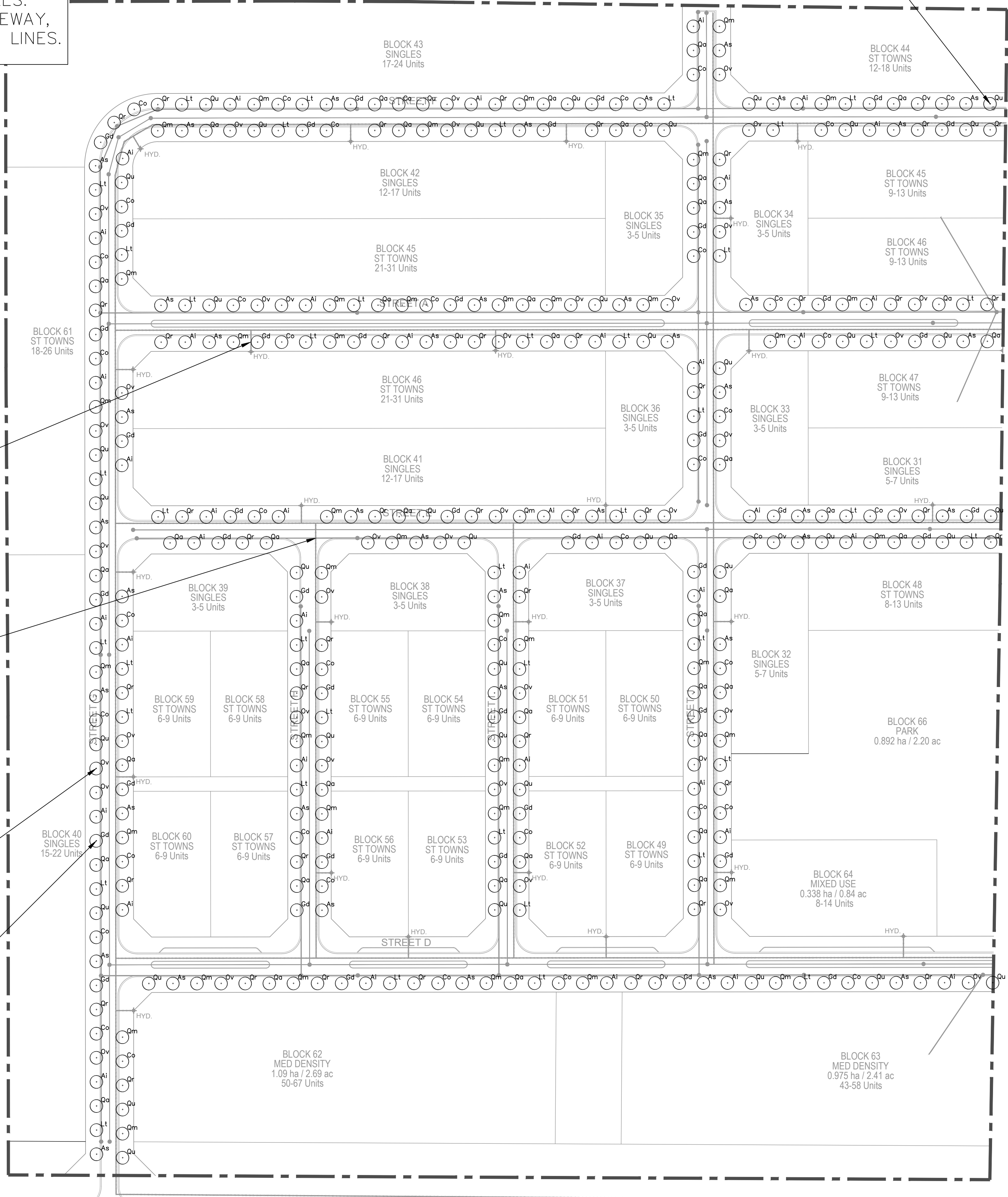
COORDINATE PLANTING WITH SOUTH LANDS TO MAINTAIN CONSISTENT SPACING

MINIMUM PLANTING DISTANCE FROM DRIVEWAY, UTILITIES, HYDRANTS 1.5M TYP.

SEE SERVICING PLAN BY OTHERS FOR DETAILS OF SUBSURFACE INFRASTRUCTURE

DECIDUOUS TREE TYP. - SEE DETAILS 1&3 ON SHEET D1 FOR PLANTING INSTRUCTION - SEE TABLE 1 FOR SPECIES AND QUANTITIES

SPACING 10M O.C. TYP. WHERE DRIVEWAYS ABSENT



NOTE 1: GENERAL

1. ANY AMBIGUITY IN THESE DRAWINGS IS TO BE REPORTED TO THE LANDSCAPE ARCHITECT. CONTRACTOR IS NOT TO PROCEED IN UNCERTAINTY.
2. CONTRACTOR SHALL VISIT THE SITE TO CONFIRM ALL SITE CONDITIONS PRIOR TO SUBMITTING BIDS. DISCREPANCIES TO BE REPORTED TO THE LANDSCAPE ARCHITECT FOR CLARIFICATION.
3. UPON COMPLETION EACH DAY, REMOVE ALL DEBRIS, GARBAGE AND SURPLUS MATERIAL FROM THE SITE. KEEP THE SITE CLEAN AND USABLE AT ALL TIMES.
4. CONTRACTOR SHALL SUPPLY ALL PLANTS AND MATERIALS IN QUANTITIES SUFFICIENT TO COMPLETE WORK SHOWN ON SHEET L1.
5. PLANT MATERIALS COLLECTED FROM WILD SOURCES WILL NOT BE ACCEPTED. THE CONTRACT ADMINISTRATOR MAY REQUIRE THAT SUPPLIER'S INVOICES FOR PLANT MATERIALS BE SUBMITTED FOR INSPECTION.
6. ANY SUBSTITUTION OF PLANT MATERIAL WILL REQUIRE THE WRITTEN APPROVAL OF LANDSCAPE ARCHITECT.
7. THE LANDSCAPE ARCHITECT RESERVES THE RIGHT TO REFUSE ACCEPTANCE OF ANY PLANT DISPLAYING POOR GROWTH HABITS, INJURY OR DISEASE. ANY PLANT MATERIAL THAT IS REJECTED BY THE LANDSCAPE ARCHITECT WILL BE PROMPTLY REMOVED FROM THE SITE AND REPLACED BY THE CONTRACTOR AT NO ADDITIONAL COST TO THE PROJECT.

NOTE 2: PLANTING

1. ALL PLANTS SHALL BE PLANTED IN ACCORDANCE WITH THE APPROPRIATE PLANTING DETAILS ON THE DRAWINGS AND WRITTEN SPECIFICATIONS.
2. LOCATION OF TREES TO BE STAKED AND APPROVED BY LANDSCAPE ARCHITECT PRIOR TO INSTALLATION OF TREES. FIELD FIT TO AVOID DRIVEWAY, UTILITIES AND PROPOSED LINES.
3. ALL PLANTS ARE TO BE PLANTED IN 600MM APPROVED TOP SOIL, SCREENED AND FREE FROM WEEDS, SUBSOIL, ROOTS, STONES, LUMPS OF CLAY AND TOXIC MATERIAL AND IN ACCORDANCE WITH MUNICIPAL GUIDELINES FOR SCREENED TOPSOIL COMPOSITION.
4. PLANT SO THAT NURSERY SOIL LINE MATCHES FINISHED GRADE AFTER SETTLING.
5. GENTLY TAMP TOPSOIL WHEN BACKFILLING TO REMOVE AIR POCKETS.
6. BUILD A SOIL SAUCER AROUND OUT EDGE OF PLANTING HOLE. SAUCER SHALL BE SOAKED WITH WATER AND COVERED WITH MULCH IMMEDIATELY FOLLOWING PLANTING.
7. ALL INDIVIDUAL TREE WHIPS AND SHRUBS ARE TO BE MULCHED USING SHREDDED BARK MULCH AS PER DETAILS AND PLANTING SPECIFICATIONS.
8. ALL PLANTS TO BE TREATED WITH RODENT REPELLENT AS PER SPECIFICATIONS.
9. INSTALL PLASTIC PERFORATED SPIRALED STRIP TRUNK PROTECTION ON ALL DECIDUOUS TREES AS PER DETAILS AND SPECIFICATIONS.
10. REMOVE ALL NURSERY TAGS, METAL OR PLASTIC BINDINGS, AND VINE SUPPORTS.
11. ALL PLANTS ARE TO RECEIVE MAINTENANCE IN ACCORDANCE WITH WRITTEN SPECIFICATIONS THROUGHOUT THE WARRANTY PERIOD.

TABLE 1

Quantity	Code	Scientific Name	Common Name	Size	Condition	Spacing
Trees-Deciduous						
41	As	<i>Acer saccharum</i>	Sugar Maple	60 mm cal.	W.B. or B&B	See Drawing
41	Ai	<i>Acer saccharinum</i>	Silver Maple	60 mm cal.	W.B. or B&B	See Drawing
41	Co	<i>Celtis occidentalis</i>	Common Hackberry	60 mm cal.	W.B. or B&B	See Drawing
41	Gd	<i>Gymnocladus dioica</i>	Kentucky Coffee Tree	60 mm cal.	W.B. or B&B	See Drawing
41	Lt	<i>Liriodendron tulipifera</i>	Tulip Tree	60 mm cal.	W.B. or B&B	See Drawing
41	Ov	<i>Ostrya virginiana</i>	Hop Hombeam	60 mm cal.	W.B. or B&B	See Drawing
41	Qa	<i>Quercus alba</i>	White Oak	60 mm cal.	W.B. or B&B	See Drawing
41	Qm	<i>Quercus macrocarpa</i>	Bur Oak	60 mm cal.	W.B. or B&B	See Drawing
41	Qr	<i>Quercus rubra</i>	Northern Red Oak	60 mm cal.	W.B. or B&B	See Drawing
41	Qu	<i>Quercus muehlenbergii</i>	Chinqupin Oak	60 mm cal.	W.B. or B&B	See Drawing
410	Total Trees					

LEGEND

Deciduous Tree

x	xx	YYYY/MM/DD
No.	Description	Date

Revisions

STREET TREE PLAN - NORTH

Project: ST. DAVID'S

Client: POLOCORP

3-7 Edinburgh Rd South, Guelph, ON N1H 5N8
www.dougan.ca

North

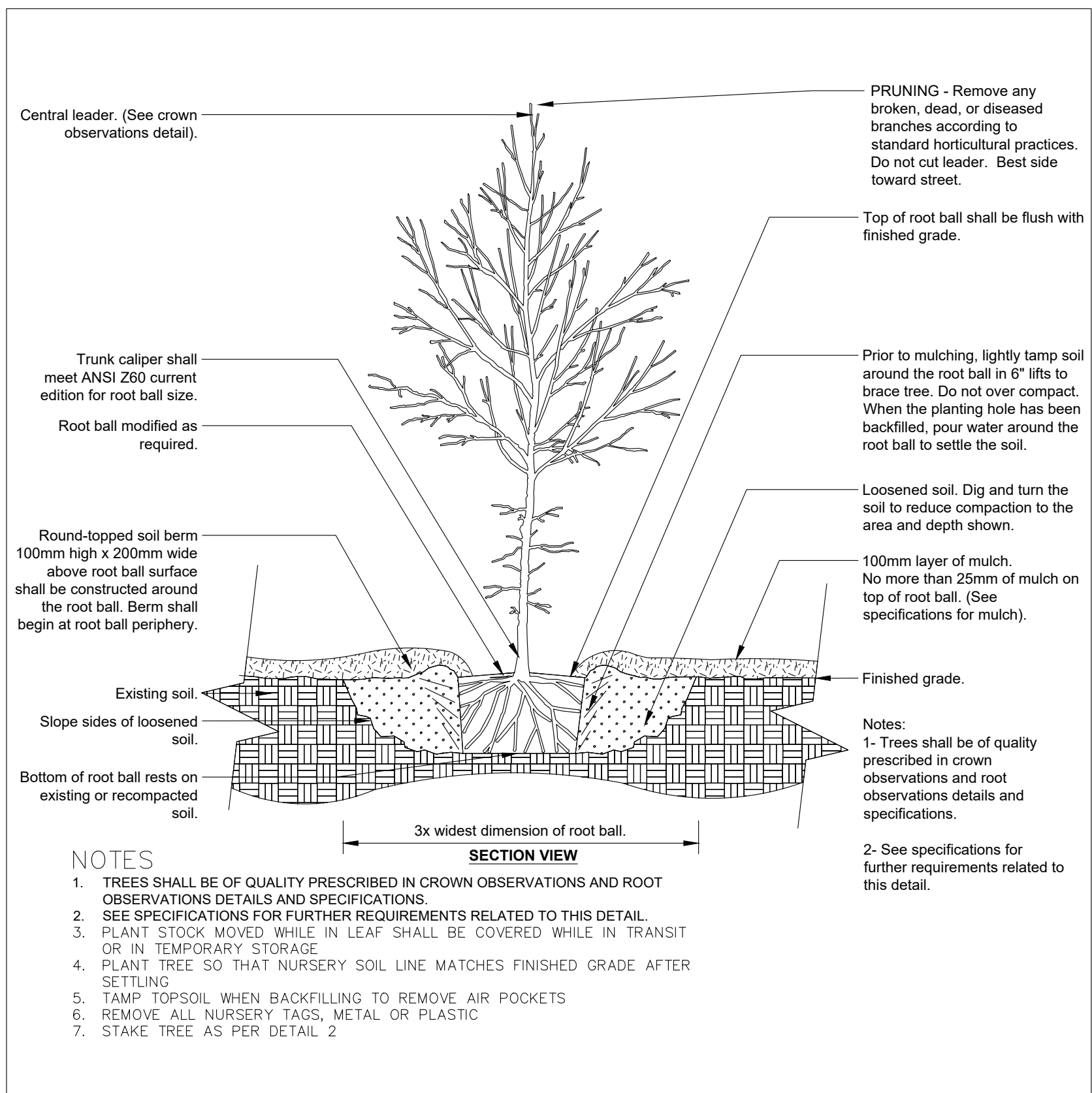
Date: 2025/03/12

Scale: 1:1000

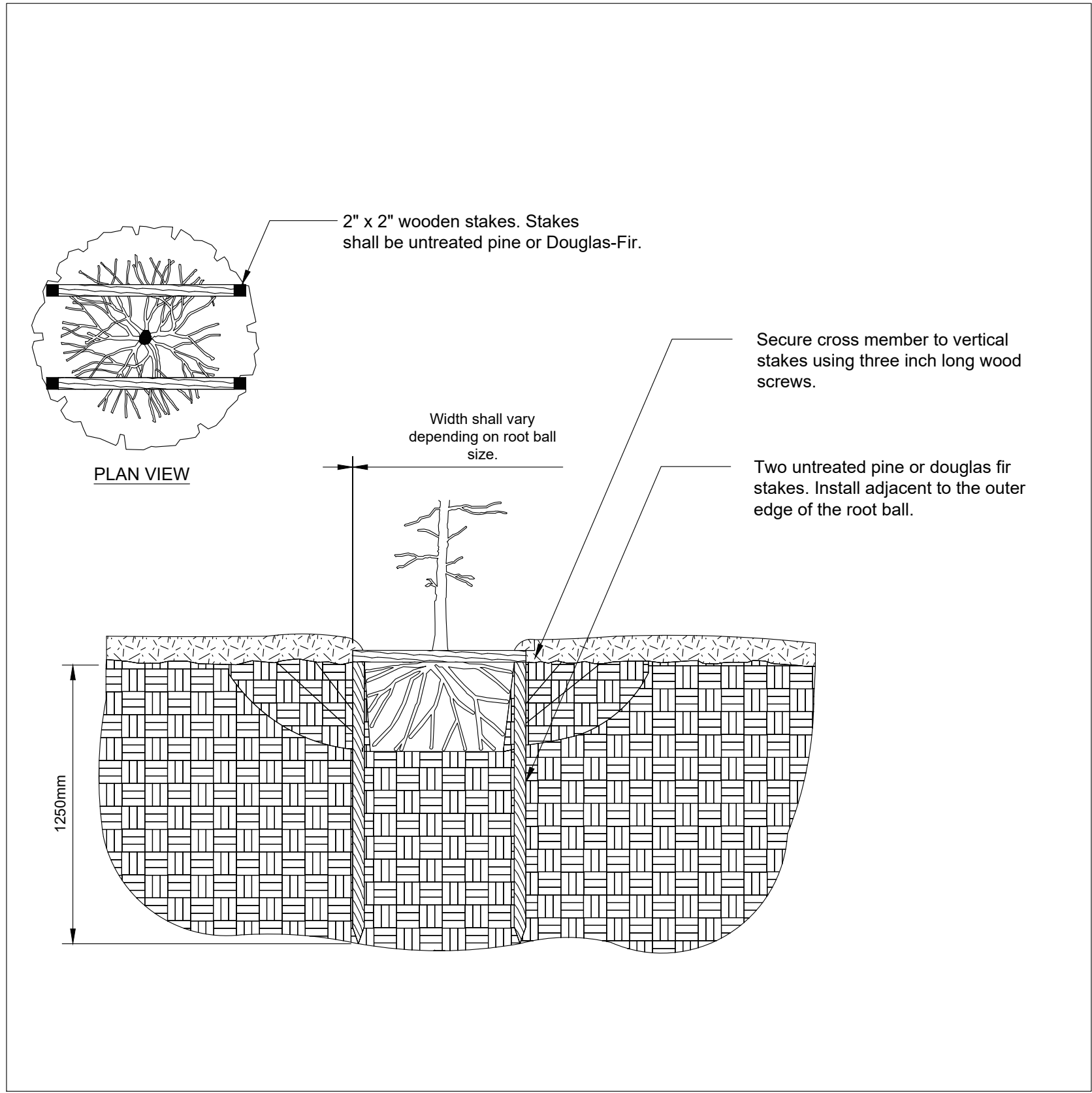
Drawn By: LD

Checked By: NAME

Figure Number:
L1



① DECIDUOUS TREE – TYPICAL
N.T.S.



② TREE STAKING – STAPLE
N.T.S.

No.	Description	Date
x	xx	YYYY/MM/DD

Revisions

--	--

DETAILS

Project: ST. DAVID'S

Client: POLOCORP INC.

3-7 Edinburgh Rd South, Guelph, ON N1H 5N8
www.dougan.ca

Date: 2025/03/12
Scale: N.T.S.
Drawn By: LD
Checked By: NAME

Figure Number:
D1