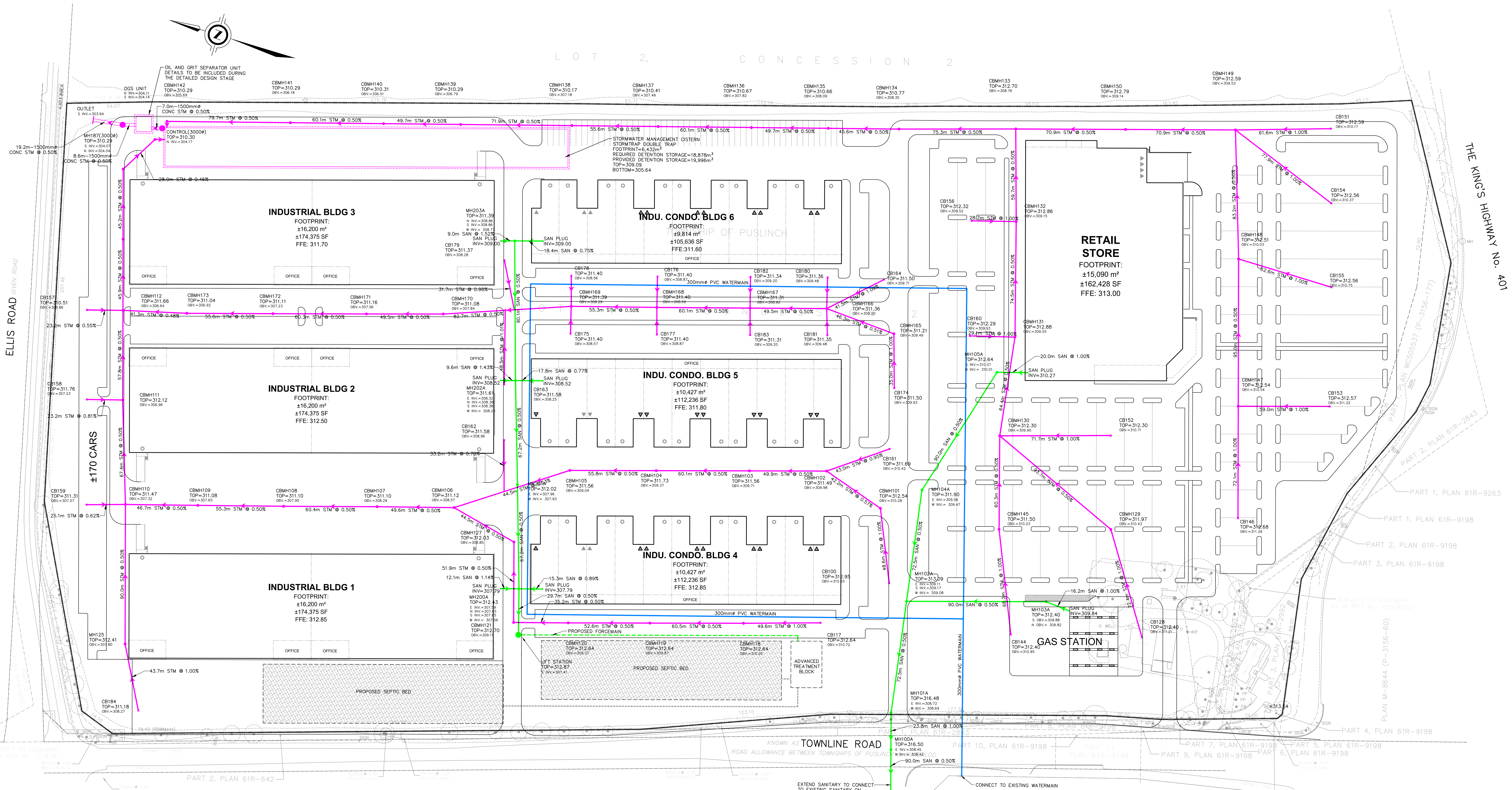


LOT 2, CONCESSION 2



LEGEND

- PROPOSED STORM SEWER
- PROPOSED SANITARY SEWER
- PROPOSED WATERMAIN

CITY OF CAMBRIDGE

ISSUED FOR JEP	04/11/20
REVISION/NO.	001

HUSSON
ENGINEERING + MANAGEMENT
P. 905.709.5805
300 CACKETT WOODS COURT, SUITE 204
MARRHAM, ON L9C 0Z8
HUSSON.CA

2809 TOWNLIN ROAD
PUSLINC, ONTARIO

FUNCTIONAL SERVING PLAN

251619	SW2
25-11-12	
11000	