



ACC

ARCHAEOLOGICAL
CONSULTANTS CANADA

Stage 1 & 2 Archaeological Assessment

Proposed Commercial Development

2809 Townline Road, Part of Lot 1, Concession 2, Former Geographic Township
of Puslinch, Wellington County, Ontario

Supplementary Documentation

Prepared for:

Ontario Ministry of Citizenship and Multiculturalism

Prepared by:

Archaeological Licensee: Kristy O'Neal, M.A. P066

Archaeological Consultants Canada

1042 Garner Road West, Unit A101

Ancaster, ON L9G 3K9

www.onarch.ca

info@onarch.ca

289.683.7844

PIF# P066-0578-2025

Project No. 353-12-23

September 16, 2025

TABLE OF CONTENTS

- 1.0 GPS COORDINATES FOR SITES FOUND DURING STAGE 2 ASSESSMENT
- 2.0 LOCATION MAPPING FOR SITES FOUND DURING STAGE 2 ASSESSMENT

LIST OF FIGURES

- SD 1: Aerial Photograph Showing the Results of the Stage 2 Archaeological Assessment with Indigenous Site Locations
- SD 2: Aerial Photograph Showing the Results of the Stage 2 Archaeological Assessment with Euro-Canadian Site Locations
- SD 3: Results of the Stage 2 Archaeological Assessment within Site AiHb-389 & AiHb-390



1.0 GPS COORDINATES FOR SITES FOUND DURING STAGE 2 ASSESSMENT

Each site location was recorded using a Global Positioning System (Garmin Etrex) with an accuracy of better than 3 m. The position of two fixed reference landmarks were also recorded. The site is located within Universal Transverse Mercator Zone 17. North American Datum 1983 was used. No method of correction was used.

Table 1: GPS Coordinates for Sites

SITE	LOCATION OF READING (WAYPOINT)	GPS COORDINATES		
		EASTING	NORTHING	ELEVATION (Metres)
P1	3446	557876	4808408	314
P2	3447	557888	4808683	311
P3	3449	558026	4808246	316
P4	3601	557984	4808248	316
P5	3633	558147	4808068	314
P6	3634	558078	4808154	313
P7	3636	558089	4808182	314
P8	3640	558084	4808870	310
	3629	558087	4808873	310
P9	3641	558076	4808273	315
P10	3642	558101	4808211	313
P11	3643	558074	4808177	313
P12	3610	558188	4808634	310
AiHb-389	3450	558044	4808232	316
	3451	558050	4808232	316
	3452	558056	4808235	316
	3453	558060	4808235	316
	3454	558069	4808237	316
	3455	558072	4808239	316
	3456	558067	4808238	316
	3457	558065	4808240	316
	3458	558064	4808243	316
	3459	558059	4808240	316
	3460	558055	4808240	316
	3461	558051	4808237	316
	3462	558049	4808239	316
	3463	558046	4808236	316
	3464	558038	4808232	316
3465	558038	4808227	316	



Stage 1 & 2 Archaeological Assessment
2809 Townline Road
Township of Puslinch, Wellington County, ON

SITE	LOCATION OF READING (WAYPOINT)	GPS COORDINATES		
		EASTING	NORTHING	ELEVATION (Metres)
	3466	558023	4808227	316
	3467	558017	4808225	316
	3468	558015	4808217	316
	3469	558012	4808221	316
	3470	558017	4808230	316
	3471	558025	4808229	316
	3472	558026	4808229	316
	3473	558027	4808232	316
	3474	558036	4808238	316
	3475	558039	4808240	316
	3476	558043	4808241	316
	3477	558043	4808241	316
	3478	558045	4808244	316
	3479	558048	4808242	316
	3480	558050	4808240	316
	3481	558051	4808243	316
	3482	558055	4808244	316
	3483	558054	4808246	316
	3484	558055	4808249	316
	3485	558051	4808247	316
	3486	558048	4808247	316
	3487	558045	4808247	316
	3488	558040	4808246	316
	3489	558037	4808246	316
	3490	558035	4808243	316
	3491	558030	4808243	316
	3492	558029	4808241	316
	3493	558027	4808238	316
	3494	558026	4808240	316
	3495	558025	4808240	316
	3496	558022	4808236	316
	3497	558017	4808234	316
	3498	558011	4808232	316
	3499	558009	4808236	316
	3500	558014	4808236	316
	3501	558015	4808237	316
	3502	558019	4808237	316



Stage 1 & 2 Archaeological Assessment
2809 Townline Road
Township of Puslinch, Wellington County, ON

SITE	LOCATION OF READING (WAYPOINT)	GPS COORDINATES		
		EASTING	NORTHING	ELEVATION (Metres)
	3503	558019	4808237	316
	3504	558018	4808238	316
	3505	558019	4808238	316
	3506	558022	4808238	316
	3507	558022	4808240	316
	3508	558024	4808240	316
	3509	558024	4808242	316
	3510	558026	4808244	316
	3511	558028	4808242	316
	3512	558029	4808245	316
	3513	558033	4808246	316
	3514	558036	4808246	316
	3515	558039	4808248	316
	3516	558040	4808250	316
	3517	558043	4808249	316
	3518	558044	4808249	316
	3519	558046	4808248	316
	3520	558052	4808250	316
	3521	558059	4808256	316
	3522	558055	4808256	316
	3523	558046	4808252	316
	3524	558042	4808256	316
	3525	558034	4808249	316
	3526	558031	4808249	316
	3527	558027	4808248	316
	3528	558025	4808246	316
	3529	558024	4808247	316
	3530	558018	4808242	316
	3531	558015	4808241	316
	3532	558013	4808240	316
	3533	558009	4808241	316
	3534	558004	4808239	316
	3535	558002	4808238	316
	3536	558007	4808241	316
	3537	558009	4808241	316
	3538	558012	4808242	316
	3539	558013	4808243	316



Stage 1 & 2 Archaeological Assessment
2809 Townline Road
Township of Puslinch, Wellington County, ON

SITE	LOCATION OF READING (WAYPOINT)	GPS COORDINATES		
		EASTING	NORTHING	ELEVATION (Metres)
	3540	558015	4808243	316
	3541	558016	4808244	316
	3542	558017	4808244	316
	3543	558020	4808244	316
	3544	558023	4808246	316
	3545	558026	4808248	316
	3546	558026	4808251	316
	3547	558033	4808254	316
	3548	558033	4808258	316
	3549	558033	4808260	316
	3550	558023	4808253	316
	3551	558020	4808252	316
	3552	558020	4808251	316
	3553	558018	4808249	316
	3554	558019	4808247	316
	3555	558016	4808247	316
	3556	558014	4808245	316
	3557	558012	4808246	316
	3558	558008	4808246	316
	3559	558004	4808245	316
	3560	557999	4808243	316
	3561	557995	4808243	316
	3562	557992	4808245	316
	3563	557987	4808245	316
	3564	558001	4808248	316
	3565	558004	4808246	316
	3566	558007	4808246	316
	3567	558010	4808247	316
	3568	558013	4808247	316
	3569	558015	4808248	316
	3570	558018	4808249	316
	3571	558025	4808253	316
	3572	558028	4808256	316
	3573	558019	4808255	316
	3574	558019	4808252	316
	3575	558017	4808252	316
	3576	558016	4808253	316



Stage 1 & 2 Archaeological Assessment
2809 Townline Road
Township of Puslinch, Wellington County, ON

SITE	LOCATION OF READING (WAYPOINT)	GPS COORDINATES		
		EASTING	NORTHING	ELEVATION (Metres)
	3577	558015	4808250	316
	3578	558013	4808252	316
	3579	558011	4808252	316
	3580	558010	4808249	316
	3581	558008	4808249	316
	3582	558009	4808252	316
	3583	558004	4808248	316
	3584	558002	4808248	316
	3585	558001	4808250	316
	3586	558000	4808254	316
	3587	558007	4808256	316
	3588	558014	4808254	316
	3589	558018	4808253	316
	3590	558021	4808258	316
	3591	558025	4808260	316
	3592	558031	4808265	316
	3593	558062	4808261	316
	3594	558001	4808247	316
	3595	557997	4808258	316
	3596	557994	4808255	316
	3597	557991	4808251	316
	3598	557988	4808244	316
	3599	557980	4808242	316
	3600	558011	4808240	316
AiHb-390	3602	558065	4808128	315
	3603	558062	4808128	315
	3604	558061	4808125	315
	3605	558061	4808126	315
	3606	558060	4808128	315
	3607	558060	4808131	315
	3608	558066	4808133	315
	3644	558074	4808189	315
	3645	558068	4808188	315
	3646	558067	4808185	315
	3647	558069	4808186	315
	3648	558071	4808186	315
	3649	558075	4808187	315



Stage 1 & 2 Archaeological Assessment
2809 Townline Road
Township of Puslinch, Wellington County, ON

SITE	LOCATION OF READING (WAYPOINT)	GPS COORDINATES		
		EASTING	NORTHING	ELEVATION (Metres)
	3650	558078	4808186	315
	3651	558075	4808185	315
	3652	558070	4808182	315
	3653	558069	4808182	315
	3654	558066	4808182	315
	3655	558063	4808180	315
	3656	558056	4808182	315
	3657	558058	4808176	315
	3658	558065	4808178	315
	3659	558066	4808179	315
	3660	558068	4808180	315
	3661	558070	4808180	315
	3662	558071	4808180	315
	3663	558074	4808181	315
	3664	558075	4808181	315
	3665	558076	4808180	315
	3666	558076	4808180	315
	3667	558078	4808183	315
	3668	558084	4808183	315
	3669	558089	4808183	315
	3670	558084	4808182	315
	3671	558082	4808182	315
	3672	558081	4808181	315
	3673	558081	4808182	315
	3674	558077	4808180	315
	3675	558076	4808179	315
	3676	558076	4808178	315
	3677	558075	4808181	315
	3678	558075	4808182	315
	3679	558074	4808181	315
	3680	558072	4808180	315
	3681	558072	4808179	315
	3682	558071	4808179	315
	3683	558068	4808178	315
	3684	558066	4808177	315
	3685	558068	4808177	315
	3686	558064	4808176	315



Stage 1 & 2 Archaeological Assessment
2809 Townline Road
Township of Puslinch, Wellington County, ON

SITE	LOCATION OF READING (WAYPOINT)	GPS COORDINATES		
		EASTING	NORTHING	ELEVATION (Metres)
	3687	558071	4808175	315
	3688	558074	4808175	315
	3689	558075	4808177	315
	3690	558077	4808177	315
	3691	558077	4808174	315
	3692	558073	4808173	315
	3693	558071	4808172	315
	3694	558062	4808172	315
	3695	558055	4808168	315
	3696	558058	4808167	315
	3697	558059	4808164	315
	3698	558061	4808161	315
	3699	558056	4808160	315
	3700	558054	4808159	315
	3701	558058	4808157	315
	3702	558052	4808155	315
	3703	558053	4808154	315
	3704	558057	4808147	315
	3705	558060	4808149	315
	3706	558060	4808152	315
	3707	558062	4808151	315
	3708	558060	4808149	315
	3709	558060	4808147	315
	3710	558066	4808149	315
	3711	558071	4808148	315
	3712	558076	4808142	315
	3713	558073	4808138	315
	3714	558079	4808137	315
	3715	558067	4808141	315
	3716	558062	4808143	315
	3717	558060	4808142	315
	3718	558056	4808143	315
	3719	558058	4808137	315
	3720	558056	4808135	315
	3721	558059	4808133	315
	3722	558062	4808136	315
	3723	558067	4808134	315



Stage 1 & 2 Archaeological Assessment
2809 Townline Road
Township of Puslinch, Wellington County, ON

SITE	LOCATION OF READING (WAYPOINT)	GPS COORDINATES		
		EASTING	NORTHING	ELEVATION (Metres)
	3724	558073	4808129	315
	3725	558063	4808131	315
	3726	558061	4808130	315
	3727	558060	4808123	315
	3728	558062	4808120	315
	3729	558064	4808120	315
	3730	558064	4808116	315
	3731	558068	4808115	315
	3732	558070	4808113	315
	3733	558069	4808109	315
	3734	558064	4808110	315
	3735	558063	4808111	315
FIXED REFERENCE LANDMARKS				
LOCATION OF READING	GPS COORDINATES			
	EASTING	NORTHING	ELEVATION (Metres)	
utility pole north of driveway	557966	4808079	317	
utility pole across from plaza entrance	557937	4808176	317	

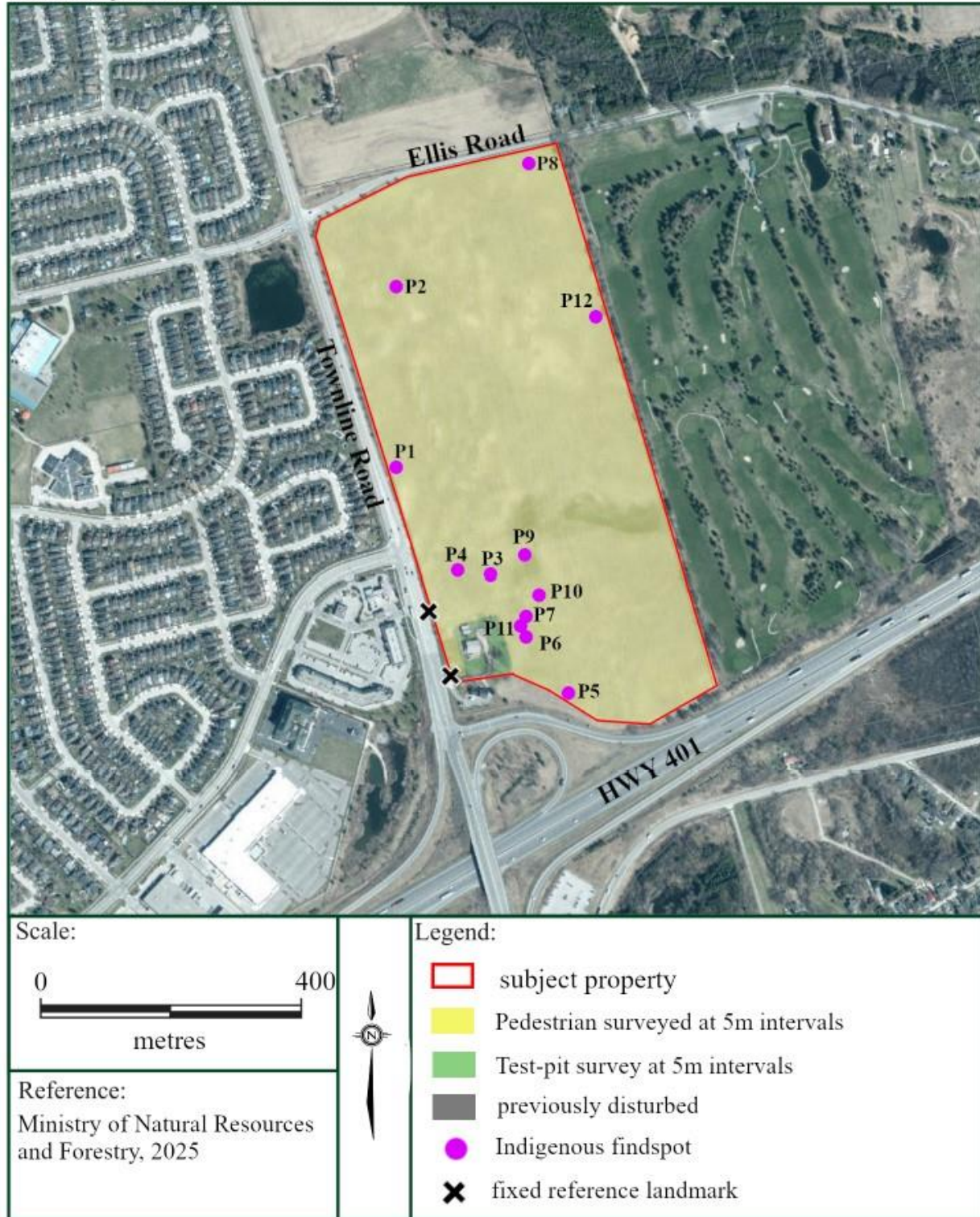


2.0 LOCATION MAPPING FOR SITES FOUND DURING STAGE 2 ASSESSMENT

The following figures show the location of sites Indigenous sites P1 – P12 and Euro-Canadian sites AiHb-389 and AiHb-390 with the fixed reference landmarks within the subject property.



SD 1: Aerial Photograph Showing the Results of the Stage 2 Archaeological Assessment with Indigenous Site Locations



SD 2: Aerial Photograph Showing the Results of the Stage 2 Archaeological Assessment with Euro-Canadian Site Locations



SD 3: Results of the Stage 2 Archaeological Assessment within Site AiHb-389 & AiHb-390

