

PLAN OF SURVEY OF
**PART OF LOT 1
 CONCESSION 2**
 IN THE
TOWNSHIP OF PUSLINCH
 COUNTY OF WELLINGTON
 SCALE 1 : 1000

THE INTENDED PLOT SIZE OF THIS PLAN IS 1219mm IN WIDTH BY 609mm IN HEIGHT WHEN PLOTTED AT A SCALE OF 1:1000
 J.D. BARNES LIMITED

METRIC DISTANCES AND/OR COORDINATES SHOWN ON THIS PLAN ARE IN METRES AND CAN BE CONVERTED TO FEET BY DIVIDING BY 0.3048.

INTEGRATION DATA

POINT ID	EASTING	NORTHING
ORP (A)	557 759.12	4 808 747.48
ORP (B)	557 988.87	4 808 028.45

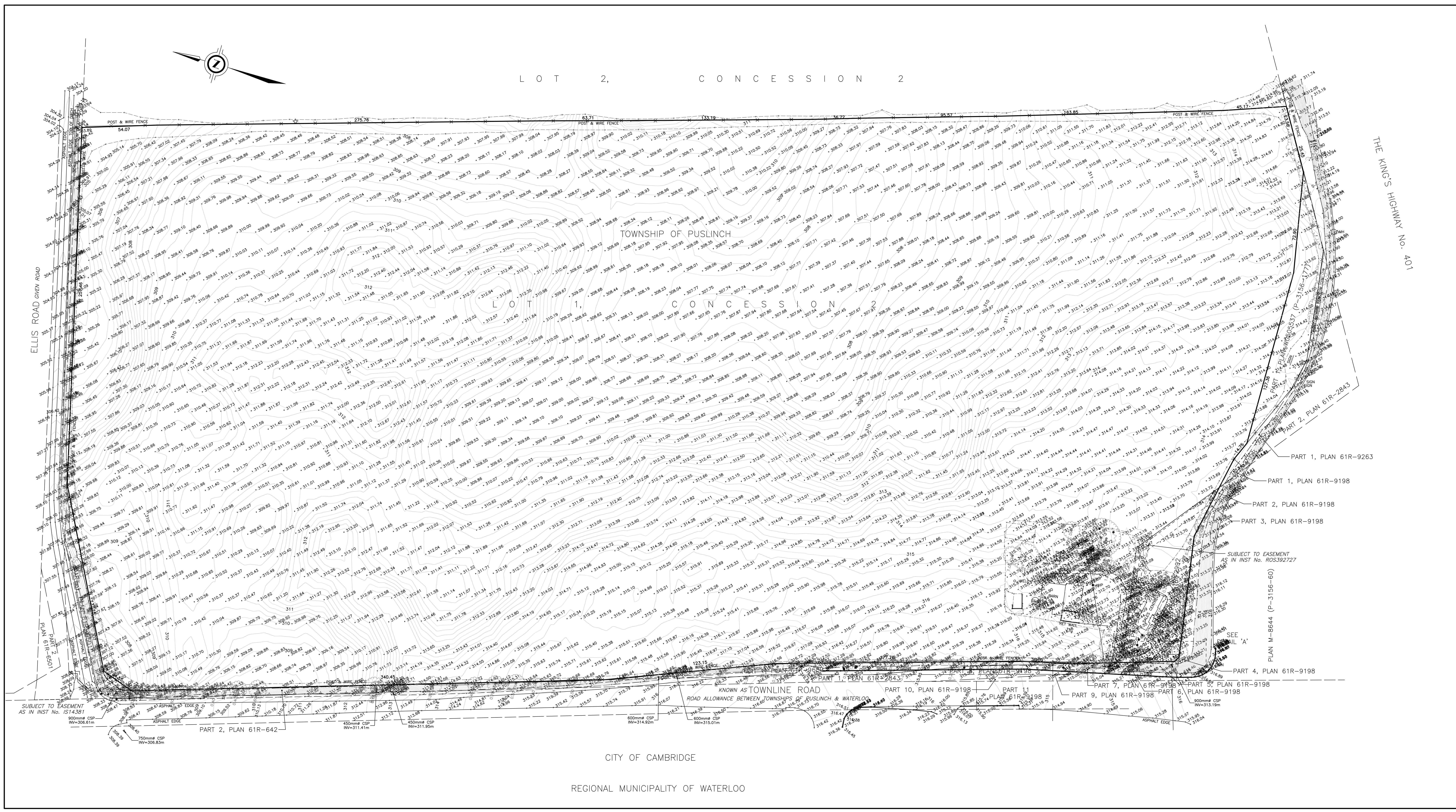
COORDINATES CANNOT, IN THEMSELVES, BE USED TO RE-ESTABLISH CORNERS OR BOUNDARIES SHOWN ON THIS PLAN.
 THE RESULTANT TIE BETWEEN ORP (A) AND ORP (B) IS 755.15 N17°43'15"W

NOTES
 BEARINGS ARE UTM GRID, DERIVED FROM OBSERVED REFERENCE POINTS A AND B, BY REAL TIME NETWORK (RTN) OBSERVATIONS, UTM ZONE 17, NAD83 (CSRS) (2010.0).
 DISTANCES ARE GROUND AND CAN BE CONVERTED TO GRID BY MULTIPLYING BY THE COMBINED SCALE FACTOR OF 0.999998.
 FOR BEARING COMPARISONS, A ROTATION OF 1°00'40" COUNTER-CLOCKWISE WAS APPLIED TO P1, P2, P3 & P4 TO CONVERT TO UTM GRID BEARINGS.
 FOR BEARING COMPARISONS, A ROTATION OF 0°01'20" COUNTER-CLOCKWISE WAS APPLIED TO P6 TO CONVERT TO GRID BEARINGS.
 FOR BEARING COMPARISONS, A ROTATION OF 0°27'10" COUNTER-CLOCKWISE WAS APPLIED TO P7 TO CONVERT TO GRID BEARINGS.

ELEVATION NOTES
 ELEVATIONS HEREON ARE GEODETIC (CGVD28-1978) AND ARE DERIVED FROM GNSS OBSERVATIONS USING NATURAL RESOURCES CANADA'S GEOD MODEL HTV2.0
 INTERMEDIATE CONTOURS ARE AT 0.25m INTERVALS.

TOPOGRAPHIC LEGEND

• AP	• DENOTES ANCHOR POLE
• HP	• DENOTES HYDRO POLE
• LS	• DENOTES LIGHT STANDARD
• FP	• DENOTES FLAG POLE
• MB	• DENOTES MAIL BOX
○ MH	○ DENOTES MANHOLE
• ST	• DENOTES SEPTIC TANK
• SV	• DENOTES SPRINKLER VALVE
• PED	• DENOTES TELEPHONE PEDESTAL
• TL	• DENOTES TRAFFIC SIGNAL
• TSC	• DENOTES TRAFFIC SIGNAL CONTROL
• WELL	• DENOTES WELL
— E —	— DENOTES OVERHEAD HYDRO CABLE
— UT —	— DENOTES BURIED TELEPHONE CABLE
• (Tree Symbol)	• DENOTES DECIDUOUS TREE
• (Tree Symbol)	• DENOTES CONIFEROUS TREE



CITY OF CAMBRIDGE
 REGIONAL MUNICIPALITY OF WATERLOO

FIELD WORK WAS COMPLETED ON THE 14th DAY OF JULY, 2025.

J.D. BARNES SURVEYING MAPPING LIMITED
 LAND INFORMATION SPECIALISTS
 257 WOODLAWN ROAD WEST, UNIT 101, GUELPH, ON N1H 3J1
 T: (519) 822-4031 F: (519) 822-1220 www.jdbarnes.com

DRAWN BY: RPA	CHECKED BY: TJS	REFERENCE NO.: 25-14-291-00-B-topo
		DATED: JUL 15/2025

PLT DATE: 7/15/2025 3:18 PM