



JACKSON ARBORICULTURE INC.

CONSULTING AND GIS ANALYSIS

118 Pleasant Ridge Road, Brantford ON, N3R 0B8

905-512-6303, jeremy@jacksonarbor.ca

Tree Inventory and Preservation Plan Report

Subject Property:

2809 Townline Road
Puslinch, ON

Prepared For:

Fieldgate Properties Ltd.
5400 Yonge St, Suite 300
Toronto, ON M2N 5R5

Prepared By:

Jackson Arboriculture Inc.
118 Pleasant Ridge Road
Brantford, ON N3R 0B8

11 November 2025
Revised 6 February 2026

Jackson Arboriculture Inc. Project No. 603

1.0 Introduction

Jackson Arboriculture Inc. was retained by Fieldgate Properties Ltd. to complete a Tree Inventory and Preservation Plan report for a property situated at 2809 Townline Road in the Township of Puslinch, Ontario, hereby referred to as the subject property. It is understood that an application will be filed with the Township for the construction of a commercial/industrial development.

2.0 Methodology

At the onset of the project the scope of work was coordinated with the client and the consulting team. Prior to conducting a site visit, the topographic survey and current aerial photography were overlaid utilizing geographic information software for use on site during the completion of the tree inventory. The tree locations and the site plan were then overlaid and a tree preservation analysis was completed to determine the impacts to the trees included in the inventory.

2.1 Tree Inventory

Site visits were conducted on the 29th and 30th of September 2025 to complete the tree inventory. All trees 10 cm in diameter and larger situated on subject property, on neighbouring property within 6 m and within the road allowance were included in the inventory. A visual assessment was completed on each tree included in the inventory and the following information is provided in the tree inventory table (Table 1):

- **Tree #:** A number assigned to each tree corresponding to the tree inventory (Table 1) and the Tree Preservation Plan (Sheets 1-5).
- **Species:** Common and scientific (Latin) species names.
- **DBH:** The trunk diameter at breast height, measured in centimeters at 1.4 m from the ground.
- **Condition:** The health of the tree considering the trunk integrity, the crown structure and the crown vigour; each rated as good, fair or poor. The condition ratings are based on the signs, symptoms and defects exhibited by each tree, considering the surroundings in which it is growing.
- **Dripline:** The distance from the trunk to the tips of the branches.
- **mTPZ:** Minimum tree preservation zone distance as measured in meters from the base of the tree. This is the distance at which tree protection fence is to be installed (unless noted otherwise below).
- **Location:** The property where the tree is situated, based on the topographic survey and observations made on site.
- **Comments:** Any additional notes relevant to the tree's health or growing conditions.

The trees included in the inventory were identified with numbers 1-223 and were located using the topographic survey provided and a tablet computer with a GPS receiver.

2.2 Impact Assessment

A tree preservation analysis was completed on each tree included in the tree inventory considering the impacts from the proposed development and many other factors including, but not limited to, tree condition, species, DBH and the existing site conditions. The impacts from the proposed development will occur where tree roots conflict with construction machinery during pre-grading and construction.

During the tree preservation analysis the minimum Tree Preservation Zone (mTPZ) distance was utilized to determine the potential impacts to each tree included in the inventory. Where encroachment is required within the mTPZ, tree removal may be required.

The mTPZ distance is the minimum distance at which development can safely occur without considerably impacting a tree's root system. The mTPZ distance is based on the diameter of the tree and measured in meters from the base of the stem. Refer to Table 2 for the mTPZ distances based on trunk diameter.

Table 2. Minimum tree preservation zone distances.

DBH (cm)	Min. Tree Preservation Zone Distance (m)*
	Radius
< 10	1.8
11 – 40	2.4
41 – 50	3.0
51 – 60	3.6
61 – 70	4.2
71 – 80	4.8
81 – 90	5.4
91 – 100	6.0
101 – 110	6.6

*As measured from the outside of the tree trunk.

3.0 Existing Conditions

The subject property is currently occupied by an agricultural field, farmstead and sales centre. The property is bound by Ellis Road to the north, the Puslinch Golf Club to the east, Highway 401 to the south and Townline Road to the west.

4.0 Tree Inventory Results

The results of the tree inventory indicate that a total of 223 trees 10 cm in diameter or larger reside on subject property, on neighbouring property within 6 m and within the road allowance. The trees included in the inventory appear to be comprised of naturally occurring trees with some landscape plantings.

No rare, threatened or endangered tree species were documented in the tree inventory. Refer to Table 1 for the complete tree inventory and Sheets 2-5 for the tree locations.

5.0 Proposed Development

The proposed development includes the construction of 7 commercial/industrial buildings and associated asphalt parking. Access to the development is proposed from Townline Road.

6.0 Discussion

The following sections discuss the tree removal requirements, tree preservation opportunities and tree preservation recommendations.

6.1 Tree Removal

The results of the impact assessment indicate that the removal of 19 trees will be required to accommodate the proposed development.

Trees 44, 45 and 47 appear to reside within the Townline Road allowance. Permission from the appropriate Township department will be required prior to their removal.

6.2 Tree Preservation

The results of the impact assessment indicate that the preservation of 204 trees will be possible with the use of appropriate tree protection measures. Tree protection measures must be implemented prior to the commencement of construction (pre-grading).

Encroachment within the mTPZ of Tree 167 will be required to accommodate the proposed grading. Considering that grade is proposed to added to the area of encroachment, and considering the historical agricultural practices (plowing), it is anticipated that very few tree roots will be lost directly during construction.

6.3 Tree Protection Recommendations

The following recommendations are made in attempts to reduce the impacts to the trees identified for preservation:

- Tree protection fence must be installed at the mTPZ distance as outlined in this report and on Sheets 1-5, prior to the commencement of construction (pre-grading), unless noted otherwise in this report and on Sheets 1-5.
- Once tree protection fence has been installed it must not be moved, relocated or altered in any way (unless repairing fallen fence etc.) for the duration of the construction period.
- No intrusion into an area identified on Sheets 2-5 as a tree preservation zone (TPZ) is allowed at anytime during construction, unless noted otherwise in this report and on Sheets 2-5.
- No storage of machinery, construction debris, materials, waste or any other items is allowed within a TPZ.
- Any tree branches or roots that conflict with proposed development must be pruned by a Certified Arborist in accordance with good arboricultural practice.
- Tree protection fencing should be inspected by a Certified Arborist prior to and during construction to ensure that the fencing remains intact and in good repair throughout the stages of development.

7.0 Summary

Jackson Arboriculture Inc. was retained by Fieldgate Properties Ltd. to complete a Tree Inventory and Preservation Plan report for a property situated at 2809 Townline Road in the Township of Puslinch, Ontario. A tree inventory was conducted and an impact assessment was completed in the context of the proposed development plan.

The tree inventory documented a total of 223 trees situated on subject property, in the road allowance and on neighbouring property within 6 m. The results of the impact assessment indicate that the removal of 19 trees will be required to accommodate the proposed development.

Respectfully submitted,
Jackson Arboriculture Inc.

Jeremy Jackson

Jeremy Jackson, H.B.Sc.,
ISA Certified Arborist #ON-1089A
GIS Analyst

8.0 Limitations of Assessment

It is our policy to attach the following limitations of assessment to ensure that the client, municipalities and agencies are fully aware of what is technically and professionally realistic when visually assessing and retaining trees.

The assessment of the trees presented in this report has been made using accepted arboricultural techniques. These include a visual examination of the above ground parts of each tree for structural defects, scars, external indications of decay such as fungal fruiting bodies, evidence of attack by insects, discoloured foliage, the condition of any visible root structures, the degree and direction of any lean, the general condition of the trees and the surrounding site, and the proximity of property and people.

Notwithstanding the recommendations and conclusions made in this report, it must be realized that trees are living organisms and their health and vigour constantly change. They are not immune to changes in site conditions, or seasonal variations in the weather conditions, including severe storms with high-speed winds.

While reasonable efforts have been made to ensure that the trees recommended for retention are healthy no guarantees are offered, or implied, that these trees, or any parts of them, will remain standing. It is both professionally and practically impossible to predict with absolute certainty the behaviour of any single tree or group of trees or their component parts in all circumstances. Inevitably a standing tree will always pose some risk. Most trees have the potential for failure under adverse weather conditions, and the risk can only be eliminated if the tree is removed.

Although every effort has been made to ensure that this assessment is reasonably accurate, trees should be re-assessed periodically. The assessment presented in this report is valid at the time of the inspection.

Table 1. Tree Inventory

Location: 2809 Townline Rd, Puslinch

Date: 29, 30 Sep. 2025 Surveyors: JJJ

Tree #	Common Name	Scientific Name	DBH	TI	CS	CV	DL	mTPZ	Location	Comments	Action
1	Black Walnut	<i>Juglans nigra</i>	16, 15	FG	G	G	3	2.4	Subject Property	Union at ground with included bark	Preserve
2	Black Walnut	<i>Juglans nigra</i>	22	G	G	G	3	2.4	HWY 401 Corridor		Preserve
3	Norway Maple	<i>Acer platanoides</i>	45	G	FG	G	4	3.0	HWY 401 Corridor	Light pruning wound	Preserve
4	Black Walnut	<i>Juglans nigra</i>	18	G	G	G	3	2.4	Subject Property		Preserve
5	Black Walnut	<i>Juglans nigra</i>	10, 9, 9	FG	G	G	3	2.4	HWY 401 Corridor	Unions at ground and 0.9 m	Preserve
6	Black Walnut	<i>Juglans nigra</i>	10, 10, 10, 9	F	FG	G	3	2.4	Subject Property	Union at ground	Preserve
7	Austrian Pine	<i>Pinus nigra</i>	51	FG	FG	G	4	3.6	Subject Property	Stem wounds, vertical scaffold limbs, diameter measured at 0.5 m due to branch attachments	Preserve
8	Black Walnut	<i>Juglans nigra</i>	16, 16	FG	G	G	3	2.4	Subject Property	Union at ground	Preserve
9	Black Walnut	<i>Juglans nigra</i>	29	G	G	G	4	2.4	HWY 401 Corridor		Preserve
10	Black Walnut	<i>Juglans nigra</i>	38	FG	G	G	5	2.4	Subject Property	Union at 1.5 m, diameter measured 1 m due to union	Preserve
11	Black Walnut	<i>Juglans nigra</i>	33	G	G	G	5	2.4	HWY 401 Corridor		Preserve
12	Manitoba Maple	<i>Acer negundo</i>	19, 18, 13, 13, 12, 11, 10	F	FG	G	4	2.4	HWY 401 Corridor		Preserve
13	White Mulberry	<i>Morus alba</i>	36, 23	FG	G	G	4	3.0	HWY 401 Corridor	Union at 1 m	Preserve
14	Black Walnut	<i>Juglans nigra</i>	11	G	FG	G	2	2.4	Town Puslinch ROW	Crown bowed west - understorey	Preserve
15	Black Walnut	<i>Juglans nigra</i>	24, 16, 11	F	FG	G	5	2.4	Subject Property	Union at 0.2 m	Preserve
16	Black Walnut	<i>Juglans nigra</i>	28, 21	FG	G	G	5	2.4	Subject Property	Unions at 0.6 and 1.4 m	Preserve
17	Norway Maple	<i>Acer platanoides</i>	39	G	G	G	4	2.4	Subject Property		Preserve
18	Black Walnut	<i>Juglans nigra</i>	56	G	G	G	8	3.6	Subject Property		Preserve
19	Black Walnut	<i>Juglans nigra</i>	61	G	G	G	10	4.2	Subject Property		Preserve
20	Sugar Maple	<i>Acer saccharum</i>	84	FG	FG	FG	10	5.4	Subject Property	Stem wound with cavities with heart rot in crown, 10% crown dieback	Preserve
21	Sugar Maple	<i>Acer saccharum</i>	93	F	FG	G	9	6.0	Subject Property	Union at 2 m with crack and cavity	Preserve
22	Black Walnut	<i>Juglans nigra</i>	54	FG	G	G	8	3.6	Subject Property	Light stem wounds, growth deficit	Remove
23	Sugar Maple	<i>Acer saccharum</i>	65	G	F	F	9	4.2	Subject Property	20% crown dieback	Preserve
24	Norway Spruce	<i>Picea abies</i>	79	G	F	F	4	4.8	Subject Property	20% crown dieback, stem wounds	Preserve
25	Horsechestnut	<i>Aesculus hippocastanum</i>	51	G	G	G	5	3.6	Subject Property	Crown bowed south	Remove
26	Sugar Maple	<i>Acer saccharum</i>	89	PF	FG	FG	10	5.4	Subject Property	Heavy stem wounds at 2 m, 10% crown dieback	Remove
27	Norway Spruce	<i>Picea abies</i>	48	FG	G	G	5	3.0	Subject Property	Stem wound	Remove

Tree #	Common Name	Scientific Name	DBH	TI	CS	CV	DL	mTPZ	Location	Comments	Action
28	Black Walnut	<i>Juglans nigra</i>	104	G	G	G	14	6.6	Subject Property	Remnants of playhouse nailed to tree	Remove
29	White Mulberry	<i>Morus alba</i>	32, 29	F	FG	G	4	3.0	Subject Property	Union at ground	Remove
30	Sugar Maple	<i>Acer saccharum</i>	81	FG	FG	FG	8	5.4	Subject Property	Stem wound with heart rot, 10% crown dieback	Remove
31	Sugar Maple	<i>Acer saccharum</i>	88	PF	F	FG	7	5.4	Subject Property	Union at 2.5 m with cavity with heart rot	Remove
32	Freeman's Maple	<i>Acer x. freemanii</i>	43	G	G	G	7	3.0	Town Puslinch ROW		Preserve
33	Freeman's Maple	<i>Acer x. freemanii</i>	21, 19, 18, 17, 13, 13, 15	F	F	G	5	2.4	Town Puslinch ROW	Union at 0.4 m	Preserve
34	Freeman's Maple	<i>Acer x. freemanii</i>	25, 16	F	F	G	4	2.4	Town Puslinch ROW	Union at ground, heavy crook	Preserve
35	Freeman's Maple	<i>Acer x. freemanii</i>	9, 5, 6	F	F	FG	3	1.8	Town Puslinch ROW	Union at ground, poor form	Preserve
36	Honey Locust cultivar	<i>Gleditsia triacanthos</i> var. 'inermis'	20	G	F	G	3	2.4	Town Puslinch ROW	Pruning wounds - topped at 3 m	Preserve
37	Honey Locust cultivar	<i>Gleditsia triacanthos</i> var. 'inermis'	24	G	G	G	4	2.4	Town Puslinch ROW	Pruning wounds	Preserve
38	Honey Locust cultivar	<i>Gleditsia triacanthos</i> var. 'inermis'	28	F	F	FG	4	2.4	Town Puslinch ROW	Pruning wounds - top cut at 3 m	Preserve
39	Honey Locust cultivar	<i>Gleditsia triacanthos</i> var. 'inermis'	27	G	G	G	4	2.4	Town Puslinch ROW	Light pruning wounds	Preserve
40	Freeman's Maple	<i>Acer x. freemanii</i>	25	G	G	G	3	2.4	Town Puslinch ROW		Preserve
41	Norway Maple	<i>Acer platanoides</i>	28, 25, 10	F	FG	G	4	2.4	Town Puslinch ROW	Union at 0.5 m	Preserve
42	Norway Maple	<i>Acer platanoides</i>	25	G	G	G	3	2.4	Town Puslinch ROW		Preserve
43	Norway Maple	<i>Acer platanoides</i>	17, 20, 20, 16	FG	G	G	4	2.4	Town Puslinch ROW	Union at 0.5m	Preserve
44	Norway Maple	<i>Acer platanoides</i>	22, 16, 14	F	F	G	3	2.4	Town Puslinch ROW	Union at ground, 14 cm stem has canker wound	Remove
45	Norway Maple	<i>Acer platanoides</i>	33, 22, 16	FG	FG	G	4	2.4	Town Puslinch ROW	Unions at 0.5 and 1 m	Remove
46	Manitoba Maple	<i>Acer negundo</i>	14, 12, 11, 9, 9	F	F	FG	3	2.4	Subject Property	Union at ground, pruning wounds	Remove
47	Norway Maple	<i>Acer platanoides</i>	37, 22, 9, 8	F	FG	G	4	2.4	Town Puslinch ROW	Unions at 0.5 and 1 m	Remove
48	Norway Maple	<i>Acer platanoides</i>	32	G	G	G	4	2.4	Town Puslinch ROW		Preserve
49	Norway Maple	<i>Acer platanoides</i>	29, 23, 15	F	FG	G	4	2.4	Town Puslinch ROW	Unions at 0.5 and 1.3 m	Preserve
50	Norway Maple	<i>Acer platanoides</i>	21, 34, 15	F	FG	FG	4	2.4	Town Puslinch ROW	Union at 0.5 m	Preserve
51	Norway Maple	<i>Acer platanoides</i>	51	G	G	G	5	3.6	Town Puslinch ROW		Preserve
52	Norway Maple	<i>Acer platanoides</i>	41, 24, 30	F	F	FG	4	3.6	Town Puslinch ROW	Union at 0.5 m, girdling root	Preserve
53	Norway Maple	<i>Acer platanoides</i>	48, 19	FG	FG	G	5	3.0	Town Puslinch ROW	Union at ground	Preserve
54	Norway Maple	<i>Acer platanoides</i>	41	F	F	F	4	3.0	Town Puslinch ROW	Stem wound - used to be codominant and one stem has been removed	Preserve
55	Norway Maple	<i>Acer platanoides</i>	42, 24	FG	G	G	4	3.0	Town Puslinch ROW	Union at 1 m	Preserve
56	Norway Maple	<i>Acer platanoides</i>	28, 18, 9, 8	F	F	G	4	2.4	Town Puslinch ROW	Union at ground	Preserve
57	Norway Maple	<i>Acer platanoides</i>	34	G	G	G	4	2.4	Town Puslinch ROW		Preserve

Tree #	Common Name	Scientific Name	DBH	TI	CS	CV	DL	mTPZ	Location	Comments	Action
58	Manitoba Maple	<i>Acer negundo</i>	~31, 28, 27	F	FG	G	5	3.0	Subject Property	Unions at ground and 1 m	Preserve
59	Norway Maple	<i>Acer platanoides</i>	41	F	F	FG	4	3.0	Town Puslinch ROW	Union at 2 m with canker lesion, 10% crown dieback	Preserve
60	Norway Maple	<i>Acer platanoides</i>	43	FG	G	G	4	3.0	Town Puslinch ROW	Union at 2 m	Preserve
61	Norway Maple	<i>Acer platanoides</i>	44	G	G	G	5	3.0	Town Puslinch ROW		Preserve
62	Norway Maple	<i>Acer platanoides</i>	16, 15, 12	F	F	FG	3	2.4	Town Puslinch ROW	Union at ground with included bark	Preserve
63	Norway Maple	<i>Acer platanoides</i>	24, 20, 18, 21, 17, 16	F	F	FG	4	3.0	Town Puslinch ROW	Union at ground with included bark	Preserve
64	Norway Maple	<i>Acer platanoides</i>	31	FG	G	G	4	2.4	Town Puslinch ROW	Union at 1.6 m	Preserve
65	Manitoba Maple	<i>Acer negundo</i>	12, 11, 10, 10, 9, 9, 8	F	F	FG	3	2.4	Subject Property	Union at ground	Preserve
66	Norway Maple	<i>Acer platanoides</i>	25, 22, 22	F	FG	G	3	2.4	Town Puslinch ROW	Union at 0.3 m	Preserve
67	Norway Maple	<i>Acer platanoides</i>	31, 24, 18	F	FG	G	4	3.0	Town Puslinch ROW		Preserve
68	Sugar Maple	<i>Acer saccharum</i>	82	F	F	FG	8	5.4	Town Puslinch ROW	Union at 3 m with cavity with heart rot	Preserve
69	Sugar Maple	<i>Acer saccharum</i>	61	F	F	FG	10	4.2	Town Puslinch ROW	Poor form	Preserve
70	Manitoba Maple	<i>Acer negundo</i>	24, 16, 10	P	F	F	4	2.4	Neighbouring	Union at ground with cavity and heart rot, lean east, epicormic branching	Preserve
71	Manitoba Maple	<i>Acer negundo</i>	67	PF	F	F	8	4.2	Subject Property	Lean west	Preserve
72	Manitoba Maple	<i>Acer negundo</i>	16	F	F	F	3	2.4	Subject Property	se at flare w hr, 20% crown dieback	Preserve
73	Manitoba Maple	<i>Acer negundo</i>	68, 44	F	F	F	8	4.8	Subject Property	Union at 1 m, broken branches	Preserve
74	Manitoba Maple	<i>Acer negundo</i>	25	F	F	F	3	2.4	Subject Property	Stem wounds, lean south	Preserve
75	Manitoba Maple	<i>Acer negundo</i>	~31, 28, 20	F	F	F	3	3.0	Neighbouring	Union at ground, broken branches, grapevine competition	Preserve
76	Manitoba Maple	<i>Acer negundo</i>	39	F	F	FG	8	2.4	Subject Property	Bow/lean west, epicormic branching	Preserve
77	Manitoba Maple	<i>Acer negundo</i>	37	F	P	F	3	2.4	Subject Property	Main stem failed at 3 m, epicormic branching	Preserve
78	Manitoba Maple	<i>Acer negundo</i>	39	F	F	FG	6	2.4	Subject Property	Lean west	Preserve
79	Apple species	<i>Malus spp.</i>	33, 32, 38, 37	P	P	P	4	3.0	Neighbouring	Union at ground, 3 stems are dead	Preserve
80	Black Walnut	<i>Juglans nigra</i>	17	G	FG	G	3	2.4	Subject Property		Remove
81	Manitoba Maple	<i>Acer negundo</i>	53	F	PF	F	3	3.6	Subject Property	Light lean southwest, crown failed at 5m, epicormic branching	Preserve
82	Black Cherry	<i>Prunus serotina</i>	53	G	G	G	4	3.6	Neighbouring		Preserve
83	Manitoba Maple	<i>Acer negundo</i>	11, 9, 9, 8	F	FG	G	3	2.4	Subject Property	Union at ground	Remove
84	Eastern Cottonwood	<i>Populus deltoides</i>	84	FG	F	F	8	5.4	Neighbouring	Union at 2 m, 20% crown dieback	Preserve
85	Eastern Cottonwood	<i>Populus deltoides</i>	~51	G	F	F	5	3.6	Neighbouring	Light lean east, 20% crown dieback	Preserve
86	Manitoba Maple	<i>Acer negundo</i>	29	F	FG	FG	4	2.4	Boundary	Lean with, epicormic branching	Preserve
87	Basswood	<i>Tilia americana</i>	19	G	FG	G	4	2.4	Boundary	Understorey	Preserve
88	Basswood	<i>Tilia americana</i>	44, 21	F	FG	G	7	3.0	Boundary	Union at ground, boundary	Preserve

Tree #	Common Name	Scientific Name	DBH	TI	CS	CV	DL	mTPZ	Location	Comments	Action
89	Manitoba Maple	<i>Acer negundo</i>	20, 11, 20	PF	F	F	4	2.4	Subject Property	Union at ground with stem wound	Remove
90	Manitoba Maple	<i>Acer negundo</i>	11	F	F	F	3	2.4	Subject Property	Lean west	Remove
91	Basswood	<i>Tilia americana</i>	61	FG	FG	FG	7	4.2	Subject Property	Stem wounds in crown	Preserve
92	Basswood	<i>Tilia americana</i>	54, 61	F	F	G	5	4.2	Subject Property	61 cm stem dead and failed	Preserve
93	Manitoba Maple	<i>Acer negundo</i>	52	F	FG	G	5	3.6	Subject Property	Lean stem wound	Remove
94	Manitoba Maple	<i>Acer negundo</i>	29	F	FG	G	5	2.4	Boundary	Lean southeast	Preserve
95	Basswood	<i>Tilia americana</i>	31	G	G	G	4	2.4	Subject Property		Preserve
96	Manitoba Maple	<i>Acer negundo</i>	32	FG	FG	FG	4	2.4	Subject Property	10% crown dieback	Preserve
97	Manitoba Maple	<i>Acer negundo</i>	65	F	F	FG	6	4.2	Subject Property	Lean west	Preserve
98	Basswood	<i>Tilia americana</i>	35, 28	F	FG	G	4	3.0	Subject Property	Union at ground with included bark	Preserve
99	Basswood	<i>Tilia americana</i>	44	G	G	G	5	3.0	Subject Property		Preserve
100	Basswood	<i>Tilia americana</i>	46, 27	F	FG	G	5	3.0	Subject Property	Union at ground with included bark	Preserve
101	Basswood	<i>Tilia americana</i>	31, 35	F	FG	G	6	3.0	Boundary	Union at ground	Preserve
102	Black Cherry	<i>Prunus serotina</i>	35, 41	F	FG	G	5	3.6	Boundary	Union at 1 m, stem wound, grapevine competition	Preserve
103	Black Cherry	<i>Prunus serotina</i>	28, 28	F	FG	G	4	2.4	Boundary	Union at 0.8 m	Preserve
104	Eastern White Cedar	<i>Thuja occidentalis</i>	21, 20, 18, 10, 10	F	F	G	3	2.4	Neighbouring	Union at ground	Preserve
105	Manitoba Maple	<i>Acer negundo</i>	~41, 28	P	PF	PF	5	3.0	Subject Property	Stems failed and lying on the ground	Preserve
106	Manitoba Maple	<i>Acer negundo</i>	61	F	F	G	5	4.2	Subject Property	Union at 2 m with broken branches, stem wound at flare from failed stem	Preserve
107	Manitoba Maple	<i>Acer negundo</i>	56, 53	F	FG	G	8	4.2	Subject Property	Union at 0.6 m, lean northwest	Preserve
108	Manitoba Maple	<i>Acer negundo</i>	51, 36	F	FG	G	8	4.2	Subject Property	Union at 0.4 m, lean southwest	Preserve
109	Manitoba Maple	<i>Acer negundo</i>	42	FG	FG	G	5	3.0	Subject Property	Lean north	Preserve
110	Manitoba Maple	<i>Acer negundo</i>	25, 18, 19, 13, 16	PF	F	F	5	2.4	Subject Property	Union at ground with included bark, lean southwest	Preserve
111	Manitoba Maple	<i>Acer negundo</i>	24	G	G	G	3	2.4	Subject Property		Preserve
112	Manitoba Maple	<i>Acer negundo</i>	10, 9, 8, 8	F	FG	G	3	2.4	Subject Property	Union at ground	Remove
113	Manitoba Maple	<i>Acer negundo</i>	13, 10, 10, 10, 9, 8	F	F	FG	4	2.4	Subject Property	Unions at ground	Preserve
114	Manitoba Maple	<i>Acer negundo</i>	10, 9, 8	F	F	G	3	2.4	Subject Property	Union at ground with rotting stump	Preserve
115	Manitoba Maple	<i>Acer negundo</i>	~75	P	PF	F	4	4.8	Subject Property	Main stem removed at 1.6 m, 18 and 16 cm stems form crown above 1.5 m dbh	Preserve
116	Manitoba Maple	<i>Acer negundo</i>	86	P	PF	PF	4	5.4	Subject Property	Main stem failed at 4 m	Preserve
117	Manitoba Maple	<i>Acer negundo</i>	11	F	FG	G	2	2.4	Subject Property	Lean west	Remove
118	Manitoba Maple	<i>Acer negundo</i>	54	FG	FG	G	7	3.6	Subject Property	Lean west	Preserve

Tree #	Common Name	Scientific Name	DBH	TI	CS	CV	DL	mTPZ	Location	Comments	Action
119	Manitoba Maple	<i>Acer negundo</i>	65, 24, 22, 25	F	F	FG	9	4.8	Subject Property	Unions at ground, natural branch wound with heart rot and fruiting bodies	Preserve
120	Manitoba Maple	<i>Acer negundo</i>	65	F	F	FG	10	4.2	Subject Property	Stem wound at flare from failed stems, lean southwest	Preserve
121	Ironwood	<i>Ostrya virginiana</i>	18	G	G	G	3	2.4	Subject Property		Preserve
122	Apple species	<i>Malus spp.</i>	32, 27	F	P	P	3	3.0	Boundary	Union at 1.4 m, 70% crown dieback	Preserve
123	Green Ash	<i>Fraxinus pennsylvanica</i>	15	P	PF	PF	2	2.4	Subject Property	Peeling bark, epicormic branching, EAB infestation	Preserve
124	Manitoba Maple	<i>Acer negundo</i>	28, 16, 10, 10	P	PF	F	5	2.4	Subject Property	Heavy lean south - root plate failure	Preserve
125	Black Cherry	<i>Prunus serotina</i>	15	F	F	FG	3	2.4	Subject Property	Heavy lean/bow northwest	Preserve
126	Apple species	<i>Malus spp.</i>	29, 26, 19	F	F	FG	4	2.4	Boundary	Heavy lean/bow, unions at ground and 1 m, 30% crown dieback	Preserve
127	Black Cherry	<i>Prunus serotina</i>	21	F	F	FG	4	2.4	Subject Property	Lean west	Preserve
128	Black Cherry	<i>Prunus serotina</i>	26	G	G	G	4	2.4	Subject Property		Preserve
129	Manitoba Maple	<i>Acer negundo</i>	21, 14, 11, 8	F	FG	G	5	2.4	Subject Property	Union at ground	Preserve
130	Manitoba Maple	<i>Acer negundo</i>	12	F	FG	G	3	2.4	Subject Property	Lean west	Preserve
131	Manitoba Maple	<i>Acer negundo</i>	24	F	FG	G	3	2.4	Subject Property	Lean/bowed west	Preserve
132	Green Ash	<i>Fraxinus pennsylvanica</i>	14	P	P	P	1	2.4	Subject Property	Peeling bark, epicormic branching, EAB infestation	Preserve
133	Ironwood	<i>Ostrya virginiana</i>	13	G	F	G	4	2.4	Boundary	Poor form	Preserve
134	Green Ash	<i>Fraxinus pennsylvanica</i>	11	P	P	P	2	2.4	Subject Property	Peeling bark, epicormic branching, EAB infestation	Preserve
135	Ironwood	<i>Ostrya virginiana</i>	20, 16, 19	FG	F	G	4	2.4	Boundary	Union at 1 m	Preserve
136	Black Cherry	<i>Prunus serotina</i>	53	F	P	P	3	3.6	Boundary	Union at 3.5 m, stem wounds, 50% crown dieback	Preserve
137	Basswood	<i>Tilia americana</i>	20	G	G	G	3	2.4	Subject Property		Preserve
138	Green Ash	<i>Fraxinus pennsylvanica</i>	12, 9	F	FG	G	3	2.4	Subject Property	Union at 0.4 m	Preserve
139	Basswood	<i>Tilia americana</i>	36, 22	F	F	F	5	3.0	Boundary	Union at ground, lean east, broken branches, snag resting in crown	Preserve
140	Manitoba Maple	<i>Acer negundo</i>	43, 32, 32	P	PF	PF	8	3.6	Subject Property	Root plate failure	Preserve
141	Basswood	<i>Tilia americana</i>	44, 39	F	FG	G	5	3.6	Boundary	Union at ground, bowed east	Preserve
142	Basswood	<i>Tilia americana</i>	51, 26, 21, 20, 17	F	FG	G	6	4.2	Subject Property		Preserve
143	Basswood	<i>Tilia americana</i>	48, 23	FG	G	G	6	3.0	Subject Property	Union at ground	Preserve
144	Sugar Maple	<i>Acer saccharum</i>	27	G	G	G	4	2.4	Subject Property		Preserve
145	Green Ash	<i>Fraxinus pennsylvanica</i>	15, 13	P	P	P	3	2.4	Neighbouring	Union at ground, peeling bark, epicormic branching, EAB infestation	Preserve
146	Basswood	<i>Tilia americana</i>	23, 11	F	FG	G	3	2.4	Boundary	Union at ground	Preserve

Tree #	Common Name	Scientific Name	DBH	TI	CS	CV	DL	mTPZ	Location	Comments	Action
147	Manitoba Maple	<i>Acer negundo</i>	13	FG	FG	G	2	2.4	Subject Property	Lean west	Preserve
148	Basswood	<i>Tilia americana</i>	46, 26, 31	F	FG	G	8	3.6	Subject Property	Union at ground with included bark	Preserve
149	Basswood	<i>Tilia americana</i>	31, 32, 12	F	FG	G	5	3.0	Boundary		Preserve
150	Sugar Maple	<i>Acer saccharum</i>	84, 58	F	FG	G	8	6.0	Subject Property	Union at ground with included bark, possibly cobra cable if preserve	Preserve
151	Black Cherry	<i>Prunus serotina</i>	91	FG	FG	G	8	6.0	Boundary	Stem wounds with hear rot	Preserve
152	Ironwood	<i>Ostrya virginiana</i>	51	G	FG	G	7	3.6	Subject Property	Main stem missing in top of crown	Preserve
153	Basswood	<i>Tilia americana</i>	44, 38, 22, 24, 32	F	F	FG	5	3.6	Subject Property	Union at ground	Preserve
154	Sugar Maple	<i>Acer saccharum</i>	119, 35, 22	F	G	G	9	7.8	Boundary	Union at ground, canker lesion on east side of stem	Preserve
155	Hawthorn Species	<i>Crataegus spp.</i>	14, 14	FG	FG	FG	3	2.4	Subject Property	Union at ground, crown bowed east	Preserve
156	Black Cherry	<i>Prunus serotina</i>	36, 32	F	FG	G	8	3.0	Subject Property	Union at 0.5 m with included bark	Preserve
157	Eastern Cottonwood	<i>Populus deltoides</i>	64, 14	F	P	P	8	4.2	Subject Property	Union at ground, 50% crown dieback	Preserve
158	European Ash	<i>Fraxinus excelsior</i>	22	PF	PF	PF	3	2.4	Neighbouring	Peeling bark, epicormic branching, EAB infestation	Preserve
159	Black Walnut	<i>Juglans nigra</i>	52	G	G	G	6	3.6	Neighbouring		Preserve
160	Juniper species	<i>Juniperus spp.</i>	17, 16, 14, 15	FG	FG	G	4	2.4	Neighbouring	Unions at 0.3 and 0.6 m	Preserve
161	Juniper species	<i>Juniperus spp.</i>	21, 17, 23	F	F	FG	4	2.4	Neighbouring	Unions at 0.3 and 0.6 m	Preserve
162	Juniper species	<i>Juniperus spp.</i>	27	FG	F	FG	3	2.4	Neighbouring		Preserve
163	Juniper species	<i>Juniperus spp.</i>	~25, 25, 20	FG	F	FG	3	2.4	Neighbouring	Union at 0.9 m	Preserve
164	Red Oak	<i>Quercus rubra</i>	46	G	G	G	8	3.0	Neighbouring		Preserve
165	Black Cherry	<i>Prunus serotina</i>	30	G	G	G	4	2.4	Boundary	Grapevine competition	Preserve
166	Black Cherry	<i>Prunus serotina</i>	61	FG	FG	G	8	4.2	Boundary	Union at 1.4 m, diameter measured at 0.5m due to union	Preserve
167	Sugar Maple	<i>Acer saccharum</i>	126	F	FG	G	8	7.8	Subject Property	Union at ground with seam/growth deficit	Preserve
168	Black Cherry	<i>Prunus serotina</i>	61	G	G	G	6	4.2	Boundary		Preserve
169	Black Cherry	<i>Prunus serotina</i>	61	G	G	G	7	4.2	Subject Property	Union at 1.7	Preserve
170	Apple species	<i>Malus spp.</i>	56	FG	FG	FG	4	3.6	Boundary		Preserve
171	Apple species	<i>Malus spp.</i>	18, 17, 12, 10	FG	F	F	4	2.4	Neighbouring	Union at ground, crown bowed northeast	Preserve
172	Black Walnut	<i>Juglans nigra</i>	10	G	G	G	2	2.4	Subject Property		Preserve
173	Green Ash	<i>Fraxinus pennsylvanica</i>	25	F	F	F	3	2.4	Neighbouring	Peeling bark, epicormic branching, EAB infestation	Preserve
174	Black Cherry	<i>Prunus serotina</i>	30	G	G	G	4	2.4	Subject Property		Preserve
175	Black Walnut	<i>Juglans nigra</i>	57	G	G	G	7	3.6	Subject Property		Preserve
176	Black Walnut	<i>Juglans nigra</i>	57	G	G	G	6	3.6	Boundary		Preserve
177	Black Walnut	<i>Juglans nigra</i>	23	G	G	G	5	2.4	Subject Property		Preserve
178	Black Walnut	<i>Juglans nigra</i>	61	G	G	G	7	4.2	Subject Property		Preserve

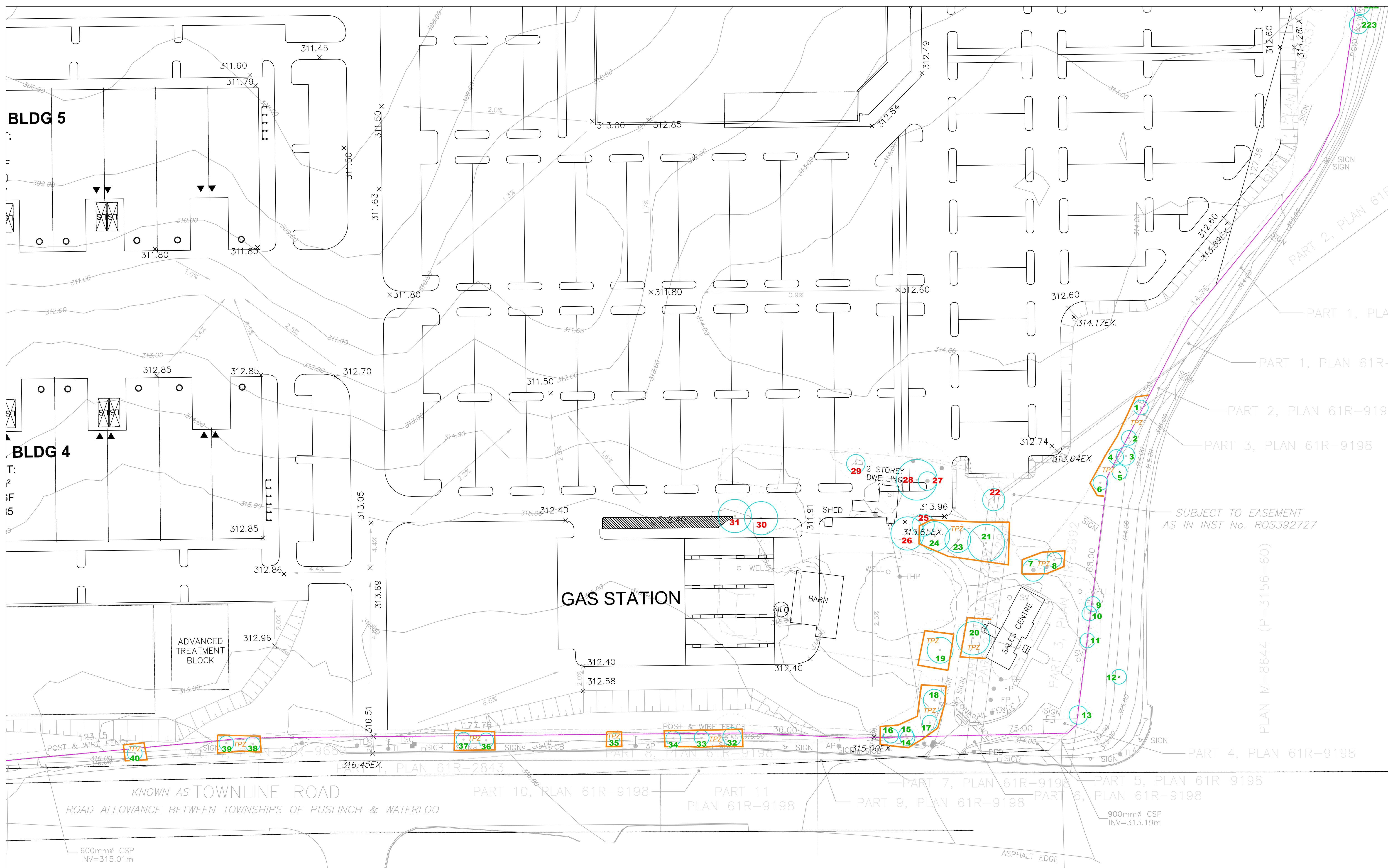
Tree #	Common Name	Scientific Name	DBH	TI	CS	CV	DL	mTPZ	Location	Comments	Action
179	Black Cherry	<i>Prunus serotina</i>	~31	FG	PF	PF	3	2.4	Neighbouring	Crook, 30% crown dieback	Preserve
180	Black Cherry	<i>Prunus serotina</i>	~22	G	F	F	2	2.4	Neighbouring	Epicormic branching, 20% crown dieback	Preserve
181	Apple species	<i>Malus spp.</i>	~28	FG	FG	FG	4	2.4	Neighbouring	Union at 1.4 m, grapevine competition	Preserve
182	Black Cherry	<i>Prunus serotina</i>	41	FG	PF	PF	2	3.0	Neighbouring	Stem wound at flare with dry rot, 30% crown dieback, epicormic branching	Preserve
183	Largetooth Aspen	<i>Populus grandidentata</i>	21	G	G	G	4	2.4	Subject Property		Preserve
184	Black Cherry	<i>Prunus serotina</i>	~35	G	G	G	4	2.4	Neighbouring		Preserve
185	Largetooth Aspen	<i>Populus grandidentata</i>	15	G	G	G	3	2.4	Boundary		Preserve
186	Largetooth Aspen	<i>Populus grandidentata</i>	15	G	G	G	3	2.4	Subject Property		Preserve
187	Black Cherry	<i>Prunus serotina</i>	47	FG	G	G	7	3.0	Boundary	Stem wound at flare with dry rot and frass	Preserve
188	Sugar Maple	<i>Acer saccharum</i>	45	G	G	G	6	3.0	Neighbouring		Preserve
189	Black Cherry	<i>Prunus serotina</i>	27	G	G	G	4	2.4	Neighbouring		Preserve
190	Black Cherry	<i>Prunus serotina</i>	32	F	FG	FG	5	2.4	Boundary	Lean, bowed southwest	Preserve
191	White Mulberry	<i>Morus alba</i>	~17	G	G	G	4	2.4	Neighbouring	Union at 2 m	Preserve
192	Black Walnut	<i>Juglans nigra</i>	~18	G	G	G	4	2.4	Neighbouring		Preserve
193	Trembling Aspen	<i>Populus tremuloides</i>	14	FG	F	FG	3	2.4	Boundary	Poor form	Preserve
194	Trembling Aspen	<i>Populus tremuloides</i>	~14	G	G	G	3	2.4	Neighbouring		Preserve
195	Black Walnut	<i>Juglans nigra</i>	~15, 18	FG	G	G	4	2.4	Neighbouring	Union at ground	Preserve
196	Manitoba Maple	<i>Acer negundo</i>	~13	G	FG	G	2	2.4	Neighbouring	Crown bowed east	Preserve
197	Green Ash	<i>Fraxinus pennsylvanica</i>	~13	F	F	F	2	2.4	Neighbouring	Peeling bark, epicormic branching, EAB infestation	Preserve
198	Black Walnut	<i>Juglans nigra</i>	~13	G	G	G	3	2.4	Neighbouring		Preserve
199	Norway Maple	<i>Acer platanoides</i>	33	G	G	G	5	2.4	HWY 401 Corridor		Preserve
200	Norway Maple	<i>Acer platanoides</i>	33	G	G	G	4	2.4	HWY 401 Corridor		Preserve
201	Norway Maple	<i>Acer platanoides</i>	54	G	G	G	5	3.6	HWY 401 Corridor		Preserve
202	Norway Maple	<i>Acer platanoides</i>	46	G	G	G	7	3.0	HWY 401 Corridor		Preserve
203	Norway Maple	<i>Acer platanoides</i>	54	G	G	G	6	3.6	HWY 401 Corridor		Preserve
204	Norway Spruce	<i>Picea abies</i>	25, 13	F	FG	FG	3	2.4	HWY 401 Corridor	Union at ground, 13 cm stem dead, grapevine competition	Preserve
205	Norway Spruce	<i>Picea abies</i>	35	G	G	G	4	2.4	HWY 401 Corridor		Preserve
206	Norway Spruce	<i>Picea abies</i>	25	G	G	FG	3	2.4	HWY 401 Corridor	Grapevine competition	Preserve
207	Austrian Pine	<i>Pinus nigra</i>	37	FG	FG	FG	4	2.4	HWY 401 Corridor	Union in crown	Preserve
208	Austrian Pine	<i>Pinus nigra</i>	41	F	F	F	4	3.0	HWY 401 Corridor	Union at 1.7 m	Preserve
209	Austrian Pine	<i>Pinus nigra</i>	32	G	G	G	4	2.4	HWY 401 Corridor		Preserve
210	Austrian Pine	<i>Pinus nigra</i>	41	G	G	G	5	3.0	HWY 401 Corridor		Preserve

Tree #	Common Name	Scientific Name	DBH	TI	CS	CV	DL	mTPZ	Location	Comments	Action
211	Norway Maple	<i>Acer platanoides</i>	46	G	G	G	4	3.0	HWY 401 Corridor		Preserve
212	Norway Maple	<i>Acer platanoides</i>	25	G	G	G	4	2.4	HWY 401 Corridor		Preserve
213	Norway Maple	<i>Acer platanoides</i>	15	G	G	G	3	2.4	HWY 401 Corridor		Preserve
214	Norway Maple	<i>Acer platanoides</i>	55	F	G	G	5	3.6	HWY 401 Corridor	Union at 2 m	Preserve
215	Norway Maple	<i>Acer platanoides</i>	12, 10	F	FG	G	2	2.4	HWY 401 Corridor	Union at 0.8 m, canker wound at flare	Preserve
216	Norway Maple	<i>Acer platanoides</i>	20, 19, 18	F	FG	G	3	2.4	HWY 401 Corridor	Unions at ground and 1.2 m	Preserve
217	Norway Maple	<i>Acer platanoides</i>	22, 22	P	PF	PF	3	2.4	HWY 401 Corridor	Union at ground, heavy broken branches, root plate failure	Preserve
218	Norway Maple	<i>Acer platanoides</i>	51	G	G	G	5	3.6	HWY 401 Corridor		Preserve
219	Norway Maple	<i>Acer platanoides</i>	31	G	G	G	4	2.4	HWY 401 Corridor		Preserve
220	Norway Maple	<i>Acer platanoides</i>	41	G	G	G	4	3.0	HWY 401 Corridor		Preserve
221	Norway Maple	<i>Acer platanoides</i>	37	FG	G	G	4	2.4	HWY 401 Corridor	Union at 1.5 m with included bark	Preserve
222	Norway Maple	<i>Acer platanoides</i>	45	FG	G	G	4	3.0	HWY 401 Corridor	Union at 2 m	Preserve
223	Norway Maple	<i>Acer platanoides</i>	45	G	G	G	4	3.0	HWY 401 Corridor	Union at 2.5 m	Preserve

Legend		
DBH	Diameter at Breast Height	(cm)
TI	Trunk Integrity	(G, F, P)
CS	Crown Structure	(G, F, P)
CV	Crown Vigor	(G, F, P)
DL	Dripline	(m)
mTPZ	Minimum Tree Preservation Zone	(m)
G	Good	
F	Fair	
P	Poor	
EAB	Emerald Ash Borer	
~	Estimate	

Table 1. Tree Inventory											
Location: 2809 Townline Rd, Puslinch Date: 29.30 Sep. 2025 Surveyors: JJJ											
Tree #	Common Name	Scientific Name	DBH	TI	CS	CV	DL	mTPZ	Location	Comments	Action
1	Black Walnut	Juglans nigra	16.15	FG	G	G	3	2.4	Subject Property	Union at ground with included bark	Preserve
2	Black Walnut	Juglans nigra	22	G	G	G	2.4	HWY 401 Corridor		Light pruning wound	Preserve
3	Norway Maple	Acer platanoides	45	G	FG	G	4	3.0	HWY 401 Corridor		Preserve
4	Black Walnut	Juglans nigra	16	G	G	G	2.4	Subject Property			Preserve
5	Black Walnut	Juglans nigra	10, 9, 9	FG	G	G	2.4	HWY 401 Corridor		Unions at ground and 0.9 m	Preserve
6	Black Walnut	Juglans nigra	10, 10, 9	F	FG	G	3	2.4	Subject Property		Preserve
7	Austrian Phe	Pinus nigra	51	FG	G	G	4	3.6	Subject Property	Stemwounds, vertical scaffold limbs, diameter measured at 0.5 m due to branch attachments	Preserve
8	Black Walnut	Juglans nigra	16, 16	FG	G	G	3	2.4	Subject Property	Union at ground	Preserve
9	Black Walnut	Juglans nigra	29	G	G	G	4	2.4	HWY 401 Corridor		Preserve
10	Black Walnut	Juglans nigra	36	FG	G	G	5	2.4	Subject Property	Union at 1.5 m, diameter measured 1 m due to union	Preserve
11	Black Walnut	Juglans nigra	33	G	G	G	5	2.4	HWY 401 Corridor		Preserve
12	Manitoba Maple	Acer negundo	19, 18, 13, 13, 12, 11, 10	F	FG	G	4	2.4	HWY 401 Corridor		Preserve
13	White Mulberry	Morus alba	36, 23	FG	G	G	3	3.0	HWY 401 Corridor	Union at 1 m	Preserve
14	Black Walnut	Juglans nigra	11	G	FG	G	2.4	2.4	Town Puslinch ROW	Crown bowed west - understory	Preserve
15	Black Walnut	Juglans nigra	24, 16, 11	F	FG	G	5	2.4	Subject Property	Union at 0.2 m	Preserve
16	Black Walnut	Juglans nigra	28, 21	FG	G	G	2.4	Subject Property	Remarks of 0.6 and 1.4 m	Preserve	
17	Norway Maple	Acer platanoides	39	G	G	G	4	2.4	Subject Property		Preserve
18	Black Walnut	Juglans nigra	56	G	G	G	3	3.6	Subject Property		Preserve
19	Black Walnut	Juglans nigra	61	G	G	G	10	4.2	Subject Property		Preserve
20	Sugar Maple	Acer saccharum	84	FG	FG	FG	10	5.4	Subject Property	Stemwound with cavities with heart rot in crown, 10% crown dieback	Preserve
21	Sugar Maple	Acer saccharum	93	F	FG	G	6	6.0	Subject Property	Union at 2 m with crack and cavity	Preserve
22	Black Walnut	Juglans nigra	54	FG	G	G	3	3.6	Subject Property	Light stemwounds, growth deficit	Remove
23	Sugar Maple	Acer saccharum	65	G	F	F	9	4.2	Subject Property	20% crown dieback	Remove
24	Norway Spruce	Picea abies	79	G	F	F	4	4.8	Subject Property	20% crown dieback, stemwounds	Remove
25	Horsechestnut	Aesculus hippocastanum	51	G	G	G	5	3.6	Subject Property	Crown bowed east	Preserve
26	Sugar Maple	Acer saccharum	89	FF	FG	FG	10	5.4	Subject Property	Heavy stemwounds at 2 m, 10% crown dieback	Remove
27	Norway Spruce	Picea abies	45	FG	G	G	5	3.0	Subject Property	Stemwound	Remove
28	Black Walnut	Juglans nigra	104	G	FG	G	14	6.6	Subject Property	Remnants of playhouse nailed to tree	Remove
29	White Mulberry	Morus alba	32, 29	F	FG	G	4	3.0	Subject Property	Union at ground	Remove
30	Sugar Maple	Acer saccharum	81	FG	FG	FG	8	5.4	Subject Property	Stemwound with heart rot, 10% crown dieback	Remove
31	Sugar Maple	Acer saccharum	88	FF	F	FG	7	5.4	Subject Property	Union at 2.5 m with cavity with heart rot	Remove
32	Freeman's Maple	Acer x. freemanii	43	G	G	G	7	3.0	Town Puslinch ROW		Preserve
33	Freeman's Maple	Acer x. freemanii	21, 19, 18, 17, 13, 13, 15	F	F	G	5	2.4	Town Puslinch ROW	Union at 0.4 m	Preserve
34	Freeman's Maple	Acer x. freemanii	25	F	G	G	4	2.4	Town Puslinch ROW	Union at ground, heavy crook	Preserve
35	Freeman's Maple	Acer x. freemanii	9, 5, 6	F	F	FG	3	1.8	Town Puslinch ROW	Union at ground, poor form	Preserve
36	Honey Locust cultivar	Gleditsia triacanthos var. 'Inermis'	20	G	F	G	3	2.4	Town Puslinch ROW	Pruning wounds - topped at 3 m	Preserve
37	Honey Locust cultivar	Gleditsia triacanthos var. 'Inermis'	24	G	G	G	4	2.4	Town Puslinch ROW	Pruning wounds	Preserve
38	Honey Locust cultivar	Gleditsia triacanthos var. 'Inermis'	28	F	F	FG	4	2.4	Town Puslinch ROW	Pruning wounds - top cut at 3 m	Preserve
39	Honey Locust cultivar	Gleditsia triacanthos var. 'Inermis'	27	G	G	G	4	2.4	Town Puslinch ROW	Light pruning wounds	Preserve
40	Freeman's Maple	Acer x. freemanii	25	G	G	G	3	2.4	Town Puslinch ROW		Preserve
41	Norway Maple	Acer platanoides	28, 25, 10	F	FG	G	4	2.4	Town Puslinch ROW	Union at 0.5 m	Preserve
42	Norway Maple	Acer platanoides	25	G	G	G	3	2.4	Town Puslinch ROW		Preserve
43	Norway Maple	Acer platanoides	17, 20, 20, 16	F	FG	G	4	2.4	Town Puslinch ROW	Union at 0.5 m	Preserve
44	Norway Maple	Acer platanoides	22, 16, 14	F	F	G	3	2.4	Town Puslinch ROW	Union at ground, 1.4 cm stem has canker wound	Remove
45	Norway Maple	Acer platanoides	33, 22, 16	FG	FG	G	4	2.4	Town Puslinch ROW	Unions at 0.5 and 1 m	Remove
46	Manitoba Maple	Acer negundo	14, 12, 11, 9, 9	F	F	FG	3	2.4	Subject Property	Union at ground, pruning wounds	Remove
47	Norway Maple	Acer platanoides	37, 22, 9, 8	F	FG	G	4	2.4	Town Puslinch ROW	Unions at 0.5 and 1 m	Remove
48	Norway Maple	Acer platanoides	32	G	G	G	4	2.4	Town Puslinch ROW		Remove
49	Norway Maple	Acer platanoides	29, 23, 15	F	FG	G	4	2.4	Town Puslinch ROW	Unions at 0.5 and 1.3 m	Preserve
50	Norway Maple	Acer platanoides	21, 34, 15	F	FG	G	4	2.4	Town Puslinch ROW	Unions at 0.5 m	Preserve
51	Norway Maple	Acer platanoides	51	G	G	G	5	3.6	Town Puslinch ROW		Preserve
52	Norway Maple	Acer platanoides	41, 24, 30	F	F	FG	4	3.6	Town Puslinch ROW	Union at 0.5 m, grinding root	Preserve
53	Norway Maple	Acer platanoides	48, 19	FG	FG	G	5	3.0	Town Puslinch ROW	Union at ground	Preserve
54	Norway Maple	Acer platanoides	41	F	F	G	4	3.0	Town Puslinch ROW	Stemwound - used to be codominant and one stem has been removed	Preserve
55	Norway Maple	Acer platanoides	42, 24	FG	G	G	4	3.0	Town Puslinch ROW	Union at ground	Preserve
56	Norway Maple	Acer platanoides	28, 18, 9, 8	F	F	G	4	2.4	Town Puslinch ROW	Union at ground	Preserve
57	Norway Maple	Acer platanoides	34	G	G	G	4	2.4	Town Puslinch ROW		Preserve
58	Manitoba Maple	Acer negundo	-31, 28, 27	F	F	FG	5	3.0	Subject Property	Unions at ground and 1 m	Preserve
59	Norway Maple	Acer platanoides	41	F	F	FG	4	3.0	Town Puslinch ROW	Union at 2 m with canker lesion, 10% crown dieback	Preserve
60	Norway Maple	Acer platanoides	43	FG	G	G	4	3.0	Town Puslinch ROW	Union at 2 m	Preserve
61	Norway Maple	Acer platanoides	44	G	G	G	5	3.0	Town Puslinch ROW		Preserve
62	Norway Maple	Acer platanoides	16, 15, 12	F	F	FG	3	2.4	Town Puslinch ROW	Union at ground with included bark	Preserve
63	Norway Maple	Acer platanoides	24, 20, 18, 21, 17, 18	F	FG	G	4	3.0	Town Puslinch ROW	Union at ground with included bark	Preserve
64	Norway Maple	Acer platanoides	31	FG	G	G	4	2.4	Town Puslinch ROW	Union at 1.6 m	Preserve
65	Manitoba Maple	Acer negundo	12, 11, 10, 10, 9, 8	F	F	FG	3	2.4	Subject Property	Union at ground	Preserve
66	Norway Maple	Acer platanoides	25, 22, 22	F	FG	G	3	2.4	Town Puslinch ROW	Union at 0.3 m	Preserve
67	Norway Maple	Acer platanoides	31, 24, 18	F	FG	G	4	3.0	Town Puslinch ROW		Preserve
68	Sugar Maple	Acer saccharum	62	F	F	FG	8	5.4	Town Puslinch ROW	Union at 3 m with cavity with heart rot	Preserve
69	Sugar Maple	Acer saccharum	61	F	F	FG	10	4.2	Town Puslinch ROW	Poor form	Preserve
70	Manitoba Maple	Acer negundo	24, 16, 10	P	F	F	4	2.4	Neighbouring	Union at ground with cavity and heart rot, lean east, epicormic branching	Preserve
71	Manitoba Maple	Acer negundo	67	FF	F	F	8	4.2	Subject Property	Lean west	Preserve
72	Manitoba Maple	Acer negundo	18	F	F	F	3	2.4	Subject Property	Lean west, 20% crown dieback	Preserve
73	Manitoba Maple	Acer negundo	68, 44	F	F	F	8	4.8	Subject Property	Union at 1 m broken branches	Preserve
74	Manitoba Maple	Acer negundo	25	F	F	F	3	2.4	Subject Property	Stemwounds, lean south	Preserve
75	Manitoba Maple	Acer negundo	-31, 28, 20	F	F	F	3	3.0	Neighbouring	Union at ground, broken branches, grapevine competition	Preserve
76	Manitoba Maple	Acer negundo	39	F	F	FG	8	2.4	Subject Property	Bow/lean west, epicormic branching	Preserve
77	Manitoba Maple	Acer negundo	37	F	F	F	3	2.4	Subject Property	Main stem failed at 3 m, epicormic branching	Preserve
78	Manitoba Maple	Acer negundo	39	F	F	FG	6	2.4	Subject Property	Lean west	Preserve
79	Apple species	Malus spp.	33, 32, 38, 37	P	P	P	4	3.0	Neighbouring	Union at ground, 3 stems are dead	Remove
80	Black Walnut	Juglans nigra	17	G	FG	G	3	2.4	Subject Property	Light lean southwest, crown failed at 5m, epicormic branching	Remove
81	Manitoba Maple	Acer negundo	53	F	FF	F	3	3.6	Subject Property		Preserve
82	Black Cherry	Prunus serotina	53	G	G	G	4	3.6	Neighbouring		Preserve
83	Manitoba Maple	Acer negundo	11, 9, 9, 8	F	FG	G	3	2.4	Subject Property	Union at ground	Remove
84	Eastern Cottonwood	Populus deltoides	84	FG	F	F	5	5.4	Neighbouring	Union at 2 m, 20% crown dieback	Preserve
85	Eastern Cottonwood	Populus deltoides	-51	G	F	F	5	3.6	Neighbouring	Light lean east, 20% crown dieback	Preserve
86	Manitoba Maple	Acer negundo	29	F	FG	G	4	2.4	Boundary	Lean west, epicormic branching	Preserve
87	Basswood	Tilia americana	19	G	FG	G	4	2.4	Boundary	Union at ground, boundary	Preserve
88	Basswood	Tilia americana	44, 21	F	FG	G	7	3.0	Boundary	Union at ground, boundary	Preserve
89	Manitoba Maple	Acer negundo	20, 11, 20	FF	F	F	4	2.4	Subject Property	Union at ground with stemwound	Remove
90	Manitoba Maple	Acer negundo	11	F	F	F	3	2.4	Subject Property	Lean west	Remove
91	Basswood	Tilia americana	61	FG	FG	FG	7	4.2	Subject Property	Stemwounds in crown	Preserve
92	Basswood	Tilia americana	54, 61	F	F	F	5	4.2	Subject Property	61 cm stem dead and failed	Preserve
93	Manitoba Maple	Acer negundo	52	F	FG	G	3	3.6	Subject Property	Lean stemwound	Remove
94	Manitoba Maple	Acer negundo	29	F	FG	G	5	2.4	Boundary	Lean southwest	Preserve
95	Basswood	Tilia americana	31	G	G	G	4	2.4	Boundary		Preserve
96	Manitoba Maple	Acer negundo	32	FG	FG	G	4	2.4	Subject Property	10% crown dieback	Preserve
97	Manitoba Maple	Acer negundo	65	F	F	FG	6	4.2	Subject Property	Lean west	Preserve
98	Basswood	Tilia americana	35, 28	F	FG	G	4	3.0	Subject Property	Union at ground with included bark	Preserve
99	Basswood	Tilia americana	44	G	G	G	5	3.0	Subject Property	Union at ground with included bark	Preserve
100	Basswood	Tilia americana	48, 27	F	FG	G	5	3.0	Subject Property	Union at ground with included bark	Preserve
101	Basswood	Tilia americana	31, 35	F	FG	G	6	3.0	Boundary	Union at ground	Preserve
102	Black Cherry	Prunus serotina	35, 41	F	FG	G	5	3.6	Boundary	Union at 1 m, stemwound, grapevine competition	Preserve
103	Black Cherry	Prunus serotina	28, 28	F	FG	G	4	2.4	Boundary	Union at 0.8 m	Preserve
104	Eastern White Cedar	Thuja occidentalis	21, 20, 18, 10, 10	P	P	F	3	2.4	Neighbouring	Union at ground	Preserve
105	Manitoba Maple	Acer negundo	-41, 28	P	FF	F	5	3.0	Subject Property	Stems failed and lying on the ground	Preserve
106	Manitoba Maple	Acer negundo	61	F	F	G	5	4.2	Subject Property	Union at 2 m with broken branches, stem wound at flare from failed stem	Preserve
107	Manitoba Maple	Acer negundo	56, 53	F	FG	G	8	4.2	Subject Property	Union at 0.6 m, lean northwest	Preserve
108	Manitoba Maple	Acer negundo	51, 36	F	FG	G	8	4.2	Subject Property	Union at 0.4 m, lean southwest	Preserve
109	Manitoba Maple	Acer negundo	42	FG	G	G	5	3.0	Subject Property	Lean north	Preserve
110	Manitoba Maple	Acer negundo	25, 18, 19, 13, 16	F	F	F	5	2.4	Subject Property	Union at ground with included bark, lean southwest	Preserve
111	Manitoba Maple	Acer negundo	24	G	G	G	3	2.4	Subject Property		Preserve
112	Manitoba Maple	Acer negundo	10, 9, 8, 8	F	FG	G	3	2.4	Subject Property	Union at ground	Remove

Tree #	Common Name	Scientific Name	DBH	TI	CS	CV	DL	mTPZ	Location	Comments	Action
113	Manitoba Maple	Acer negundo	13, 10, 10, 9, 9	F	F	FG	4	2.4	Subject Property	Unions at ground	Preserve
114	Manitoba Maple	Acer negundo	10, 9, 8	F	F	FG	3	2.4	Subject Property	Union at ground with rotting slump	Preserve
115	Manitoba Maple	Acer negundo	-75	P	FF	F	4	4.8	Subject Property	Main stem removed at 1.6 m, 18 and 16 cm stems form crown above 1.5 m dbh	Preserve
116	Manitoba Maple	Acer negundo	86	P	FF	FF	4	5.4	Subject Property	Main stem failed at 4 m	Preserve
117	Manitoba Maple	Acer negundo	11	F	FG	G	2	2.4	Subject Property	Lean west	Remove
118	Manitoba Maple	Acer negundo	54	FG	FG	G	7	3.6	Subject Property	Lean west	Preserve
119	Manitoba Maple	Acer negundo	65, 24, 22, 25	F	F	FG	9	4.8	Subject Property	Unions at ground, natural branch wound with heart rot and fruiting bodies	Preserve
120	Manitoba Maple	Acer negundo	65	F	F	FG	10	4.2	Subject Property	Stemwound at flare from failed stems, lean southwest	Preserve
121	Ironwood	Ostrya virginiana	18	G	G	G	3	2.4	Subject Property		Preserve
122	Apple species	Malus spp.	32, 27	F	P	P	3	3.0	Boundary	Union at 1.4 m, 70% crown dieback	Preserve
123	Green Ash	Fraxinus pennsylvanica	15	P	FF	FF	2	2.4	Subject Property	Peeling bark, epicormic branching, EAB infestation	Preserve
124	Manitoba Maple	Acer negundo	28, 16, 10, 10	P	FF	F	5	2.4	Subject Property	Heavy lean south - root plate failure	Preserve
125	Black Cherry	Prunus serotina	15	F	F	FG	3	2.4	Subject Property</		



LEGEND

- Surveyed Tree Location
- GPS Tree Location
- 10 Tree Number Identified for Preservation (GREEN)
- 15 Tree Number Identified for Removal (Red)
- TPZ Tree Preservation Zone Symbol
- Minimum Tree Protection Zone (mTPZ)
- Tree Protection Fence Location
- Property Boundary

Tree Protection Recommendations
 The following recommendations are made in attempts to reduce the impacts to trees identified for preservation:

- Tree protection fence must be installed at the mTPZ distance as outlined in this report and on Sheets 1-5, prior to the commencement of construction (pre-grading), unless noted otherwise in this report and on Sheets 1-5.
- Once tree protection fence has been installed it must not be moved, relocated or altered in any way (unless repairing fallen fence etc.) for the duration of the construction period.
- No intrusion into an area identified on Sheets 2-5 as a tree preservation zone (TPZ) is allowed at anytime during construction, unless noted otherwise in this report and on Sheets 2-5.
- No storage of machinery, construction debris, materials, waste or any other items is allowed within a TPZ.
- Any tree branches or roots that conflict with proposed development must be pruned by a Certified Arborist in accordance with good arboricultural practice.
- Tree protection fencing should be inspected by a Certified Arborist prior to and during construction to ensure that the fencing remains intact and in good repair throughout the stages of development.

SUBJECT TO EASEMENT AS IN INST No. ROS392727

No.	Description	Date	By
1	Revised for Submission	11 Nov. 2025	JJ
2	Revised for Submission	07 Feb. 2026	JJ

Data Source: J.D. Barnes Limited

2809 Townline Road
 Puslinch, ON

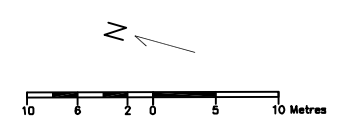
Fieldgate Properties Ltd.
 5400 Yonge St., Suite 300
 Toronto, ON

Tree Preservation Plan

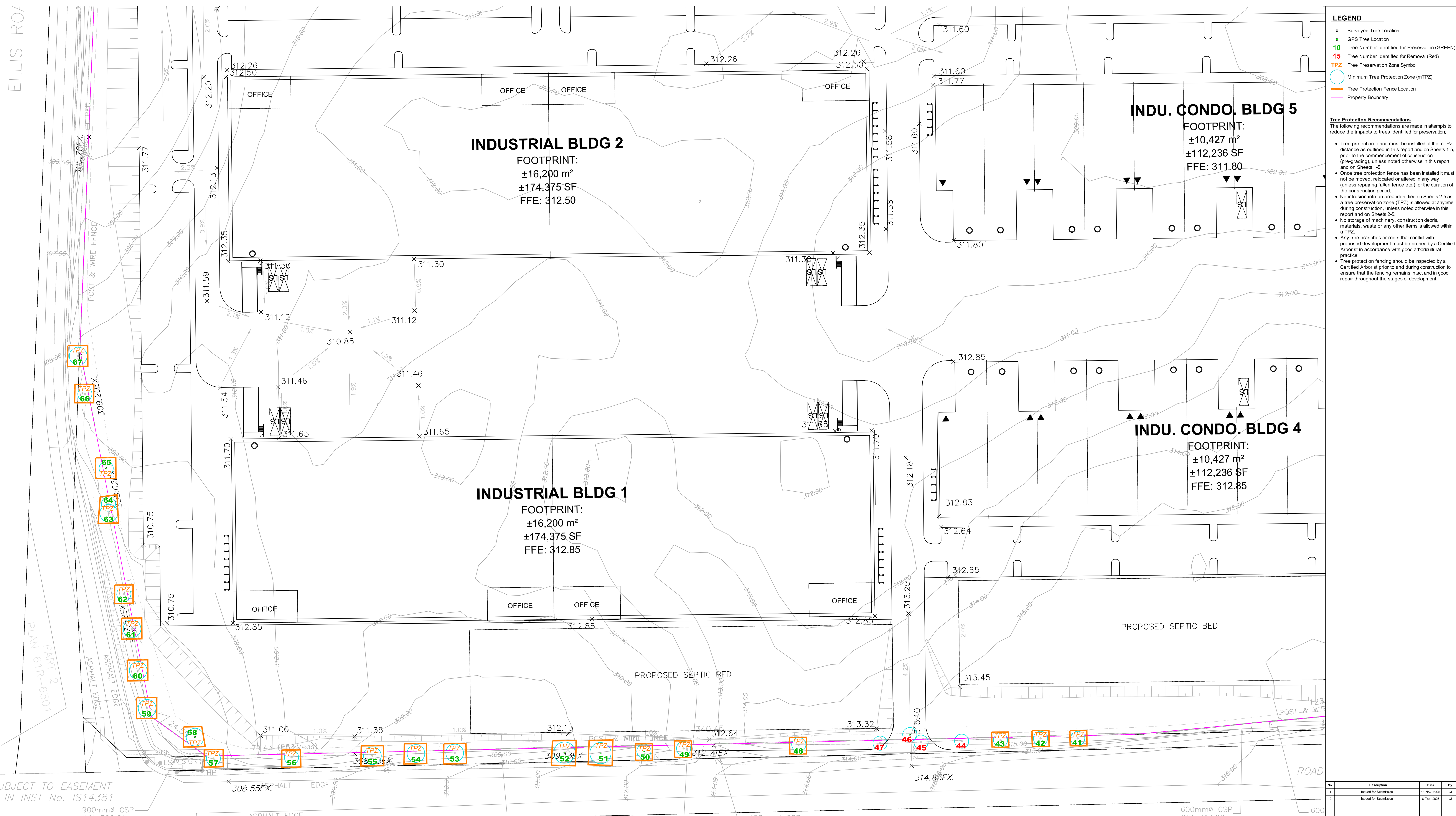
JACKSON ARBORICULTURE INC.
 CONSULTING AND ANALYSIS

111 Pleasant Ridge Road
 Woodstock, ON N4B 0R6
 Tel: 519-243-0101
 jackson@jacksonarb.com

Project # P603 Sheet # 2
 Date 11 November 2025 Revised 6 February 2026
 Scale 1:600 (@ 24x36)



BRIDGE
 QUALITY OF WATERLOO



LEGEND

- Surveyed Tree Location
- GPS Tree Location
- 10 Tree Number Identified for Preservation (GREEN)
- 15 Tree Number Identified for Removal (RED)
- TPZ Tree Preservation Zone Symbol
- Minimum Tree Protection Zone (mTPZ)
- Tree Protection Fence Location
- Property Boundary

Tree Protection Recommendations
 The following recommendations are made in attempts to reduce the impacts to trees identified for preservation:

- Tree protection fence must be installed at the mTPZ distance as outlined in this report and on Sheets 1-5, prior to the commencement of construction (pre-grading), unless noted otherwise in this report and on Sheets 1-5.
- Once tree protection fence has been installed it must not be moved, relocated or altered in any way (unless repairing fallen fence etc.) for the duration of the construction period.
- No intrusion into an area identified on Sheets 2-5 as a tree preservation zone (TPZ) is allowed at anytime during construction, unless noted otherwise in this report and on Sheets 2-5.
- No storage of machinery, construction debris, materials, waste or any other items is allowed within a TPZ.
- Any tree branches or roots that conflict with proposed development must be pruned by a Certified Arborist in accordance with good arboricultural practice.
- Tree protection fencing should be inspected by a Certified Arborist prior to and during construction to ensure that the fencing remains intact and in good repair throughout the stages of development.

SUBJECT TO EASEMENT
 IN INST No. IS14381

900mmØ CSP INV=306.61m ASPHALT EDGE 450mmØ CSP INV=311.41m 450mmØ CSP INV=311.95m 600mmØ CSP INV=314.92m 600mmØ CSP INV=314.92m

PART 2, PLAN 61R-6501 ASPHALT EDGE PART 2, PLAN 61R-642 ROAD

750mmØ CSP INV=306.83m ASPHALT EDGE 750mmØ CSP INV=306.83m 750mmØ CSP INV=306.83m 750mmØ CSP INV=306.83m 750mmØ CSP INV=306.83m

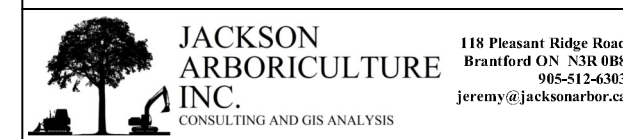
No.	Description	Date	By
1	Revised for Submission	11 Nov. 2025	JJ
2	Revised for Submission	07 Feb. 2026	JJ

Data Source: J.D. Barnes Limited

2809 Townline Road
 Puslinch, ON

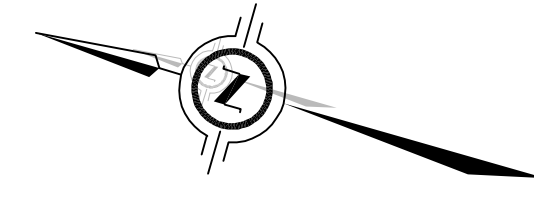
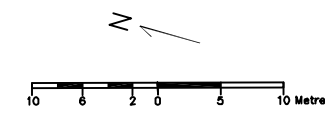
Fieldgate Properties Ltd.
 5400 Yonge St., Suite 300
 Toronto, ON

Tree Preservation Plan



Project #	P603	Sheet #	3
Date	11 November 2025		
Revised	6 February 2026		
Scale	1:600 (@ 24x36)		

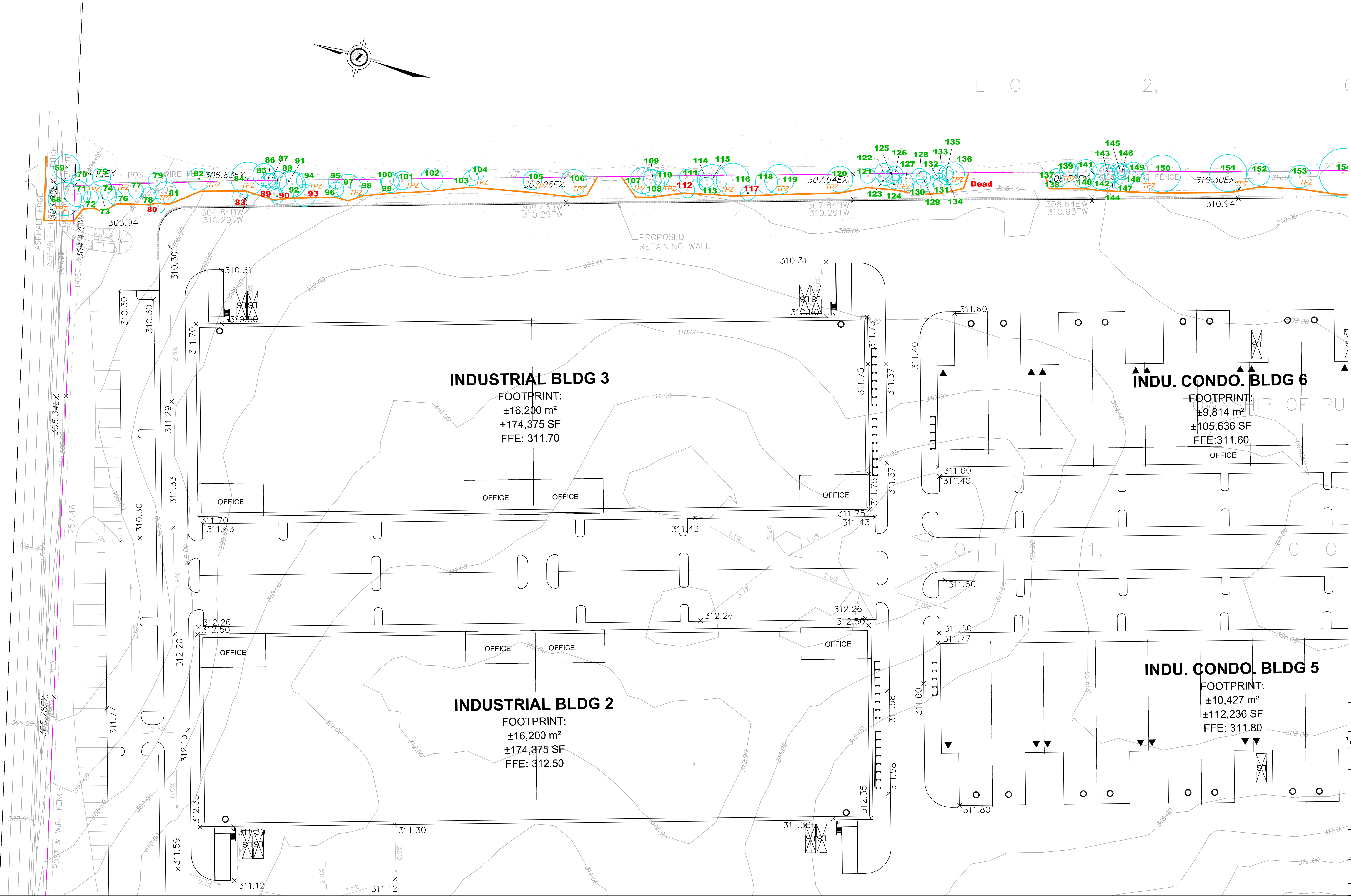
CITY OF CAMBRIDGE
 REGIONAL MUNICIPALITY OF



LOT 2,

LOT 1,

ELLIS ROAD GIVEN ROAD



INDUSTRIAL BLDG 3
 FOOTPRINT:
 ±16,200 m²
 ±174,375 SF
 FFE: 311.70

INDU. CONDO. BLDG 6
 FOOTPRINT:
 ±9,814 m²
 ±105,636 SF
 FFE: 311.60
 OFFICE

INDUSTRIAL BLDG 2
 FOOTPRINT:
 ±16,200 m²
 ±174,375 SF
 FFE: 312.50

INDU. CONDO. BLDG 5
 FOOTPRINT:
 ±10,427 m²
 ±112,236 SF
 FFE: 311.80

- LEGEND**
- Surveyed Tree Location
 - GPS Tree Location
 - 10 Tree Number Identified for Preservation (GREEN)
 - 15 Tree Number Identified for Removal (Red)
 - TPZ Tree Preservation Zone Symbol
 - Minimum Tree Protection Zone (mTPZ)
 - Tree Protection Fence Location
 - Property Boundary

Tree Protection Recommendations
 The following recommendations are made in attempts to reduce the impacts to trees identified for preservation:

- Tree protection fence must be installed at the mTPZ distance as outlined in this report and on Sheets 1-5, prior to the commencement of construction (pre-grading), unless noted otherwise in this report and on Sheets 1-5.
- Once tree protection fence has been installed it must not be moved, relocated or altered in any way (unless repairing fallen fence etc.) for the duration of the construction period.
- No intrusion into an area identified on Sheets 2.5 as a tree preservation zone (TPZ) is allowed at anytime during construction, unless noted otherwise in this report and on Sheets 2-5.
- No storage of machinery, construction debris, materials, waste or any other items is allowed within a TPZ.
- Any tree branches or roots that conflict with proposed development must be pruned by a Certified Arborist in accordance with good arboricultural practice.
- Tree protection fencing should be inspected by a Certified Arborist prior to and during construction to ensure that the fencing remains intact and in good repair throughout the stages of development.

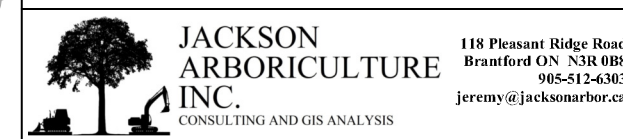
No.	Description	Date	By
1	Issued for Submission	11 Nov. 2025	JJ
2	Issued for Submission	9 Feb. 2026	JJ

Data Source: J.D. Barnes Limited

2809 Townline Road
Puslinch, ON

Fieldgate Properties Ltd.
5400 Yonge St., Suite 300
Toronto, ON

Tree Preservation Plan



Project #	P603	Sheet #	4
Date	11 November 2025	Revised	6 February 2026
Scale	1:600 (@ 24x36)		

