

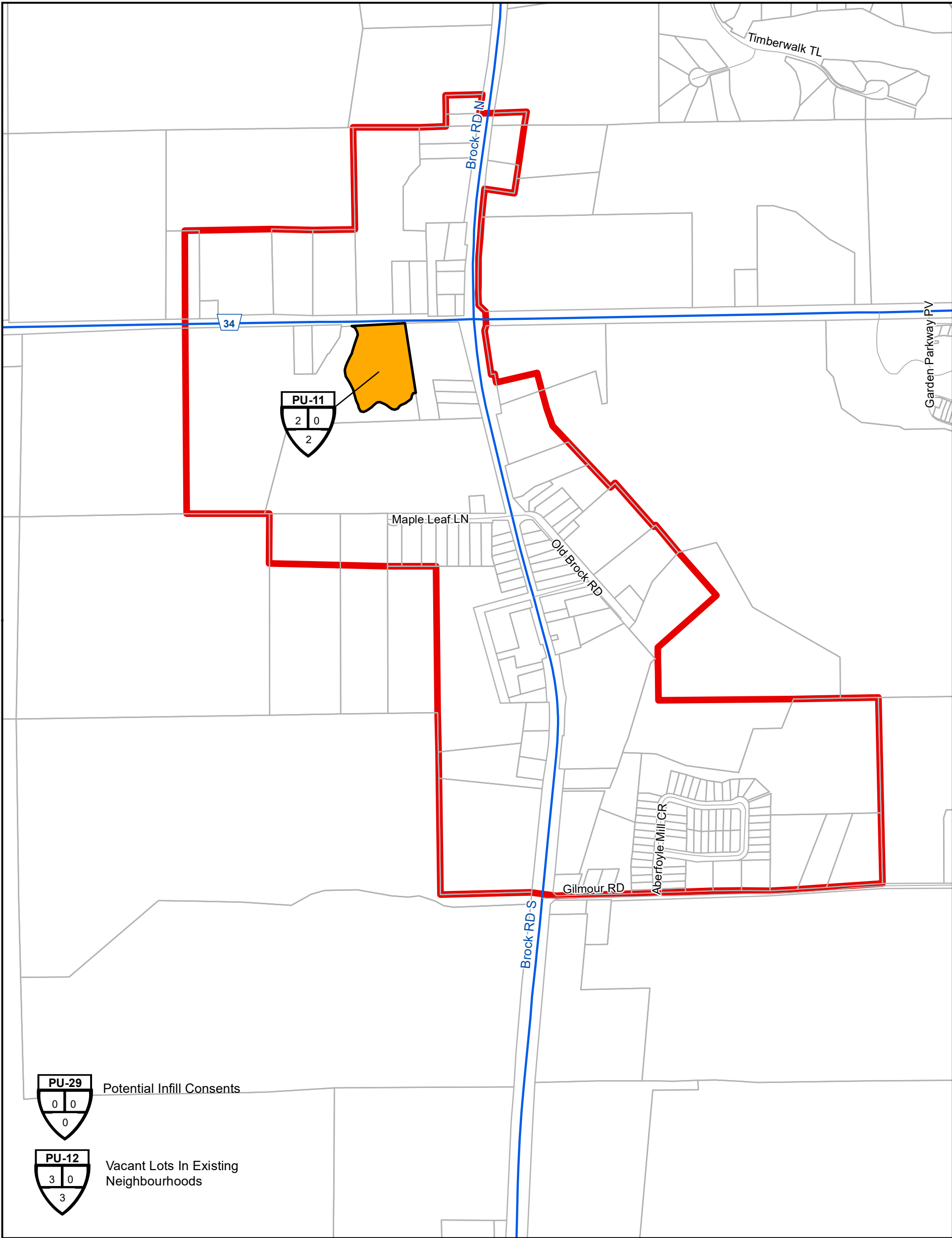
Puslinch Residential Supply Maps

As of July 1, 2019

PUSLINCH LAND BUDGET
LONG TERM RESIDENTIAL UNIT SUPPLY By Category (as of July 2019)

	Vacant & Potential Supply				
Area	Registered	Draft Approved or Provisional	Applications Under Review	Vacant Designated	TOTAL UNITS
URBAN CENTRES	16	0	0	33	49
Aberfoyle	3	0	0	2	5
Morrison	13	0	0	31	44
OUTSIDE URBAN CENTRES	229	0	0	153	382
Arkell	3	0	0	0	3
Countryside	116	0	0	153	269
Lifestyle Community	71	0	0	0	71
Rural Estate	39	0	0	0	39
MUNICIPAL TOTAL	245	0	0	186	431

- NOTES:
1. The figures contained in the table and maps are subject to change during the Municipal Comprehensive Review (MCR).
 2. The figures contained in the table do not include lands designated future development.



Residential Supply Category

- Vacant Designated
- Application Under Review
- Draft Approved Or Provisional
- Registered
- Built Out Since 2011
- Built Boundary

Map ID

MI-35

12113

134

Vacant or Potential Units as of July 1, 2019

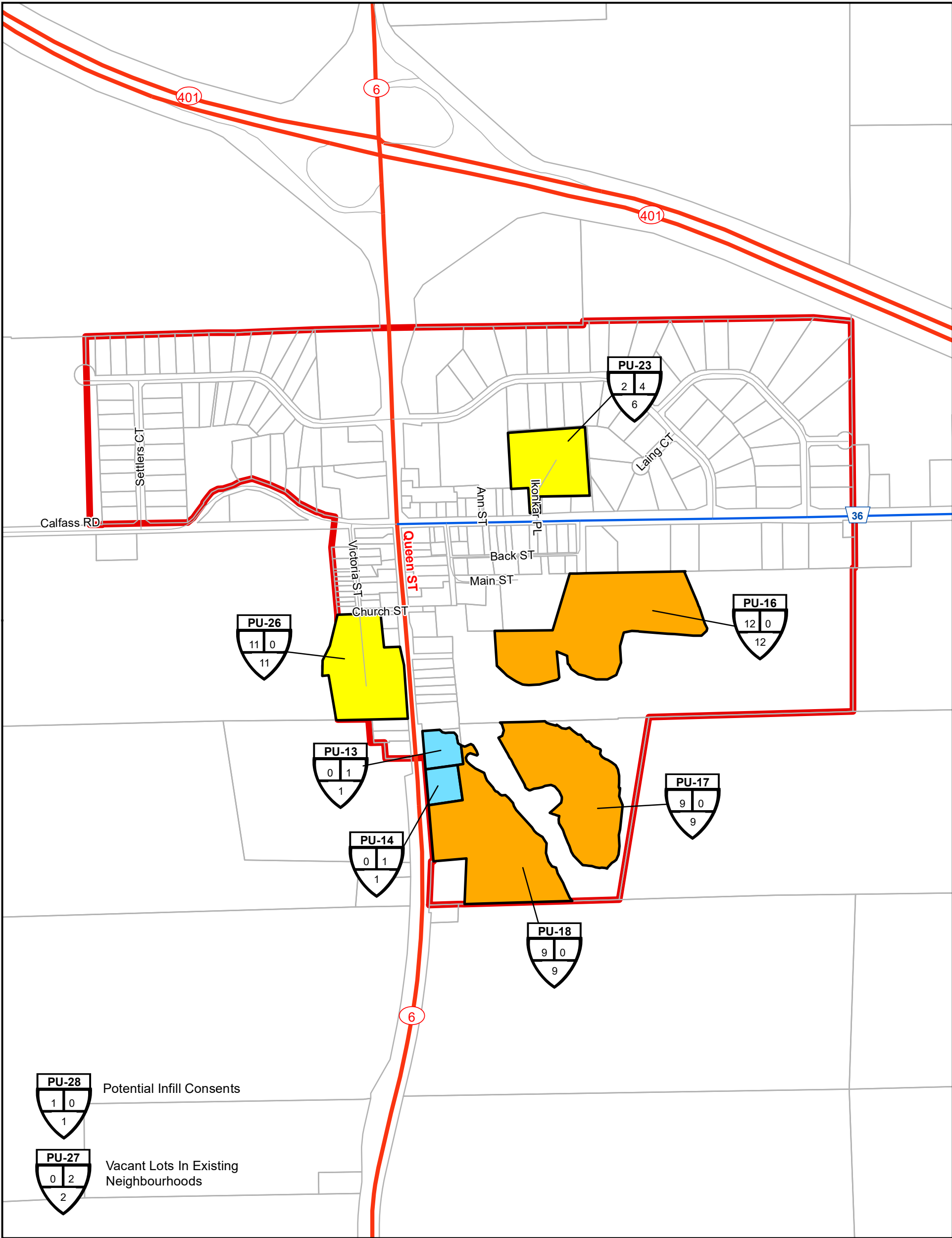
Building Permit Issued between July 1, 2011 and June 30, 2019

Total Supply as of July 1, 2011

Aberfoyle Residential Supply Inventory with Built Boundary

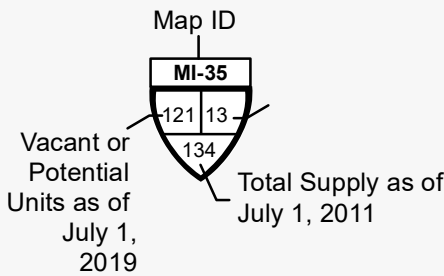
0100200400

Metres

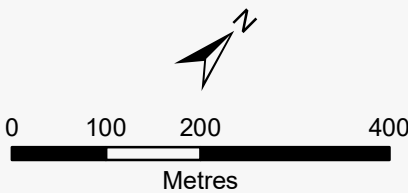


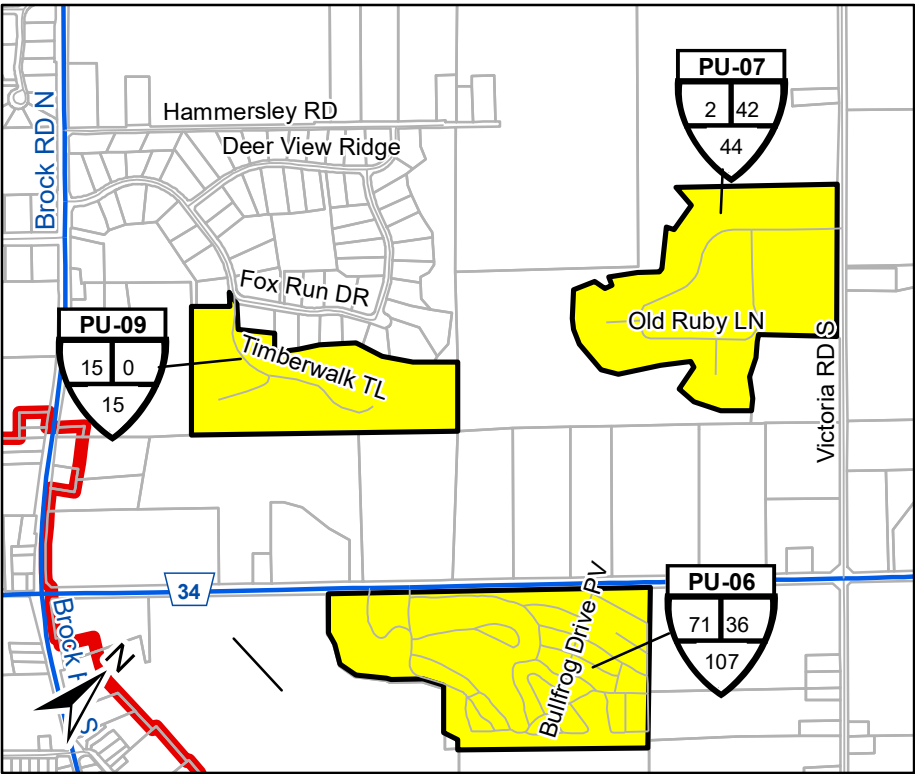
Residential Supply Category

- Vacant Designated
- Application Under Review
- Draft Approved Or Provisional
- Registered
- Built Out Since 2011
- Built Boundary

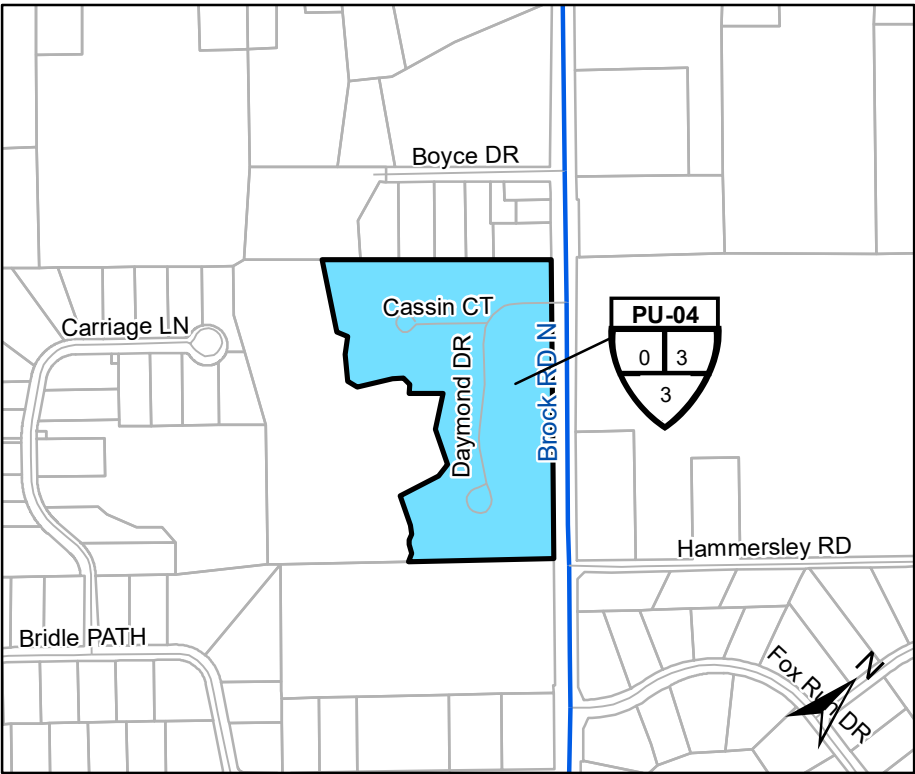


Morriston Residential Supply Inventory with Built Boundary

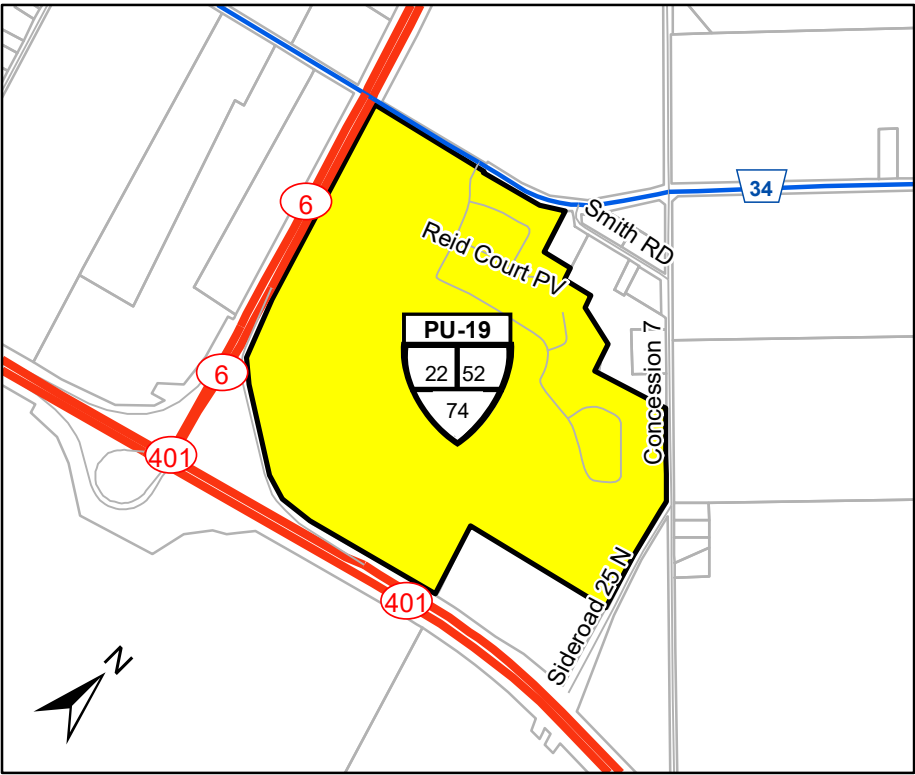




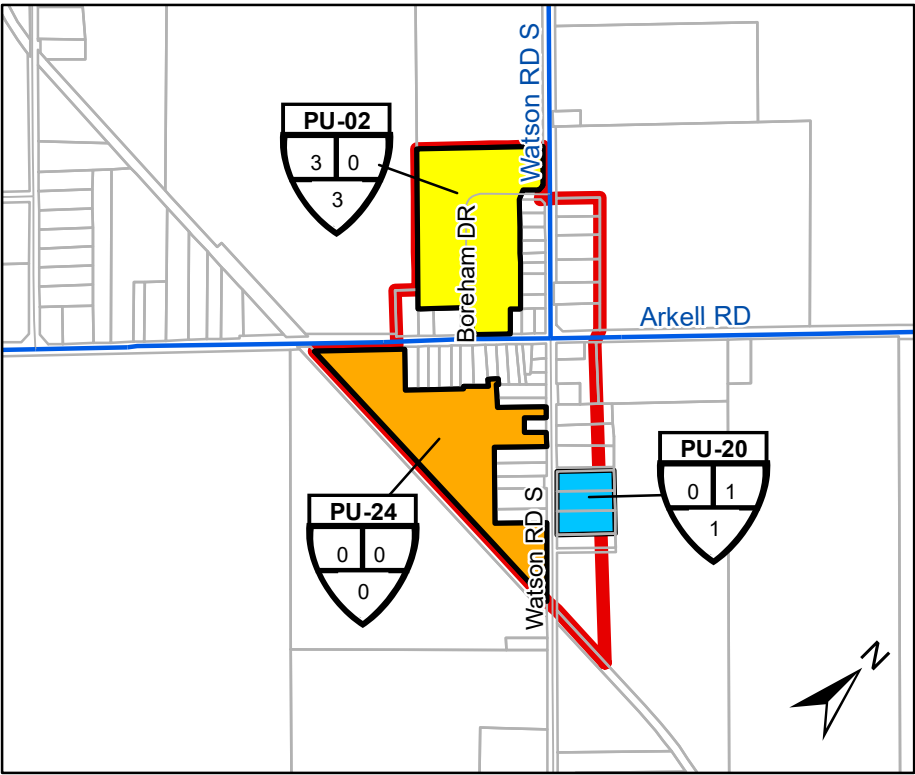
Audrey Meadows (PU-07), Mini Lakes (PU-06), Fox Run Phase 2(PU-09)



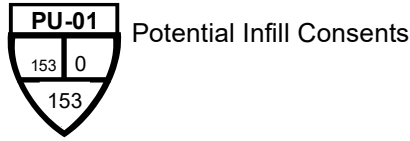
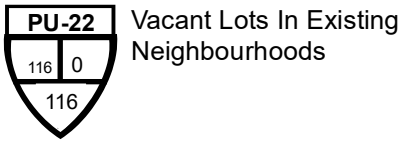
Aberfoyle Creek Phase 3



Heritage Lake

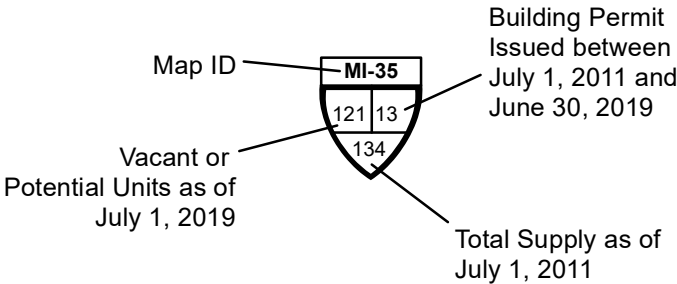


Arkell Estates (PU-02), Arkell - Guthrie (PU-24) and Kukovica Potential Severances (PU-20)



Township of Puslinch Rural Residential Supply Inventory

THIS IS NOT SURVEY DATA
Parcels - Teranet 2002, County of Wellington 2015
Roads - County of Wellington, 2015
Includes material © 2015 of the Queen's Printer for Ontario. All Rights Reserved.



Residential Supply Category

- Vacant Designated
- Application Under Review
- Draft Approved Or Provisional
- Registered
- Built Out Since 2011
- Built Boundary

Puslinch Employment Supply Maps

As of July 1, 2019

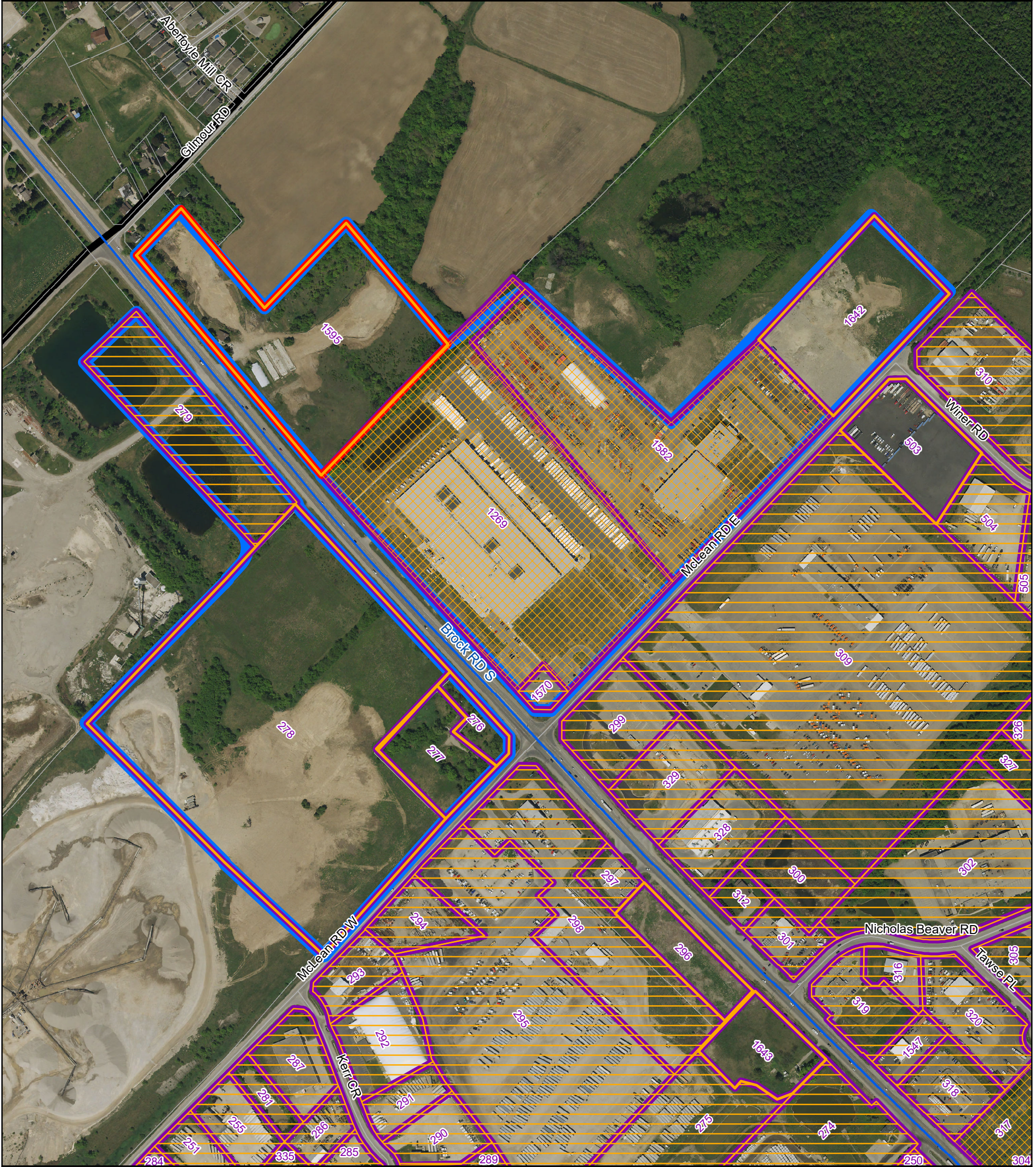
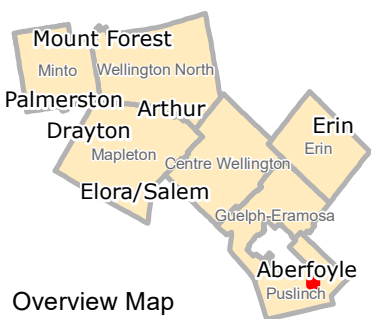
Employment Lands Summary
July 2019
All values are in acres

Puslinch

	Highway Commercial					Industrial					Rural Employment				
	Absorbed since 2011	Built	Vacant Designated	TOTAL DESIGNATED AREA	Vacant Developable Area	Absorbed since 2011	Built	Vacant Designated	TOTAL DESIGNATED AREA	Vacant Developable Area	Absorbed since 2011	Built	Vacant Designated	TOTAL DESIGNATED AREA	Vacant Developable Area
Puslinch	0.00	4.57	14.40	18.97	11.52	0.00	12.62	0.00	12.62	0.00	57.40	495.09	276.29	828.78	218.24
Aberfoyle	0.00	4.57	0.00	4.57	0.00	0.00	12.62	0.00	12.62	0.00	0.00	0.00	0.00	0.00	0.00
North Aberfoyle Employment Lands	0.00	4.57	0.00	4.57	0.00	0.00	12.62	0.00	12.62	0.00					
Outside Urban Centre	0.00	0.00	14.40	14.40	11.52						57.40	495.09	276.29	828.78	218.24
Employment Lands North of McLean Road	0.00	0.00	14.40	14.40	11.52						50.02	6.97	45.06	102.05	38.25
Kerr Industrial Park											0.78	235.58	45.30	281.66	37.30
Maltby Road at HWY 6												30.27	170.26	200.53	127.02
Nicholas Beaver Industrial Park											6.60	222.27	15.67	244.54	15.67

NOTES:
1. The figures contained in the table and maps are subject to change during the Municipal Comprehensive Review (MCR)
2. The figures contained in the table do not include lands designated future development.

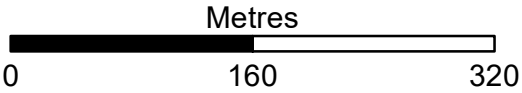
Employment Lands North of McLean Road



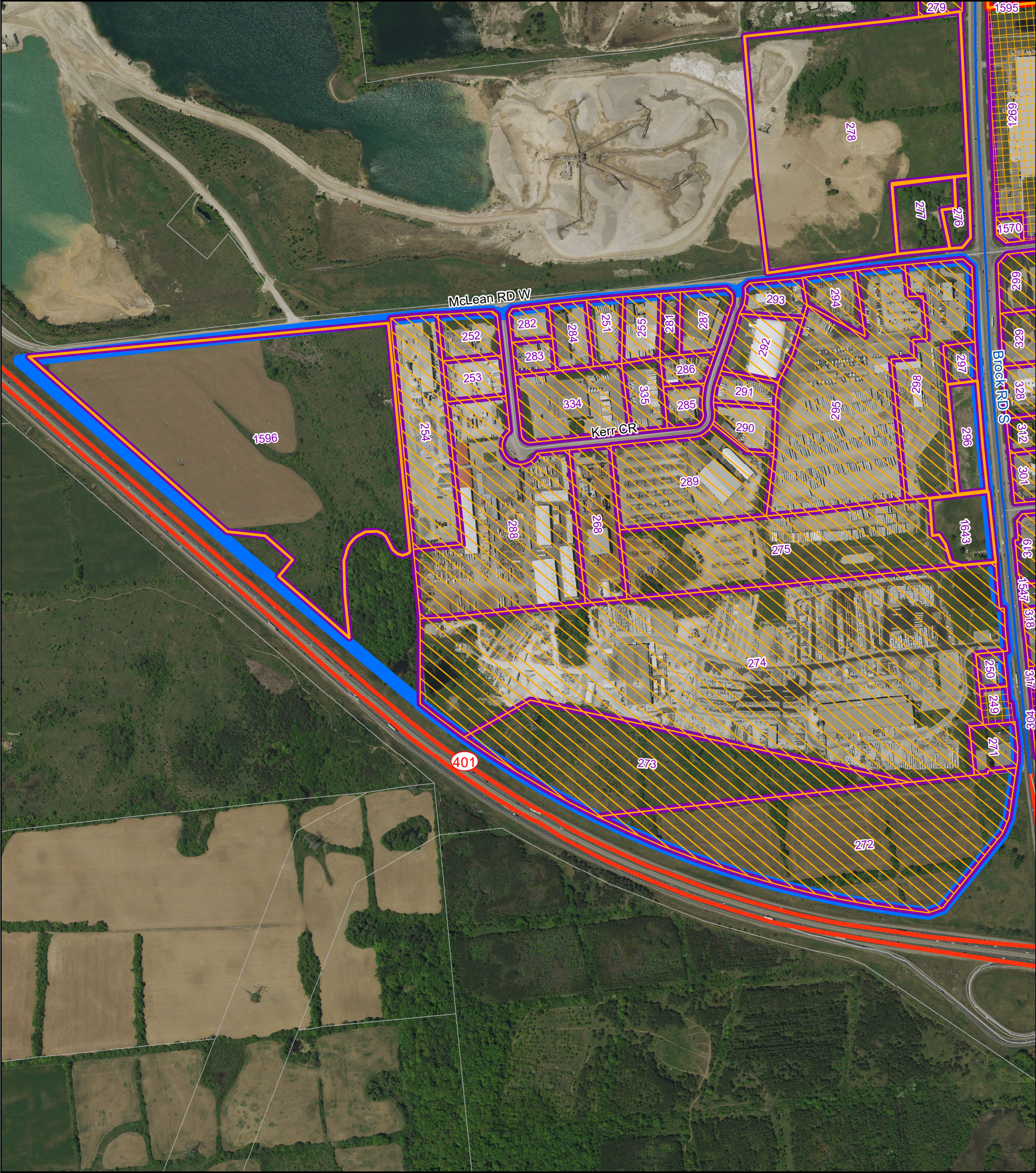
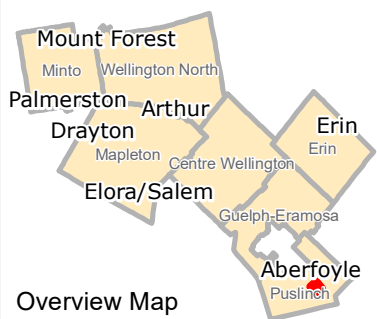
Legend

- 123 Identification Number
- Industrial
- Highway Commercial
- Vacant
- Absorbed since January 2011
- Built Prior to January 2011
- Employment Map Areas

Puslinch Rural Area



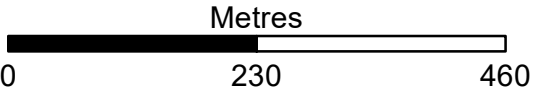
Kerr Industrial Park



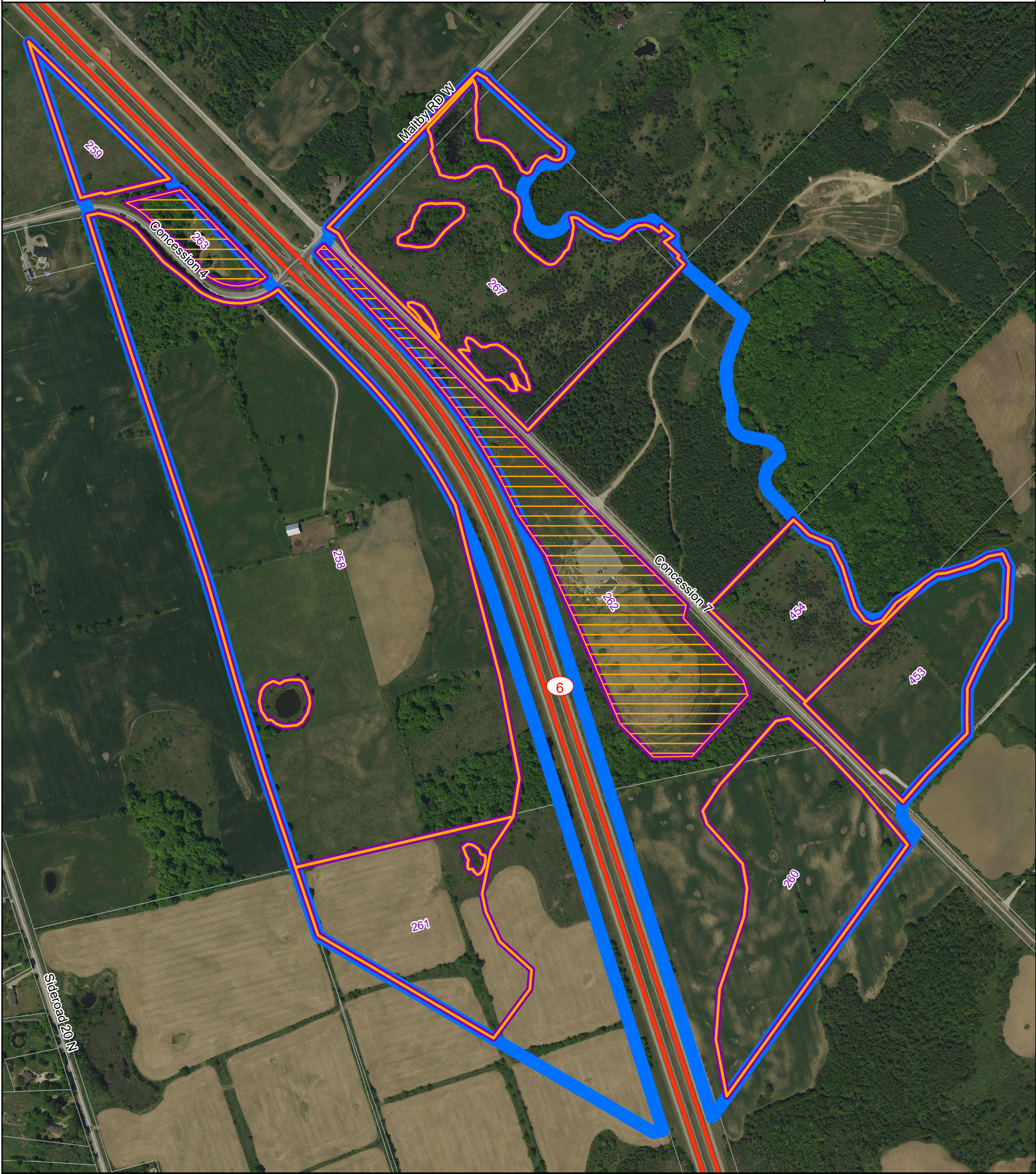
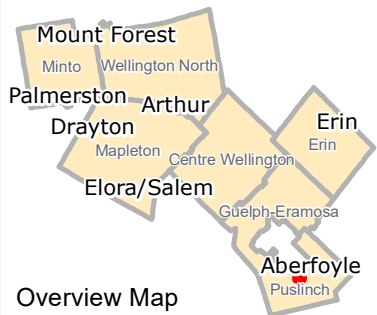
Legend

- 123 Identification Number
- Industrial
- Highway Commercial
- Vacant
- Absorbed since January 2011
- Built Prior to January 2011
- Employment Map Areas

Puslinch Rural Area



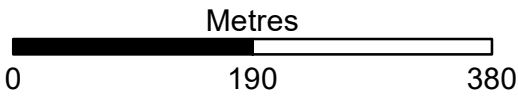
Maltby Road at Highway 6



Legend

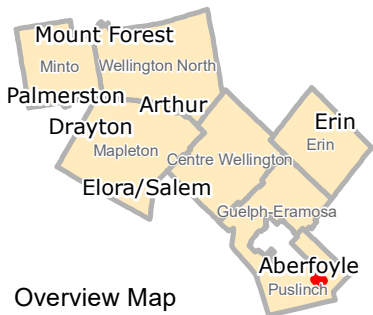
- 123 Identification Number
- Industrial
- Highway Commercial
- Vacant
- Absorbed since January 2011
- Built Prior to January 2011
- Employment Map Areas

Puslinch Rural Area



Includes material © 2019 of the Queen's Printer for Ontario. All Rights Reserved.
County of Wellington, 2019
This is not survey data.

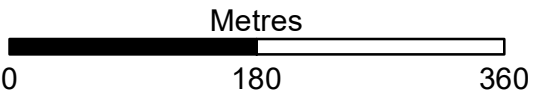
Nicholas Beaver Industrial Park



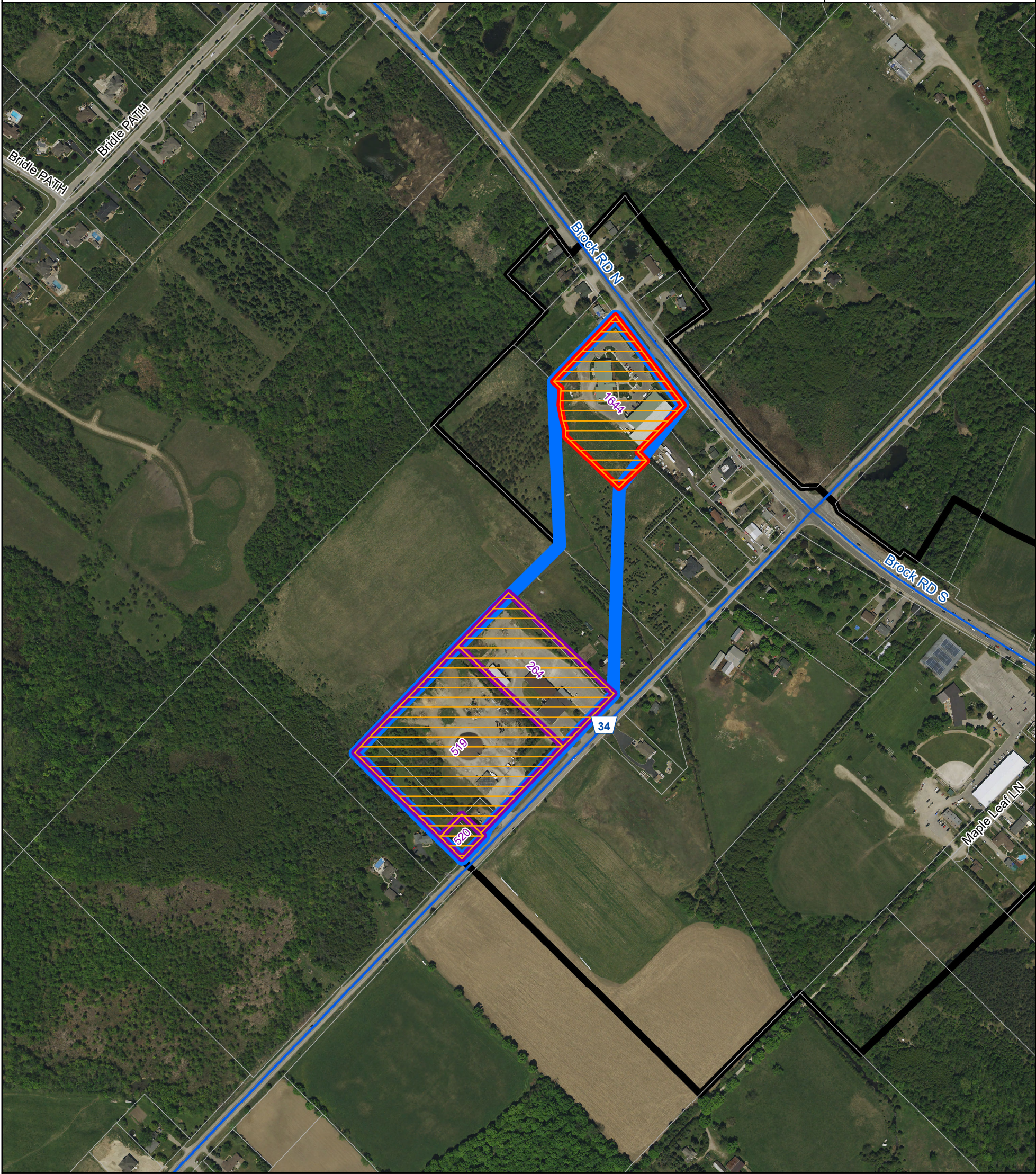
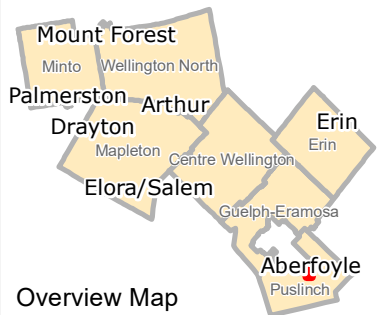
Legend

- 123 Identification Number
- Industrial
- Highway Commercial
- Vacant
- Absorbed since January 2011
- Built Prior to January 2011
- Employment Map Areas

Puslinch
Rural Area



North Aberfoyle Employment Lands



Legend

- 123 Identification Number
- Industrial
- Highway Commercial
- Vacant
- Absorbed since January 2011
- Built Prior to January 2011
- Employment Map Areas

Puslinch
Aberfoyle

