

A Message from our Chair



Steve O'Neill
Chair, Solid Waste Services Committee

A few weeks ago I was at the local curling rink, throwing rocks and talking current events with the other curlers. As I am the Chair of the Solid Waste Services Committee, the topic of the new minimum fee at the County's waste facilities came up (starting January 1). It was a good discussion, and I thought I would share with you some of what we talked about.

A minimum fee is a standard practice at most waste facilities. It is meant to

encourage residents to use curbside collection services.

We already pay our collection contractor to drive past every house in the County, so why drive to a waste facility and wait in a lineup to drop off your materials when you can set them out at the curb? Did you know you can place your yellow bag in a garbage can? This is a great way to keep the wildlife from disturbing your garbage bags. Just remember items need to be out by 7am on your collection day!

Also, rural residents no longer need to walk across the road to put out their waste. The collection vehicles travel both sides of every road, so you can set out your stuff at the end of your driveway or laneway. What could be more convenient than that?

Putting your garbage and recyclables

out at the curb will free up space in the bins at the sites. This will allow us to start separating other items that can be recycled instead of putting them into the garbage bins.

Things such as mattresses, shingles, and drywall are materials the County would really like to manage differently. Let's get them out of the garbage to conserve space in our one and only landfill, and conserve natural resources by recycling them. This makes better and more efficient use of our sites and meets the County's goal of converting our waste facilities into diversion centres.

If you see me out about town, please say hello and ask me any questions you may have about the County's waste management system. Or reach out to the SWS team, they are ready to help!

Steve O'Neill
Chair, Solid Waste Services Committee



Solid Waste News

A friendly newsletter from the County of Wellington Solid Waste Services Division

NEW

Waste Facility minimum fees starting January 2025

On September 26 Wellington County Council voted to implement a new \$10.00 minimum user fee at each of the County's six waste facilities, effective January 1, 2025.

Charging a minimum waste fee is a standard practice at waste facilities across Ontario, and is expected to extend the lifespan of landfills, including our own here in Wellington County.

By adopting this best practice, Solid Waste Services aims to expand the list of materials that can be diverted at waste facilities by freeing up space in bins

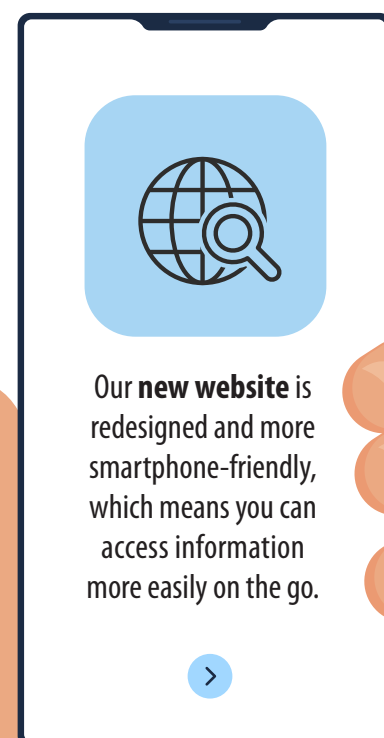
currently occupied by bagged garbage. Materials such as mattresses, asphalt shingles, and drywall will be able to be separated and recycled instead of landfilled.

The minimum fee will apply to all materials brought to County waste facilities, including waste contained in yellow County collection garbage bags. Materials designated by the Province under the Resource Recovery and Circular Economy Act (RRCEA) will be exempt from the minimum fee.

Connecting with Solid Waste Services

Let's keep in touch!

Solid Waste Services provides you with several ways to stay informed and ways to reach out to us.



Our **new website** is redesigned and more smartphone-friendly, which means you can access information more easily on the go.



Recycle Coach has so many features that residents can take advantage of including collection schedule reminders, reporting missed collections, and finding out **What Goes Where**.



Sign up for our **SWS E-Newsletter** to have service updates notifications sent right to your email inbox.



Social – follow us on **Facebook** and **X** for helpful information and service updates.



Email or Phone us!
wasteinfo@wellington.ca
519.837.2601

So, what are my options?



Let us come to you!
Use curbside collection.



Critter issues?
Place your user-pay bags in garbage cans curbside.



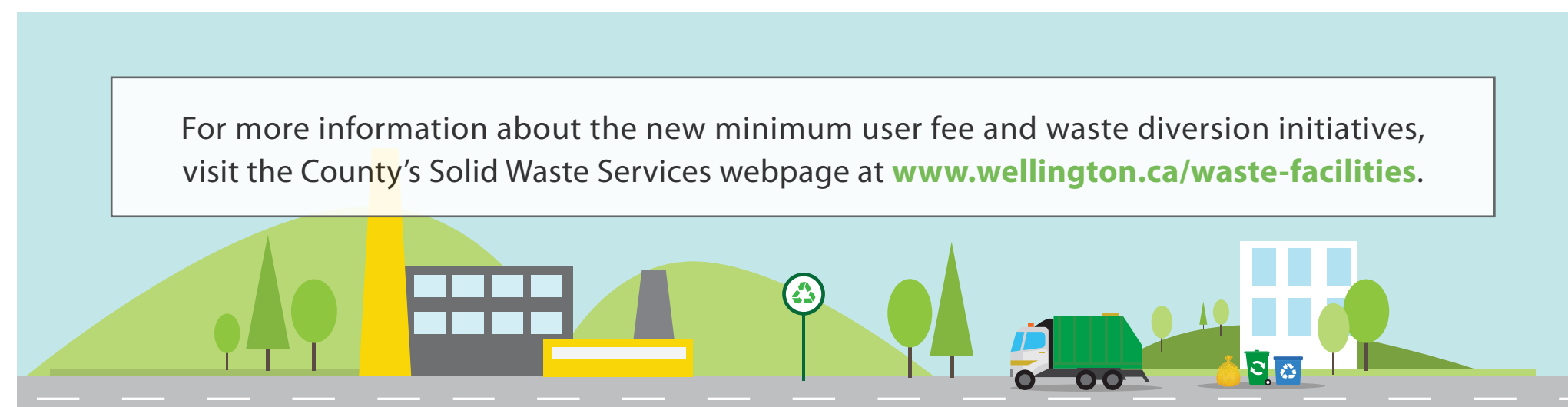
Recycle:
Divert more materials into recycling and green bins.

The following items are currently designated under the RRCEA and financially supported by producers:

- Household Hazardous Waste
- Tires
- Electronic waste

In addition to the above items, residential leaf and yard waste delivered to County waste facilities from April through November will also be exempt from the minimum fee.

For more information about the new minimum user fee and waste diversion initiatives, visit the County's Solid Waste Services webpage at www.wellington.ca/waste-facilities.





Tree-Cycling your Christmas Tree



Natural Christmas Tree Collection

Natural Christmas trees will be collected in urban areas only during the week of January 6. Please have trees out by 7:00 am on Monday. However, please note it may not be collected until later that week. We thank you for your patience. Natural Christmas trees will be accepted free of charge at all County waste facilities December 27 to January 31 during regular operating hours.

A number of service clubs and organizations will also be providing curbside collection of natural Christmas trees. These collections occur in various locations across the County.

Please visit wellington.ca/sws-dropoff for information on these programmes.

Waste Facility and Collection Holiday Changes

December and January

Closures

All waste facilities scheduled to be open on Tuesday, December 24, and Tuesday, December 31, will close at 2:00 pm.

All County of Wellington waste facilities will be closed on Wednesday, December 25, Thursday, December 26, and Wednesday, January 1.

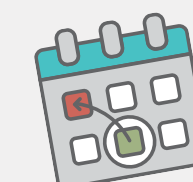
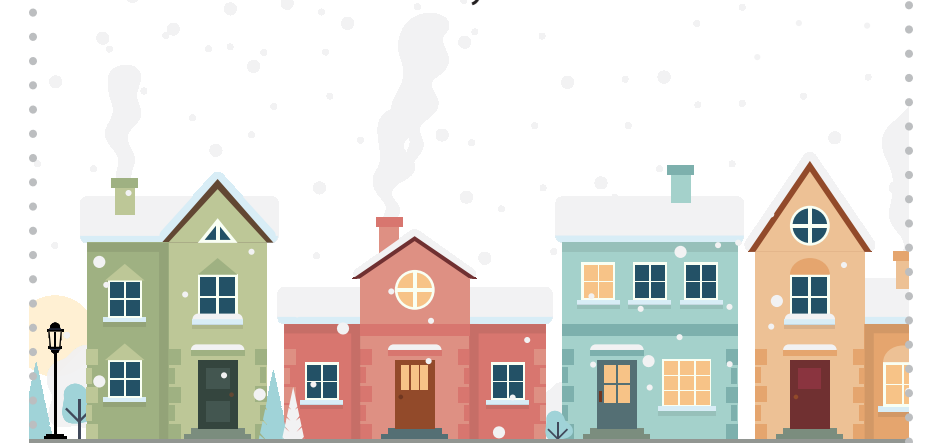
Curbside Collection

All curbside collection scheduled for Wednesday, December 25 will be postponed until Saturday, December 28.

Regular collection will take place on Thursday, December 26.

All curbside collection scheduled for Wednesday, January 1 will be postponed to Saturday, January 4.

No other collection days are affected.



Please note that **Christmas** and **Boxing Day** collection dates have been revised from the original calendar!

Christmas Material Disposal

Holidays can get messy. Sometimes materials can end up in places they don't belong and cause some significant problems in waste processing. Here is some helpful advice for cleaning things up properly.

Ribbons, bows, garland, gift bags, and string lights are all tangles that can tie up and damage sorting machinery, these items and others like them belong in the **Garbage**.

Bottles and cans can be emptied and recycled in your **Blue Box**. When possible, return alcohol containers for deposit and reuse at your local Beer Store, including boxed wine packaging!

Leftover leftovers, food scraps, and accepted organics are always best in your home composter or **Green Bin**. Putting these materials in your garbage costs more and can attract unwanted critters and creates methane gas and leachate in our landfill.

Wrapping paper, foil and cellophane all belong in the **Garbage**. Many materials get combined with wrapping paper to make them appear metallic, shiny, and glittery which can contaminate the recycling products.

With all sorts of new electronics coming and going please be sure that batteries are always disposed of as **Household Hazardous Waste**.



Blue Box Transition is Coming to Wellington County



As reported in the Summer 2024 newsletter, the responsibility for the blue box programme in Wellington County will be changing next year.

On July 1, 2025, producers of blue box materials will be responsible for collecting and processing residential recyclable materials in Wellington County. By January 1, 2026, they will be responsible for all

residential blue box programmes in the Province of Ontario. This was previously a responsibility of municipal governments.

While the County will no longer be managing the residential blue box programme, your collection day and the materials you can place out in your blue box will not be changing at this time.

However, the producers are not responsible for collecting the blue box materials for businesses. The County is currently considering options to continue to provide recycling services to businesses.

More information will be coming from SWS in the new year as plans are formalized with the producers and our community partners.

If you would like to learn more about the transition process and the producers' goals for the future, please visit circularmaterials.ca/ON.