



# Solid Waste News

A friendly newsletter from the County of Wellington Solid Waste Services Division

HEY

## Teachers!

Solid Waste Services makes available a number of free education programme visits throughout the school year.

We're happy to work with you to provide hands-on experiences that fit with your classroom curriculum plans, eco-clubs, assemblies, and more.

Please visit [www.wellington.ca/engagement](http://www.wellington.ca/engagement) to find out more.



### HIGHLIGHTS

## 2023 SWS Annual Report Highlights

SWS operations, services and programmes are continuously evaluated to identify and implement sustainability enhancements, efficiencies, and improvements wherever possible. Each year, SWS staff provides a summary report with an overview of some of the key activities, achievements, and statistics in SWS. The full report can be found on our website at [www.wellington.ca/sws](http://www.wellington.ca/sws). Here are a few highlights from 2023.

Key Customer Service Statistics	2022	2023	% change
number of calls and emails	4,592	5,311	15.7%
number of customers at waste facilities	230,617	219,853	-4.7%
number of garbage curbside stops	471,683	389,100	-6.8%
number of garbage bags picked up at curbside	661,846	674,076	1.8%
number of blue box curbside stops	950,870	1,046,788	10.1%
number of green bin curbside stops	522,386	521,928	-0.1%

SWS Programme Tonnages	2022	2023	% change
total tonnes disposed	18,431.96	17,200.14	-6.7%
blue box recyclables	6,174.16	6,174.63	0.0%
materials diverted in other programmes	10,473.21	10,675.13	1.9%
<b>Total tonnes managed by SWS</b>	<b>35,079.33</b>	<b>34,049.89</b>	<b>-2.9%</b>

### Environmental Stewardship Highlights

- Partnered with the Mount Forest Green Team who volunteered to plant 170 trees including Red Pine, Norway Spruce, and White Spruce around the periphery of the closed Martin Street Landfill in Mount Forest. Trees were sourced from the County's Green Legacy Programme.
- Initiated a new partnership with a local plastics recycler to divert bulky plastic items from landfill.

### Quick Fact

"Food items" was the most searched term in Recycle Coach in 2023, followed closely by plastic take-out containers and Styrofoam packaging inserts.

### Customer Service Highlights

- Partnered with the Township of Centre Wellington and BIA's to implement weekly collection of user pay garbage in downtown areas of Fergus and Elora.

### Financial Highlights

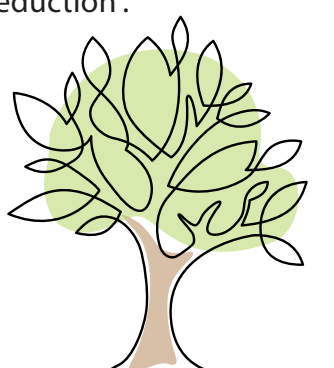
- The Riverstown compactor was due for replacement in 2023. Rather than trading the used compactor in, SWS chose to keep it as a backup piece of equipment to avoid future heavy equipment rental costs due to maintenance needs and ensure there would be no interruption to the compaction of waste at the landfill.
- Reduced equipment maintenance costs by moving fleet maintenance of SWS on-road vehicles to the County's Roads Division.



Mount Forest Green Team planting trees at a closed landfill site

### Other Achievements Highlights

- The County's Mobile Household Hazardous Waste (HHW) Depot won another prestigious award, this one from the North American Hazardous Materials Management Association (NAHMMA). The Depot was nominated by a resident of the County and won the "Programme Innovation" award which recognizes "unique and effective innovations" "including best recycling/reuse strategies, best documented educational strategies resulting in positive behavior change, and/or best documented hazard reduction".



## A Message from our Chair



Steve O'Neill  
Chair, Solid Waste Services Committee

As Chair of the Solid Waste Services (SWS) Committee, I am pleased that our County SWS staff have put together an informative summer newsletter to keep the residents of Wellington County up to date on happenings in solid waste news.

I encourage residents to download the County's Recycle Coach app. It will remind you, the evening before, what curbside services are happening at your address the next day. Staff also use the app to send messages if delays are occurring in that week's pickup schedule for your area, as well as where our Household Hazardous Waste Mobile Depot is located that month.

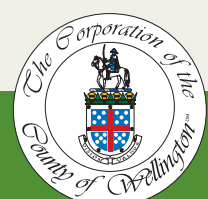
Users can also use the lookup tool to find out where items go in the waste stream. Diversion services and practicing the 3R's are important to help extend the life of our Riverstown landfill site.

Solid Waste Services staff are happy to attend and give presentations about our solid waste services to schools and groups. See the info ad in the newsletter.

There is lots of good information in this newsletter, especially the highlights from Solid Waste's 2023 Annual Report.

I'd like to express my thanks to our County residents who diverted over 50% of their waste material from entering our landfill, through our many diversion services including blue box recycling, green bin organics, and leaf and yard waste collections.

**Keep up the good work!**



SEASONAL

## People need liquids, your blue box does not.

During hot summer days it's important to keep hydrated. Bottled beverages make it easy to take drinks on the go with you. But when containers that have liquid left in them find their way into the recycling stream, problems arise. Liquids in bottles cause issues with sorting and processing. Containers that have food and drink residue left in them cause odours and attract unwanted wildlife. Emptying out and rinsing items goes a long way in helping us recycle more and recycle better.



COLLECTION

# Leaf and Yard Waste Collection

**Curbside collection** of leaf and yard waste is provided in **urban** areas only from April through November. Materials must be placed out on Monday of your collection week, however collection in your area may occur any time during the week. Monday set-out provides our collection crews flexibility to collect materials in the most efficient manner based on volume and equipment availability. Please note that collection may continue through Saturday, if required.

### Remaining 2024 Leaf and Yard Waste Curbside Collection Dates

WEEK A	WEEK B
Mapleton, Centre Wellington (West of Hwy 6), Erin, Guelph/Eramosa	Minto, Centre Wellington (East of Hwy 6), Wellington North, Puslinch
Monday, September 23	Monday, September 16
Monday, October 7 Monday, October 21	Monday, October 14 Monday, October 28
Monday, November 4 Monday, November 18	Monday, November 11 Monday, November 25



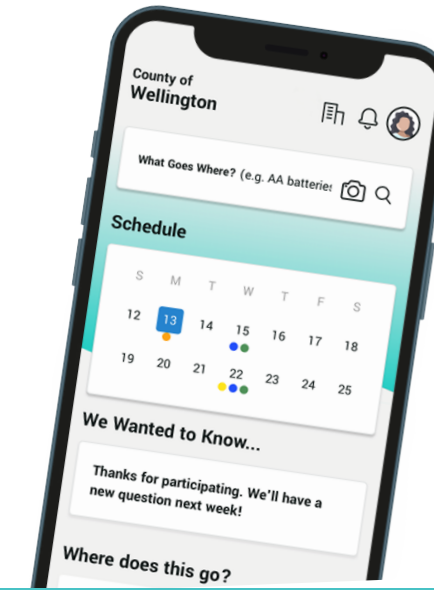
Leaf and yard waste is also accepted at **all County waste facilities** from April through November. There is no charge for residential customers. Regular fees continue to apply to wood, brush, branches, and commercial loads.



For more information visit [www.wellington.ca/yardwaste](http://www.wellington.ca/yardwaste)

TECH

## Recycle Coach What Goes Where?



We make hundreds of decisions every day. What should I wear? What should I make for supper tonight? Where do I put this aluminum pie plate? That last one is much easier to decide now, the answer is right at your fingertips in the **Recycle Coach app**. Just start typing "aluminum" and it will provide a list of items made from aluminum to choose from. Select the one you are looking for and find out where it belongs.

The app has thousands of items in its database with information on where it belongs in the County's waste management programme. For instance, through this past June and July the most searched item in the What Goes Where tool was "Furniture Items". Hopefully, some of those items made their way to one of our Reuse Centres or were donated to be used again!

The **Recycle Coach waste app** is available on the County's website, or you can download it to your device from **Google Play** or the **App Store**.



SCAN ME

## National Public Works Week

MAY 19 - 25

Each spring the County Engineering Department, comprised of Solid Waste Services and Roads Divisions, participates in **National Public Works Week**. This year we showcased some of the many services provided that we believe improve Quality of Life for our residents. Before the week officially started, SWS was out to talk to people at the Elora Farmers Market. Throughout the week there were composting workshops offered at libraries, elementary school education programming, truck visits to daycares, living snow fence planting, and an Adopt-a-Road clean up.



Wellington County employees are proud of the essential work they do in service of County residents and our community.

# Blue Box Transition

In 2021, the Ministry of Environment, Conservation and Parks (MECP) released a new Blue Box regulation which requires the producers of printed paper and packaging to pay 100% of the costs to recycle their materials. This is known as full extended producer responsibility (EPR). Prior to the transition process, producers funded 50% of Ontario's blue box programme costs operated by municipalities and First Nations communities.

The transition process is being led by Circular Materials (CM), a national not-for-profit organization that is committed to building an efficient and effective recycling system in Ontario. When the transition process is complete in December 2025, producers will be responsible to operate and finance blue box programmes across the province, including collecting recyclables from all households.

Wellington County's recycling programme will transition on July 1, 2025. From this date going forward, the residential recycling programme in Wellington County will be managed by Circular Materials (CM). While the goal is to standardize recycling across the province, during the transition period (ending December 31, 2025), CM has assured us there will be no change to the materials you currently recycle or your recycling collection schedule.

**More information will be coming from SWS and CM in the new year as plans are formalized.**

If you'd like to learn more about the transition process and goals for the future, please visit [circularmaterials.ca/ON](http://circularmaterials.ca/ON).

