

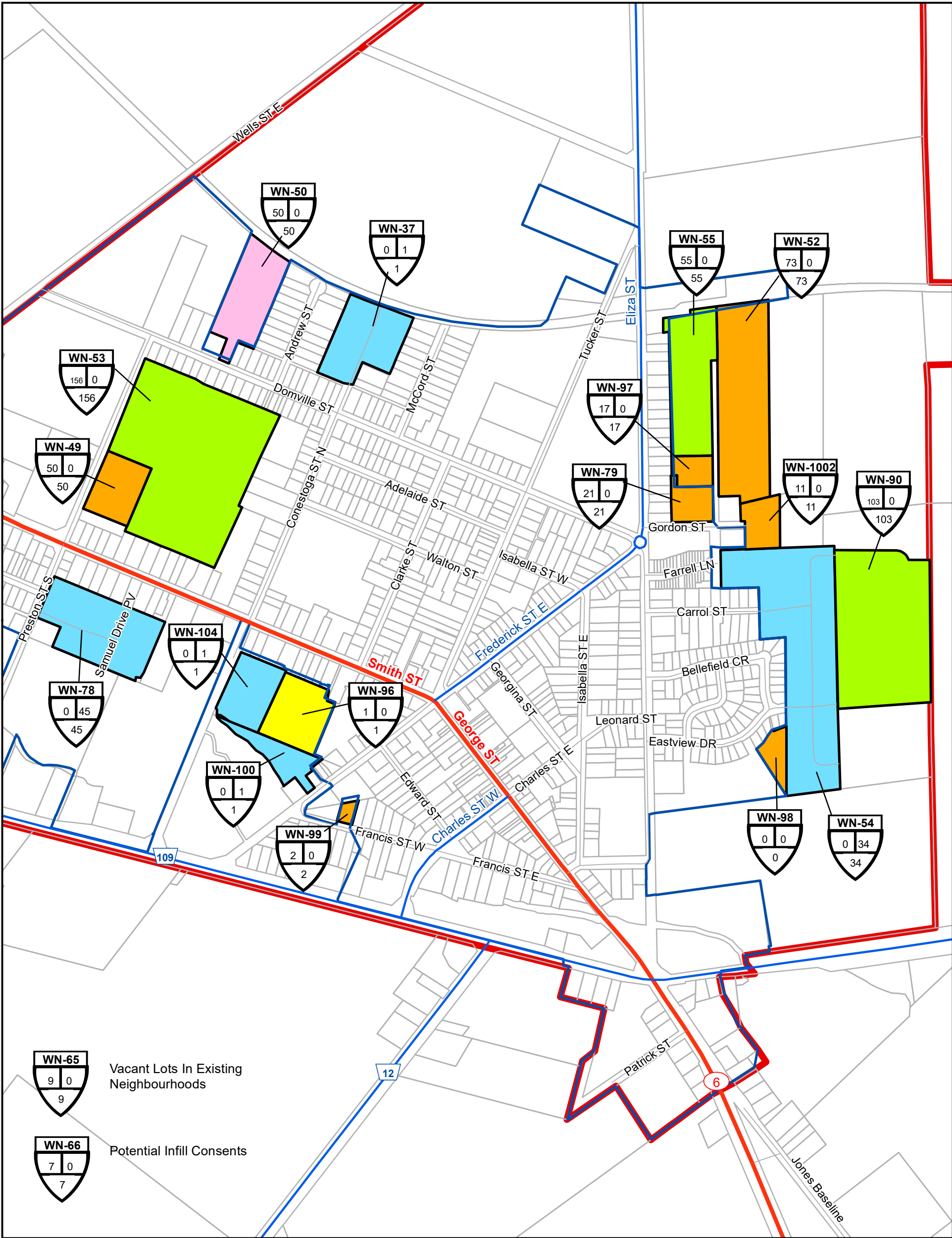
Wellington North Residential Supply Maps

As of July 1, 2019

WELLINGTON NORTH LAND BUDGET
LONG TERM RESIDENTIAL UNIT SUPPLY By Category (as of July 2019)

Area	Vacant & Potential Supply				TOTAL UNITS
	Registered	Draft Approved or Provisional	Applications Under Review	Vacant Designated	
URBAN CENTRES	231	850	50	694	1825
Arthur	10	314	50	181	555
Mount Forest	221	536	0	513	1270
OUTSIDE URBAN CENTRES	80	59	0	28	167
Damascus	2	0	0	18	20
Kenilworth	1	19	0	0	20
Lifestyle Community	0	40	0	0	40
Riverstown	0	0	0	10	10
Countryside	73	0	0	0	73
Rural Estate	4	0	0	0	4
MUNICIPAL TOTAL	311	909	50	722	1992

- NOTES:
1. The figures contained in the table and maps are subject to change during the Municipal Comprehensive Review (MCR)
 2. The figures contained in the table do not include lands designated future development.



Residential Supply Category

- Vacant Designated
- Application Under Review
- Draft Approved Or Provisional
- Registered
- Built Out Since 2011
- Built Boundary

Map ID

MI-35

121 13

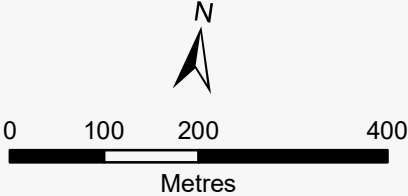
134

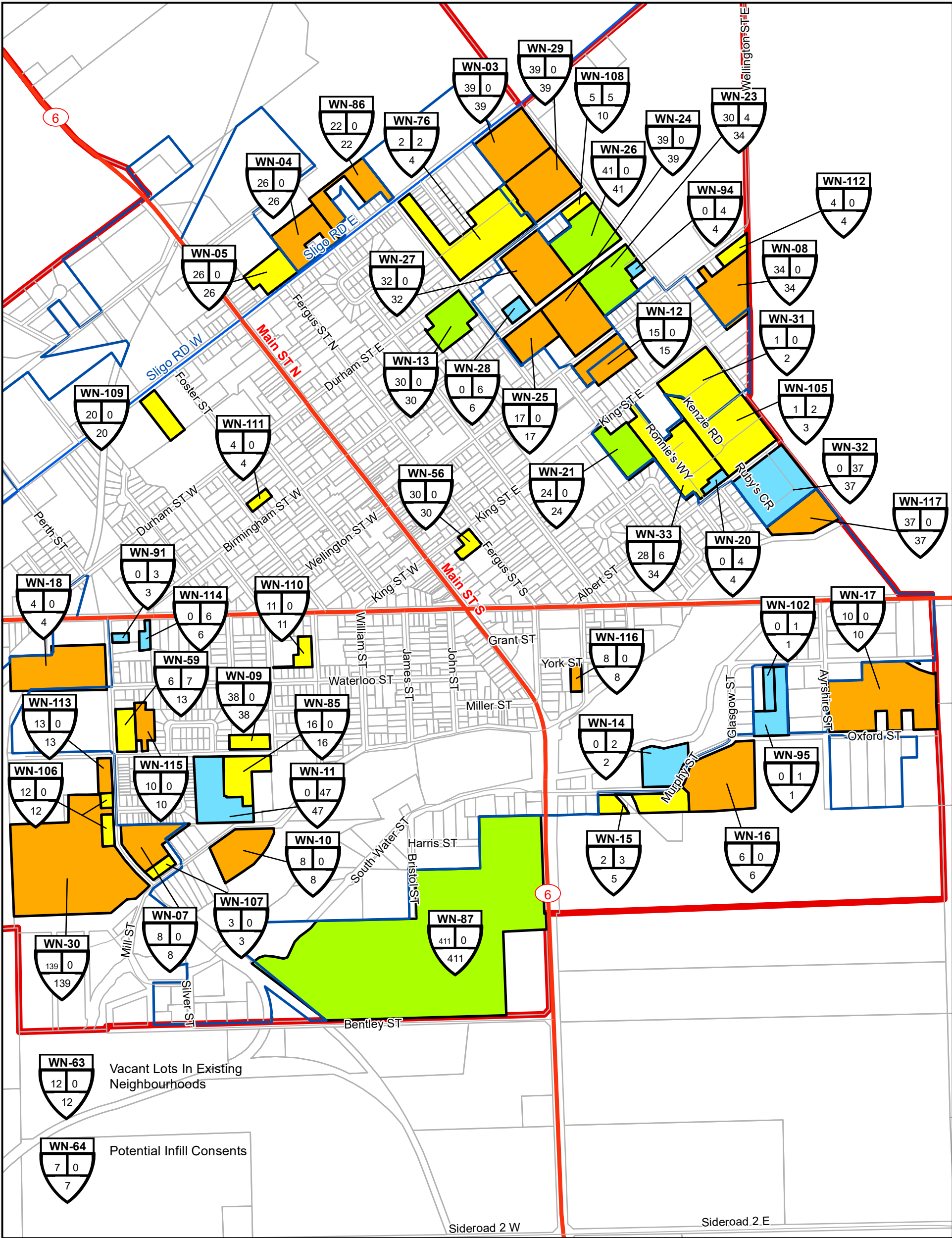
Vacant or Potential Units as of July 1, 2019

Building Permit Issued between July 1, 2011 and June 30, 2019

Total Supply as of July 1, 2011

Arthur Residential Supply Inventory with Built Boundary



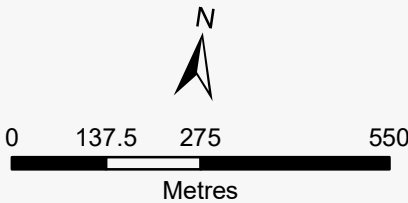


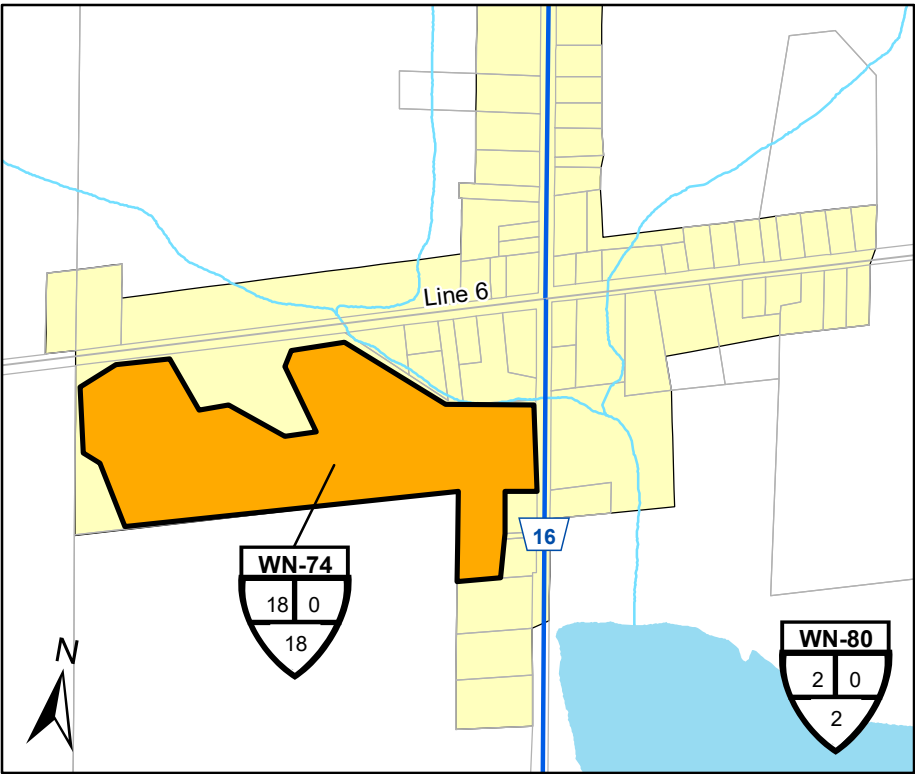
Residential Supply Category

- Vacant Designated
- Application Under Review
- Draft Approved Or Provisional
- Registered
- Built Out Since 2011
- Built Boundary

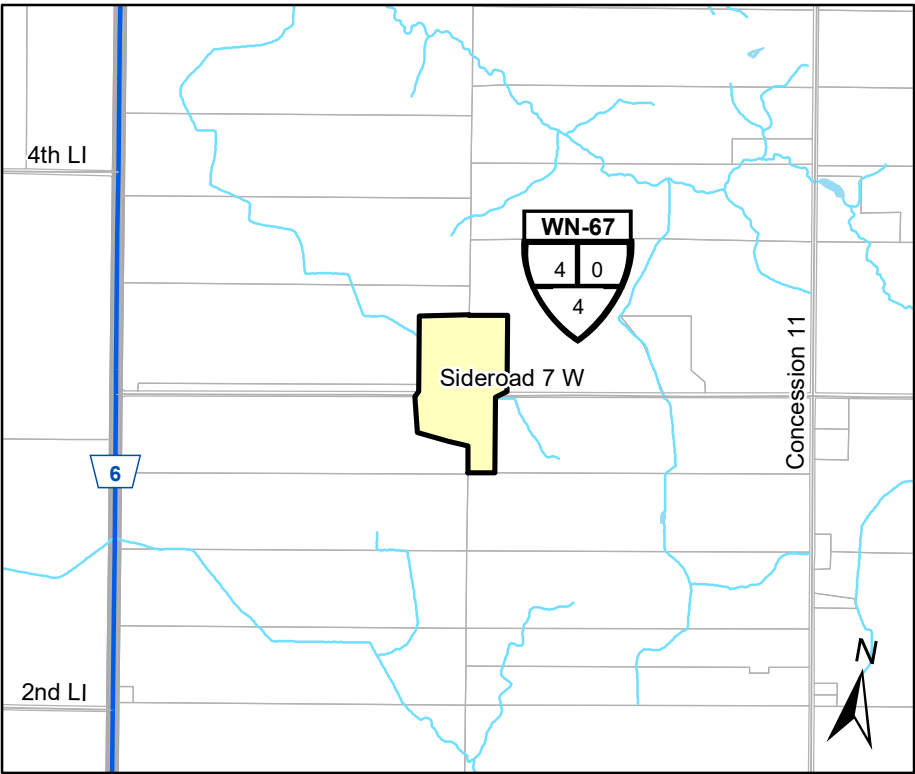
Map ID
MI-35
Building Permit
Issued between
July 1, 2011 and
June 30, 2016
Total Supply as of
July 1, 2011
Vacant or
Potential
Units as of
July 1,
2016

Mount Forest Residential Supply Inventory with Built Boundary

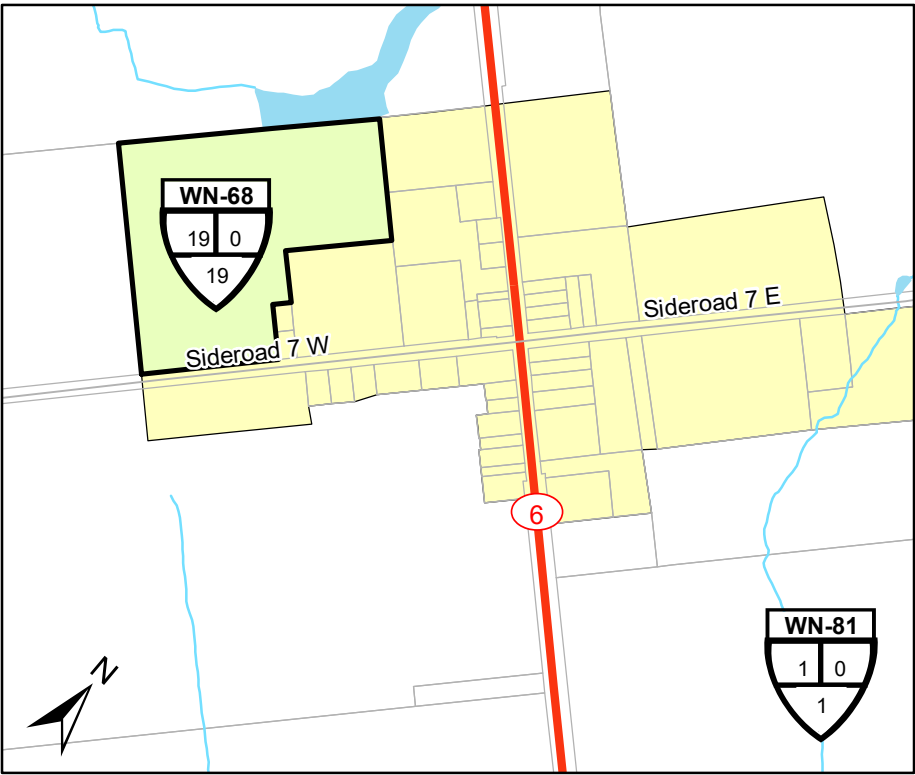




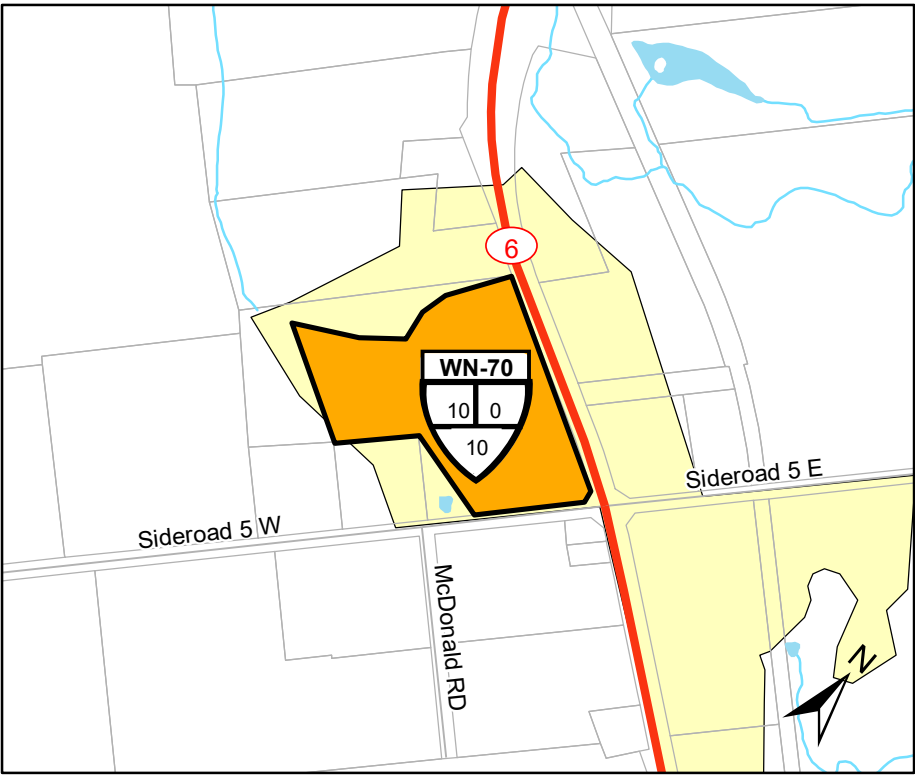
Damascus - Giles (WN-74) and Damascus Infilling (WN-80)



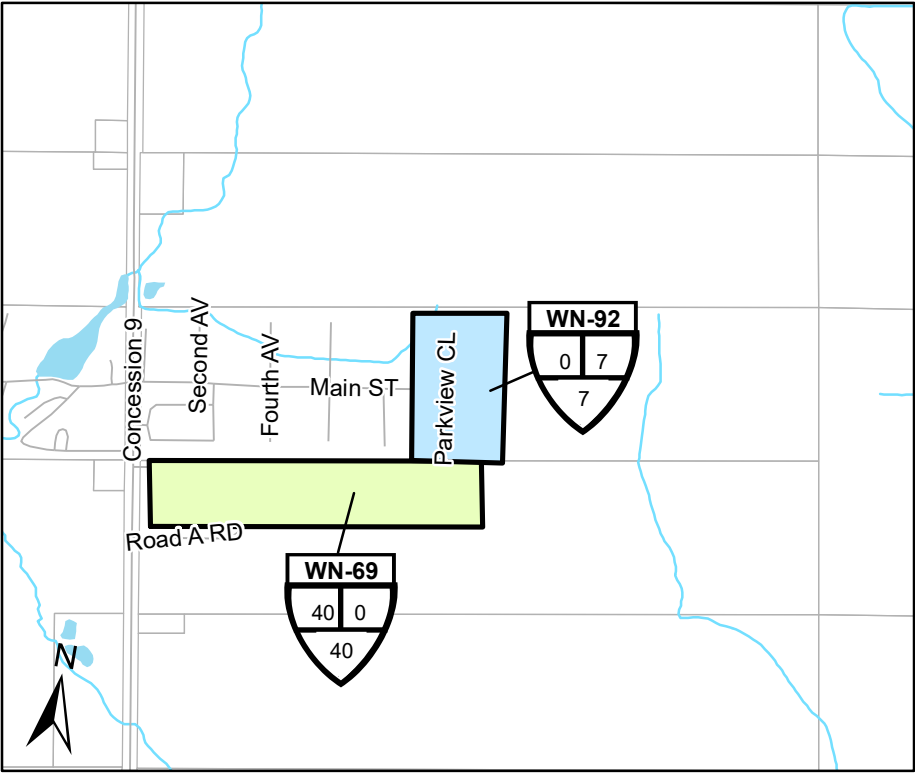
Rural Cluster on SR7



Glad-Pat (WN-68), Kenilworth Vacant Lots (WN-81)



Riverstown

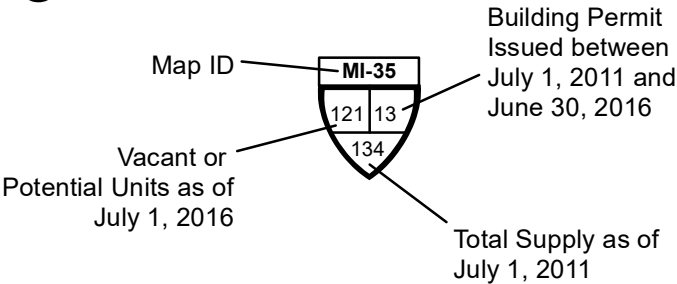


Conestoga Estates (WN-92) and Wellington Acres (WN-69)



Township of Wellington North Rural Residential Supply Inventory

THIS IS NOT SURVEY DATA
Parcels - Teranet 2002, County of Wellington 2015
Roads - County of Wellington, 2015
Includes material © 2015 of the Queen's Printer for Ontario. All Rights Reserved.



Building Permit
Issued between
July 1, 2011 and
June 30, 2016

- Residential Supply**
- Vacant Designated
 - Application under review
 - Draft Approved or Provisional
 - Registered
 - Built Out Since July 2011

Wellington North Employment Supply Maps

As of July 1, 2019

Employment Lands Summary
July 2019

Wellington North

All values are in acres

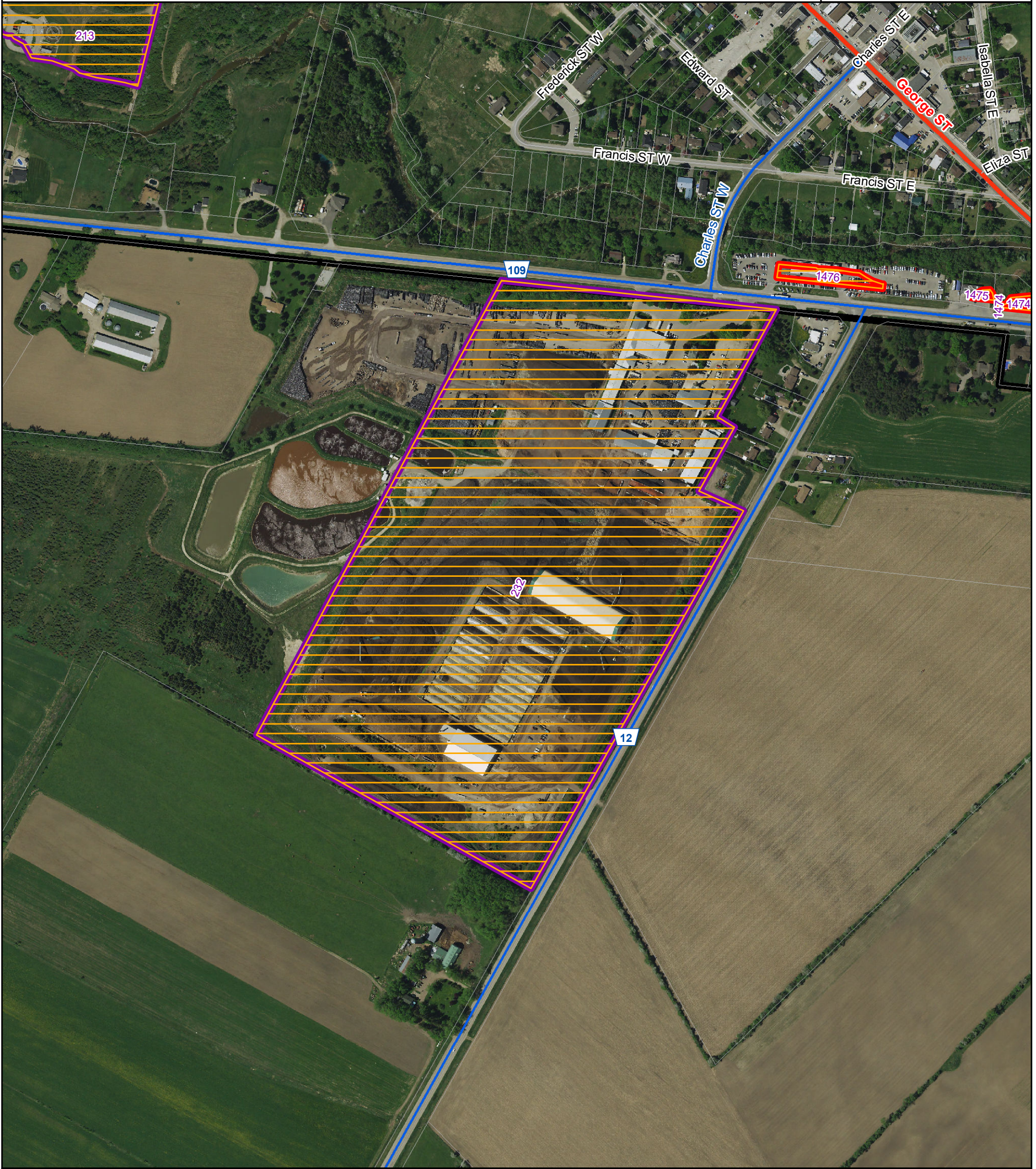
	Highway Commercial					Industrial					Rural Industrial				
	Absorbed since 2011	Built	Vacant Designated	TOTAL DESIGNATED AREA	Vacant Developable Area	Absorbed since 2011	Built	Vacant Designated	TOTAL DESIGNATED AREA	Vacant Developable Area	Absorbed since 2011	Built	Vacant Designated	TOTAL DESIGNATED AREA	Vacant Developable Area
Wellington North	3.55	77.45	22.51	103.51	22.51	12.88	256.10	335.05	604.03	271.35	0.00	182.97	68.58	251.55	55.71
Arthur	1.83	33.36	0.65	35.84	0.65	0.00	136.31	80.59	216.90	64.94	0.00	0.00	0.00	0.00	0.00
Highway Commercial Lands in Arthur	1.83	33.36	0.65	35.84	0.65										
Industrial Lands in Arthur							136.31	80.59	216.90	64.94					
Mount Forest	1.72	44.09	21.86	67.67	21.86	12.88	119.79	254.46	387.13	206.41					
Main Street South Area			7.92	7.92	7.92										
Northeast Mount Forest Employment Lands		15.51	6.09	21.60	6.09		20.70	238.03	258.73	191.40					
Northwest Mount Forest Employment Lands	1.72	28.58	7.85	38.15	7.85	12.88	99.09	16.43	128.40	15.01					
Outside Urban Centre											0.00	182.97	68.58	251.55	55.71
All Treat Lands												67.81		67.81	
Copernicus Lands												8.25		8.25	
Riverstown Industrial Park												76.73	22.86	99.59	19.13
Wellington Road 109 Rural Employment Lands												30.18	45.72	75.90	36.58

NOTES:

1. The figures contained in the table and maps are subject to change during the Municipal Comprehensive Review (MCR).

2. The figures contained in the table do not include lands designated future development.

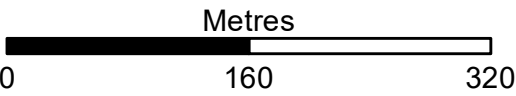
All Treat Lands



Legend

- 123 Identification Number
- Industrial Land
- Highway Commercial Land
- Vacant
- Absorbed since January 2011
- Built Prior to January 2011

Wellington North Rural Area



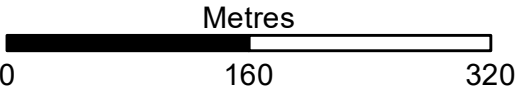
Copernicus Lands



Legend

- 123** Identification Number
- Industrial Land
- Highway Commercial Land
- Vacant
- Absorbed since January 2011
- Built Prior to January 2011

Wellington North Rural Area



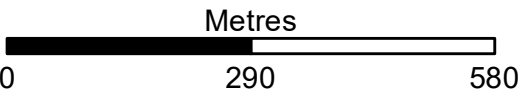
Employment Lands in Arthur (North)



Legend

- 123 Identification Number
- Industrial Land
- Highway Commercial Land
- Vacant
- Absorbed since January 2011
- Built Prior to January 2011

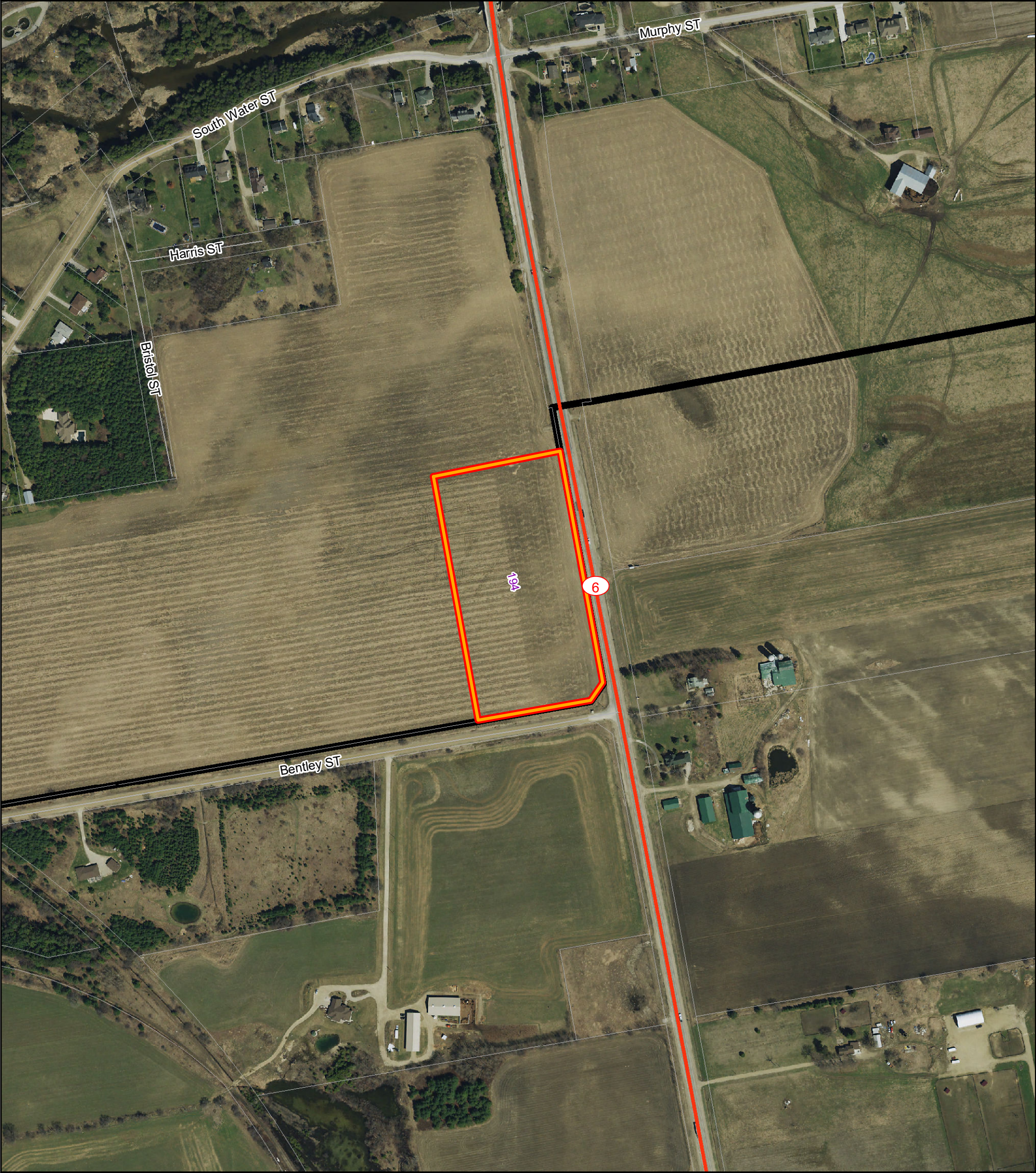
Wellington North Arthur



Overview Map



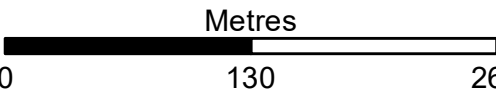
Main Street South Area



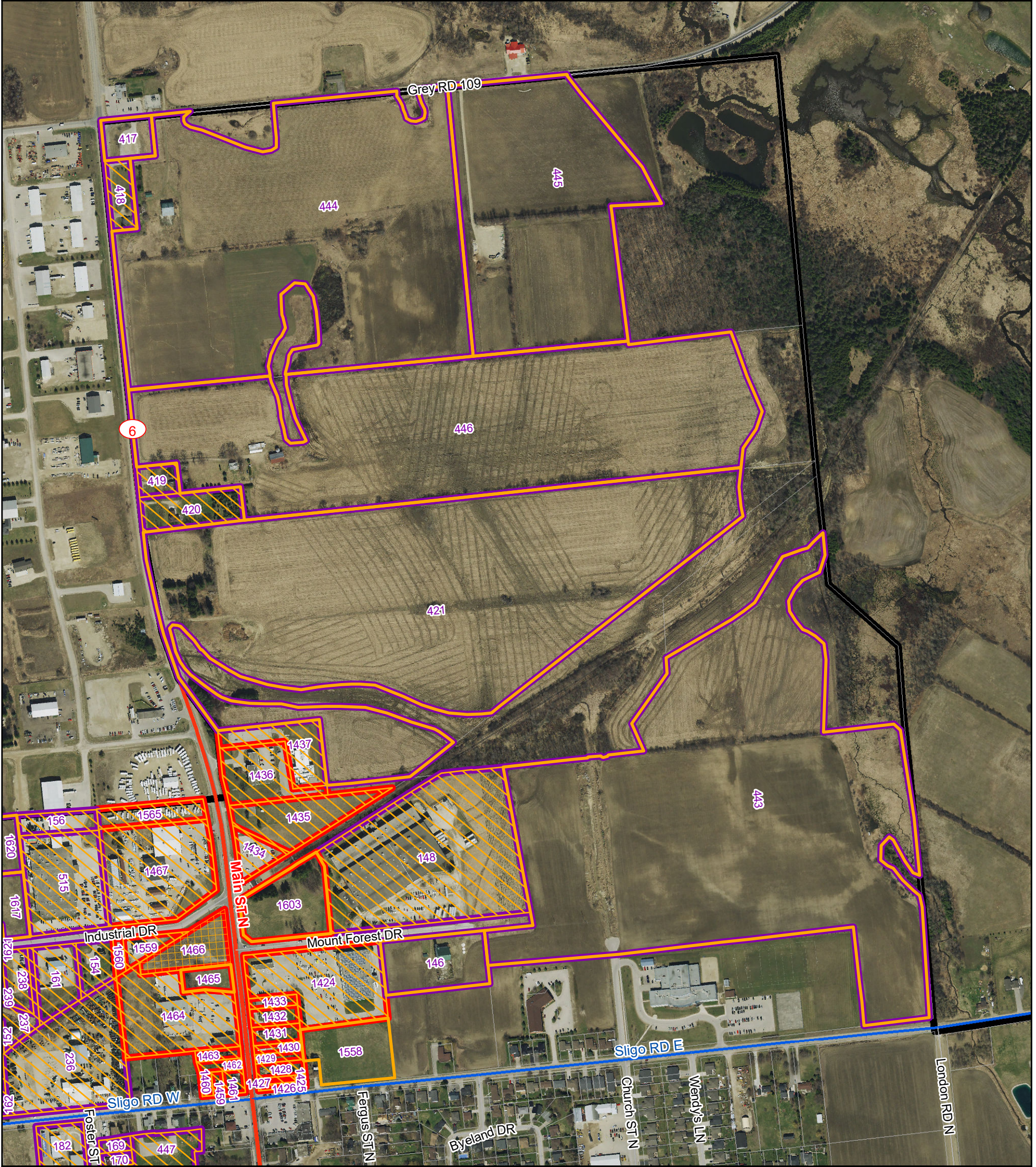
Legend

- 123 Identification Number
- Industrial Land
- Highway Commercial Land
- Vacant
- Absorbed since January 2011
- Built Prior to January 2011

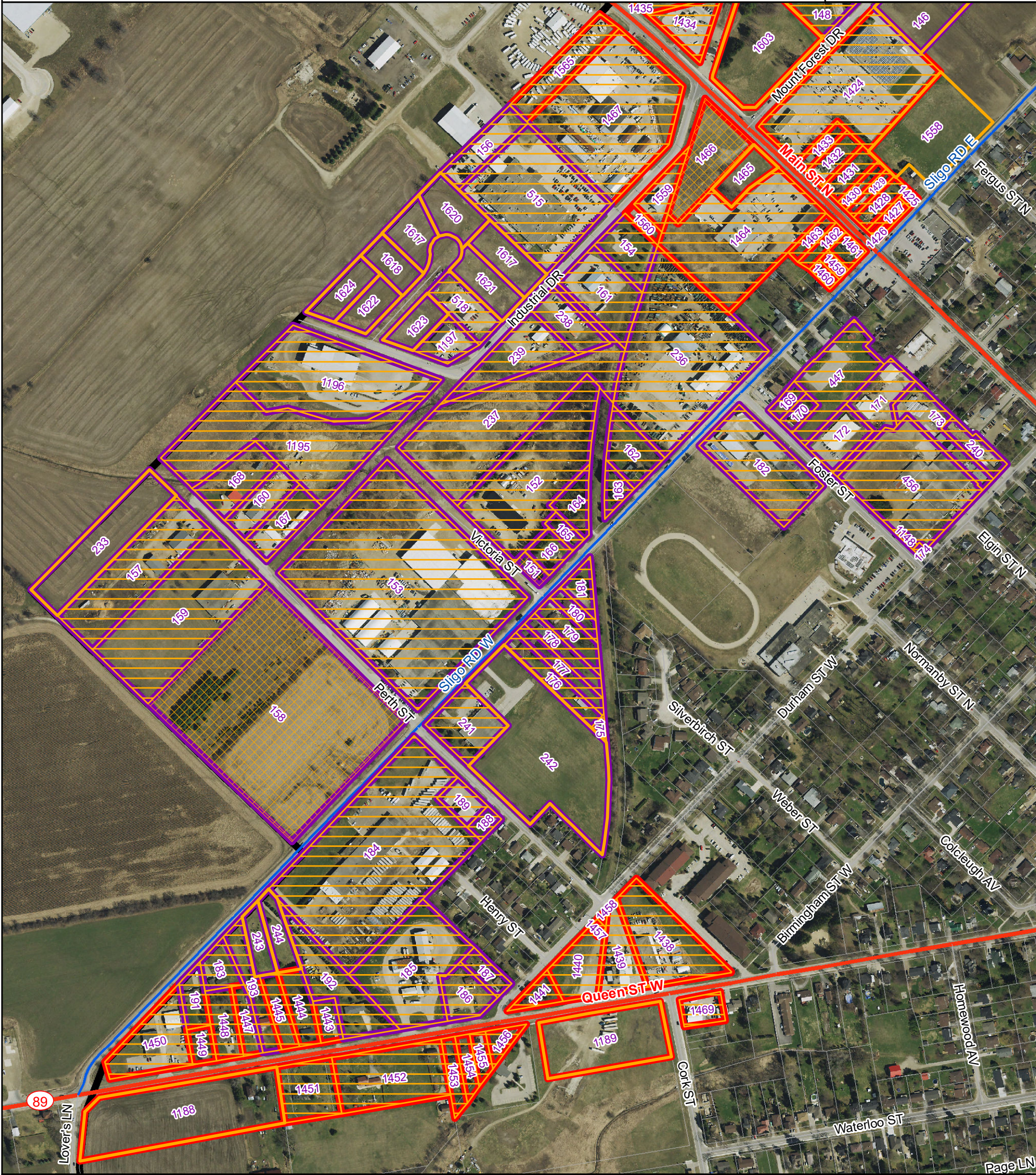
Wellington North Mount Forest



Northeast Mount Forest Employment Lands



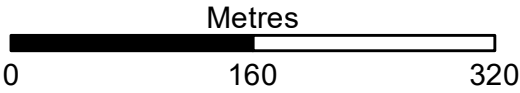
Northwest Mount Forest Employment Lands



Legend

- 123 Identification Number
- Industrial Land
- Highway Commercial Land
- Vacant
- Absorbed since January 2011
- Built Prior to January 2011

Wellington North Mount Forest



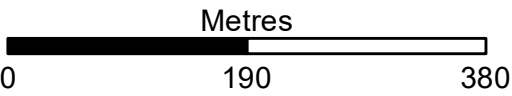
Riverstown Industrial Park



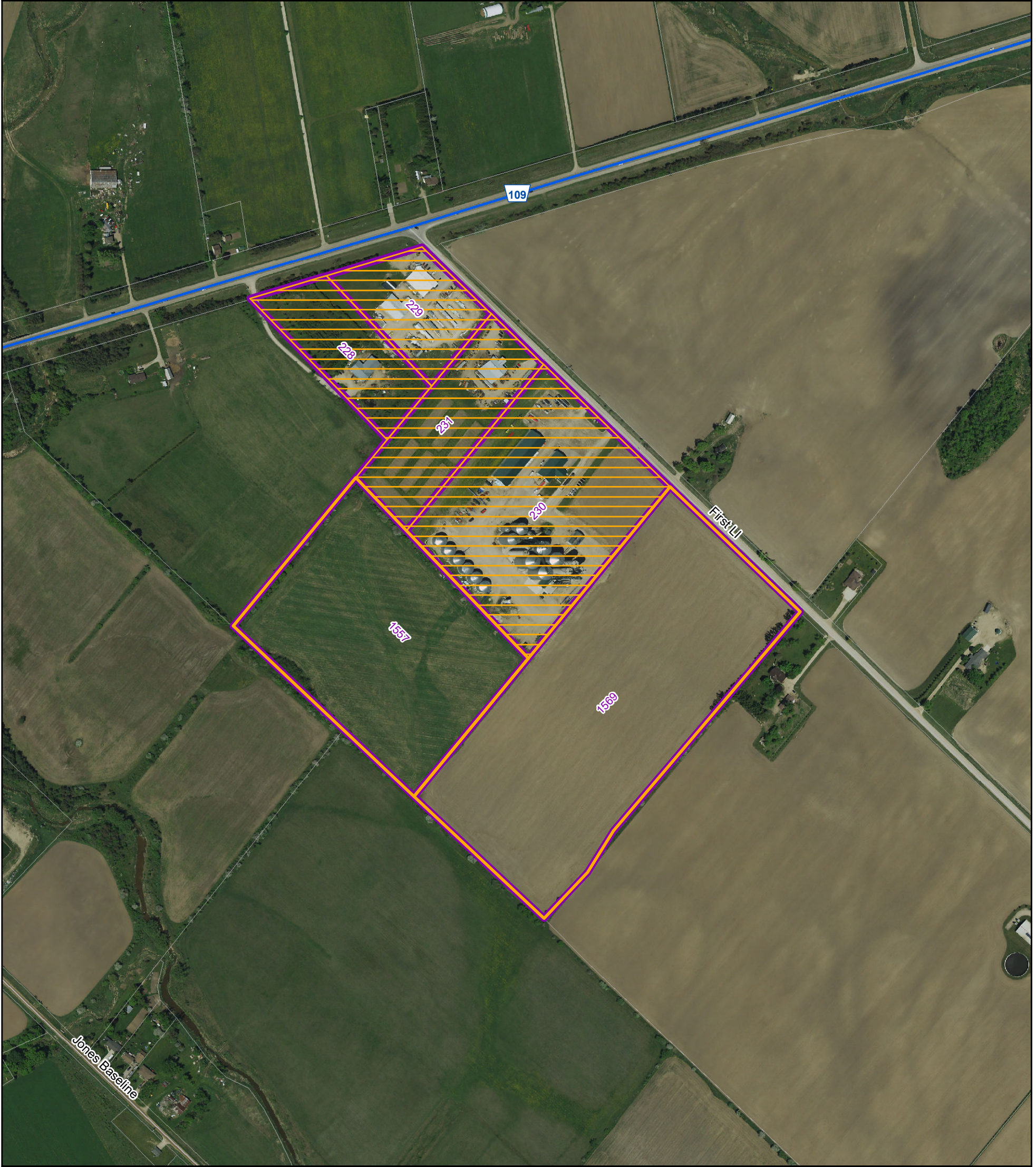
Legend

- 123 Identification Number
- Industrial Land
- Highway Commercial Land
- Vacant
- Absorbed since January 2011
- Built Prior to January 2011

Wellington North Riverstown



Wellington Road 109 Rural Employment Lands



Legend

- 123 Identification Number
- Industrial Land
- Highway Commercial Land
- Vacant
- Absorbed since January 2011
- Built Prior to January 2011

Wellington North Rural Area

